



SANKO MEXICO
ENGINEERING PLASTICS

¡Bienvenidos! · Welcome! · ようこそ！

Group Information



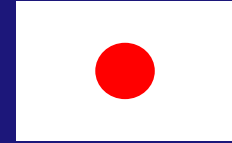
Sanko Kasei Co.

Is a Japanese company that operates in the *plastic and rubber product manufacturing industry*.



The company was founded in 1965 and is based in *Itabashi-Ku, Tokyo, Japan.*

Sanko México - Engineering Plastics, 2021.



Sanko Kasei Co.

Has established currently 12 manufacturing plants, with 3 overseas plants located in *China and Mexico.*



General Information



Establishment
March, 16, 2000



Capital
\$5,700,000 US



Building
5,713 m2



Operation Start
February 2001



IMMEX
No. 2000-537



IATF
Certified



PROSEC

Manpower

210
employees

6
days

3
shift days

8
hours



Manufacturing Plant

Servo Controlled Robots, Grinders, Drayers, Conveyors

50 Ton	11 Machines
75 Ton	6 Machines
80 Ton	3 Machines
100 Ton	29 Machines
130 Ton	3 Machines
180 Ton	11 Machines
220 Ton	9 Machines
350 Ton	7 Machines

79
machines





**Closed Loop Water Cooling System
with RO. (Reverse Osmosis) Keeps 25°C**

Air Conditioned Facility
Keeps 28° to 30°C



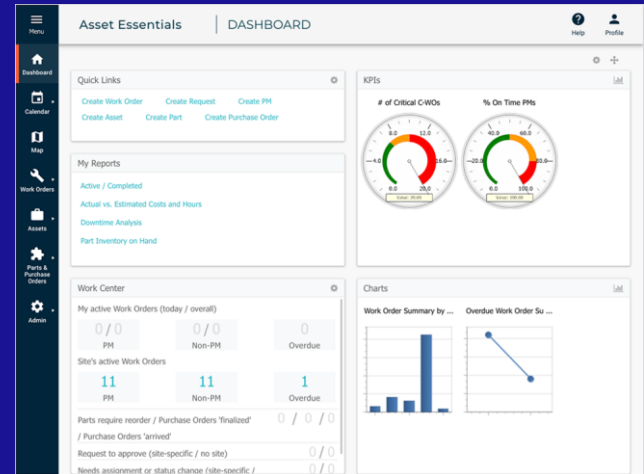
Real Time Monitoring System (I-Cube Software)



SPC Software



TPM Software



Traceability / Scan System



Order Release

Raw Materials

Set Up

Production

QC

Warehouse

Shipping



Tool Room



CNC



EDM

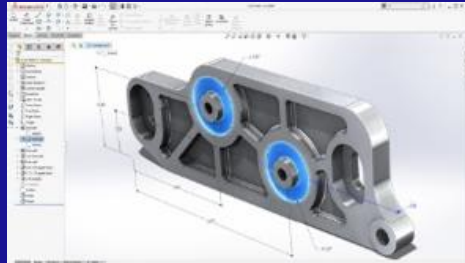
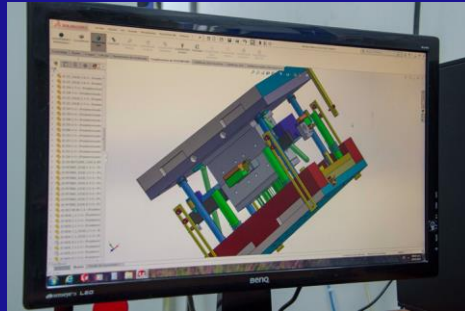


LASER
WELDING



ULTRASONIC
CLEANING

Engineering Changes



SOLIDWORKS

Professional Maintenance



Quality & Engineering

Visual Equipment & Design Software



CMM 3D Scan



**Dual Optical and video
measuring system
convert to DXF data**

Laboratory



**MICRO
VU**



**QUICK
SCOPE**



CMM



**GLOSS
METER**



**COLOR
COMPARISON**

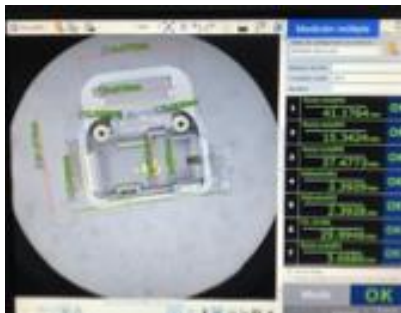


**DYNAMO
METER**

Equipment for analysis



IM Keyence



High speed data results



Humidity Analyzer



**Contracer
(Roughness)**



**MFI
Resin melt
Flow analyzer**



Types of Resins

Resin Type Production percentage

PP **34.7%**

PBT **24.2%**

POM **15.7%**

PA66 **24.2%**

PA **34.7%**

ABS **2.7%**

PPS **2.2%**

ABS+PC **2.0%**

TPE **1.5%**

PA6 **0.8%**

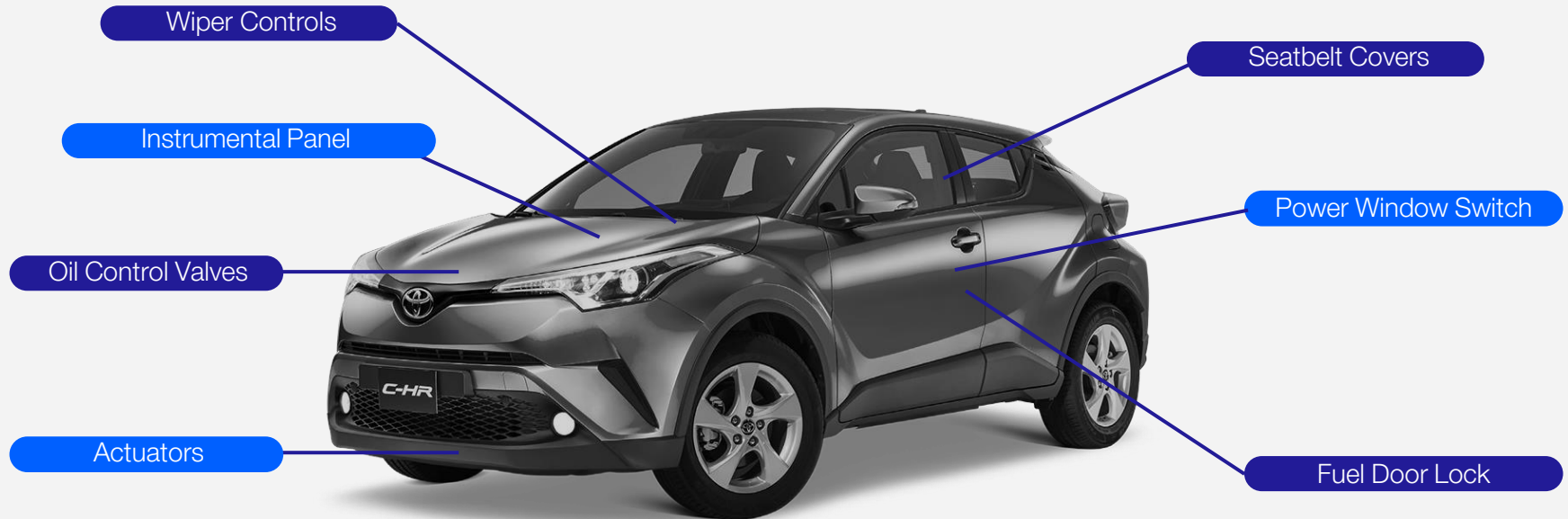
MB **0.7%**

PC **0.5%**

PA12 **0.4%**



Product Portfolio



OEM'S





Cosmetic, Functional & Safety Products.





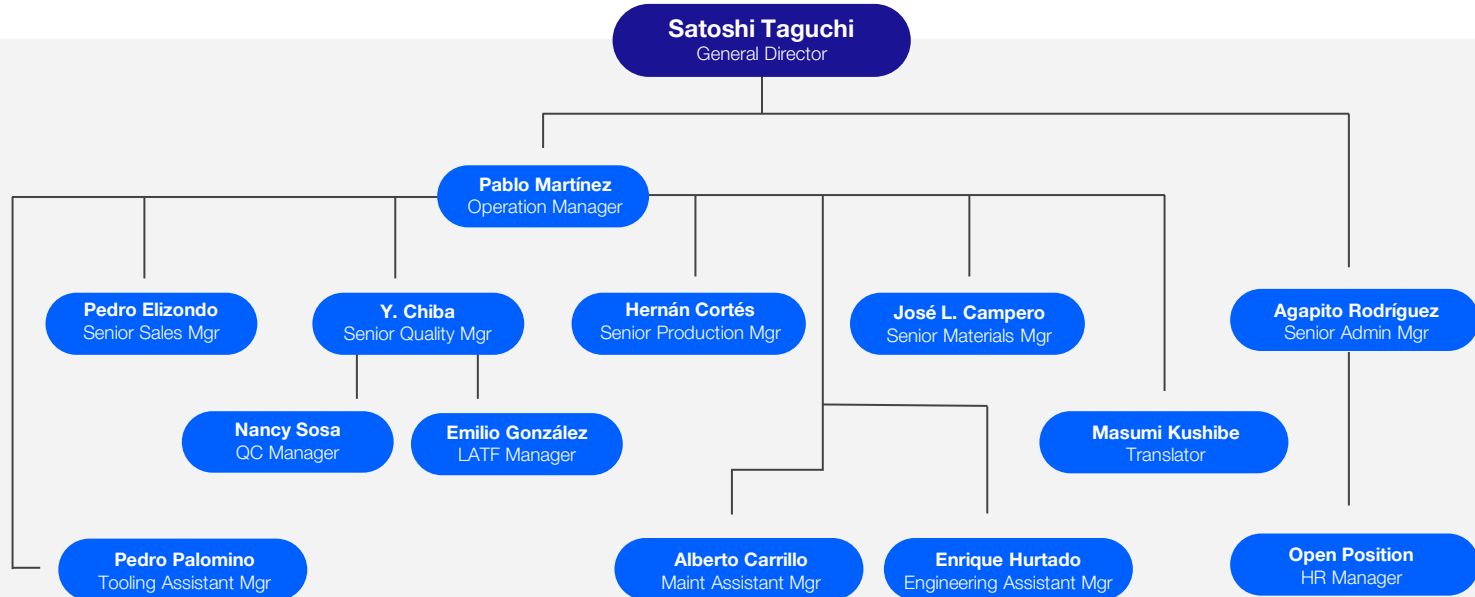
Tier 1

**Manufacturing
Location**

**Current Shipping
Routes**



Organization Chart



Global Footprint

12 Production sites

3 Overseas production site sales and technical offices





México

Apodaca, Nuevo León

1 Facility



China

Dalian / Suzhou

2 Facilities



Japón

9 Facilities
1 Tool Facility
1 Head Office

 SANKO MEXICO



¡Gracias! · Thank You! · ありがとうございます

Contact us: Mexico Cel. 818-253-3476

Office: (81) 8196-0176 E-mail: p.elizondo@sanko-mexico.com