

2022



**D&B D-U-N-S® Registered™**

Click here to confirm the online [D-U-N-S® Registered™ Profile](#)  
for ABT Manufacturing Services, S.A. de C.V.

Haga clic aquí para confirmar en línea [D-U-N-S® Registered™ Profile](#)  
para ABT Manufacturing Services, S.A. de C.V.



 **ABT**  
Manufacturing  
Services S.A. de C.V.



# Services

## CNC MACHINED PARTS

High mix, low and medium volume, small, medium size metallic and plastic components.

## SHEETMETAL PARTS

Process like cutting and bending.

## DESIGN AND MANUFACTURING WELDING AND CHECKING FIXTURES

**D&B** D-U-N-S® Registered™

Click here to confirm the online [D-U-N-S® Registered™ Profile](#)

for ABT Manufacturing Services, S.A. de C.V.

Haga clic aquí para confirmar en línea [D-U-N-S® Registered™ Profile](#)

para ABT Manufacturing Services, S.A. de C.V.



# The Business

We are a professional engineering company focused on custom metal working projects performed through its internal capabilities and outsourcing with strategic partners.

ABT ensures that customers specifications are met by the establishment of excellent quality control along the development and production phases.

A blue-tinted background image showing industrial machinery, including a large metal cylinder and various mechanical components.

**WE ARE MORE THAN A TOOLING WORKSHOP,  
WE ARE ENGINEERS.**

# Objectives

Our core interest is to accomplish a long-term relationship by a “**Complete Customer Satisfaction**” guarantee. More than 80 customers back up our service and commitment to delivery times.



We are a “**One Stop Supplier**” and a specialized manufacturer with capacities to machine unique complex parts from customized projects too low a medium volume production lots including assemblies.

# Time Line

ABT ESTABLISHED

*4 Employees*

BOSCH in USA first  
Customer

**2007**

9 Machines  
*22 Employees*

**2012**

*30 Employees*  
14 Machines

**2016**

*55 Employees*  
18 Machines  
33 Customers

**2019**

*80 Employees*  
25 Machines  
**New Facility of 3,447 m<sup>2</sup>**

**2021**

**2010**

First CNC Machine  
*12 Employees*  
Move to New Facility

**2014**

*26 Employees*  
11 Machines  
**ISO 9000 Certified**  
ERP Implemented

**2018**

*40 Employees*  
15 Machines  
Expand the  
facility from 500  
to 800m<sup>2</sup>

**2020**

*67 Employees*  
21 Machines

**2022**

*+90 Employees*  
*+30 Machines*



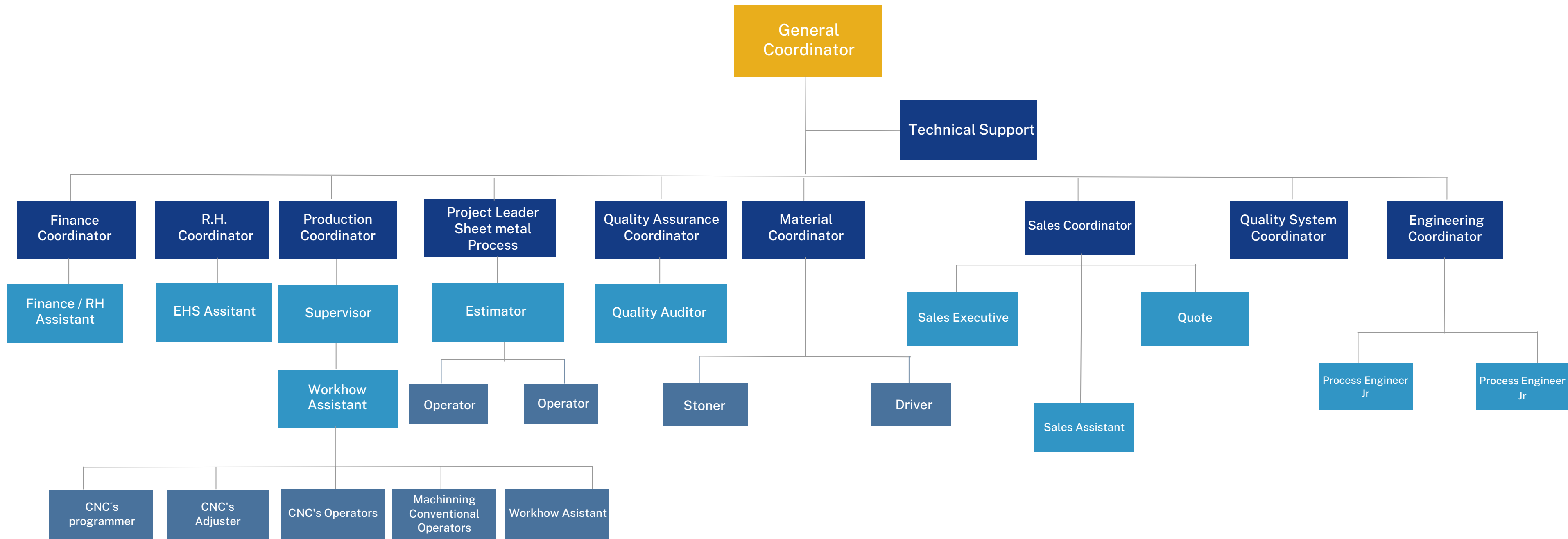
# Certification

## ISO 9001:2015 Certified

We also are working on getting ISO 14000 / 45001 implementation next may 2022.



# Organizational Chart



# Team ABT

Contact	Position	E-mail	Cell Phone	Process
Ing. Alfredo Baez	Executive Director	<a href="mailto:alfredo.baez@abtmexico.com">alfredo.baez@abtmexico.com</a>	818.020.7871	CEO/ Planning / Investment Planning
Ing. David Calderon	Plan Manager	<a href="mailto:david.calderon@abtmexico.com">david.calderon@abtmexico.com</a>	818.688.9216	Operations
Ing. Johana Gómez	Quality Engineer Coordinator	<a href="mailto:johana.gomez@abtmexico.com">johana.gomez@abtmexico.com</a>	811.886.5635	Quality Assurance / Quality System
Joel Laredo	Technical Support	<a href="mailto:joel.loredo@abtmexico.com">joel.loredo@abtmexico.com</a>	811.038.1569	Manufacturing
Ing. Amparo Treviño	Finance	<a href="mailto:amparo.treviño@abtmexico.com">amparo.treviño@abtmexico.com</a>	811.661.6852	Investment Planning / Resource to ABT Operations
Ing. Salvador Guerrero	Engineering Coordinator	<a href="mailto:salvador.guerrero@abtmexico.com">salvador.guerrero@abtmexico.com</a>	811.794.5110	Time Line By Project
Omar Castellanos	Production Coordinator	<a href="mailto:omar.castellanos@abtmexico.com">omar.castellanos@abtmexico.com</a>	818.707.6020	Lead Time Production by Program
Oswaldo Tolentino	Project Production Coordinator	<a href="mailto:oswaldo.tolentino@abtmexico.com">oswaldo.tolentino@abtmexico.com</a>	812.642.7159	New Projects Production
Alfredo Tellez	Human Resource	<a href="mailto:alfredo.tellez@abtmexico.com">alfredo.tellez@abtmexico.com</a>	811.543.5458	Labor Environment & Security
Nydia Sierra	Customer Service	<a href="mailto:abt.ventas@abtmexico.com">abt.ventas@abtmexico.com</a>	811.079.2013	JobBoss Leader, Procurement
José Astorga	Sales Coordinator	<a href="mailto:jose.astorga@abtmexico.com">jose.astorga@abtmexico.com</a>	811.029.0377	Commercial & Marketing
Juan Alfredo Suárez	Sales Project	<a href="mailto:juan.alfredo.suarez@abtmexico.com">juan.alfredo.suarez@abtmexico.com</a>	812.921.5662	New Project and Internal Support
Miguel Salazar	Maintenance	<a href="mailto:miguel.salazar@abtmexico.com">miguel.salazar@abtmexico.com</a>	811.389.8266	Preventive & Corrective
Adrian Reyes	Safety and Health	<a href="mailto:adrian.reyes@abtmexico.com">adrian.reyes@abtmexico.com</a>	812.590.7718	Inside & Outside Facility
Edgar Zamarrón	Project Leader Sheet Metal Process	<a href="mailto:edgar.zamarron@abtmexico.com">edgar.zamarron@abtmexico.com</a>	812.679.0970	Sheet metal process
Tania Martinez Alejandro	Buyer Coordinator	<a href="mailto:tania.martinez@abtmexico.com">tania.martinez@abtmexico.com</a>	811.510.9055	Supply Chain



# Sales Behavior

2020 Sales 2.15 USD Mlls

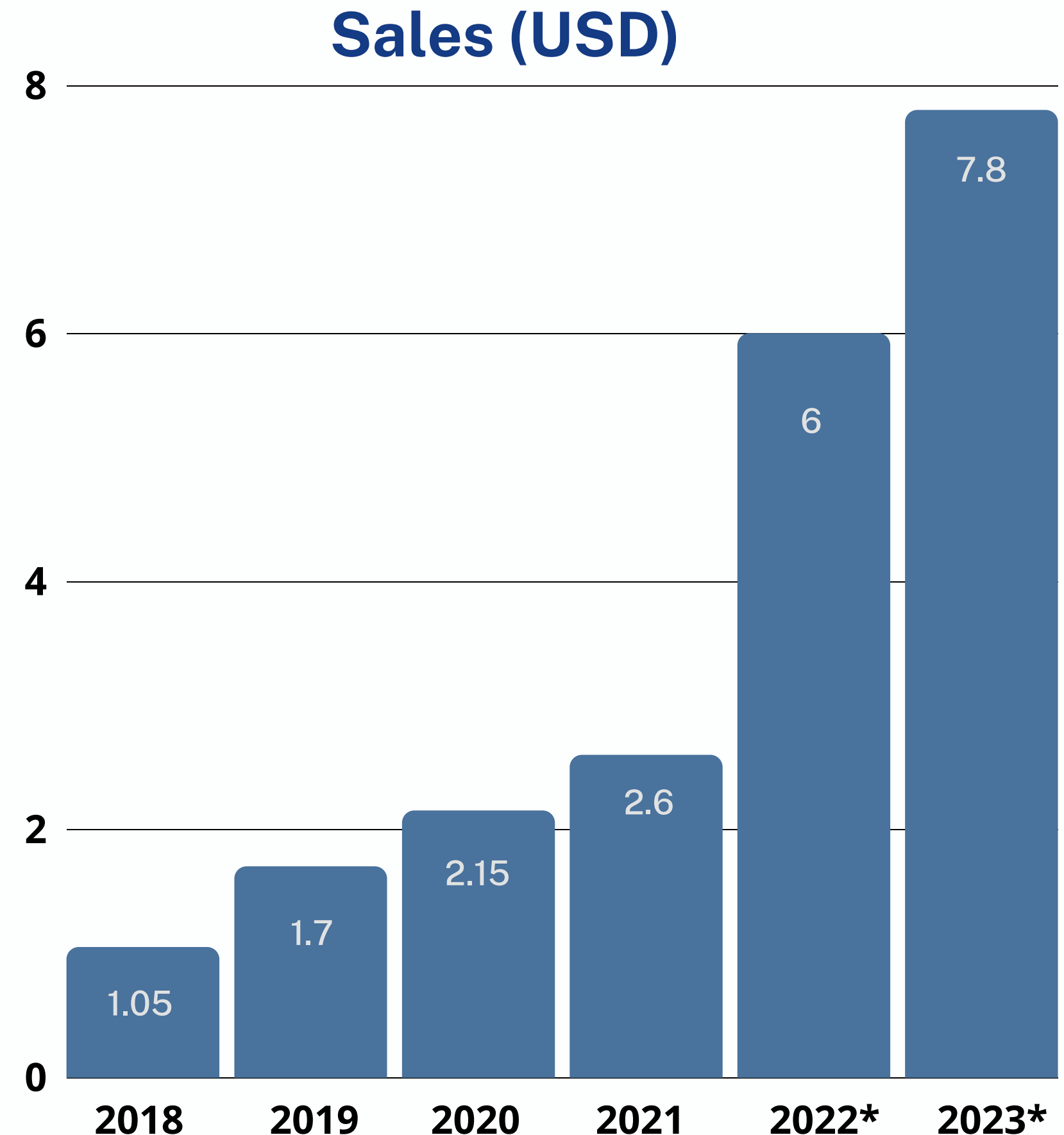
2021 Sales 2.6 USD Mlls

Increase 20.9%

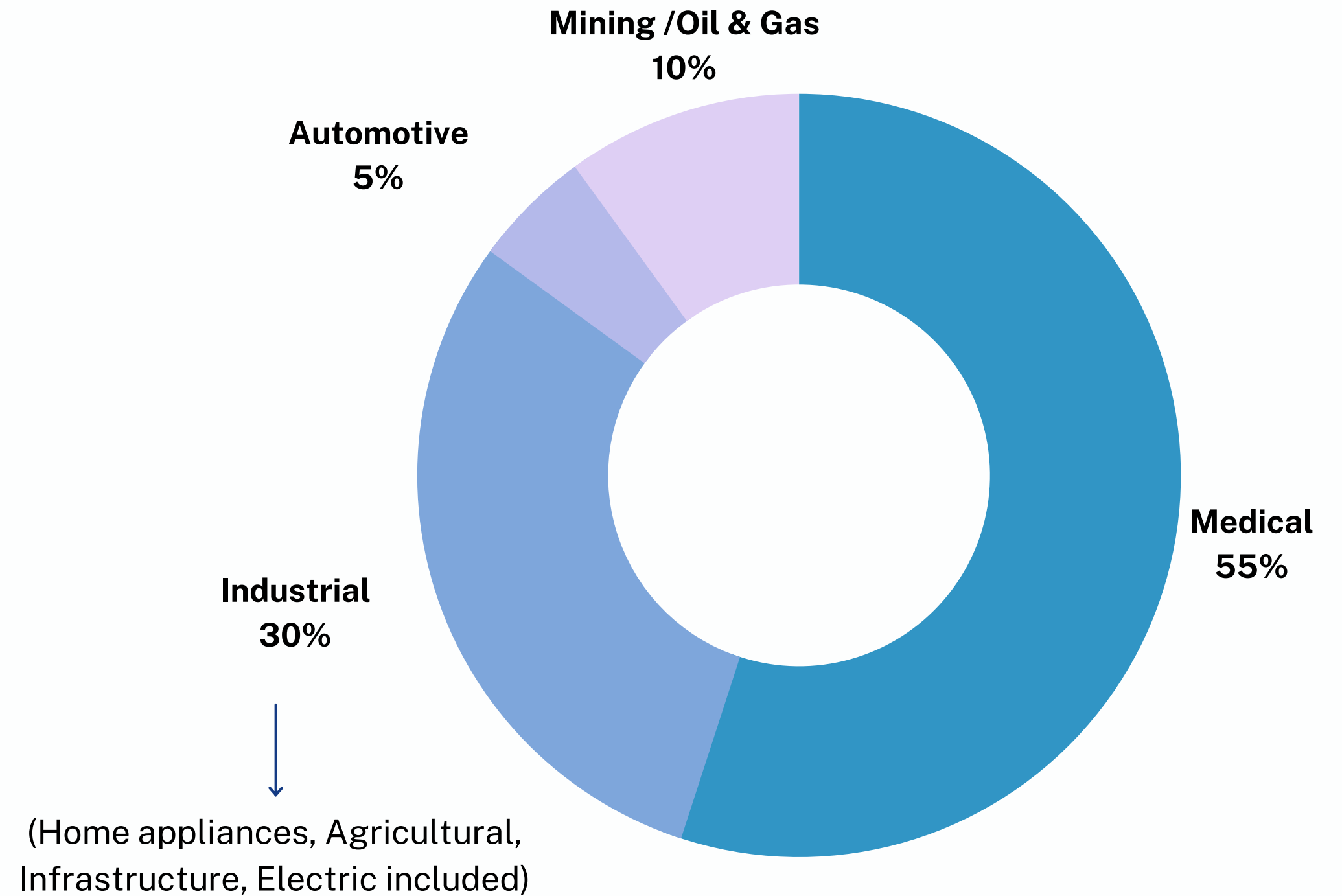
**ABT Grows every year**

28 different customers

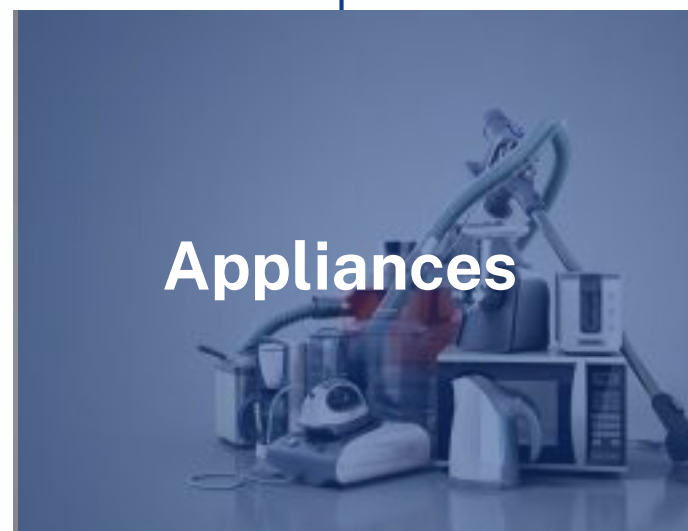
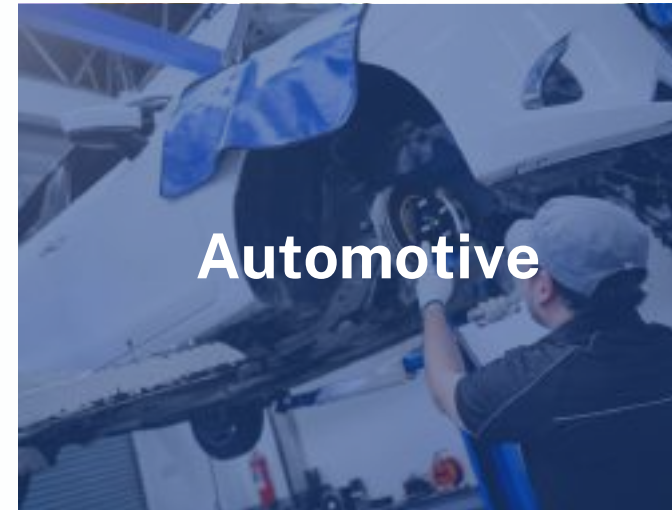
90/10 is in 6 customers



# Market Share



# Principal Markets





# Main Customers

Industrial  
30%

Oil&Gas/ Mining  
10%

Automotive  
5%

Medical  
55%



JOHN DEERE

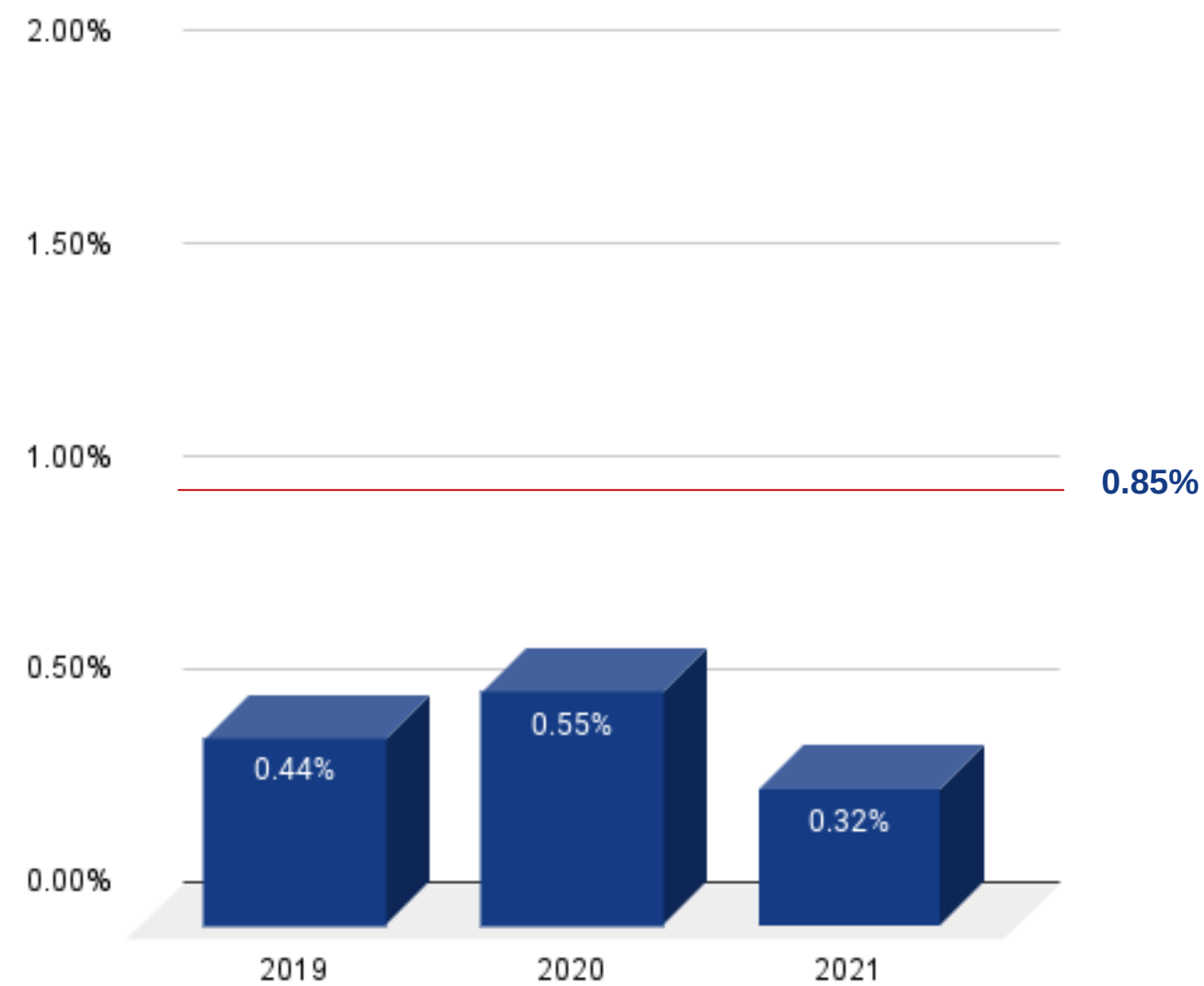


# Clusters & Associations that ABT is part of



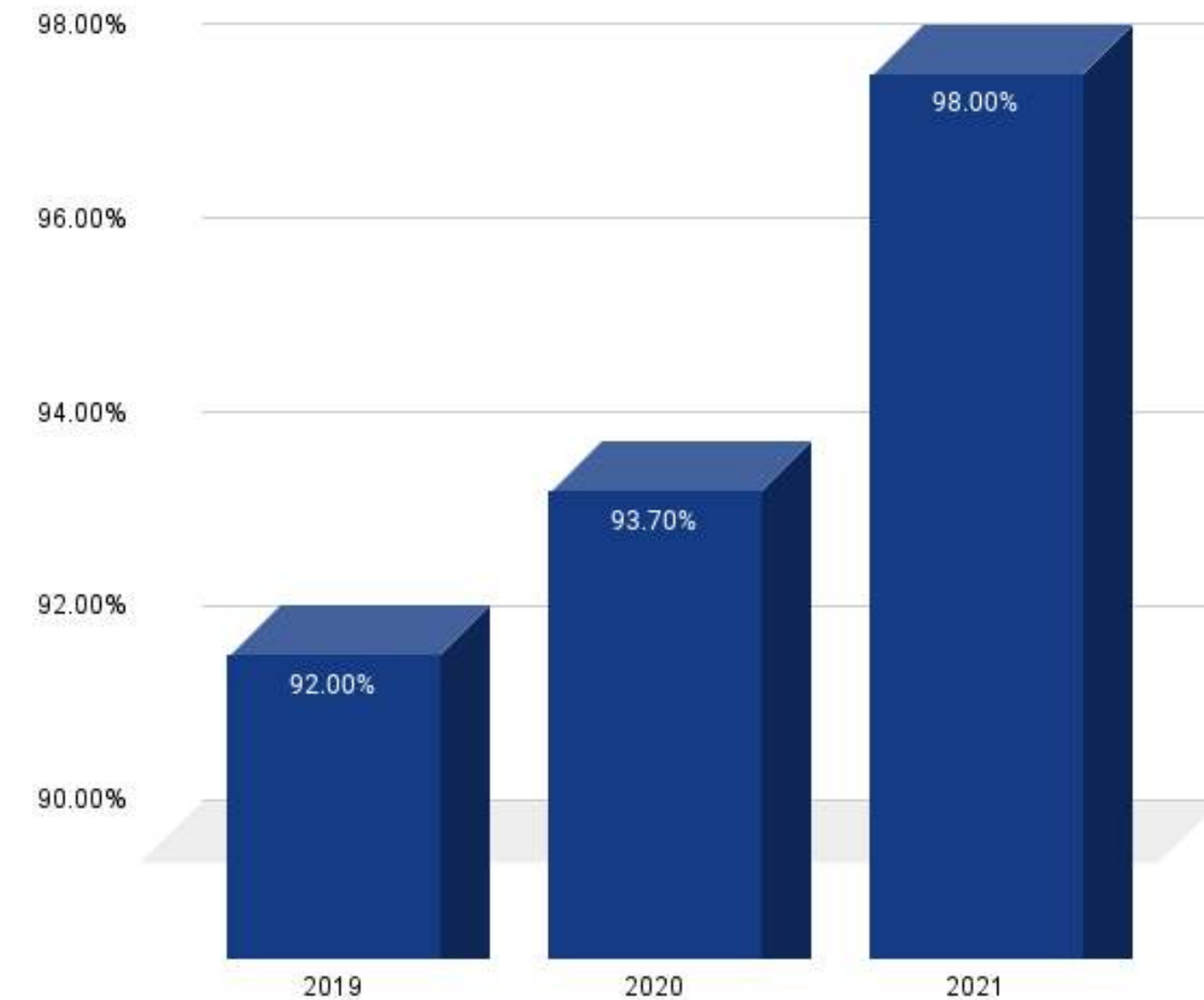
# Production and logistic indicators

## % Internal Scrap



## On time delivery

\*Without raw material





# Equipment on site



# New acquisitions

**Swiss type Lathe**  
**Brand: Tornos**



**CNC Bending Machine**  
**Brand: Yangli**



**Laser Cutting Machine**  
**Brand: Yangli**



**CNC Lathe**  
**Brand: Hass**



**Swiss type Lathe**  
**Brand: Citizen**



# ABT Quality



**Digital Scanner Microscope  
(Keyence)**

**Optimal comparator**

**Verniers**

**Go-No / Go's**

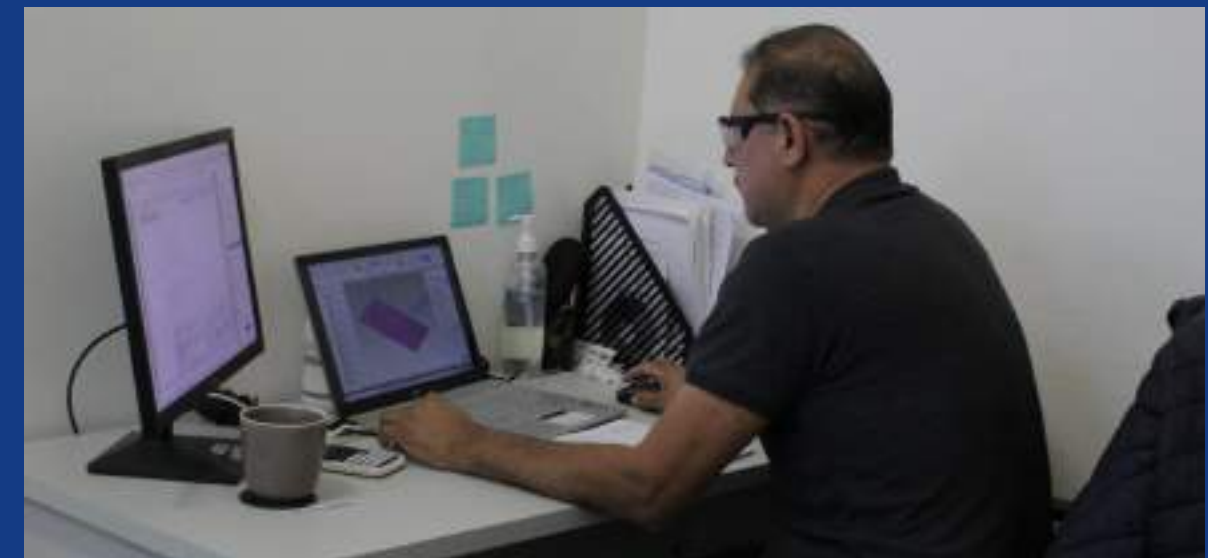
**CMM Measuring Arm**

**Marmol Tables**

**Pins**



# ABT Engineering Team



**7 Workstations**

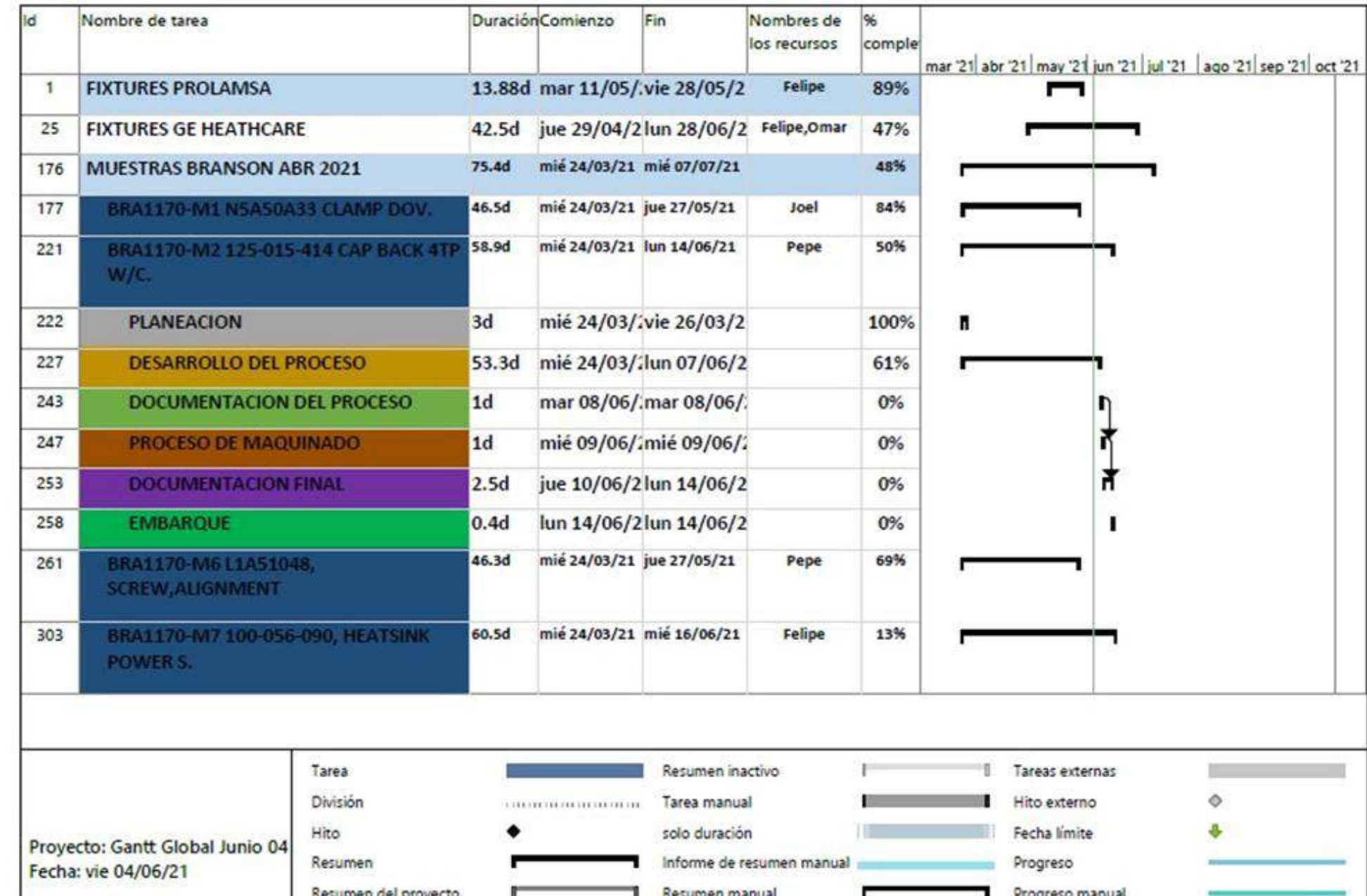
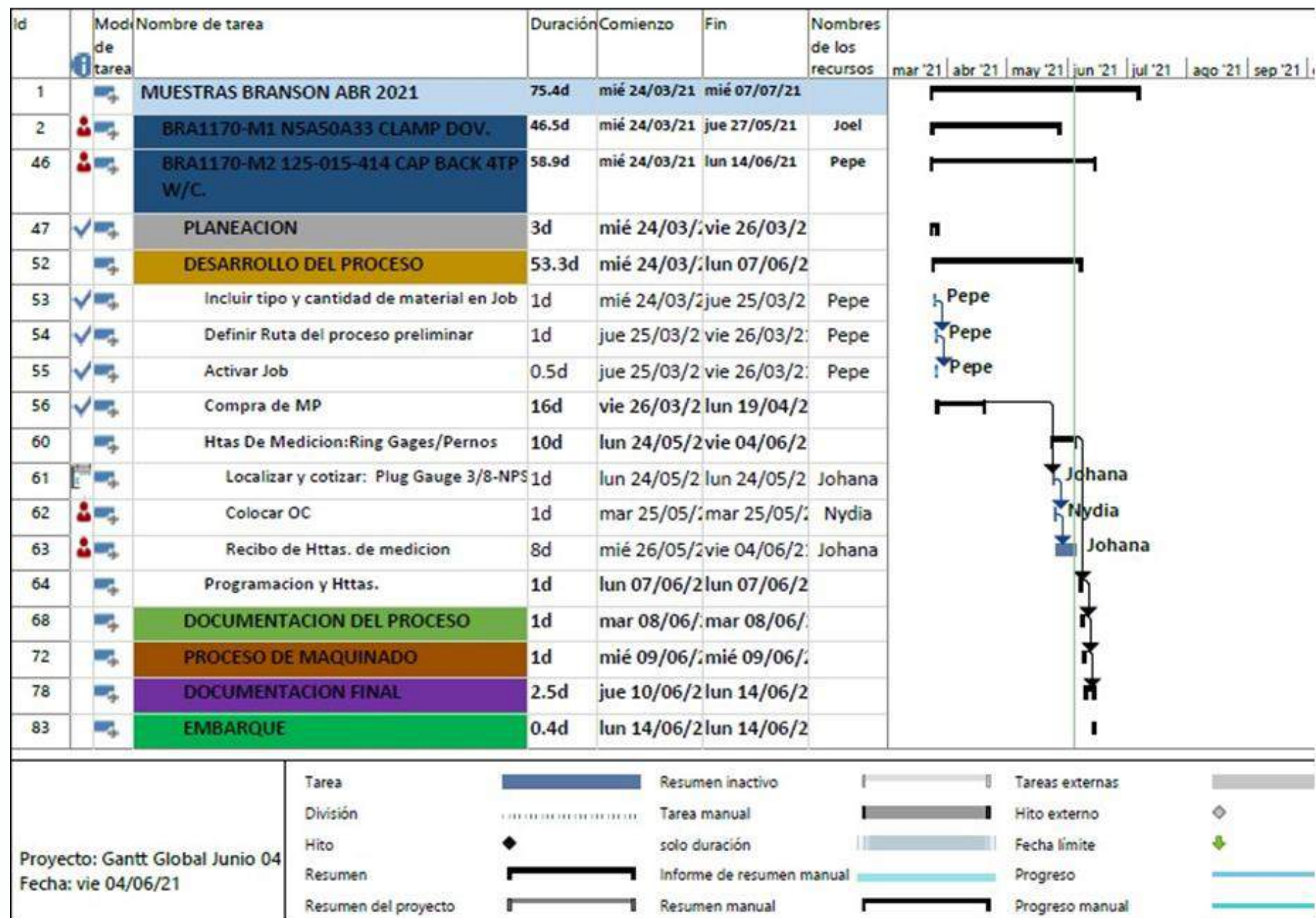
**3D Design**

**CAD CAM**

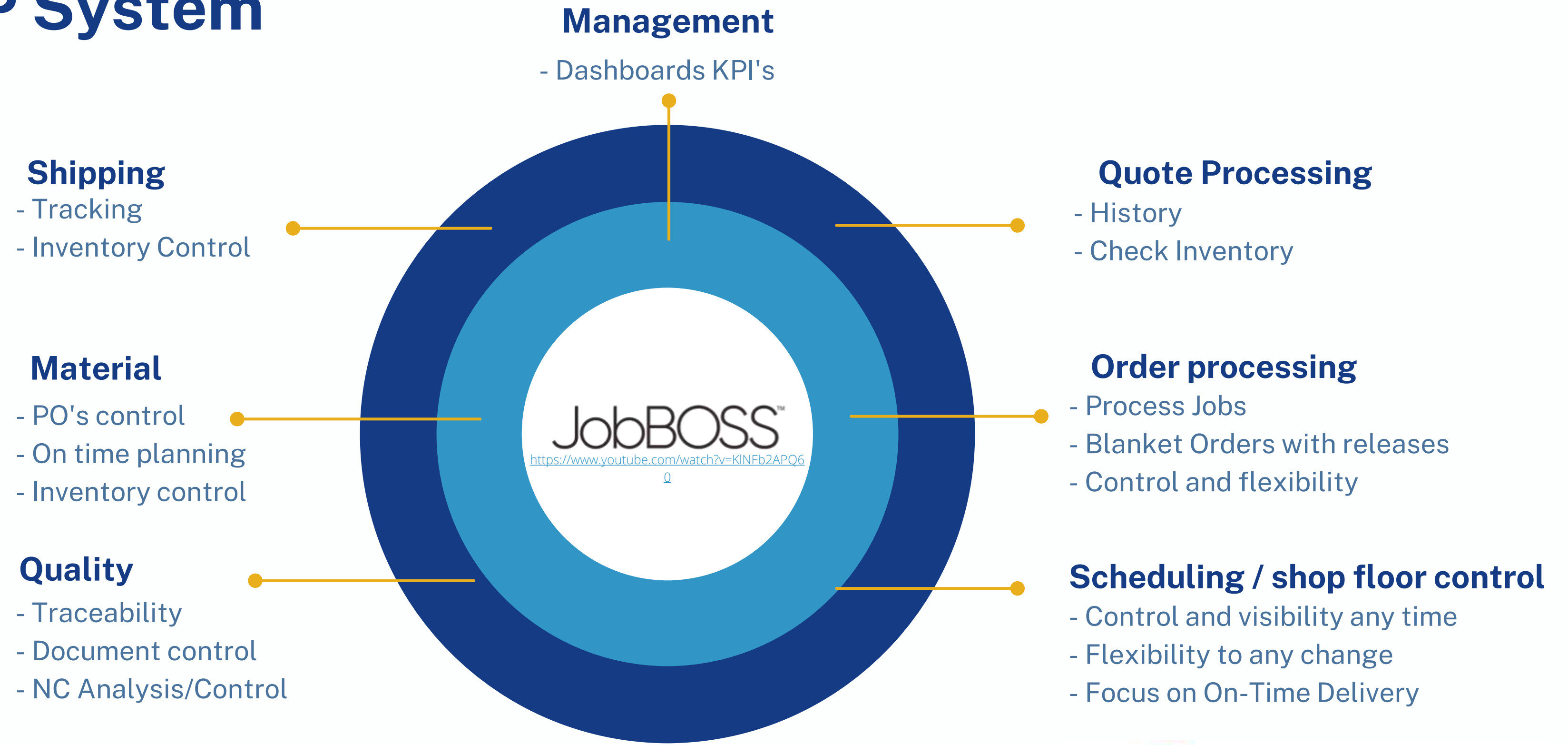
**Sr & Jr Engineers**



# ABT Engineering Team



## ERP System





# Machinery & Equipment



#	Equipment	Equipment type	Brand	Dmax Volteo	Feeder (Diam/L)	Long Bancada	X1	Y1	Z	Equipment Speed/HP/KW	Carrusel Torreta	Manuf. Year	Origin	Model	Series #	Controller brand	Controlled Model
1	FR-1	FRESADORA CONVENCIONAL	ALLMIL	N/A	N/A	N/A	12"	26"	12"	5440 RPM	1	DIC 2010	CHINA	9 x 49 / TAPER R8	103509	SINO	SDS6-2V
2	FR-2	FRESADORA CONVENCIONAL	SATURNO	N/A	N/A	N/A	12"	26"	12"	5440 RPM	1	MAR 2015	USA			SINO	SDS6-2V
3	FR-3A	FRESADORA CONVENCIONAL	LAGUN	N/A	N/A	N/A	12"	26"	12"	5440 RPM	1	DIC 2010	SPAIN	9 x 49 / TAPER R8	No legible	SINO	SDS6-2V
4	FR-3A	FRESADORA CONVENCIONAL	SATURNO	N/A	N/A	N/A	12"	26"	12"	5440 RPM	1	MAR 2015	USA	X6323A/TA PE R R8	150103	SINO	SDS6-2V
5	FR-5	FRESADORA CONVENCIONAL	SATURNO	N/A	N/A	N/A	15"	30"	12"	5440 RPM	1	MAR 2016	USA	X6323A/TA PE R R8	160183	SINO	SDS6-2V
6	TR-1	TORNO CONVENCIONAL	WESTON	N/A	N/A	N/A	15"	30"	14"	5440 RPM	1	ENE 2016	USA	X6323A/TA PE R R8	152039	SINO	SDS6-2V
7	TR-2	TORNO CONVENCIONAL	CLAUSING METOSA	14"	N/A	40"	N/A	N/A	38"	RPM:2000, 7.5 HP	1	MAR 2015	USA	Metosa / C1440	N/A	N/A	N/A
8	CNC-1	CENTRO DE MAQUINADO VERTICAL	VICTOR	16"	N/A	60"	N/A	N/A	58"	RPM:2000, 10 HP	1	AGO 2012	USA	Victor	No legible	N/A	N/A
9	CNC-1	CENTRO DE MAQUINADO VERTICAL	VIWA	N/A	N/A	N/A	18"	32"	18"	RPM: 4000	16	JUL 2010	MEX/TAIWAN	VF4BM400	46025FCEN022, year 2010	CENTROID	M400S
10	CNC-2	CENTRO DE MAQUINADO VERTICAL	VIWA	N/A	N/A	N/A	18"	40"	18"	RPM: 8000	16	OCT 2011	MEX/TAIWAN	VCM1050 M400	47037VCEN047, year 2011	CENTROID	M400
11	CNC-3	CENTRO DE MAQUINADO VERTICAL	HAAS	N/A	N/A	N/A	16"	30"	18"	RPM 10000	20	FEB 2021	USA	VF-2	1178932	HAAS	SECO. Q7
12	CNC-4	CENTRO DE MAQUINADO VERTICAL	DAEWOO/DOO SAN	N/A	N/A	N/A	18"	40"	18"	RPM: 8000	24	MAY 2007	KOREA	DMV3016 HS DS	DSVM07HS00339 C9, Yr2007	FANUC	i series
13	CNC-5	CENTRO DE MAQUINADO VERTICAL	VIWA	N/A	N/A	N/A	12"	25"	15"	RPM: 8000	12	MAY 2014	MEX/TAIWAN	VCM3 M400	14021-V-CEN-021, Yr 2014	CENTROID	M400
14	CNC-6	CENTRO DE MAQUINADO VERTICAL	VIWA	N/A	N/A	N/A	12"	30"	15"	RPM: 8000	12	MAY 2014	MEX/TAIWAN	VCM3 M400	14020-V-CEN-020, Yr 2014	CENTROID	M400
15	CNC-7	CENTRO DE MAQUINADO VERTICAL DOBLE PALLET	KIRA	N/A	N/A	N/A	12"	20"	12"	RPM: 10000	24	SEPT 2013	JAPAN	KDT32CD / DT32C	T32D0063	FANUC	SECO OI-MD
16	CNC-8	CENTRO DE MAQUINADO VERTICAL	HAAS	N/A	N/A	N/A	16"	26"	16"	RPM: 15000	20	2020	USA	DT-2	1177284	HAAS	SECO. Q7

# Machinery & Equipment



#	Equipment	Equipment type	Brand	Dmax Volteo	Feeder (Diam/L)	Long Bancada	X1	Y1	Z	Equipment Speed/HP/KW	Carrusel Torreta	Manuf. Year	Origin	Model	Series #	Controller brand	Controlled Model
17	TCNC-1	TORNO HORIZONTAL CNC	VIWA	8"	N/A	12"	N/A	N/A	N/A	RPM: 800	4	ENE 2012	MEX/TAIWAN	VTC-1422- T400	47059TCEN056, year 2012	CENTROID	T400
18	TCNC-2	TORNO HORIZONTAL CNC	OKUMA	8"	N/A	12"	N/A	N/A	N/A	14.9 KW, RPM 3000	12	ABR 2015	TAIWAN	GENOS L300-M	PA425, year 2015	OKUMA	OSP-P300L-R
19	TCNC-3	TORNO HORIZONTAL CNC	OKUMA	8"	N/A	12"	N/A	N/A	N/A	14.9 KW, RPM 3000	12	NOV 2017	TAIWAN	GENOS L2000-e	L2E0009, year 2017	OKUMA	OSP-P300LA
20	TCNC-4	TORNO HORIZONTAL CNC	HAAS	8"	N/A	12"	N/A	N/A	N/A	20 HP, RPM 4000	12	ABR 2019	USA	ST-15	3114567, year 2019	HAAS	SECO. Q7
21	TCNC-5	TORNO HORIZONTAL CNC	OKUMA	6"	EDGE 1.5"/36"	12"	N/A	N/A	N/A	RPM 3000	12	MAR 2020	TAIWAN	GENOS L250II-e	ND0694	OKUMA	OSP-P300LA
22	TCNC-6	TORNO HORIZONTAL CNC	OKUMA	6"	EDGE 1.5"/36"	12"	N/A	N/A	N/A	RPM 3000	12	MAR 2020	TAIWAN	GENOS- L250II-e	ND0695	OKUMA	OSP-P300LA
23	TCNC-7	TORNO HORIZONTAL CNC	OKUMA	6"	EDGE 1.5"/36"	12"	N/A	N/A	N/A	RPM 3000	12	MAR 2020	TAIWAN	GENOS- L250II-e	ND0693	OKUMA	OSP-P300LA
24	TCNC-8	TORNO HORIZONTAL CNC	HAAS	12"	2.5"/36"	16"	N/A	N/A	N/A	20 HP, RPM 4000	12	2021	USA	ST-15		HAAS	SECO. Q7
25	TS-1	TORNO TIPO SUIZO	TORNOS	N/A	1"/144"	7.5/8"	N/A	N/A	N/A	RPM 10000	22	OCT 2019	SWITZERLAN D	DT26 tornos		FANUC	
26	TS-2	TORNO TIPO SUIZO	CITIZEN L32	N/A	1 1/4"/144"	9"	N/A	N/A	N/A	RPM 800	19-30		SWITZERLAN D	CITIZEN L32		CITIZEN	
27	REC- PLANA	RECTIFICADORA PLANA AUTOM.	KENT	20"	N/A	15"	20"	10"	15"	RPM 10000	1	ENE 1999	TAIWAN	SCS-102 AHD	39335	N/A	N/A
28	SIERRACINT A 1	SIERRA CINTA	TTMC	12"	N/A	12"	12"	N/A	12"	1 HP	1	NOV 2017	USA	TTMC	N/A	N/A	N/A
29	SIERRACINT A 2	SIERRA CINTA	TTMC	12"	N/A	12"	12"	N/A	12"	1 HP	1	NOV 2017	USA	TTMC	A15081865	N/A	N/A
30	SIERRACINT A 3	SIERRA CINTA	WESTON	12"	N/A	14"	12"	N/A	14"	3 HP	1	OCT 2020	USA	TGK-4220	N/A	N/A	N/A
31	MARCADOR A	MARCADORA DE PUNTOS	SIC	12"	N/A	15"	12"	9"	15"	N/A	1	ABR 2015	FRANCE	C153	86800	N/A	N/A
32	COMPRESO R	COMPRESOR	INGERSOLL RAND	N/A	N/A	N/A	N/A	N/A	N/A	ACUM. CYTSA 1000 LTS.	N/A	NOV 2017	USA/MEX				
33	MONTACAR GAS	MONTACARGAS	HYSTER	N/A	N/A	N/A	N/A	N/A	N/A	1 TON	N/A	NOV 2017	USA				
34	CORTADORA LASER	CORTADORA LASER POR FIBRA	YANGLI	N/A	N/A	N/A	118"	59"	N/A	2 KW	N/A		CHINA	GL3015F- 2KW	2016010132	N/A	RESONADOR IPG MOD YLR
35	DOBLADORA CNC	DOBLADORA ELECTRO HIDRAULICA	YANGLI	N/A	N/A	125"	N/A	N/A	N/A	100 TONS, 3 + 1 EJES	N/A		CHINA	YANGLI PB1032	2125010032	DELEM DAS3T	DELEM



# ABT NEW FACILITY

## *AVANTE INDUSTRIAL PARK*



- 3,447 square meters of productive area
- 35 parking lots
- 2 loading and unloading
- Docks for trucks included





# Production Plant







Line 1



Conventional  
Machining



Line 3

Line 4





# ABT finish goods and warehouse





The logo for ABT, consisting of a blue circular icon with a stylized 'A' and 'B' inside, followed by the letters 'ABT' in a bold, blue, sans-serif font.

# ABT New Process Area



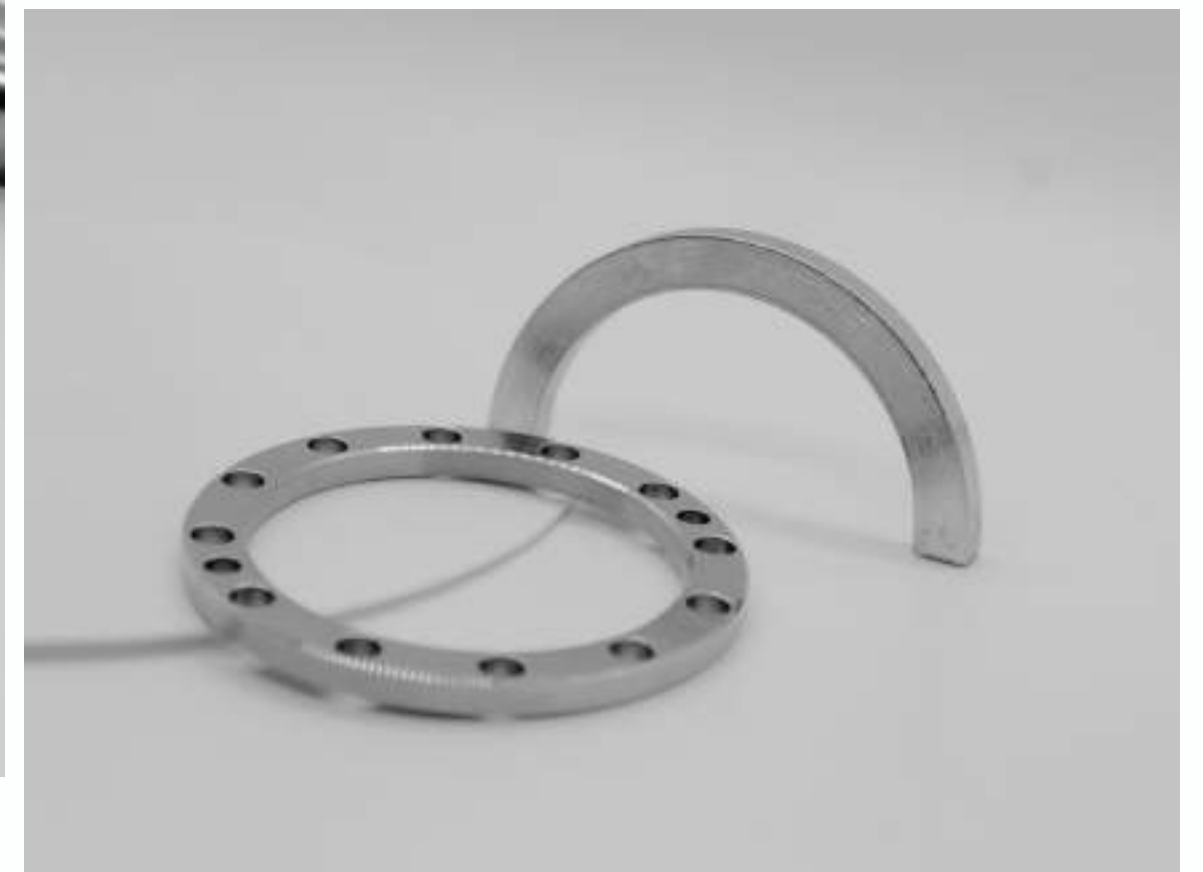
# Machined turned parts

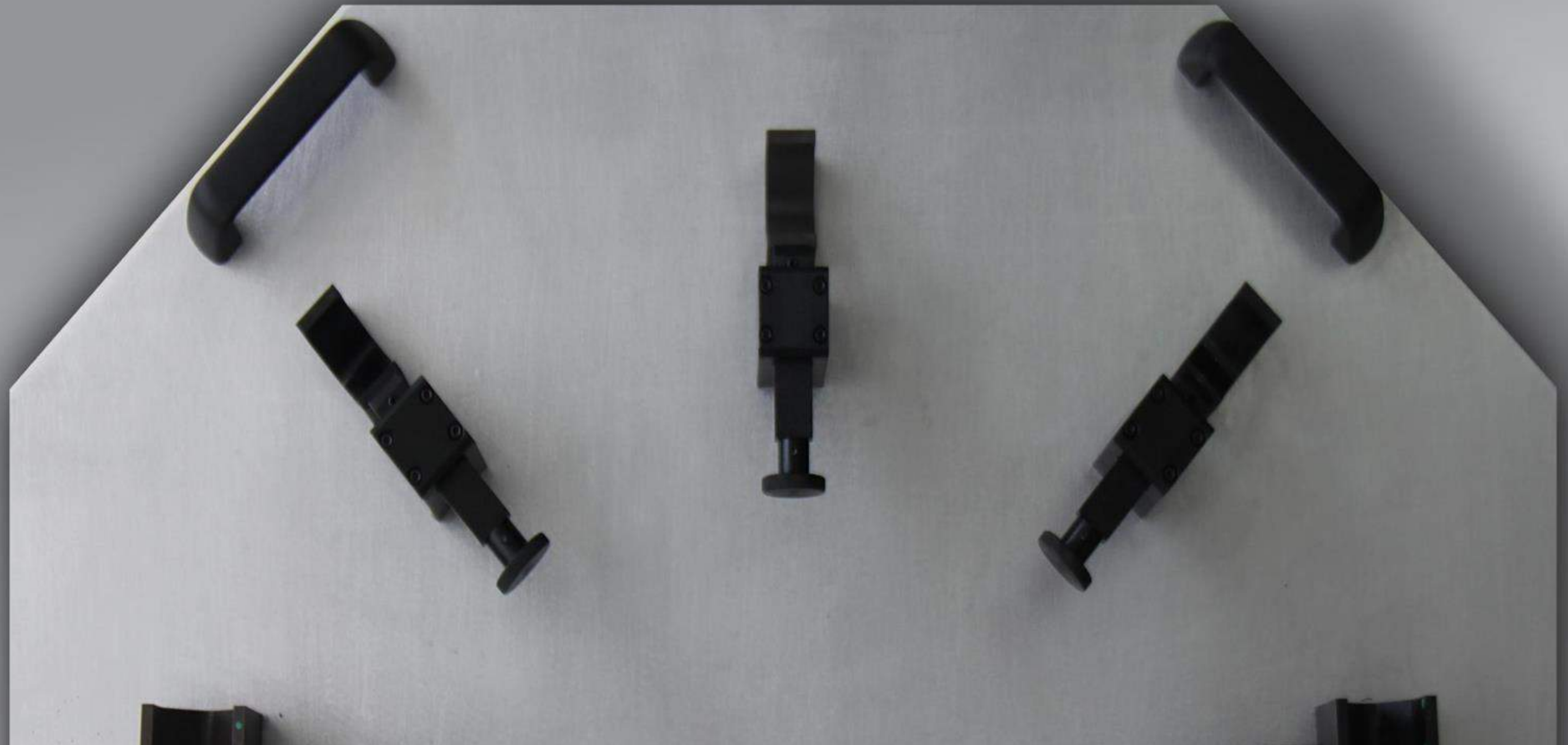






# Machined milling parts

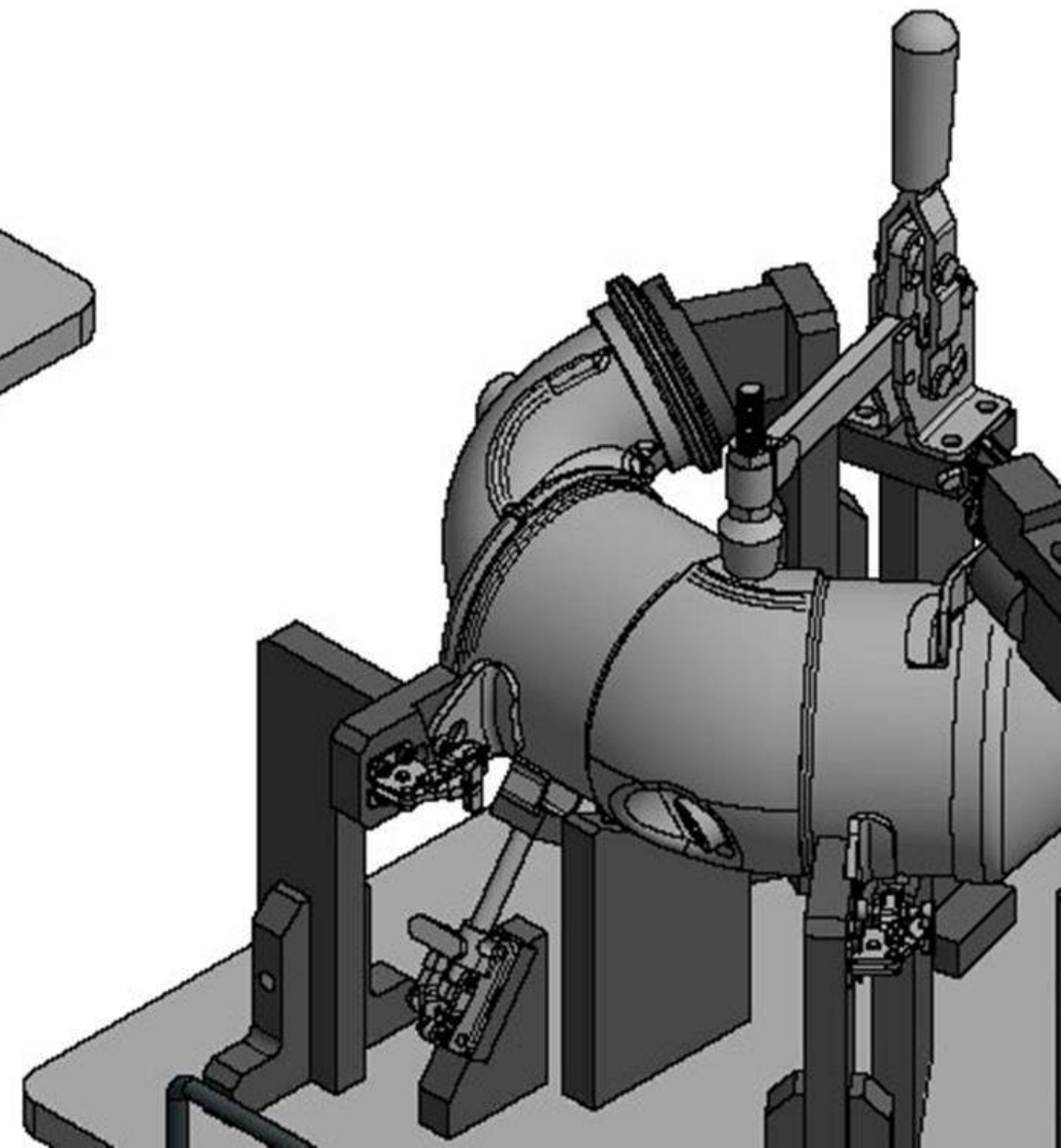
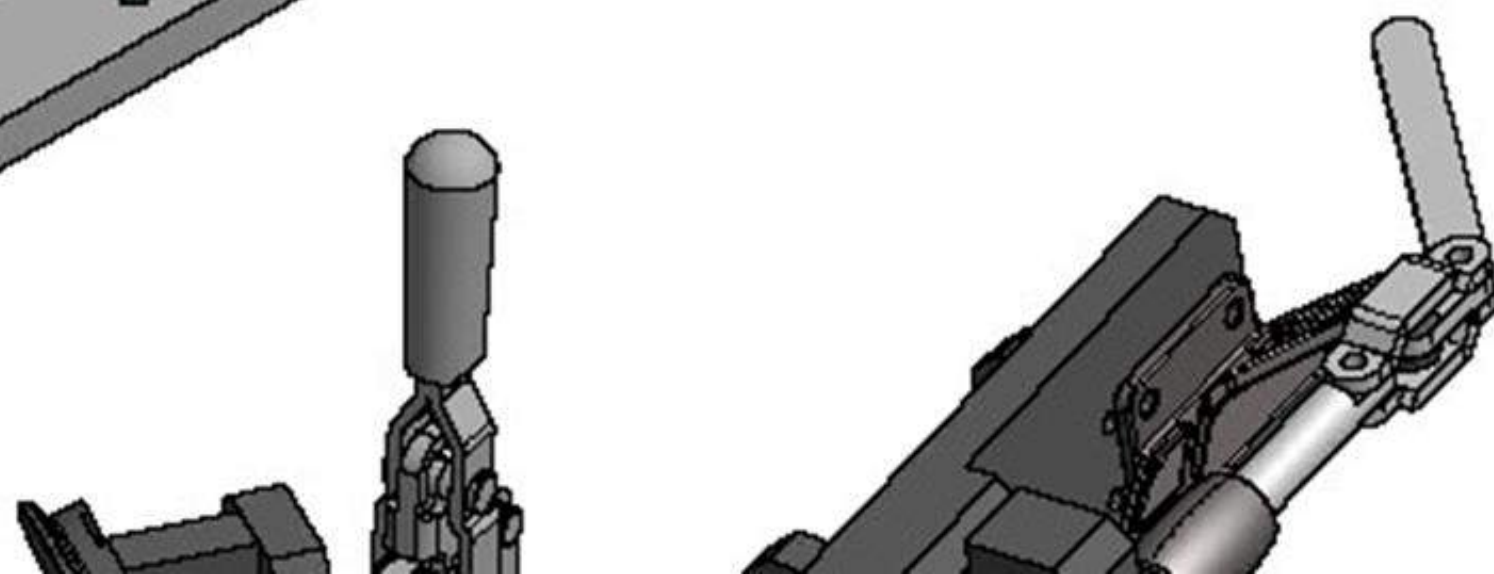
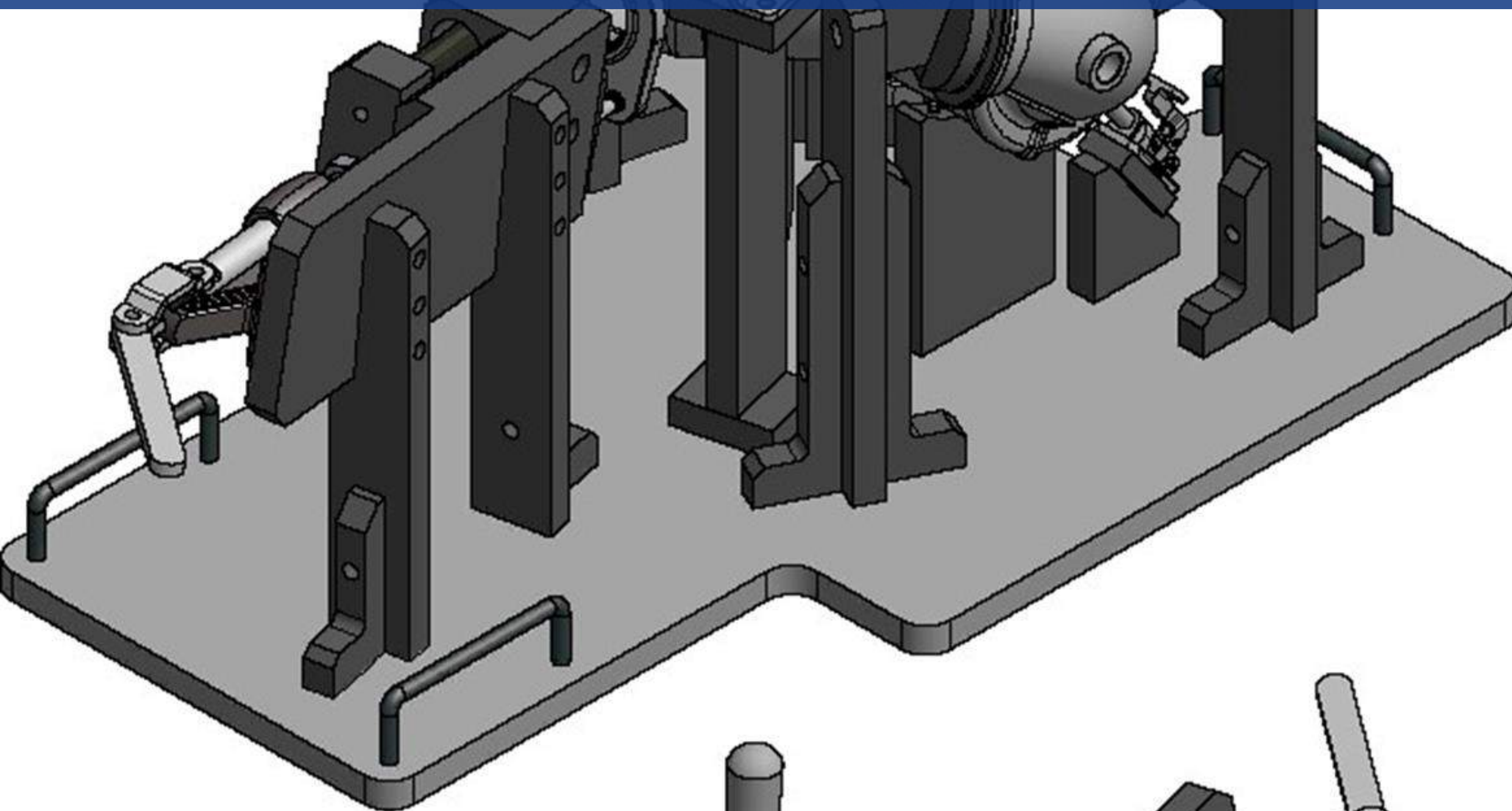




# Checking fixtures



# Welding fixtures





# Raw Materials



Aluminum 6061  
T6



Brass



Mild Steel 1018, 1045,  
12L14, 4140, A36



Engineering plastics:  
nylamid, acetal, UHMW



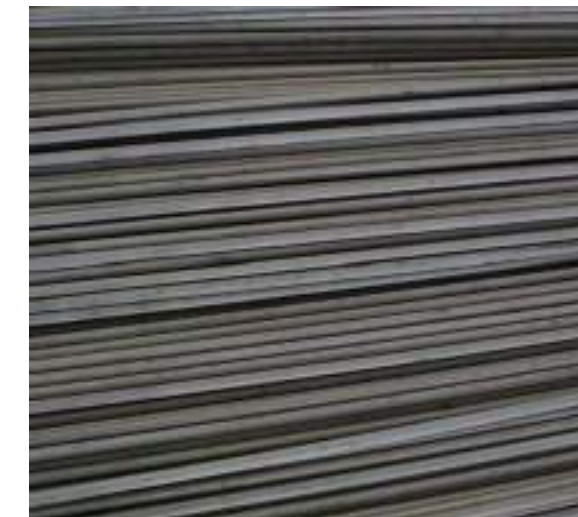
Stainless Steel 304,  
316



Copper 1100



Titanium



Grade tool Steel D2  
A2, M2, M4

# Key Company Goals for 2022

New customers:

- Low volume & high mix
- Medium volume

Expand to new markets:

- Heavy trucks industry
- Medical industry

Retain satisfied customers:

- Service (OTD improvement)
- Prices (cost reduction)
- Quality (process standarization)



# Key Company Goals for 2022

## Strategy:

- Process standarization (efficiency & productivity improvement) ✓
- ERP use improvement ✓
- Lean manufacturing ✓
- Core tools implementation ✓
- Health environmental safety ✓
- ISO 14000 / 45001 implementation next may 2022

## Tactics:

- Investment in new machinery ✓
- New facility (3,447 m2) ✓
- Develop new processes (sheet metal welding, cutting, bending, etc.) ✓

# Investment Plan & Growing 2021 - 2023

Investment in equipment:

- 2 Horizontal Machining CNC
- 8 Vertical Machining CNC 4 axes double pallet
- CNC Machining 5 axes
- 4 Turning Center
- 2 Swiss turning center ✓

New Processes:

- Laser cutting ✓
- CNC Bending ✓
- Punching
- Welding
- Painting



# Investment Plan & Growing 2021 - 2023

What would be the main interest for your company?

- - Which type of process do you need from us?
- - What type requirements do you have to feel satisfied with ABT?
- - Which type of components do you need from this process
- - Do you have any expansion plan that ABT could be part of, like a partnership or a joint venture?
- - What type of reliable supplier you need for support?
- - In particular, what do you require from ABT?

# Contact Us



## David Calderon

*General Manager*

[david.calderon@abtmexico.com](mailto:david.calderon@abtmexico.com)

## Alfredo Baez

*Director*

[alfredo.baez@abtmexico.com](mailto:alfredo.baez@abtmexico.com)

## Sheet Metal Core Team

## Edgar Zamarrón

*Project Leader Sheetmetal Process*

*Cel. 812.679.0970*

[edgar.zamarron@abtmexico.com](mailto:edgar.zamarron@abtmexico.com)

## Machining Core Team

## José Astorga

*Sales Coordinator*

*Cel. 811.029.0377*

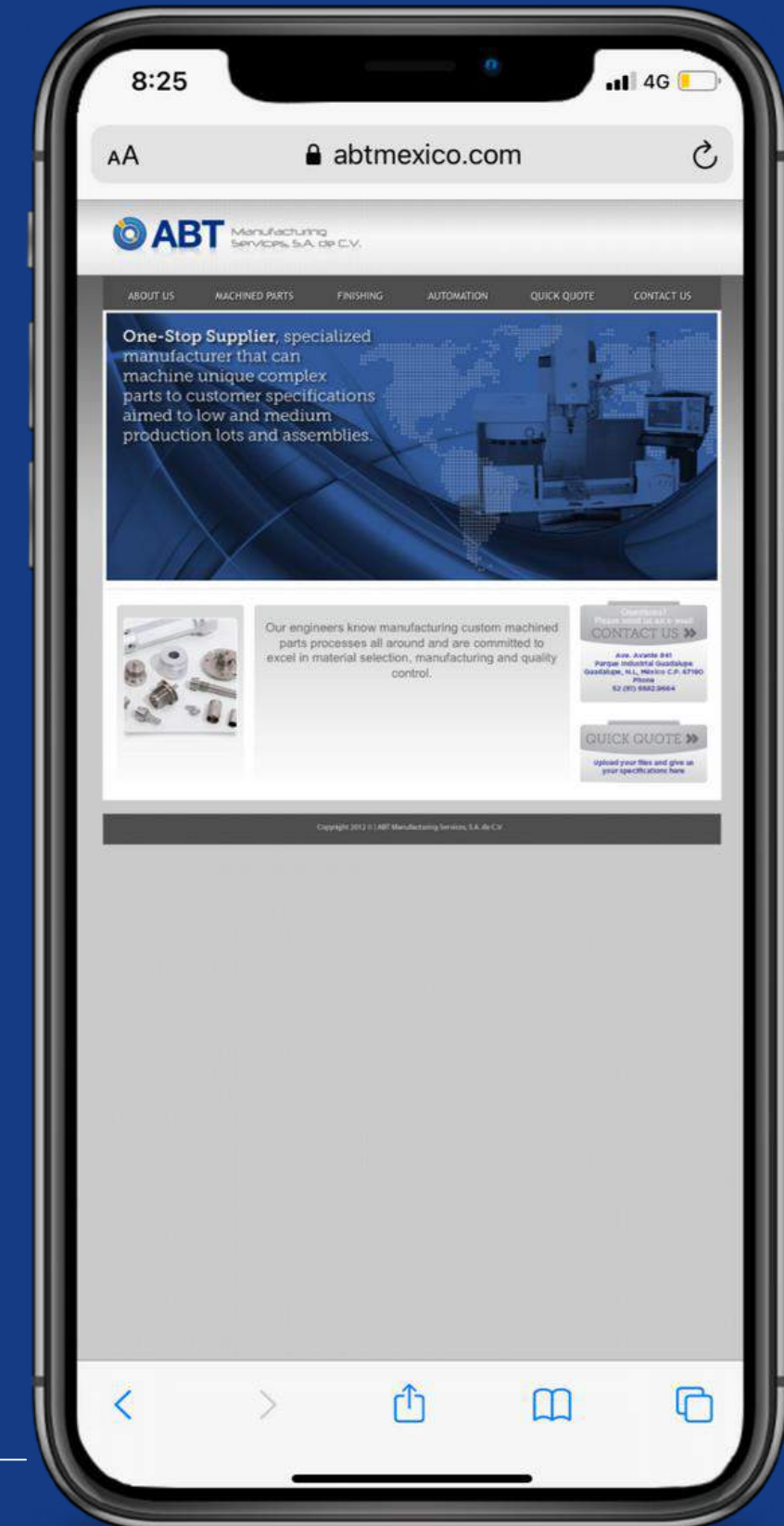
[jose.astorga@abtmexico.com](mailto:jose.astorga@abtmexico.com)

## Juan Alfredo Suárez

*Sales Coordinator*

*Cel. 812.921.5662*

[Juan.Alfredo.suarez@abtmexico.com](mailto:Juan.Alfredo.suarez@abtmexico.com)



Av. Avante 841 Parque Industrial Avante  
Guadalupe  
Guadalupe, Nuevo León, México CP 67190  
T. +52 (81) 8882 9664

