



Accudyn Business Overview

Dec 2021

Accudyn

A Summary of our Capabilities & Outlook

Industry Leading Injection Molding

- Custom Injection Molder that Provides Technical, Innovative Solutions to our Customers
- Adding Value by Expanding our Manufacturing Capabilities through the Incorporation of New Technologies
- Global Presence with Customers and Suppliers



Accudyn

A Company of Values



WELL-BEING OF OUR
PEOPLE



RELATIONSHIP WITH
OUR CUSTOMERS



SUSTAINABILITY OF
OUR BUSINESS



ENGAGEMENT IN
OUR COMMUNITIES

Accudyn History – Key Milestones



1998

Accudyn founded in
Erie PA



2007

Established
Accudyn de Mexico
in Chihuahua,
Mexico



2012

Added Internal
Tooling Capability
with Acquisition of
Cascade Tool



2013 - 2016

Major Expansion at
Accudyn Erie

Accudyn de Mexico
Moves to a New
Location

Company-Wide ERP
Transition to IQMS



2017

Engineering Center
Expansion in Erie



2018 - 2020

Added Capacity and
Assembly Capability
in Chihuahua

Organizational
Structure / Key
Personnel Additions

Operational
Efficiency

Strategic Planning

Managing the
Impact of COVID
Pandemic

Accudyn Erie

Location – Erie, PA (86,000 sq. ft.)

Employees – 160+

Presses – 50 (20 to 500 tons)

Certifications – ISO 9001:2015

UL QMMY2 (E476744)



Accudyn Chihuahua

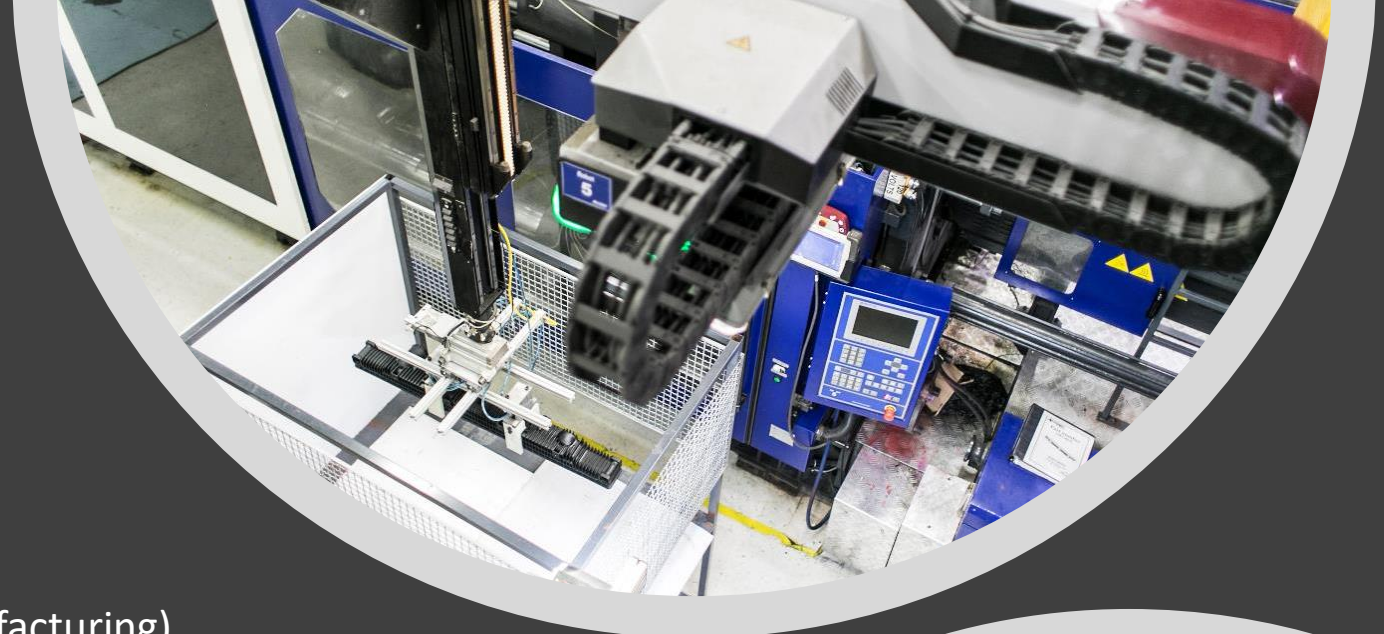
Location – Chihuahua, MX (48,000 sq. ft. – Manufacturing)
(21,000 sq. ft. - Distribution Center)

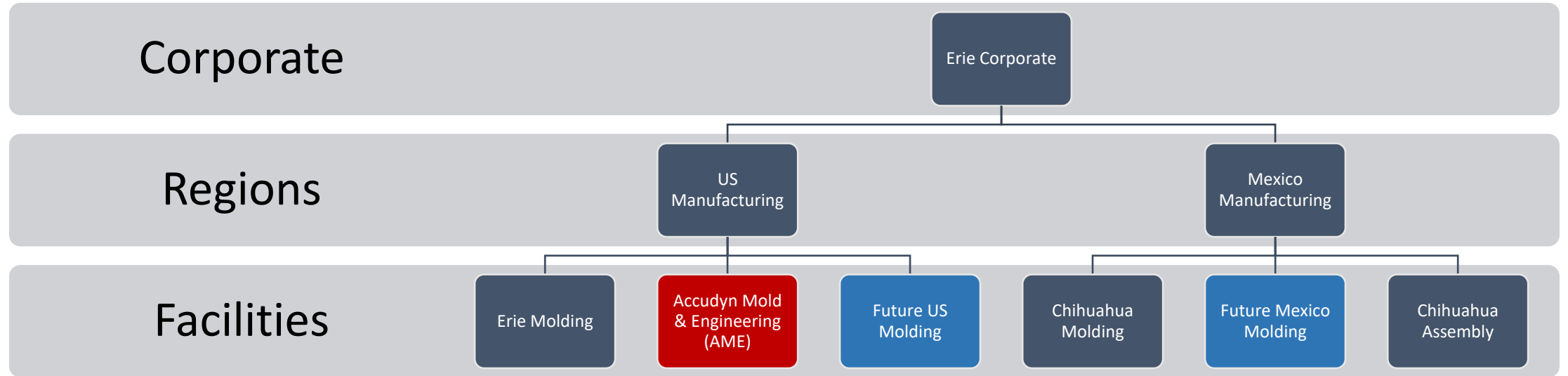
Employees – 400

Presses – 52 (40 to 900 tons), 2-Shot

Certifications

IATF 16949:2016,
ISO 9001:2015,
UL QMMY2 (E476744)
VDA 6.3 Compliance
CCAP
FDA Registration





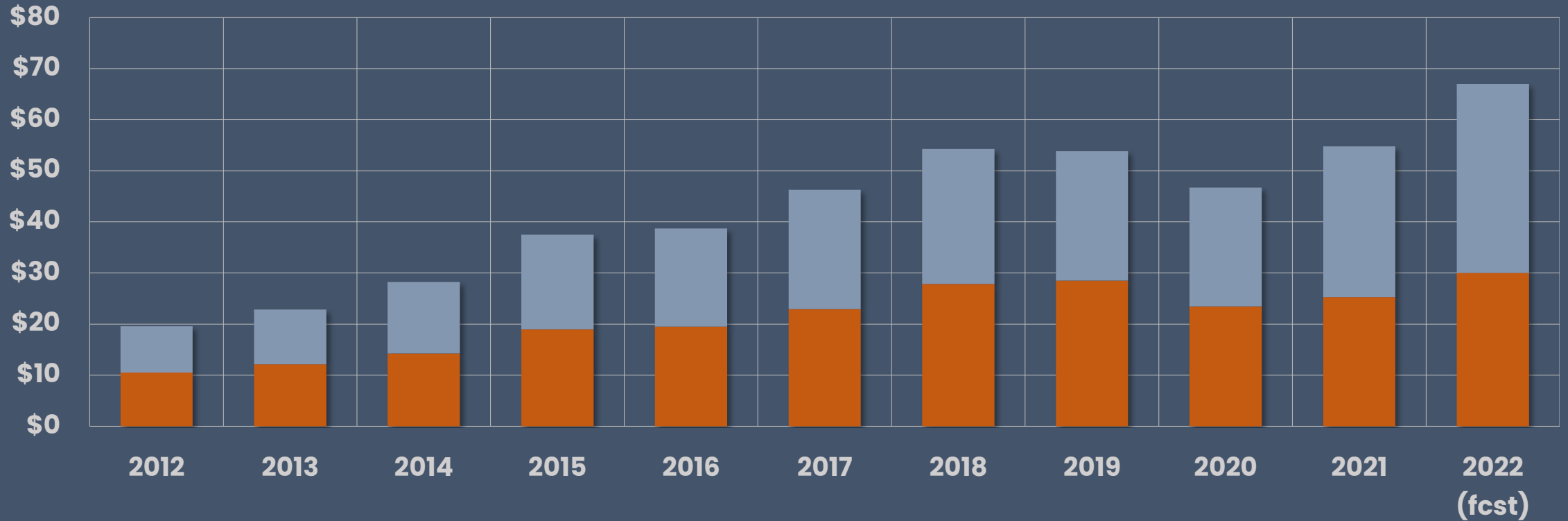
Organizational Structure

Sales Review

A Review of Performance and Growth

Accudyn Sales History

Sales (Million USD)

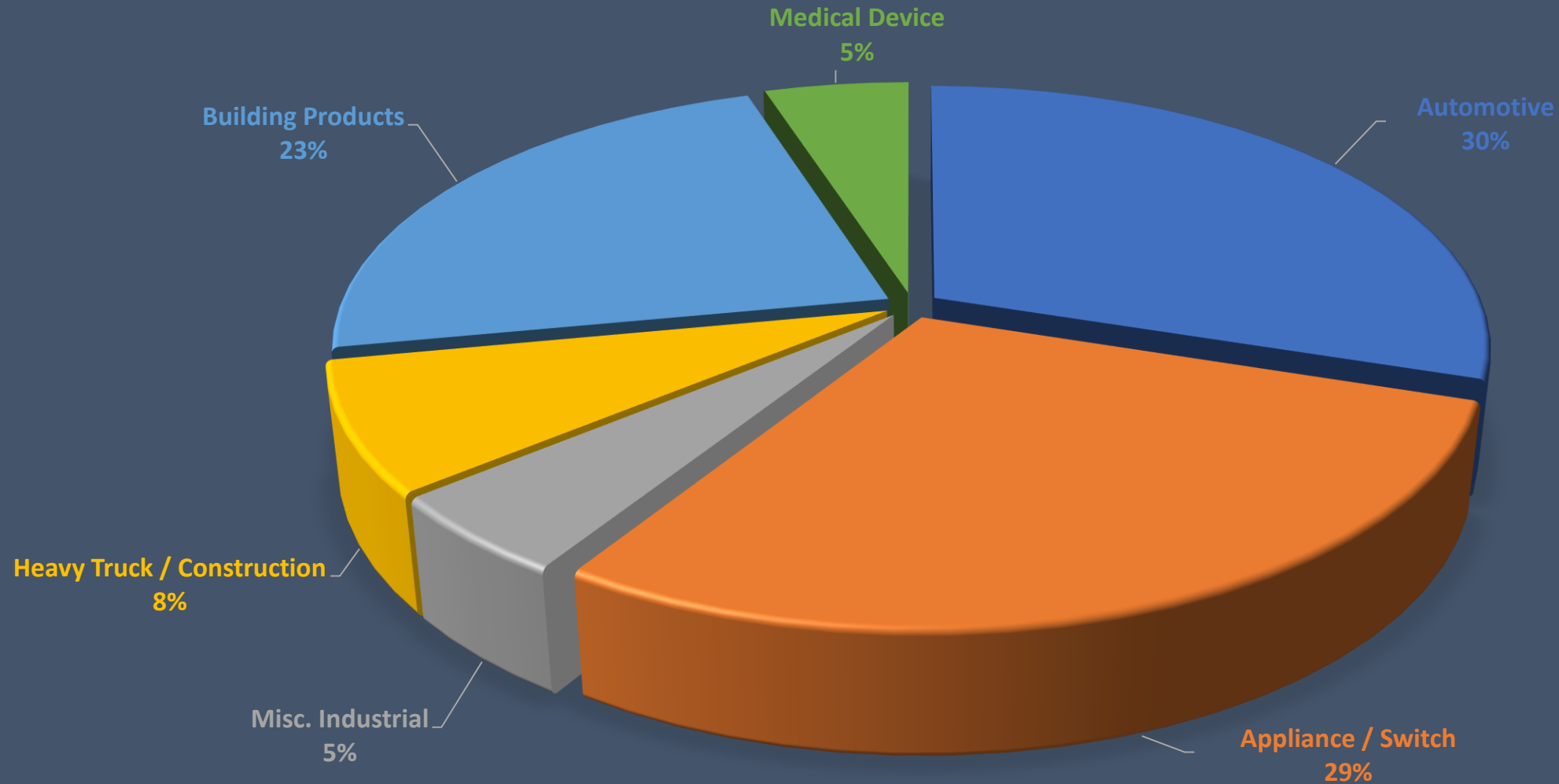


Accudyn Erie



Accudyn Chihuahua

Market Segment Diversification



Delphi
Technologies

 **YAZAKI**

 **KONGSBERG**
AUTOMOTIVE

 **TECVOX**
connecting via innovation.

 **TITANX**

Autoliv

 **Freudenberg**

 **MODINE**

• **A P T I V** •

LEONI

 **LEAR**
CORPORATION

NIFCO

HANON
SYSTEMS

MAHLE®

 **Visteon**

 **BOURNS**®

 **TRISTONE**

motherson 

Honeywell

Customer Diversification


Electrical Components
International

 **LUTRON**®

 **EMERSON**

 **resideo**

xylem
Let's Solve Water

SIGMATRON
INTERNATIONAL

JABIL

Hays
leveland
Div. of UniControl Inc.

TECMARK
CORPORATION

 **OETIKER**®
Connecting Technology

 **Clopay**®

 **CONMED**®

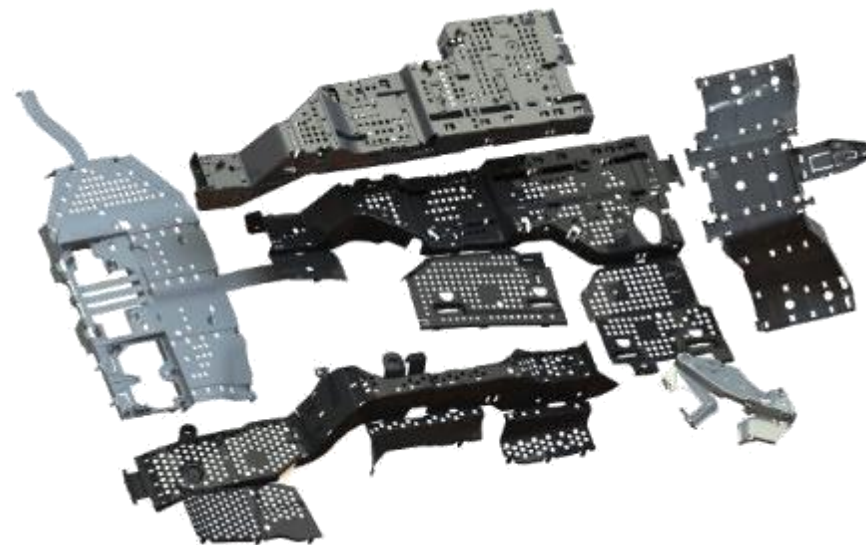
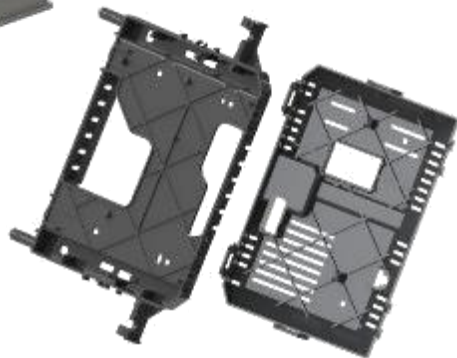
 **keytronic**

 **signify**

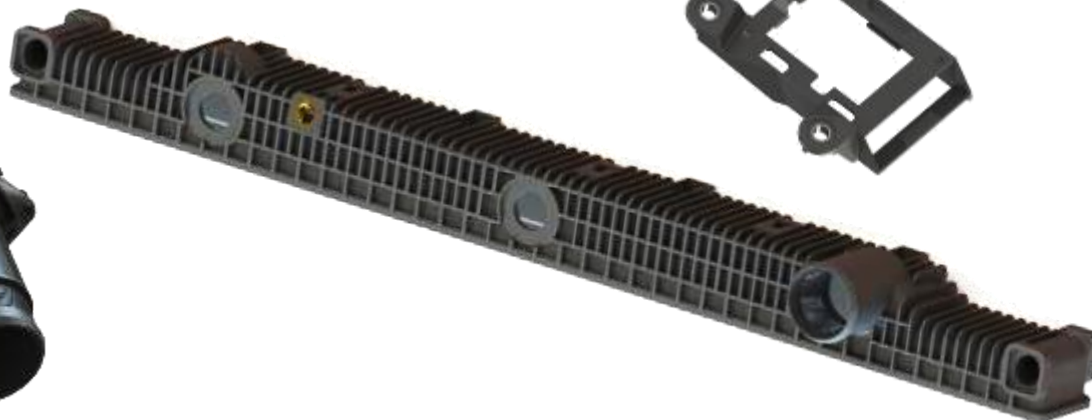
MSA
The Safety Company

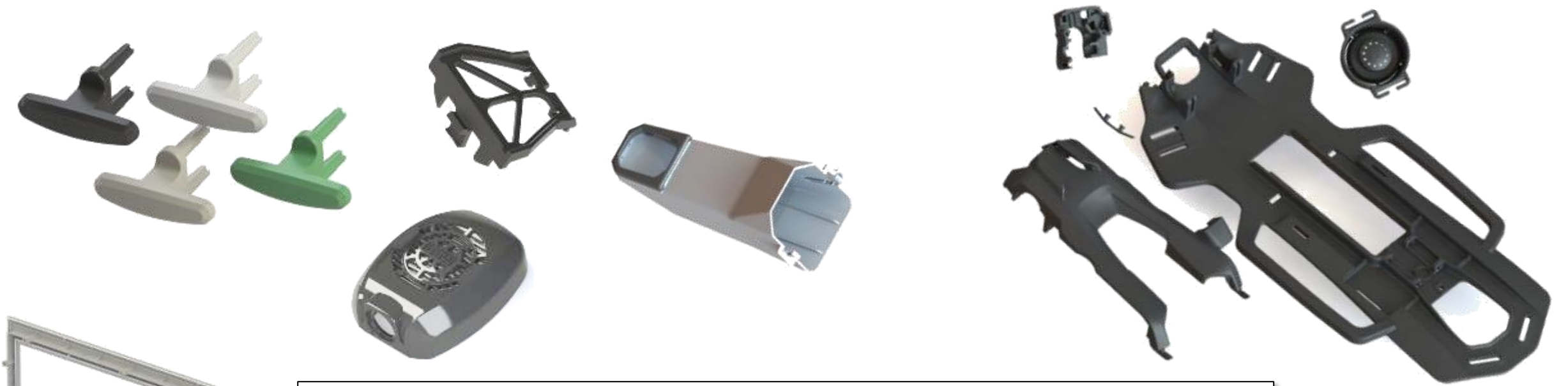
flex®

 **invisalign**®

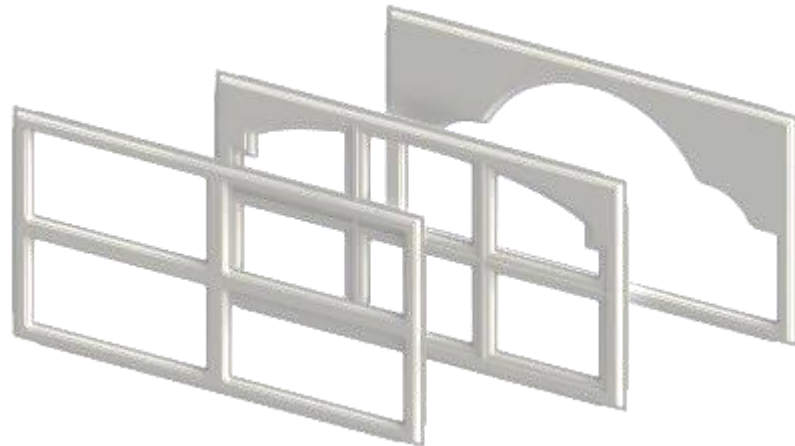


Products - Automotive
& Heavy Truck





Products - Misc. / Industrial



Engineering & Tooling

Overall Technical Capabilities

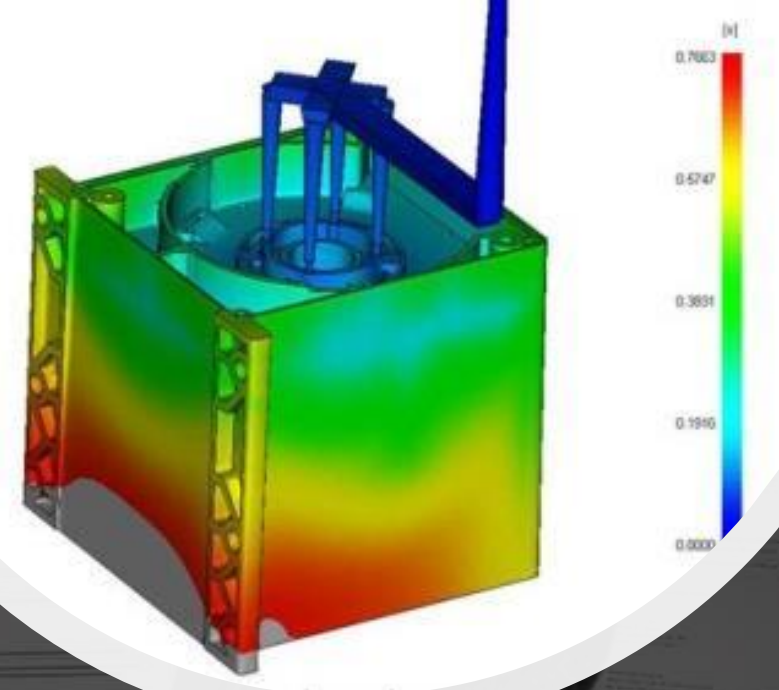
Sophisticated Tooling Solutions to Meet Virtually any Customer Need

- Decades of Tooling Expertise
- Preventative Maintenance (PM) for all Customer Tooling
- Global Tooling Partners
 - **United States (Internal/External)**
 - **Eastern Europe**
 - **Asia**
- Major Expansion of Internal Tooling in 2021
 - Accudyn Mold & Engineering (AME)



Engineering Discipline is Integral from Design through Production

- Product Development Support and Analysis
 - **SolidWorks Professional for Design**
 - **Moldflow Insight Software for Flow Simulation and Analysis**
- Metal-to-Plastic Conversion
- Program Management



Program Management at Accudyn
Employs a Systems-driven Approach
that Integrates Online Collaboration,
Timelines and AIAG/APQP Adherence

- Cross-functional Engineering Support
- **Microsoft Project Online** Utilized to Manage Projects
- Weekly Meetings on All Projects
- New Tooling Projects Managed Through Erie Engineering Group
- Close Communication with Plant Engineering Teams
 - PPAP and Production Readiness



Manufacturing & Quality

System Driven Processes



Both Accudyn Molding Facilities Offer:

- Precision Drying Equipment for Each Machine
- Hardened Screw and Barrels for Abrasive Resins
- Scientific Molding Capabilities
- Process Alarms Integrated into Key Machine Controls
- Automation / Robotics for Insert Molding and Part Removal
- Realtime Monitoring Capabilities through IQMS

Accudyn's System-driven Molding Processes Cover the Exacting Requirements Needed to Mold a Broad Range of Highly Engineered Resins

Value Added Operations

- Ultrasonic Welding
- Pad Printing / Laser Printing
- Heat-staking
- Leak Testing
- Manual & Automated Assembly
- Vision System Part Inspection
- Annealing
- Two-shot Molding
- Insert Molding



Accudyn Quality

Our Certified Quality
Systems are Integral to
our Focus on Zero-
defect Injection
Molding and Flawless
Delivery Performance



- Database Driven Quality System
- Fully Equipped Quality Labs
 - Bridge-Type Touch CMM – Carl Zeiss Contura G2
 - Multisensor DDC 4th Axis CMM – Carl Zeiss O-Inspect 543 CNC
 - Gear-pro Software – Integrated into Calypso
 - Optical Gauging – OGP Flash Measurement System (Non-Contact Visual Measurement with Programming and SPC options)
 - Melt Flow, Moisture Analysis, Leak Testing
- Level 3 PPAP for all Production Parts

Accudyn's Value

Why our customers do business with us . . .

Accudyn's Value Proposition



Family Owned / Family
Oriented Company



Customer Driven / Customer
Focused



Process Driven
Manufacturing Systems



Right Manufacturing
Footprint



Engineering Expertise
Materials - Processing -
Automation - Analysis -
Design Support



We are Competitive



We are Financially Healthy /
We are Growing



Our Team
Focused - Engaged -
Responsive - Enthusiastic

Future Outlook

Accudyn 2025

ACCUDYN 2025



BUSINESS DEVELOPMENT

Expected Growth Across Multiple Market Segments
Developing a Broader More Diverse Customer Base

TECHNOLOGY DEVELOPMENT

Adoption and Use of Industry Leading Technology
Across the Company

MANUFACTURING CAPACITY & CAPABILITIES

Focused on Improved Operational Performance, Maximizing
Capacity on Current Assets, Implementation of New
Capabilities, and Expanding our Tooling Capability

PEOPLE

Continued Encouragement of a Workforce that is
Motivated and Understands Their Contribution to
Accudyn's Success



www.accudyn.com