



adman leku

Composites & Assembly

# ABOUT US

We are a world-class, privately owned, full-service engineering and manufacturing company with 10+ years of experience in different industries.

Our facilities are located in Querétaro, México.

ADMAN LEKU is a specialized aerospace manufacturing company, certified in ISO 9001: 2015 and AS9100D by TÜV NORD.



# adman leku



# LEADERSHIP TEAM

## Guillermo Echeverría Miller, CEO and founder

With 20 years of hands-on operational experience, Guillermo has led several technology driven businesses. In 2005, Guillermo founded and led a design and engineering consultancy firm. In 2010 he co-founded VUHL Automotive and led the brand for 10 years. In 2013 he co-founded Adman Leku, as a strategic technical and production partner for VUHL and other global automotive and aerospace customers.

## David McCullough, Technical director

With three decades of aerospace experience, David has built a reputation for concise leadership in the areas of engineering and manufacturing operations. He has extensive practical experience supported by shop floor aircraft assembly through quality management to engineering and executive leaderships.

## Paul Schnaas Romay, Operations director

As a highly effective operations leader with 20+ years of experience in automotive and composites, Paul has helped accelerate the company's growth during the last 5 years. He was directly responsible for initiating Adman Leku's composites operations in Queretaro in 2015 and has led its operations ever since.

## Gustavo Guevara, Commercial director

Strategic and forward thinking, Gustavo brings strong sales experience, as well as marketing, purchasing and customer service knowledge to infuse the company with an accountability and results driven culture, along with an ambitious growth strategy.

# adman leku



# WHAT WE DO

1. Composite materials: using state of the art technology, we design, engineer and manufacture composite **parts, tools, molds, prototypes and fixtures** for structural and aesthetic applications.
1. Assemblies and sub-assemblies: we are a specialist supplier of complex assemblies for customers across different industries. We specialize on high precision, multi-part assemblies that are intensive in qualified labor.

adman leku





# COMPOSITES

Adman Leku is recognized for its innovative use of composite materials for structural and aesthetic applications.

We select the optimum materials, processes and curing cycles based on your specific needs. Selections are based on end-item requirements:

- Strength and durability needs
- Number of use cycles
- Tolerances
- Accuracy
- Surface requirements
- Cost

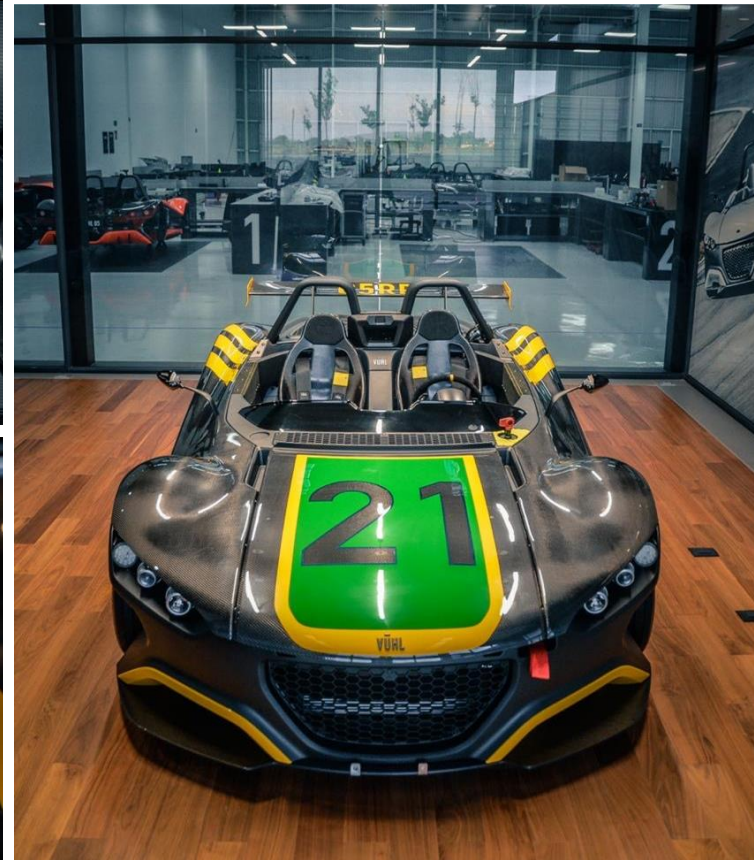
# adman leku



# COMPOSITES

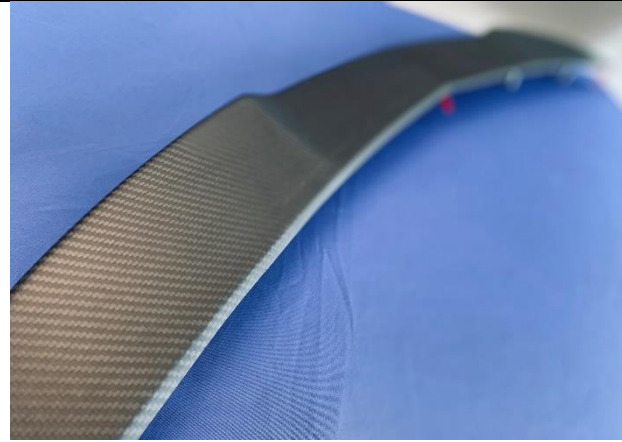


adman leku





# COMPOSITES



adman leku



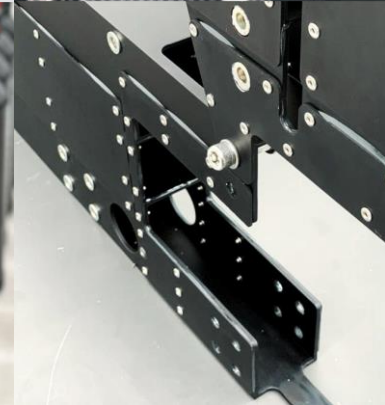
# ASSEMBLY

We do sub-assemblies and final assembly of aerospace, automotive, energy, medical and sports applications.

All assembly processes are performed according to our customers' requirements, including the use of specific geometric fixtures, visual and digital inspections, and all necessary documentation along the process.

Our expertise includes structural bonding, seal application, riveting and the use of all forms of structural and non-structural fasteners.

adman leku





# OUR STRENGTHS

- Near shoring production of composite parts and final assembly
- State of the art technology and software
- 100% in-house capacities for the design, engineering and manufacture
- Dynamic collaboration with our talented team (CT time zone)
- Low overhead and labor costs of Mexican operation
- Quick logistics to the US (delivery to US border in 1-2 days)
- Logistics support to our customers

adman leku



# OUR PROCESSES

- Tooling

- 5-axis CNC direct tooling
- 5-axis CNC master model machining
- Aluminum and Composite tooling

- Fiber processing

- CNC pattern cutting
- Dry and pre-preg lamination
- Resin vacuum infusion
- Compression moulding

- Curing

- Oven
- Autoclave

- Trimming

- 5-axis CNC machining

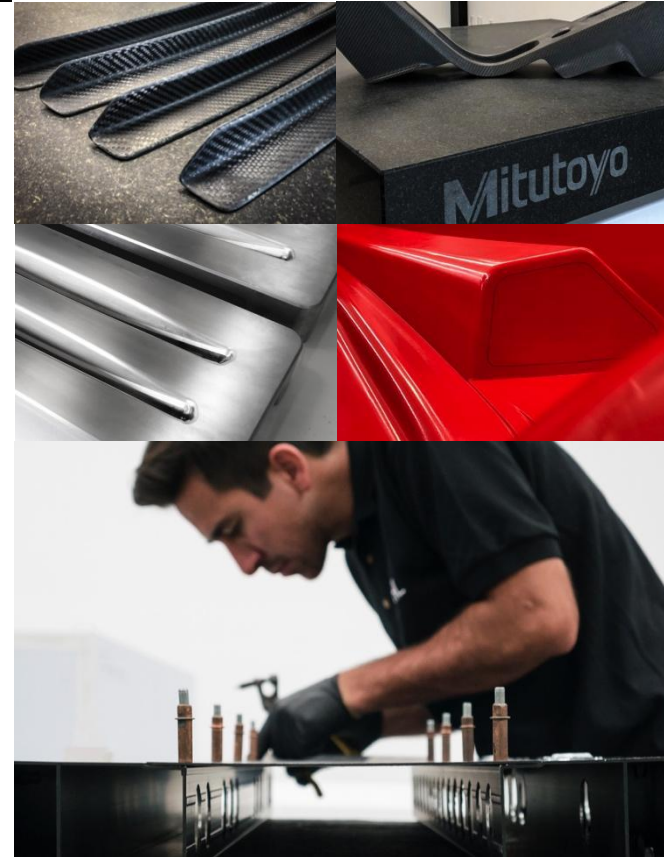
- Finish

- Temperature controlled paint shop

- Quality

- Visual inspection
- Dimensional inspection (3D scanning + dimensional report)

# adman leku



# OUR SIGNATURE PRODUCT

adman leku

VUHL Automotive is a proprietary brand of our group. VUHL Automotive designs, manufactures and sells its specialized supercars in different countries to collectors and supercar owners. Its iconic 05 model has set global records and it is considered one of the fastest road legal cars available today in the market.





# OUR CUSTOMERS

adman leku

Whether you are building an aerospace grade part or tool, a wind blade, or a lightweight vehicle, we excel at providing complex parts and tooling within a short timeframe complying with the required quality standards.

VÜHL



MAESTRO  
**DOBEL**  
TEQUILA



**Easy Aerial**   
Above & Beyond

# adman leku

Daniel Hernández

OFFICE  
Mexico +52 (419) 688-1457

EMAIL  
[dh@admanleku.com](mailto:dh@admanleku.com)

QUERÉTARO, MÉXICO

ADDRESS  
Carretera Estatal 200 km 19 + 530  
Parque Industrial Advance Queretaro, edit A,  
mod 1, 2, 3  
Ejido Navajas, CP 76260  
Querétaro

Paul Schnaas

MOBILE  
Canada +1 (604) 9969085

EMAIL  
[ps@etxe.com.mx](mailto:ps@etxe.com.mx)

VANCOUVER, CANADA