

EKK EAGLE INDUSTRY MEXICO



Company Overview.

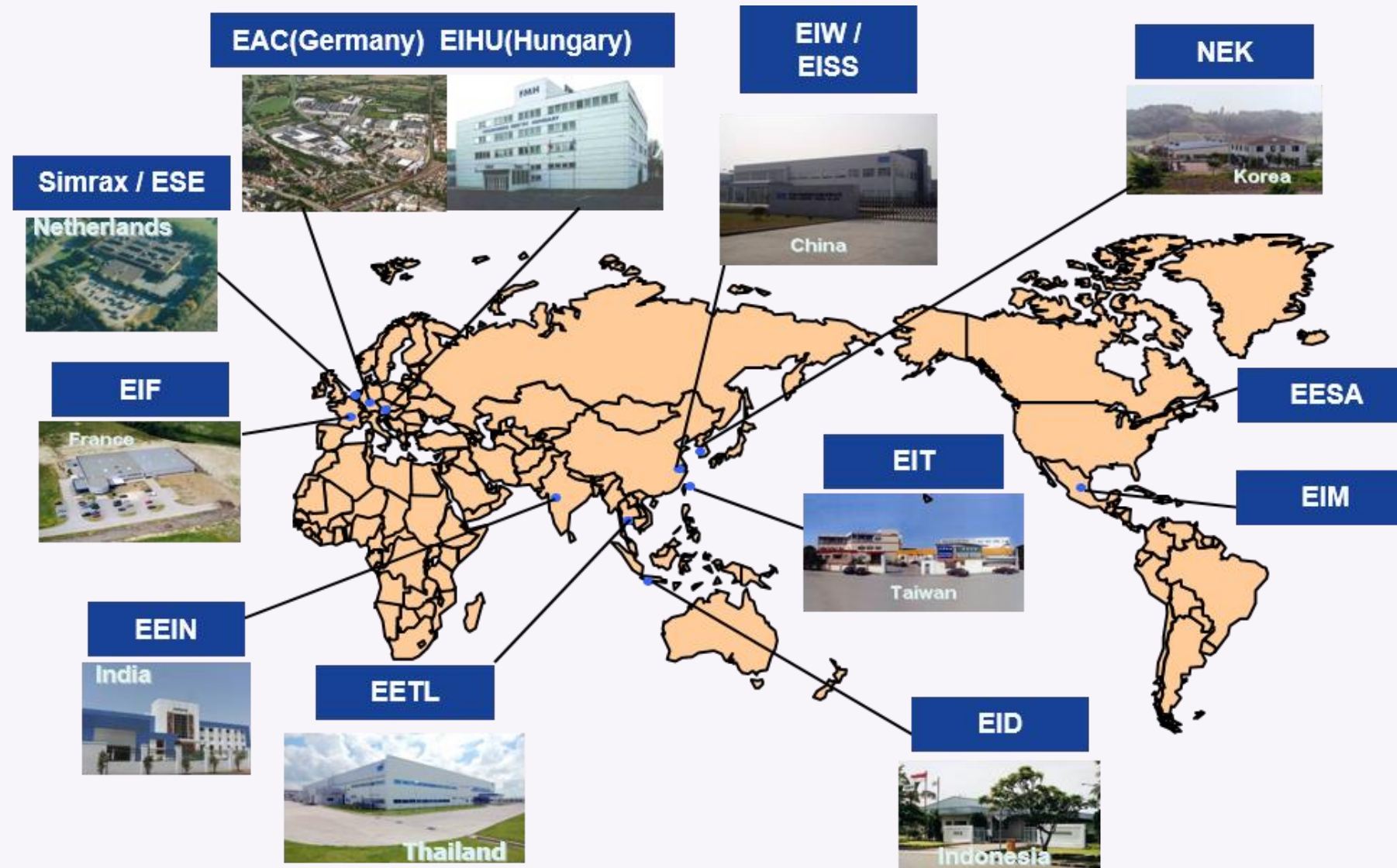
Nov 2021

PERFECTION IN MOTION

CORPORATE ENTITY DETAILS

Eagle Industry Co., Ltd. (EKK) was originally formed as the mechanical seal division of Tokyo based seal company NOK Corporation and became independent in 1964, with a continuing collaborative relationship with NOK.

A publicly traded company today on the Tokyo Stock Exchange (First Section), EKK is a \$1.4 billion USD global leader in sealing solutions and fluid management components for all major industries and customers.



Parent Corporate Profile

Company Name

Eagle Industry Co., Ltd. (EKK)

Established

October 1, 1964

Representative

Tetsuji Tsuru; Representative Director, President

Headquarters

**Shiba Park Bldg. B14F, 241 Shibakoen, Minato ku, Tokyo 105
8587, Japan**

Capital

10,490,981,500 yen

Listing

Tokyo Stock Exchange (First Section)

Securities Code

6486

*Number of
Employees*

6,400 Consolidated

Revenue

Consolidated: \$1.3 billion USD Fiscal

*Business
Description*

**Manufacturing and marketing of mechanical seals, special valves,
plant devices, marine related products, bellows devices; and related
installation work**



PERFECTION
IN MOTION



Mexico (Manufacturing) Corporate Details

Company Name

EKK Eagle Industry MEXICO S.A. de C.V. (EIM)

Established

October 1, 2012 (SOP ; June 2014)

Ownership

Eagle Industry Co., Ltd. 99%, EKK Holdings America 1%

Location

Av. Eje central 209, Logistik , Villa de Reyes, San Luis Potosi, CP79526

Capital

720 million MXN

Sales Amount

666 million MXN (2020 result)

President

Kato Takenori

Sales Manager

Adan Romo

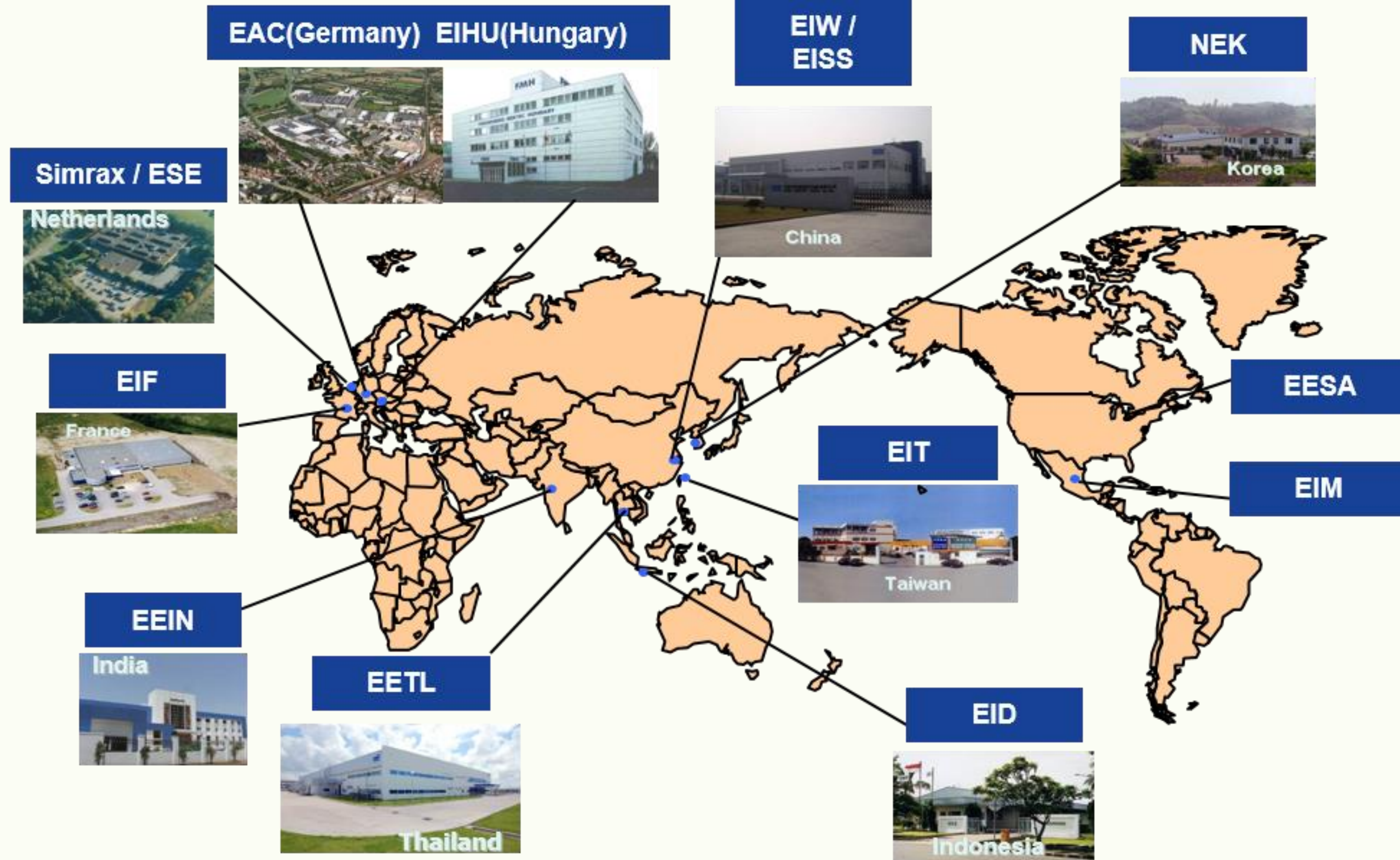
*Business
Description*

Manufacturing of solenoid valves for automotive



PERFECTION
IN MOTION





EKK Worldwide Manufacturing Presence

Product Overview by Market Segment



AUTOMOTIVE AND CONSTRUCTION INDUSTRY

- Mechanical / lip seals
- Actuators
- Control valves
- Pulsation dampers
- Floating seals



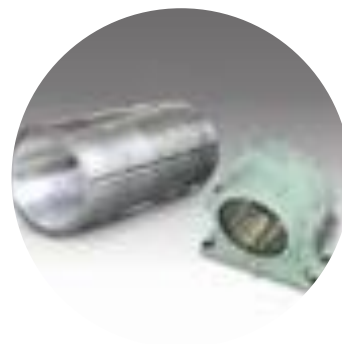
GENERAL INDUSTRY & ENERGY

- Mechanical seals
- Gas lubricated seals
- Control valves



MARINE

- Mechanical seals
- Bearings
- Accumulators
- Minilators

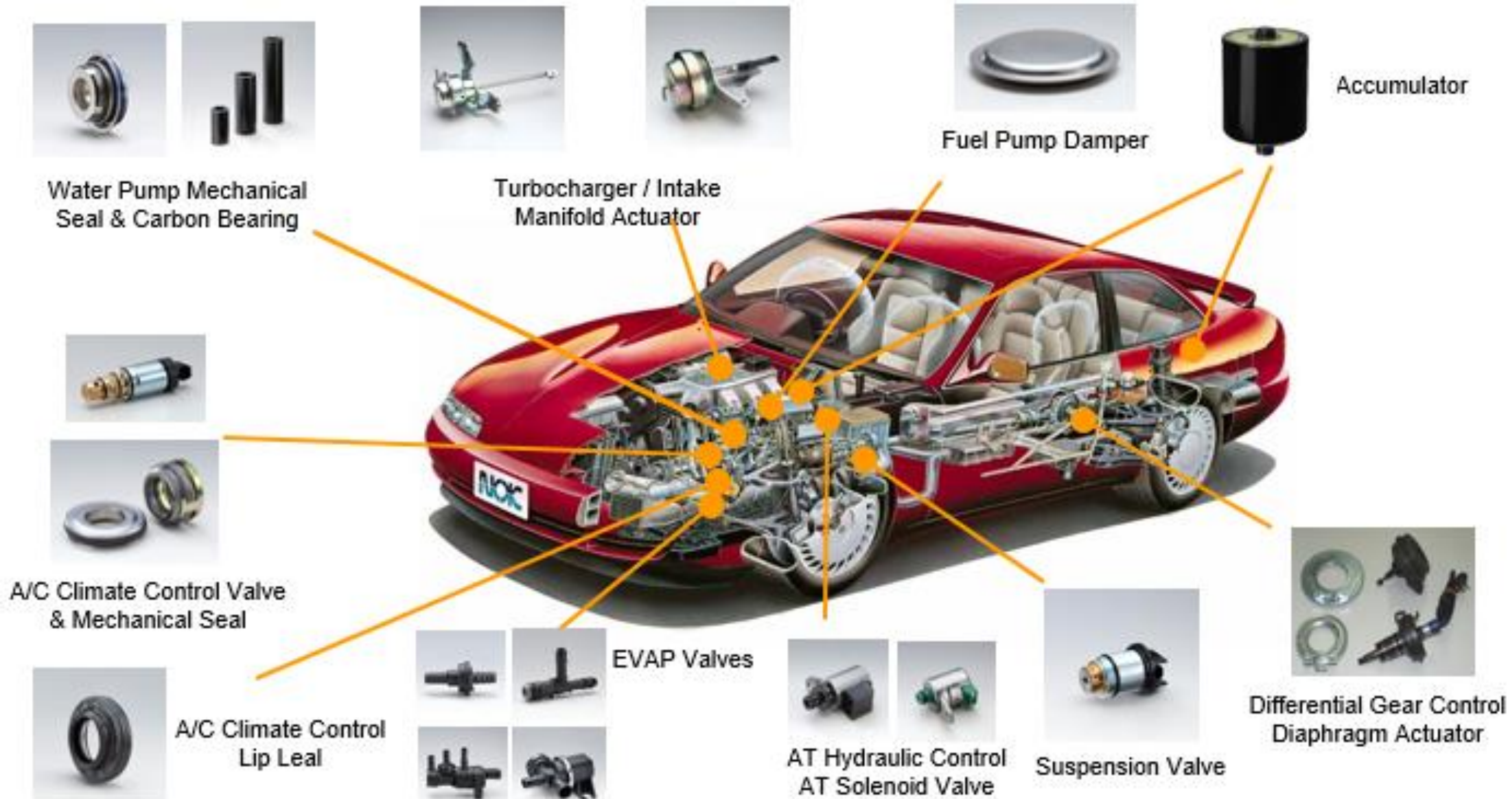


AEROSPACE

- Mechanical seals
- Metal duct bellows
- Labyrinth / brush seals
- Metal Seals



AUTOMOTIVE PRODUCT APPLICATIONS



EIM Certifications



ISO 9001 : 2015



IATF 16949:2016

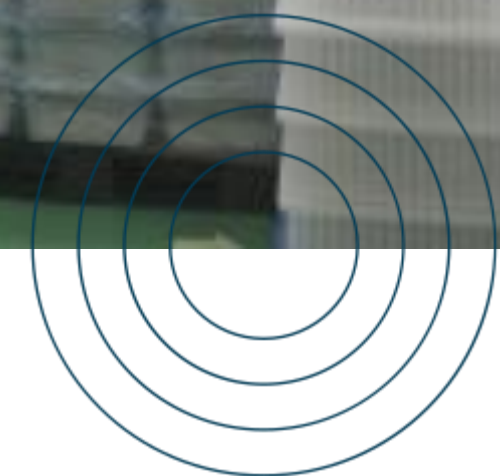


ISO 14001 : 2015

EIM Manufacturing Capabilities

ASSEMBLY





EIM Manufacturing Capabilities

ASSEMBLY

PERFECTION IN MOTION



EIM Manufacturing Capabilities

CNC



CINCOM L20X (27 MACHINES)



CINCOM A20 (27 MACHINES)



CINCOM L12 (3 MACHINES)



CINCOM GN 4200 (9 MACHINES)

EIM Manufacturing Capabilities

Grinding

INFED TYPE
(3 MACHINES)





EIM Manufacturing Capabilities

CNC

PERFECTION IN MOTION

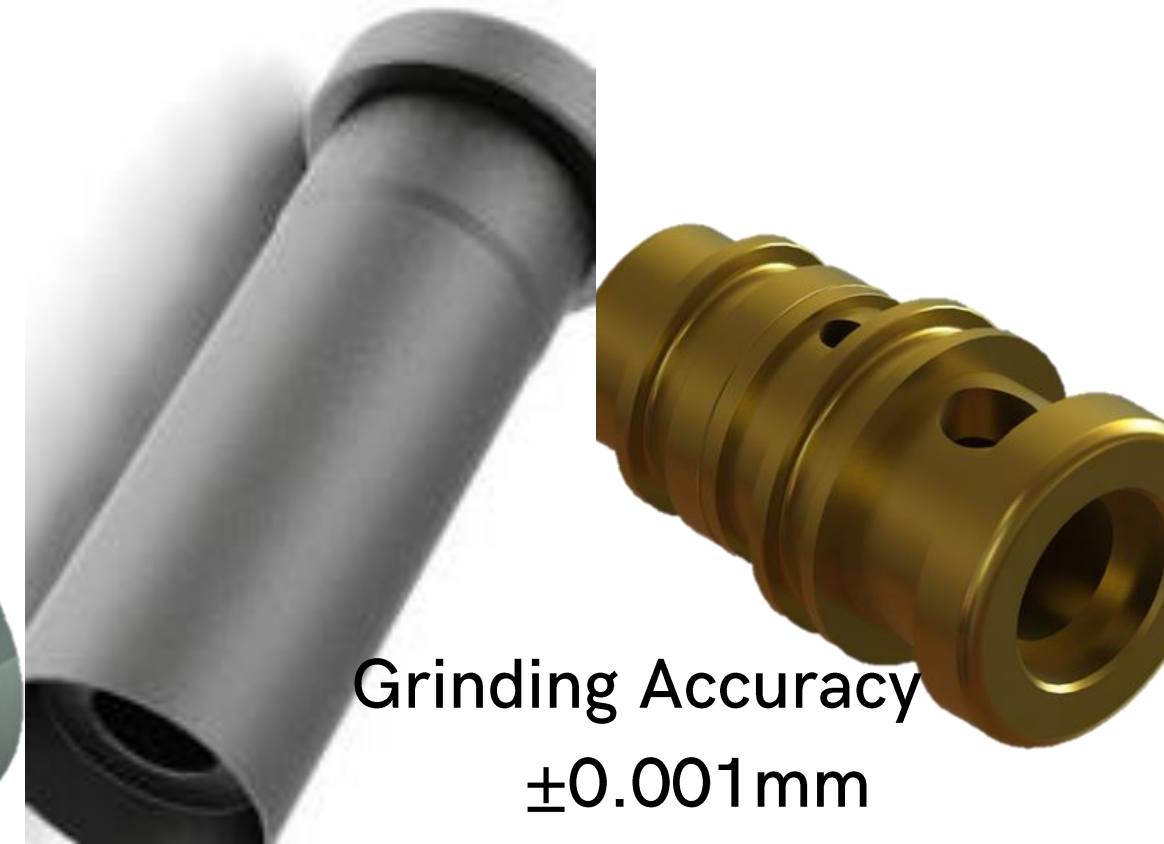


EIM Manufacturing Capabilities

Machined Components



Machining Accuracy $\pm 0.003\text{mm}$



Grinding Accuracy
 $\pm 0.001\text{mm}$



Grinding
Accuracy
 $\pm 0.001\text{mm}$



Machining Accuracy $\pm 0.003\text{mm}$



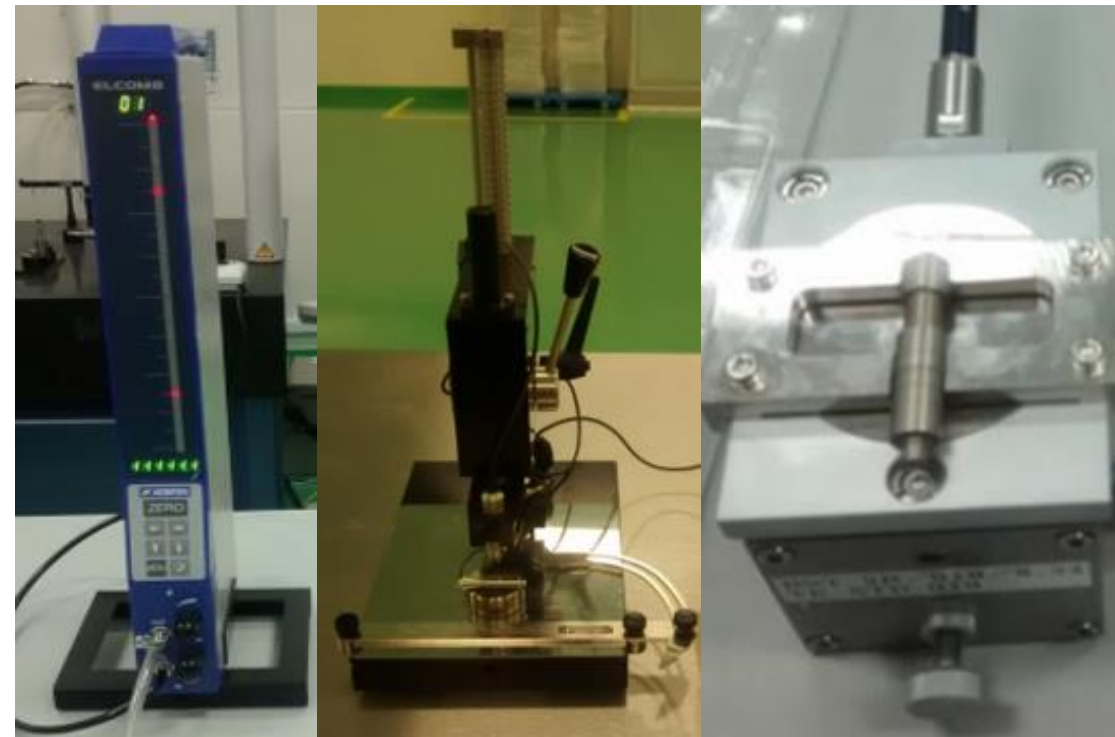
Grinding Accuracy
 $\pm 0.001\text{mm}$

EIM Manufacturing Capabilities

Components inspection



Manual / Visual



Measurement



Automatized



EIM Manufacturing Capabilities

Anodizing

Anodizing type 3 (Hard) and 2.
Semi automatized line.

PERFECTION IN MOTION





PERFECTION IN MOTION



**INNOVATING
IN
DESIGN AND
MANUFACTURING
OF
TRAYS
FOR THE INDUSTRY**



TRAYS

EKK EAGLE INDUSTRY MEXICO S.A DE C.V
PERFECTION IN MOTION





We work exclusively with the main manufacturers as well as we have too the most high quality standards with our TRAYS.

Materials:

- (PP) Polypropylene
- (PET) Polyethylene terephthalate
- (PS) Polystyrene
- (PVC) Polyvinyl Chloride
- (HIPS) High Impact Polystyrene





Our Machine

Specifications:

Max. Forming Area: 520 mm x 400 mm

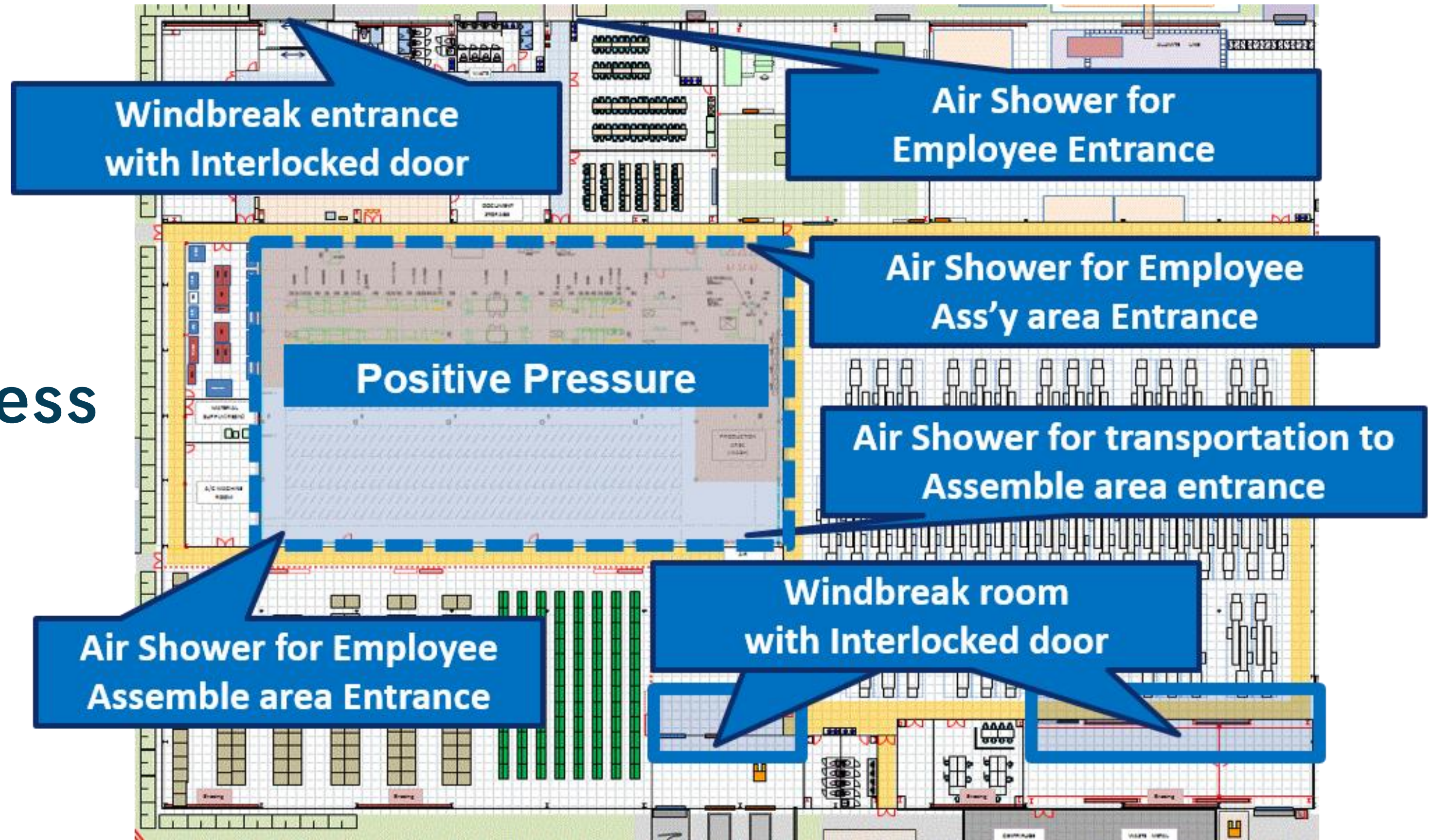
Max. Forming Depth: 100 mm

Sheet Thickness: 0.3 - 1.8 mm

Max. Sheet Width: 530 mm



EIM Cleanliness Control



EIM Cleanliness Control

Staff Air Shower



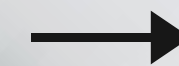
Positive Pressure



Materials Air shower



PERFECTION IN MOTION

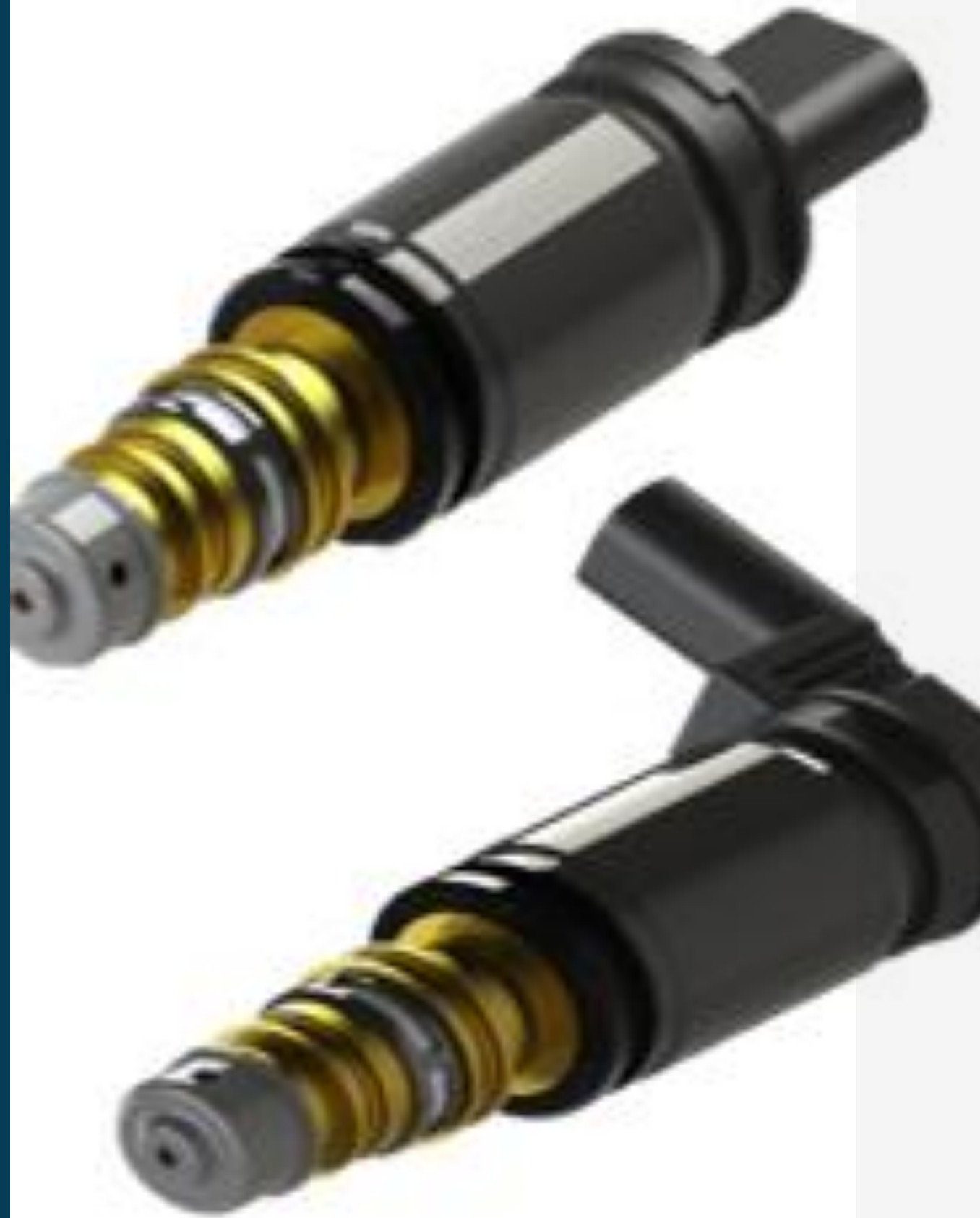


AT/CVT Solenoid

Solenoid valves for hydraulic control of automatic transmissions and continuously variable transmissions (CVT)

- Improves fuel consumption by making the transmission multi-stage or non-stage.

EIM
Produced
parts



Control Valve

Pressure control valves for
automotive air-conditioning
variable displacement
compressors

- Controls compressor pressure
and rotational load to improve
the fuel consumption.

EIM
Produced
parts

Jatco

The mission is passion.

Current
Automotive
Customers

GTACG

 **MAGI**



iTHANK YOU!

MR. ADAN ROMO
Supply Chain Manager

T. +52 444.101.3098 Ext. 460
M. +52 1 444 174 7673
adan.romo@ekkeagle.com

MR. FERNANDO SILVA
Supply Chain Specialist

T. +52 444.101.3098 Ext. 615
M. +52 1 444 130 4825
fernando.silva@ekkeagle.com