



*“Solution partner for fixing systems”*





Since 1980



## ARMA BAĞLANTI SİSTEMLERİ A.Ş.

**//** ARMA FIXING SYSTEMS, initially established as a molding workshop in 1980, is an innovative and dynamic company serving its customers in various sectors primarily automotive, home appliance and machinery with continuous focus on producing the strongest and most reliable fixing systems in a 7.000 m2 facility.

Our products include,

- DIN 3016-1 and DIN 3017-2 hose and pipe clamps,
- Cable clamps,
- Exhaust clamps and heavy duty clamps,
- Hanger clamps,
- Special spring clips for home appliance and automotive applications,
- Screw clips and U clips,
- Cage nuts and U nuts,
- Special spring washers,
- Fasteners, stamping parts,
- Plastic products,
- Metal brackets & components and own designed automatic metal forming machines.

We are the right partners in the field of fastening and fixing technology for integrated solutions from development to production. Our company produces the molds on its own premises with the help of expert staff that includes the design in CAD and to the delicate production in CNC workbenches in CAM environment. Therefore, the desired quality is achieved at lower costs in shorter periods. This benefits our customers to make sure they can get the best application with the most productivity.

ARMA FIXING SYSTEMS, currently exporting its products to primarily to Europe and various countries worldwide, continues to expand its customer portfolio through participations in national and international fairs.

We have IATF:16949 certificate which complements our quality assurance system established long years ago according to ISO 9001. Our main principle is to provide unmatched quality and timely delivery with optimum price for %100 customer satisfaction. **//**





# RETAINING CLAMPS

DIN 3016-1

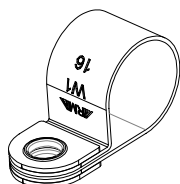


Retaining clamps known in the sector " P clips or P clamps " are manufactured according to DIN 3016 standards. These rubber lined clamps can be used for fixing hydraulic pipes, hoses and cables especially in application areas of hose and pipe clamps.

They are soundproof, resistant against friction-caused wear, heat and corrosion thanks to their rubber components. EPDM, Neoprene, Nitrile, Viton and Silicone rubber lining alternatives and without rubber types of P clamps are also available. The reinforcement sheet on the fixing hole protects the clamp from tearing especially in heavy duty applications.

DIN 3016 clamps are suitable for use in many different areas including automotive, machinery industry, railways, home appliances, air-conditioning systems, irrigation systems, engine production, ship manufacture, pump and filter systems, food industry and mining.

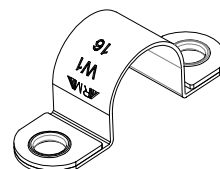
A Type



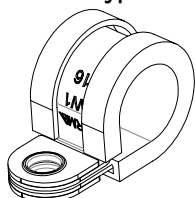
B Type



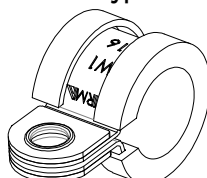
C Type



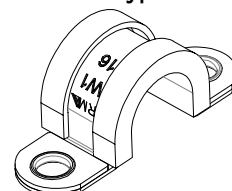
D Type



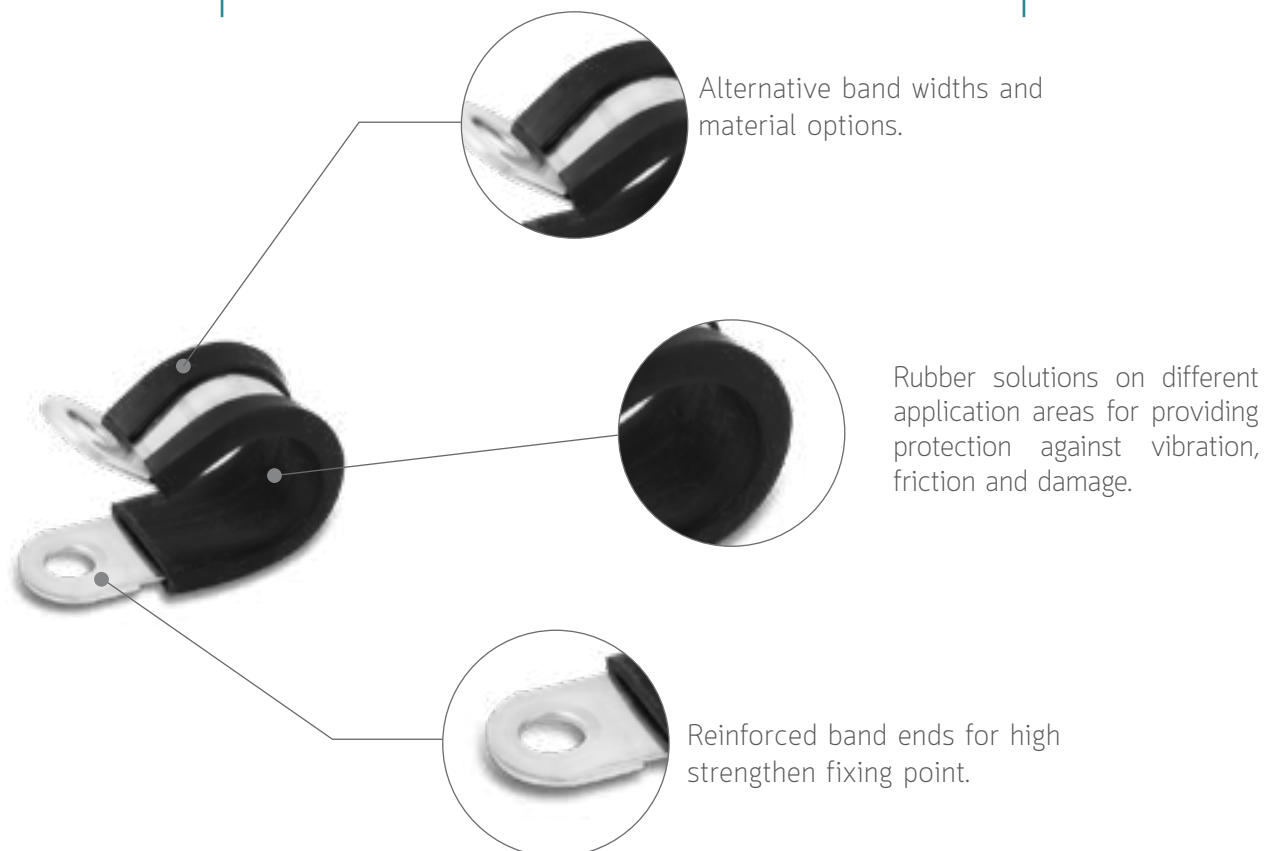
E Type



F Type



## RETAINING CLAMPS DIN 3016-1



Band Width (b) (mm)	Diameter (d) (mm)	Fixing Hole (dn) (mm)	Application Bolt
9	5-40	4,3	M4
12	5-80	5,3	M5
15	5-100	6,4	M6
20	10-130	8,4	M8
25	15-150	10,5	M10

Material Type	Material Description	Material Nr.	Salt Spray Resistance (Min. h)
W1	Galvanized Steel	1.0529	144
W3	AISI 430 Stainless Steel	1.4016	Unstable
W4	AISI 304 Stainless Steel	1.4301	240
W5	AISI 316 Stainless Steel	1.4401	400

Rubber Type	Color	Heat Resistance (°C)	Petrol Resistance	Oil Resistance	Acids & Alkalis Resistance	Weather & Ozone Resistance	Properties
EPDM	Black	-40/+120	Non Resistant	Non Resistant	Good	Very Good	Excellent UV Resistance Electrical Insulation
Neoprene	Black	-35/+100	Sufficient	Good	Good	Very Good	Excellent Wearing Resistance High Hardness Elasticity Flame Retardation
Nitrile	Black	-35/+100	Good	Very Good	Very Good	Moderate	Resistance Against Oils Elasticity
Silicone	Gray	-60/+170	Moderate	Good	Moderate	Good	Excellent Heat Resistance Excellent Insulation Excellent UV Resistance Nonflammability
Viton	Brown	-50/+300	Very Good	Very Good	Good	Good	Excellent Heat Resistance High Chemical Resistance Nonflammability

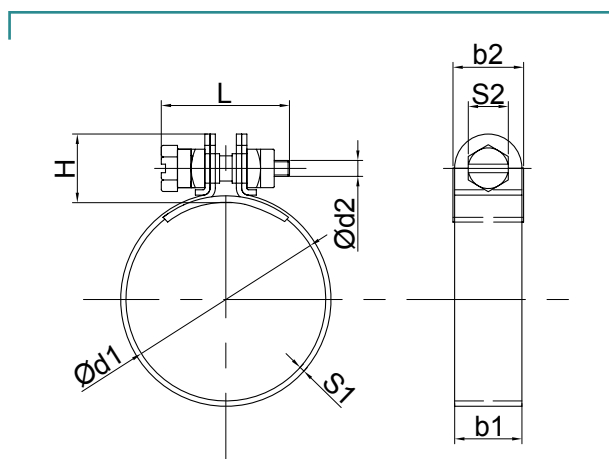


# S CLAMPS

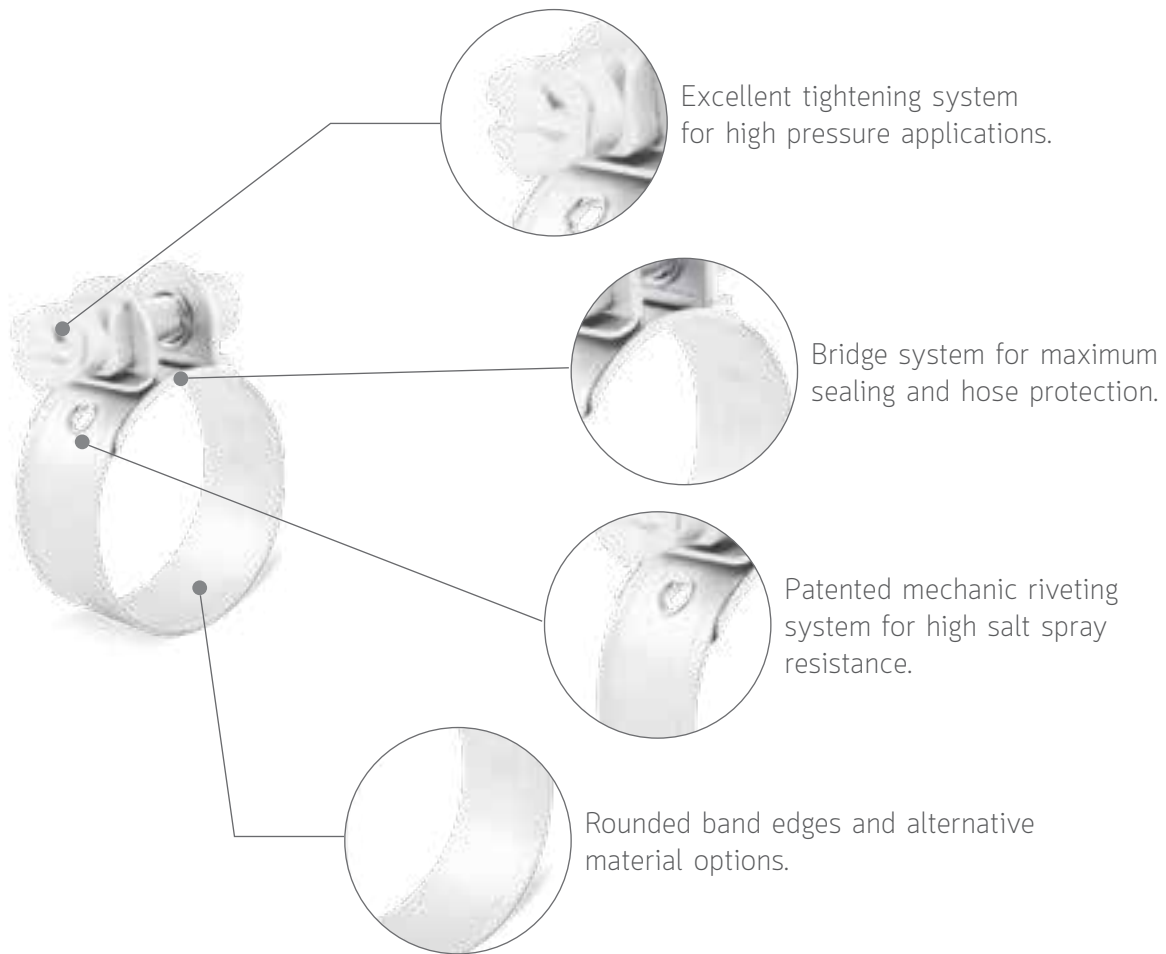
## DIN 3017-2





Produced according to the DIN 3017-2 standard, "S" clamps offer high compression power and high impermeability thanks to their special retaining bushes, nuts, and bolts. They ensure maximum protection and high-performance especially in hose applications, with the aid of an inner bridgesupport. Due to the abovementioned properties, they often replace standard worm drive clamps in high pressure hose applications.

The inner bridge support is connected to the clamp body with the special riveting method, the patent of which belongs to our company. This method improves the clamp's corrosion resistance in compare to the clamps assembled with the welding system.



## S CLAMPS DIN 3017-2



Ød1 (mm)	b1 (mm)	b2 (mm) max.	H (mm) max.	S1 (mm)	d2	L (mm) max.	S2 (mm)	Bolt Head Type
8-100	9	10,5	11	0,4	M4	31	-	
12-100	12	14	13,5	0,5	M5	35	8	
20-125	15	17	17	0,6	M6	40	10	
25-120	20	22	20	0,9	M8	46	13	

Material Type	Material Description	Nut - Bush	Bolt
W1	Galvanized Steel	SAE 1008	DIN 1.5525 / 8.8 Grade
W5	AISI 316 Stainless Steel	AISI 316 Stainless Steel	AISI 316 Stainless Steel



# RUBBER LINED CLAMPS

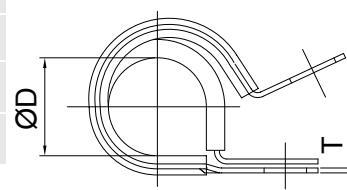
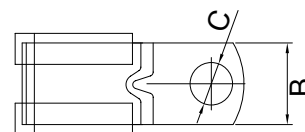
This clamp range is used mainly in automotive sector for securing cables, hoses and pipes with rubber lining provides protection against impacts and vibration.

Rubber lined clamps can be produced on the basis different designs according to customer needs with Epdm, Neoprene, Silicone and Viton rubber alternatives.

They perform precisely in different temperatures and environments according to the properties of the selected material.



Property	Options
B (Bandwidth/mm)	12,00 - 12,70 - 15,00 - 15,90 - 16,00 - 20,00
Ø D (Diameter/mm)	Ø4 - Ø110
C (Fixing Hole, suitable to)	M4 - M5 - M6 - M8 - M10
T (Material Thickness/mm)	0,50 - 0,60 - 0,80 - 1,00 - 1,20
Material Types	W1-W3-W4-W5
Rubber Types	EPDM, Neoprene, Nitrile, Silicone, Viton





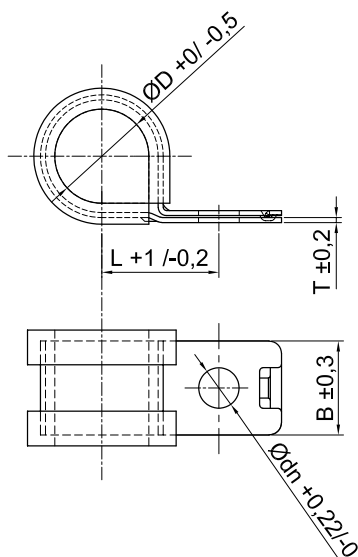
# LOCKING TYPE P CLAMPS



Preferred in the mounting applications of fluid systems in the automotive industry, locking P-clamps help positioning the clamp before mounting the main system thanks to this lock mechanism, of which we hold a patent. As a corollary, the system can be quickly mounted in the main production area and the operation time drops down significantly. Upon demand, they can be produced capable of offering the rightest solutions by different rubber alternatives.

Bandwidth (B) (mm)	Diameter (D) (mm)	Fixing Hole (dn) (mm)	Axis Distance (L) (mm)		Band Thickness (T) (mm)
			Straight Rubber	Grooved Rubber	
15	10 - 50	6,4	D/2 +11,2	D/2 +14,7	0,80
20	16 - 45	8,4	D/2 +14,5	D/2 +18	1,00

Material Type	Material Description	Material Nr.	Salt Spray Resistance (Min. h)
W1	S350 Z275 Galvanized Steel	1.0529	144
W3	AISI 430 Stainless Steel	1.4016	Unstable
W4	AISI 304 Stainless Steel	1.4301	240
W5	AISI 316 Stainless Steel	1.4401	400
Rubber Types	EPDM - Neoprene - Nitrile - Silicone - Viton <div style="display: flex; justify-content: space-around; align-items: center;">   </div> <div style="display: flex; justify-content: space-around; align-items: center;"> <span>Straight</span> <span>Grooved</span> </div>		



# EXHAUST CLAMPS

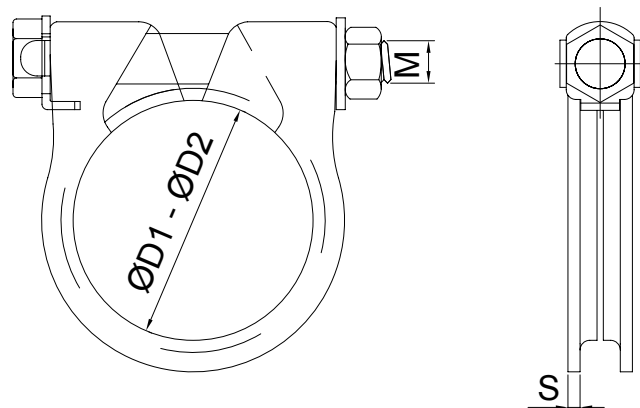
Our exhaust clamps are used especially in automotive sector for clamping exhaust pipes and silencers that are subject to extreme thermal fluctuations.

They are manufactured from galvanized steel. Special design washer prevents rotation of bolt around itself and provides easy application.

Rounded band edges prevent hose deformation and protects against injury. Single piece clamp production provides uniform contact pressure on the pipe circumference and high efficiency with regard to system tightness.



Diameter D1-D2 (mm)	Bolt M (mm)	Material Thickness S (mm)	Material Type
27 - 30	M8	1,5	Hot Dipped Galvanized Steel 1.0529
33 - 36	M8	1,5	
33 - 36	M8	2	
39 - 42	M8	2	
47,5 - 50	M8	2	
52 - 54,10	M8	2	
57 - 59,10	M8	2	
40,5 - 43,5	M8	2,5	
42 - 45	M8	2,5	
45 - 48	M8	2,5	
48 - 51	M8	2,5	
49 - 52	M8	2,5	
53 - 56	M8	2,5	
55 - 58	M8	2,5	
58 - 61	M8	2,5	
61 - 64	M8	2,5	
68 - 71	M10	3	
71 - 74	M10	3	



# WORM DRIVE HOSE CLAMPS

## DIN 3017-1

Our worm drive clamps have excellent performance while being at the same time very compact thanks to the exclusive design of housing. As different from its competitors, the cold formed stamped band thread, smoothed on the underside, combined with the rounded band edges protects the hose from any damage.

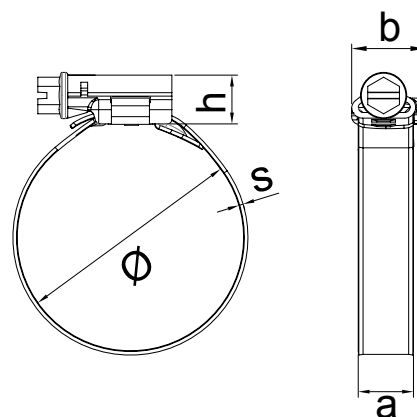
It fully complies with the norm of DIN 3017-1 and RoHs directives. Those clamps can be comfortably used in automotive, petrochemistry, maritime and food sectors due to its extraordinary resistance against corrosion ensured by stainless steel types.



a (mm)	Ø (mm)	s (mm) +0,1	h (mm) max.	b (mm) max.	Max. Torque (Nm)	
					W1-W2 W3	W4-W5
7	8-12	0,65	8,4	10,9	1,5 (except W3-W5 )	
9	8-16		10,5	14	3	
	12-22				3,5	
	16-27				4	
	20-32					
	25-40					
	30-45					
	140-160	0,75				

a (mm)	Ø (mm)	s (mm) +0,1	h (mm) max.	b (mm) max.	Max. Torque (Nm)	
					W1-W2-W3	W4-W5
12	16-27	0,8	11	18,8	4,2	4,6
	20-32				5,2	5,6
	25-40					
	30-45					
	32-50				6	6,5
	40-60					
	50-70					
	220-240				6,8	7,0

Material	Properties
W1	Screw: Zinc Plated Low Carbon Steel Band and Housing: Galvanized Steel
W2	Screw: Zinc Plated Low Carbon Steel Band and Housing: AISI 430 Stainless Steel
W3	Screw: AISI 430 Stainless Steel Band and Housing: AISI 430 Stainless Steel
W4	Screw: AISI 304 Stainless Steel Band and Housing: AISI 304 Stainless Steel
W5	Screw: AISI 316 Stainless Steel Band and Housing: AISI 316 Stainless Steel



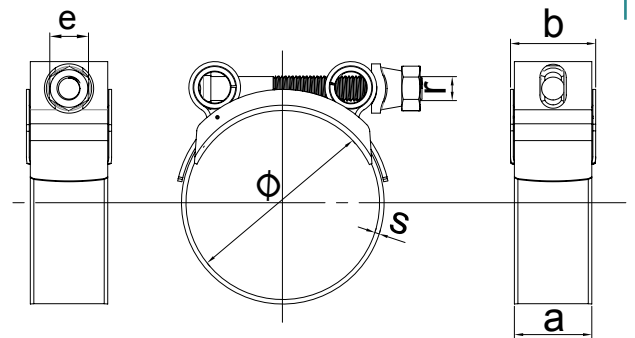
# SUPER HEAVY DUTY CLAMPS

Featuring high strength 8.8 grade steel nut and T bolt, our heavy duty clamps can be tightened up hard using many different kinds of tools, while the rounded band edges protect the hose from harm.

They are widely used in agriculture, waste water lines, mining and quarrying along with sectors in need of the use of heavy-duty clamps. Those clamps are high-performance products, offering both strength and competitive prices.



Ø (mm)	a (mm)	s (mm)	b (mm)	r	e (mm)	Max. Torque (Nm)
17-19	18 +0,2	0,6	19,8	M5	8	4,5
20-22						
23-25						
26-28						
29-31	20+0,3	0,8	22	M6	10	8
32-35						
36-39						
40-43						
44-47	22+0,2	1,2	24,5	M7	11	16
.....						
64-67						
68-73						
74-79	24+0,4	1,5	26,5	M8	13	25
80-85						
86-91						
.....						
122-130	24+0,4	1,5	26,5	M8	13	25
131-139						
.....						
240-252						
.....	26+0,5	1,7	29	M10	17	50
.....						
.....						
.....						



Material	Properties
W1	Bolt: Zinc Plated 8.8 Grade Steel Band and Bridge: Zinc Plated Low Carbon Steel Washer and Trunnion: Zinc Plated Low Carbon Steel



# SUPRA

## HEAVY DUTY CLAMPS

Due to its revolutionary swiveling bridge, Supra Heavy Duty Clamps can be mounted in the most difficult applications without having to remove the hose.

Rounded band edges protect the hose from damage. The high strength bolt together with captive nut and spacer system allow you to clamp the most demanding of hose assemblies.

Our Supra Clamp is the choice of professionals in all industrial applications including industry hose, automotive and agricultural machinery.



Ø (mm)	a (mm)	r	Max.Torque (Nm)		
			W2	W4	W5
17-19	18 +0,2	M6	10		
.....					
27-29					
29-31	20 +0,3	M7	13		12
.....					
43-47			16		
.....					
63-68					
68-73	25 +0,4	M8	30		
.....					
121-130					
130-140	28 +0,4	M10	45		
.....					
395-408					

### Material:

**W2:** Band and Bridge: AISI 430 Stainless Steel

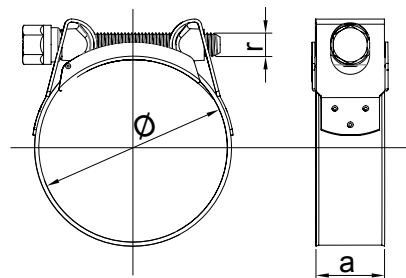
Bolt: Zinc Plated Low Carbon Steel

**W4:** Band and Bridge: AISI 304 Stainless Steel

Bolt: AISI 302 Stainless Steel

**W5:** Band and Bridge: AISI 316 Stainless Steel

Bolt: AISI 316 Stainless Steel



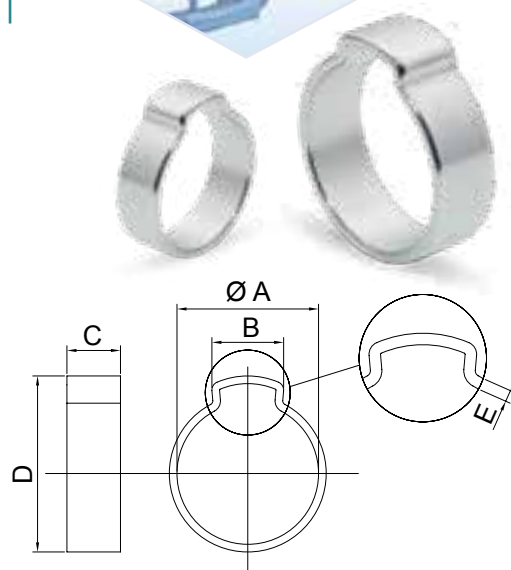
# ONE EAR CLAMPS

One ear clamp is an economical and fast applicable solution for most simple hose assemblies. Thanks to its convenient design, it is resistant to external factors such as impact, friction after assembly. The rounded band edges avoid any damage to the hose. One ear clamps are easy, fast and safe to mount.



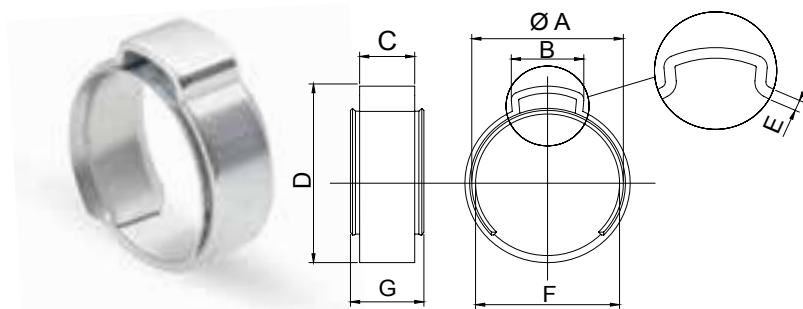
	Ø	A	B	C	D	E
W1	7-9	9,3	5,5	6	13	0,8
	8-10	10,3	6		14	
	9-11	11,3	6,5		15	
	10-12	12,3	7	6,5	16	
	11-13	13,3	7,5		17	0,9
	12-14	14,3	8		18,5	1
	14-16	16,3	8,5	7	20,5	1,1
	16-18	18,5	9,5		23	

	Ø	A	B	C	D	E
W4	7-9	9,3	5,5	6	13	0,8
	8-10	10,3	6		14	
	9-11	11,3	6,5	6,5	15	
	10-12	12,3	7		16	
	11-13	13,3	7,5		17	
	12-14	14,3	8	7	18,5	
	13-15	15,3			19,5	
	14-16	16,3	8,5		20,5	
	15-17	17,5	9		22	1
	16-18	18,5			23	
	17-19	19,5	9,5	7,5	24	
	18-20	20,5	10		25	



## ONE EAR CLAMPS WITH INNER RING

This clamp eliminates the deformation that may occur during the compression process and ensures the equal distribution of pressure around the hose thanks to the specially designed inner ring. It provides superior performance with its sealing, safety and fast applicability features by ensuring equal distribution of the applied tightening pressure around the hose.



W1	Band: Zinc Plated St 34 Steel
	Inner Ring: AISI 301 Stainless Steel
W4	Band: AISI 304 Stainless Steel
	Inner Ring: AISI 301 Stainless Steel

	Ø	A	B	C	D	E	F	G
W1	7,5-8,5	9,3	5,5	6	13	0,8	8,5	
	8-9,5	10,3	6		14		9,5	
	9-10,5	11,3	6,5	6,5	15		10,5	7,8
	10-11,5	12,3	7		16		11,5	
	10,5-12,5	13,3	7,5		17	0,9	12,5	
	11,5-13,3	14,3	8		18,5	1	13,3	
	13-15,3	16,3	8,5	7	20,5	1,1	15,3	8,8
	15-17,3	18,5	9,5		23		17,3	
W4	7,5-8,5	9,3	5,5	6	13	0,8	8,5	
	8,2-9,5	10,3	6	6	14	0,8	9,5	
	9-10,5	11,3	6,5	6,5	15	0,8	10,5	7,8
	10-11,5	12,3	7	6,5	16	0,8	11,5	
	10,5-12,5	13,3	7,5	6,5	17	0,8	12,5	
	11,5-13,5	14,3	8	7	18,5	1	13,5	
	12,5-14,5	15,3	8	7	19,5	1	14,5	8,8
	13-15,3	16,3	8,5	7	20,5	1	15,3	
	14-16,3	17,5	9	7	22	1	16,3	
	15-17,3	18,5	9,5	7	23	1	17,3	
	16-18,3	19,5	9,5	7,5	24	1	18,3	9,8
	17-19,3	20,5	10	7,5	25	1	19,3	9,8

# TWO EAR CLAMPS

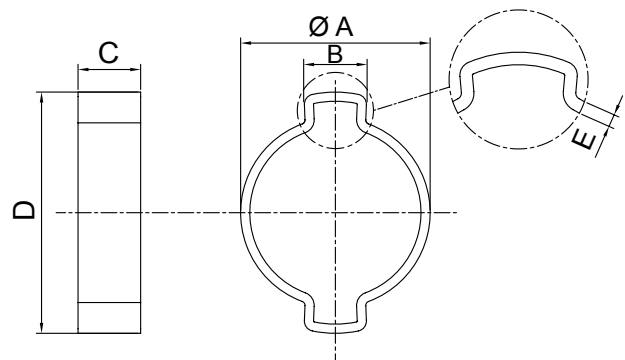
Two ear clamps are fast, economical and high-performance solution for many simple hose assemblies, used with air or other fluids.

The two ears provide extra grip and help to maintain constant pressure around the hose. Its rounded band edges prevent damage to the hose.



	Ø	A	B	C	D	E
W1	5-7	7,3	4,3	6	11	0,6
	7-9	9,3	4,8		13,5	0,8
	9-11	11,3	5,3	6,5	17	
	10-12	12,3	5,5		18	
	11-13	13,3	5,8		19	
	13-15	15,3	6,3	7	21,5	
	14-17	17,5	6,6		24	0,9
	15-18	18,5	7	7,5	25	1
	17-20	20,5	7,6		27	1,1
	19-21	21,5	7,9	8	28	
	20-23	23,5	8,5		31	
	22-25	25,5	9,1	8,5	33	
	23-27	27,5	9,4		35	
	25-28	28,5	10	9	36	1,3
	28-31	31,5	10,6		39	
	31-34	34,5	11	9,5	42	
	34-37	37,5	11,5		46	
	37-40	40,5	12	10	49	1,5
	40-43	43,5	12,5		53	
	43-46	46,5	13	10,5	56	

	Ø	A	B	C	D	E
W4	5-7	9,3	4,8	6	14,5	0,8
	7-9	11,3	5,3	6,5	16,5	
	9-11	13,3	5,8		19	1
	10-12	15,3	6,3	7	21,5	
	11-13	17,5	6,6		24	
	13-15	18,5	7	7,5	25	
	14-17	20,5	7,6		27	1,2
	15-18	21,5	7,9	8	28,5	
	17-20	23,5	8,5		30,5	
	18-21	25,5	9,1	8,5	33,5	



# METAL CLIPS

Metal clips are designed by our expert R&D staff according to the needs of our customers and produced in our wide machinery park.

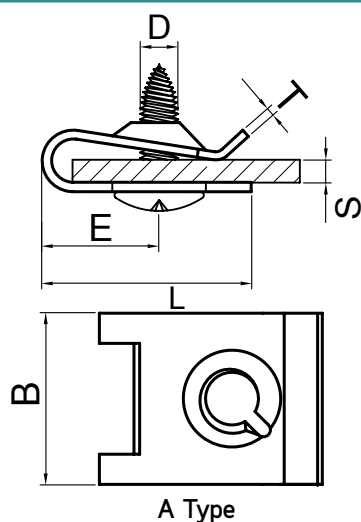
They are full-performance fixing elements used for design in many sectors such as automotive, home appliances, electric, electronic, lighting and air-conditioning.



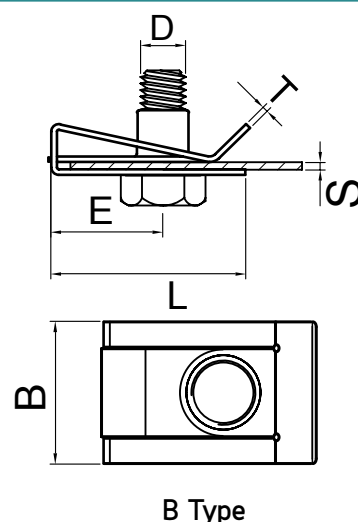


# METAL CLIPS

A wide variety of clips fully compatible with metric bolts and screws are manufactured. They can be used for different applications for fixing purpose. Thanks to our automatic metal forming machines, our metal clips are produced in series at low mold costs. Those products can be produced in standard dimensions as well as according to our customer's designs.



A Type



B Type

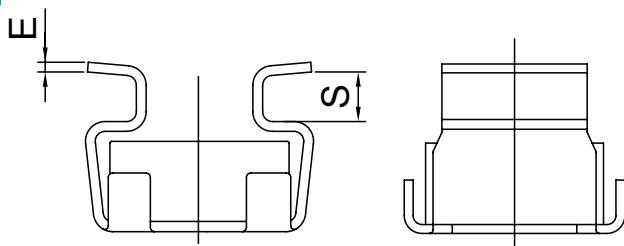
Description	Part Nr.	Type	D	E (mm)	L (mm)	B (mm)	T (mm)	S (mm)	Material	Photo
3,5 Screw Clip	21-01-001	A	Ø3,5	11	17,6	12	0,6	0,5 ~ 2	Ck 67	
3,9 Screw Clip	21-01-002	A	Ø3,9	11	17,6	12	0,6	0,5 ~ 2	Ck 67	
4,2 Screw Clip	21-01-011	A	Ø4,2	11,6	20,8	12	0,6	0,5 ~ 2	Ck 67	
4,2 Screw Clip	21-01-044	A	Ø4,2	8,7	15,2	12	0,7	0,5 ~ 2	Ck 67	
4,8 Screw Clip	21-01-006	A	Ø4,8	8,7	15,2	12	0,7	2 ~ 3,5	Ck 67	
4,8 Screw Clip	21-01-009	A	Ø4,8	11,5	20,6	14	0,6	0,5 ~ 2	Ck 67	
M4 Spring Clip	21-02-009	B	M4	5,8	15,3	10	0,6	0,5 ~ 1,5	Ck 50	
M5 Spring Clip	21-02-002	B	M5	11,5	20,5	14,3	0,6	0,5 ~ 3	Ck 50	
M6 Spring Clip	21-02-005	B	M6	12,5	23,2	16	0,8	0,5 ~ 2	Ck 50	
M8 Spring Clip	21-02-014	B	M8	14,5	24,3	16,6	1	2 ~ 3	Ck 50	

Note : Different coating options are available upon request.

# CAGE NUTS

Cage nuts are a classic fixing element for panel mounting. They can be mounted to the application area on the panel without needing any additional apparatus. They provide a safe combination, meeting significant torque values.

The use of a cage nut in the panel mounting allows you to save time, reduces cost in expensive operations such as tapping, welding, riveting and ensures a safe fixing with its strong nut structure. It's preferred on panel, cabinet and clipboard applications, in many sectors including automotive, home appliances, electric, electronic, lighting and air-conditioning.



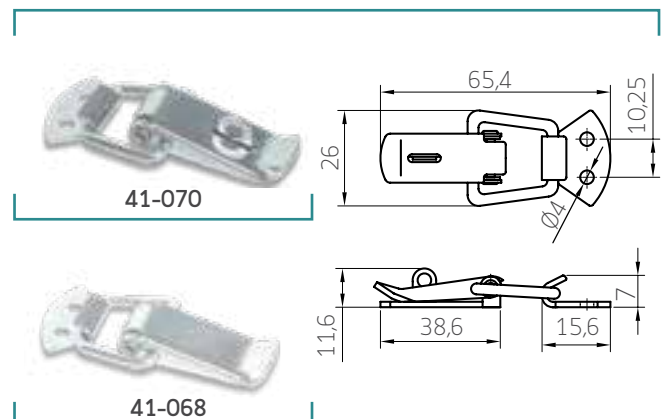
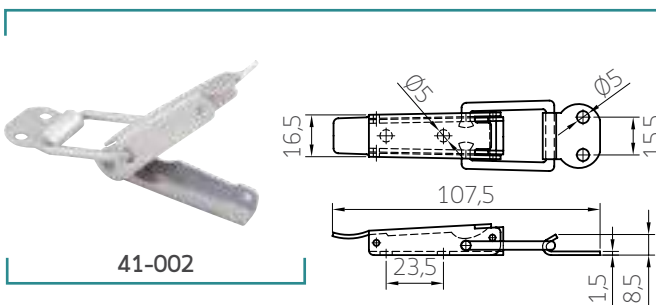
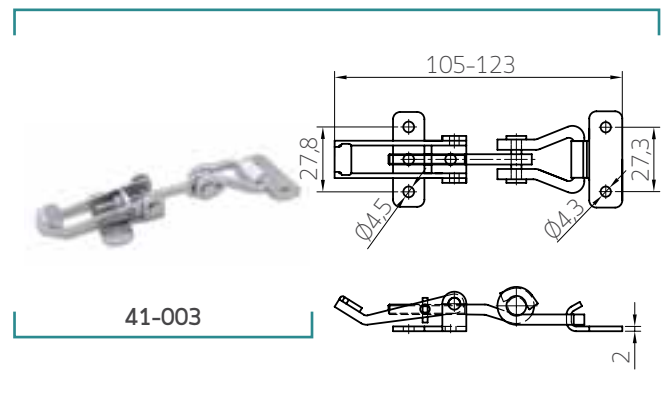
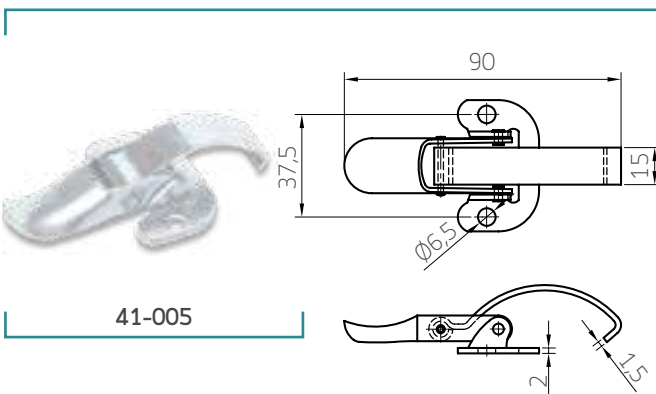
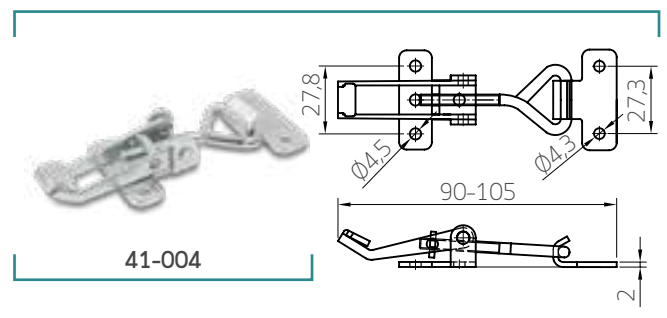
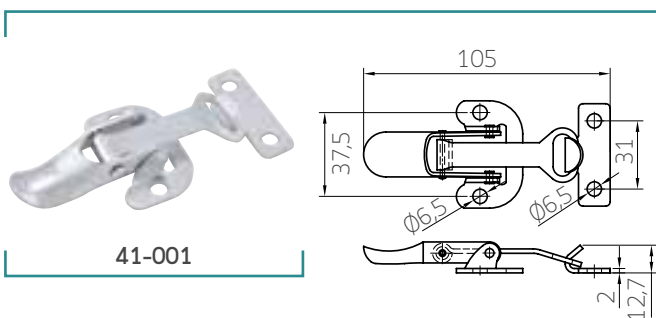
Part Nr.	Dim.	Panel Thickness S (mm)	Nut Dimensions (mm)	Material Thickness E (mm)	Assembly Hole (mm)
304-01-001	M4	1-1,7	2,8x7,8x7,8	0,30	5,3x5,3
306-01-008	M6	1,7-2,5	4,5x10x10	0,45	8,3x8,3
306-01-009	M6	2,6-3,5	4,5x10x10	0,45	8,3x8,3
306-01-011	M6	1,7-2,5	4,5x11x11	0,40	9x9
305-01-004	M5	1,2-1,6	4,5x11x11	0,40	9,5x9,5
305-01-005	M5	1,7-2,5	4,5x11x11	0,40	9,5x9,5
306-01-005	M6	1,2-1,6	4,5x11x11	0,40	9,5x9,5
306-01-006	M6	1,7-2,5	4,5x11x11	0,40	9,5x9,5
308-01-007	M8	1,7-2,5	5,4x13,8x13,8	0,50	12,3x12,3
308-01-003	M8	1,8-3,2	5,4x13,8x13,8	0,50	12,3x12,3
308-01-005	M8	3,3-4,7	5,4x13,8x13,8	0,5	12,3x12,3
312-01-001	M12	1,8-3,2	8x17x17	0,60	14x14

**Material:** Cage: Ck 50 or AISI 301 Stainless Steel  
Nut: SAE 1010 or A2 Stainless Steel

**Finishing:** Zinc Plated with Cr+3 Passivation

# DRAW LATCHES

Draw latches we produce have high material and workmanship quality. They are used in many different sectors requiring locking mechanism such as machinery, beekeeping, marine, electric and automotive.



# METAL BRACKETS & COMPONENTS

Our metal brackets and components are manufactured according to the customer requirements. Those products are especially used on the leading commercial vehicles in automotive sector. The sheet metal operations of cutting, cold forming, bending, spot welding, MIG/MAG welding are all available in production line of ARMA FIXING SYSTEMS. We can easily meet special demands of our customers by our cost-effective designs and well-equipped machinery park.





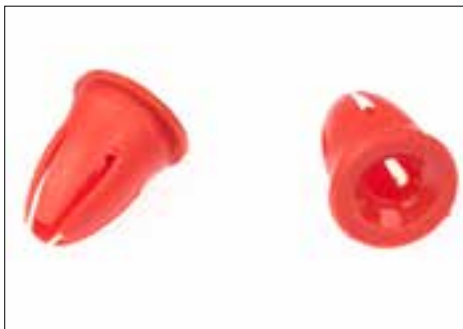
# PLASTIC PRODUCTS

Plastic products can be produced in accordance varying standards and the special requests of our customers.



# PLASTIC PRODUCTS

Our plastic products are especially used in automotive applications where various parts are fixed to the body of vehicle.







## ARMA BAĞLANTI SİSTEMLERİ SANAYİ VE TİCARET A.Ş.

**Factory :** Ömerli Mah. Adnan Kahveci Cad.  
No: 34/1 34555 - Hadımköy / Arnavutköy  
İstanbul - TÜRKİYE

**Bursa Office :** Fethiye Mah. Fatih Sk.  
Akdeniz Plaza No: 21 K: 4 D: 1  
Nilüfer / Bursa - TÜRKİYE

+90 212 549 57 31 - 32  
+90 212 798 34 07 - 08  
+90 212 549 57 33  
info@armafixing.com

+90 224 243 03 30  
+90 224 243 03 40

[www.armafixing.com](http://www.armafixing.com)  
[www.clampscissors.com](http://www.clampscissors.com)

