





Business Model

Who we are:

North Seven Industrial, is company based in Brownsville, Texas that provides Supply Chain Solutions in Manufacturing, Planning & Procurement, Inventory Management & Logistics.

Our manufacturing sites are certified in ISO9001:15, IATF16949:16 and AS9100:16.

Our focus is on product manufacturing development in multiple commodities like screw machining, stamping, die casting and cable assemblies with rapid production scalability and integrated warehousing and logistics using customer specific Vendor Manage Inventory requirements that provides a full Supply Chain Solution to our customers.





Commodities and Services

- Swiss Screw Machined Parts - Turned Parts
- CNC Multiple Axis Parts
- Wire Harnesses & Cable Assemblies
- Castings Molding Tools & Parts (Raw, Machined & Finish)
- Plastic Molding Tools & Parts (Thermoset & Thermoplastic)
- Stamping Tools & Parts (Progressive & Multi-Stage)
- Screws & Fasteners
- MRO Services





Business Segments



Automotive

We offer industry-specific requirements, IATF16949:2016, and just-in-time delivery, to all our clients in the automotive industry. Our precision screw machined parts and stampings are available in various raw material types and finishes.



Aerospace

Our team has years of experience in the aerospace field that requires a vast array of industry-specific requirements. All our manufacturing locations are AS9100D certified in machining and forging in various finishes and inspection requirements.



Electronics

We produce electronics industry-specific screw machined parts and stampings in multiple raw materials and finishes. All our manufacturing sites are ISO 9001:2015, APQP, SPC, IPQC, and AQL certified.



Industrial

We supply high-quality precision components to manufacturing facilities and assembly lines across the world. Leaders in the industrial world use our components to manufacture engines, gearboxes, vehicle bodies, and more.





Engineering & Quality

NORTH SEVEN INDUSTRIAL Product and tooling development follows PPAP's process for customers product & tooling qualifications that includes but not limited to:

- First Article Inspection Reports
- Manufacturing Process Flow Chart
 - Quality Control Plan
- Process Failure Mode and Effect Analysis
 - Process Capability Studies
 - Raw Material Certification
 - Plating Certification
- Heat Treatment Certification
- Production Lot Traceability

* We also comply with industry specific testing or requirements.





Screw Machining- Turned Parts & Multiple Axis Machining





Production & Capacity

- Japanese & USA CNC technology & Swiss type machining
- O.D. range(for bar feeder): 1.5 mm ~ 52.0mm
- Parts Tolerance: ± 0.005 mm
- CNC Machining Range: O.D. $\varnothing 10$ mm - O.D. $\varnothing 127$ mm

- Materials:
 - Steel: 12L14, 1215, 1144, 8620, SCM415, SCM440 etc.
 - Stainless Steel: SUS303, SUS304, SUS316, SUS416, SUS420J2, SUS430F
 - Aluminum Alloy: 2011-T3, 6061-T6, 6063-T6, 7075-T6
 - Brass, Copper, Bronze, C36000、C1100B、C5441B、C6802B

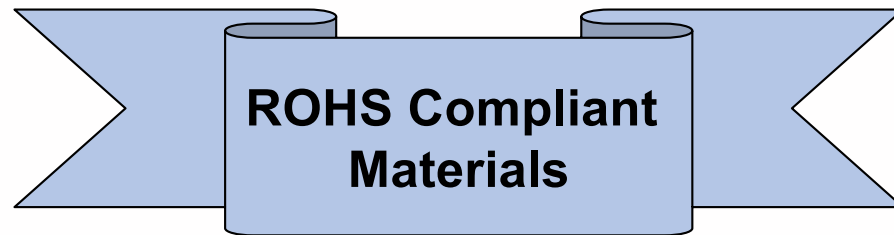
Remark: Material type diversification shown above is commonly used for your reference, we can review and accommodate any special material request that falls within our manufacturing capabilities.





Production & Capacity

- Finishes Selection:
 - Heat treatment
 - Sand blasting
 - Grinding
 - Polishing
 - Anodizing
 - Hard Anodizing
 - Plating (Zinc, Nickel..)
 - Passivation
 - Electro polishing
 - Black Oxide
 - Magnetic Crusher (Burrs Removal Process)
 - Ultrasonic Cleaning
 - MPI





Product Examples – Screw Machine





Product Examples – Screw Machine



NORTH / INDUSTRIAL
COMPONENTS AND TOOLING COMPANY



Product Examples – Screw Machine



NORTH / INDUSTRIAL
COMPONENTS AND TOOLING COMPANY



Product Examples – Multiple Axis Machining



NORTH / INDUSTRIAL
COMPONENTS AND TOOLING COMPANY



Product Examples – Castings & Machining



NORTH / INDUSTRIAL
COMPONENTS AND TOOLING COMPANY



Quality Inspection



NORTH INDUSTRIAL
COMPONENTS AND TOOLING COMPANY



Quality Inspection



NORTH / INDUSTRIAL
COMPONENTS AND TOOLING COMPANY



Quality Inspection

X-Ray Inspection



Spectrograph – Material Analyzer



NORTH / INDUSTRIAL
COMPONENTS AND TOOLING COMPANY



Cable Assemblies

- Bulk Cable
 - AC Adapters
 - LAN Accessories
 - Antenna/RF Cable
- Cable Assembly
PCB Accessory
Keystone Accessory

NORTH INDUSTRIAL
COMPONENTS AND TOOLING COMPANY



Cable Assemblies

Bulk Cable

- Coaxial cables (CM, CMP, CMR, CMX, CMH, CMG)
- LAN cables (CM, CMP, CMR, CMX, CMH, CMG)
- Computer cables
- Flat & Coiled cables
- RF cables
- MIL Spec. & Specialty Cables
- Hook up wires





Cable Assemblies

Cable Assembly

- Customize Cable Assembly
- Patch Cord
- DC Power Cord
- Power Cable
- Computer Cable Assembly
- A/V Cable Assembly
- Wire Harness
- OEM





Cable Assemblies

Equipment

- In House Tooling
- Molding Machines
- Horizontal Injection Machines
- Automatic Stamping Machines
- Manual Stamping Machine
- Fiber Optic Polishing Machines
- 48/18 assembly lines
- SMT Machines

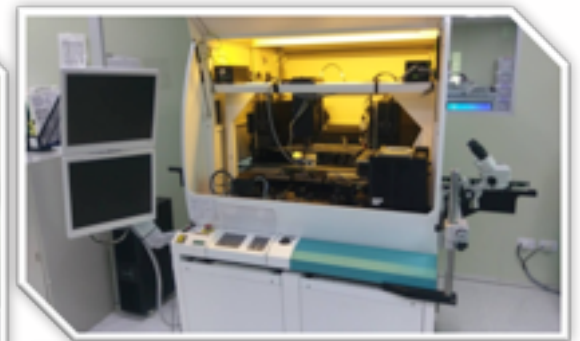




Cable Assemblies

Equipment

- Chip Auto Die Bonder
- Chip Auto Ball Bonder
- Chip Auto Wedge Bonder
- 2.5D Vision Measuring System
- Semi-Auto Ball Bonder
- Plasma Cleaner





Cable Assemblies

Tester / Analyzers

- One-Channel 10G Bit Error Rate Tester & Scope
- Four-Channels 10G Bit Error Rate Tester & Scope (40G)
- Automatic soldering machine(Hot Bar)
- Thermal Stream
- HDMI protocol Analyzer & Generator





Cable Assemblies

Tester / Analyzers

- Oxygen index measuring instrument
- Spectrophotometer
- Agilent Noise Figure Analyzer
- Bit Error Rate Tester
- JDS TESTER (LC, MTRJ, ST, SC, FC)
- FTM-100, FTM-200 TESTER (LC, MTRJ, ST, SC, FC)
- EXPO FOS-120A TESTER (LC, MTRJ, ST, SC, FC)
- Antenna 3D-Chamber Laboratory





**Plastic Injection,
Die Casting Molding
& Stamping Dies**





Tooling Development

North 7 Industrial provides tools efficient and high-quality plastic injection, die casting and stamping tooling. Our designers and engineers work closely to fully understand detailed customer requirements.

We Offer:

- Complete In-house Design Facility & 3D Mold Design
- CAD / CAM Software
- Component Process Analysis before Machining
- Moldflow Analysis
- PPAP Approval Process when required

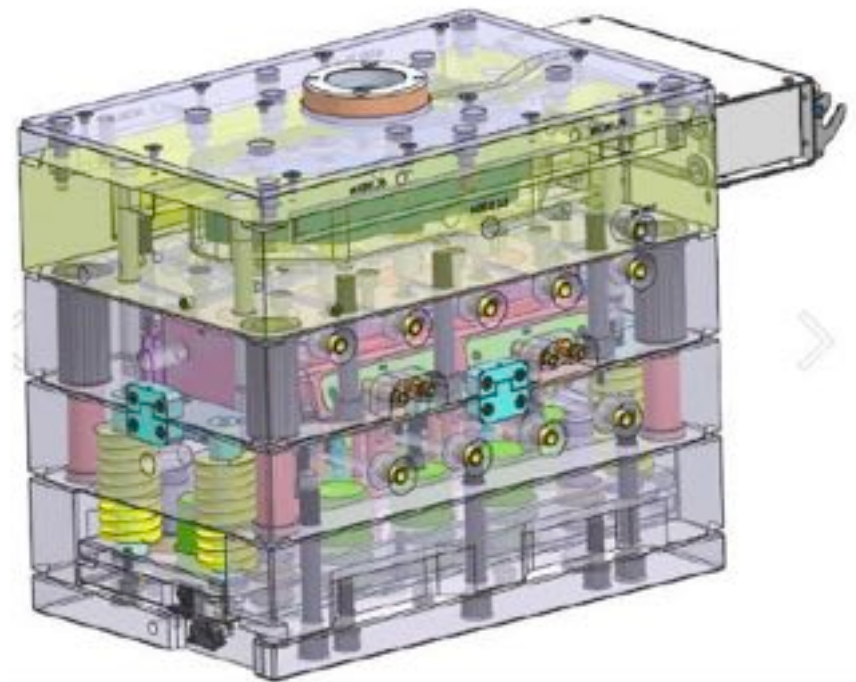
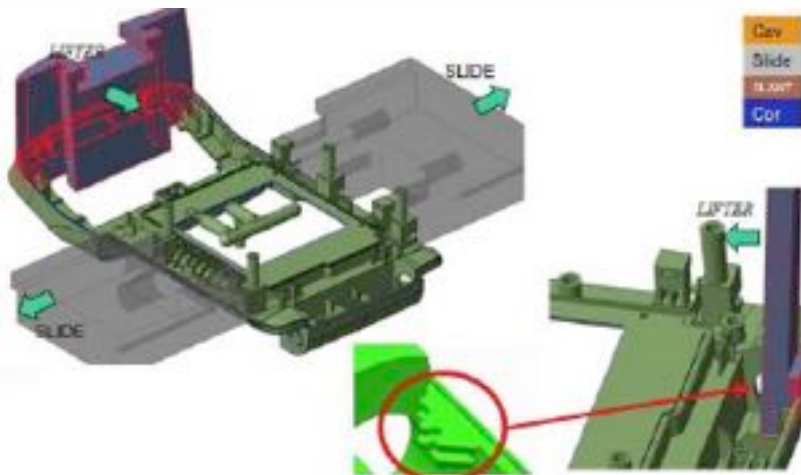




Tooling Development

Process:

- Provide DFM & 3D drawings (Solid works, Pro E, AutoCAD, etc.)

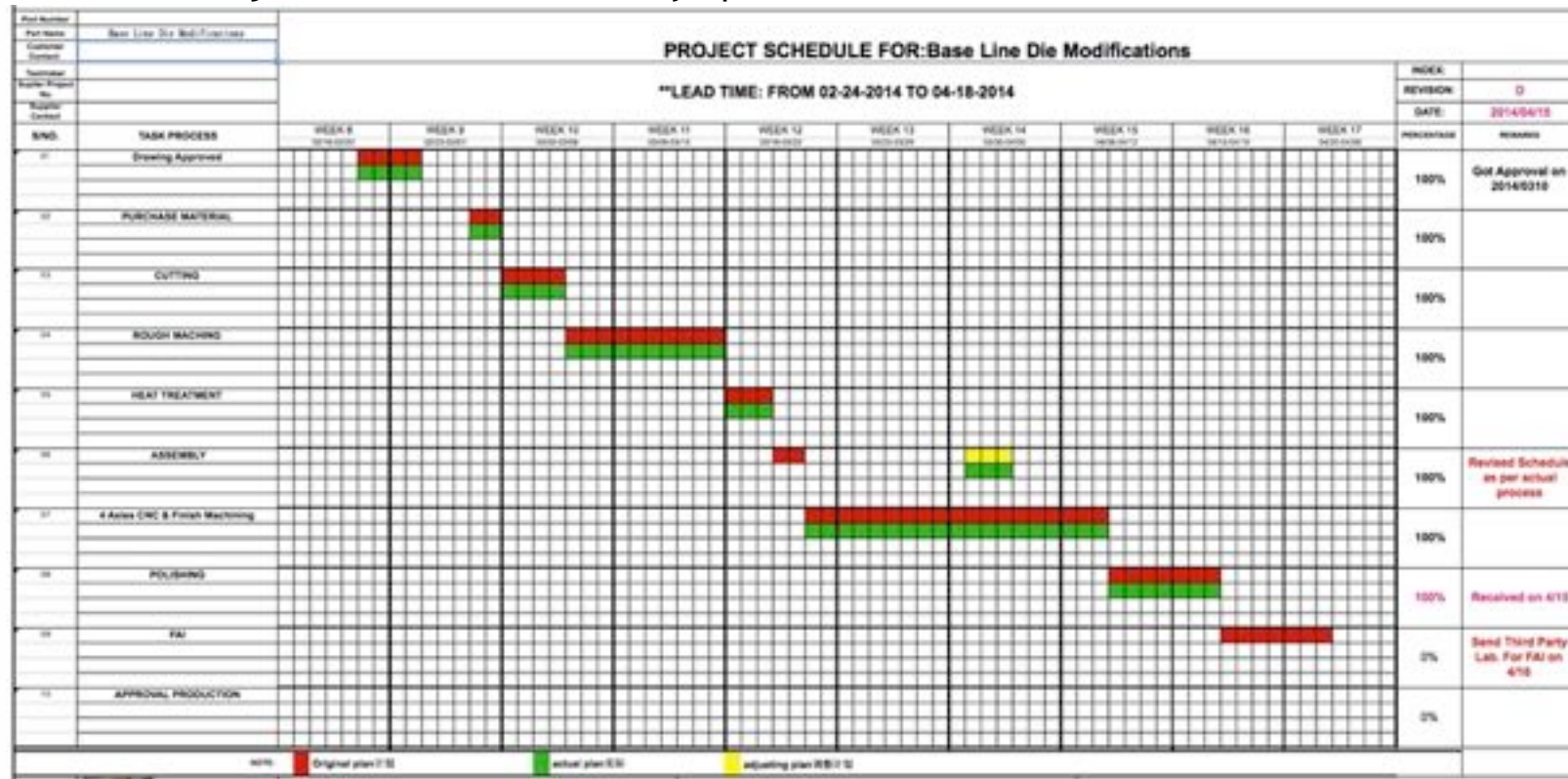




Tooling Development

Process:

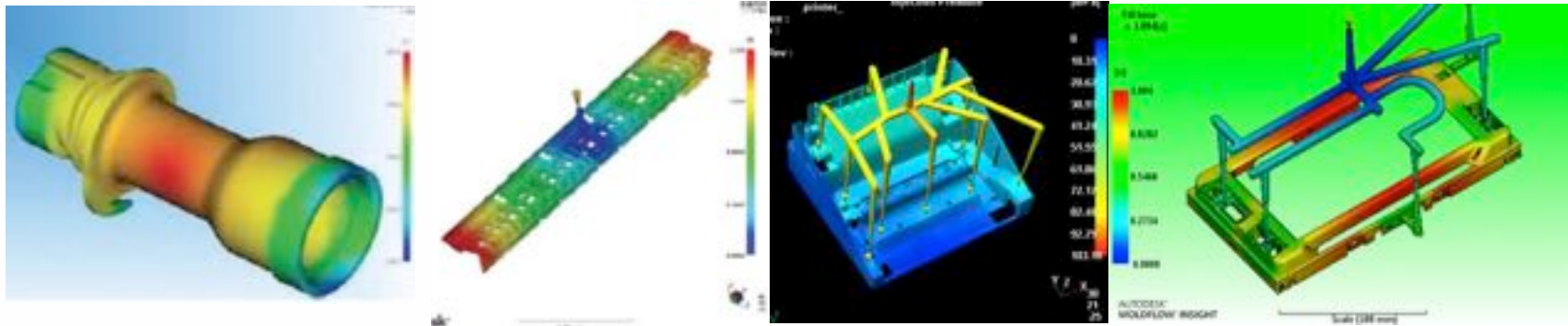
- Provide Project Timeline with weekly updates





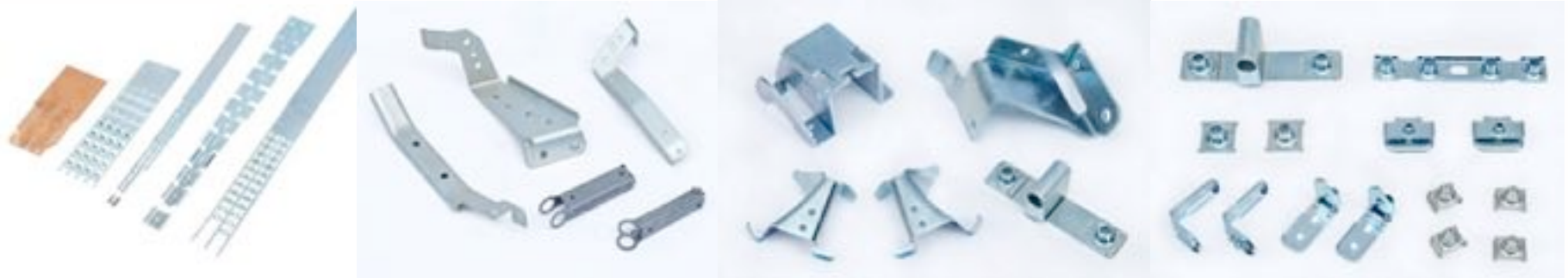
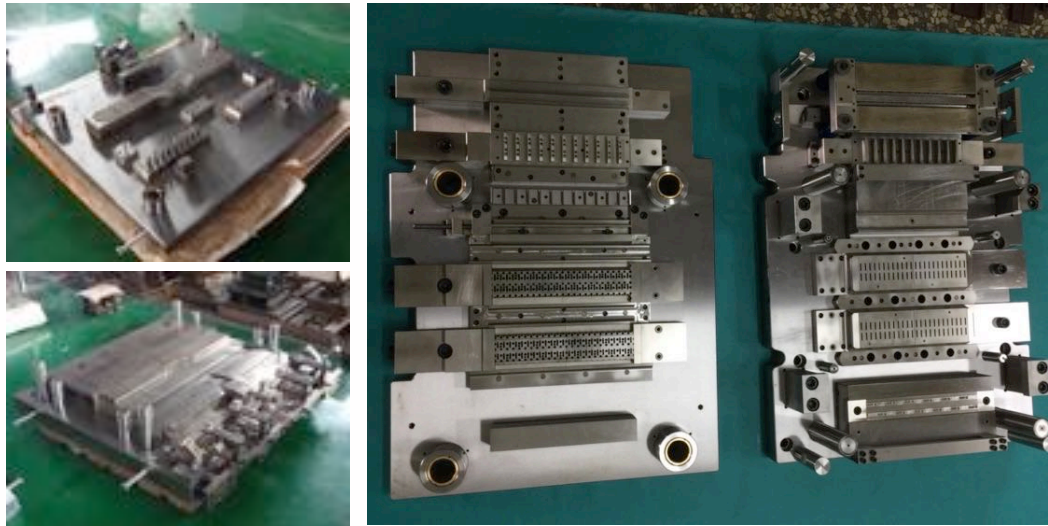
Tooling Development (Molding Plastic / Casting)

- **Steels:**
1.2738HH, P20HH, 8407, 1.2343, 1.2344, 1.2767, NAK80, 420ss, H13, etc.
- **Moldflow Analysis:**
PP, PC, ABS, POM, PPS, TPE, GF + PA66 (10% to 50%), Die Casting, etc.
- **Hot Runner Systems:**
Mold Master, Synventive, Incoe, HRS, DME, Yudo, etc.
- **Surface Finishing:**
SPI Standard, Mold-Tech, VDI, CH, Coating treatment, chroming, etc.





Tooling Development (Stamping)



NORTH / INDUSTRIAL
COMPONENTS AND TOOLING COMPANY



Screws & Fasteners



North Seven Industrial can meet all your Screws & Faster needs through our procurement & warehousing services on VMI program, for a customized proposal, please contact us at info@n7ind.com

NORTH INDUSTRIAL
COMPONENTS AND TOOLING COMPANY



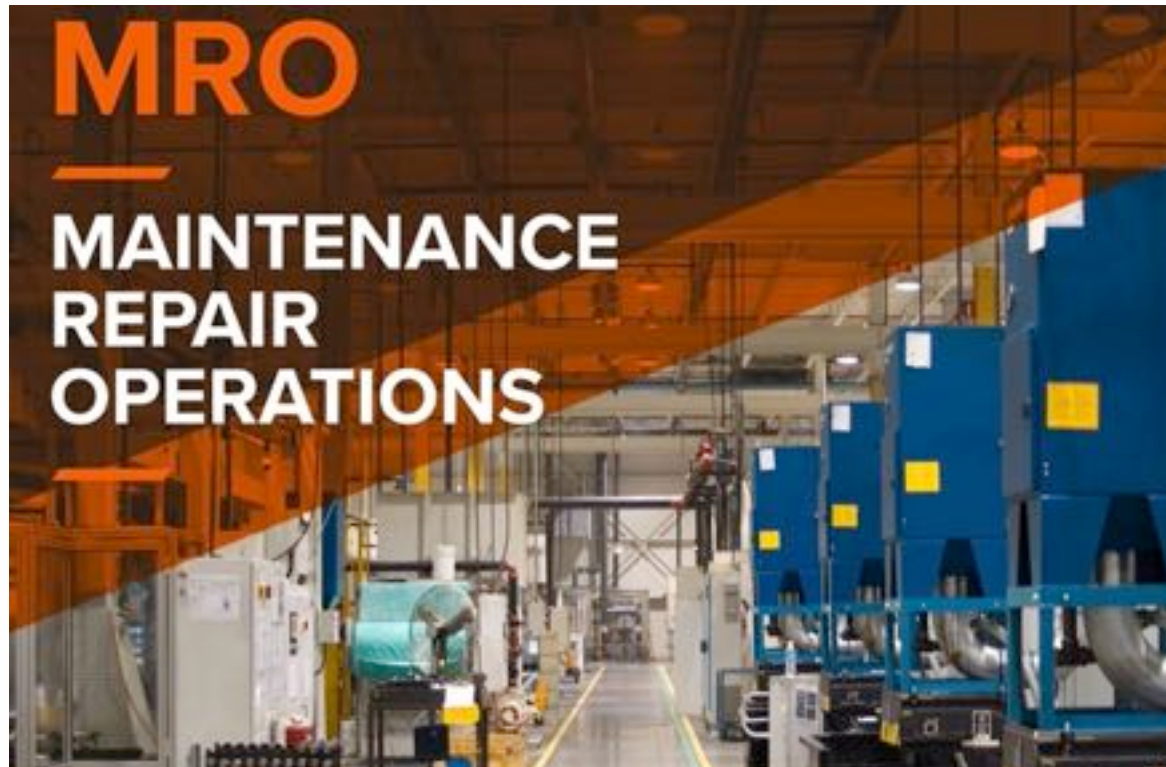
MRO Sourcing



During our 30 years of experience in OEM manufacturing, we have witnessed firsthand the importance that maintenance, repair, and operations supplies have on manufacturing day-to-day operations; North Seven Industrial can meet all your MRO needs through our procurement VMI / tool crib service.

For a customized proposal, please contact us at info@n7ind.com





Our experienced team understands the importance of having the correct products at the optimal times. We are committed to the success of our clients by streamlining product availability. We supply products in maintaining, repairing, or operating a facility or manufacturing process.





Vendor Manage Inventory Program



Our vendor management inventory service will help you meet your business inventory goals, improve your commodities lead times and reduce expedite costs.





Thank You!

NORTH 7 INDUSTRIAL, L.L.C.

1534 East 6th Street. Suite 203
Brownsville Texas. 78520
1(956) 525-4103

NORTH 7 INDUSTRIAL, L.L.C. WAREHOUSE

1705 Billy Mitchell Boulevard
Brownsville, TX 78521
1(956) 504-3133

WWW.N7IND.COM

[Mailto: info@n7ind.com](mailto:info@n7ind.com)



NORTH 7 INDUSTRIAL
COMPONENTS AND TOOLING COMPANY