

The background of the image is a grayscale photograph of an industrial machine, likely a CNC lathe or mill. The machine has a large, heavy-duty metal structure with various components like a rotating spindle, tool holders, and wiring. The lighting is somewhat dim, highlighting the metallic surfaces and the complexity of the machinery.

# **M MEINS** **INDUSTRIES**

**Machining Engineering & Industrial Solutions**

# OUR COMPANY



Meins Industries is a specialized company in providing solutions and services to the industry through the design and manufacture of high precision machining and engineering solutions.

***We satisfy the needs of our customers by using advanced technology for the innovative development of machined parts.***

# FACILITY



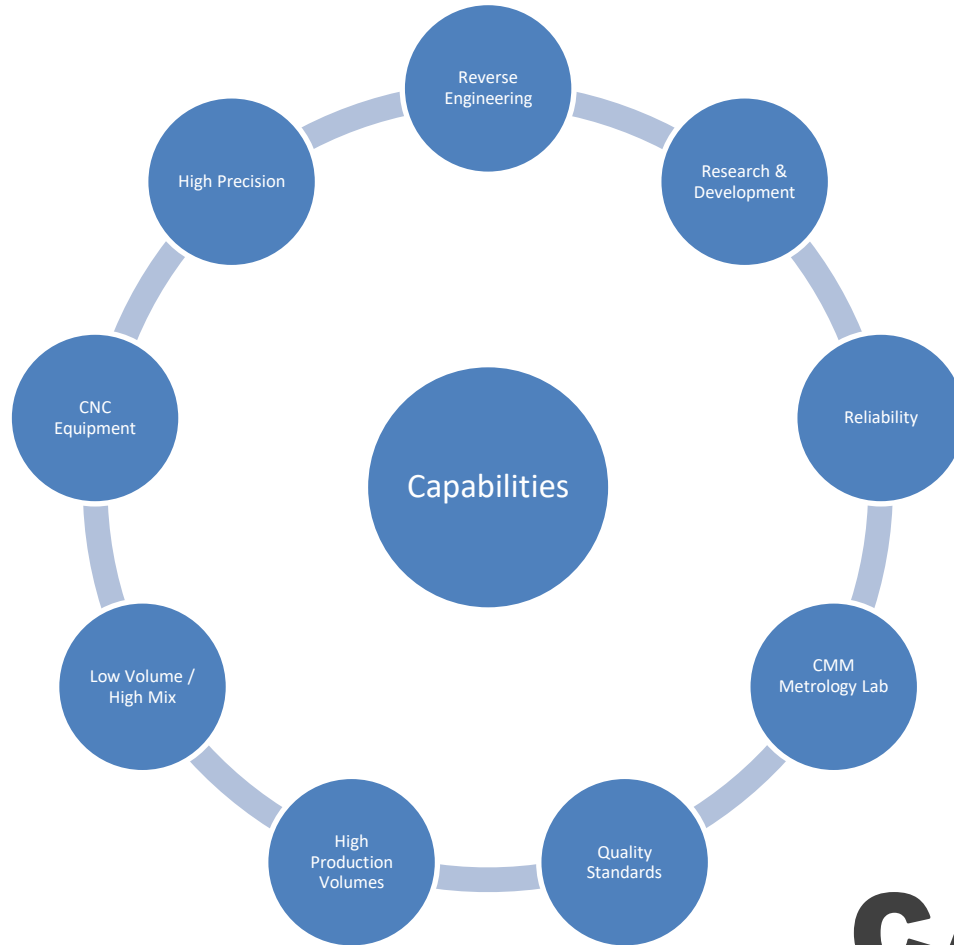
Av. de las Industrias #11369-7  
Complejo Industrial Chihuahua  
ZIP 31136  
Chihuahua, Chih.  
Mexico

**AREA:**  
**LAND: 1,184 m<sup>2</sup>**  
**BUILDING: 855m<sup>2</sup>**

# FACILITY

**M MEINS**  
**INDUSTRIES**  
Machining Engineering & Industrial Solutions





AEROSPACE



AUTOMOTIVE



OIL & GAS



COMMERCIAL



ELECTRONICS

# CAPABILITIES



# OUTSOURCED CAPABILITIES

## HEAT TREATMENT:

- ✓ Tempering & Quenching
- ✓ Normalizing
- ✓ Cementation
- ✓ Nitrided
- ✓ Nitro-carburized
- ✓ Stress Relieving
- ✓ Annealing



## PAINTING

## SHEET METAL

## METAL FINISHING:

- ✓ Zinc
- ✓ Passivating
- ✓ Phosphating
- ✓ Blueing
- ✓ Galvanizing
- ✓ Anodizing
- ✓ Electropolishing



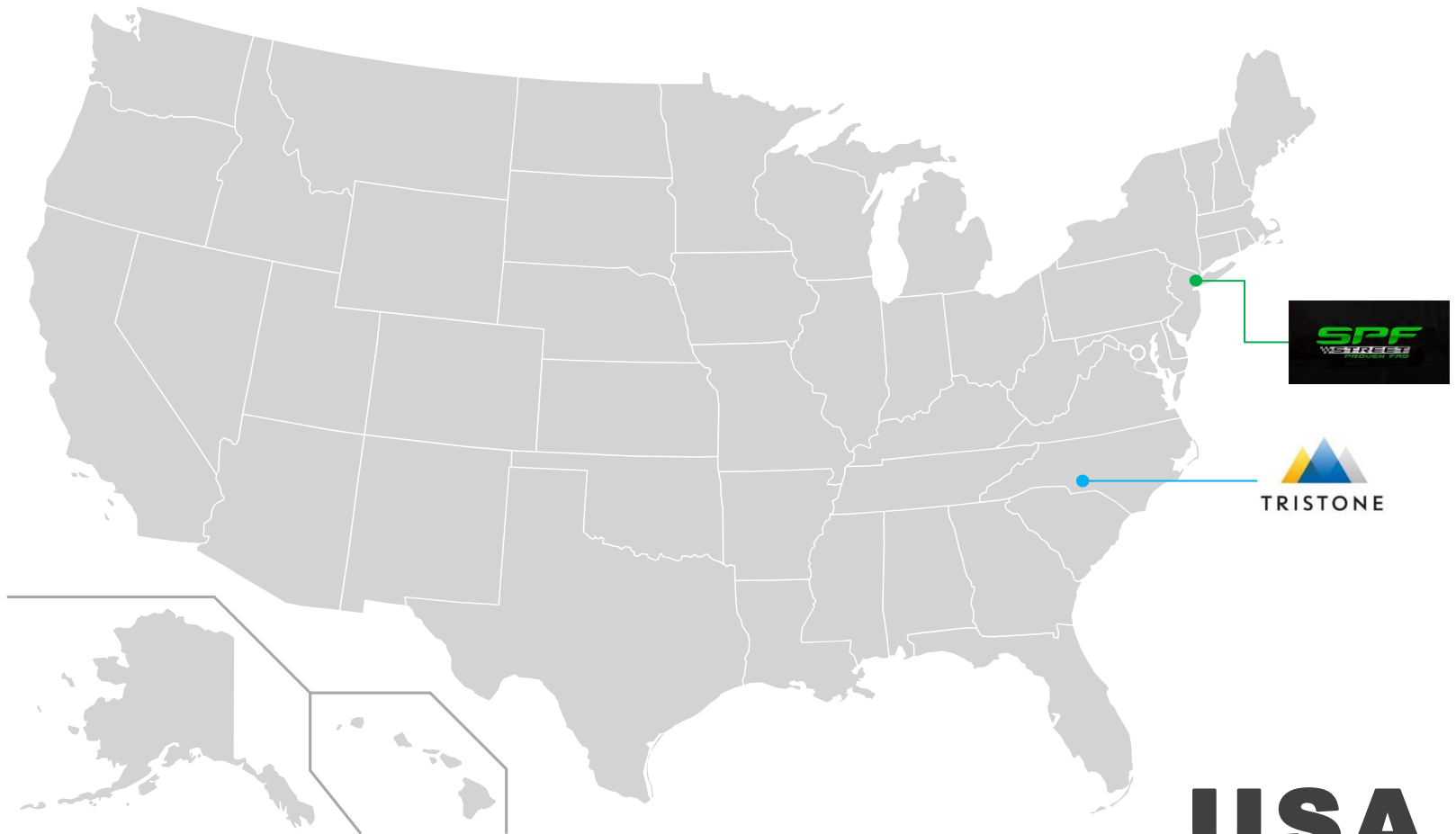
## ASSEMBLY

## SORTING & INSPECTION





# CUSTOMERS



**USA**



# COMPUTER AIDED DESIGN & COMPUTER AIDED MANUFACTURING



FIG. 1  
THESE  
DRAWINGS  
ARE  
FOR  
REFERENCE  
ONLY  
WITHOUT THE WRITTEN PERMISSION OF  
M&S INDUSTRIES IS  
PROHIBITED.

APPLICATION DO NOT SCALE DRAWING

A Dado Sup. R 30-676  
SCALE: 2:1 (mm)

1

(SHEET 1 OF 1)

# OUR SHOPS

## MILLING SHOP



SIMPLE CONVENTIONAL  
MACHINING

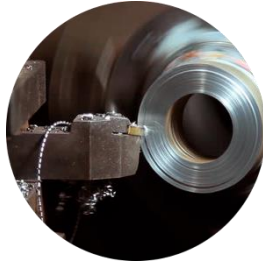
MANUFACTURE WITH WIDE  
TOLERANCES

LOW RESISTANCE MATERIALS

SIMPLE PARTS PRODUCTIONS

REPAIR AND MAINTENANCE OF  
INDUSTRIAL PRODUCTS

## TURNING SHOP



SIMPLE CONVENTIONAL  
MACHINING

MANUFACTURE WITH WIDE  
TOLERANCES

LOW RESISTANCE MATERIALS

SIMPLE PARTS PRODUCTIONS

REPAIR AND MAINTENANCE OF  
INDUSTRIAL PRODUCTS

## CNC MACHINING, CNC LATHES AND MACHINING CENTERS



HIGH VOLUMEN  
PRODUCTION

REPEATABILITY

PRECISION MACHINING

COMPLEX PARTS  
MACHINING

## WELDING SHOP



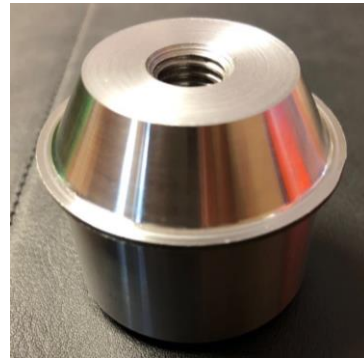
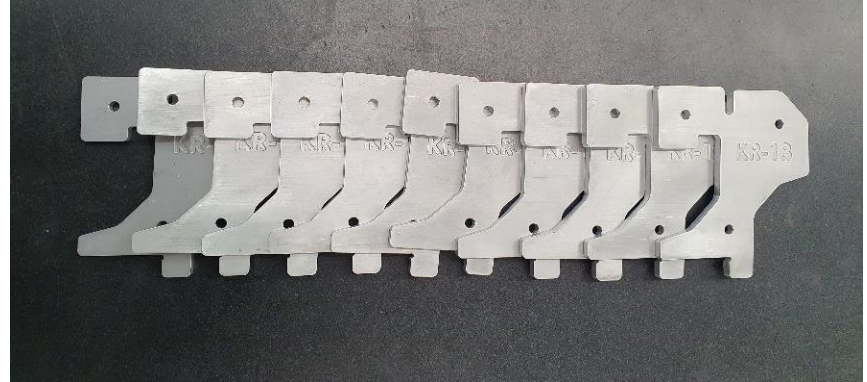
SPECIALIZED WELDERS IN:

SMAW

TIG

MIG

# MAIN PROJECTS

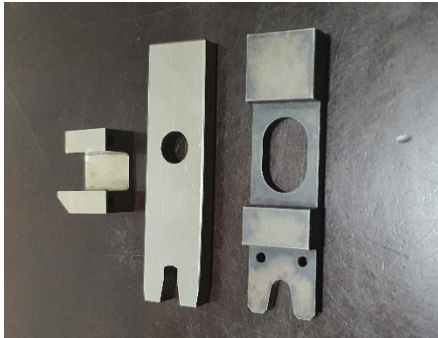


# MAIN PROJECTS

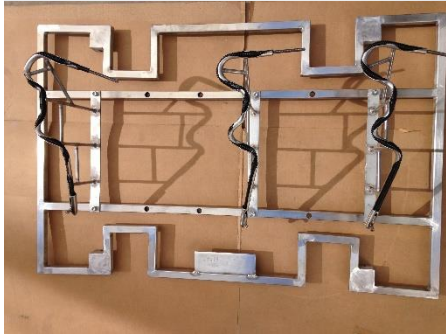




# MAIN PROJECTS



# OTHER SPECIALIZED TOOLING



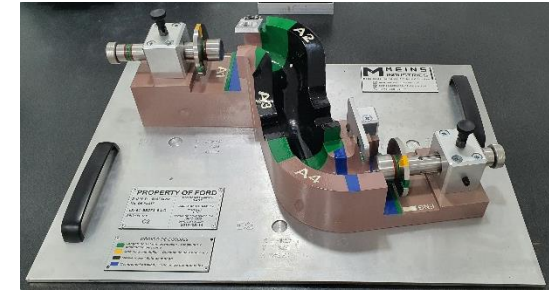
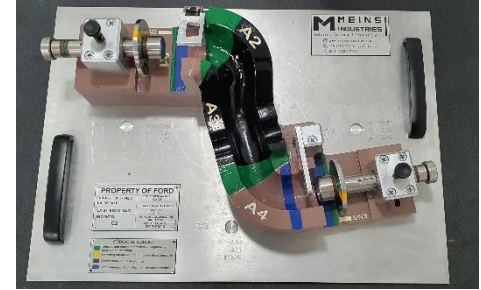
## CAVITIES:

Used for plastic hoses forming.



## MANDRELS:

Used for rubber hoses forming.



## CHECKING FIXTURES:

Used for hoses routing inspection.



# OEM's

Main OEM's that use our products/tooling:



Mercedes-Benz



# MACHINERY & EQUIPMENT

## CNC EQUIPMENT

4 Machining Centers

8 Turning Centers

1 Cylindrical Grinder

## CONVENTIONAL MACHINING EQUIPMENT

1 Mill

2 Lathes

1 Centerless Grinder





### Others:

- 1 Welder TIG/SMAW Miller Syncrowave 210
- 1 Welder MIG Millermatic 252
- 1 Lincoln SMAW RX450
- 3 Electrical welders
- 1 Hidraulic Bend-Pak bender with capacity for bending bars up to 2 in diameter1
- 1 Bender Diacro Modelo 4
- 2 Magnum 16in Bandsaw

# MACHINERY & CNC EQUIPMENT

# METROLOGY LABORATORY

## OPTICAL COMPARATOR

KEYENCE IM 3020



## ARM CMM

2014 FARO PRIME PORTABLE 3D MEASUREMENT ARM



# METROLOGY LABORATORY

## ARM CMM WITH INTEGRATED SCANNER

2019 ARTICULATED ARM  
COORDINATE  
MEASUREMENT MACHINE  
WITH OPTICAL DISTANCE  
SENSOR  
MODEL 7725SEI



## IN PROCESS CMM INSPECTION



# CERTIFICATES & DISTINCTIONS



SHOP MANAGED BY:







**LET US BE YOUR PARTNER.**

# M MEINS INDUSTRIES

Machining Engineering & Industrial Solutions



CHIHUAHUA

Av. De las Industrias #11369-7

Complejo Industrial Chihuahua



[cmedina@meinsindustries.com](mailto:cmedina@meinsindustries.com)



Office: (614) 260 72 53

Cellphone: (614) 192 69 71



[www.meinsindustries.com](http://www.meinsindustries.com)