



CT AUTOMOTIVE

Innovation Defines Us

CT Automotive Group PLC

2026



2000

CT Automotive, previously known as Chinatool Projects UK Ltd, was established with the sole purpose of offering European clients rapid lead times and affordable **Injection Molding Tools** sourced from China.



2003

The decision to specialize in the development of interior injection plastic components and creating tooling packages for well-known platforms like the **BMW Mini, Honda Civic, and Nissan Qashqai.**



2005

Established a **State-of-the-Art Tooling facility in Shenzhen** specializing in the design, precision manufacturing, and rigorous testing of advanced tooling and fixtures.

CT is TOOLMAKER since 2005



2006

In 2007, we achieved a significant milestone by developing the first serial production of air registers. This achievement was followed by the establishment of **Manufacturing Facilities** in Shenzhen to fulfill our production requirements.

CT is MANUFACTURER since 2006



2008

CT North America established in Detroit to serve **GM, Calsonic Kasei, and provide localized just-in-time (JIT) supply.**



2009

The UK Plant was opened in Newton Aycliffe to provide essential support for (JIT) manufacturing, assembly, and supply services to **CK EU, Magna, and Jaguar Land Rover.**



2012

In order to streamline and optimize the production process for the **Faurecia/Ford platform, the Kinematics Manufacturing** facility was strategically established in Istanbul.



2013

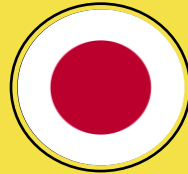
We have established a cutting-edge manufacturing facility in Ganzhou, equipped with advanced technology and a highly skilled workforce. Our strategic collaboration with tier 1 partners has led to the successful awarding of most new European platforms.



2014

Proudly recognized as an approved supplier to the VW/Audi Group and nominated for involvement in several new platforms.

Additionally, honored with the **Faurecia Platinum Supplier of the Year Award** and named the **GM 2014 Best Supplier**.



2015

The CT Japan Office has been established to facilitate expansion in the Asian market.

A new **Chrome Plating Facility** is inaugurating in **Shenzhen**.

Recognized as the **GM 2015 Best Supplier** for the second consecutive year.



2018

The Turkish facility is undergoing expansion, and there is sustained growth within the European Union.

Additionally, CT achieved success by being recognized as a winner in the Sunday Times HSBC International Track 200.



2019

The European Union's sustained expansion has resulted in the establishment of **Operations in the Czech Republic**.

Ford has awarded Q1 status to CT China facilities, recognizing their commitment to quality.



2020

CT has expanded its operations by opening a **New Design Office** in Pune, India.



2022

Company successfully completes Initial Public Offering (**IPO**) to expand its reach and attract new customers for continued growth.



2023

Established a manufacturing facility in Puebla, Mexico for efficiently serving the needs of our **North American & Latin American customer base**.



2025

2026 strategy emphasizes operational efficiency, global expansion, and sustainability to strengthen its position in the automotive interior components market.

FUTURE STRATEGY

Business Cases on study

CT Automotive Productions in:
EGYPT / BRAZIL



Management Team



Ray Bench
Chairman

Seasoned automotive professional with over 25 years of experience in the industry. Known for his strategic thinking and commitment to performance excellence, Ray has worked in various leadership roles, contributing to growth and innovation in every position. His expertise spans customer relations, team development, and operations management, making him an asset to any forward-thinking automotive team. Ray brings a passion for the industry and a drive to deliver exceptional results.



Simon Phillips
Founder & CEO

Founder and CEO of CT Automotive Group PLC, he co-founded the company in 2000, recognizing an opportunity to disrupt the European-dominated automotive tooling market. Simon has been instrumental in transforming CT Automotive from a tooling-focused business into a global supplier, serving major automotive OEMs worldwide. In July 2026, he transitioned from Executive Chairman to CEO.



Scott Mckenzie
CCO

Joined the company in 2007 from Magna Intier, bringing extensive experience in automotive interior development, tooling, and injection molding management. Scott advanced through various operational roles, becoming Operations Director and later Chief Executive Officer in 2014. In July 2026, he transitioned to his current role, focusing on sales strategy and product innovation.



Graham Mackey
COO

Steadily advanced through roles in manufacturing and operations management. He successfully led plant turnarounds post-covid, improving profitability through a hands-on, lean manufacturing approach and strategic digitization initiatives. Now, oversees global operations, driving efficiency, scalability, and consistent delivery of high-quality products to our customers worldwide.



Sal Mohamad
CFO

Appointed to the CFO role in October 2024, Prior to joining CT Automotive, Mohammed served as Group Financial Controller at Zote Foams PLC. He holds an MBA from the University of Warwick. In his current role, Mohammed oversees the company's global finance operations, supporting its strategic growth and operational efficiency.



SHENZHEN - China



Injection & Manufacturing
Fully Automatic Bi-Injection (2K)
Program Management
Validation Testing
IN-HOUSE TOOL ROOM
Tooling, Gages & Fixtures Manufacturing



GANZHOU - China



Injection & Manufacturing
Gas Injection (Grab Handles)
Lighting Division
Automatic Painting
Hot Stamping (ISO Certif. Clean Room)



GEBZE - Turkey



Injection & Manufacturing
OEM Approved Painting Line



PUEBLA - Mexico



Injection & Manufacturing up to 1850TN
Automatic Painting 2C2B + UV
IMD In Mold Decoration
Mold Pressing (Heat Wrapping)



DETROIT - United States



Distribution Center



TOKYO - Japan



Asia Sales Division



PUNE - India



Tech Center - Engineering Teams
IN-HOUSE Design & Development Hub



PORTSMOUTH - UK



Headquarters

Product Portfolio



Product Introduction

IP & Center Console

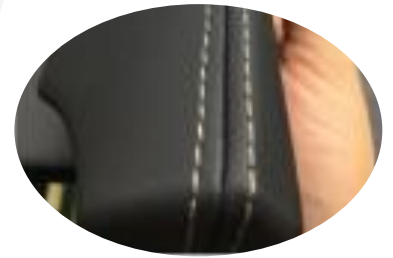
Cut, Sewed & Wrapped In-House (Manual & Mold Pressing)
Available in PVC, Alcantara & Leather
Decorative Finishers In-House



Product Introduction

Wrapped Assemblies

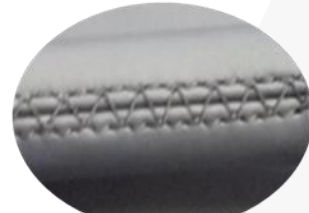
Complex Sewing & Wrapping Components
Functional & Decorative Stitching
Hydro graphics



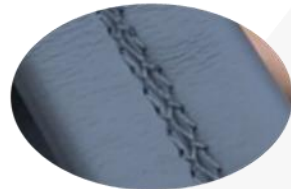
Product Introduction

Wrapped Assemblies

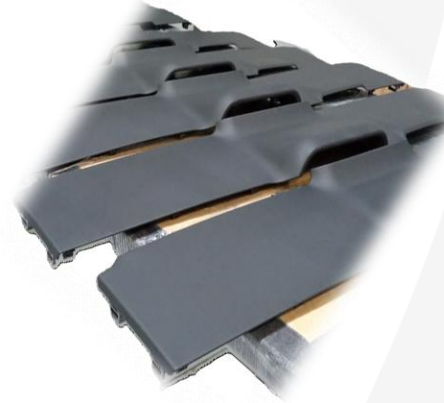
Grab Handles
Sun visors
Armrests
Gaiters
IP & CC Panels



Manual Sewing



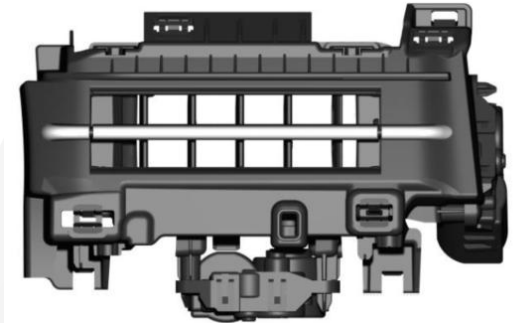
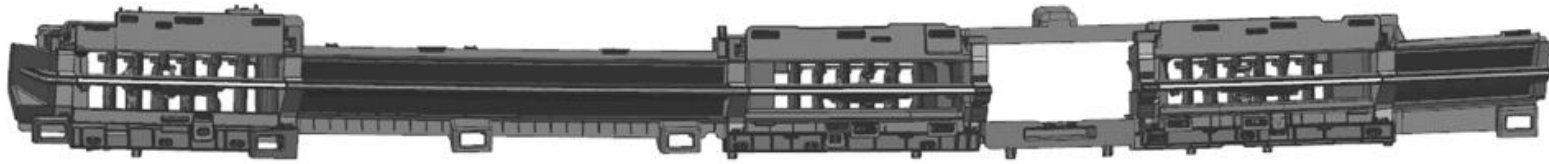
Manual Sewing



Product Introduction

Air Vents

IP & CC Airvents, Long & Slim, Motorized Dampers designed, developed and manufactured In-House



Product Introduction

Decorative Finishers (Painting, Chroming & Hot Stamping) – In House
HVAC Components – Ducts & 2K Flaps
Speaker Grilles



Product Introduction

Mechanical Assemblies

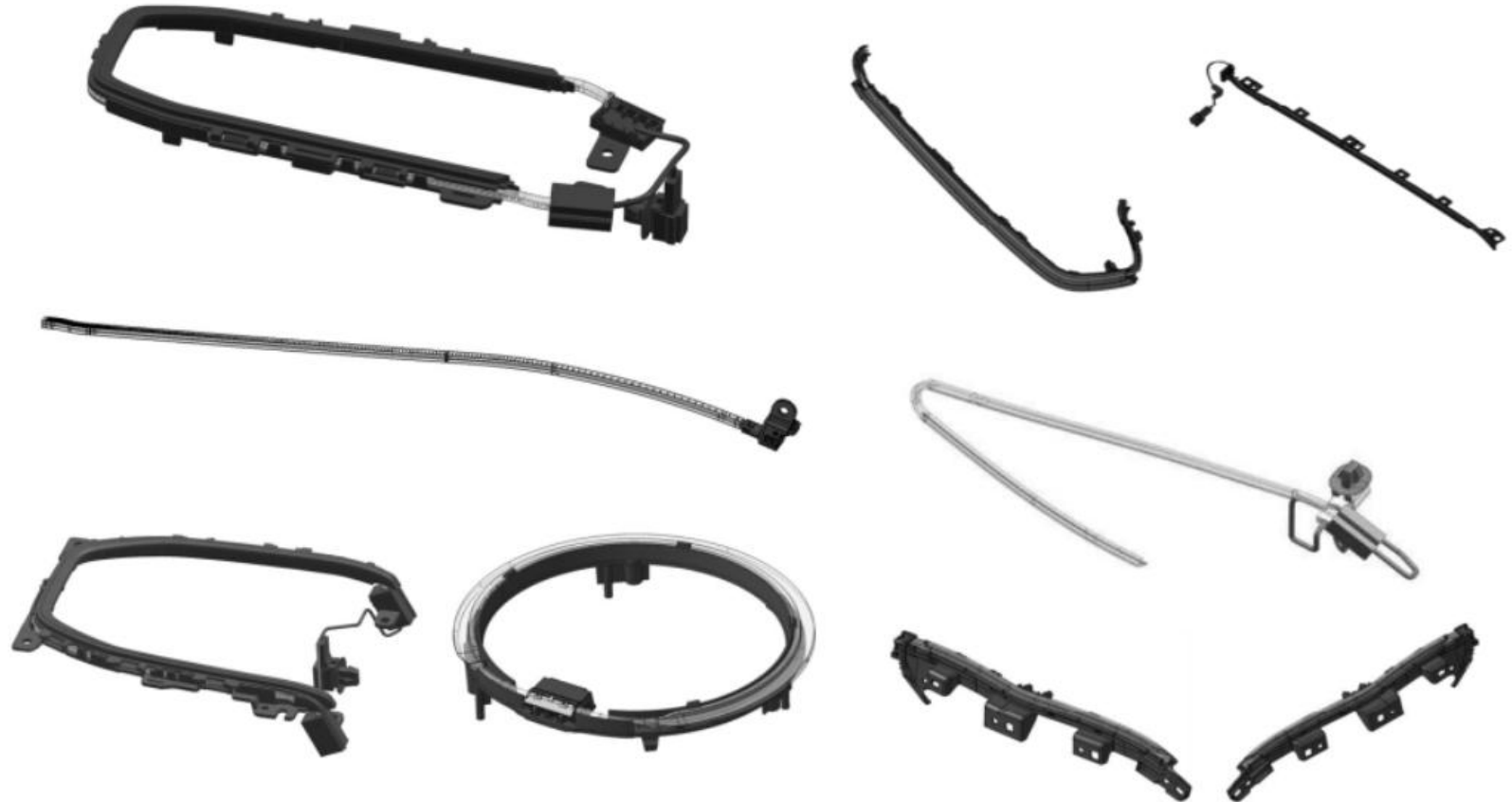
Door Handles
iPad / Phone / Cup Holders
2K Shutters (Roller Door)
Coat Hooks, Ashtrays & Instrument Cluster
Gloveboxes



Product Introduction

Guide Lights

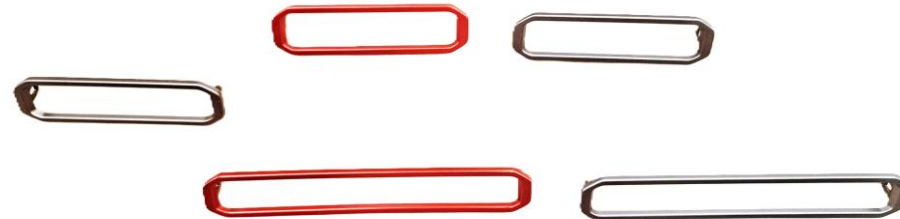
Expertise in Performance Validation
Testing Laboratory In-House
Finished Component with LED Unit & Connector- Direct into OEM Assembly Line



Product Introduction

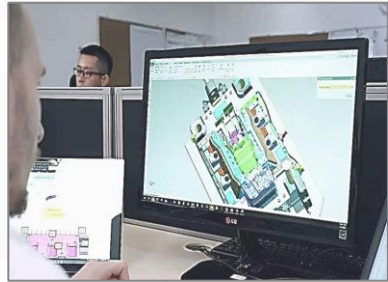
Decorative Finishers

Painting 2C2B+UV
IMD In Mold Decoration



CT AUTOMOTIVE

25th
ANNIVERSARY



ED&D

Ingeniería,
Diseño
Desarrollo



TESTING

Laboratorio
ISO 17250



TOOLING

Diseño y Fabricación
de Moldes y Gages



DECOS

Pintura Automática
2C2B + UV
IMD In Mold
Decoration



CT MX

All Services **IN-HOUSE**
OUR COMPETITIVE ADVANTAGE

INJECTION

Hasta 1850TN



ASSEMBLY

Manual y Automatizado
100% QA Check
Corte, Costura y Forrado
de Pieles
(Manual & Mold Pressing)



LOGISTICS




























Exportación Global



Customers

Customers

Strong reputation with both OEMs and Tier 1 customers across the industry Current Split is 40% OEMs and 60% Tier 1s.

OEMs	Volume brands				Premium brands		Electric vehicles			
										
										
Tier 1 Suppliers	> 20years		> 15 years			> 5 years		Newest Customers		
								 		
										

CT AUTOMOTIVE

Innovation Defines Us

CT AUTOMOTIVE
SYSTEMS
DE
MEXICO



Strategic Location

PUEBLA

	DISTANCE FROM THE CITY OF PUEBLA	ESTIMATED TIME BY CAR
A la Ciudad de México:	129 kms.	1.40 hrs
A Veracruz:	280 kms.	2.52 hrs
A Manzanillo:	956 kms.	9.08 hrs
A Guatemala:	1,130 kms.	13.00 hrs
A Nuevo Laredo:	1,230 kms.	11.50 hrs

Population: 6.2 Million

Key access to ports and rail lines strengthens our supply chain and export routes to the United States and South America.



More than 1,056 kms of railway goes across the state connecting it with the southeast, center and north of the country.

>> USA

Currently 65% of Products are exported to USA

Colombia <<
Ecuador <<
Perú <<
Chile <<

>> Brazil
>> Argentina

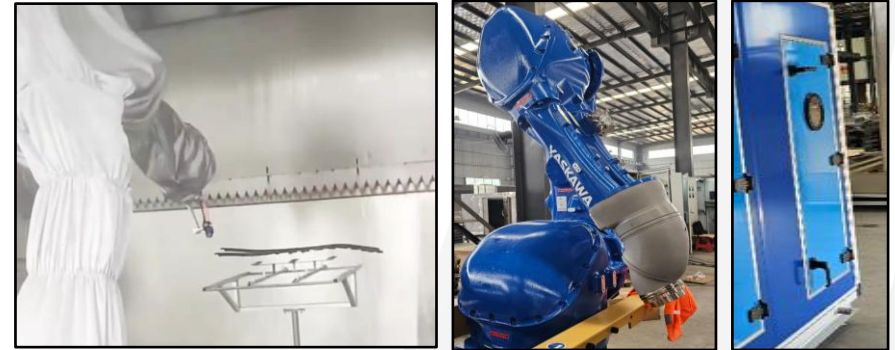
Current Processes

CT AUTOMOTIVE SYSTEMS DE MEXICO

PLASTIC INJECTION – 80TN to 1850TN



AUTOMATIC PAINTING 2C2B + UV



SKINs CUTTING & SEWING



WRAPPING



MOLD PRESSING



ASSEMBLY



IMD In Mold Decoration





CT Automotive Group PLC

Low default risk, with very strong Core Health.



Certifications & Ratings

CT Automotive Systems de Mexico

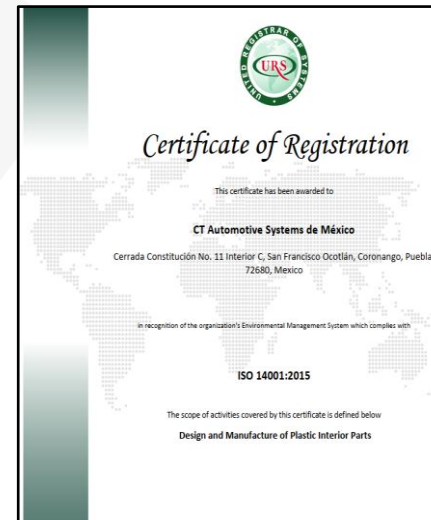
ISO 9001



IATF 16949



ISO 14001



ISO 45001








CT AUTOMOTIVE

IN-HOUSE – TOOLING

CT Manufactures 100% of the Injection Molds.

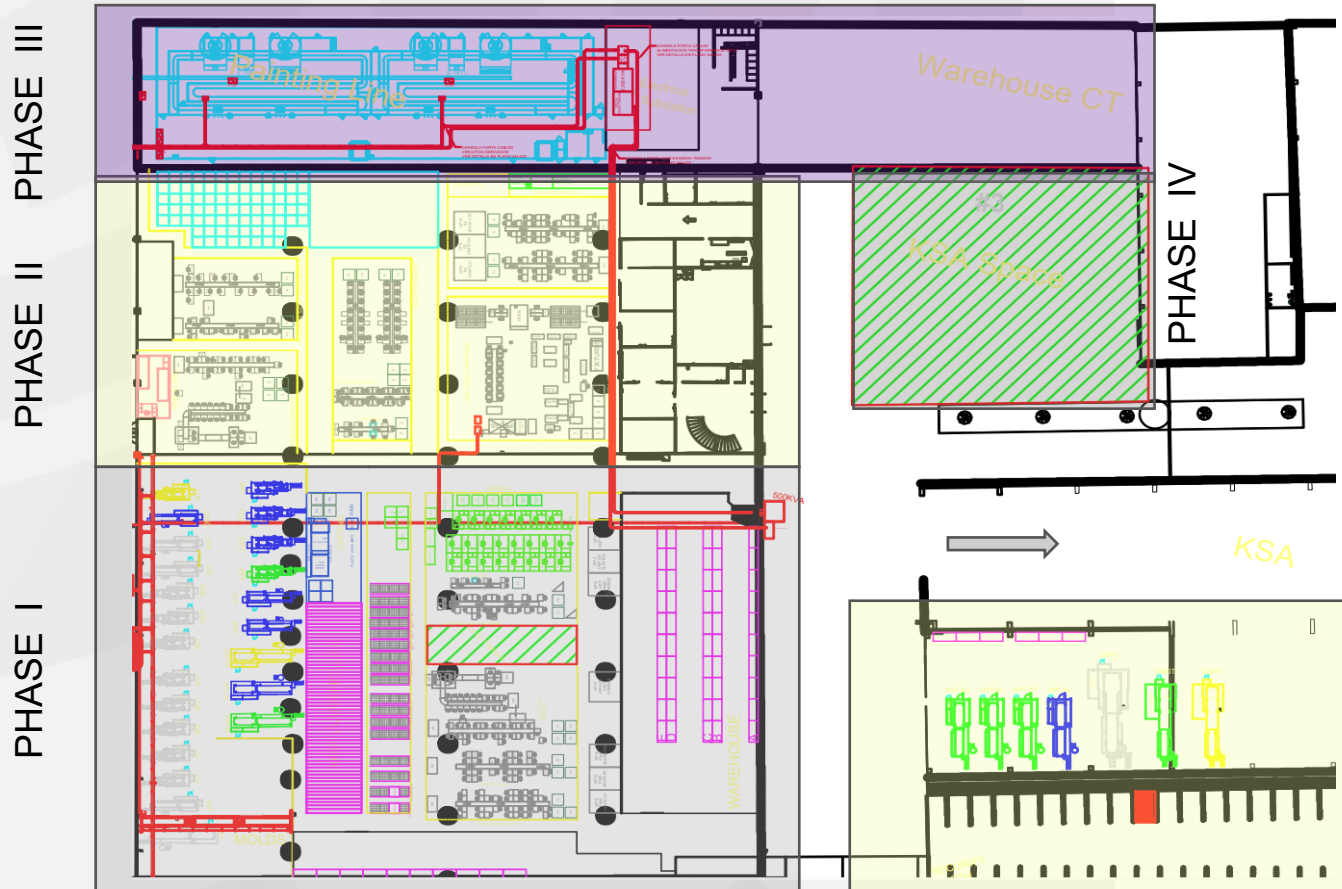
Injection Capacity

	SIZE	ACTUAL	+	By Jun 2026	TOTAL
	80 TN	5		3	8
	120-150 TN	7		3	10
	200-260 TN	5		2	7
	400-600 TN	7		5	12
	1000-1850 TN	2			2
	TOTAL	26			39

Plant Layout ~ 12,000m²



Continuous Expansion Zones



<p>PHASE I – 5000m² Completed in 2022</p> <ul style="list-style-type: none"> - Injection up to 600TN - Assembly Lines - PVC Cut, Sew & Wrapping
<p>PHASE II – 3000m² +1200m² Completed 2024</p> <ul style="list-style-type: none"> - Injection up to 1850TN - Heat Wrapping (Mold Pressing)
<p>PHASE III – 2900m² SOP Q2 2026</p> <ul style="list-style-type: none"> - Automatic Painting 2C2B +UV

 **PHASE IV ~ 1300m²**
SOP May 2026

