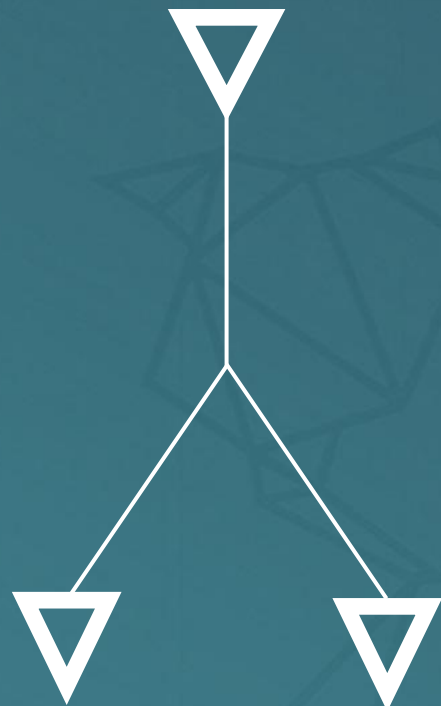


zweisTEX Mexico  
We manufacture trust.



DR. ZWISSLER  
HOLDING AG



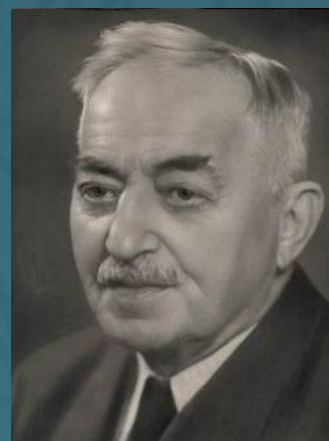
ZWISS  
TEX

textile  
surfaces

ZWISS  
SUN

sun &  
rain protection

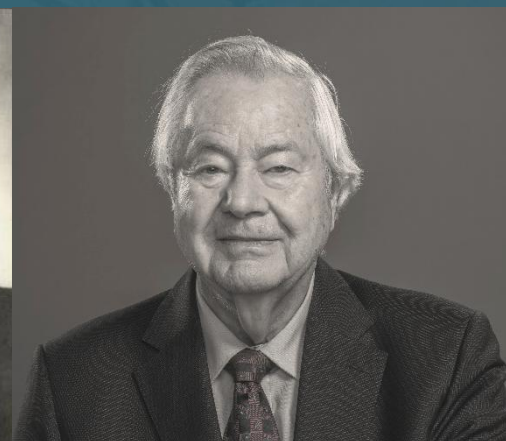
**Matthäus Schmid**  
Managing Director  
Mechanische Weberei  
Gerstetten



**Julius Zwissler**  
Partner  
Mechanische Weberei  
Gerstetten



**Dr. Ulrich Zwissler**  
Chairman of the Board  
Dr. Zwissler Holding AG  
multiple production companies worldwide



family owned for 150 years

1872

**zweisTEX Mexico**  
Tetla , Tlaxcala



**zweisTEX Germany**  
Gerstetten-Heldenfingen



**zweisTEX China**  
Joint Venture: Texline (part of Huazhong group)  
Ningbo, Hangzhou Bay Zone

**zweisSUN**  
Nova Hüppe, Oldenburg  
Alfons Hannig, Rehburg-Loccum

500 Employees  
5 Locations  
3 Continents

about  
120 Mio. €  
group revenue

# ZWISS TEX

Mexico

Founded in 2014, zwissTEX Mexico is a well-established automotive supplier specializing in technical textiles and lamination technologies (Tier 2–4).

Located in Tetla, Tlaxcala – strategically positioned 75 km from Puebla and 140 km from Mexico City.



6,000 m<sup>2</sup> of surface area



62 Employees



1 Flame Lamination Machine



1 Wide Slot Lamination Machine



1 Flat- bed Lamination Machine



1 Cutting Machine



Capacity ca. 6,000,000 lm of laminated material / Year

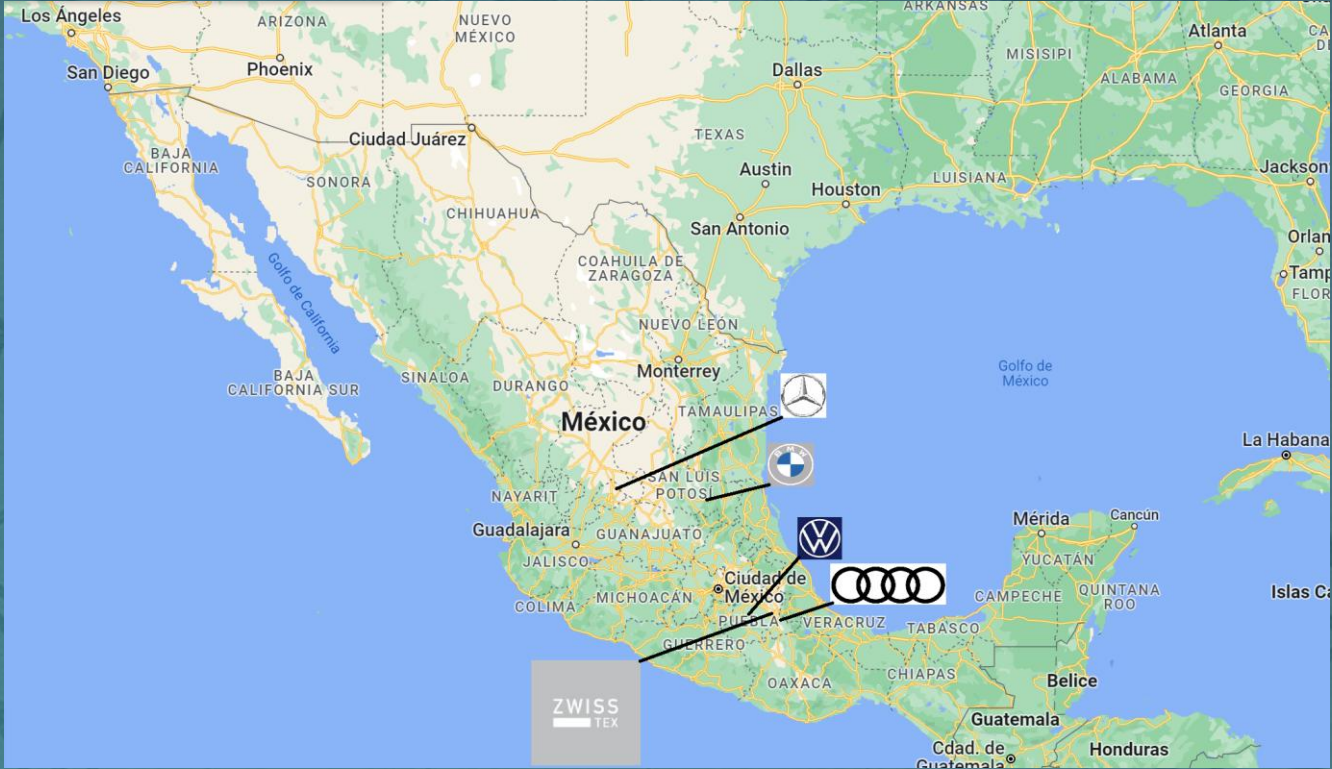


Est. 3,000,000 LM laminated in 2025



Est. 2,000,000 pieces cut 2025

zwissTEX Mexico  
Tetla, Tlaxcala

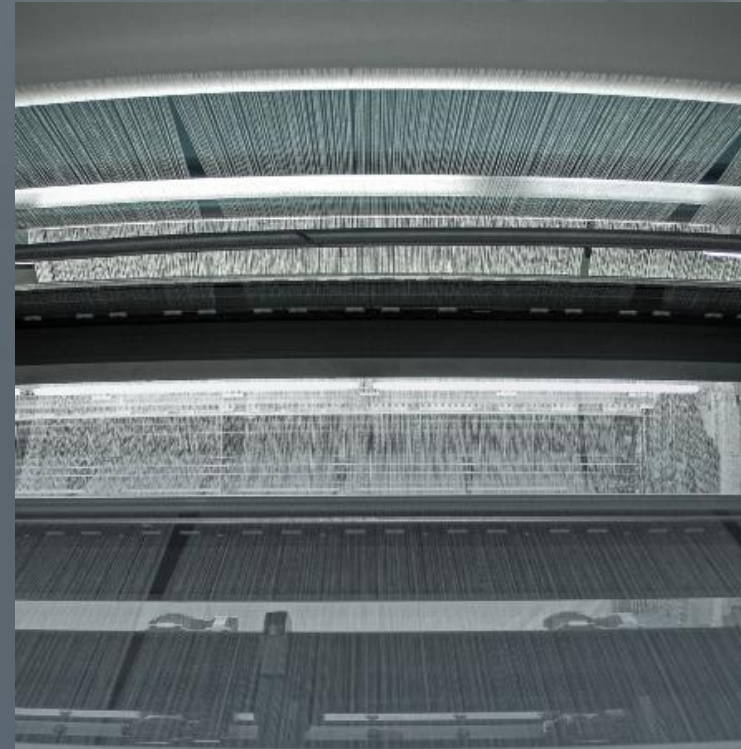


- Distances OEM's:
- AUDI - 40 km
  - VW - 46 km
  - BMW - approx. 500 km
  - Daimler - approx. 550 km



## Textile Knitting

- Through strategic partnerships and advanced know-how, we provide cutting-edge manufacturing solutions for premium warp-knitted and spacer fabrics
- Driving innovation through close collaboration and customer-focused development





1 Flame Lamination trilateration

- Efficient solution for simple, sandwich, and complex material combinations



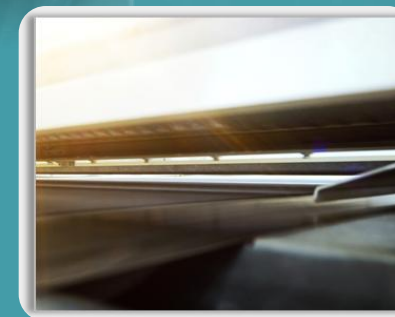
1 Wide Slot Lamination (Powder & PUR)

- Precision glue lamination for simple, sandwich, and complex structures



1 Flat-bed Lamination (WEB, PSA, Film, etc.)

- Controlled thermal process enabling versatile and complex material combinations





### Gerber Cutter (Knife technology)

- High-precision cutting for complex patterns and diverse material requirements
- Engineered to maximize material efficiency and ensure cost-effective production





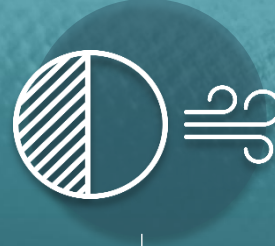
**Automotive: Interieur**

Door panel  
Dashboard  
Armrest  
Headrest  
Pillar  
Parcel shelf



**Automotive: Seating**

Upholstery  
Climate Seat



**Automotive: Shading & Wind**

Shading (sun roof blind, side and rear window)  
Wind protection (guard nets, deflectors)  
Sun visors  
Convertible headliners

Some of our Business Footprint – zwissTEX Mexico

### Headliners

→ Fabric, Lamination & Cutting



### Pillars (A/B/C Trim)

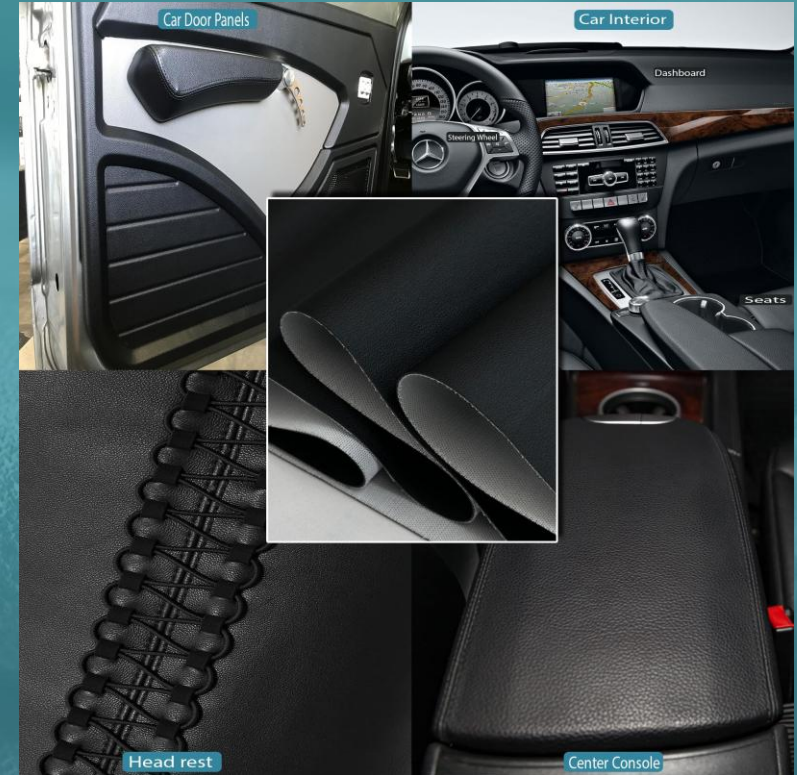
→ Lamination & Cutting

### Door Panels & Armrests

→ Lamination & Cutting

### Seating Applications

→ Lamination



zwissTEX Applications

Spacer Fabrics for Unlimited Functionality

# FREE D MESH

ZWISSTEX

MESH

FREE D MESH integrates two knitted layers with spacer yarns to create a three-dimensional structure—combining multiple functionalities and design possibilities in one high-performance textile.



High flexibility in function



Broad spectrum of colors, patterns, and aesthetics



Manufactured from 100% recycled yarns in a single-step process

Automotive seating

Headliners

Upholstery

Medical textiles

Personal protective equipment

Filtration

Customer Portfolio Zwisstex México



Mercedes-Benz



**THANK YOU**  
FOR YOUR ATTENTION