



MacLean-Fogg
COMPONENT SOLUTIONS

MacLean-Fogg Component Solutions

Company Overview

2025



For Us, For Family

Our Pledge To Safety & Core Values

INTEGRITY IS THE VALUE
UPON WHICH EVERYTHING
ELSE RESTS

IT'S ABOUT **PEOPLE**

For **For Us**
Family

We believe all incidents are preventable.

We believe no job is so important and no task is so
urgent that we cannot do our work safely.

We believe in protecting ourselves and each other,
every day.

At MacLean-Fogg, safety is a way of life.

WE VALUE **STEWARDSHIP**

OUR **CUSTOMERS** ARE
THE FOCUS OF
EVERYTHING WE DO

MacLean-Fogg Company

Overview



MacLean-Fogg is an ever-evolving manufacturing company driven to add-value for customers, employees, stakeholders and shareholders. “Help the Industry, and We Help Ourselves. Serve the Customer, On Time with a Fair Price and World Class Quality.”



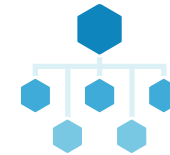
1925 **Our Beginning**

Founded in 1925, MacLean-Fogg offered one lock nut to North America’s railroads.



2000 **Our Employees**

MacLean-Fogg’s worldwide workforce consists of more than 2,000 dedicated employees



5 Groups **Our Divisions**

MacLean-Fogg is comprised of five primary business groups: Fastener Solutions, Engineered Solutions, Plastic Solutions, Additive Solutions, and Mallard Manufacturing.

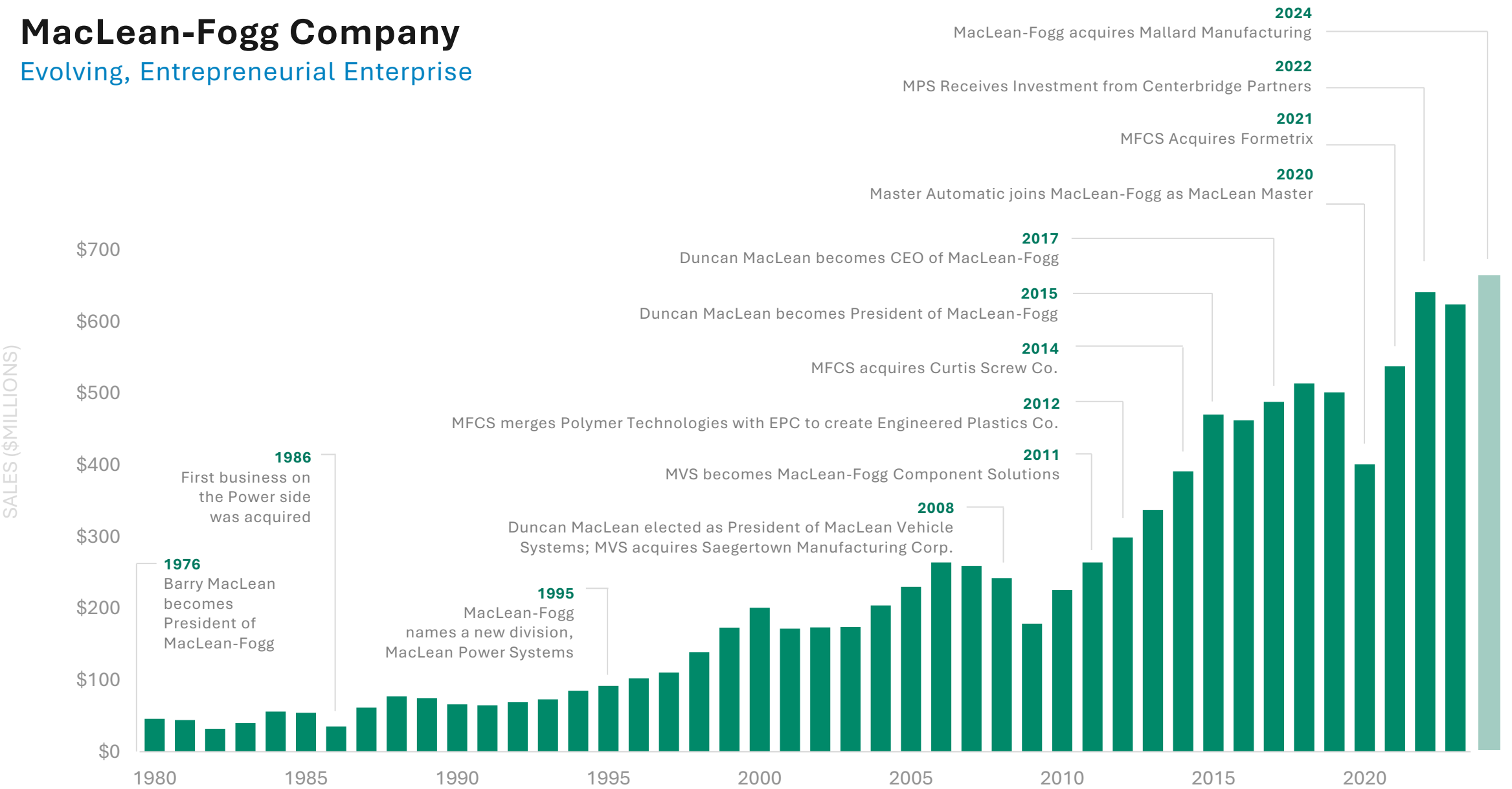


18 **Our Facilities**

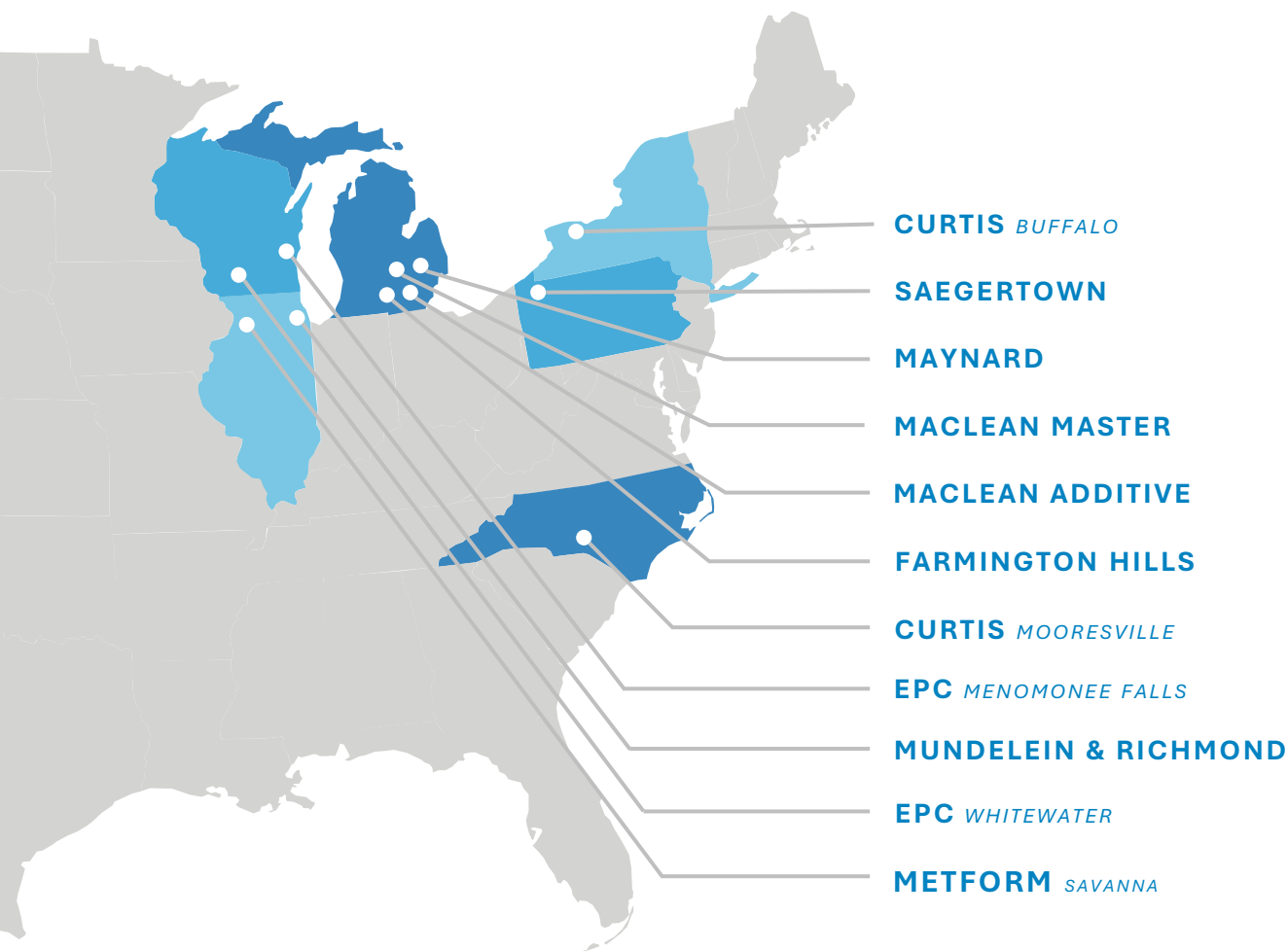
MacLean-Fogg has 19 manufacturing facilities throughout North America.

MacLean-Fogg Company

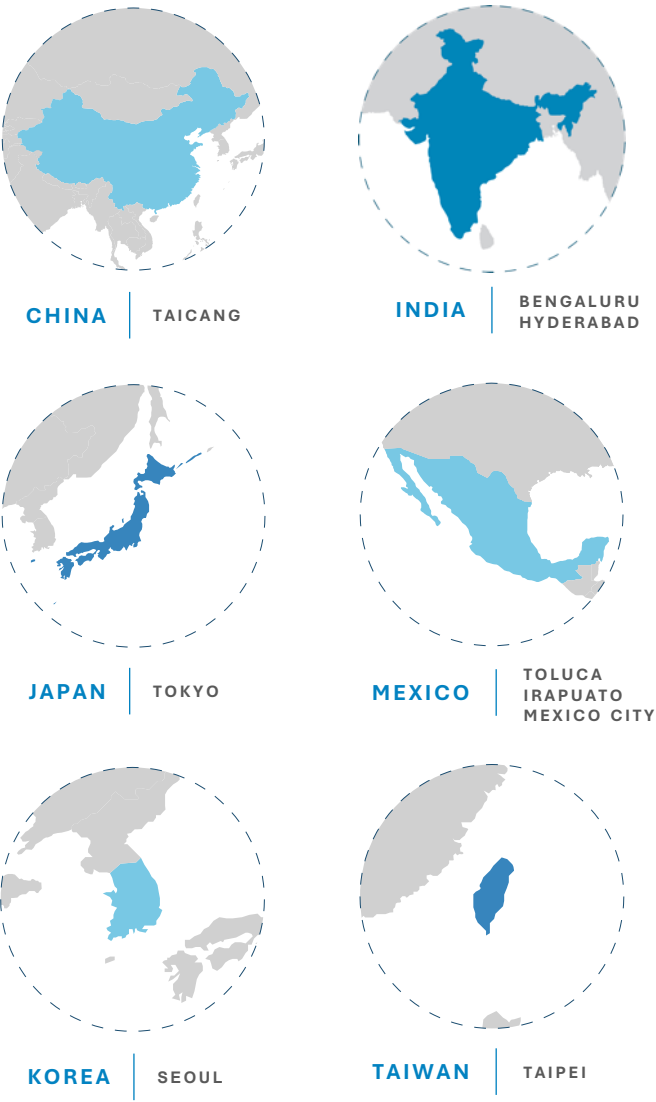
Evolving, Entrepreneurial Enterprise



Production Locations



Global Support



A few of our customers

AUTOMOTIVE



MUSASHI



HONDA

nexteer
AUTOMOTIVE

H.D. TRUCK & OFF-HIGHWAY



JOHN DEERE



Great Dane



HINO



PACCAR

NAVISTAR

INDUSTRIAL



Giant

STANLEY

Snap-on

BRADFORD WHITE

Product Offerings

FASTENER SOLUTIONS

Wide range of internally and externally threaded fasteners for specialized applications.



ENGINEERED SOLUTIONS

Value-added, unique, application specific components for automotive, appliance, heavy duty, mining, hand tool & industrial applications.



PLASTIC SOLUTIONS

Close tolerance engineered functional plastics for a variety of applications.



ADDITIVE SOLUTIONS

Innovative steel materials and applications via Additive Manufacturing.

Core Technologies



COLD FORMING



WARM FORMING



HOT FORGING



**CNC & SCREW
MACHINING**



HEAT TREAT



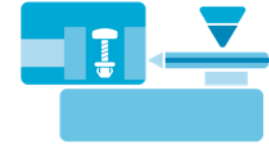
THREAD TAPPING



DEEP DRAWING



**AUTOMATED
ASSEMBLY**



**INJECTION & INSERT
MOLDING**



**PRECISION
GRINDING**



**AUTOMATED
INSPECTION**



**ENGINEERED &
EXOTIC MATERIALS**



**ADDITIVE
MANUFACTURING**



**ENGINEERED
MATERIALS**



**FASTENER
INNOVATION**

Industries Served



AGRICULTURE



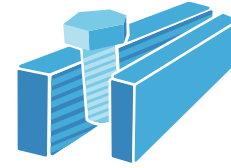
APPLIANCE



AUTOMOTIVE



CONSTRUCTION
VEHICLE



TOOL MAKING
INDUSTRY



FIRE SAFETY



HAND TOOL



HEAVY DUTY TRUCK
& TRAILER



INDUSTRIAL
ENGINE



INDUSTRIAL
MOTOR



INDUSTRIAL
SOLUTIONS



MILITARY
& DEFENSE



MINING



OFF-HIGHWAY



RECREATIONAL
VEHICLE



ROAD CONSTRUCTION



WATER FLOW
& CONTROL



WIND POWER

Plant Overview

Appendix



MacLean Fasteners

Mundelein, IL | Richmond, IL



01

KEY PRODUCTS

Wheel Nuts
Engine Plugs
Transmission Plugs
Machined Specials
Cold Formed Specials
Nut Washer Assemblies

02

CORE PROCESSES

Cold Forming
CNC Machining
Internal / External Threading
Design & Applications
Engineering

03

KEY INDUSTRIES

Automotive
Heavy Duty Truck
Heavy Duty Trailer
Industrial Engine
Agriculture
Off-Highway
Recreational Vehicles

Fasteners Capabilities

M5 ~ M18 Internal Thread:

- Clinch-Lock Nuts.
- Step Lock-Nuts.
- Prevailing Torque Nuts
- Nylon Insert Lock-Nuts.
- All Metal Lock – Nuts.

M6 ~ M24 External Thread:

- Plugs



MacLean Maynard

Chesterfield, MI



01

KEY PRODUCTS & MATERIALS

Maynard Lockthread
ILT / SALT
Studs & Bolts
High Strength Aluminum



02

CORE PROCESSES

Warm Forming
Cold Forming
Thread Rolling
Heat Treatment
Inspection & Packing



03

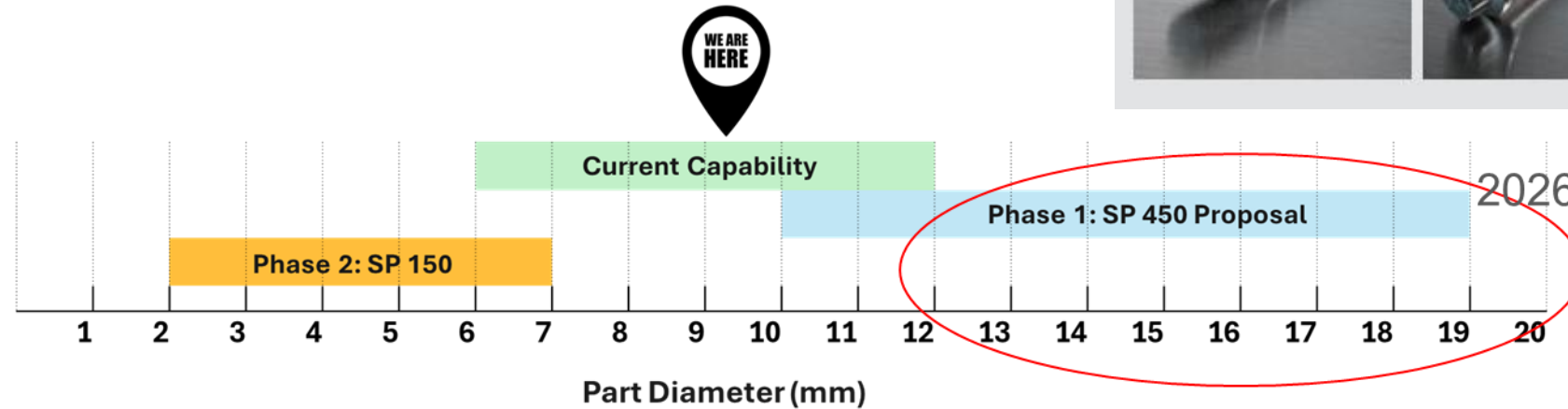
KEY INDUSTRIES

Automotive
Heavy Duty Truck
Heavy Duty Trailer
Industrial Solutions
Agriculture
Off-Highway
Military & Defense



Fasteners Capabilities

Phased Capability Expansion: M3 to M19



- Lockthread
- Studs
- Bolts
- T-Bolts

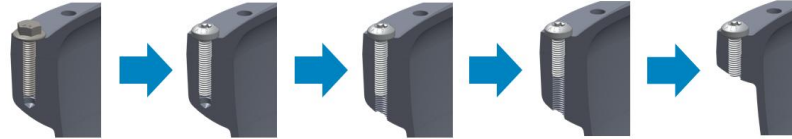


HIGH STRENGTH ALUMINUM FASTENERS (AL9)

ALUFORM USA
A RIBE & MACLEAN-FOGG COMPANY

- **WEIGHT REDUCTION**

Primary – 1/3 the weight of same size steel bolts.
Secondary – 50% less thread engagement allows shorter bolt and boss.



- **CLAMP LOAD**

Clamp load achievable through use of engineered joint design and installation strategies.

- **THERMAL STABILITY**

In aluminum and magnesium, similar coefficient of thermal expansion means no added stress to joint during thermal cycling.

- **CORROSION RESISTANCE**

Natural passivation acts as barrier to corrosion. In magnesium, similar galvanic properties mean no special coatings or isolators. Special coatings can prevent corrosion in harsh environments.

- **EV FRIENDLY**

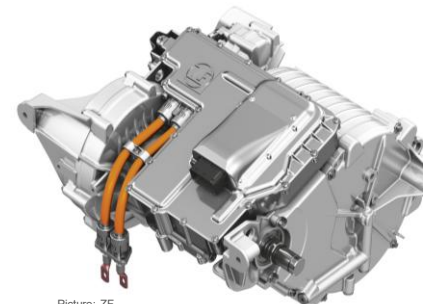
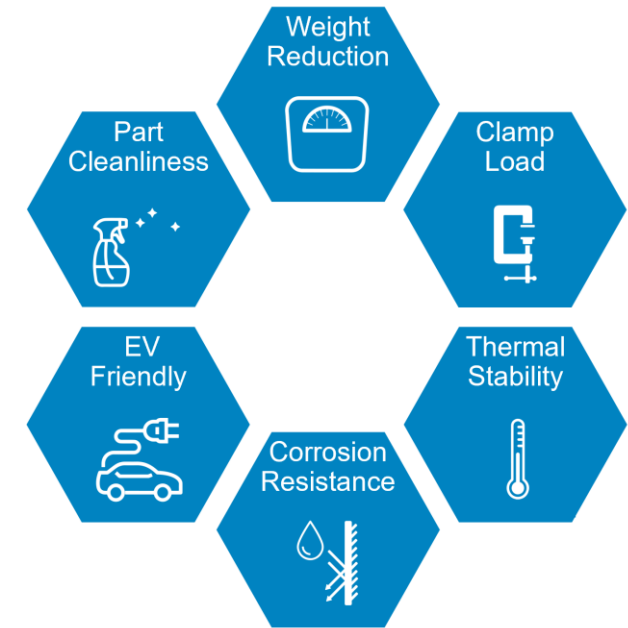
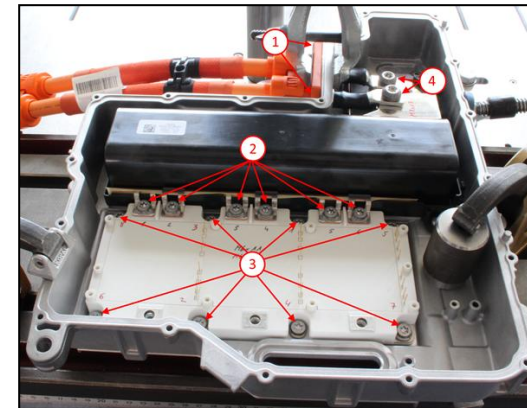
Conductive properties and light weight help optimize bolted electrical connections, including grounding.

- **PART CLEANLINESS**

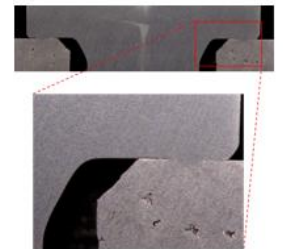
No heavy coatings keep contaminating dust and particles out of the final product.

- **INNOVATION**

Self-sealing, and thread forming options.



Picture: ZF



Farmington Hills

Farmington Hills, MI



01

KEY PRODUCTS

Wheel Fasteners
Wheel Nuts
Wheel Bolts
Security Fasteners

02

CORE PROCESSES

Cold Forming
Close Tolerance
Deep Drawing
Tapping
Automated Assembly

03

TRUSTED BY
THE WORLD'S
LEADING OEMs

Metform

Savanna, IL | Mt. Carroll, IL



01

KEY PRODUCTS

Transmission Components
Fasteners
Wheel Nuts
Special Formed Parts



02

CORE PROCESSES

Horizontal Hot Forging
CNC Machining
Thread Rolling / Tapping
Warm & Cold Forming
Secondary Operations
Heat Treating



03

KEY INDUSTRIES

Automotive
Heavy Duty Truck
Industrial Engine
Agriculture



MFCS – Traditional Transmission/Transaxle Expertise

- Transmission Planet/Pinion Gear and Sun Gear Blanks
 - #1 supplier in North America
 - > 65% share of all planetary pinion gear blanks.
 - > 35% share of all planetary sun gear blanks.
 - > 150M gears blanks/year
- Safety Critical Machined Components for Park Interlock Systems
 - #1 supplier in North America
 - > 3M Abutments/year
 - > 4M Shafts/year
- Transmission Valves
 - > 35M Valves/year



EQUIPMENT AND CORE PROCESSES

- Hot Forging
 - (1) Hatebur AMP50XL (max OD 105mm, 2.0 kg)
 - (4) Hatebur AMP30 (max OD 73mm, 0.7 kg)
 - (5) Hatebur AMP20 (max OD 40mm, 0.18 kg)
 - (1) Hatebur HM35 (max OD 75mm, 0.9 kg)
- Cold Forming
 - (9) National Machinery Cold Formers, including (7) 1250's
 - OD: 9mm to 51mm / Length: 9mm to 229mm
- BTB Rotary Transfer Machining (3)
 - OD: 12mm to 50mm / Length: 100mm
- Hydromat Rotary Transfer Machining (12)
 - OD: 3mm to 36mm / Length: 150mm
- Multi-Spindle Screw Machining - OD: 3mm to 87mm / Length: 200mm
- CNC Machining: Turning, Milling, Drilling, Broaching, Shaper Cutting, Skiving
- Heat Treat – Quench & Temper, Normalize / Isothermal Annealing
- Grinding: Profile/Center-less, In-Feed & Thru-Feed
- Honing
- Tapping and Thread Rolling
- Assembly & Automatic Inspection Systems

All rights reserved © 2024 MacLean-Fogg Component Solutions.



Saegertown

Saegertown, PA



01

KEY PRODUCTS

Transmission Components
Chassis Components
Appliance Couplings
Fire Safety Couplings
Cutter Bit Bodies
Industrial Fittings



02

CORE PROCESSES

Cold Forming
Precision Machining
Precision Threading
Heat Treat Capability
Automatic Inspection



03

KEY INDUSTRIES

Automotive
Heavy Duty Truck
Heavy Duty Trailer
Agriculture
Off-Highway
Military & Defense
Appliance
Hand Tool



Saegertown

Saegertown, PA

Industrial Components

Description:

- Water heater couplings, element hex plugs, road construction bits, mine construction bits, hand tools

Applications:

- Appliance, construction, road Industry

Operations:

- Cold Form, Turning / Drilling, Thread Cutting

Capability:

- 45 - 50mm



MacLean Master

Plymouth, MI



01

KEY PRODUCTS

Transmission Components
Driveline Components
Powertrain Components
Assemblies

02

CORE PROCESSES

Multi-Spindle Machining
Single-Spindle Machining
Grinding
Honing
Broaching

03

KEY INDUSTRIES

Automotive
Industrial
Off-Road

MacLean Master

Plymouth, MI



Transmission Components

Description:

- Transmission Valves, Sleeves and Assemblies

Application:

- Automatic Transmission Components

Operations:

- Multi-Spindle and Single-Spindle
- In-Feed and Thru-Feed Grinding
- CNC Turning
- Honing
- Ultrasonic Washing
- Automated Assembly & Inspection

Capability:

- O.D. maximum: 61mm
- O.D. minimum: 8.8mm
- Length maximum: 190mm
- Length minimum: 11.2mm

Curtis

Buffalo, NY | Mooresville, NC



01

KEY PRODUCTS

Gear Blanks
Transmission Components
Engine Components
Hydraulic Connectors
Fasteners

02

CORE PROCESSES

Multi-Spindle Machining
Rotary Transfer Machining
CNC Machining
Assembly

03

KEY INDUSTRIES

Automotive
Heavy Duty Truck
Off-Road

MACLEAN CURTIS

KEY PRODUCTS

- Transmission Components
- Engine Components
- Steering & Suspension Components
- Fasteners

EQUIPMENT AND CORE PROCESSES

- BTB Rotary Transfer Machining
 - Diameter: 12mm to 50mm
 - Length: 100mm
- Hydromat Rotary Transfer Machining
 - Diameter: 3mm to 36mm
 - Length: 150mm
- Multi-Spindle Screw Machining
 - Diameter: 3mm to 87mm
 - Length: 200mm
- CNC Machining
- Skiving
- Assembly



Engineered Plastics Company

Menomonee Falls, WI | Whitewater, WI



01

KEY PRODUCTS

Functional Engineered Plastics
Automotive Hood Leveling
Insert Molded Products
Molding & Assembly
Seals & Bumpers

02

CORE PROCESSES

Injection Molding
Insert Molding
Welding
Assembly

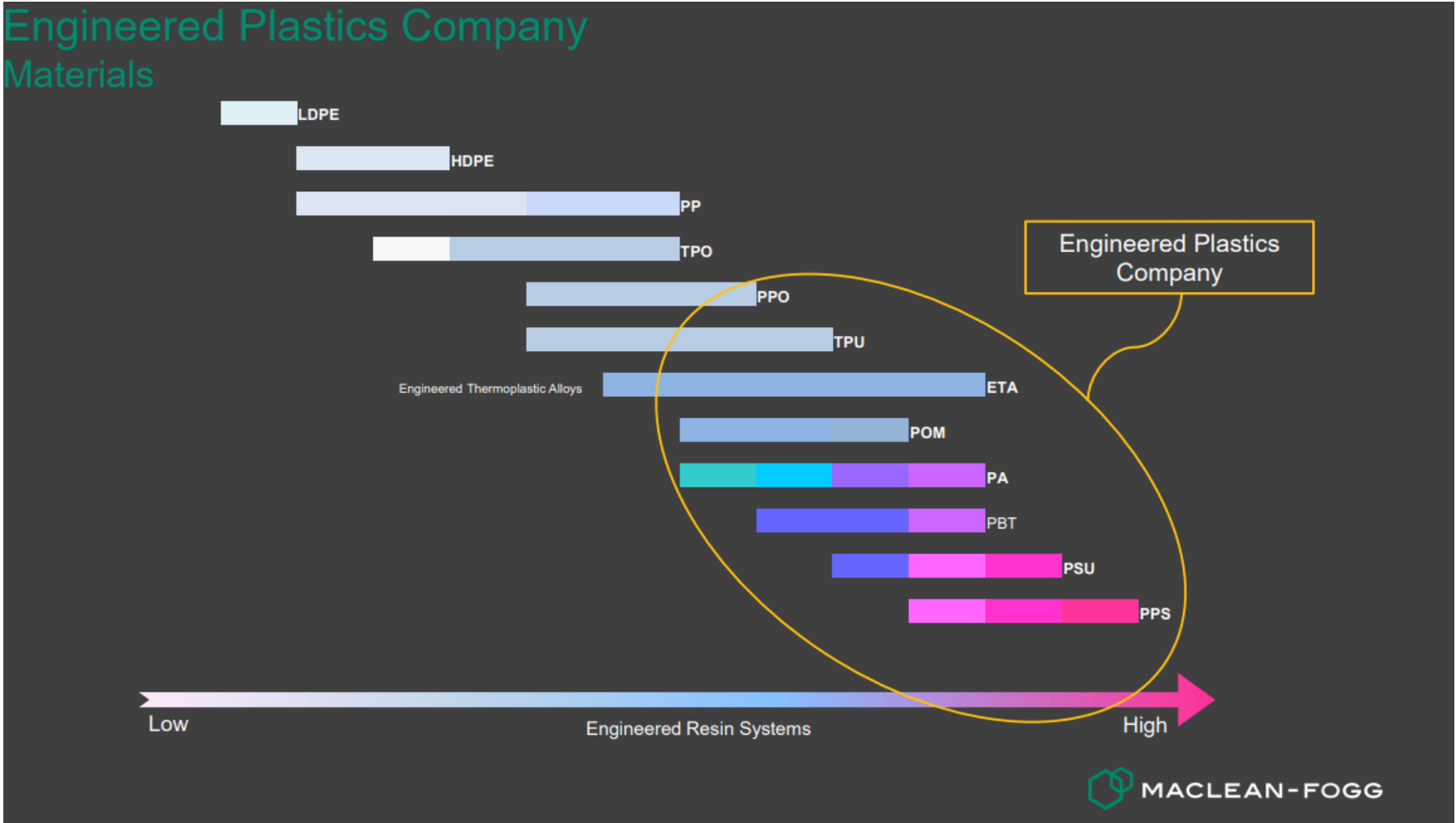
03

KEY INDUSTRIES

Automotive
Water Treatment
Heavy Duty Truck
Industrial Engine

Engineered Plastics Company

Menomonee Falls, WI | Whitewater, WI



We specialize in high-performance engineered polymers such as PPS, PSU, PBT, PA, POM, and engineered thermoplastic alloys. These materials offer excellent thermal, mechanical, and chemical resistance properties, ideal for demanding applications.

As a North American supplier, we provide faster lead times, reduced risk, and full USMCA compliance—ensuring stable, responsive, and cost-effective supply chain support.

© 2024 MacLean-Fogg Component Solutions.

Engineered Plastics Company

Menomonee Falls, WI | Whitewater, WI



MacLean Additive

Sterling Heights, MI



01

WHAT IS MACLEAN ADDITIVE?

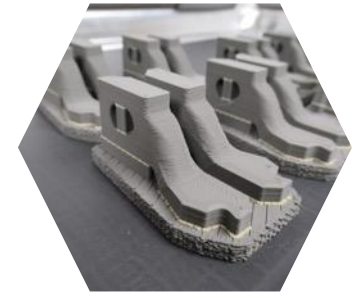
Provider of innovative and high-performance metal powders for 3D Printing / Additive Manufacturing primarily focused on tool steel alloys



02

CORE PROCESSES

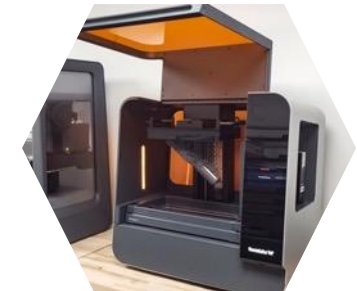
Innovative Steel Powders
Application Engineering Services
3-D Printed Tools
3-D Printed Parts



03

KEY INDUSTRIES

Tool and Die
Automotive
Industrial



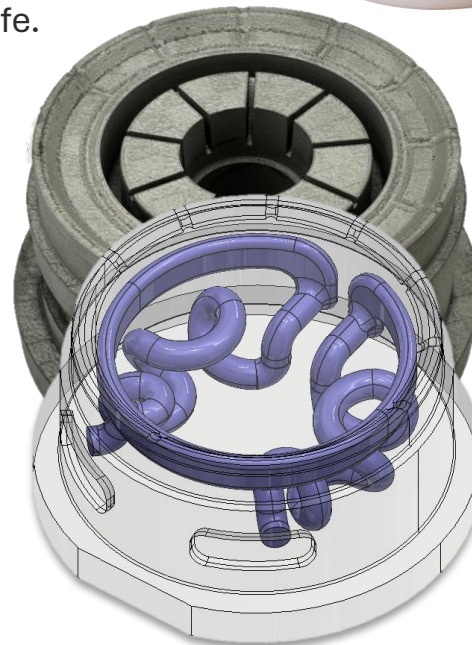
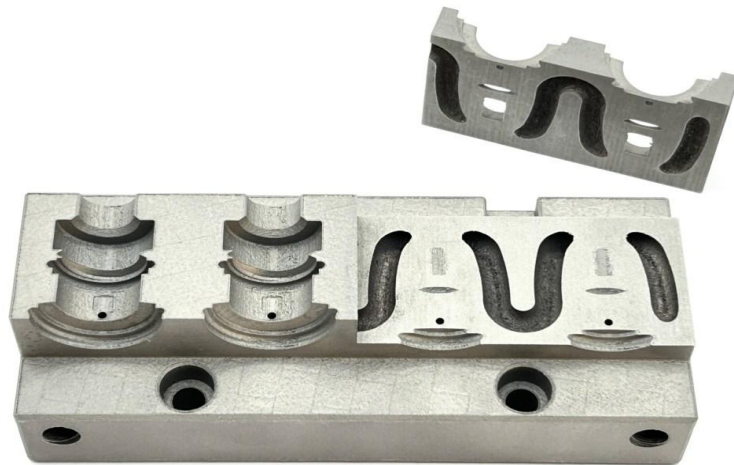
MacLean Additive

Sterling Heights, MI

[MacLean Additive - MacLean-Fogg Company](#)

- Revolutionizing Tooling with Proprietary L-40 Tool Steel Powder
- MacLean Additive is pushing the boundaries of manufacturing with advanced 3D printing solutions powered by our proprietary L-40 tool steel powder. Our expertise in Laser Powder Bed Fusion (LPBF) technology delivers cutting-edge solutions for tooling, fixtures, and hot and cold forming dies that outperform traditional methods.
- Featured Applications:
 - Fixtures & Jigs: Optimized for strength, precision, and durability.
 - Forging Dies & Tooling: High-impact resistance, longer wear life.
 - Die Casting: Limits soldering issues and extends tool life.

3D METAL PRINTING



Fastener Components



Engineered Components

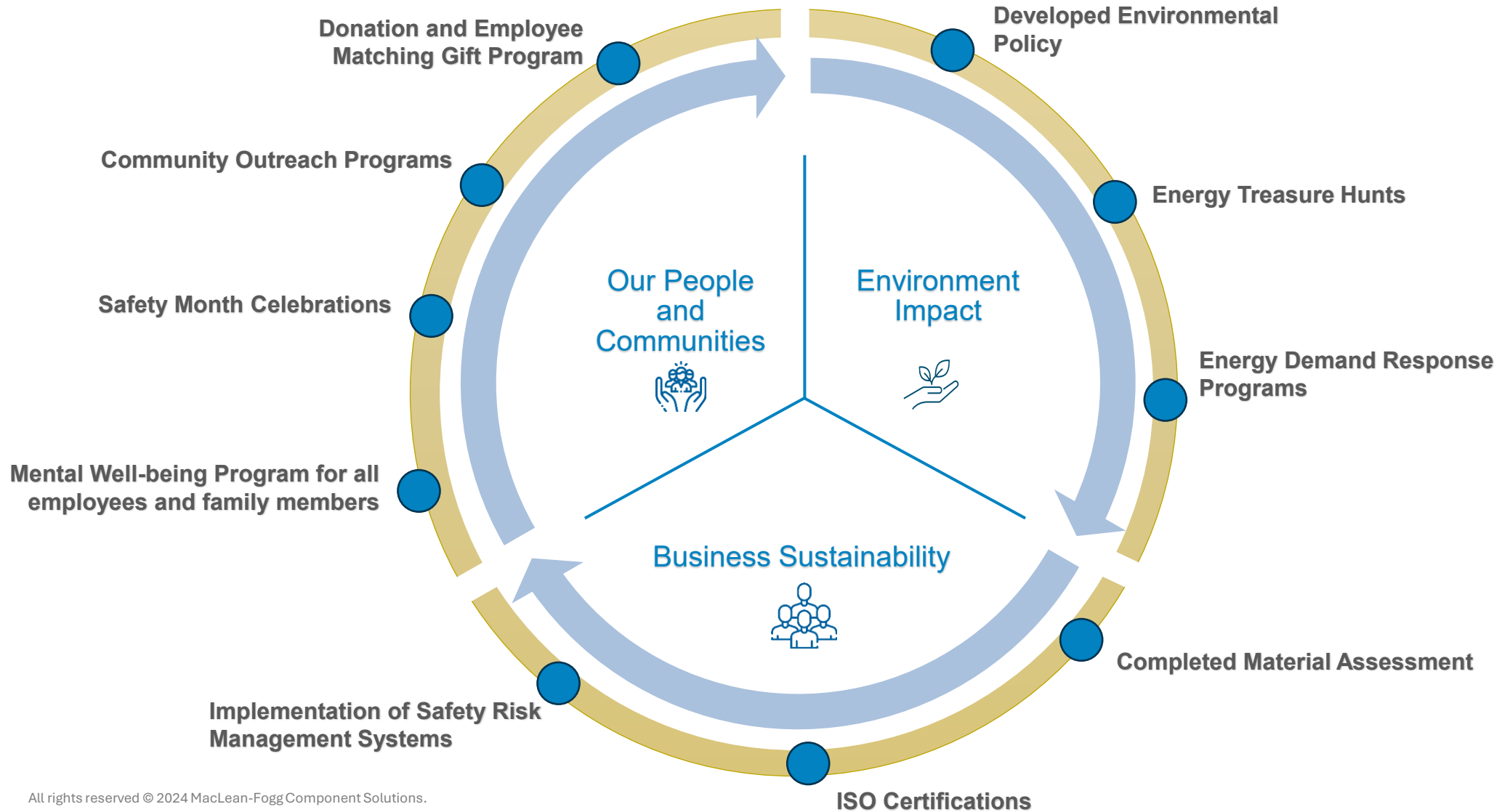


Engineered Plastics



Sustainability

What we are doing today





MacLean-Fogg
COMPONENT SOLUTIONS

Thank You

For more information, visit
macleanfoggcs.com

OZIEL HERNANDEZ

