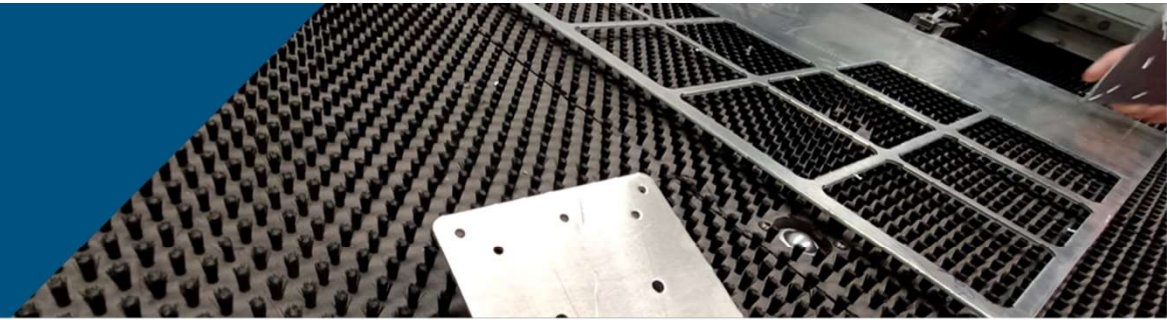




SHEET METAL CO.
RIPIPSA MANUFACTURING



RIPIPSA MANUFACTURING INTRODUCTION

Joint venture



49 (14 Staff + 35 Production)

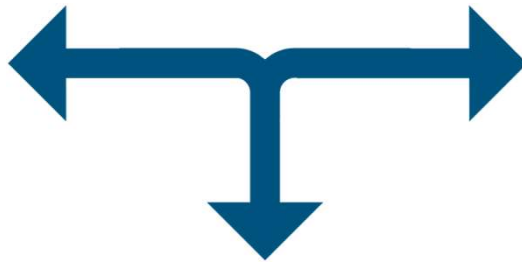
Punto Alto group



1.0K



+16



Chihuahua



4



+10



250

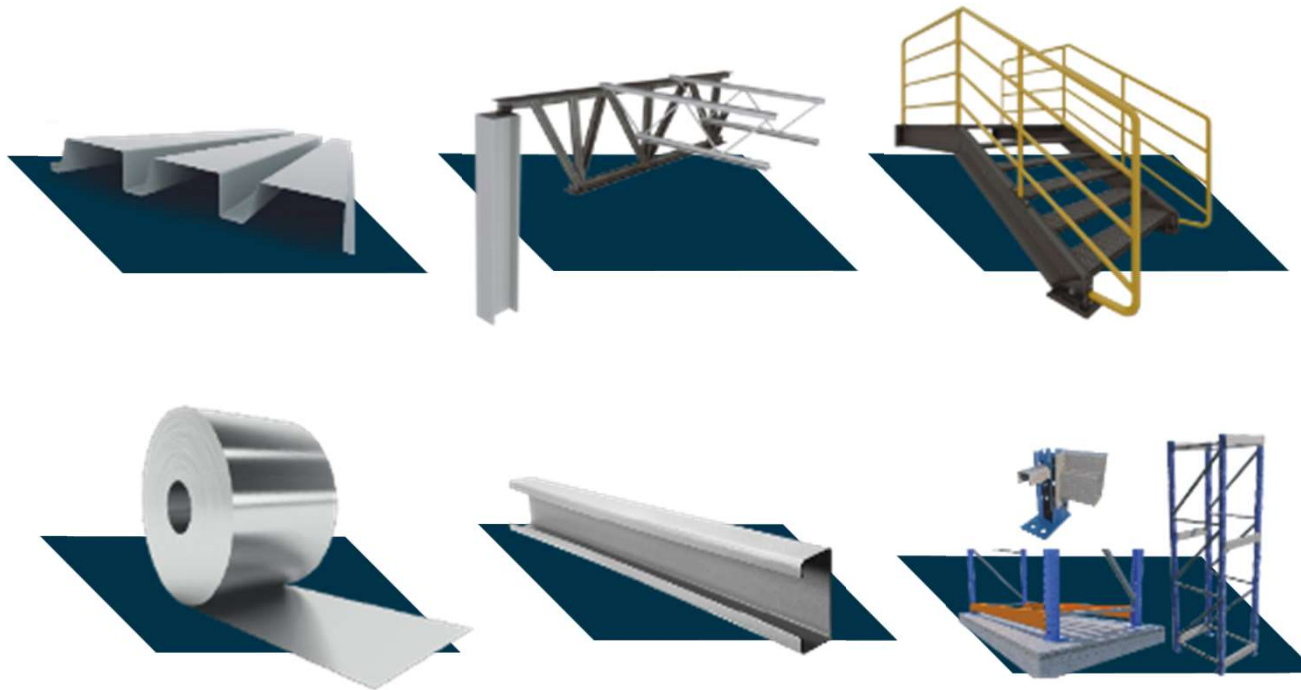


34

General information



Structural Steel:



Customers:



Certifications:



General information

FABLAB>>

Chihuahua

Capabilities:

Solutions for digitize and
prototype for new products



Customers:

southco®

EMERSON.

CONMED



General information



Capabilities:



Structural aluminum



Production lines



Collaborative robotics



Logistics

Certifications:

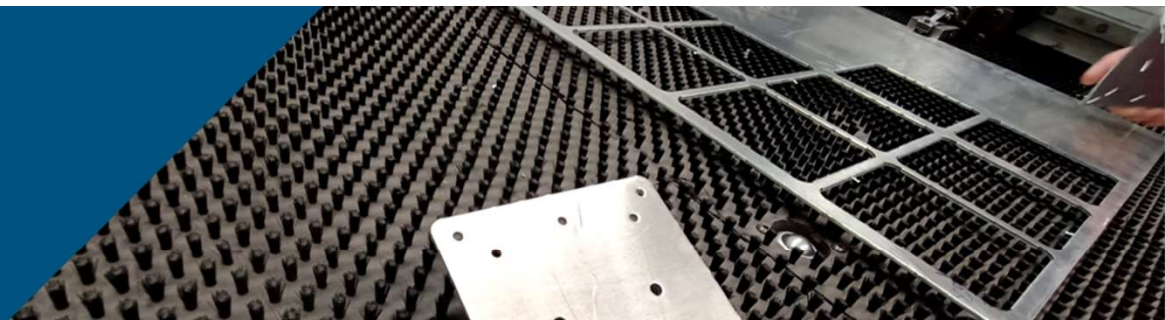


Customers:





SHEET METAL CO.
RIIPSA MANUFACTURING



New Business Unit



SHEET METAL CO.
RIIPSA MANUFACTURING

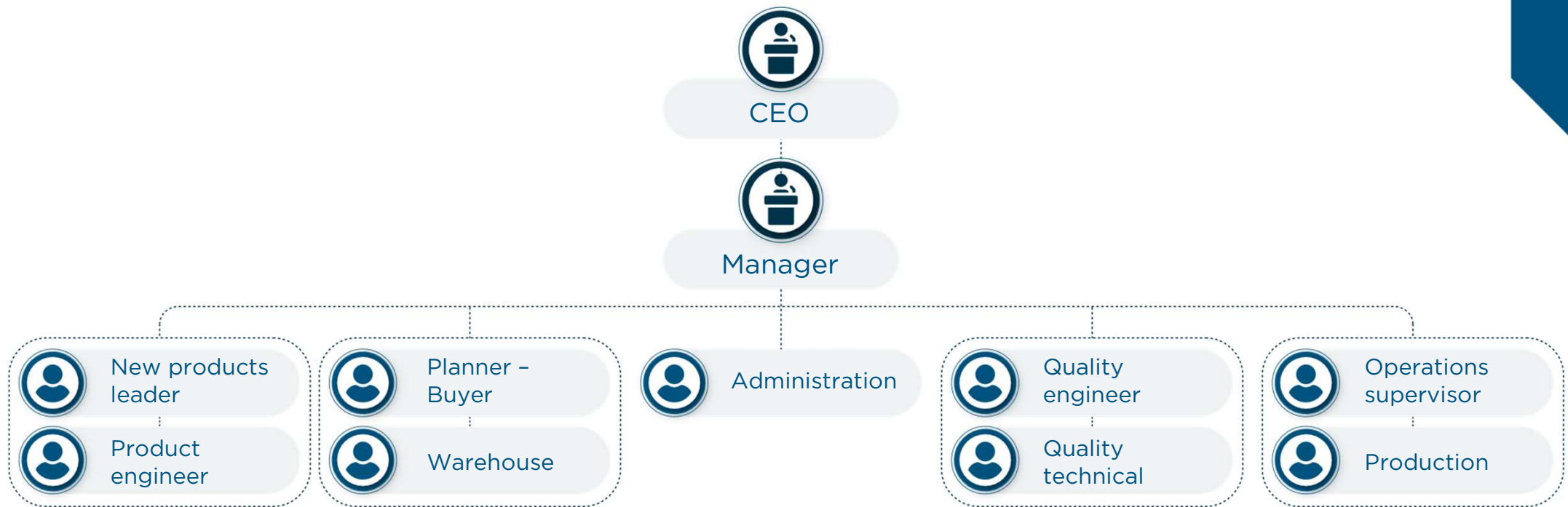
Key Partners



Certifications:



Organization Chart



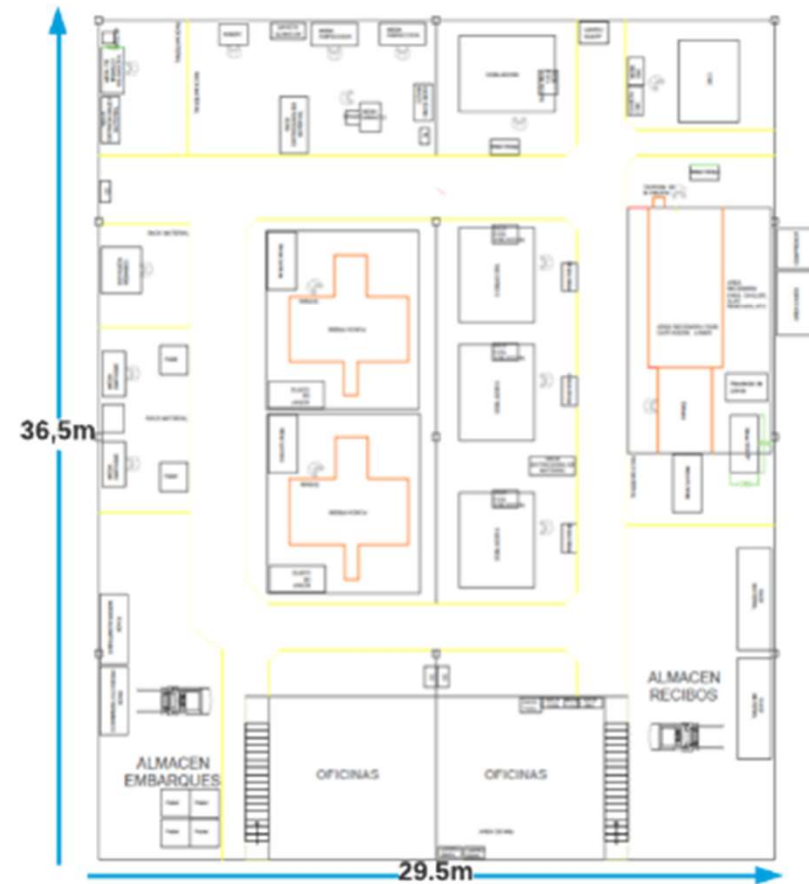
Commercial Contact:

Jazmín Juárez, New products leader: 614 176 39 80
Francisco Estrada; BU Manager: 614 479 56 78

Facility Layout

The facility has 1077m² of working area divided into two sections:

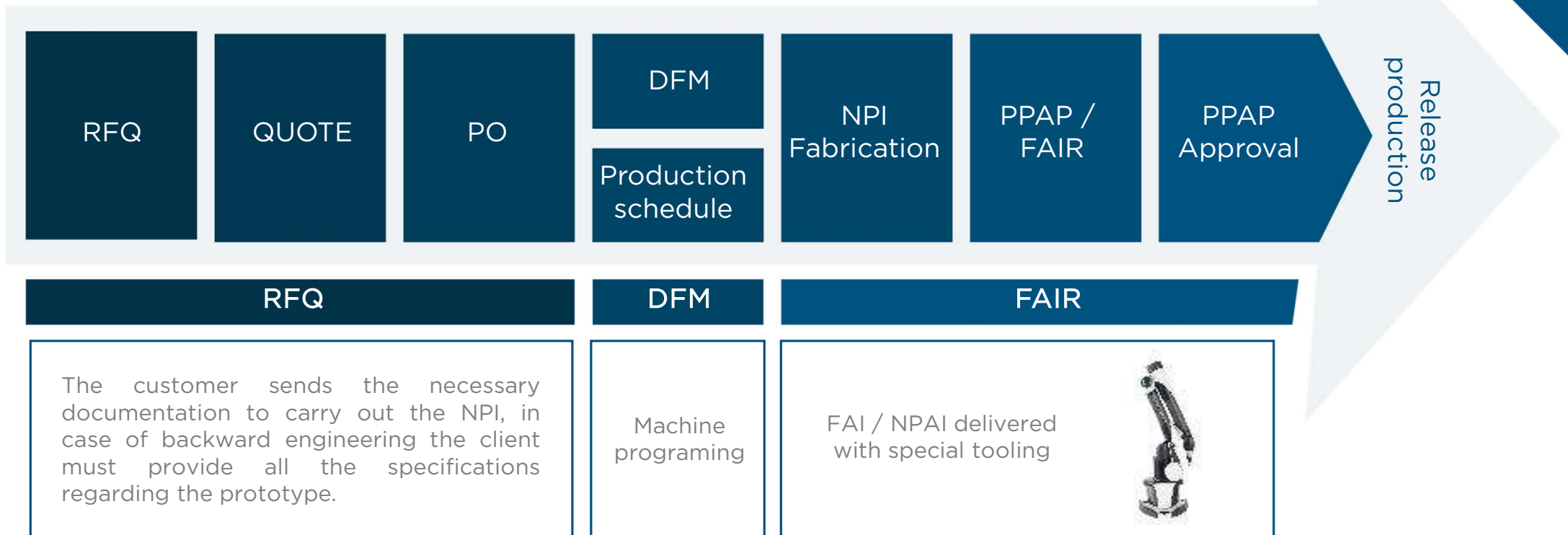
1. Manufacturing has 960 m²
2. Offices:
 - Ground floor 117 m²
 - Second floor 117 m²



Certifications



New product introduction process



General Capabilities (Core business)

Inside capabilities:

- Cutting
- Forming
- Bending
- Hardware insertion
- Die cut



Sheet Metal
Cutting Laser



Sheet Metal
Cutting



Machining

Partners:

- Welding
- Paint
- Metal finishing



Hardware Insertion



Inspection &
Backward
Engineering



Sheet Metal
Forming

General information

Current customers:

- Aerospace
- Automotive
- Electronic

Certification ISO 9001:2015

- Certification on Sep 2024

AS9100

- Certification on Feb 2025

ERP: Epicor

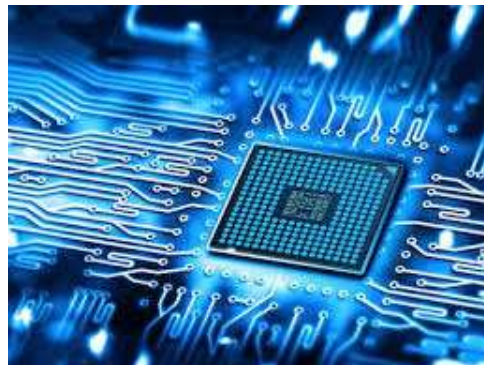
- MRP
- Production
- Quality
 - Traceability

Aerospace industry:

- Three new sites (customers)

Quality management system:

- MasterWeb



Capabilities examples



-Aluminum
-3 x 10 cm
-100 gm
-EAU: 6,000



-Cold rolled
-2 x 2 cm
-10 gm
-EAU: 34,000



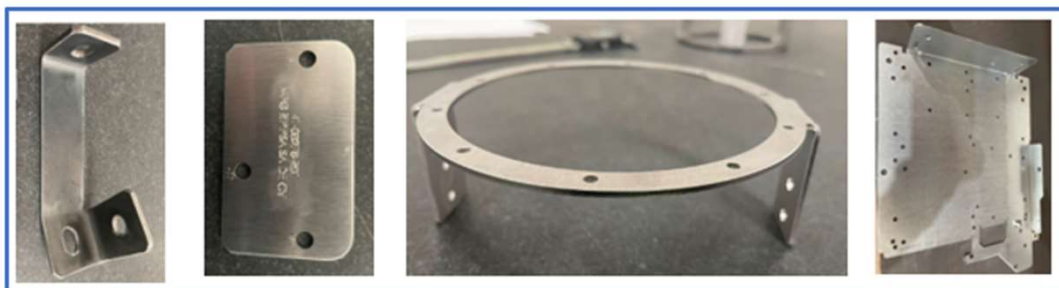
-Cold rolled
-15 x 20 cm
-500 gm
-EAU: 4,800



-ASTM A653
-50 x 10 cm
-600 gm
-EAU: 10,000



-Inconel
-5 x 10 cm
-100 gm
-EAU: 80,000



-Cold rolled
-Around 10 x 20 cm
-500 gm
-EAU: 960 each

Capability: Sheet Metal Cutting



Laser Sheet Metal Cutting

JFY laser cutting EFC 4020

Item	Specification Unit.
Sheet Cutting Size	3000×1500 mm
Stroke of X Axis	3000 mm
Stroke of Y Axis	1500 mm
Stroke of Z Axis	280 mm
Max. Feeding Speed	140 m/min
Cutting Accuracy	±0.1 mm/m
Rated Laser Power	4000 W
Stable Cutting Thickness	MildSteel From 0.6 to 19 mm
	Stainless Steel from 0.6 to 15 mm



Turret Sheet Metal Cutting

Punch Press LVD

Item	Specification
Tooling system	Trumpf® Style
Punch diameter Max	90mm
Number of tool positions	20
Max. Bending height	75mm
Number of tools	20-200
Working range	
X-travel	2590mm
Y-travel	1425mm
Axis Speed	
Simultaneous X-Y	128m/min
Repeatability	
Positioning accuracy	0.1mm/m
Cutting Thickness	from 0.6mm to 5mm
Press capacity	200Kn
Max sheet weight	230Kg
Maximum hit rate	
1mm pitch	880HPM
25mm pitch	505HPM



Capability: Sheet Metal Forming



Sheet Metal Forming

LVD Easy Form 135/30

Item	Specification
Force	1350 kN
Pressure	290 bar
Working lenght	3050 mm
distance between studs	2600 mm
Stroke	400 mm
Swan neck	400 mm
Table width	120 mm
Max load table	2000 kN/m
Working height	970 mm
Approach speed	180 mm/s
Working speed	22 mm/s
Return speed	200 mm/s
Motor	22 kW
Weight	10 Kg
Crowning	3 mm
Angle accuracy	±1° Degrees



* 2 available machines for work

Capability: Sheet Metal Machining



Sheet Metal Machining

DMU 50 Eco line (3+2 axes)

Item	Specification
Route (X / Y / Z)	500 mm
Spindle revolutions	8000 rpm
Feet rate	83 Nm
Power	13 Kw
Numbers of tools	16
Axis	3+2 (X/Y/Z/C/B)
Fast march	200 m/min
Max load in working	200 Kg
Rotative table "B" axis	-5° / 110° Degrees
Positioning accuracy	<8 Qm



Capability: Hardware Insertion



Hardware Insertion

WINMAN M618-MSPe Hydraulic Riveting Machine - 8T

Drive mode	Unit Value
Output pressure range	1-8 T
Deep throat	500 mm
Throat high	382 mm
Total stroke	110 mm
Pressure repetibility	±1%
Pressure holding time	1-5 s
Press down speed	65 mm/s
Auto feeding riveting	M3-M5
Manual feeding riveting	M6-M10
thickness	<0.8 mm
Rivet speed	2-3 (average speed) s



Capability: Puch Press



Punch Press

EW Blisco 18TR

Item	Specification
Capacity	18 T
Work Area	10x17 I
Engine	1.5 HP



Capability: Inspection & Backward Engineering



Inspection & Backward Engineering

Romer Absolute ARM 7525 SI

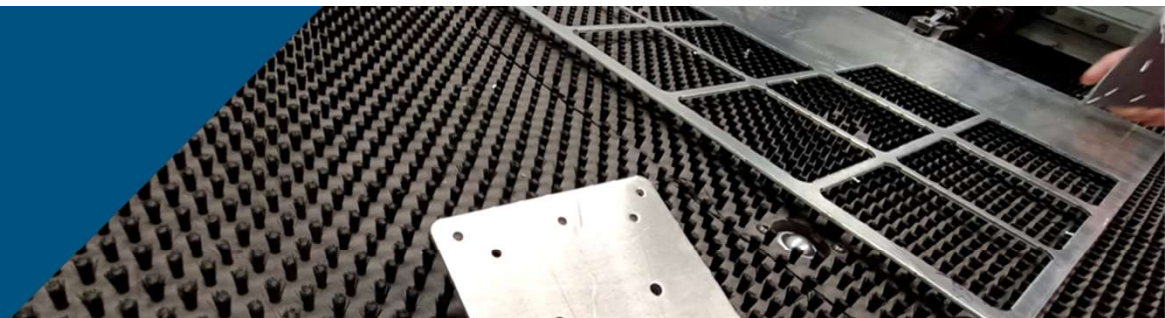
Item	Specification
Single point repetibility	.020 mm
Volumetric accuracy	.029 mm
Scanning accuracy	.063 mm
Working area	4.9 m ²



The Absolute Arm 7-Axis is a multifunctional measurement tool that delivers clear productivity improvements through increased usability and versatility.



SHEET METAL CO.
RIPIPSA MANUFACTURING



Privada Luis G Urbina #11546-2, complejo industrial Chihuahua, CP 31136



+52 (614) 424 01 66



<https://ripipsa.com/sheet-metal/>

