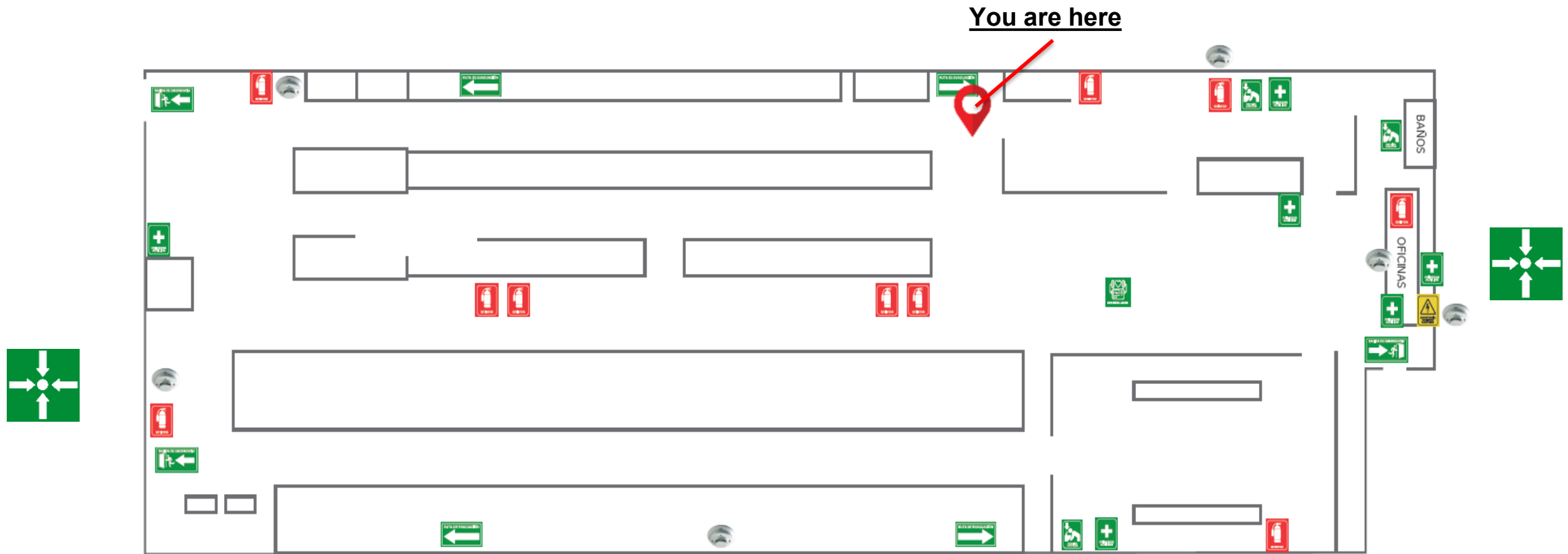




ASP QRO Services Overview

Safety Brief

783
Days without an LTI



ASP QRO Location

- Conveniently located in Kaizen City Industrial Park
- 2.85 Miles from QRO Main Terminal
- 30,000 Sqft Warehouse



ASP QRO Services

- FAA/EASA 145 Component Repair Station
- Third-Party Logistics (3PL)
- GSE Tooling Repair & Manufacturing
- Engine Stands Inspection and Repair
- Covers & Safety Kits Manufacturing
- Engineering Program Support
- Non-Destructive Inspection (NDI) & Testing (NDT)

Certifications



- FAA Certified - Oct 2024



- AS9100D – March 2025

FAA/EASA 145 Repair Station

Current 145 Ratings Scope (as of July 2025)

- Pilot and FO seats & Passenger Seats
- Pax Cabin Interiors
- Structures & Composites Shop
- Slides & Safety Equipment
- Paint Support
- Flight Controls



Repair Station Advantages

- 24/7 & AOG Support
- First Level Logistics & Management
- Fleet Engineering Support
- Third Party Maintenance Support
- Strategic locations to address capacity constraints



Third-Party Logistics (3PL)

- Asset Management Control & Reporting
- Dangerous Goods Handling & Transportation
- SCRAP Processing & Disposition
- 24/7 Worldwide Support
- Enterprise Resource Planning (ERP) Management
- Repack and Fulfillment Services

Future Capabilities

- AS9120 Update
- Ability to rapidly expand warehousing footprint



Certifications

- AS9100 D
- IATA - Certified
- IMMEX – In process

GSE Repair & Manufacturing

Our Design and Engineering teams have OEM experience in:

- Towbars
- Engine Tool, Stands & Pedestal Inspection & Repair
- Test Fixtures

Advantages:

- Capable of working wide range of high-quality materials
- Large Network of Fabrication and Metrology Partners
- Established quality control & quality systems management
- Strategically located to Queretaro International Airport
- B2B, B2C worldwide logistic and support



Fabrication and Metrology Network Partners

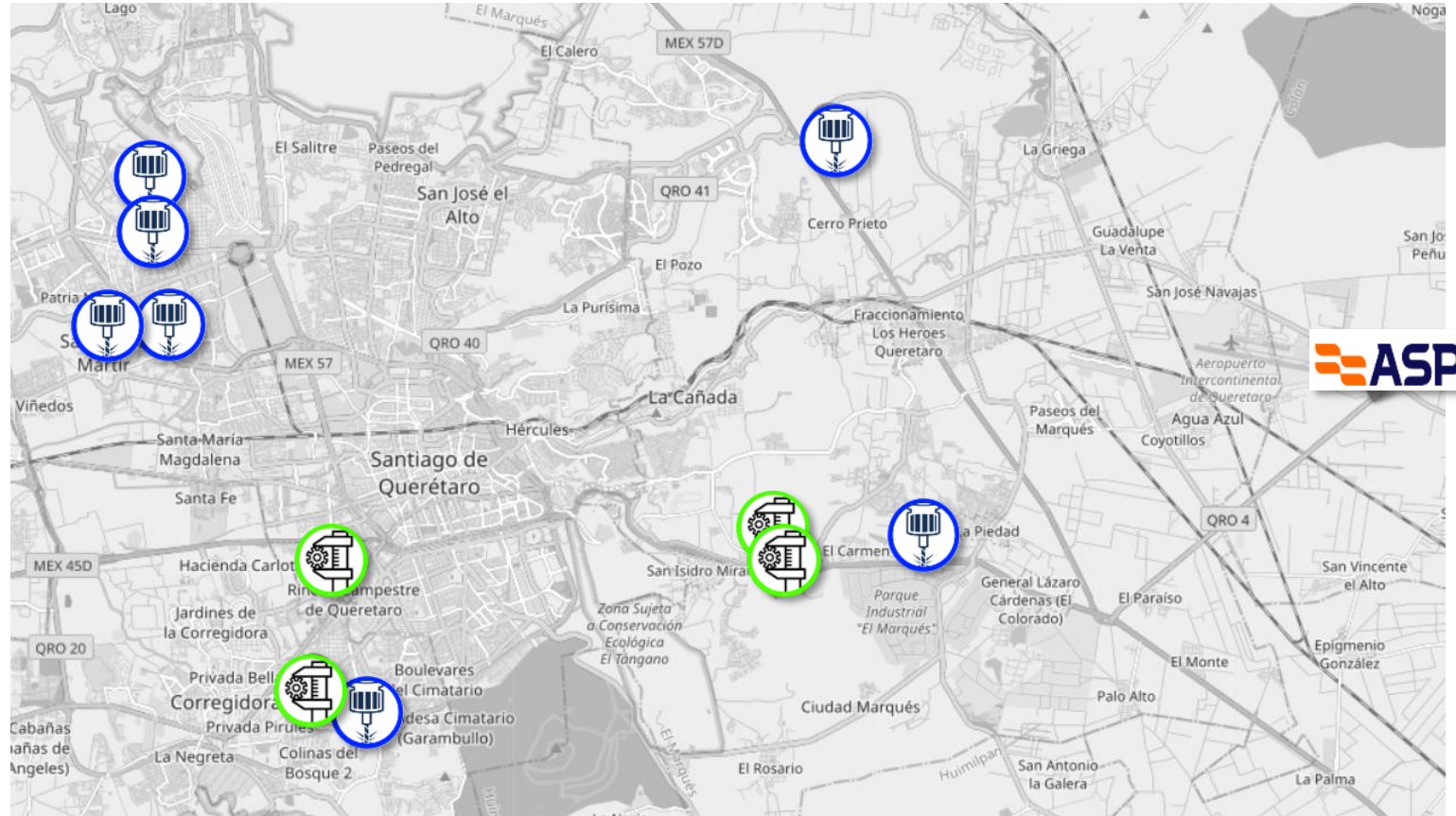
ASP leverages a strong network of local partners to deliver full capabilities on-demand. Multiple partners enables ASP to level capacity and ensures competitive costs.



- ❑ Precision Machining
- ❑ Certified Welding
- ❑ Metal Forming
- ❑ Water Jet, Laser, and Plasma Cutting
- ❑ Heat Treatment and Surface Coating



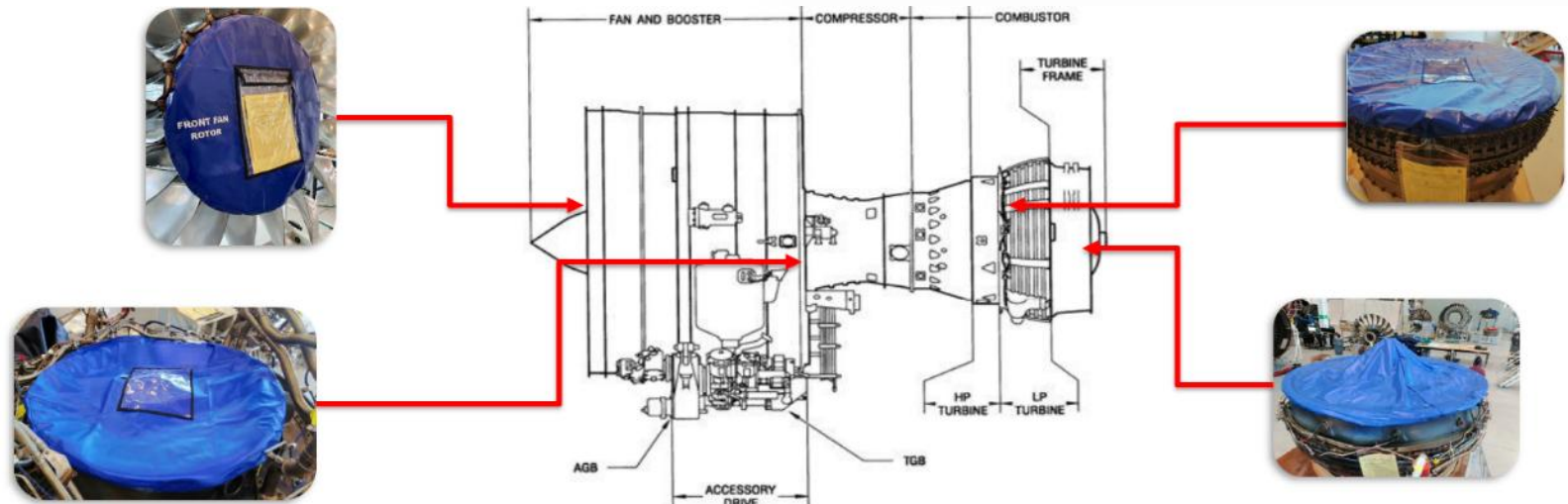
- ❑ CMM - Fixed and Portable
- ❑ Traceable Calibration
- ❑ Functional Testing – Load, Temp, Pressure, Flow



Covers & Safety Kits

We are committed to helping our customers to protect their equipment by designing and manufacturing:

- GSE Protective covers
- Engine module covers
 - CFM, P&W and Rolls-Royce
- Preservation kits
 - Antennas, doors, tires, etc.



Engineering Program Support

- SB & AD Management
- Compliance Systems & Records
- Maintenance Programs & Task Cards
- Technical Publications
- Fleet Engineering
- Maintenance Planning & Execution
- Reliability
- Partnership with local Aero Tech University

OPERATIONS



OEM EXPERIENCE



AIRBUS

BOMBARDIER

Beechcraft



MD
HELICOPTERS™

Engineering Advantages

- Technical Records Auditors
- Experienced engineers with a wide range of skills.
- Regulatory Compliance Authoring
- MRO support
- Flexible Costs
- On-Demand Solutions



Non-Destructive Testing

As a certified **FAA Part 145 Repair Station** and **AS9100D** quality certified organization, we ensure the reliability and compliance of critical components and structures.

- Penetrant Testing (PT)
- Eddy Current Testing (ET)
- Magnetic Particle Testing (MT)
- Ultrasonic Testing (UT)
- Radiography Testing (RT)
- Infrared Thermography Testing (IRT)
- Training (tech manuals, equipment, materials, inspection)



ASP Footprint Expansion

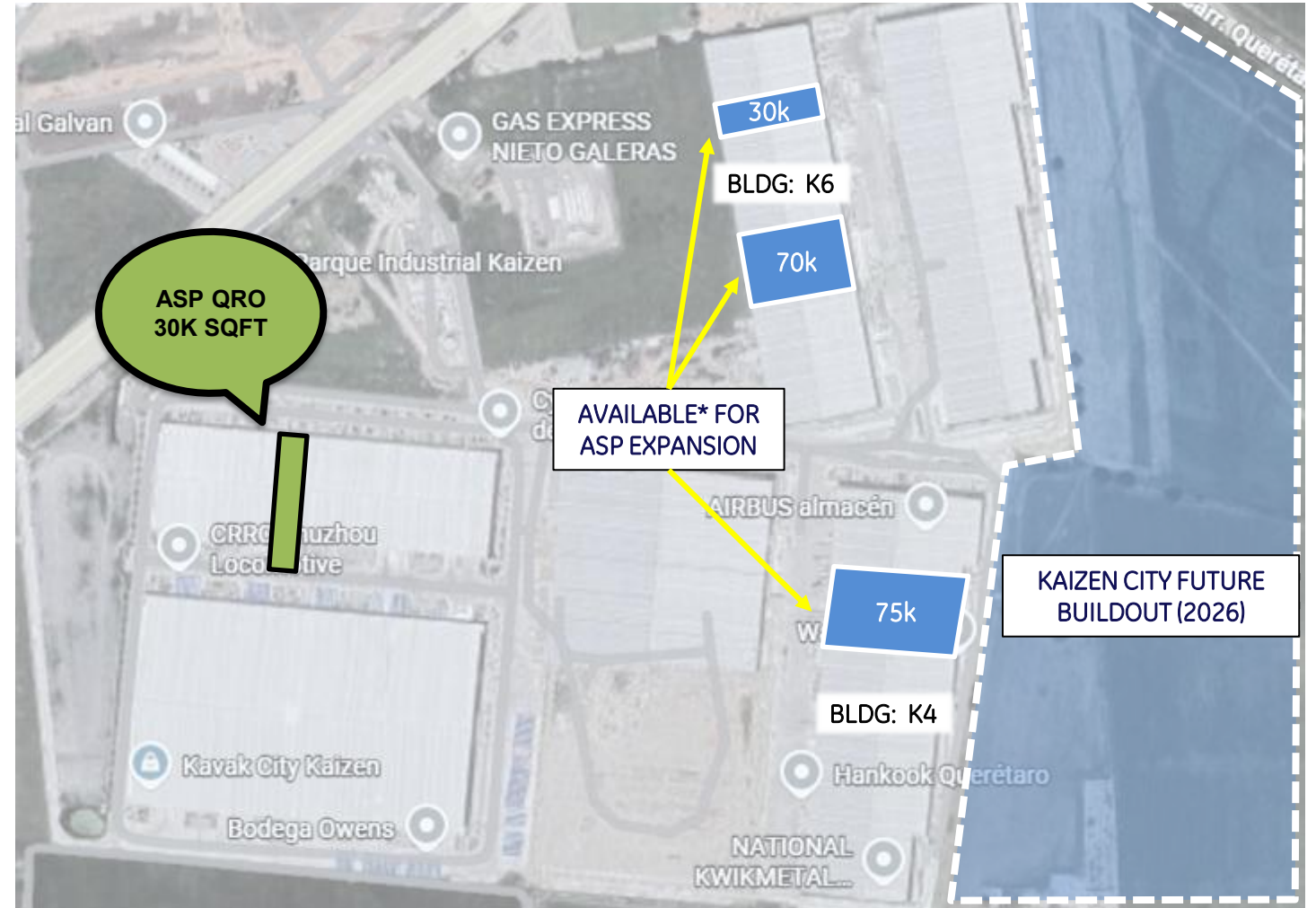
ASP eyeing expansion to 90k sqft

- 30k sqft current
- Can relocate within weeks within current lease terms

Illustrative Breakdown:

- 30k Repair Station
- 30k Interiors Business / Warehouse
- 30k Fabrication, Repair, Inspection

90k Total Sqft





Thank you!