



SUPERIOR INDUSTRIES

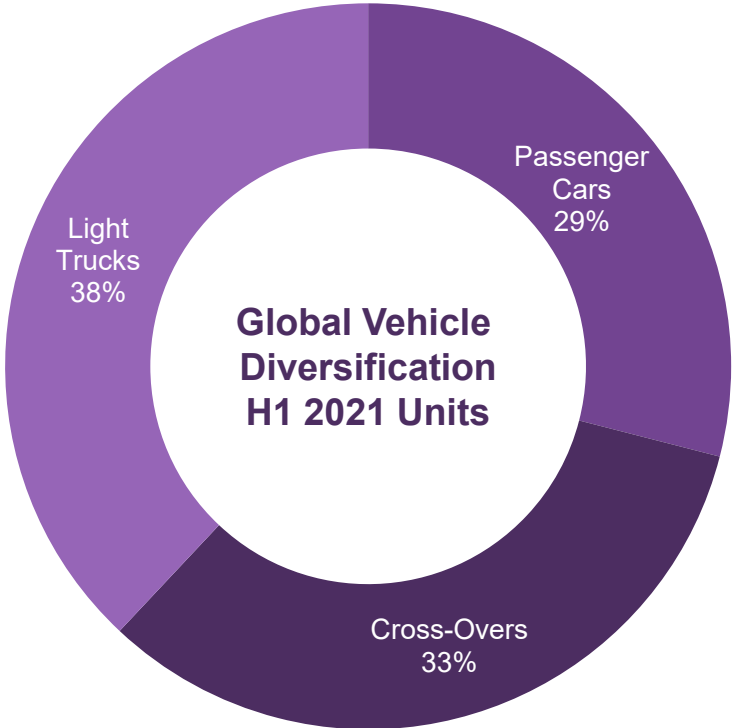
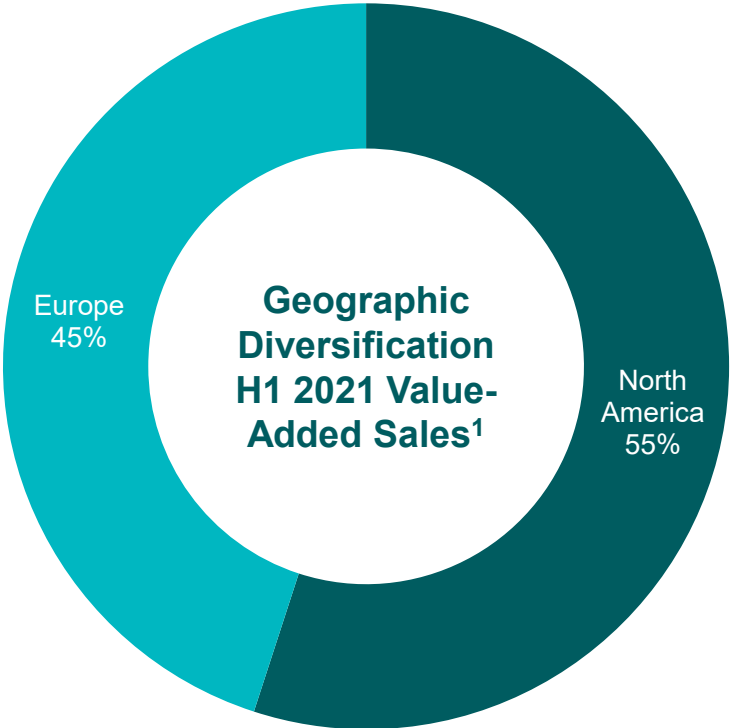
Reinventing the Wheel

Our Mission

We deliver innovative wheel solutions that enhance value for our customer's products and our stakeholders.



Geographic and Vehicle Diversification



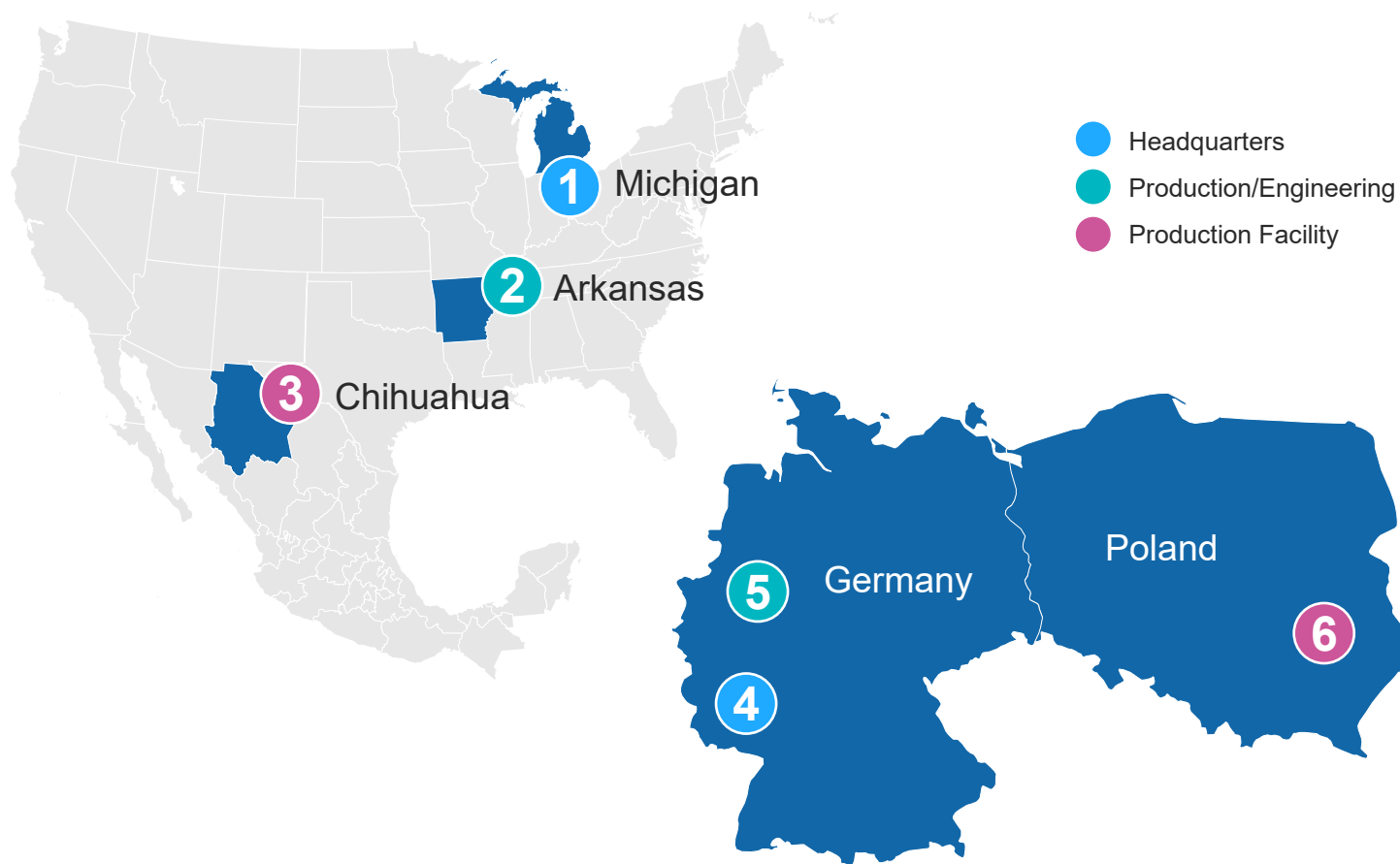
1) Value-Added Sales is a non-GAAP financial measure; see page 2 for definitions and the appendix for reconciliation to the most comparable GAAP measure

Regionally Diverse
Business Mitigates Risk

Portfolio Serves All Three
Vehicle Segments

H1 2021	Crossovers	Light Trucks	Passenger Cars
North America	19%	67%	14%
Europe	52%	0%	48%

Our Locations



- USA**
 - 1 **Southfield, Mi**
 - Corporate Headquarters
 - 2 **Fayetteville, Ar**
 - R&D and Customer Center
- MEXICO**
 - 3 **Chihuahua**
 - 4 Plants
 - Shared Services Center
- GERMANY**
 - 4 **Bad Dürkheim**
 - European Headquarters
 - Logistic Center (Aftermarket)
 - 5 **Werdohl / Lüdenscheid**
 - Production
 - R&D and Customer Center
- POLAND**
 - 6 **Stalowa Wola**
 - 3 Plants
 - Tool Shop

ESG & Sustainability Initiative



Superior is committed to global ESG initiatives and specifically CO₂ – Neutral products for the future

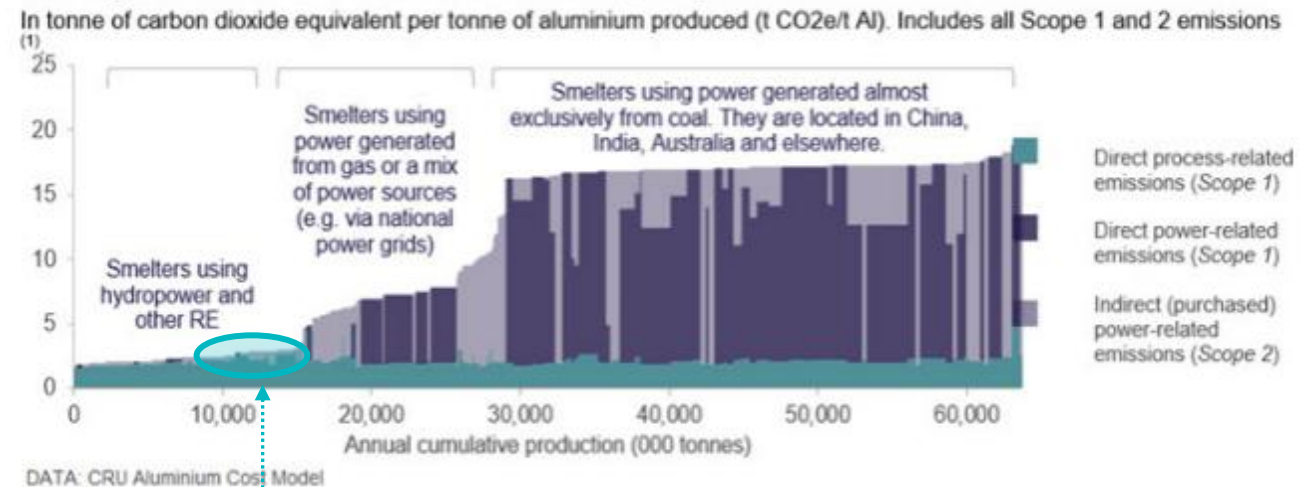
We are committed to environmental stewardship. As a company, we ensure that our employees recognize that they are an essential part of the program and have specific roles and responsibilities to support our sustainability efforts.

The foundation of Superior's Environmental Management System (EMS) is built upon a commitment to continuous improvement, pollution prevention and compliance with all relevant federal, state and local environmental regulations, certifications and standards.

EcoVadis
Sustainability
Reporting



Primary aluminium carbon emissions curve, Scope 1 and 2



Driving Towards Carbon neutral future:

- Superior global aluminum supply average of 4.6 Ton CO₂ / Ton of Aluminum is 60% below Industry Average of 12 Ton* (Scope 1 & 2)
- Secured substantial supply of 'Green' renewable electricity for NA & EU operations (Solar & Wind)
- Committed to recycling initiatives



Differentiated Product Portfolio

Expanding Product Portfolio

New customer wins resulting from growth of product line



Recent Awards & Certifications

PACE award finalist for PVD wheels as an environmentally friendly finish

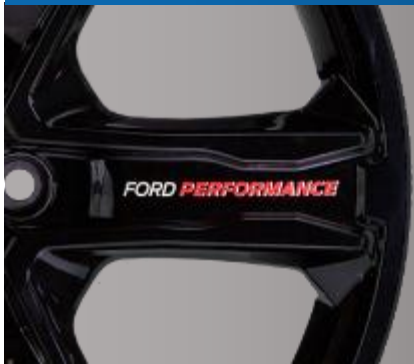


Custom Finish

Launched Superior's first in-house paint masking program on 2021 Chevy Silverado

Light weighting Technology

Successful launch of light-weighting technology on high performance platform



Deco Tech™

Developed and launched wheels for Ford Performance with patent pending application technology

Physical Vapor Deposition

Received global recognition award from Ford for successful launch of PVD & 2021 PACE Award Finalist





Our Products

Production Wheel Finishes

Fully Painted



Bright Machined/
Diamond Cut



Ultra Bright
Machined (NA)



Premium
Painted



Matte
Finish



Polished
(NA)



Bi-Color
(NA)



PVD
(NA)



Laser
Etching



Pad Printing
(EU / NA)



DecoTech™
(NA/AM)



5-Axis Milling
(NA)

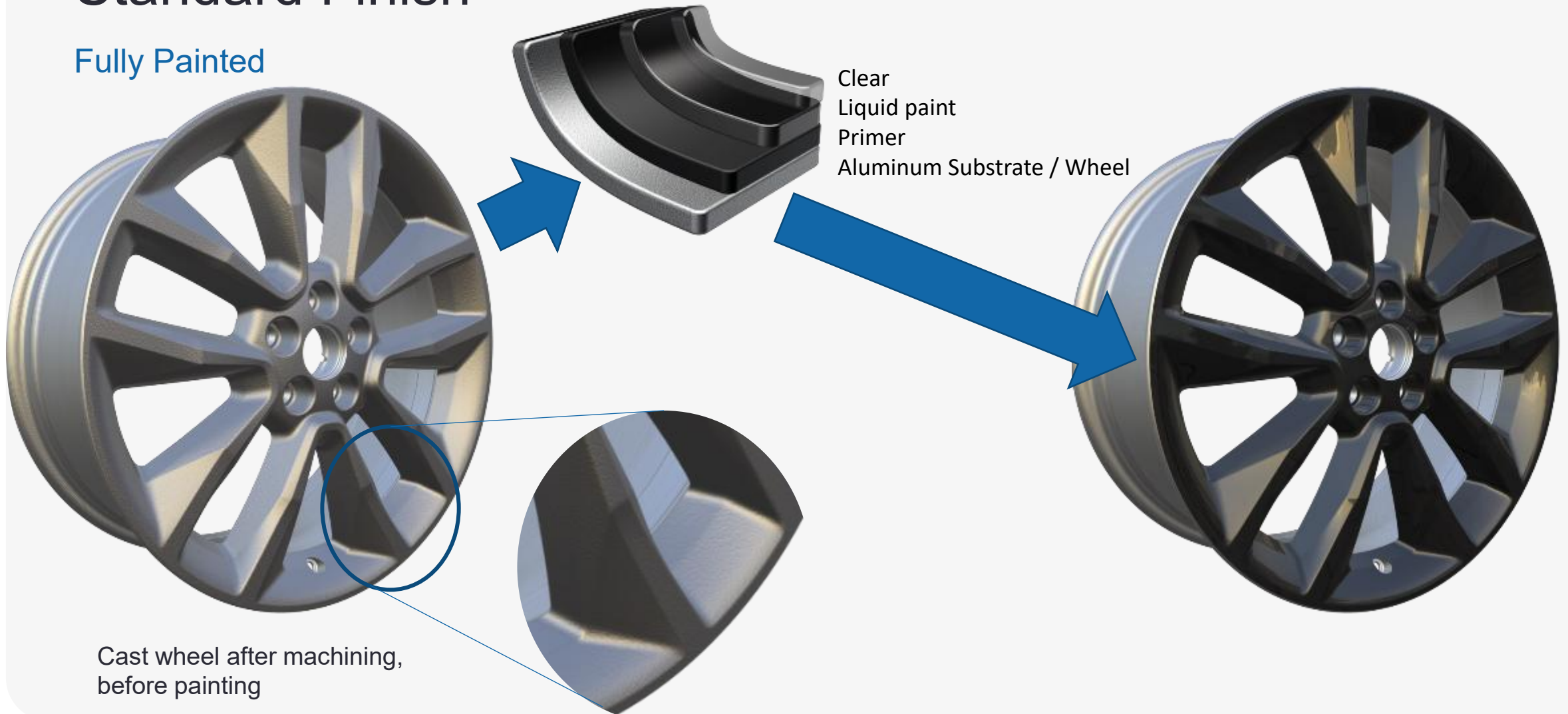


Aero Insert



Standard Finish

Fully Painted



Standard Finish

Bright Machined / Painted



Cast wheel after machining,
before painting



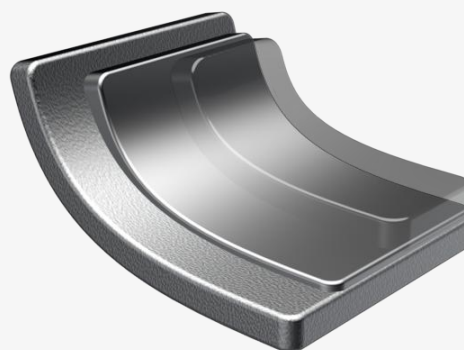
- The wheel is fully painted then machined before, clear coat to remove the paint from the face.
- Wheel is then fully clear coated to protect both machined face and painted surfaces

Standard Finish

Polished



Cast wheel after machining,
before Polishing



Clear
Aluminum Substrate / Wheel



Special Finish Options

Pad Printing



- Application of colored ink logos or graphics onto the surface of the wheel underneath the clear coat layer



Special Finish Options

Physical Vapor Deposition (PVD)



F150 Production Wheel

- Dedicated PVD facility in Chihuahua, Mexico
- Automated wheel brushing facility constructed to support PVD plant
- Fully automated production in PVD facility
- Production launch of P552 F150 wheel in Q4 2019. P702 F150 currently in production. MY24 P702 PVD freshening wheel awarded
- Size Capability: up to 24" Wheel
- 1 million wheels/year capacity



Superior PVD Facility

Special Finish Options

PVD Finish Options

Development in process on the following special PVD finish options:

- Dark PVD – tinted powder finish provides extreme dark color position
- Bright machined PVD (with bright or dark pockets)
- Various tinted PVD colors
- Matte finish PVD
- PVD with colored spokes
- Decorative graphics (laser etching, Deco Tech™ emblems)



Dark PVD



Bright Machined PVD



'Champagne' Tint PVD
with Matte Clear



Shadow Chrome PVD
with Black Spokes



Bright Chrome PVD
with Deco Tech™

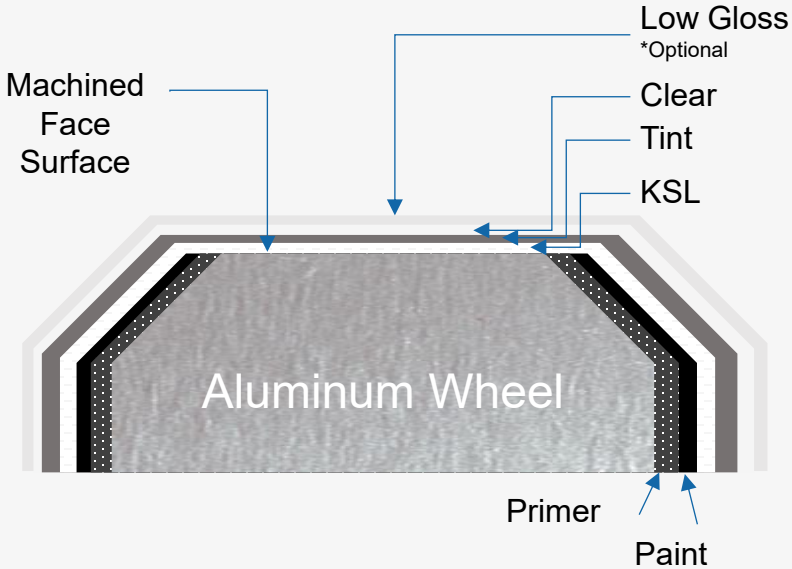
Special Finish Options

Tinted Clear Coat- Machined Face Wheel



Tint + Matte Clear

Tinted appearance over a machined face is accomplished by using a tinted liquid translucent coat sandwiched between a layer of KSL (an adhesion promoter) and an acrylic powder clear coat



Special Finish Options

Matte Finish



Matte Finish:

- 4-layer process with matte liquid clear coat provides outstanding appearance and performance
- 10, 20 and 50 gloss levels validated
- Multiple programs in production at Superior since Q3 2019



- Low Gloss Liquid
- Powder Clear Coat
- Liquid Paint
- Powder Primer
- Aluminum Wheel

Special Finish Options

Deco Tech™

Deco Tech™ is a high-performance decorative adhesive decal sandwiched between the base paint and clear coat layers.

Deco Tech™ allows for specialized wheel finishing graphics that have not been available before:

- Colors are limitless
- Texture can be added
- Brushed metal look can be offered
- Fine detail is achievable

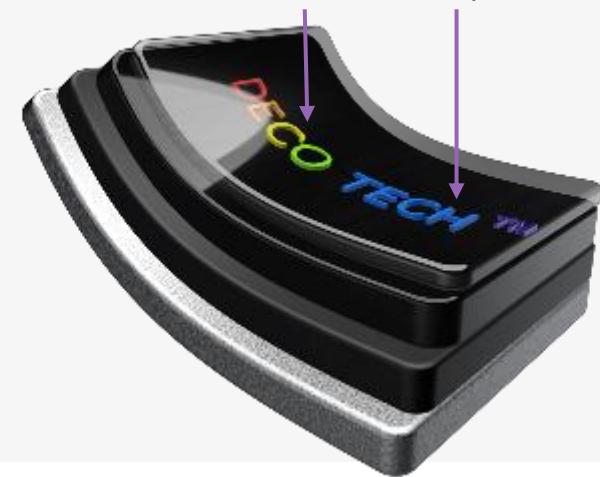


2020 Limited Production



Deco Tech™ debut at the 2019 SEMA Ford Booth

Deco Tech™ Encapsulated in Clear Coat



- Powder Clear Coat
- Liquid Paint
- Powder Primer
- Aluminum Wheel

Special Finish Options

Multi-Color Finishes



- Paint masking offers the capability for multiple paint colors on one wheel style and painting over polished surfaces
- Popularity increasing in North American market



Special Finish Options

Laser Etching



Etch through paint to
aluminum surface

- State of the art laser etching equipment in Chihuahua Plant 15 facility
- Multiple different finish options available as shown
- First production program launched in Q4 2019- C8 Corvette



Etch through paint to primer
surface-styling feature



Etch through paint to
primer surface- logo



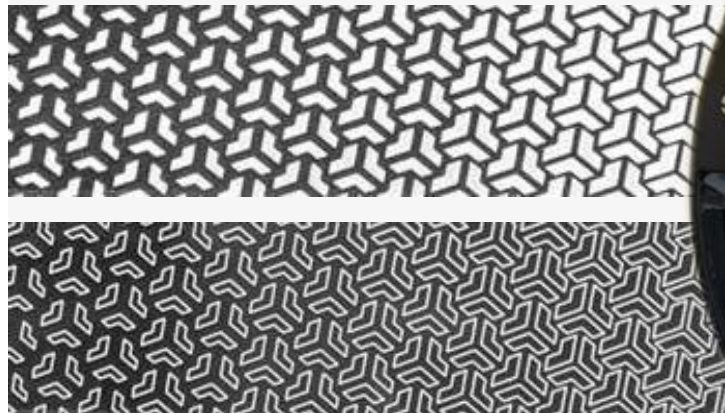
Etch onto aluminum surface

Special Finish Options

Laser Etching – Full-face Geometric Pattern



- Complex patterns achievable on painted or bright aluminum surfaces via laser etching



Finish Variants

- Taking advantage of Superior Global market position and working with our talented team of engineers and designers many different styles and looks can be achieved.
- With the vast finishing capabilities Superior offers. Many different wheel variants can be achieved on the same casting allowing for a personalized looks for varying trim packages.



Performance Driven Styling- *Aero Wheel*

- Thin-casting section design and AluLite™ process allows for aerodynamic performance and styling
- DecoTech™, pad printing and laser etching create unique design opportunities on face of wheel



We deliver innovative wheel solutions that enhance value for our customers' products and our stakeholders.



Confidentiality Notice/ Disclaimer

The content in this presentation is intended for discussion purposes only with Superior Industries International, Inc. Recipients do not have permission to copy, communicate, or otherwise distribute this presentation or the information contained herein.

This presentation contains statements that are forward-looking statements within the meaning of the Private Securities Litigation Reform Act of 1995. Forward-looking statements include all statements that do not relate solely to historical or current facts and can generally be identified by the use of future dates or words such as "may," "should," "could," "will," "expects," "seeks to," "anticipates," "plans," "believes," "estimates," "intends," "predicts," "projects," "potential" or "continue" or the negative of such terms and other comparable terminology. These statements also include, but are not limited to, the companies' production plans, product capabilities,

technology plans, and expansion opportunities and are based on current expectations, estimates, and projections about the companies' businesses based, in part, on assumptions made by management. These statements are not guarantees of future performance and involve risks, uncertainties and assumptions that are difficult to predict. Therefore, actual outcomes and results may differ materially from what is expressed or forecasted in such forward-looking statements due to numerous factors, risks, and uncertainties discussed in the Superior Industries International, Inc.'s Securities and Exchange Commission filings and reports, including the Annual Report on

Form 10-K for the year-ended December 31, 2017, Quarterly Reports on Form 10-Q and other reports from time to time filed with the Securities and Exchange Commission. You are cautioned not to unduly rely on such forward looking statements when evaluating the information included in this presentation. Such forward-looking statements speak only as of the date on which they are made and the companies do not undertake any obligation to update any forward-looking statement to reflect events or circumstances after the date of this presentation.