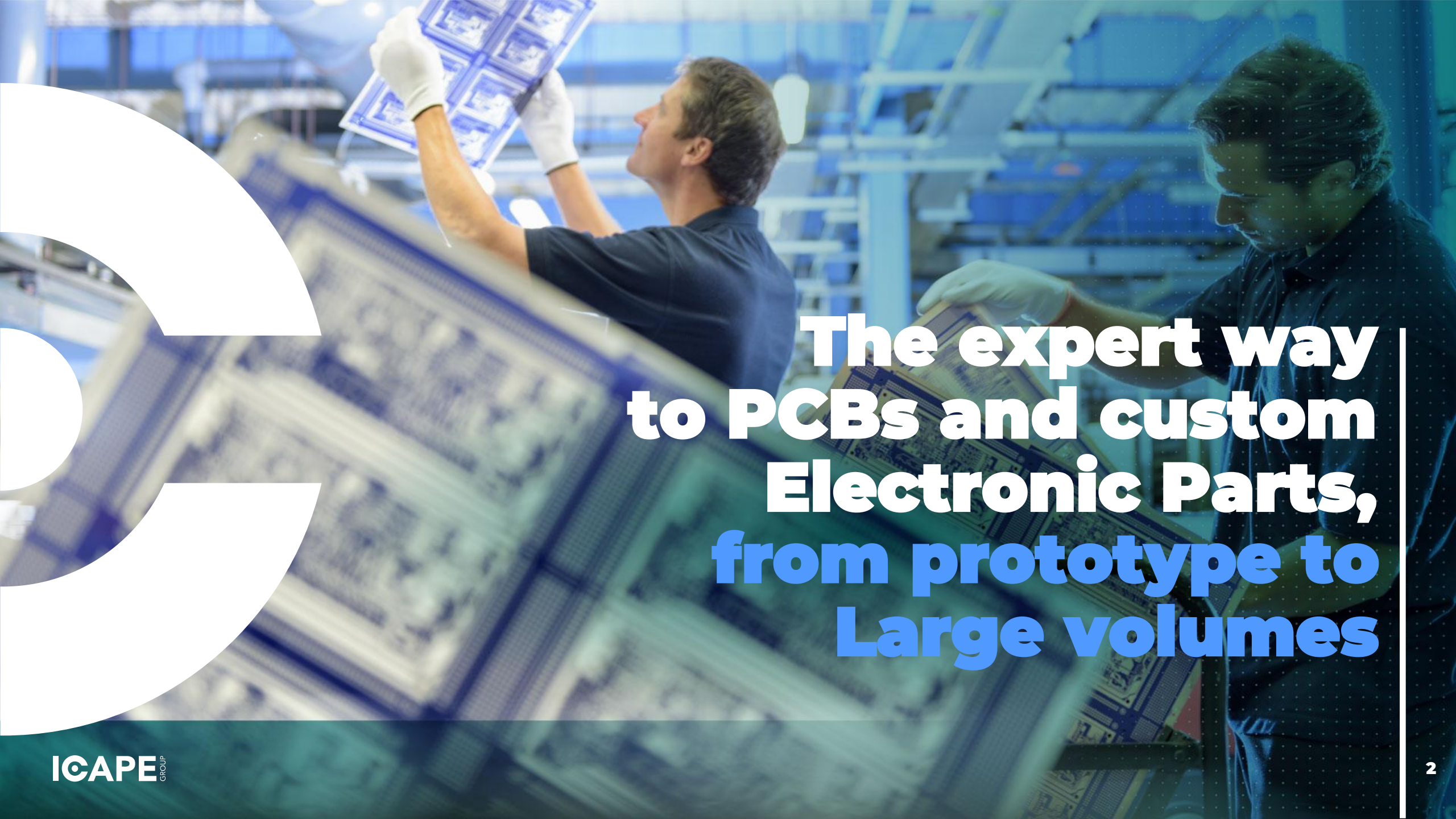




**ICAPE** GROUP  
The power of precision

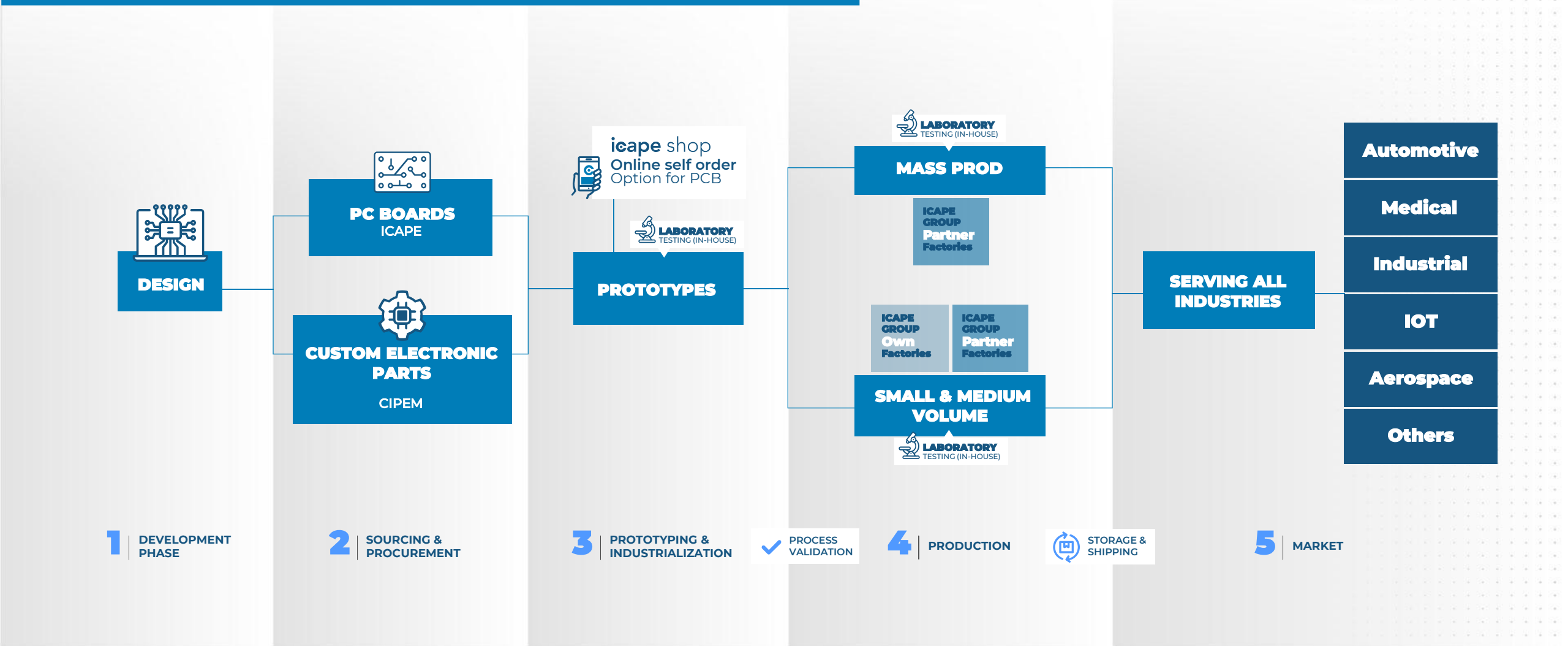
**Precision.**  
**From design**  
**to delivery**



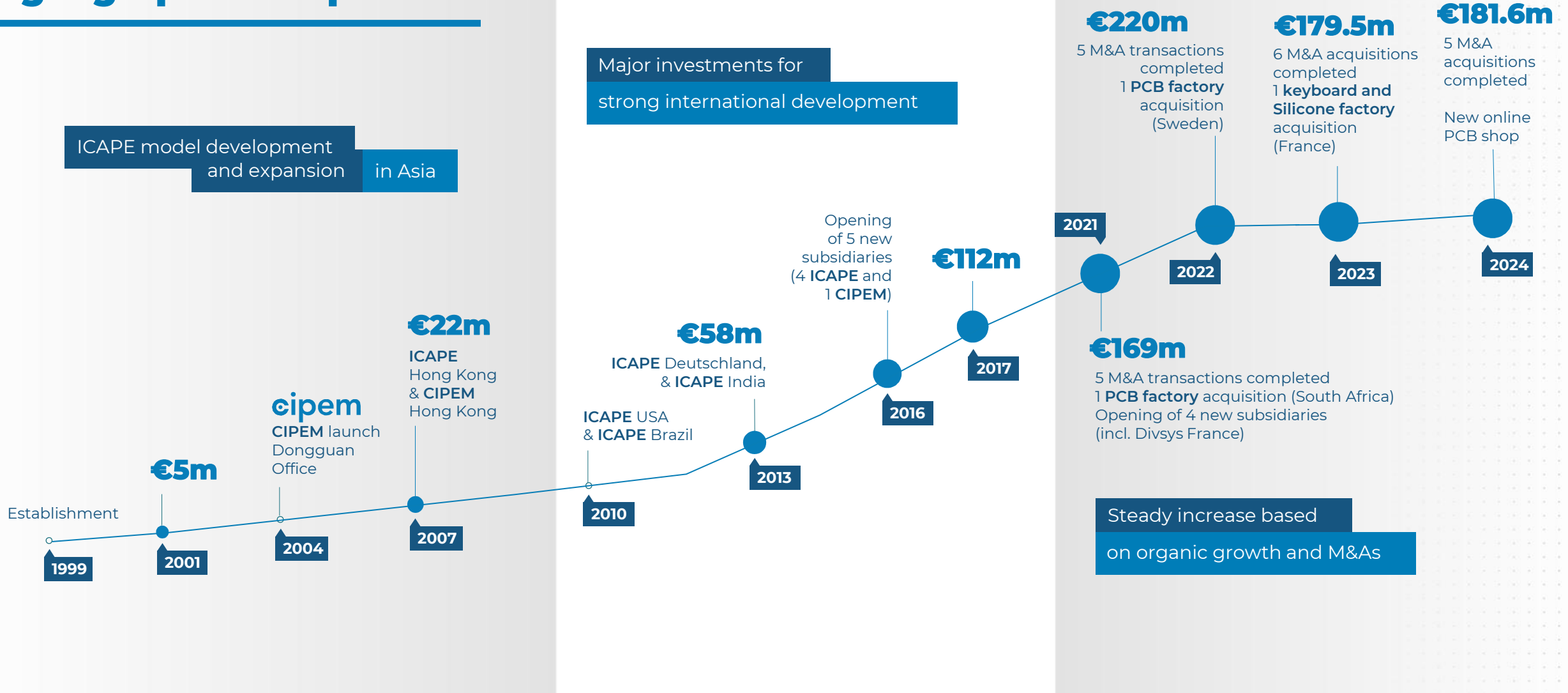


**The expert way  
to PCBs and custom  
Electronic Parts,  
from prototype to  
Large volumes**

# Our goal is to add value at every stage of the product creation chain

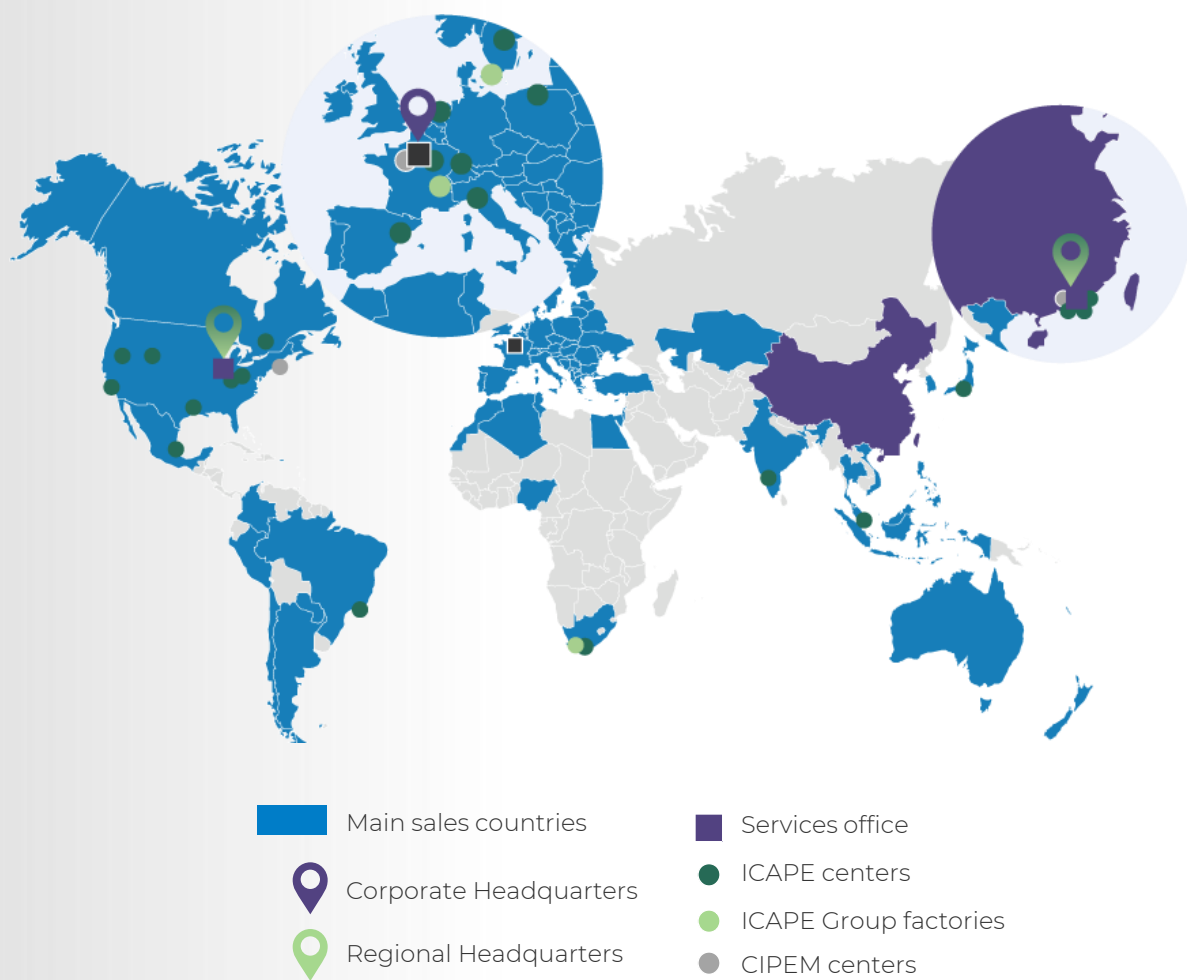


# A history of growth and geographical expansion<sup>(1)</sup>

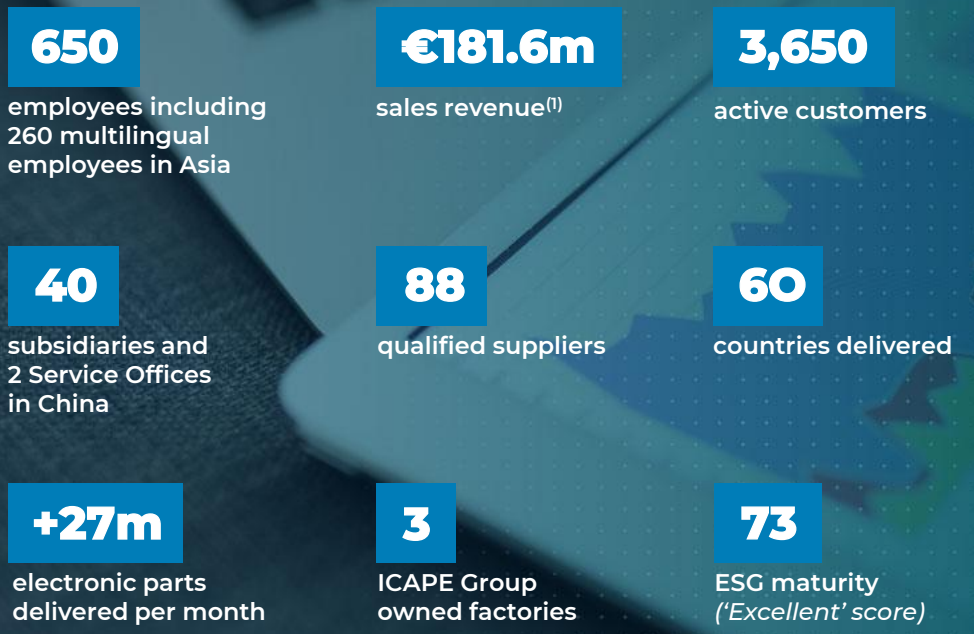




# ICAPE Group at a glance



## Among the world's leading companies and one of the main players in Europe



**The largest portfolio in the industry covering all your needs**

**icape**

*Printed Circuit Boards*



**+10 technologies**



**27 factories**

HDI | Rigid-flex | Aluminum (IMS)  
Semi-flex | Heavy Copper & Back Panel  
Multilayer | Microwave /RF  
Double-sided PTH  
Single-sided & double-sided STH

**cipem**

*Custom Electronic Parts*



**+10 commodities**



**61 factories**

Cables & Connectors | Adapters  
Transformers & Coils | Membrane  
Switch Keypads | Batteries | Silicone  
Displays | Metal | Plastic |  
Sub assemblies / Turnkey Products

*Complete electronics products*



**Turnkey products**

**Ideas to full-fledged Design**

**Prototypes to series production**

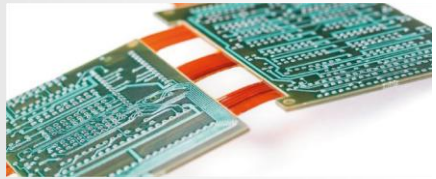
**R&D - Industrialization - production**





## High-density connection - HDI

- HDI with 1, 2, or 3 levels or ELIC construction (with laser microvia)



## Rigid-flex

- Rigid part (4-16L), FR4
- Flexible parts (1, 2, 4L)
- EMI Shield Film on Flexible area



## Aluminium (IMS)

- Power & Lighting applications
- Raw material on metallic base: aluminum, copper, steel



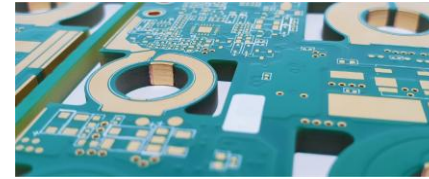
## Semi-flex

- Economic 3D PCB in FR4 (1 - 4L)
- Lamination/routing process, cost advantage vs Rigid-Flex



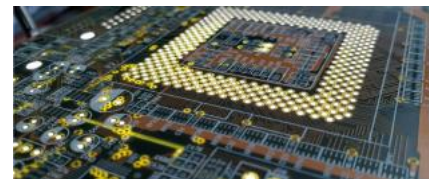
## Flex

- Standard products (1, 2, 4L) with coverlays or PHI.
- FR4 Stiffeners
- EMI Shield Film



## Back panel/Heavy copper

- Power Electronics
- High layer count (up to 64 layers)



## Multilayer

- Standard products (4-6L), FR4, photo-sensitive Solder Mask
- Special types (thick copper, thin core, hard gold, etc)
- High layer count (8 to 64 layers)



## Microwave/RF

- Radio frequency and antenna applications



## Double-sided PTH

- High-density products
- Special types



## Single-sided & double-sided STH

- With conductive jumpers: carbon, silver, or copper pastes
- Silver Through Holes (STH) or Copper Paste Through Holes (CPTH)



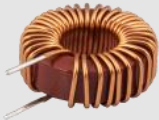
## Cables & connectors

- | Custom Cable Assemblies & Common Cable Assemblies
- | Wire Harnesses
- | Custom Connectors



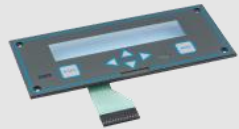
## Adapters

- | Wall Mount Power Supply
- | Desktop Power Supply
- | Interchangeable Or Fixed AC Adapters
- | Open Frame Adapter



## Transformers & coils

- | High & Low Frequency Transformers
- | Inductors & Filters
- | Air Coils & Toroids



## Membrane Switch Keypad

- | PET + Silver Ink Membrane Switch Keypad
- | FPC Membrane Switch Keypad
- | Overlays
- | Technical Labels
- | Pad Printing



## Batteries

- | Li-ion & Li-po Rechargeable Batteries
- | Ni-mh & Lead Acid Rechargeable Batteries
- | Primary Batteries (Coin Cell, Standards Alkaline, ...)



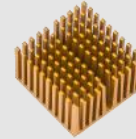
## Silicone

- | Silicone Keypad
- | Silicone Sealing Gasket
- | Silicone Technical Part



## Displays

- | TFT Displays
- | VA type
- | TN, HTN, STN, FSTN & DFSTN types



## Metal

- | Die Casting Parts
- | Stamping Parts & EMC Shielding
- | Aluminum Extrusion Heatsink



## Plastic

- | Plastic Injection Parts
- | Plastic Injection Molding



## Sub-assemblies/Turnkey products

- | Remote Control Units:
- | Electromechanical Assemblies
- | PCB Assemblies



# Combined with unique services

## ENGINEERING

- Design to cost/DFM
- R&D
- Value-engineering
- Local FAE team

## SOURCING

- Strict Approved Vendor List
- Diversified factories
- All volumes
- Purchasing leverage

## QUALITY

- Permanent audits
- Strict targets
- Enhanced control
- Complete quality accuracy

## SUPPLY CHAIN

- Consolidation
- VMI/CMI/Call Off
- All incoterms
- Local warehouses

## QUICK TURN SERVICES

- Online shop
- Prototype & Small series
- Fast delivery

## A diversified base around the world

Our purchasing leverage as a way to **fight price increases** and increase your **buying power**.

Extensive network of **global** partner factories, enabling us to deliver tailored solutions **locally** or **anywhere in the world** to meet your unique needs.

### ICAPE Group's purchasing networks





**We are more than a supplier,  
we are a manufacturer**

**trax**

 **SOUTH AFRICA**

**Quick turn**  
Rigid PCB

MONTHLY CAPACITY

**550 m2**

MAIN PRODUCTION

**SS - 18L**

**FR4**

**PTFE**

CERTIFICATES

**ISO9001**

**UL**

**icape-  
mmab**

 **SWEDEN** | Europe

**Quick Turn**  
Rigid PCB

MONTHLY CAPACITY

**500 m<sup>2</sup>**

MAIN PRODUCTION

**2L**

**4L**

**6L**

**8L**

CERTIFICATES

**ISO9001**

**UL**

**ihm**

 **FRANCE** | Europe

**Keyboards &  
Control Panels**

MAIN PRODUCTION

**Membrane Switch  
Keypads**

**Overlays**

**Pad Printing**

**Technical Labels**

**Integration**

CERTIFICATES

**ISO9001**

**14001**

# A logistics network that spans the world

- | Systematic consolidation and optimization
- | Multiple logistics platforms
- | Tracking of goods in real time
- | Inventory management (VMI/CMI/Call-off)
- | Sustainability and eco-friendly shipping practices



## Air Freight

7 to 14 days



## Sea Freight

6 to 11 weeks



## Sea-Air Freight (France/Germany)

3 to 4 weeks / 10-25% cheaper than air



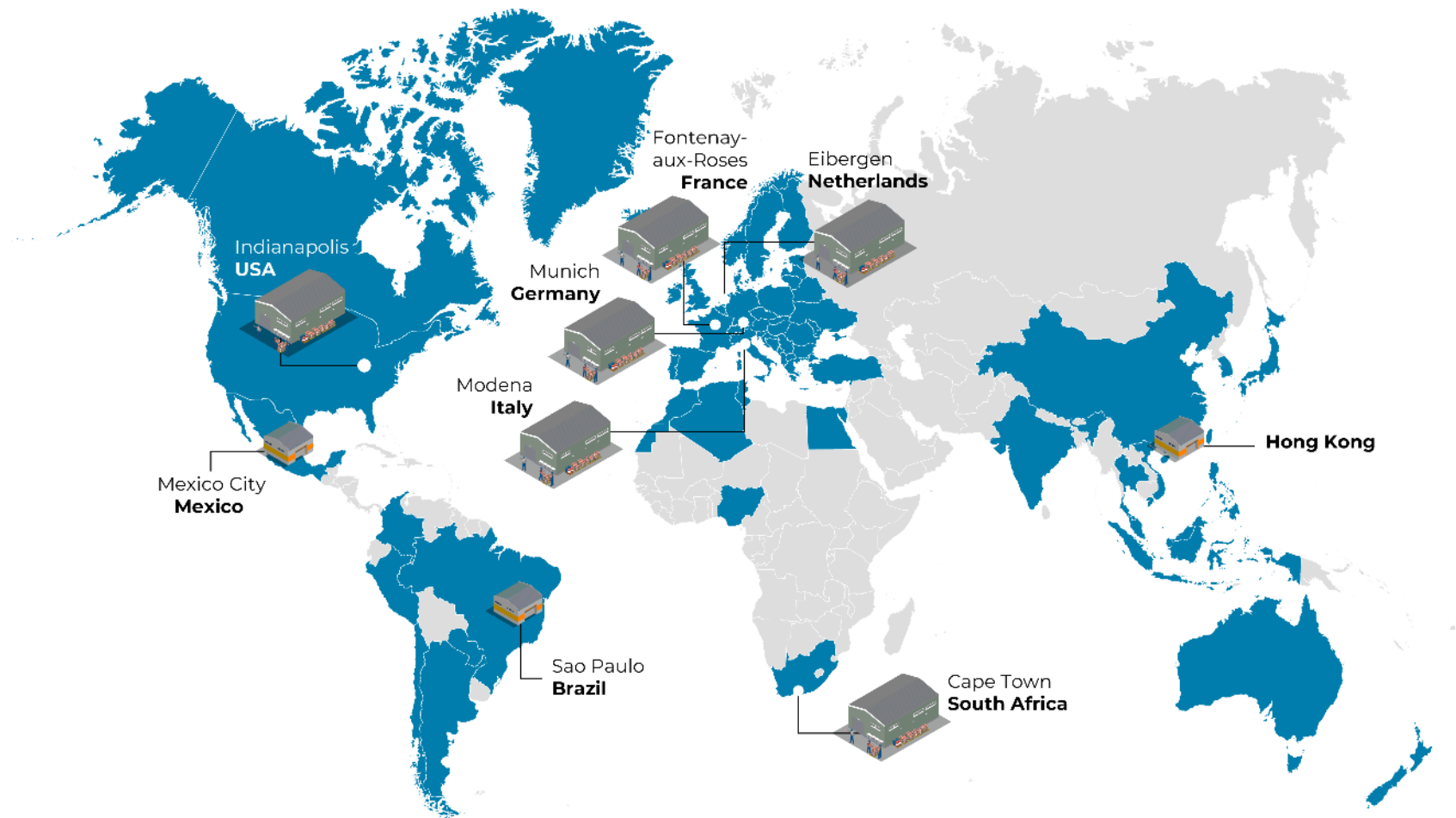
## Ground Freight

3 to 5 days (Europe only)



## Express Freight

3 to 5 days



 Sales presence



ICAPÉ Group warehouses



Sub-contracted warehouses



# Uncompromising standards every step of the production process

**IPC 600 | IPC 610**  
**ISO 9001 | VDA AUDITOR**



A team of  
**80 people**  
dedicated to quality



**5 in-house labs**  
in France, China,  
Germany, South Africa,  
and the US



**40 DPPM**  
control target for  
**automotive/aero**



**100 quality audits**  
performed per year



**Full inspection**  
Samples, quick turn  
& critical industries



**Inspectors (QI)**  
on site

# The easiest way to order PCBs online

Prototyping and small series  
PCB lab testing services  
Stencils



2 DAY  
DELIVERY  
MIN



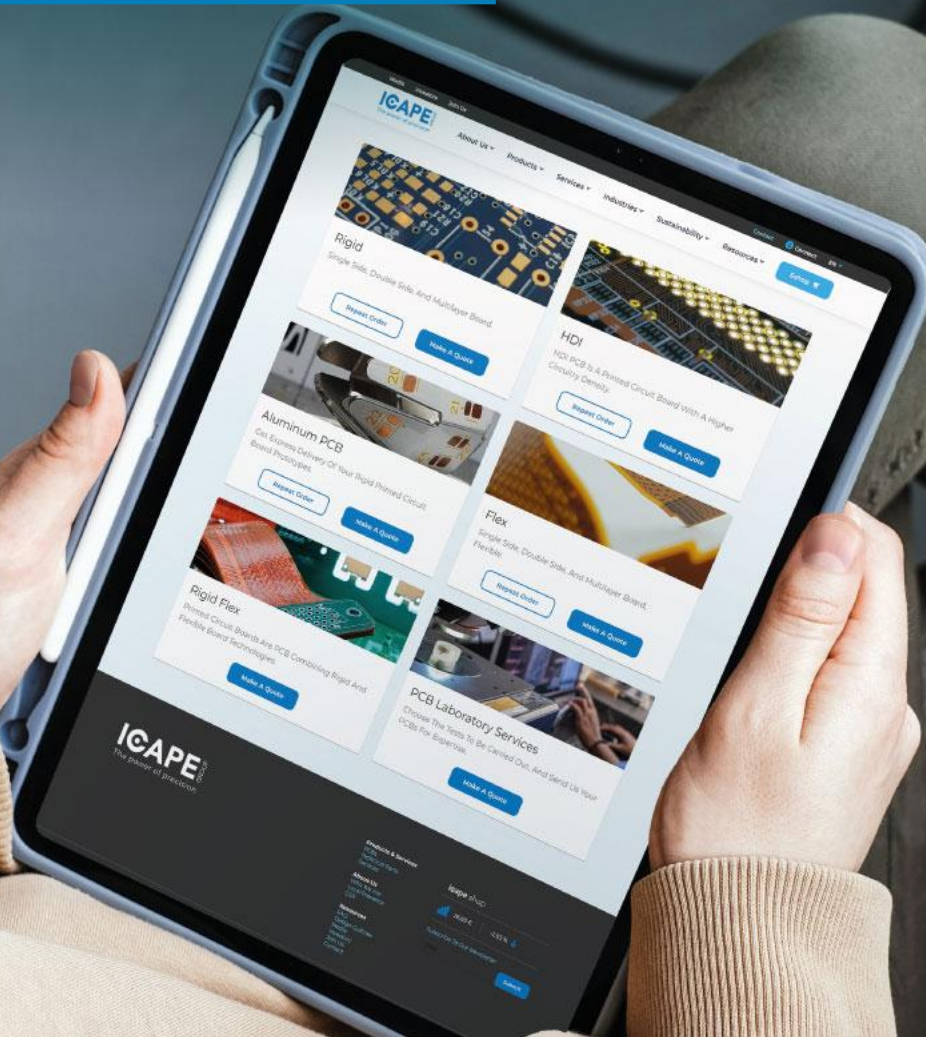
ENHANCED  
QUALITY  
CONTROL



COMPLETE  
QUALITY  
ACCURACY



AUTOMATIC  
GERBER  
EXTRACTION



## QUALITY CONTROL

- Product Liability Analysis & Assurance
- Low defect rate
- Several controls on all batches (over 30 tests)



## ENGINEERING TEAM

- Team of 6 PCB engineers available 16 hours/day and 6 days/week
- Accelerate product development cycle
- A complete set of services  
(DFM, UCAMCO Report, Working Gerber, Stencil)



# Beyond Products: Unleashing Expertise



## Market Reports & Design rules

Providing strategic insights and trends to empower your decisions in the ever-evolving landscape



Download our  
latest reports



## Webinars & Seminars

To keep you informed about industry developments, best practices, and cutting-edge technologies



Check our **next dates**

## All Around ELECTRONICS



## Events

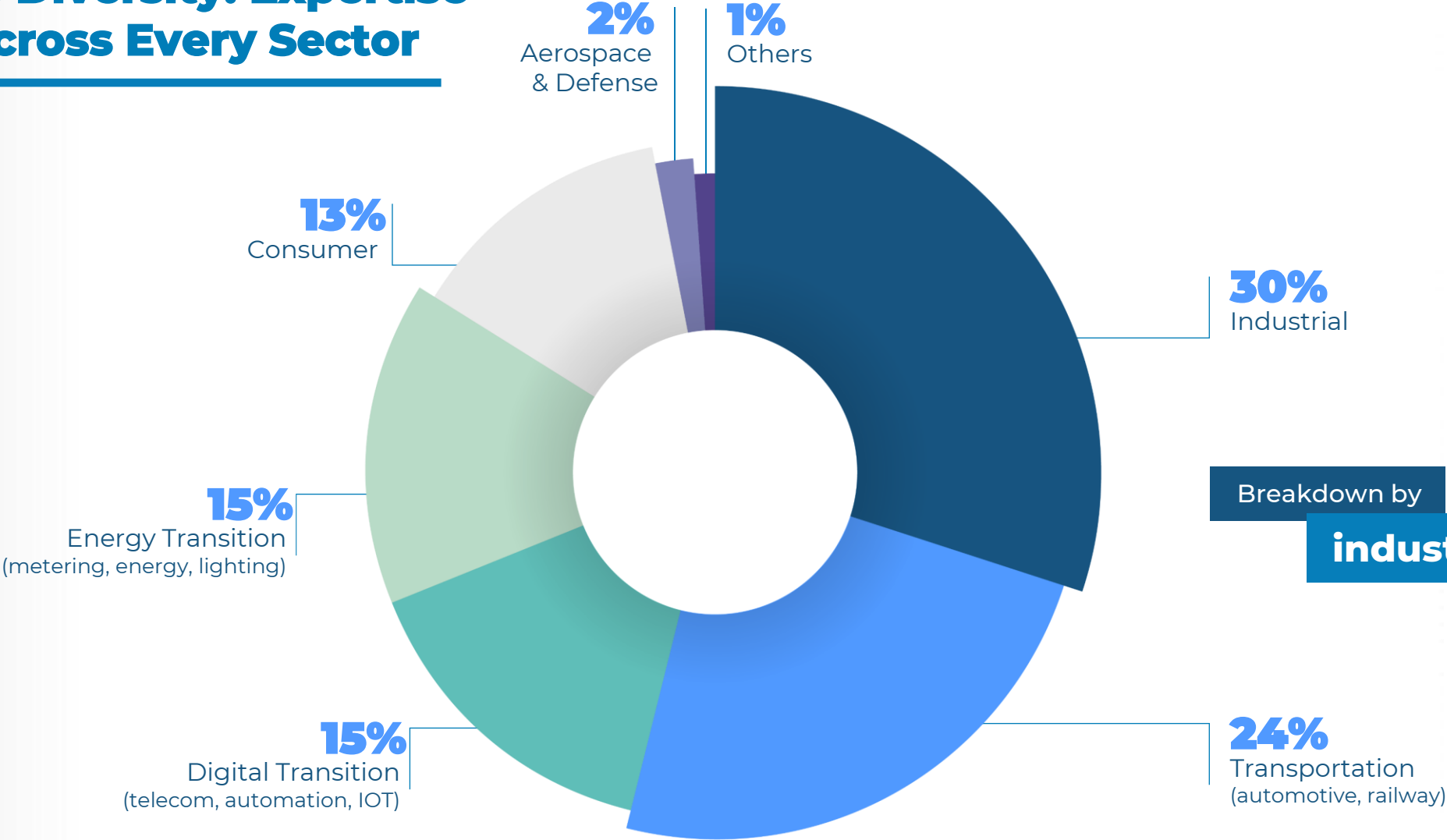
Join our events for insights on trends, innovations, designs, and evolving norms.  
Stay informed with us!

## Beyond Brokering: Trust and Expertise Over Products

	Traditional PCB Broker	ICAPE GROUP
All Technologies	<i>Only for large volume orders</i>	✓
FAE department support	<i>Limited to only PCBs and for large volume orders</i>	✓
Company-owned factories	✗	✓
Liability Insurance	<i>Limited</i>	✓
Custom Electronic Parts	✗	✓
Online PCB shop	✗	✓
In-house lab testing	✗	✓
Worldwide Sales Presence	✗	✓



# Revenue Diversity: Expertise Reach Across Every Sector



# Credentials that Count: Our Certifications in Every Industry



## Main certifications



## Automotive



## Aerospace



## Liability Insurance



UP TO €15M

Highest on the market

## Routing Parameters



## Medical



## Industrial



## Railway





**Let us be the right  
partner for your projects**



The most  
**diversified portfolio**  
in the industry



Unmatched  
**Technical  
Expertise**




A **global company**  
with a **local approach**  
to better serve you

**For any questions,  
keep in touch**

**Lizzy  
Barrera**

**Sales**

 **Mexico**

 **+523314675982**

 **Lizzy.barrera@icapemexico.com**

 **www.icafe-group.com**