



**TFS AERO AS STRATEGIC
MANUFACTURING PARTNER**



○ Mision

We provide comprehensive and innovative **solutions** to our clients in the energy sector, increasing the profitability of their operations.



○ Vision

To become an international corporation of the energy industry that, through operational excellence and the **maximization** of financial results, increases the generation of value for our stakeholders with strict adherence to the company culture that distinguishes us.

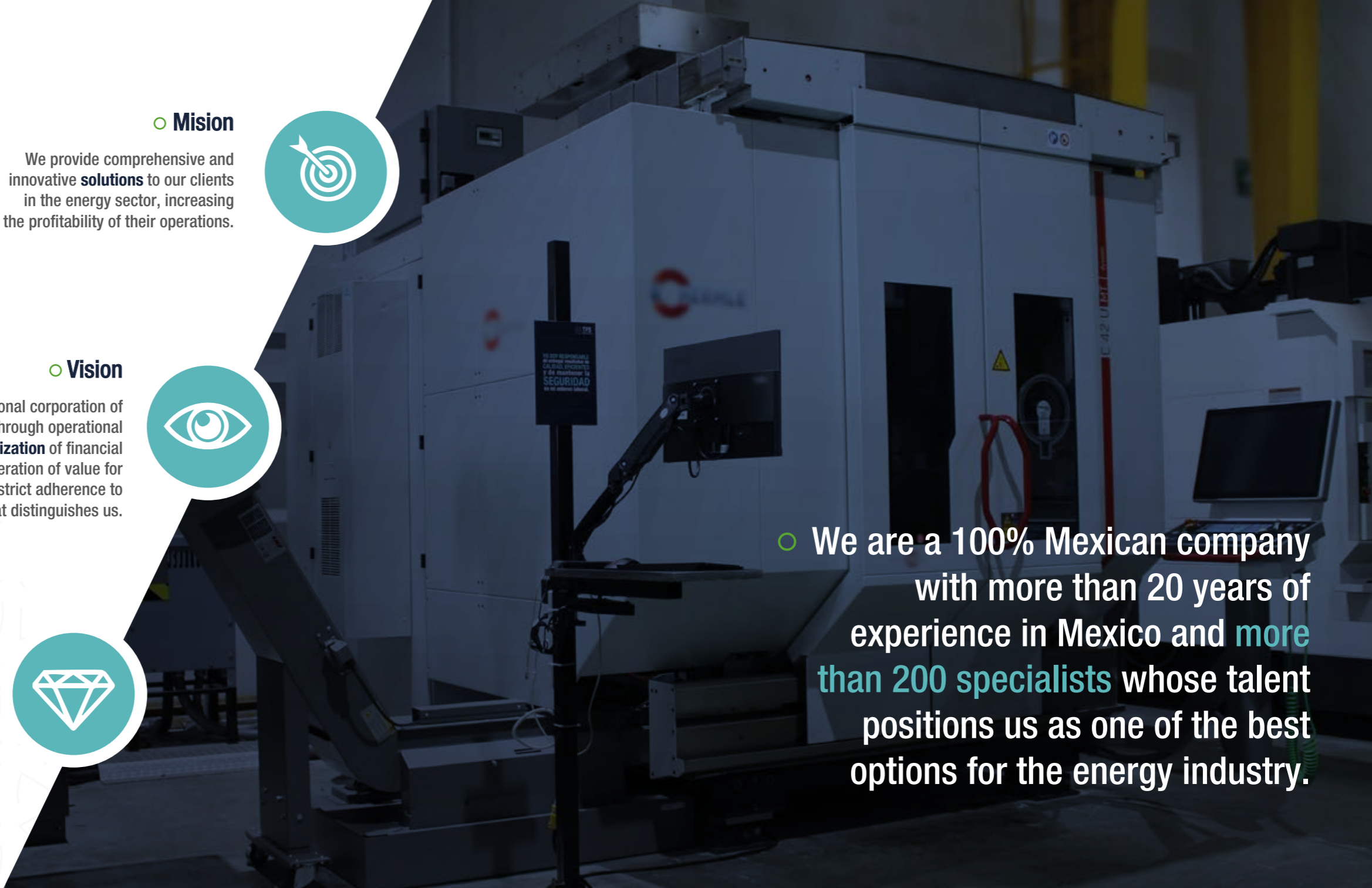


○ Values

Commitment
Sustainability
Responsibility
Teamwork
Innovation



○ We are a 100% Mexican company with more than 20 years of experience in Mexico and **more than 200 specialists** whose talent positions us as one of the best options for the energy industry.



Certifications

At Turbine Field Solutions & TFS AERO, we provide quality and operational reliability in each project through the coverage of our Integrated Management System (IMS), responding to the needs of our stakeholders.

○ Quality

ISO 9001: 2015

We promote the monitoring of the actions taken through our quality program.

○ Safety and Health at Work

ISO 45001: 2018

We control actions by managing risks based on the occupational health and safety standard.

○ Environment

ISO 14001: 2015

We take care of the impact on the environment through our environmental compliance program.

○ Anti-bribery Management System

ISO 37001

TFS is committed to a Code of Ethics and Conduct based on organizational values which requires us to conduct business with integrity.

○ Aerospace Quality Management System AS9100D

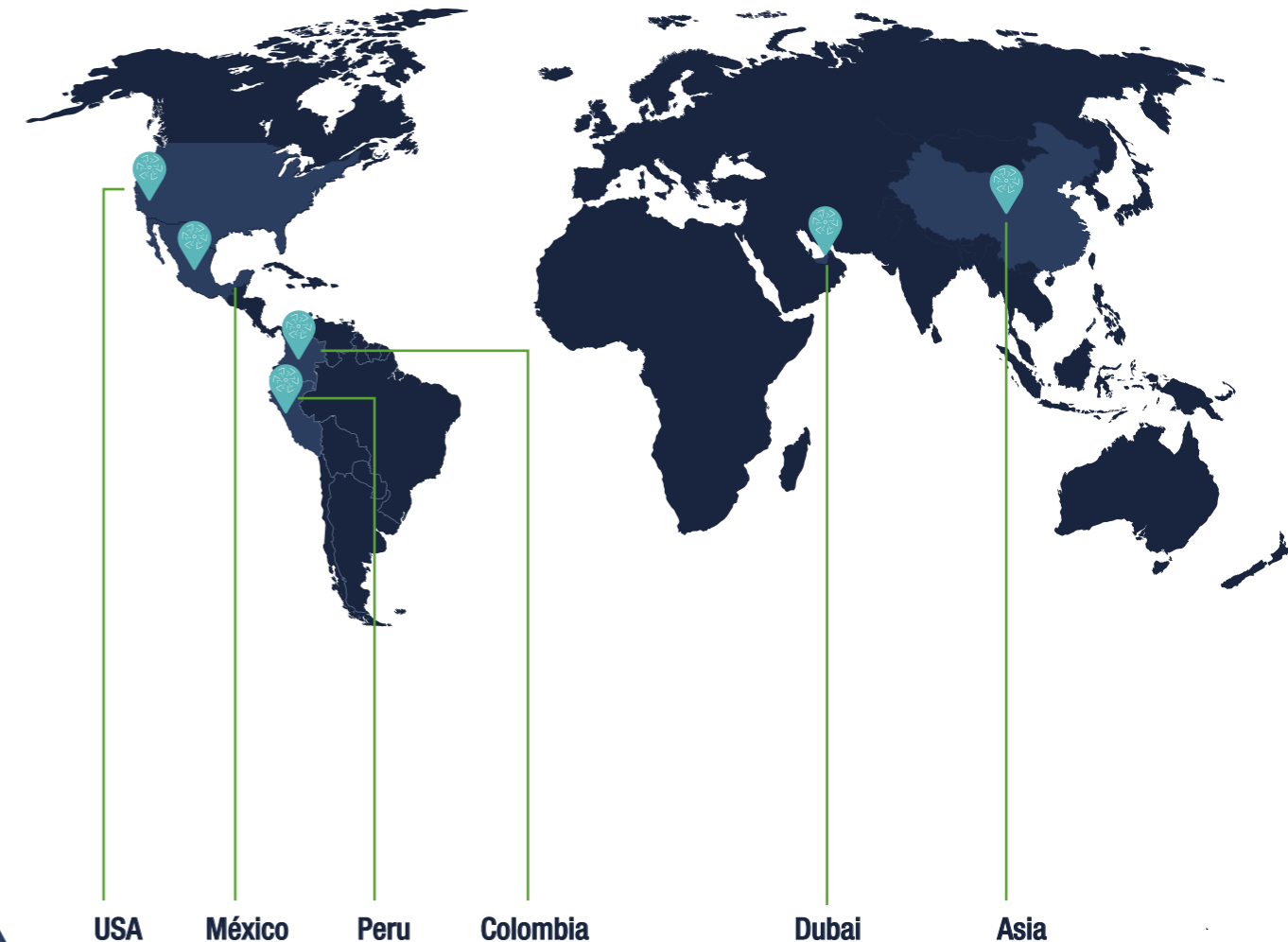
To be implemented in 2025

The IMS encompasses all areas managed under the same objective, focused on generating value for our stakeholders.

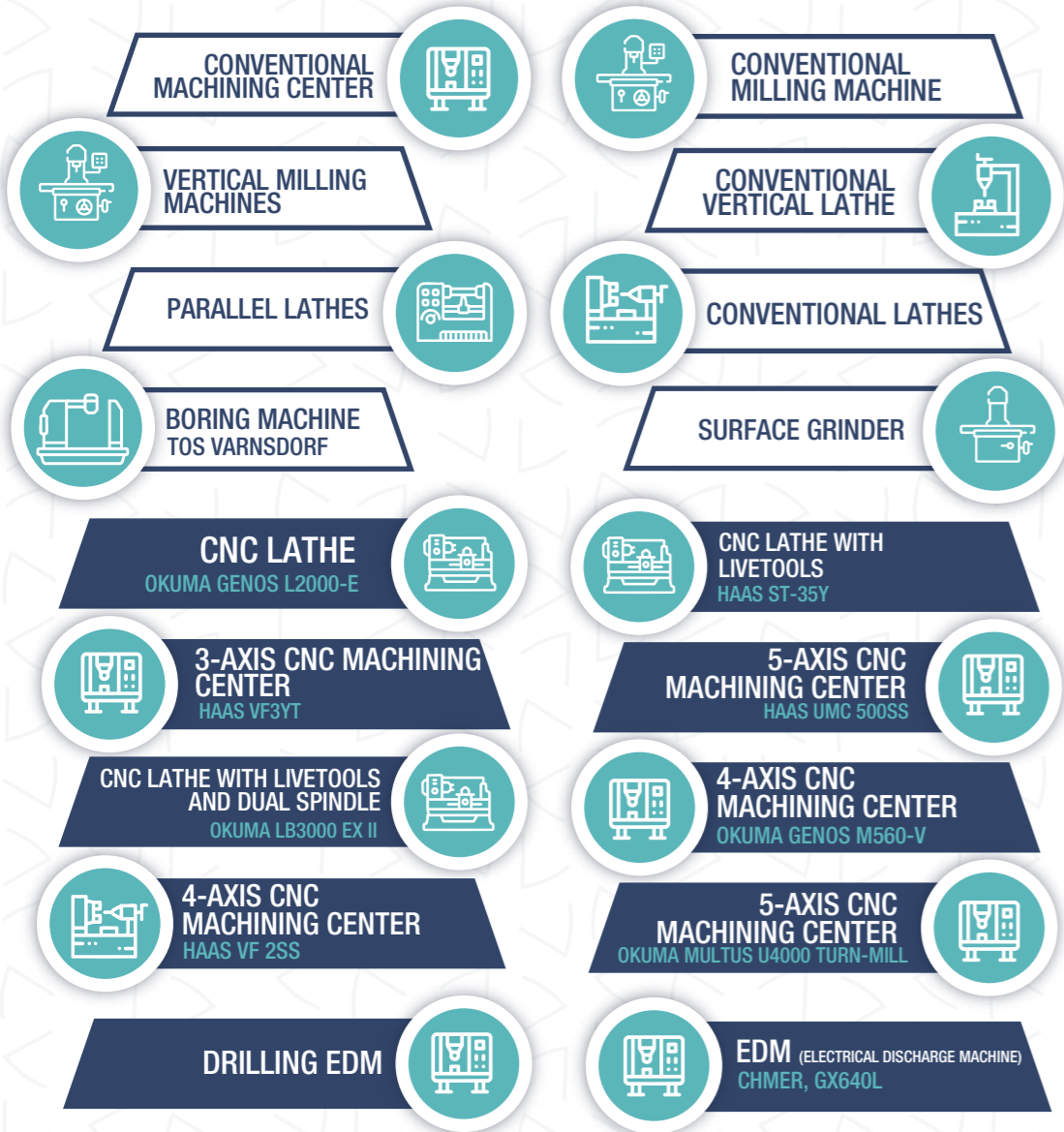


Our presence

in Mexico, Latin America, USA, Dubai and Asia.



Installed capacity

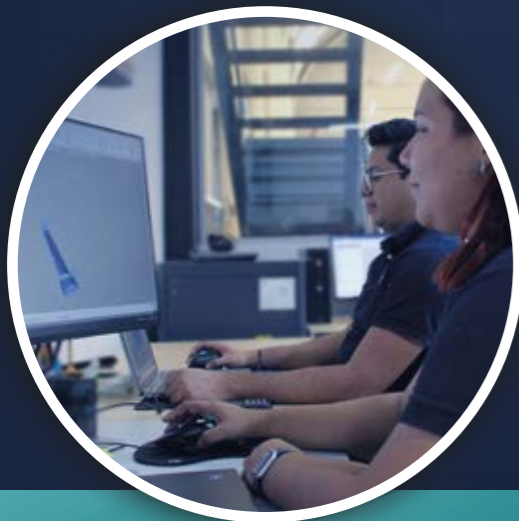


TFS
capacity

+10,000 m²
of workshop



400 m²
of laboratory



154
Engineers

46
Auxiliary
Staff



TFS
AERO

27
Graduates

19
Technicians

Research and Development Laboratory

R&D

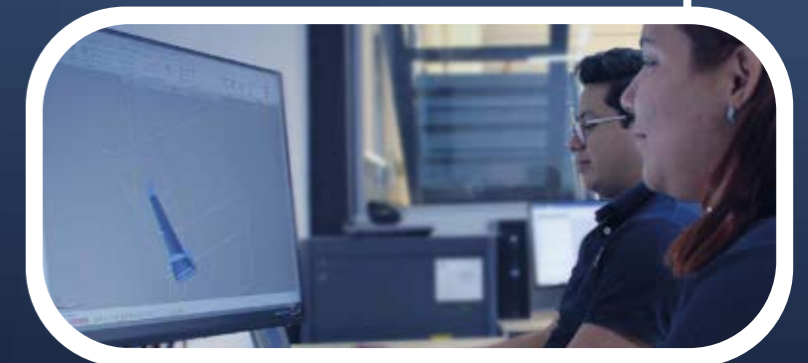
Metallurgical inspections

Positive material identification

3D modeling

Engineering drawings

Finite element analysis



Equipment and software

R+D Lab



Software's

GEOMAGIC Design X

GEOMAGIC Control X

GOM inspect

Blade Inspect

SolidWorks

Ansys Granta selector

Ansys

Flow Simulation

Rhino

Camio LK Metrology

Equipment

Faro Arm

ZEISS ATOS Q

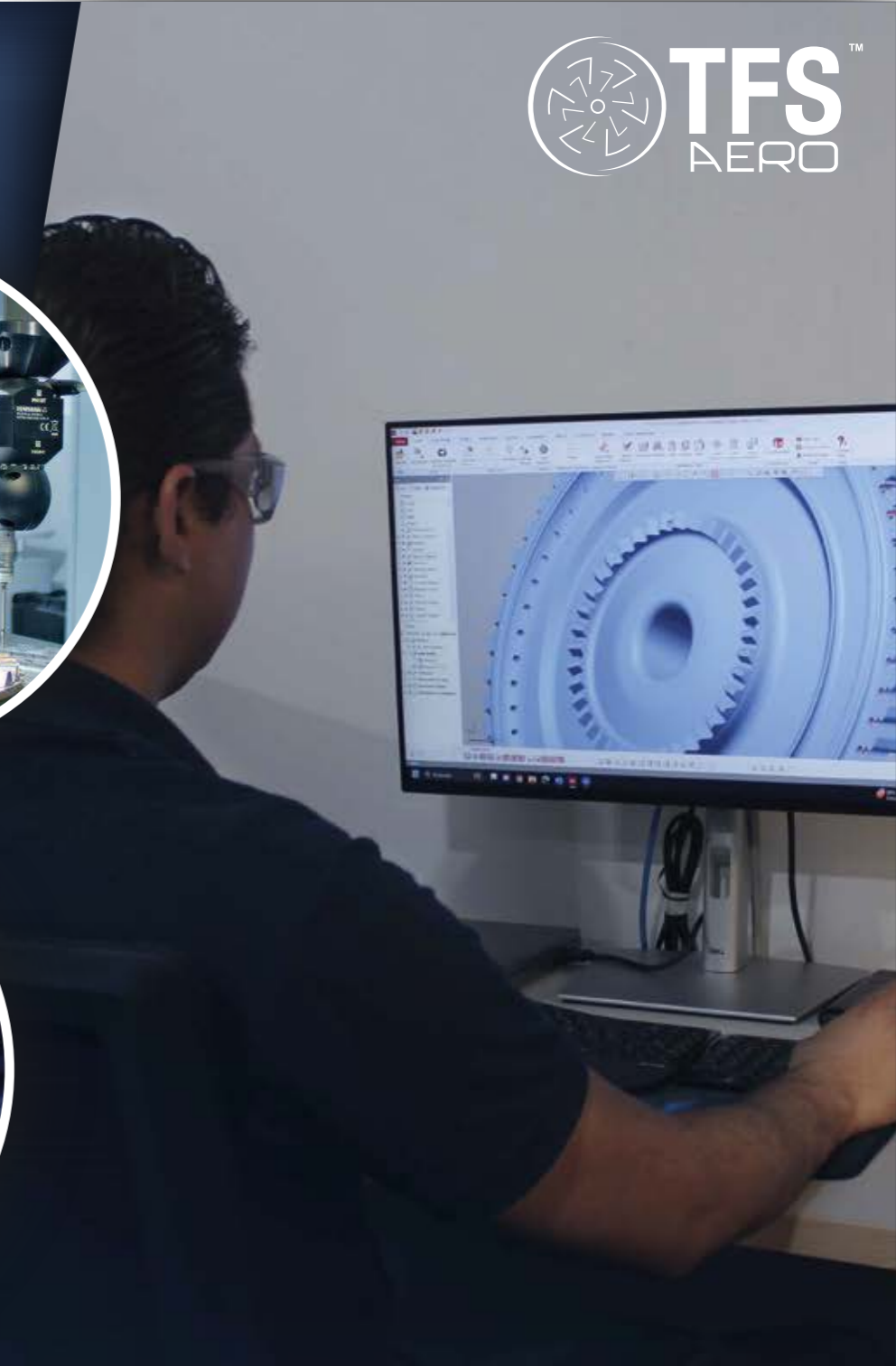
KEYENCE Image dimension
measuring system IM-8000

VHX KEYENCE Digital microscope

VANTA XRF Analyzer

LK Metrology Coordinate
measuring machine

Hardness Tester MITUTOYO



MRO

- The **MRO** stands out as a benchmark in the component inspection and repair industry, recognized for its precision, innovation, and **strong commitment to quality**.



Coating

- Epoxies
- Thermal
- Anti-corrosion

Chemical and abrasive cleaning

- Blasting Cabinet
- 4 Abrasive Cleaning Booths
- 2 Ultrasonic Tanks

NDT

- Magnetic particles
- Visible penetrant liquids
- Fluorescent penetrant liquids
- Industrial ultrasound

Metrology

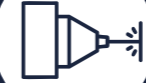
- CMM Mod. CRYSTA-APEX V7106 MITUTOYO
- Manual measuring instruments.

Heat Treatment

- Furnace Vacuum
- Furnance Heat Treatment



Electroplating



Cladding Welding



Automatic Orbital TIG Welding



Automatic Seam TIG Welding



TIG Welding



Arc Spray



HVOF



Flow test bench



TFSTM
AERO