



**Recodeal Corporate**

**Total Interconnect System Solution  
Provider**

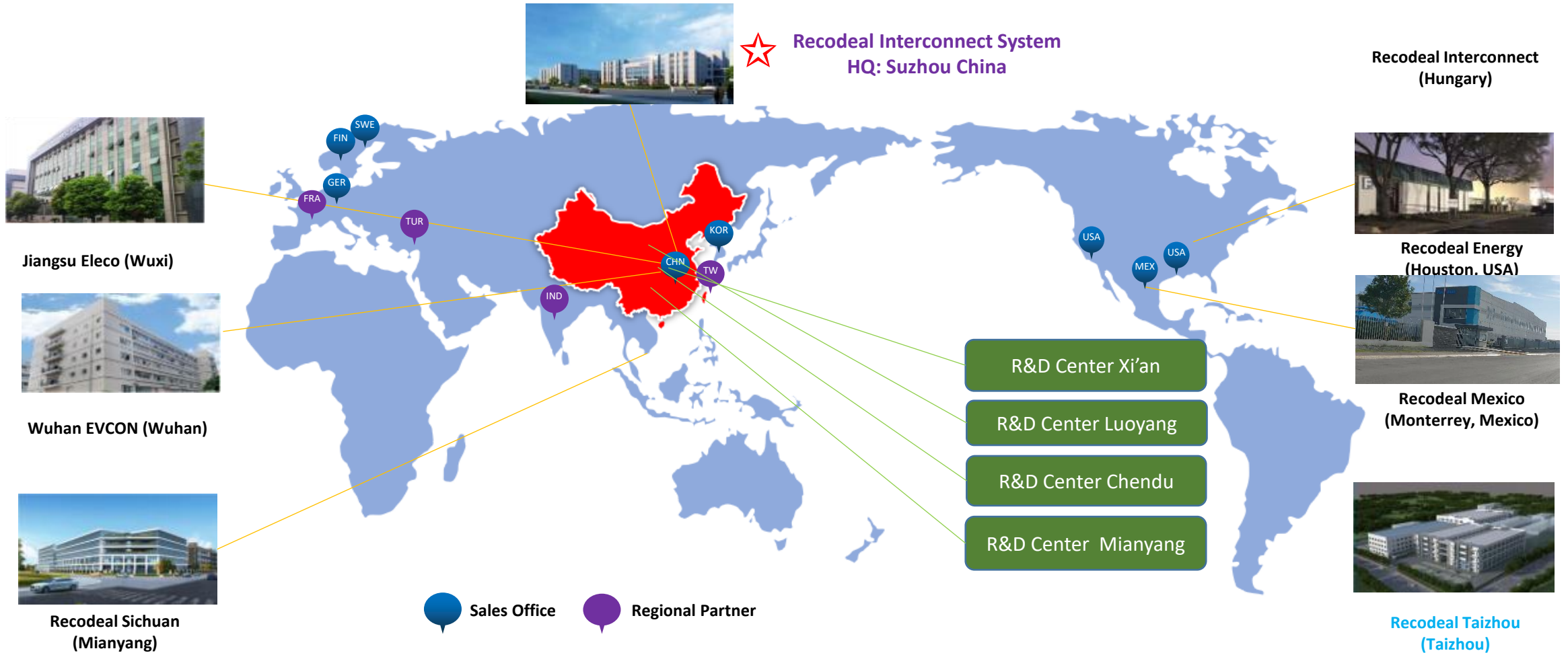
**Recodeal Interconnect System Mexico**  
Part of Suzhou Recodeal Interconnect System, China  
**Stock code: 688800**



# | 01 - About Recodeal

## Our Global Presence

- Our global presence: We Operate globally in close association with our customers and partners.



# 01 - About Recodeal

“Focusing on Client Needs, and Creating Values for Clients”

## TELECOM



## INDUSTRY



Wind Power, photovoltaic, energy storage, charging infrastructure



## ELECTRIC VEHICLE

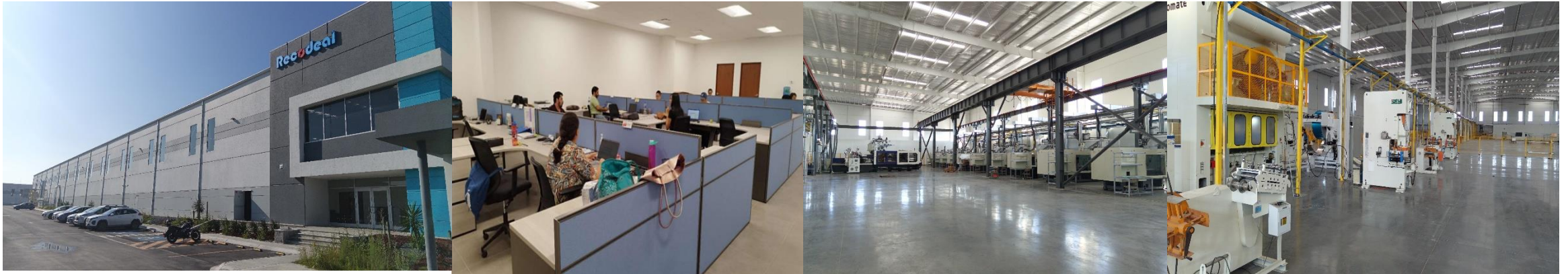




# Monterrey Building Information



## Factory Overview



### Total Area:

116,680.621 sq. ft / 10839.995 sq. m

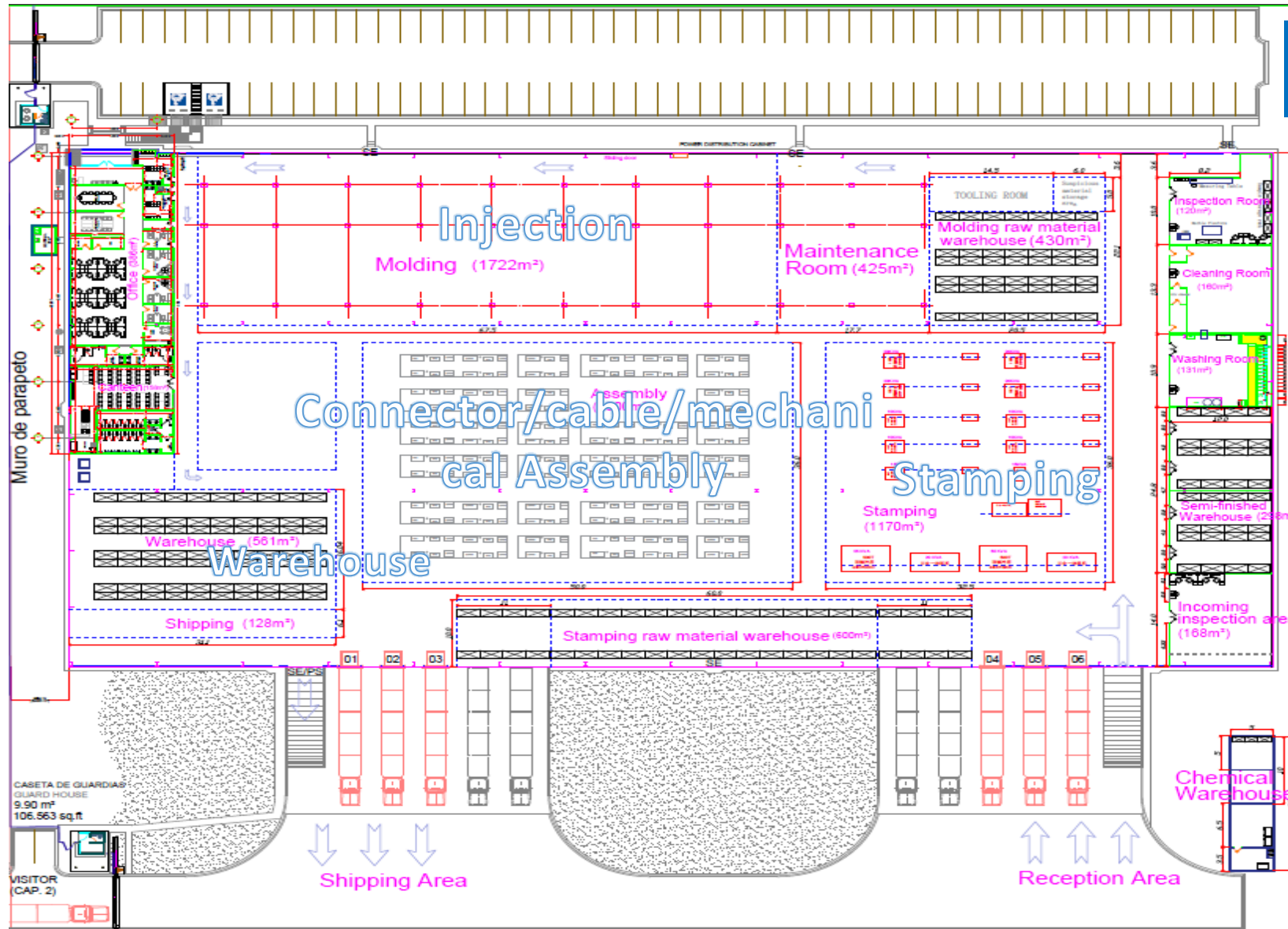
### City:

Monterrey, Mexico

### Location:

Vynmsa Monterrey Technology Park

# Factory Layout and Capability



## IMMEX Program Coverage

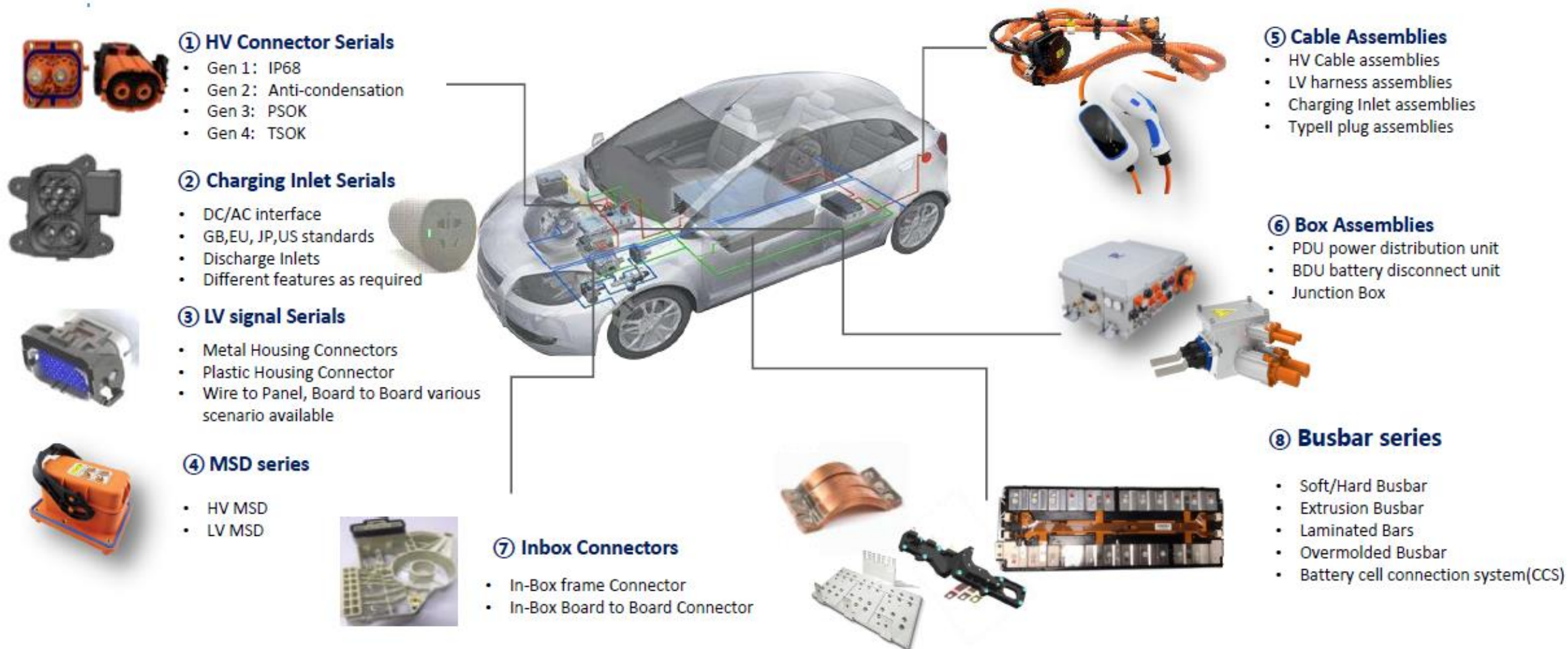
### Products:

- Stamping/terminals/sockets
- Sheet metal & Enclosures
- Electrical busbars
- Connector/cable assemblies
- mech. / unit assemblies

### Manufacturing sections:

- Injection molding
- Stamping and sheet metal
- Machining
- Assembly production lines

## (1) Vehicle "Electrification" Connectivity Solutions





## | 03 - Product & Solutions

### (2) Charging and Battery swap connectivity solutions

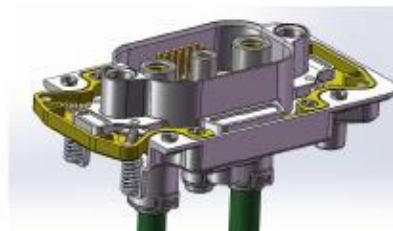


① **Charging plugs:** Recodeal offers featured charging plugs for charging stations including standard plugs & HPC plugs(oil cooling and water cooling)



② **Mobile charger:** Recodeal's mobile charger enables elimination of vehicle OBC and standardize the interface for both DC and AC to reduce costs for vehicles

③ **Battery swap connector series :** RECODEAL battery-swap connectors are widely used on commercial vehicles, passenger cars, and heavy trucks etc, providing fast power replenishment through battery replacement. Recodeal unique float-mounting design enables reliable swapping process while staying with superior connections



*Recodeal unique X, Y, Z direction 10mm floating mounting design*

- Gen 1: External Guide Post
- Gen 2: Internal Guide Post
- Gen 3: None Guide Post



GEN1



GEN2

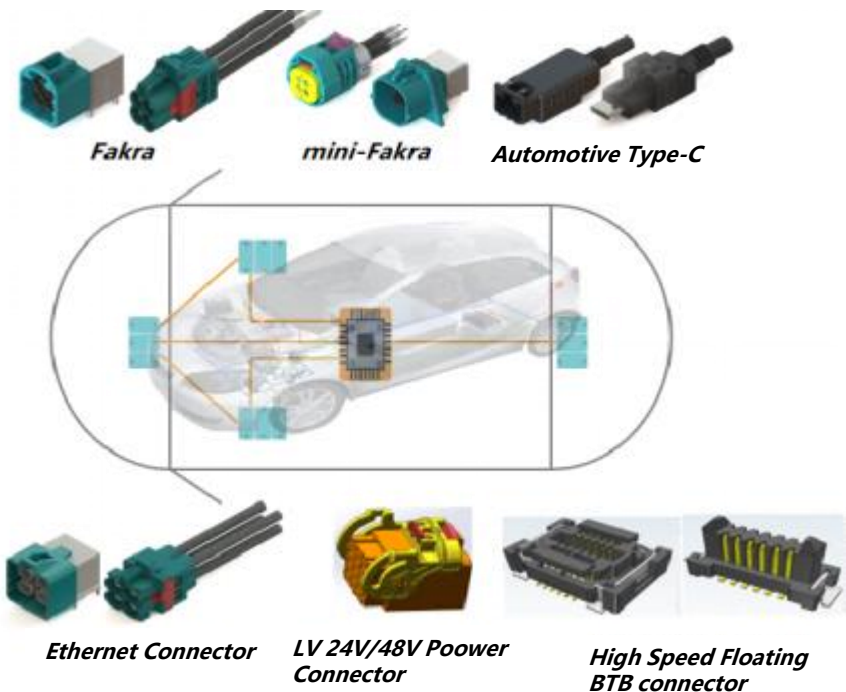


GEN3

# I 03 - Product & Solutions

## (2) Vehicle "Intelligence" Connectivity Solutions

Three main application areas of high-speed data transmission connectivity systems are infotainment systems, intelligent driving based safety systems and in-vehicle high-speed networking systems (Ethernet).



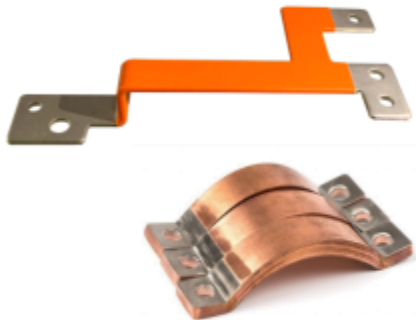
- ① **FAKRA Serials**
  - Used in broadcasting antenna, navigation system, automotive communication, Bluetooth, HD camera, etc.
  - Max. frequency - 6GHz, max. data rate 3Gbps/s
- ② **mini-FAKRA Serials**
  - Used in 4K cameras, sensors, high-definition displays, digital antennas and mobile networks
  - Max. frequency - 20GHz, max. data rate 28Gbps/s
- ③ **HSD Serials**
  - Used in infotainment systems, dashboards, HD displays and USB, etc.
  - High anti-crosstalk performance, differential signal transmission
  - Max. frequency - 2GHz, max. data rate 3Gbps/s
- ④ **Automotive Gigabit Ethernet connector**
  - Used in domains, zone controllers, compute centers, cameras, LiDAR and high-resolution displays
  - Max. frequency - 20GHz, max. data rate 56Gbps/s
- ⑤ **Automotive Type-C**
  - Used in car host, 4K HD camera, etc.
  - Max. frequency - 5GHz, max. data rate 10Gbps/s
- ⑥ **Automotive Low Voltage Power**
  - 12/24V/48V low voltage high current connector, mainly used in the domain, zone controllers and computing center power supply
- ⑦ **High Speed, Floating BTB Connector**
  - Used in high speed board to board connection inside the box



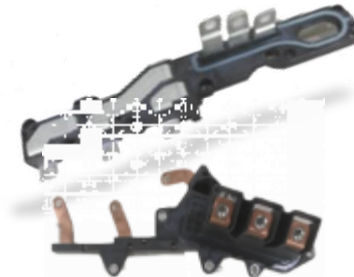
## I 03 - Product & Solutions

### (6), Busbar Solutions

We provide a comprehensive range of busbar solutions, such as flex copper busbars, hard copper busbars, flex and hard alum busbars, overmolded busbars, laminated busbars and integrated busbar solutions eg CCS, which are widely used for high voltage connections between modules or within modules in the electric vehicle industry, and high voltage connections in electrical control cabinets in rail, telecommunications and other industries.



- All kinds of flex & hard copper bars, flex & hard alum bars, and extruded copper and alum bars



- Over molded busbars, IP68 performance



- Laminated Busbars



- **Battery Cell Connection Systems**
  - ◊ FPC、PCB、FDC and Cable Solutions
  - ◊ Heat Pressing、Heat Reviting、Bracket Assembly Solutions



# Thanks !

[sales.na@recodeal.com](mailto:sales.na@recodeal.com)  
[camila.gomez@recodeal.com](mailto:camila.gomez@recodeal.com)  
[carlos.vieyra@recodeal.com](mailto:carlos.vieyra@recodeal.com)