



OUR COMPANY

HISTORY



MYGSA (aka: MAQGEN) was founded in 1985 in Monterrey, Mexico. Operating as a family-owned machine shop, offered its services mainly to general public. Later, we specialized on mid to high production of gears for various profiles and industries.



FICOSA was funded in 1998 as a sister company of MYGSA, to complement our services, strongly entering to the CNC machining market.



FACILITY

On June 2016 FICOSA moved to a new manufacturing facility in Ciénega de Flores, Nuevo León.

On 2024 we moved all gear manufacturing capability from MYGSA to FICOSA to focus on production jobs, increasing our capacities and capabilities.





FACILITY SIZE

Total Land:
26,014.7 m²
(280,023 ft²)

Available Land:
8,700 m² (93,743 ft²)

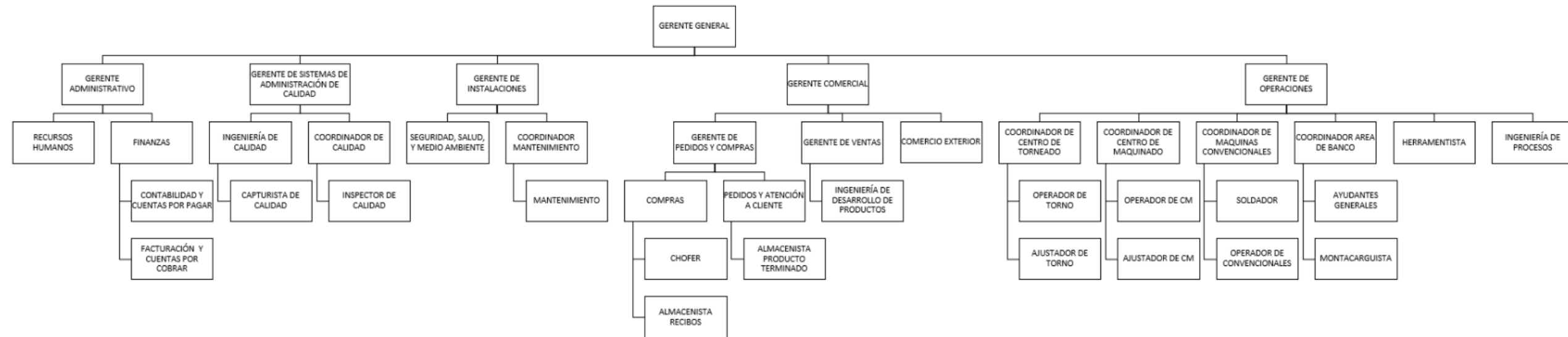
Shop Floor:
7,728 m² (83,184 ft²)

Office + Kitchen/Dining room:
782 m² (8,417 ft²)





ORGANIZATIONAL CHART





HUMAN RESOURCES

FICOSA HAS OVER 130 EMPLOYEES - 2 SHIFTS, Monday - Saturday

To be able to achieve the quality in their products FICOSA continuously trains its personnel with the determination of offering a better service.

We have also implemented this learning program, so our operators can develop new skills and upgrade their category.







PROCESSES

We have experience machining different materials from round bar stock, flat bar, castings, and plate.

Materials that we use include:

CARBON STEELS	1018, 1020, 1026, 1045, 11L14, 1144, 4140, 4130, 4340, 8620, ETC
STAINLESS STEELS	300 SERIES, 400 SERIES, NITRINIC 50
TOOL STEELS	W1, D2, O1
IRON	DUCTILE, NODULAR, NI-RESIST
ALUMINUM ALLOYS	6061, 6063, 2011, 2024, 7075, 1100
BRASS	C36000, 332
BRONCE	C95400, SAE 660, C54400, C65500
COPPER ALLOYS	C11000, C18200
SUPERALLOYS	INCONEL 718, HEINZ 282, MONEL 400
ENGINEERING PLASTICS	DELTRIN, TEFLON, NYLAMID, MICARTA



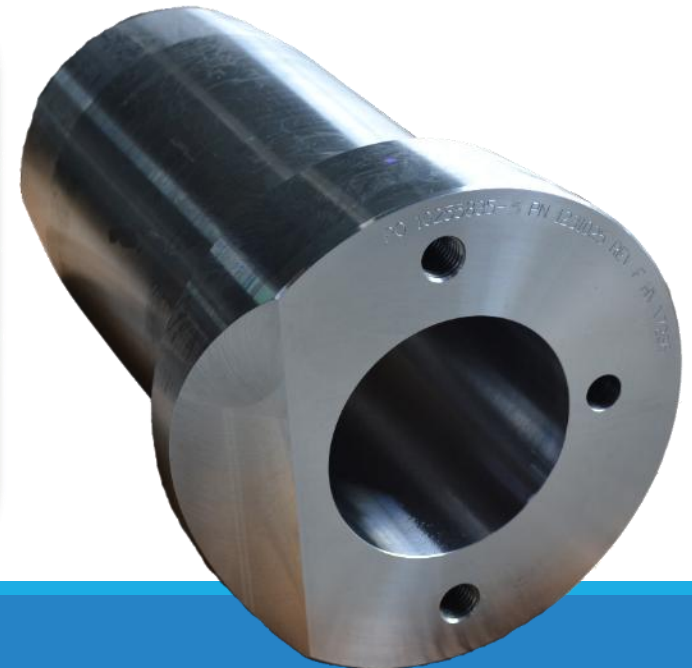
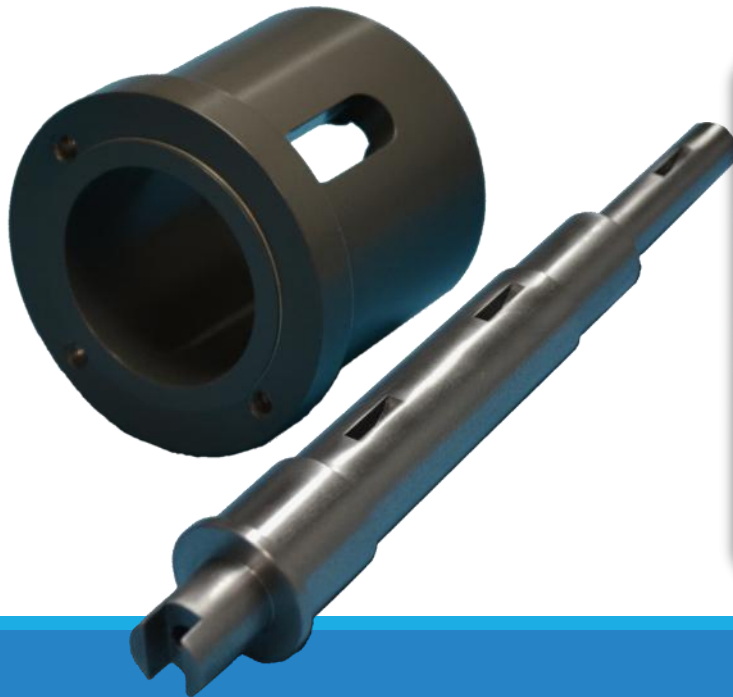
PROCESSES

TURNING

18 CNC Lathes

The capacity in CNC lathe is up to $\varnothing 32''$ in vertical turning. And shafts up to 53'' length.

Experience with different threads including ANSI, ISO, API, ACME, STUB ACME, NPT, BSPT





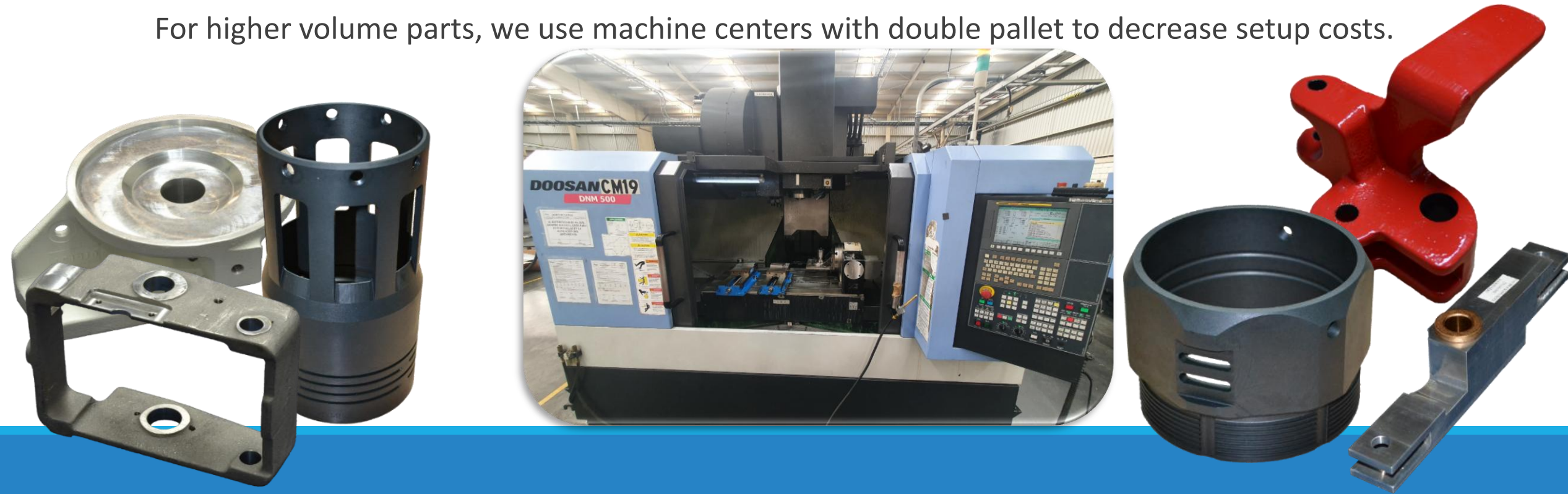
PROCESSES

MILLING

30 Machining Centers

We have Vertical and Horizontal Machine Centers, most of them equipped with 4th Axis.

For higher volume parts, we use machine centers with double pallet to decrease setup costs.



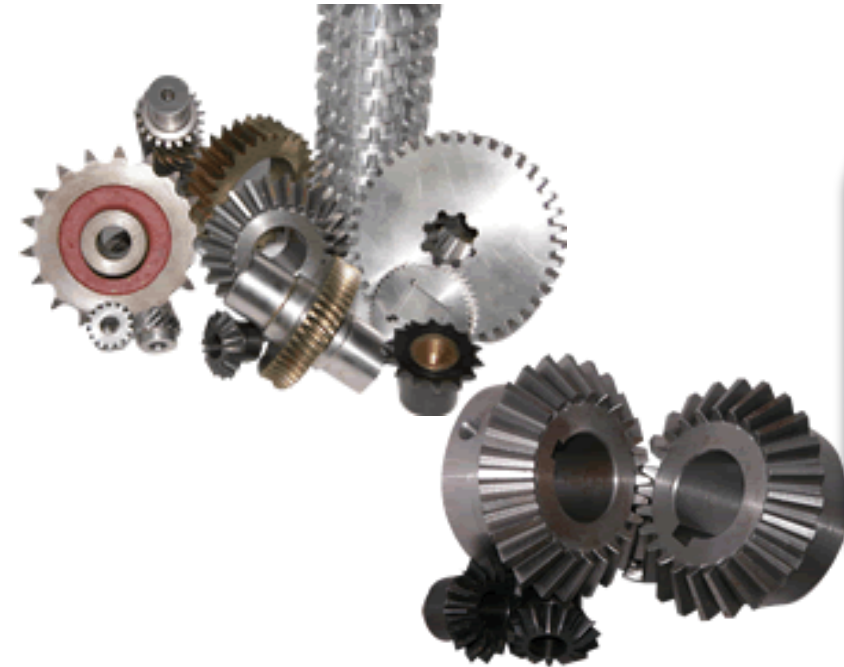


PROCESSES

GEAR MANUFACTURING

We can make, spurs, helical, bevel, worm gears, racks, and internal splines

The capacity is up to 2.5 m Diameter. AGMA 8 Quality level.





PROCESSES

Additional processes we offer:

Broaching - Cylindrical Grinding - Bandsaw cutting - TIG & MIG welding - Brazing - Sand Blast - Minor Assemblies





QUALITY CONTROL

Quality measures the first part of the setup and the first part of every shift. Operator inspects during process, and quality performs a final inspection before packing, to ensure that our final product meets all the tolerances and requirements the designer intended on the drawing. Inspection records and other certificates are maintained on our server.

We utilize a CMM machine, Optical comparator, Surface Roughness tester, among other precision equipment to have the certainty that our products meet a guaranteed quality.

CPK studies can be performed when requested by our customer.





MAIN CUSTOMERS



JOHN DEERE

WOLONG



flex



NEW CUSTOMERS



AMETEK



rexroth
A Bosch Company



HISTORIC SALES

