



SLT

OVER 30 YEARS
MEETING GOALS

NOE



GEOGRAPHIC ADVANTAGE

We are leaders in the border area, we are in places where the commerce and movement of goods are internationally:

- Ciudad Juárez
- Chihuahua
- El Paso Tx.
- Torreón

We coordinate the **movements of goods** of high value between the United States and Mexico, **through** El Paso, Texas.



SPECIALIZED LOGISTICS

The updating and training are constant in our staff:

- We use state-of-the-art technology that your cargo travels safely, from door to door.
- Monitoring 24/7 between Mexico - United States.

Your operation is **always** safe, being that all the equipment is completely owned 100% by SILT:

- Our fleet consists of more than 450 trailers and 1,200 Dry-Van 53'. Our trailers are renewed on average every 5 years to guarantee the customer – the latest equipment to provide excellent service.



MEXICO - OPPORTUNITIES AND ROUTES

- International Crossing between Ciudad Juárez - El Paso, Tx.
- K9 checkpoints in our installations, and the international bridges of Córdoba and Zaragoza in Cd. Juarez.
- El Paso Tx. and Santa Teresa in New Mexico Railway Service.
- Leasing of Dry-Van 53' for crossing, warehouse, Flatbed and LowBoy.
- Expediated service by land and air Hand-Carrier.
- Hazardous Waste Transportation Service Hazmat, and Non-Hazardous SCRAP.
- Security guard escort Service for Shipments at client's request.
- National Service in Mexico and the US; daily, weekly, monthly reports of movements for customers.
- In house SILT system (for Monitoring and registration of all movements 24/7).
- Fleet Administration.

SELF-FUEL CONSUMPTION

We have our own Diesel station in Cd. Juarez, which helps our clients with faster service and enhanced safety.

We also have our own Washing Machine for trailers and Dry-Van 53' also located in Juarez, and which uses recycled water for 6 months, which helps us be a more environmentally friendly company.





Equipment



Trucks



Faltbed and Low Boy



53 Ft Dry Van



Small Truck



Pick-up 3.5 Ton.



Services USA



Local movements in El Paso



Longhaul - Intra USA



Lease of Flatbed and Low Boy



Drayage



Hazmat Transportation



Hand Carrier



Bonded Carrier & TSA Certified





We compliment services that facilitate their additional requirements:

- Rent of Dry-Van 53' for Border Crossing, Warehouse and Local
- Local Movements in El Paso Tx and throughout the US
- Leasing of Flatbeds and Lowboys
- As well as space rental in El Paso Tx for storage of Dry-Van 53'





After being founded in 1994, SILT has expanded into a Bi-national asset and non asset based multi-entity logistics and transportation Company.





FACILITY SPECS

9525 Plaza Cicle ELP 79927



- 2 MILES FROM YSLETA PORT OF ENTRY
- 2.5 MILES FROM BOSCH PLANT 2
- RIGHT ON MAIN HIGHWAY CONECTED TO MAIN INTERATIONAL BRIDGES
- 104,000 SQ FEET OF WAREHOUSE
- FULL CCTV
- FTZ
- SPRINKLERS FP SYSTEM
- OPEN FLOOR SPACE
- 18,500 PALLET POSITION CAPACITY
- CTPAT APPROVED
- BUILT 2021
- 21 DOCK DOORS
- HOP M-F 07:1700
- 32 FT HEIGHT



AIRPORT AREA ELP



5 founders Blvd. ELP 79906

- 65,000 SQ FEET OF WAREHOUSE
- FULL CCTV
- SPRINKLERS FP SYSTEM
- 50% RACKED & EQUIPPED
- 6,500 PALLET POSITION CAPACITY
- CTPAT APPROVED
- BUILT 2009
- 10 DOCK DOORS
- SECURE YARD
- HOP M-F 08:1700
- 28 FT HEIGHT

YSLETA AREA ELP



9525 Plaza Circle ELP 79927

- 104,000 SQ FEET OF WAREHOUSE
- FULL CCTV
- FTZ
- SPRINKLERS FP SYSTEM
- FULLY RACKED & EQUIPPED *Ordered
- 8,500 PALLET POSITION CAPACITY
- CTPAT APPROVED
- BUILT 2021
- 21 DOCK DOORS
- HOP M-F 08:1700
- 32 FT HEIGHT

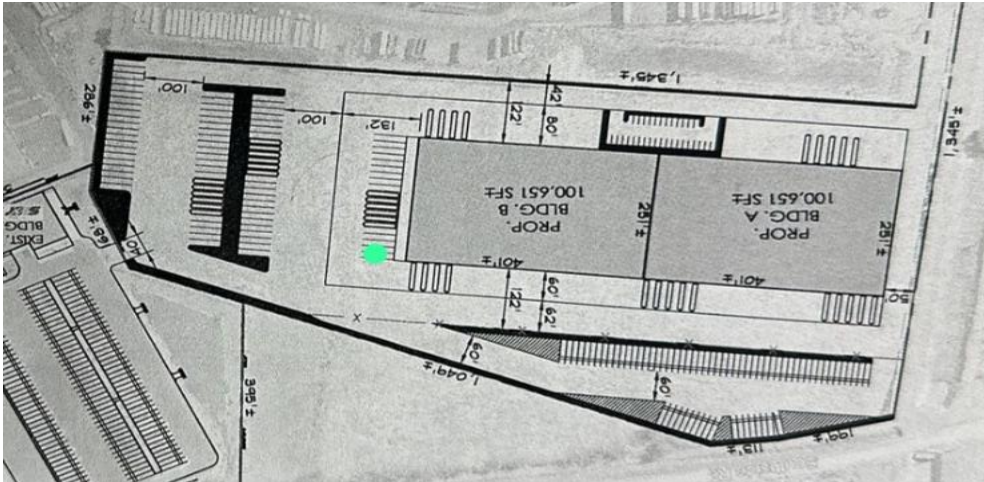


SILT ELP-STNM FACILITIES PROJECTED FACILITY GROWTH



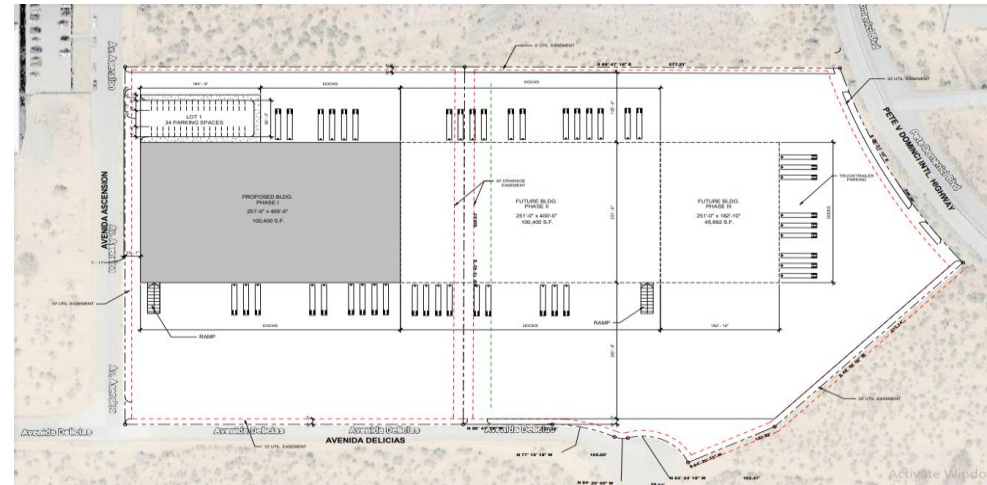
YSLETA AREA ELP PROJECTED GROWTH

SANTA TERESA NM PROJECTED GROWTH



YSLETA EXPANSION

- 200,000 SQ FEET OF WAREHOUSE
- FULL CCTV
- SPRINKLERS FP SYSTEM
- 14,500 PALLET POSITION CAPACITY
- CTPAT APPROVED
- BUILT 2024
- 30 DOCK DOORS
- SECURE YARD
- 32 FT HEIGHT



STA TERESA EXPORT

- 240,000 SQ FEET OF WAREHOUSE
- FULL CCTV
- FTZ
- SPRINKLERS FP SYSTEM
- FULLY RACKED & EQUIPPED *Ordered
- 20,500 PALLET POSITION CAPACITY
- CTPAT APPROVED
- PROJECTED BUILT 2024
- 36 DOCK DOORS
- 32 FT HEIGHT

JUAREZ FACILITIES

VESTA PARK JUAREZ MEXICO



10051 Blvd. Talamas Camandari 32560

- 65,000 SQ FEET OF WAREHOUSE
- FULL CCTV
- FULLY RACKED & EQUIPPED
- 7,500 PALLET POSITION CAPACITY
- CTPAT APPROVED
- BUILT 2019
- TRUCK YARD
- 7 DOCK DOORS



TORRES INTERMEX JUAREZ MEXICO



- 72,000 SQ FEET OF WAREHOUSE
- FULL CCTV In progress
- FULLY RACKED & EQUIPPED *Ordered
- 9,500 PALLET POSITION CAPACITY
- CTPAT APPROVED
- BUILT 2023
- TRUCK YARD
- 9 DOCK DOORS
- PFS



INVENTORY MANAGEMENT SYSTEM



Inventory Control Software Designed for our Operation to meet your operations demand, Built with knowledge collected from Experts in inventory client use cases, our physical inventory systems come out of the box ready to improve the way you do business and the way we are in compliance

- Many years experience in Distribution services including VMI Hubs with a proven track record
 - Versatile inventory management system
 - System can handle any unit of measure
 - FIFO any unit of measure
 - Cycle count procedures customized to our customers
- Real Time Web access to your inventory and reports 24/7/365
 - FIFO capability – LIFO or a combination
 - Serial / Lot tracking /Part Number
 - Bar Coding and Scanning capabilities
- Full EDI connectivity and supports all EDI languages

VALUES

SILT CORPORATION guided by values that reflect professional ethics, excellent treatment with our business partners, employees, suppliers, and with society in general.

Future Orientation

Innovation

Responsibility

Transparency

Honesty

Trust

Credibility

And Legality





WE MET GOALS!

CD. JUÁREZ

Carretera Juárez Porvenir #991, Col. Zaragocita,
ZIP Code: 32550
Office: +52 (656) 295 4800
Ext. 2506 / 2547
Mobile: +52 (656) 300 0790
Mobile: +52 (656) 175 5796
ventas@siltcorp.com

EL PASO, TX.

9525 Plaza Circle Dr., ZIP Code: 79927
(915) 702 4349 / (915) 888 6816
sales.transportation@siltcorp.com
sales.logistics@siltcorp.com

siltcorp.com

TORREÓN

Calzada Manuel Gomez Morin Esq.
Calle Índigo S/N, Parque Industrial
Lajat, ZIP Code: 27259
Mobile: +52 (656) 638 0921

CHIHUAHUA CAPITAL

Retorno Jose Fuentes Mares #105,
Complejo Industrial Chihuahua,
ZIP Code: 31136
Mobile: +52 (614) 359 3160



THANK YOU!



Fernando Rodriguez

Cell:

+52 656 300 0790

Email:

fernando.rodriguez@siltcorp.com

