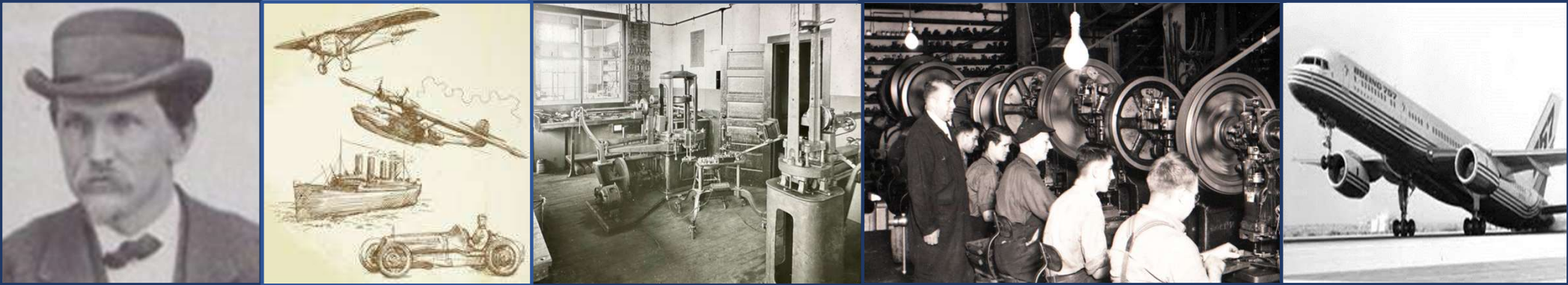




Associated Spring Company Overview 2025

The Associated Spring Legacy

1857



2025



168 Years of Innovation and Excellence in Quality

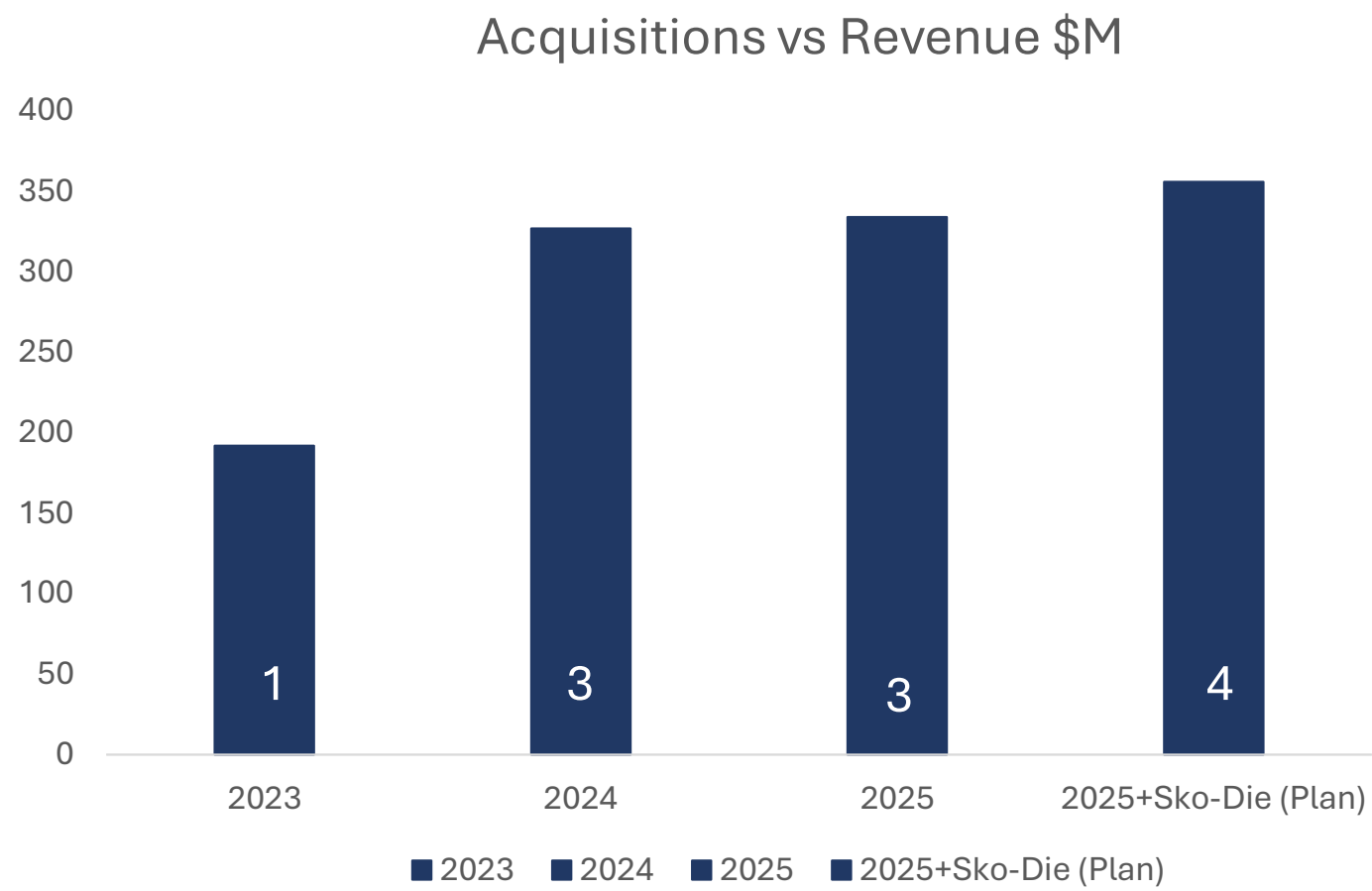
OneEquity

Associated Spring US, LLC



- OEP has \$12.5B invested in companies present in the Industrial, Healthcare and Technology markets
- Associated Spring owns five strong brands for different segments

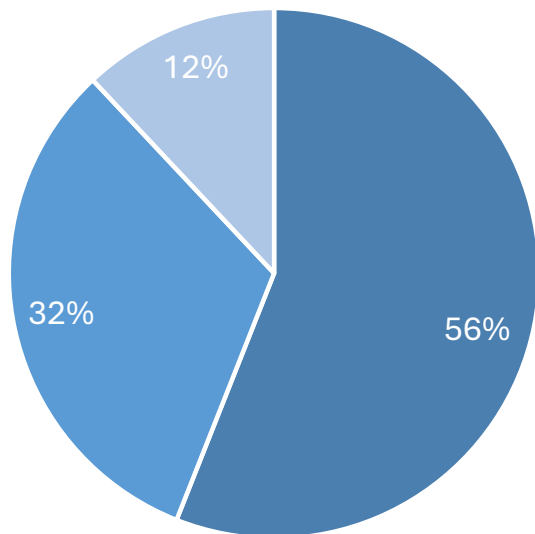
Growth Path (Organic + Inorganic)



Vision: Leading global company in precision springs and metal stamping which can create value for our customers in the Automotive, Medical, Aerospace, Defense, and Industrial segments

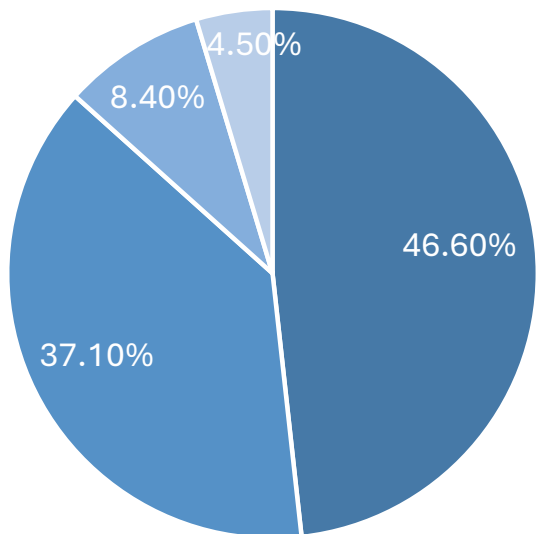
Sales and Mix Outlook

Revenue Per Segment 2025



■ Automotive ■ General Industry ■ Medical/A&D

Revenue Per Region 2025

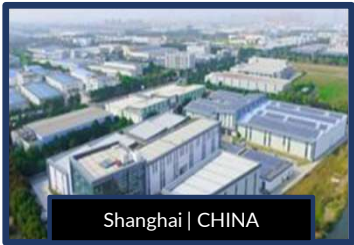


■ Europe ■ N. America ■ S. America ■ Asia

- Implement strategies to increase our position in Industrial, Medical and A&D markets - organically and inorganically
- Leverage our position in Auto BEV and HEV
- Focus on highly engineered products which demand strong technical capabilities

Associated Spring US, LLC. current global footprint

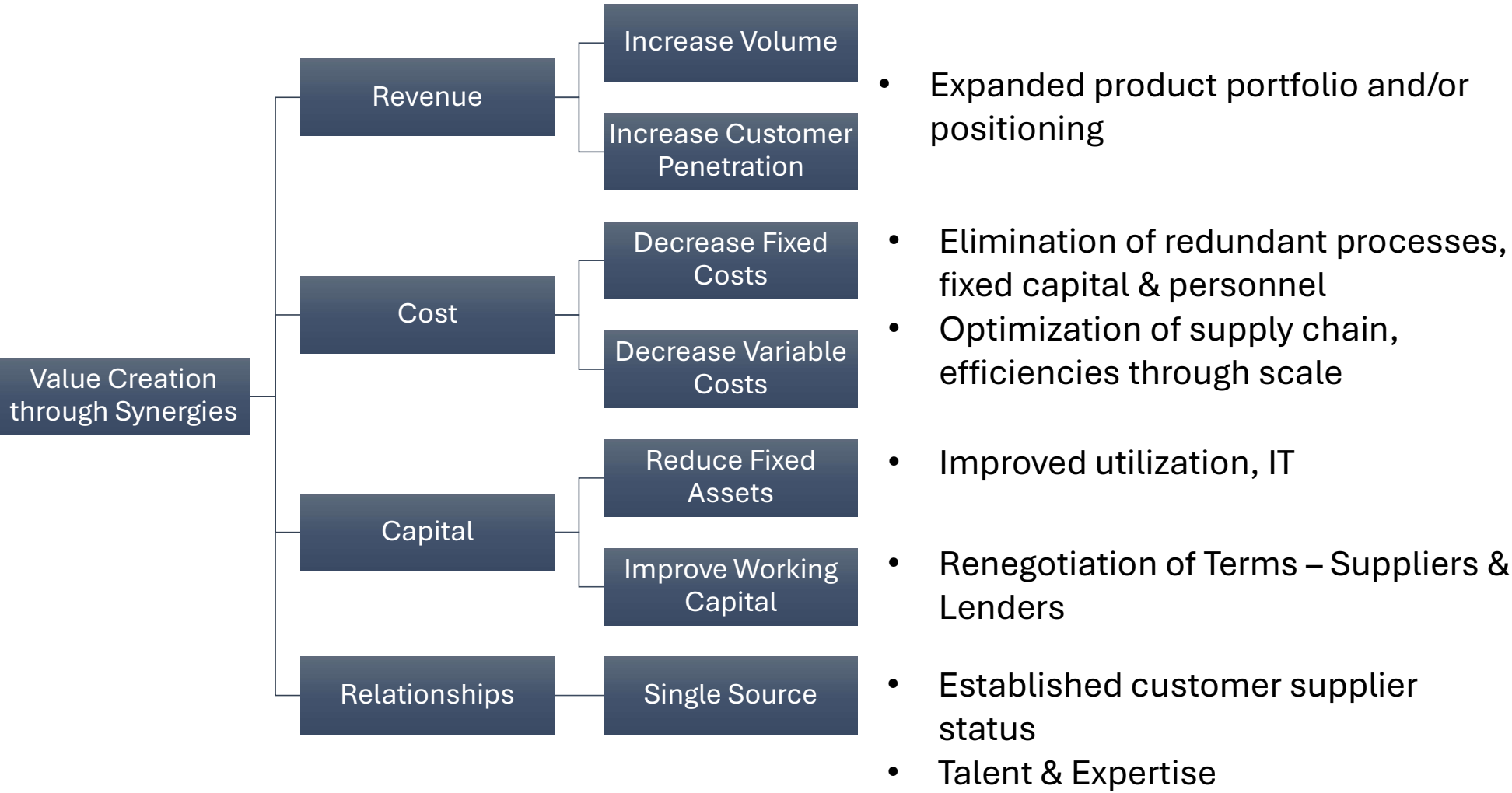
World Class Innovation, Quality and Customer Excellence
Global precision, local expertise



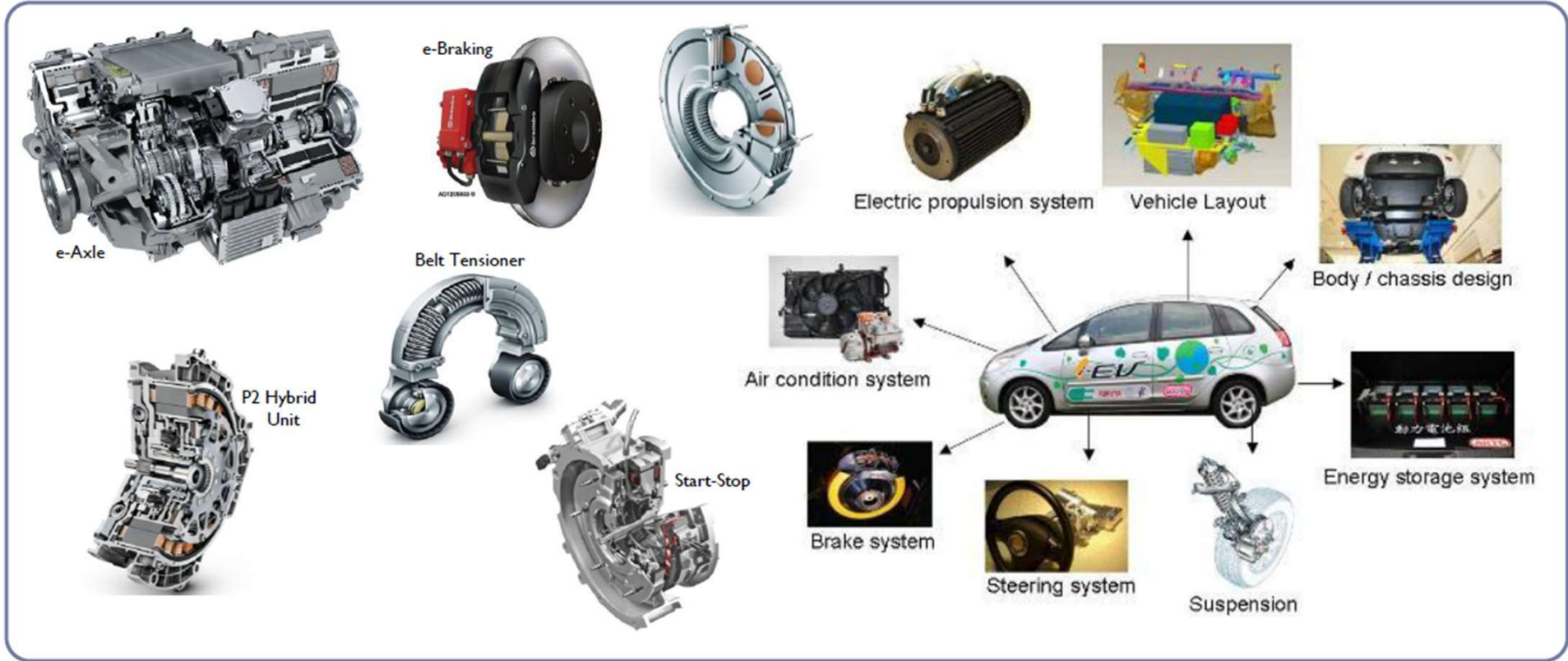
Synergies through M&A



Other
M&A Targets

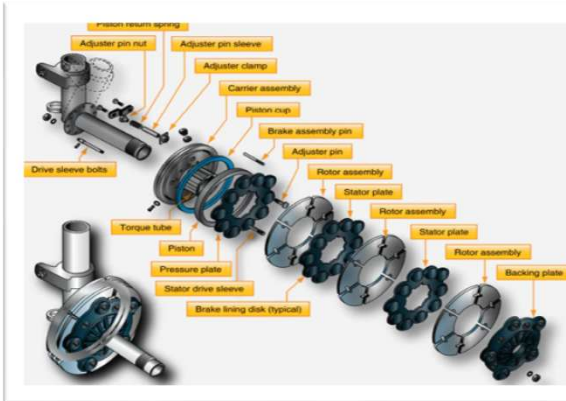


Broad Portfolio For The Automotive Segment



Broad Portfolio For The Aerospace Segment

- Engine Feed Switch
- Pressure Switches
- APU Transfer Switch
- Fuel Temperature Switches
- Entry Doors
- Cargo Doors
- Landing Gear
- Actuators
- Hinges
- Tail Fin Springs
- Sabot Springs
- Machined Springs
- Seats
- Seat Back Recline
- Leg Rest Extension
- Seat Pan Articulation
- Jump Seat
- Divan (Couch)
- Wheel & Brake



Broad Portfolio For The Medical Market

Our specialized springs and expertise provide a distinct advantage to our medical industry customers by recognizing the critical importance of precision, reliability, and biocompatibility in life-saving devices.

Associated Spring products can be found in devices throughout the operating room, or in managed care applications.

- Power springs
- Compression springs
- Micro coils
- Fine blanking
- Micro stamping
- Reed valves
- Wire forms
- Conventional stampings
- Torsion springs
- Electrical connectors
- Deep draw – ECG studs



Broad Portfolio For The Industrial Market

Our specialized springs and technical expertise deliver a unique advantage to our industrial customers by addressing the critical need for durability, precision, and performance in demanding applications.

Associated Spring products are engineered and manufactured to ensure decades of reliability in demanding applications

- Engine valve springs
- Transmission springs
- Fuel injector springs
- Oil pump springs
- Compressor reed valves
- Pressure relief valves
- Suspension springs
- Engineered stampings
- Belleville washers
- Retaining rings
- Belt tensioner extension springs



Associated Spring Products and End Markets



OUR CAPABILITIES

R&D

- Material Selection
- Finishing Processes
- Part Testing
- Assembly Support

Wire Products

- Compression
- Extension
- Torsion
- Micro Coiled
- Four Slide
- Wire Form

Flat Coil Products

- General Stampings (0.02 mm – 3 mm)
- Precision Stampings
- Spring Washers
- Micro Stamping
- Accordion Spring

INDUSTRIES SERVED



Medical



Aerospace & Defense



General Industrial



Mobility



Heavy Duty Truck



Recreation & Power Sports

PRODUCT RANGE



COMPRESSION SPRINGS



TORSION SPRINGS



ACUATE SPRINGS



WIREFORMS



EXTENSION SPRINGS



POWER SPRINGS



CURVED WASHERS



WAVE WASHERS



RETAINING RINGS



FLAT SPRINGS



FOUR SLIDE
COMPONENTS



CONSTANT
FORCE SPRINGS



PRECISION
STAMPINGS



BELLEVILLE
WASHERS



CLUTCH SPRING PACK

Hänggi: High Engineered Precision Stamped Parts



Development Systems

- Co-Create Drafting (ME10)
- Co-Create Modeling
- P-Cam (Erosion)
- Mastercam (CNC)
- FEM Simulation

R&D

- Material Selection
- Finishing Processes
- Part Testing
- Assembly Support

Coil Products

- General Stampings (0.02 mm – 3 mm)
- Precision Stampings
- Micro Stamping & Micro Piercing
- Micro Fine Blanking (0.5mm – 6mm)

INDUSTRIES SERVED



Medical



Mobility



Industrial High Tech



Watches

PRODUCT RANGE



PUNCHING



MICRO STAMPING



FINE BLANKING



MEDICAL APPLICATIONS



AH Metal: Leading developer & manufacturer of customized, precision stamped & deep drawn components



Our Capabilities

Prototyping

- Material Selection
- Manufacturing considerations
- Assembly Support
- Packaging Support

Stamping & Forming

- Precision Stampings
- Micro Stamping
- Deep Draw

INDUSTRIES SERVED



Medical



Electronics



Mobility



Energy

PRODUCT RANGE



Electrical Connectors



Hearing Aids



Micro Stamping



Deep Draw



Stampings



High Volume Production

E. Winkemann: Leading manufacturer of precision stamped parts



Our Capabilities

Prototyping

- Tool Shop

Stamping

- 50 to 500 Ton

Fine Blanking

- 320 to 700 Ton

- Deburring
- Surface Grinding
- Heat Treatment
- Brushing
- Assembly
- Automatic Sorting

INDUSTRIES SERVED



Mobility

PRODUCT RANGE



Gearbox Applications

Engine & EV Applications

Adjusting Washers

Chassis Applications

Sko-Die: Industry Leading Stamped / Fine Blanked / Laser Cut Components



Our Capabilities

Prototyping

- Tool Shop

Stamping

- 5 to 440 Ton

Fine Blanking

- 160 to 250 Ton

Stamping
Fine Blanking
Laser Cutting
Notching
CNC Machining
Welding

INDUSTRIES SERVED



Medical



Aerospace & Defense



General Industrial



Mobility



Power Generation

PRODUCT RANGE



Electric Motor Laminations

Heavy Gage Stampings

Fineblank Components

Consumer Products

One Stop Shop – Innovation to Production



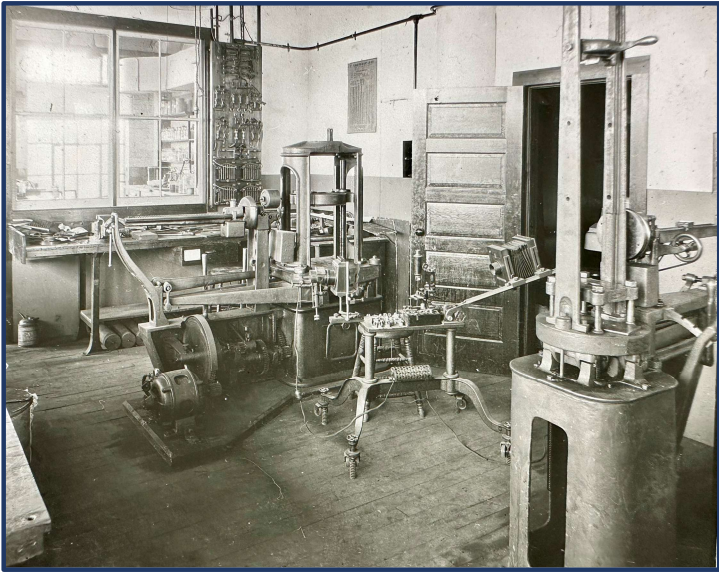
State Of The Art Facilities Fully Certified



Advanced Engineering Laboratory

AS R&D Lab First Established in Detroit, 1926

The Advanced Engineering Laboratory is located at the Milwaukee, WI facility and supports Associated Spring customers and locations worldwide with design, analysis, testing, manufacturing, quality and program management.



FEA Stress Analysis



Scanning Electron Microscope



Cycle Testing

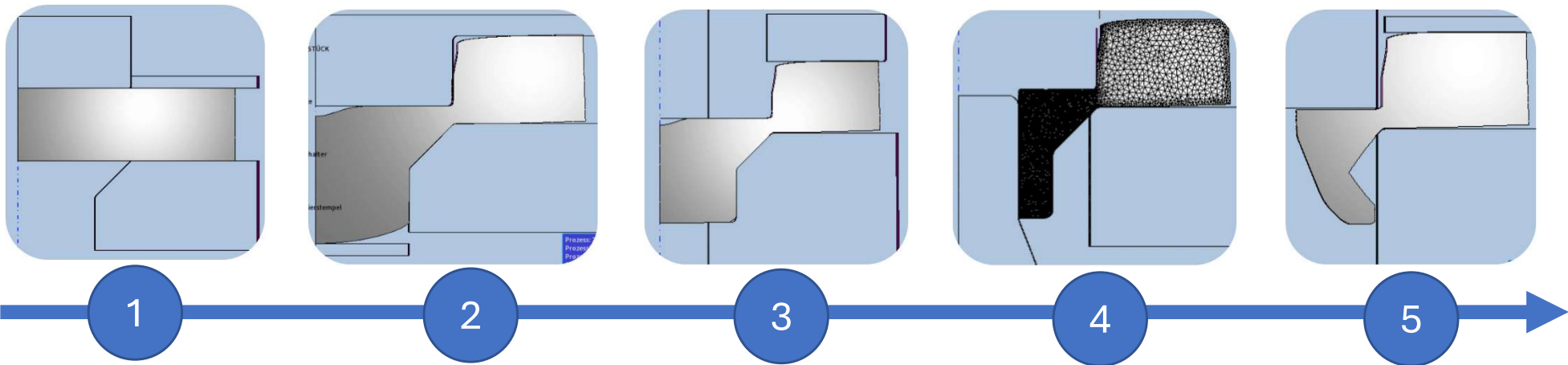


3D Printing

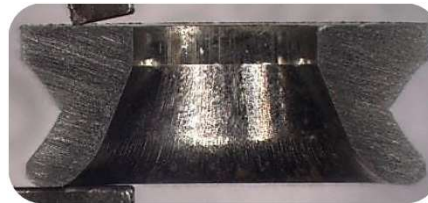
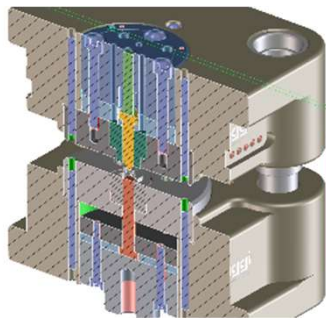
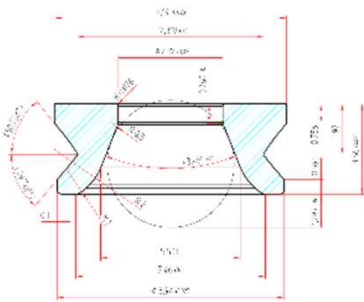


X-ray Diffraction

Firing Unit for Epinephrine Auto-Injector



FEM-Analysis



Design Proposal

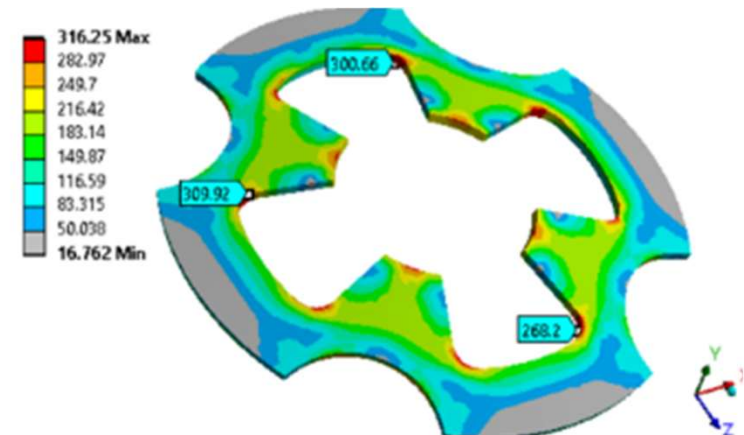
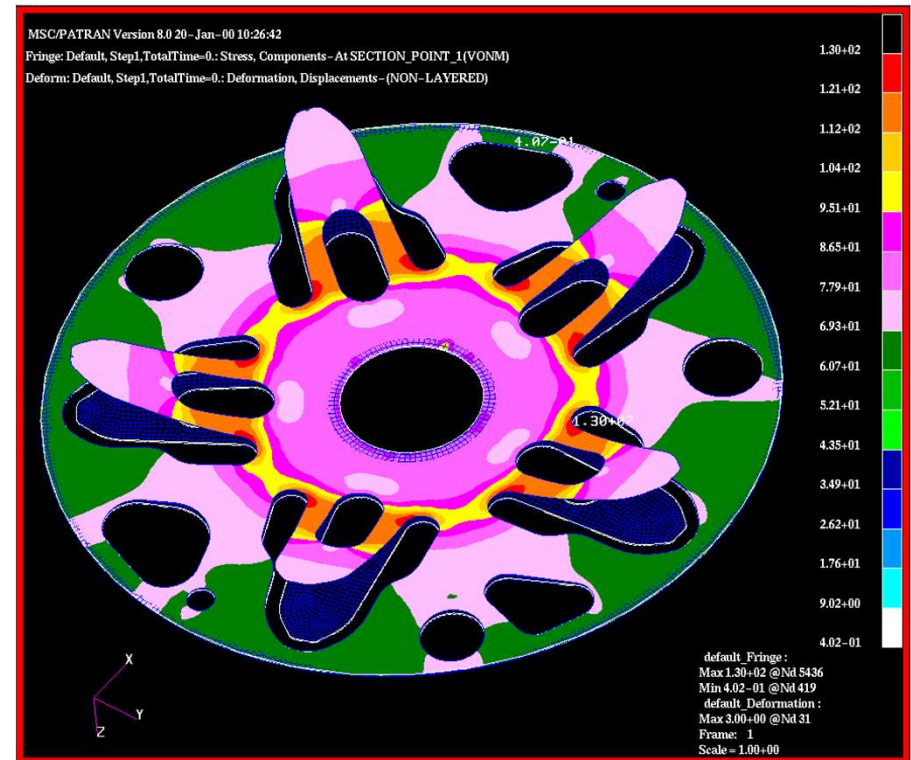
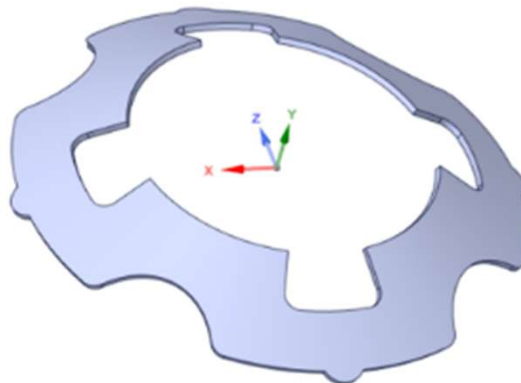
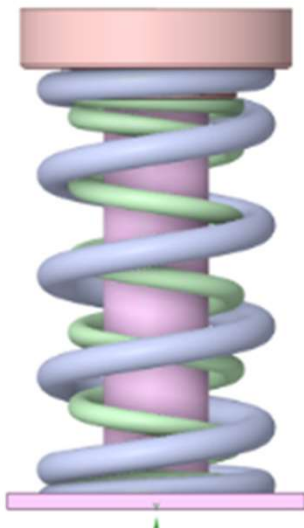
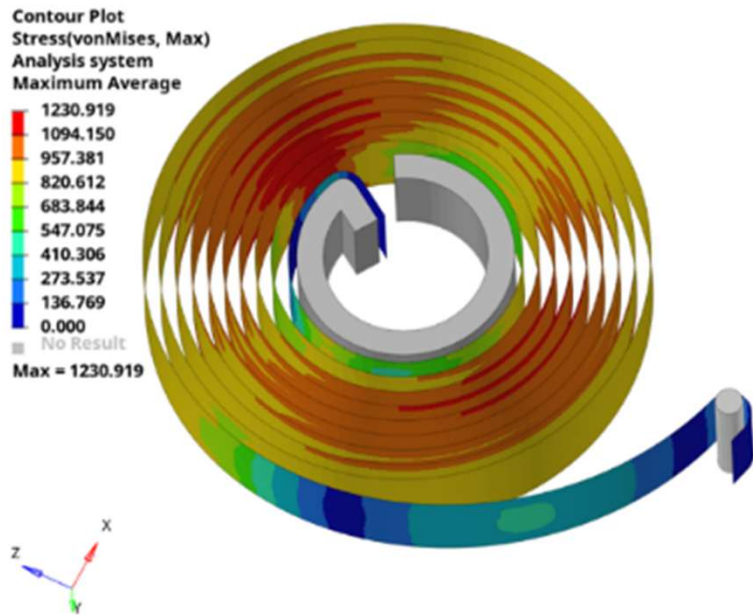
Tool design

Prototypes

Serial Production

Design Analysis & Computer Simulation

Applied displacement x Stress analysis



Key Customers

