



**MOUTON**  
ENGINEERING SYSTEMS



MOUTON PERFORMANCE - M

**MOUTON**  
**ENGINEERING SYSTEMS**



# **CORE STATEMENTS**



**MT**

**"BECAUSE QUALITY MATTERS"**

**M**

**BUILD A SUSTAINABLE AND  
PROFITABLE COMPANY BASED ON  
CUSTOMER EXPERIENCE.**

**V**

**LEAD THE INDUSTRY OFFERING  
CUTTING EDGE ENGINEERING  
SOLUTIONS.**



# **CORE STATEMENTS**



MOUTON PERFORMANCE - M

**MT**

**"HANDCRAFTED HIGH  
PERFORMANCE"**

**M**

**EMPOWER OUR INNER SELVES  
WHILE PUSHING TECHNOLOGY  
BEYOND.**

**V**

**CREATE A SUSTAINABLE  
WORLD, ONE IDEA AT A TIME.**

# OUR CORE VALUES

**DILIGENCE**

**ACCURACY**

**PASSION**

**INNOVATION**

**COMMITMENT**

**INTEGRITY**

**HUMILITY**

**TEAM-  
WORK**





# WHERE ARE WE FROM?

WE ARE PROUD OF BEING MEXICAN BUT WE'RE MORE PROUD OF BEING  
FROM CHIHUAHUA.  
WE ARE LOCATED IN.  
VALLE DE SANTA CECILIA 17350 (VALLE DE SAN PEDRO)  
CHIHUAHUA, CHIH.  
MEXICO, 31125







# MOUTON'S HISTORY

MOUTON ENGINEERING SYSTEMS STARTS AS A BUSINESS IDEA A BIT FAR FROM WHAT WE KNOW TODAY. IT WAS IN A MONTH OF DECEMBER 2018 WHEN OUR DIRECTOR IVAN REYES BEGAN TO INCUBATE THE IDEA OF WHAT TODAY WOULD BE A LIFE PROJECT, UNDER THE NAME OF M/P MOUTON PONS, A BIT FAR-FETCHED THE NAME WITHOUT KNOWING THE BACKGROUND OF WHY OUR LOGO "MOUTON" AND THE ORIGIN OF THE TWO HORSES IN OUR SHIELD.

IT WAS ALMOST 6 YEARS AGO WHEN WE DEFINED THE COMPANY'S MAIN LINE OF BUSINESS, WHICH IS STILL NOT THE OBJECTIVE LINE OF BUSINESS WE HAVE IN MIND.

"A DESIGN HOUSE TO DEVELOP THE FIRST SPORT BIKE TO EXCEED 417 KM/HR (MP417 RSB), MP 417 RACING STREET BIKE, WOULD BE OUR CORNERSTONE.





# MP & MES HISTORY

MOUTON COMES FROM THE NAME OF THE FIRST WORLD CHAMPION IN THE WORLD OF RALLYING IN THE GROUP B ERA, MICHELE MOUTON IS CONSIDERED TO THIS DAY THE WOMAN DRIVER WITH THE MOST PROLIFIC CAREER IN THE WORLD OF AUTOMOBILE RACING.

THE MAIN GOAL OF MOUTON PERFORMANCE-M WAS ALWAYS TO THINK, DESIGN, BUILD, HOWEVER DUE TO THE EXISTING WORKLOAD CONDITIONS WE OPTED TO PAUSE ALL THIS, GAIN MOMENTUM AND RE-EMERGE.

MOUTON PERFORMANCE-M HAS BEEN OPERATING CONTINUOUSLY SINCE MAY 2021 BEING THE CONNECTION POINT BETWEEN OUR CURRENT CUSTOMERS AND SUPPLIERS, HOWEVER THINGS WOULD CHANGE A BIT MORE ON AUGUST 8, 2023 WHEN MOUTON ENGINEERING SYSTEMS WAS BORN.





## Fast Ordering Process

- Due to our client satisfaction standard processes, fast processing of all orders is priority.

## Material Compliance

- We adapt to the client. If possibilities are in our hands we stick to the client requirements as much as possible.

## Low Time Part Production

- All prices are offered at fair times. We strive for perfection and low time production.

## Low Assembly Lead Time

- We stick as much as possible to the schedule. We strive for perfection and low time production.

## Revisioning

- We do offer constant revisioning for all our clients, this way we can ensure 100% satisfaction in all our works.

## Worldwide Export

- We have the hability and the strategic partners to export worldwide, however our main markets are located in Germany, U.S.A and México.

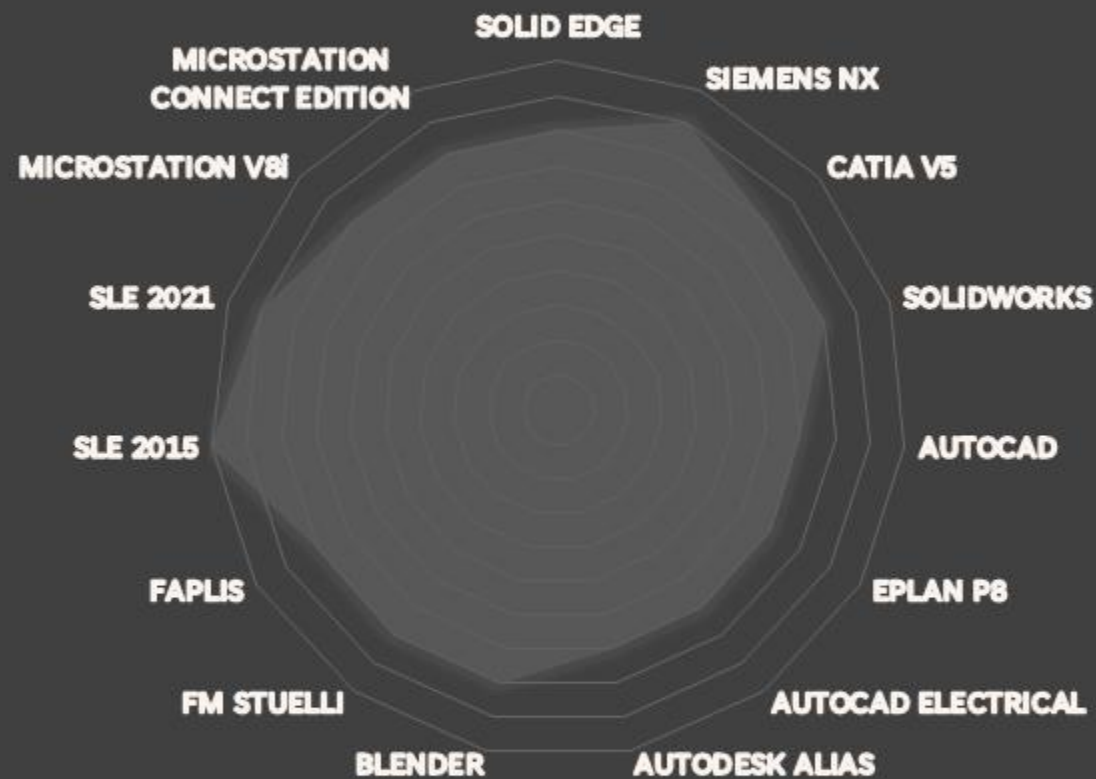
## Warranty

- Client satisfaction and Good service are our top priorities, we do offer a variable design and revisión warranties for all our Works.

# PRODUCTION CAPABILITIES



# SOFTWARE CAPABILITIES







## WE WORK THE FOLLOWING PLATFORMS

### **CAD/CAM/CAE**

#### **PARAMETRIC**

- SOLIDWORKS
- AUTOCAD
- SOLID EDGE
- NX
- CATIA V5
- ANSYS WORKBENCH

### **ELECTRICAL**

#### **(ECAD)**

- AUTOCAD ELECTRICAL
- EPLAN P8

### **DOCUMENTATION & MANAGEMENT**

#### **TECHNICAL**

- SLE INTEGRA  
2015 & 2021
- MICROSTATION
- PRISMA/ CARISMA
- FAPLIS

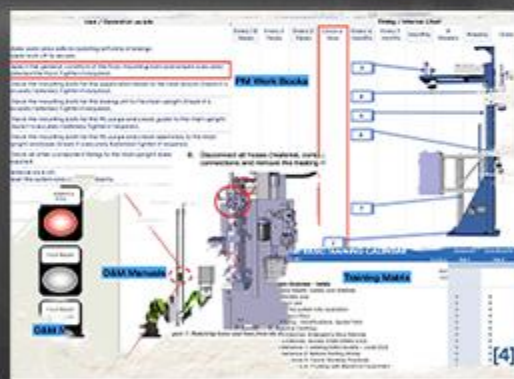
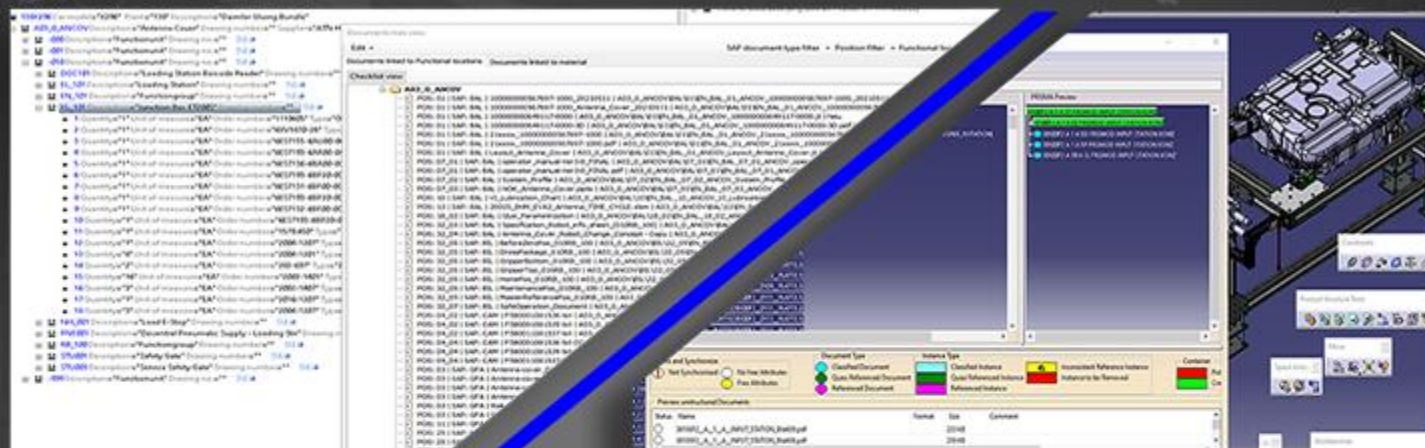
### **CONCEPT DESIGN**

#### **CREATIVE**

- SKETCH CONCEPT
- CLAY MODELLING
- AUTODESK ALIAS
- BLENDER



# DOKU & MANAGEMENT OVERVIEW



## MICROSTATION

- LAYOUT DESIGN MANAGEMENT
- DAIMLER INTEGRA STANDARD PLANT LAYOUT MANAGEMENT
- FAPLIS

## FAPLIS

- MICROSTATION PLANT LAYOUT IMPLEMENTATION ACC. FAPLIS
- STANDARDS/ DAIMLER LAYOUT/ DRAWING

## SLE/ DAIMLER 2015 & 2021

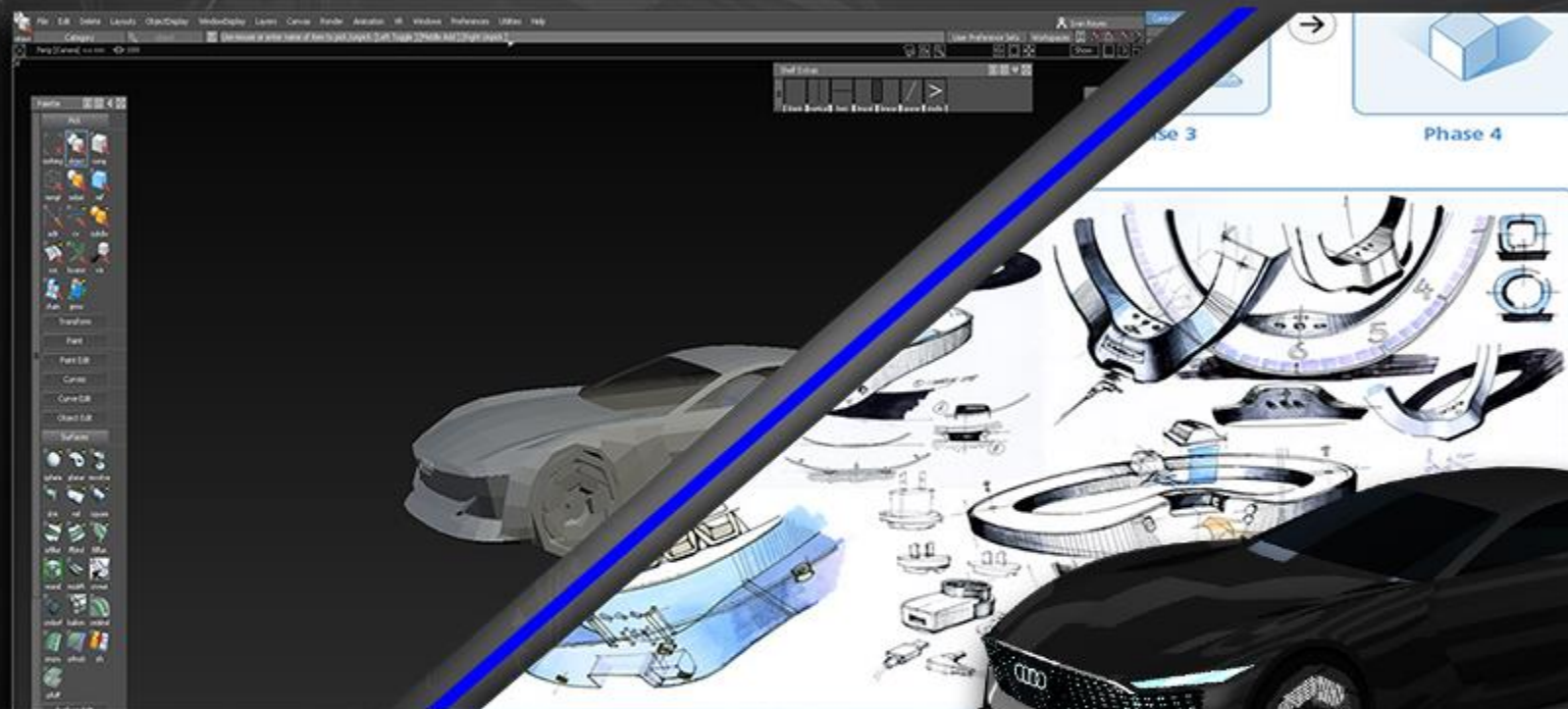
- SLE TECHNICAL DOKU MANAGEMENT
- CELL DESIGN IMPLEMENTATION (NX VS SLE)
- DIGITAL WORKSPACE

## PRISMA CARISMA/ BMW

- PRISMA/ CARISMA BMW TECHNICAL DOKU MANAGEMENT
- CELL DESIGN IMPLEMENTATION (CATIA V5 VS PRISMA)/ PANAMA



# CREATIVE OVERVIEW (CONCEPT DESIGN)



## AUTODESK ALIAS

- SUBD & NURBS SURFACE MODELLING
- CONCEPT DESIGN
- 3D RENDERING
- A CLASS SURFACE

## BLENDER

- POLYGONAL MODELLING
- CONCEPT DESIGN
- 3D RENDERING

## CONCEPT DESIGN

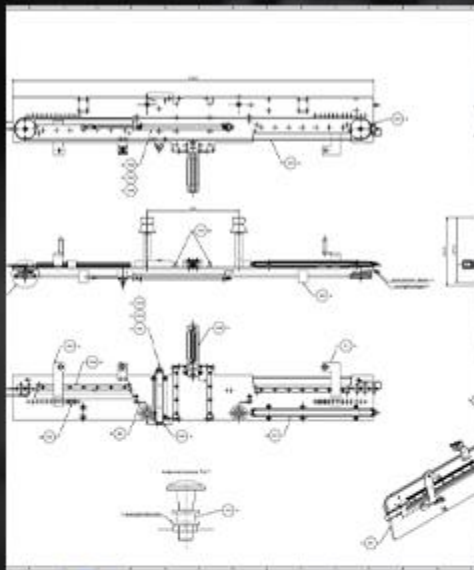
- SKETCH TO 3D CONCEPT DESIGN
- PRODUCT DESIGN

## CLAY MODELLING

- PRODUCT DEVELOPMENT
- REVERSE ENGINEERING
- CONTINUOUS PRODUCT IMPROVEMENT ANALYSIS

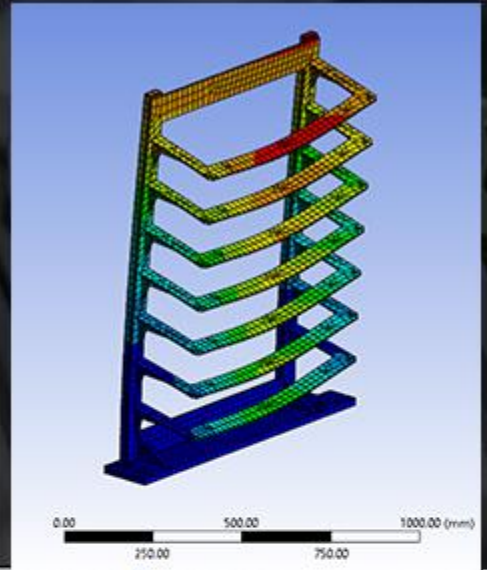
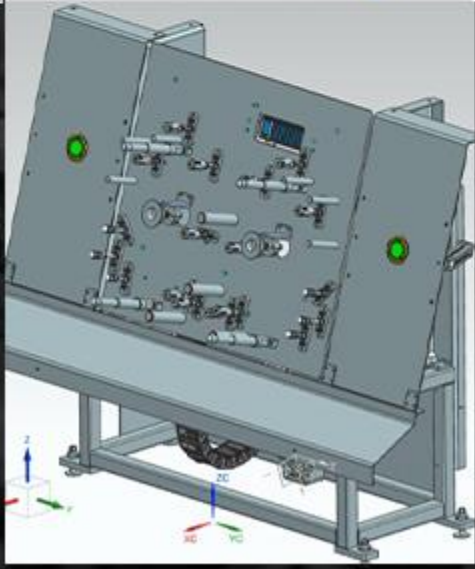


# MECHANICAL DESIGN WORKFLOW



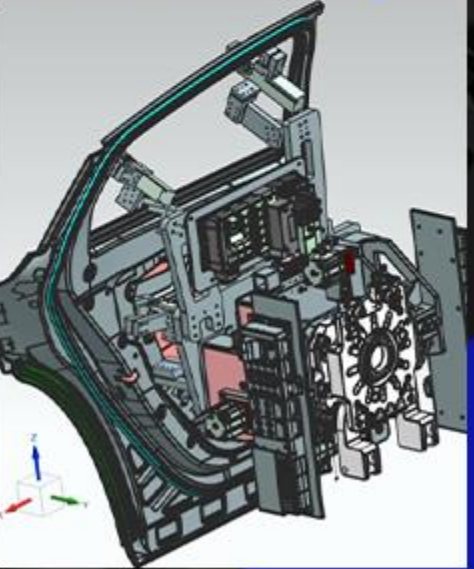
**1**  
MODELING &  
DRAFTING

**MACHINE  
DESIGN &  
DEVELOPMENT**  
**2**

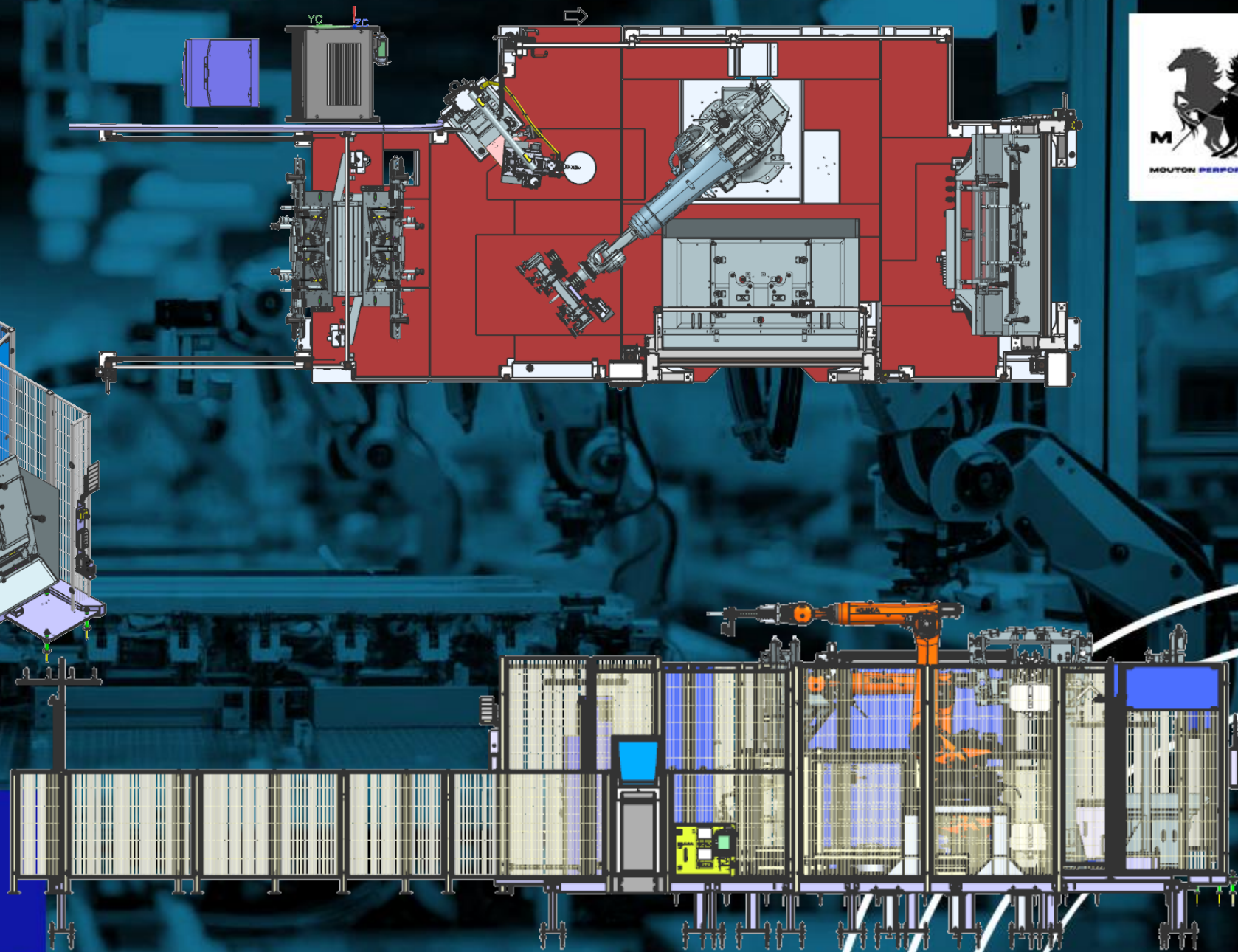
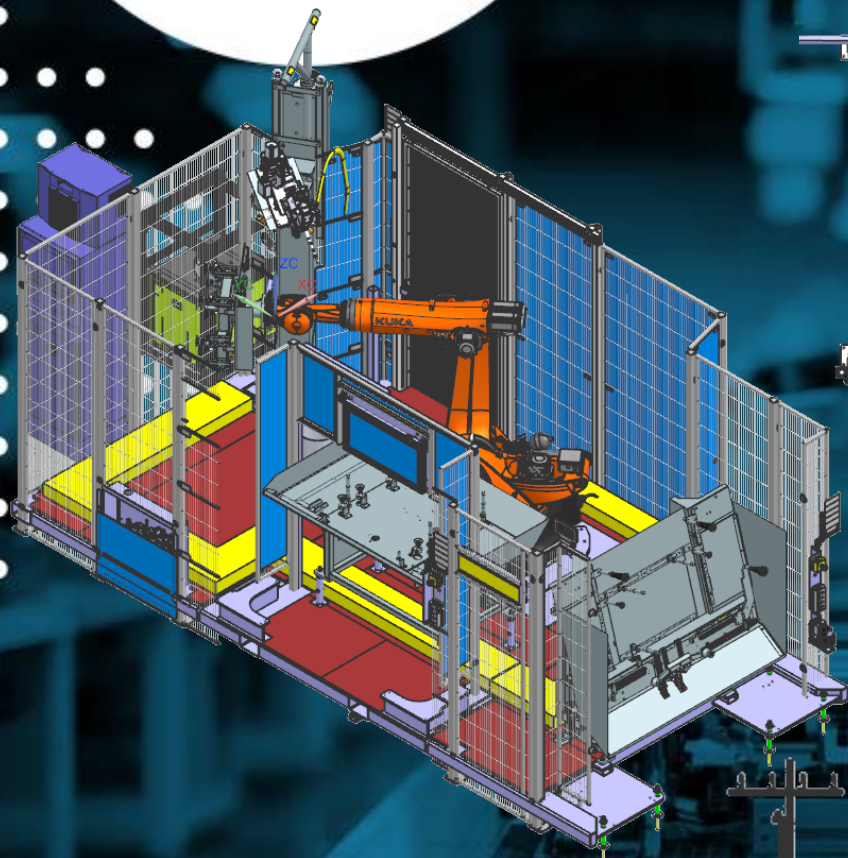


**3**  
SIMULATION &  
DESIGN  
OPTIMIZATION

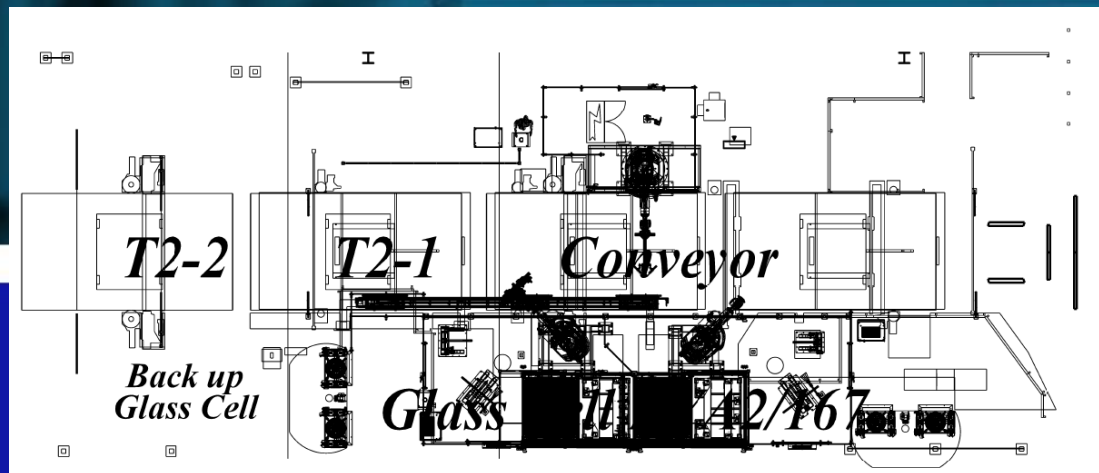
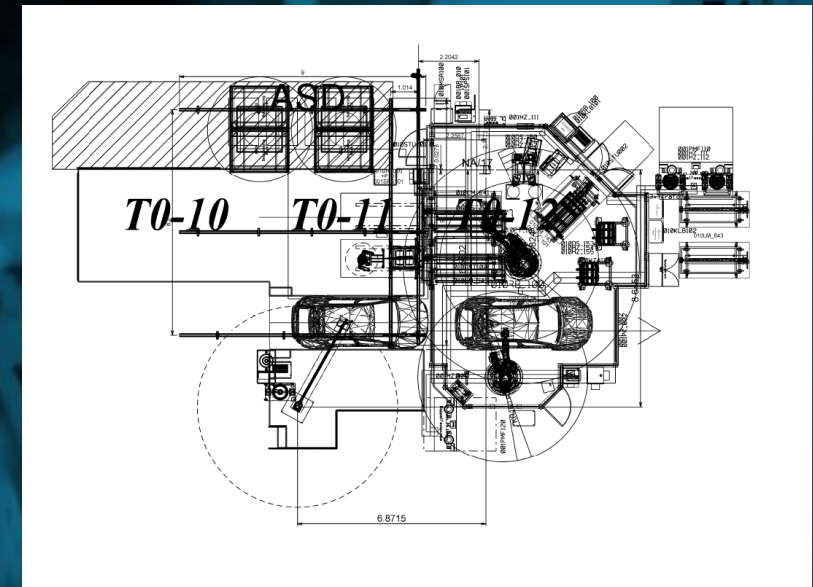
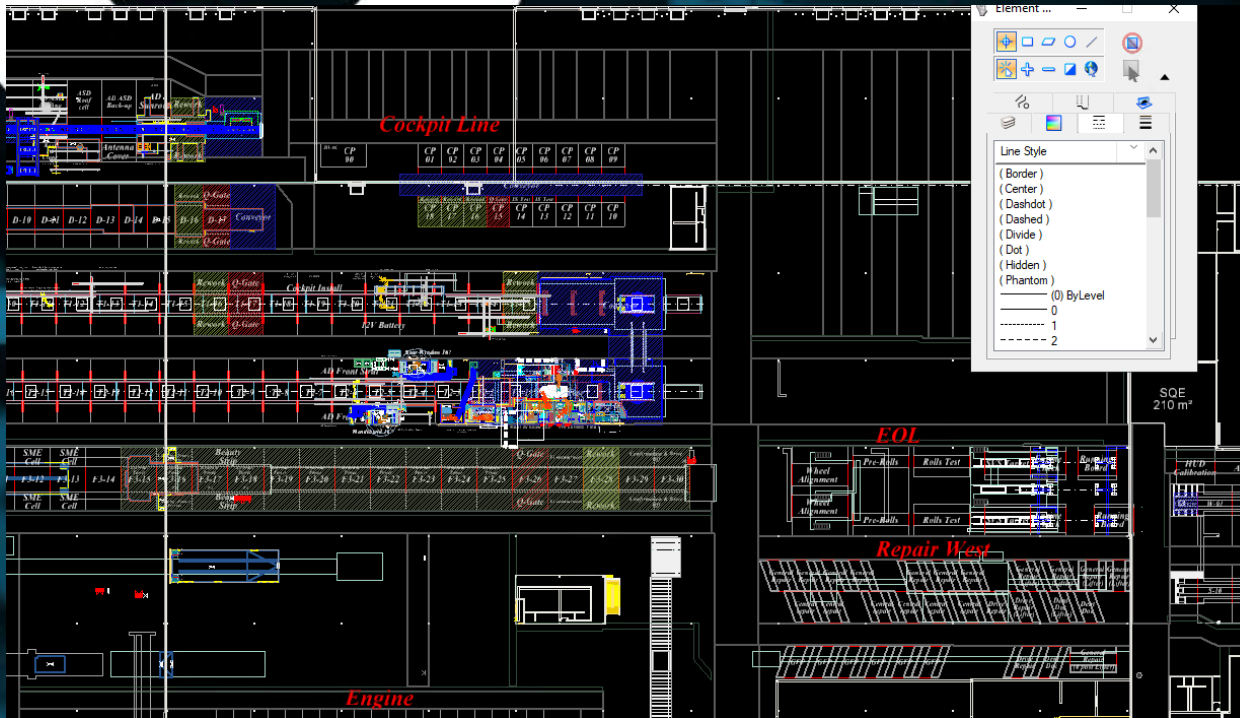
**DESIGN  
REVISION**  
**4**



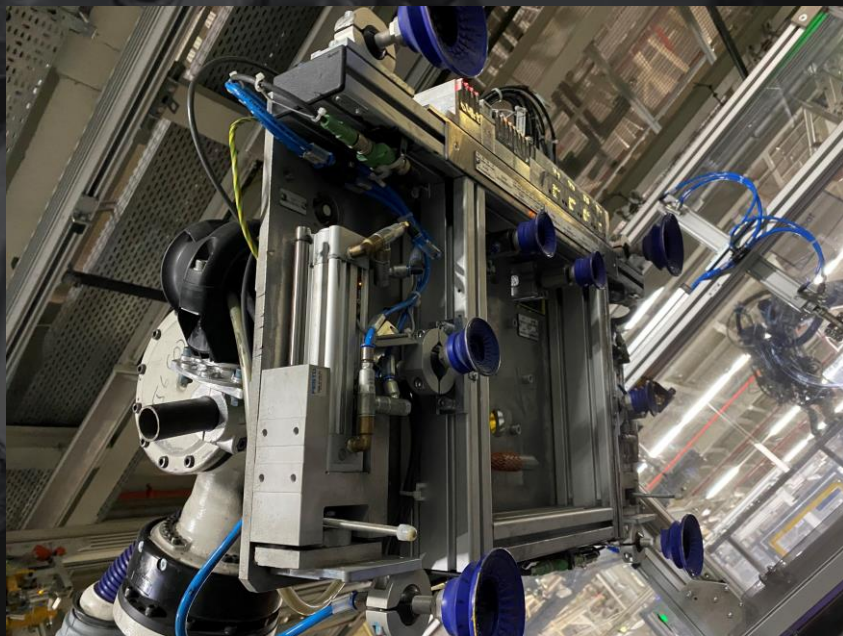
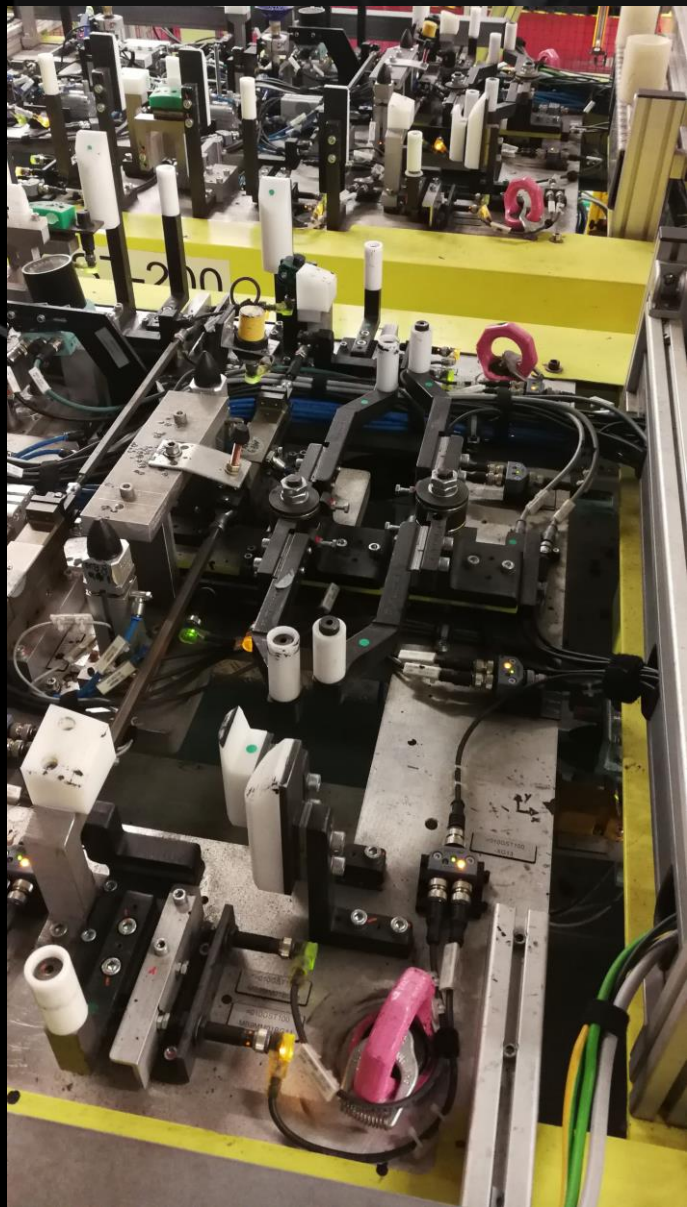




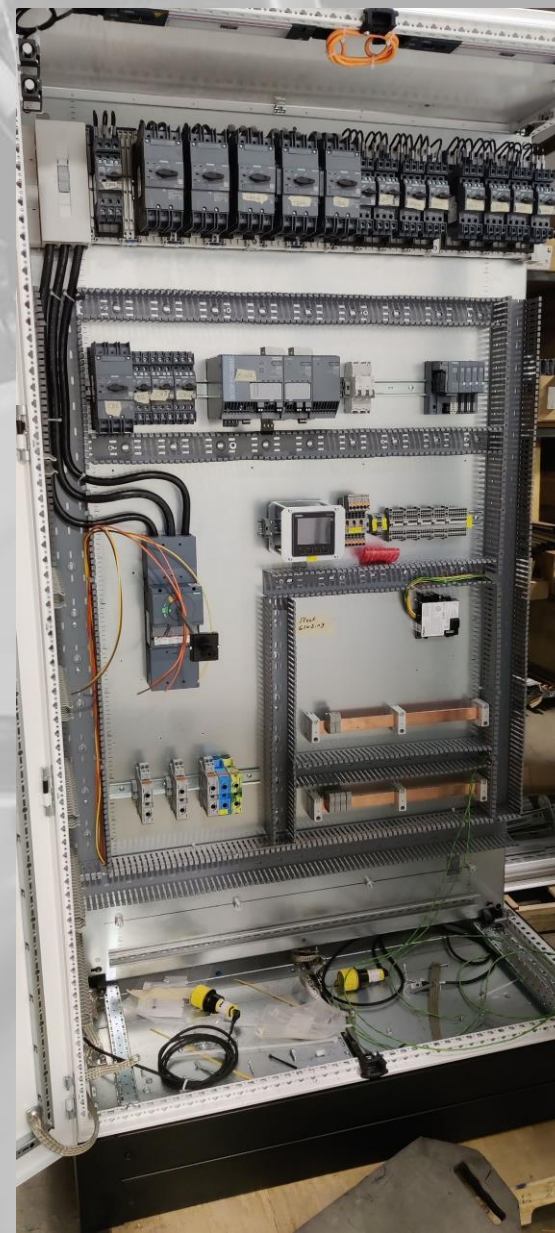
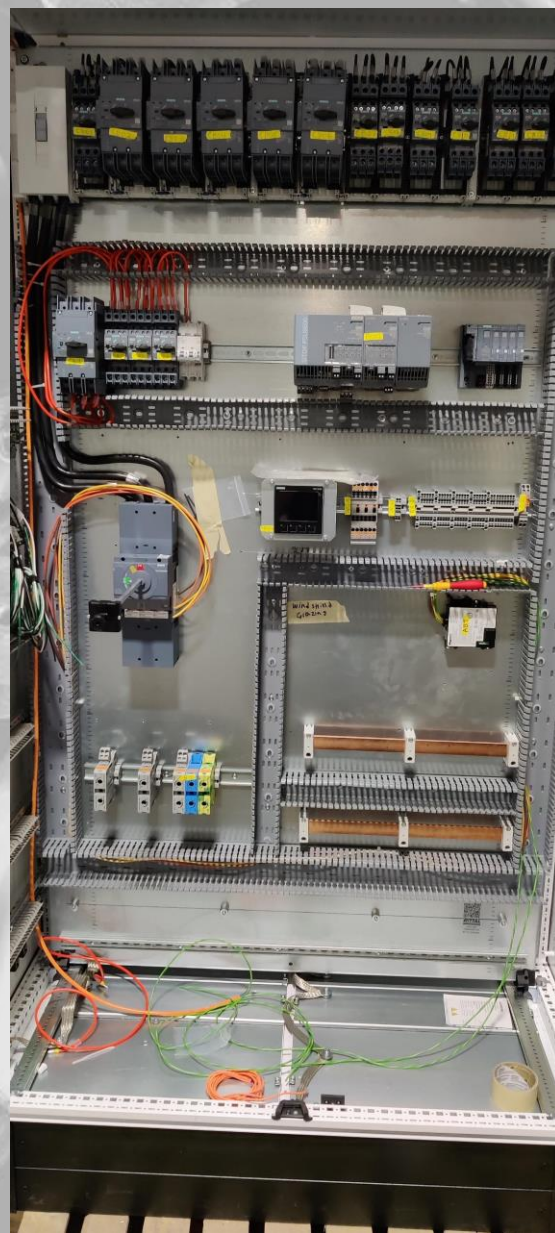
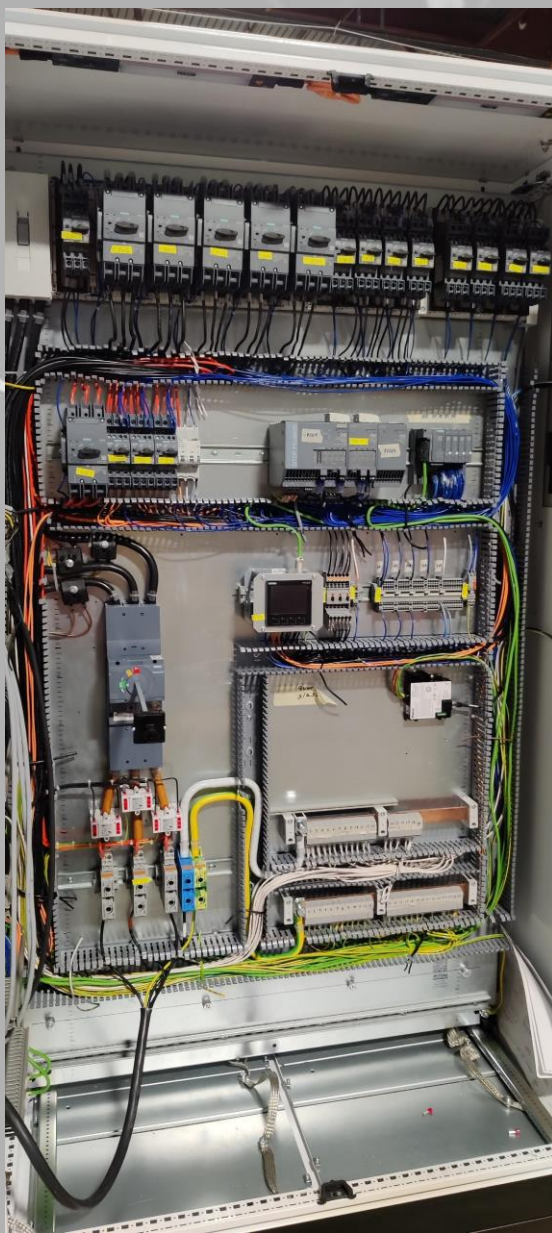




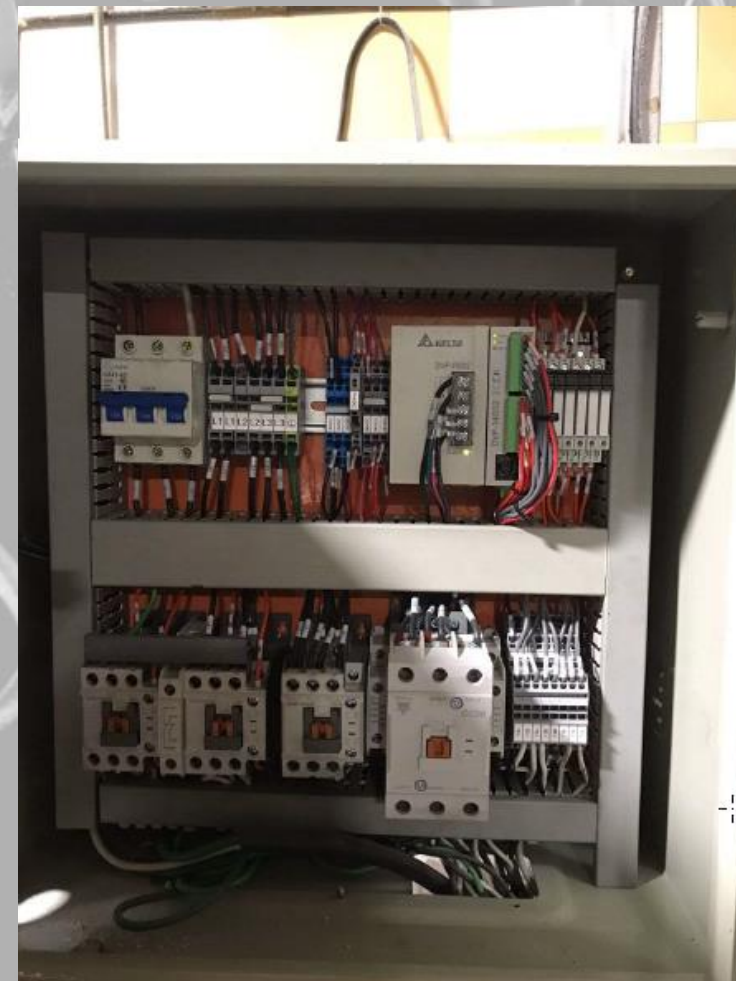
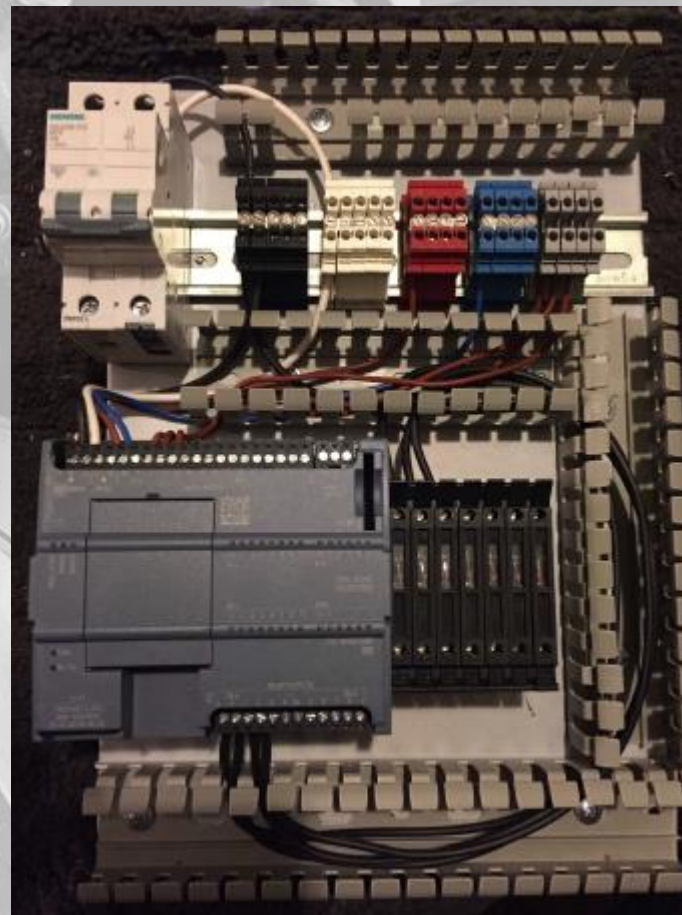
















# OUR GLOBAL PRESENCE





# OUR CUSTOMERS & PARTNERS

**ATN** Leidenschaft für Technik

**METECH**

**ATN** Passion for Technology



Mercedes-Benz

**DAIMLER**

**BMW  
GROUP**

**GM&T Engineering, Inc**



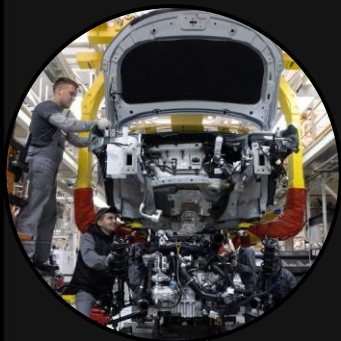
# **INDUSTRIES WE WORK FOR**



**ELECTRONICS**



**AEROSPACE**



**AUTOMOTIVE**





MOUTON PERFORMANCE - M

**THANK YOU FOR  
DOING BUSINESS!**

CONTACT

INFO@MES-NGI.COM

+52 (1) 614 490 -7802