



SANKO MEXICO
ENGINEERING PLASTICS

¡Bienvenidos! · Welcome! · ようこそ!

Group Information

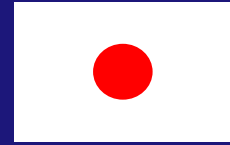


Sanko Kasei Co.,Ltd.

Is a Japanese company that operates in the *plastic and rubber product manufacturing industry.*



The company was founded in 1965 and is based in *Itabashi-Ku, Tokyo, Japan.*



Sanko Kasei Co.,Ltd.

Has established currently 12 manufacturing plants, with 3 overseas plants located in *China and Mexico.*



General Information



Establishment
March, 16, 2000



Capital
\$5,700,000 US



Building
5,713 m2



Operation Start
February 2001



IMMEX
No. 2000-537



IATF
Certified



PROSEC

Manpower

254
employees

6
days

3
shift days

8
hours

As of Jan-2025



Manufacturing Plant

Servo Controlled Robots, Grinders, Drayers, Conveyors

75
machines

Injection Machine Line up

50 Ton	9 Machines
75 Ton	6 Machines
100 Ton	28 Machines
130 Ton	3 Machines
180 Ton	10 Machines
220 Ton	8 Machines
350 Ton	10 Machines
500 Ton	1 Machine





**Closed Loop Water Cooling System
with RO. (Reverse Osmosis) Keeps 25°C**

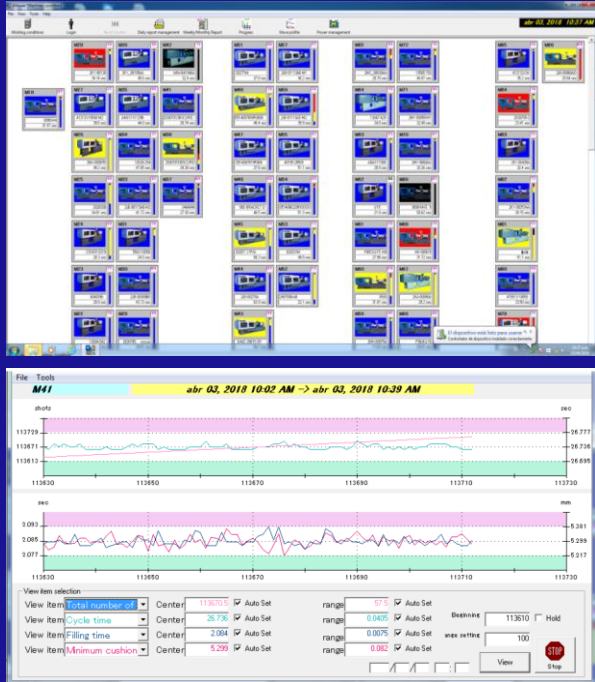
Air Conditioned Facility

Keeps 28° to 30°C



Real Time Monitoring System Software

(All injection machines connected.)



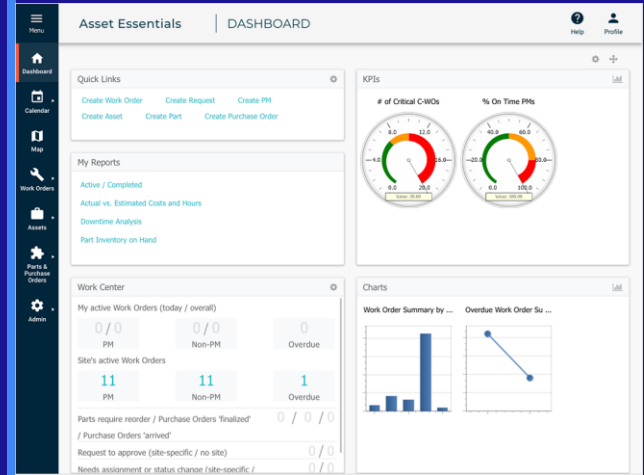
SPC Software

Statistical Process Control
(Almost measurement equipment connected.)



TPM Software

Total Preventive Maintenance
(All machines, equipment and tools)



Traceability/Scan System



Order Release

Raw Materials

Set Up

Production

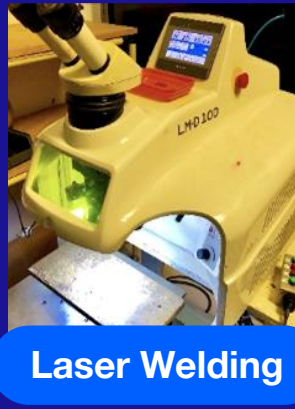
QC

Warehouse

Shipping



Tool Room



Engineering Changes

CAD



CAM



CAE



Professional tool Maintenance



Quality & Engineering

Visual Equipment & Design Software



**CMM
(2 unit)**



Quick vision probe



**Laser 3D Scan probe
Convert to 3D CAD data**



**3D Optical Profilometer
Convert to 3D CAD data**

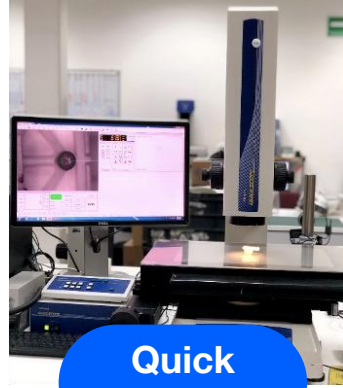


**Dual Optical, video measuring
system Convert to 2D CAD data**

Laboratory



Micro VU



Quick Scope



Image Dimension Measurement



CMM



Gloss Meter



Color Comparison



Contracer



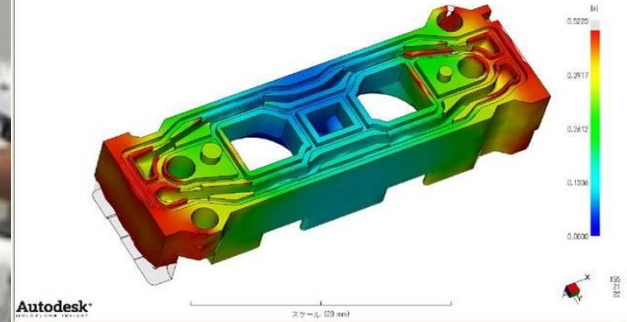
Dynamo Meter

Equipment and Software for analysis

Equipment



Software



**MFI
Resin melt
Flow analyzer**

**Humidity
Analyzer**

**Mold Flow
Analyzer**

Types of Resins

Resin Type	Usage
------------	-------

ABS,ABS+PC	30%
-------------------	------------

PP	23%
----	-----

POM	20%
------------	------------

PC	20%
----	-----

PBT	13%
------------	------------

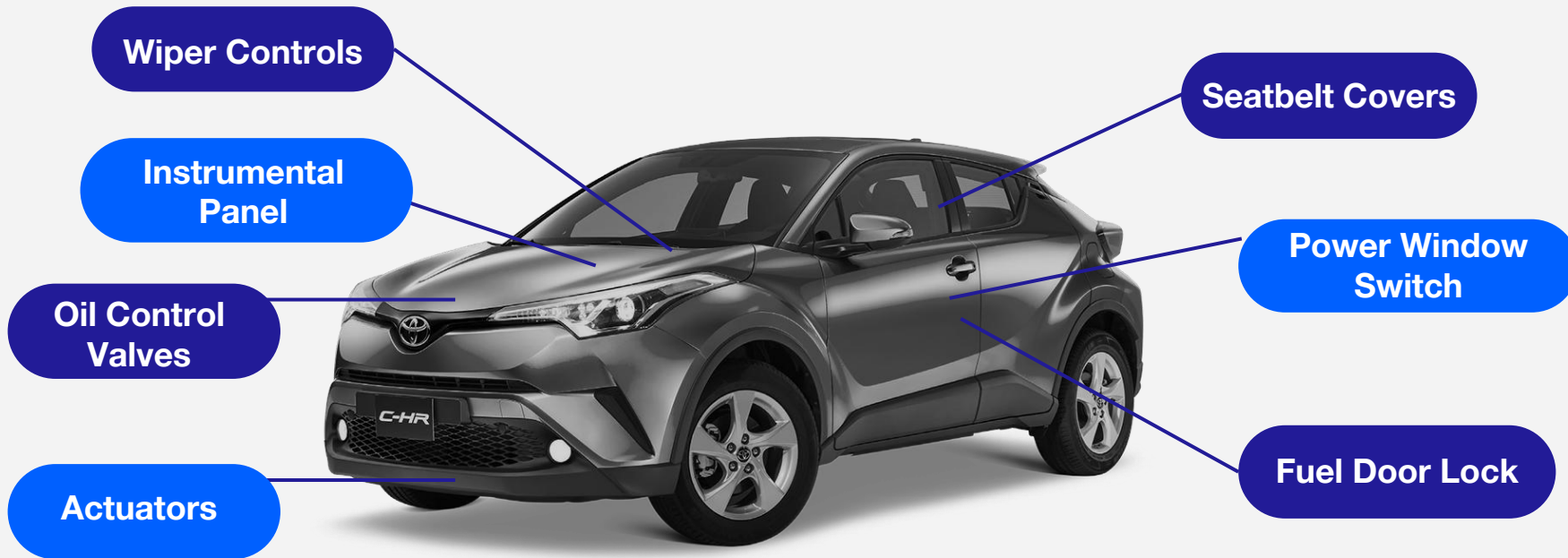
***FILLED AND UNFILLED MATERIALS
Supplied by distributors and makers**

OTHER TYPES OF RESINS:

TPV, TPE, PMMA



Automotive Product Portfolio



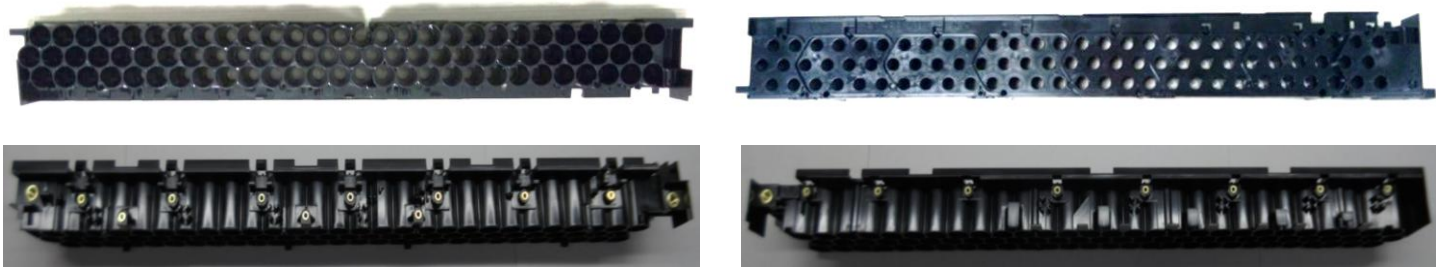
Cosmetic, Functional & Safety Products.





Electronic Product

Battery Holders



Batteries For Servers

OEM'S

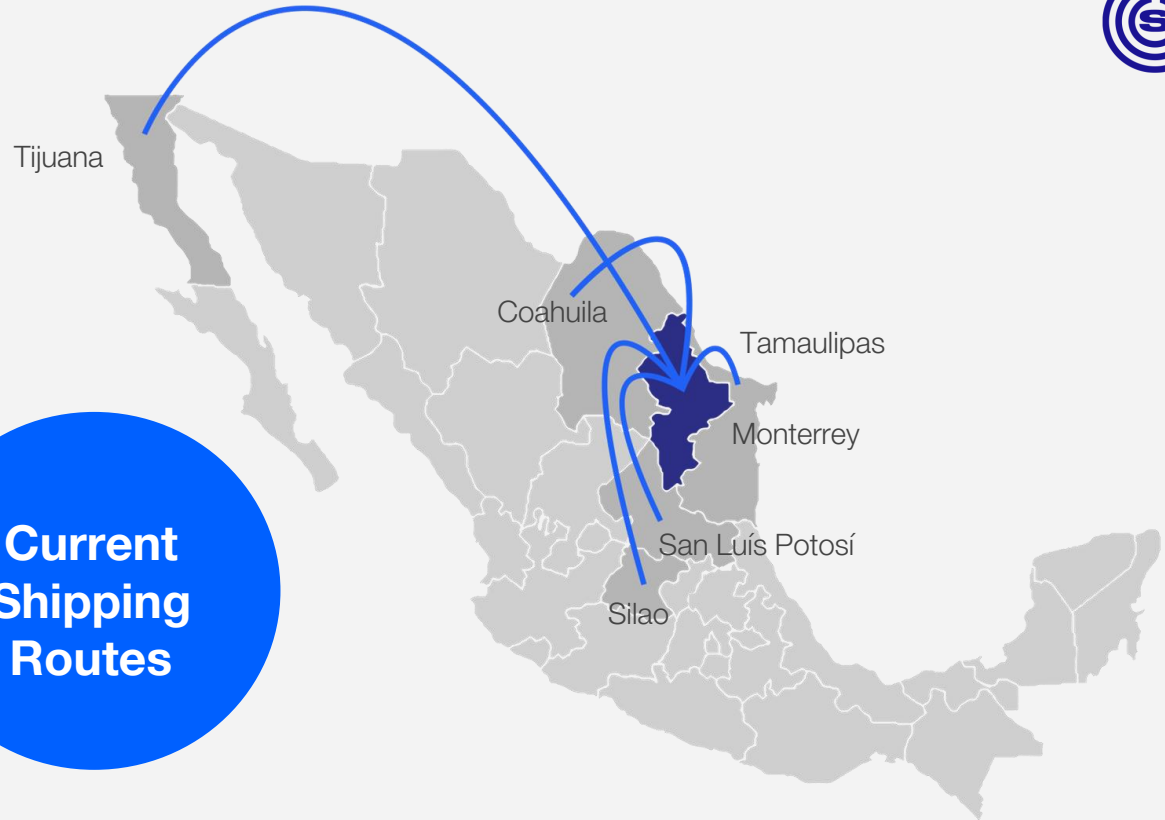




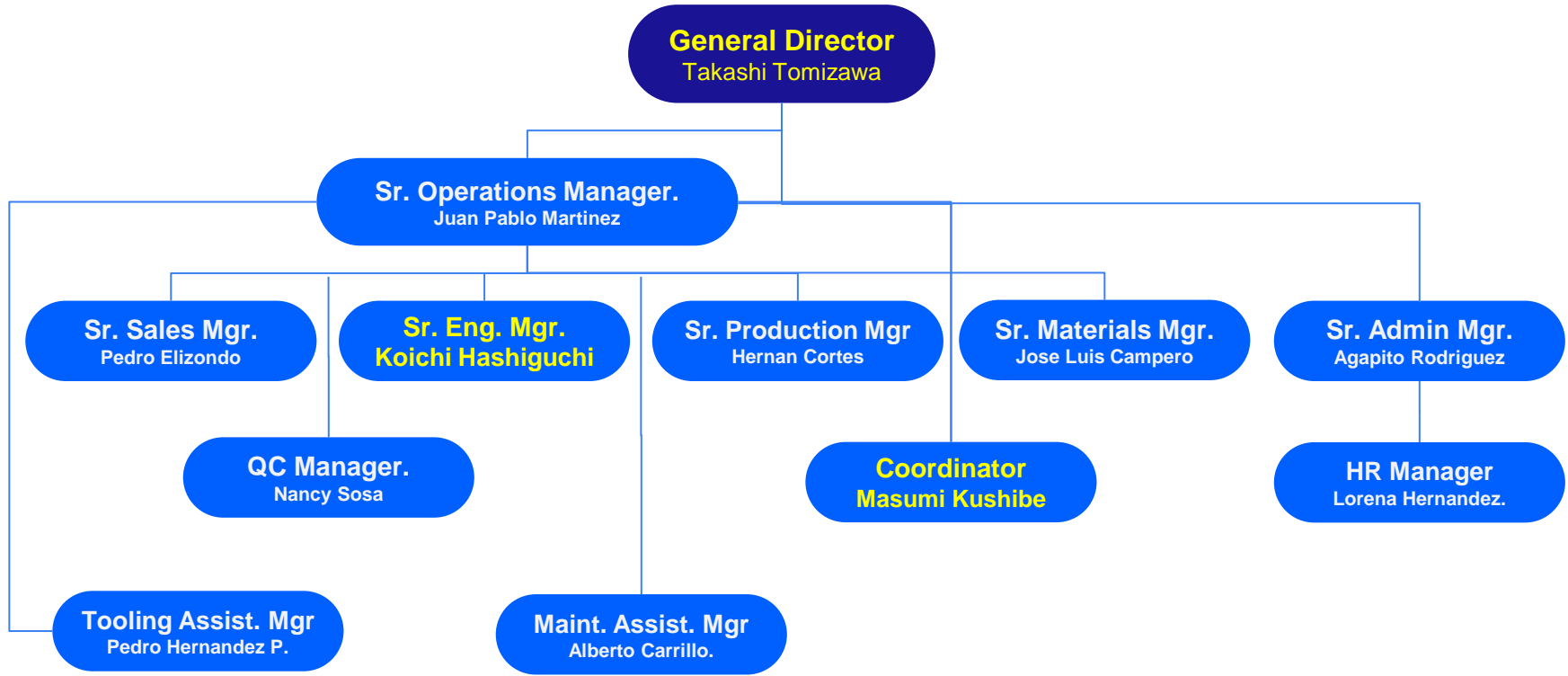
Tier 1

Manufacturing Location

Current Shipping Routes



Organization Chart



Global Footprint



11 Production sites

3 Overseas production site sales and technical offices





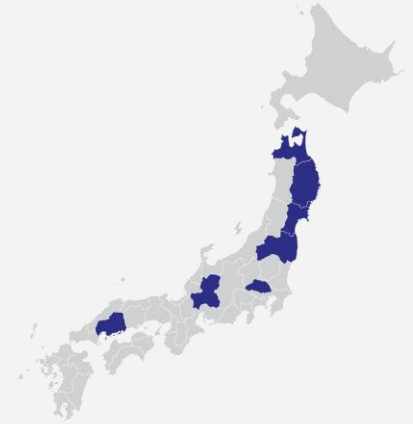
Mexico

Apodaca, N.L.
1 Production Plant



China

Dalian / Suzhou
2 Production Plant



Japan

10 Operation Plant
1 Tool Room
1 Head Office

SANKO MEXICO



¡Gracias! · Thank You! · ありがとうございます

Contact us: Mexico Cel. 818-253-3476

Office: (81) 8196-0176 E-mail: p.elizondo@sanko-mexico.com