

Moving the logistics industry
further

ARC – Accel Partnership



Who are we?

Our strong Asia and Transpacific Air, Ocean, Ground Transportation, Customs Brokerage and Warehousing experience helps us bridge cultural gaps and identify local and global solutions. We have both Asian and Western roots.

Our business is supported by experienced leadership team with an average industry experience over 25 years.

We provide a wide range of flexible and integrated transportation and logistics services to our clientele.



Milestones

Our Group history

▶ 2013



Established Logimark in Hong Kong as a local freight forwarder



▶ 2020

Quarter 2



New management team rebranding as Logimark

Quarter 3



Enter Hong Kong and China market



Enter USA Market as ARC Global Logistics



▶ 2021

Quarter 2

USD 10 million in revenue



Enter Taiwan and South Korea market

Quarter 3

USD 50 million in revenue

Reach 10 stations & 50 staffs



Enter Thailand and Vietnam market

Quarter 4

USD 100 million in revenue

Reach 100 staffs

▶ 2022

Quarter 1



Enter Malaysia market

Quarter 2

USD 200 million in revenue

Quarter 3



Enter Singapore and Indonesia market

Reach 20 stations & 200 staffs

Quarter 4

Established presence in El Paso through alliance with Accel Logistics



Further forward

Since inception we establish ourselves as a new market reference, thanks to rapid and consistent growth (Group figures).

Countries

9

Stations

20

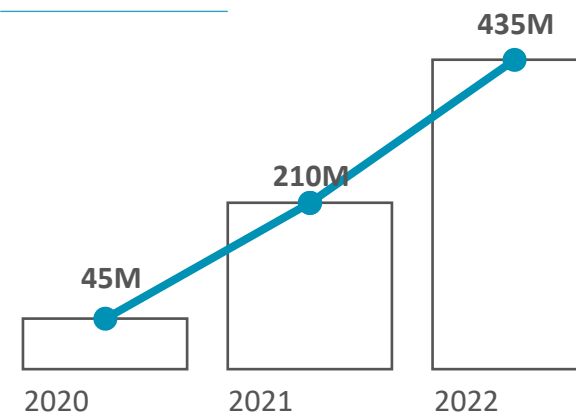
Team mates

200+

Average Monthly Shipments

1,500

Group Revenue (in US\$)



05 Stations

We are continuously expanding our coverage to provide specific knowledge and expertise to all our partners.



ARC Stations in The Americas



In the Americas we offer
our **presence** in the US
and Mexico



- Current Station
- 2023 Q1
- 2023 Q4

EMENA Coverage – Large agent network

Through Europe, Middle East and North Africa agent network, ARC/Accel serve their clients and the global market



Latin America Coverage – Large agent network



Regional:

- Full coverage in Latin America and the Caribbean
- Solid Agent Network

Through a Latin America agent network, ARC/Accel serve their clients and the global market

Accel Presence in Mexico and US/MX border

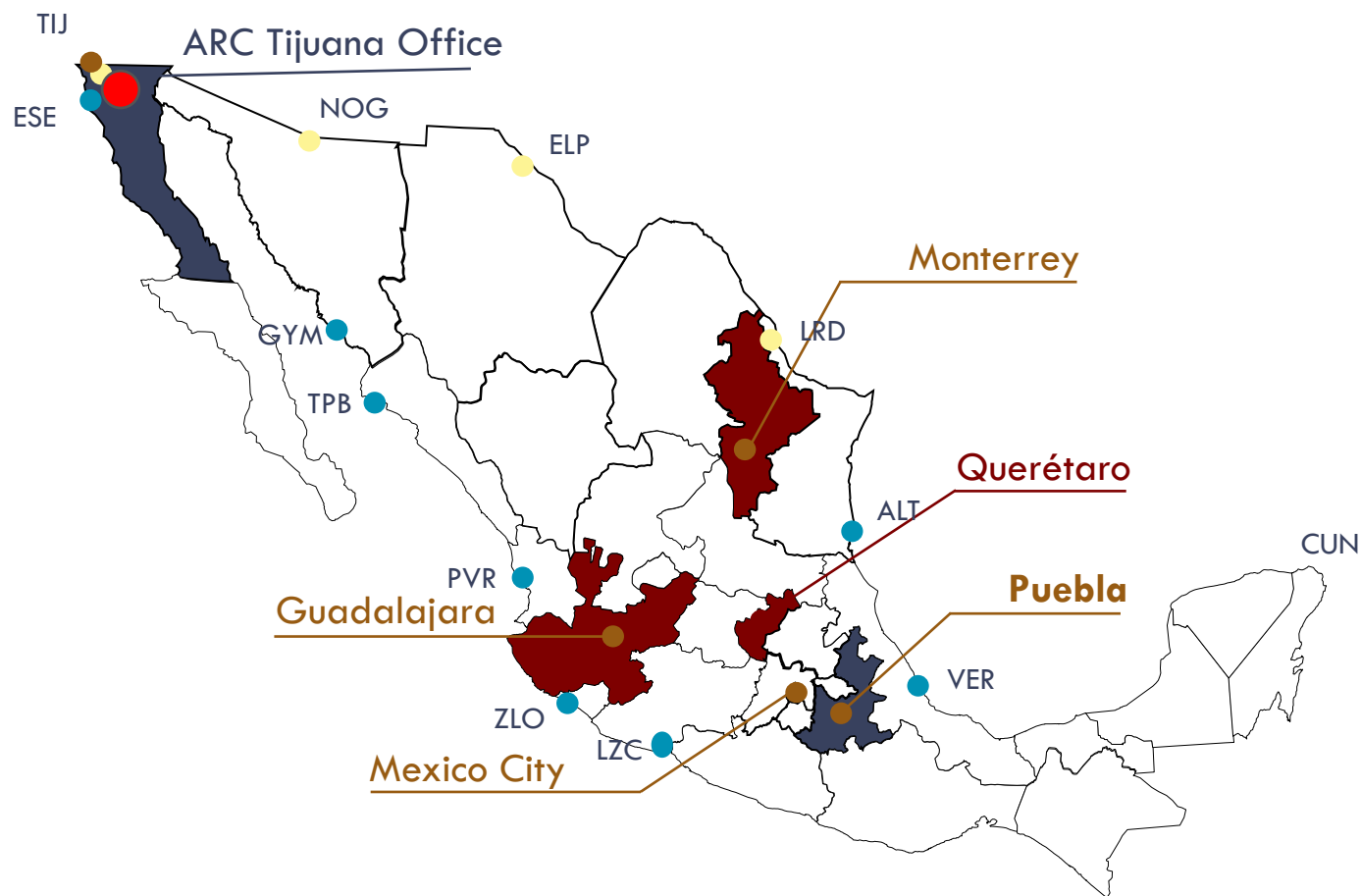
ACCEL is a company that specializes in the design and operation of integrated logistics solutions for our customers adding more value to their supply chain models.

ACCEL has more than 90 years of experience in the Logistics field and has helped a lot of customers to grow and expand their markets in Mexico as well as in the US/MX border



- Distribution center
- Representative Office
- Rail Spur
- Refrigerated Storage
- ACCEL Bonded warehouse
- ACCEL Worldwide Logistics
- ACCEL Worldwide Partner



**Current ARC Office****Main Airports**

(TIJ Tijuana, MEX Mexico City, GDL Guadalajara, MTY Monterrey, PBC Puebla)

**Main Ocean Ports**

(ESE Ensenada, GYM Guaymas, TPB Topolobampo, ZLO Manzanillo, LZC Lazaro Cardenas, VER Veracruz, ALT Altamira, CUN Cancun)

**Main Border Ports**

(TIJ, NOG, LRD, ELP)

**NEXT Offices**

Services

Full-spectrum logistics services

Led by professional experts and supported by enhanced technology systems, our range of logistics solutions overcome the many challenges your industry faces.



Air freight

Accelerate your supply chain with specialist air services.



Sea freight

Moving your cargo across oceans safely and smoothly.



Rail freight

Get your freight on track fast and cost-effectively.



Contract logistics

Avoid fixed warehousing and 3PL costs with flexible outsourcing.



Project logistics

Managing off-sized and breakbulk cargo globally.



Hand carry

Personal delivery of urgent and time-sensitive cargo.



Multimodal transport

Optimize your supply chain with a combination of air, ground and sea freight.



eCommerce logistics

Hassle-free ecommerce delivery from factory to doorstep.



Customs brokerage

Brokerage, compliance and legal consulting with a global perspective.

Global **leading tools** with aim to be a Digital Freight Forwarder

Logimark's technology provides A-to-Z solutions for your supply chain. Our technology systems are continuously optimized with our clients' most urgent needs in mind. Real-time information, helpful tools and a range of communication options to get digital freight forwarding services



First Class ERP

Using the renowned CargoWise system, world leader in freight and logistics IT systems, providing wide range of built-in and developed solutions.



Digital Freight Forwarding

Our experienced, cross-culture IT developers offer all sorts of solutions for your business, from EDI to track-and-trace and PO Management. Our team operates from two different continents, in order to ease your communication wherever you are.



Qualified Operators

All our operators are CargoWise certified in order to guarantee high service level at all times.



Verticals

Experts in **your industry**

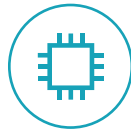
We understand that each industry has its own special requirements for logistics. Supported by on-the-ground insights and deep industry experience, our global experts offer comprehensive and tailored solutions to optimize the speed and cost of moving your freight.



Aerospace



Automotive



Electronics



Fashion & Lifestyle



Food &
beverage



Healthcare



Publishing



Energy &
Renewables

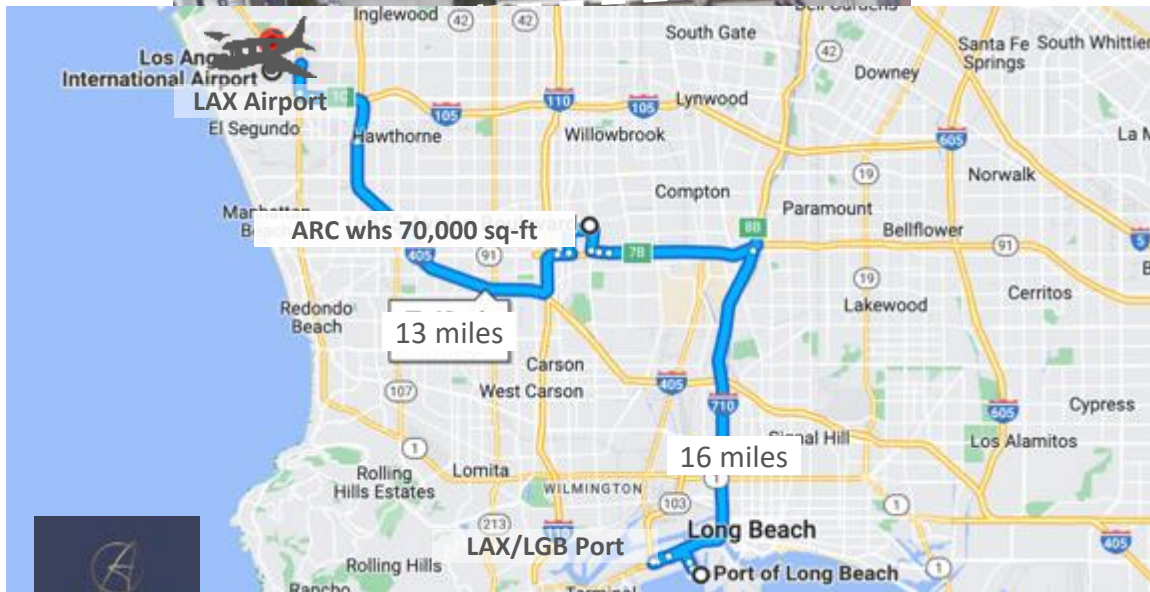


Gardena, CA – Contract Logistics Capabilities



Warehouse: Gardena, CA

- 70,000 sq. ft. warehouse
 - 32' clearance
 - 5,000 sq. ft. office space
- 13 dock doors, 1 ramp
- 4000 pallet positions in rack for palletized freight
- Bulk area for palletized freight and transshipments
- Cross-dock operations
- Full WMS – Wi-Fi enabled for scanning
- Container trucking application available for EDI
- Security/cameras with access control
- 13 miles from LAX Airport and 16 Miles from the port of Long Beach



Gardena, CA – Transshipment and Storage capabilities



Warehouse Associates

- 2 overlapped shifts
 - 6am – 3pm
 - 2pm – 10pm



Office Associates

- 2 overlapped shifts
 - 7am – 5pm
 - 10am – 7pm



Daily: 30x40'/40HC in - 30x53' out

Storage Capacity

70,000 sqft – Rackable
– 32' clearance



Loads: 70% palletized - 30% floor loaded
(160 to 4000 cartons)
Floor to floor trans-shipment available

- Total 70,000 sqft. 13 dock doors
- 4000 pallet positions in rack available
- Transshipment and storage capabilities
- Class A warehouse building



El Paso TX, Warehouse and Distribution Center



Warehouse Size: 24,000 sq. ft.

Number of Dock Doors: 5 docks (9' x 10')
& 1 ramp.

Max Weight floor cap: 22,000 Lb / Ft2

Forklift Capacity: 5,000 Lbs

Secure Access: Yes

Racking available: Yes

CCTV Security: Yes

Operating Hours: M-F 7 am – 5 pm

Services:

- Material Drop Point Facility.
- Warehousing & Distribution
- USA Domestic & International Routing.
- Material Handling.
- Project Management.
- Order Management to SKU Level.
- USA Brokerage.
- Completely Integrated Logistics & Transportation Solutions.
- Cost-Effective Rates & Routing.
- Sorting Services



FTZ at El Paso/Juarez border (Recinto Fiscalizado)

Services:

- Material Handling
- Cross docking
 - Material Classification.
 - Material Inspection.
 - Material Verification.
 - Material Drop point facility.
- Transloading.
- Material Consolidation.
- Storage & Distribution.
- USA / Mexican Customs Brokerage.
- Completely Integrated Logistics & Transportation Solutions.

- **Number of Dock Doors:** 30 docks & 4ramp.
- **Secure Access:** Yes
- **Truck Yard:** Yes.
- **CCTV Security:** Yes



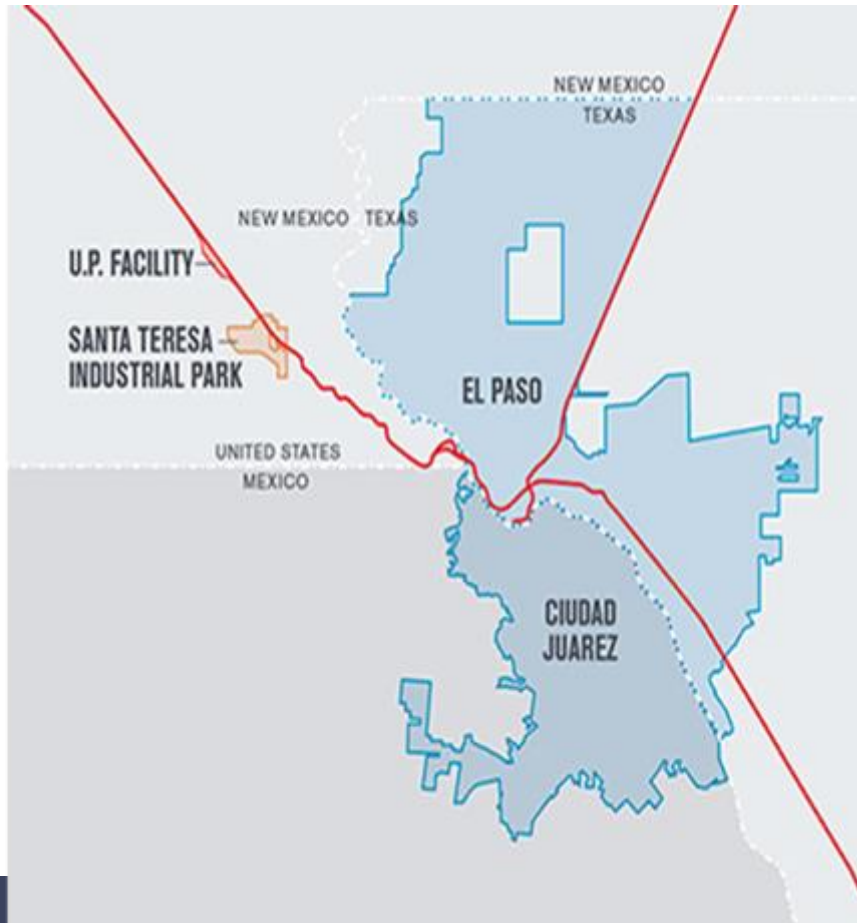
Duty free area in Cd. Juarez, Chih. Capabilities:

- Cross Docking and Distribution
- Feed manufacturing lines at Juarez (semiconductor, automotive, etc.)
- **FTZ** – Allows duty postponement, handling, Warehousing & Distribution, for 60 days.

ACCEL[®]
Logística



Accel San Jeronimo MX (Santa Teresa, NM border)



- Great Geographic Location within the limits of New Mexico, Texas and Chihuahua Mexico.
- Easy Access to US Highway I-25 and I-10 and Santa Teresa Airport (6 miles)
- Built to Suit Warehouse located 1 mile away from Santa Teresa Border Crossing.
- Warehouse located 4 miles away from Union Pacific Railroad Station in Santa Teresa.
- Transportation Cost Savings on Container Drayage and NO Demurrage charges.
- Shorter waiting times at the Border Crossing which means faster access to raw material and finished goods.



Ciudad Juarez, MX: Warehouse & Distribution Center

Warehouse Size: 400,000 sq. ft.

Number of Dock Doors: 36 docks & 2 ramp

Secure Access: Yes

Racking available: Yes

CCTV Security: Yes



Services:

- Warehousing / Distribution.
- Material Handling.
- Project Management.
- 3PL / VMI Management.
- Order Management to SKU Level.
- Mexican Customs Brokerage.
- Completely Integrated Logistics & Transportation Solutions.
- Cost-Effective Rates & Routing.
- Access to Real-Time Shipment Data Anywhere, Anytime
- Accurate & Error-Free Billing and Documentation.



ACCEL[®]
Logística



Pick and Pack, e-commerce experience

Clients we provided pick and pack service



amazonservices



Big lots sells appliances, furniture and other retail products. ARC delivers to Big lots fulfillment centers

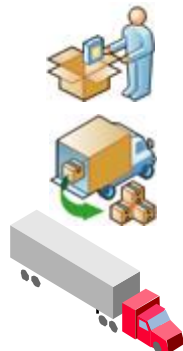


Multi brand apparel products. We distribute through FedEx and ARC provides deliveries to Costco's fulfillment centers



Apparel containers from Port through ARC. 2000 cartons per month. Daily case pick B2B. Bulk orders go to Walmart fulfillment centers

Delivery services to FBA



Parcel services through FedEx account

LTL (less than truck load) through ARC partner service

TL (full truck load) through ARC partner service

Deliveries to

- Direct to consumer
- Amazon FBA
- Costco
- Best Buy
- Wayfair
- Walmart

Compliance with SSCC labeling, QR codes

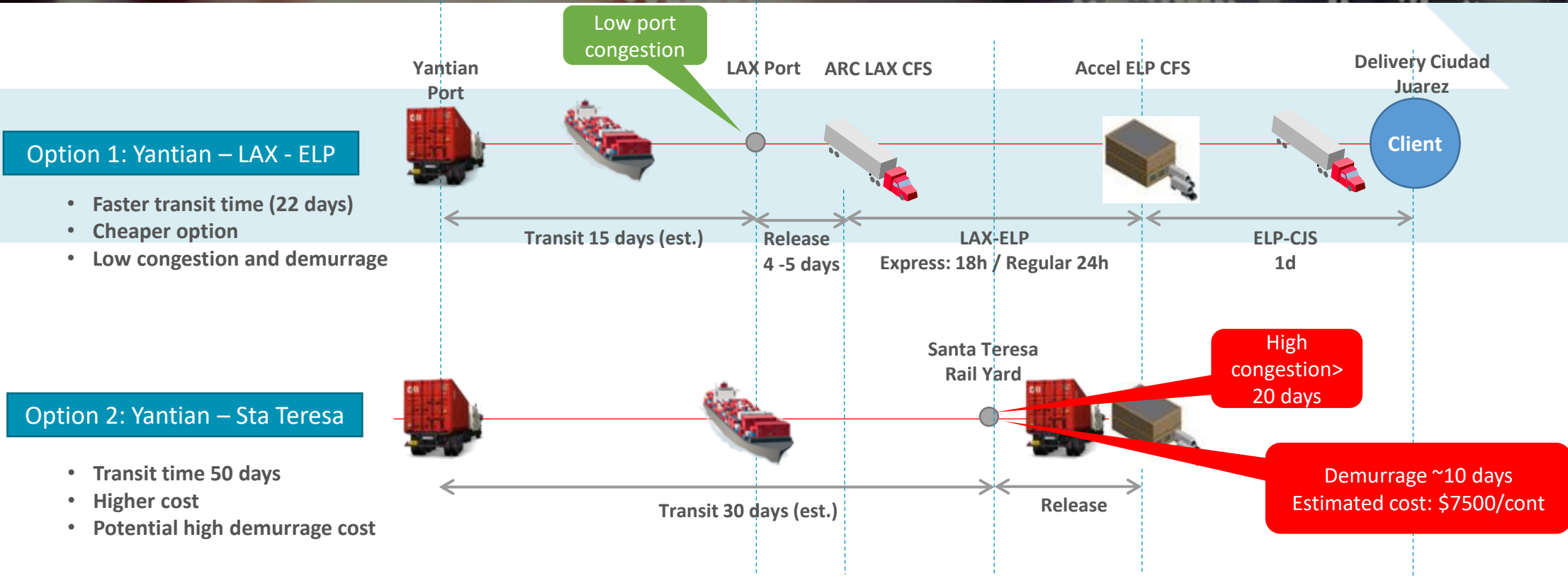
Re-packing and re-processing capabilities

Our resources in LGB/LA and NY/NJ Ports

Access to local and regional tractor, chassis, trailers and transshipment warehouse is estimated as below. However quantities can be increased based on demand. Consider each project of 15x40HC daily, depending on distance to port/whs would require from 30 to 45 dedicated trucks



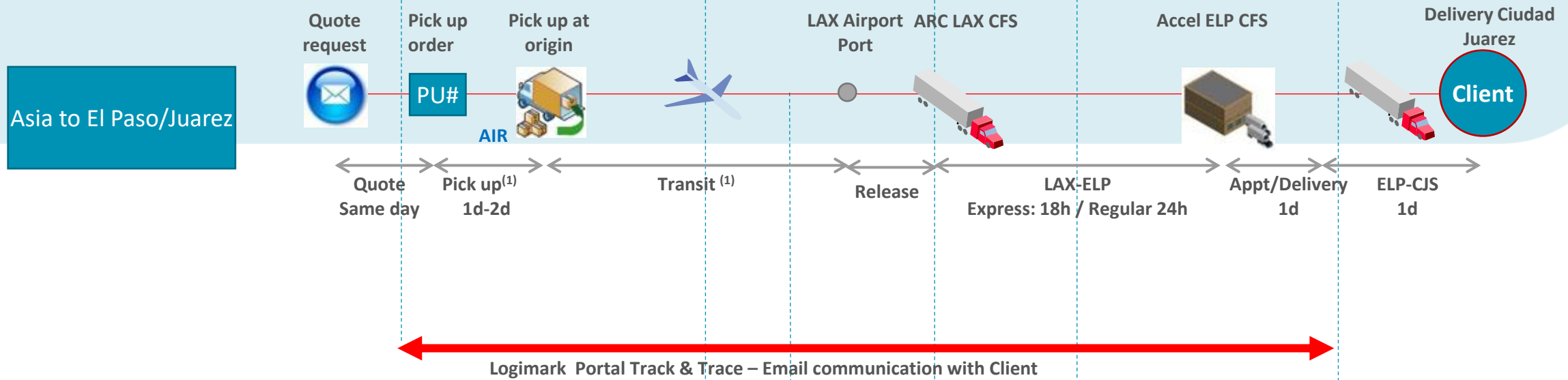
Case Study: Ocean Freight from Asia to El Paso/Juarez



Recommended Option: The option via LAX with transshipment offers better control of the loads and similar price. Cargo to remain 2 days max at LAX warehouse for transshipment and delivery to El Paso via 53' truck

(1) Cost does not include port congestion charges, pre pull, chassis, pier pass or any other accessorail different from drayage, linehaul and FSC (included)
(2) Transshipment cost does not include any additional material (lashing, air bags, etc.) neither any additional labor on lashing or cargo securing.

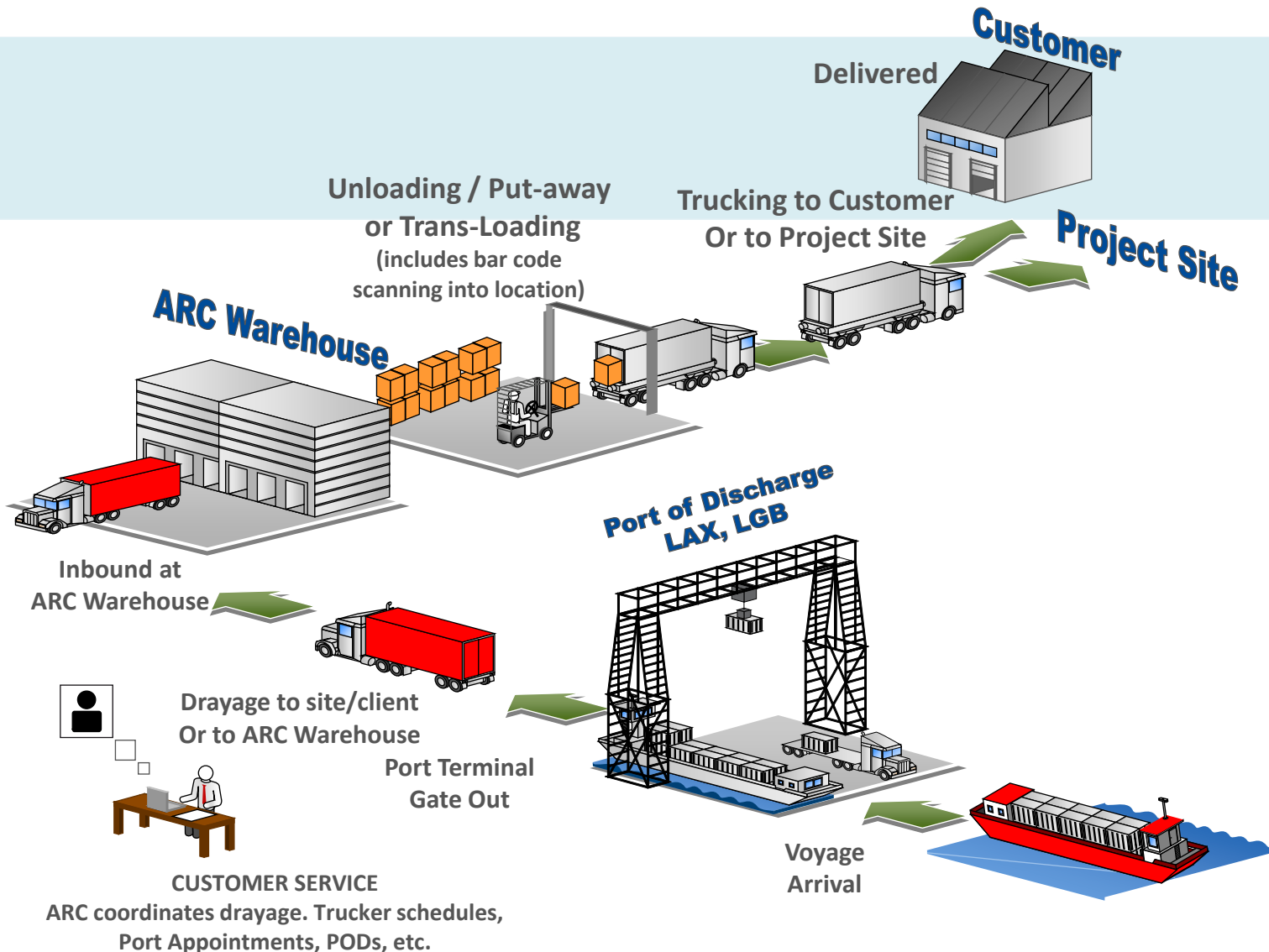
Case Study: Air Freight from Asia to El Paso/Juarez



Expedited cargo from origin through LAX airport into El Paso. Client can pick up from El Paso CFS and also store its product in El Paso warehouse.

- (1) Pick up time depends on material availability from supplier
- (2) Air/Sea transit depend upon origin port/airport distance to LAX
- (3) All days stated in this chart are working days

Case Study: Transshipment at LAX (Ocean & Air)



Services can include:

- Drayage from Port to Whs
- Direct drayage to site/distributor
- Trans-loading at whs by Port (from 40HC into 53' truck)
- Delivery from Whs to site/distributor
- Full and prompt POD
- Others: Product re-packaging, palletization, insurance, international re-shipping, etc.

Case Study: Ocean routing to El Paso and US/MX border region



Considerations

- Container routes to LGB/LA, Houston are regular container routes to get to El Paso
- However, ARC / Accel also offers route to Manzanillo, MX with truck through Mexico up to border crossing point in El Paso or Juarez

Main Final destinations in US

- El Paso area (Available CFS and whs from ARC/Accel)
- Juarez: 60x40HC bonded available.
- Laredo, Mexicali and Nogales areas

Conclusions

- Depending on timing at IPI inland ports in US, urgency and value of the cargo, ARC/Accel offer the right routing solution with best combination of Transit time and cost

Notes:

- All routing, transit times is based on actual experience with exiting clients of ARC / Accel

Case Study: Air freight routing to Mexico through LAX airport



Considerations

- ARC/Accel offers all air freight routes into MX City, Guadalajara and Monterrey, through LAX Airport (fastest air route from Asia) and DFW
- Also, truck service can be offered from LAX to MTY, GDL and MEX hubs via own LTL consol

Main Final destinations in US

- Guadalajara and Bajio areas (automotive and semiconductor)
- Monterrey area and Mexico City areas
- El Paso areas through consol via own 53' truck

Conclusions

- Innovative routing can reduce cost and expedite transportation with all air routes or combination of air/ground routes
- High value cargo experience and safety

Notes:

- All routing, transit times is based on actual experience with exiting clients of ARC / Accel

Transshipment cargo lashing and securing at LAX ARC whs

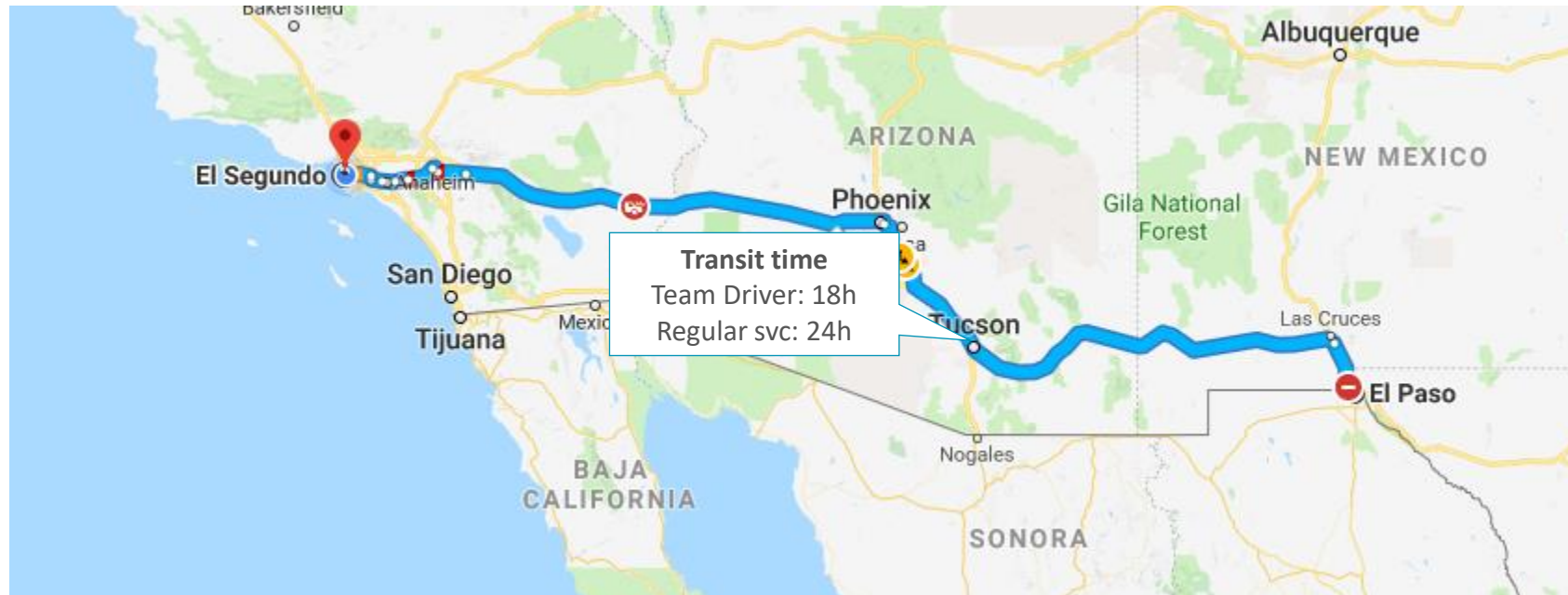


- ARC Global has experience in cargo lashing and securing
- Cargo restraint systems and additional material can be added to secure load
 - Air bags between pallets
 - Lashing
 - Strapping
 - Secure loose cargo to trailer structure
- Depending on type of load, weight and trailer or container type, the restraint system does not allow product to shake or get damaged during transportation.



Current ARC business from LAX to ELP

- Trucks from LAX to ELP are scheduled daily
- Rates vary depending on if transit time is express or regular service.
- Trucks can be exclusive or shared depending on client's request
- Transit time showed below is from ARC LAX CFS to ARC/Accel ELP CFS (it does not include cargo recovery from LAX airport and delivery at ELP or border crossing to Ciudad Juarez)



Contact us

Let's go
further forward
together!

ARC Global Logistics – Eduardo Vargas

 eduardo.vargas@arcglobal.us

 +1(562)476-1017

Follow us on [Linkedin](#)



Visit us at <https://www.arcglobal.us/>



Thank you

for trusting us

