

CONTACT US_

915-320-9320
purchasing@direp.co

VISIT US AT_

421 Frederick Rd.
El Paso, TX. 79905

VISIT OUR WEB_

direp.co



Get a **bid**

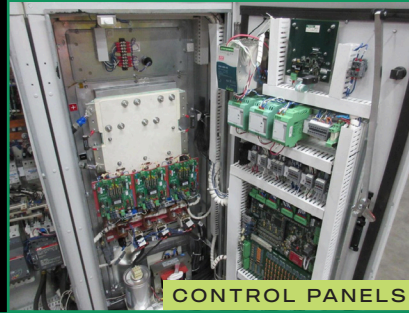




**Diversified
Industrial
Recovery**

WHAT DO WE BUY?

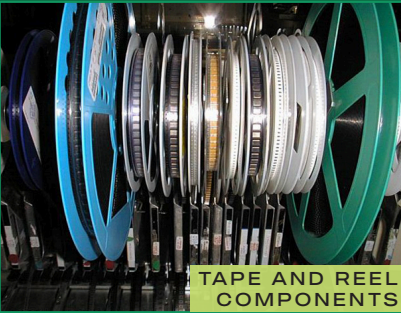
Diversified Industrial Recovery provides full asset recovery services, maximizing your return on surplus assets and supplies, from excess components and spare parts, to obsolete production lines.



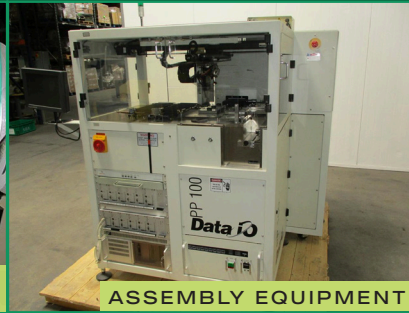
CONTROL PANELS



OBSOLETE COMPONENTS



TAPE AND REEL COMPONENTS



ASSEMBLY EQUIPMENT



INJECTION MOLDING EQUIPMENT



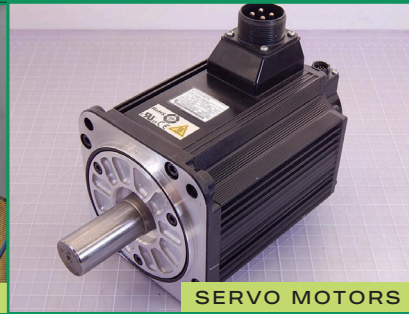
PLCS



LAB EQUIPMENT



ELECTRICAL EQUIPMENT



SERVO MOTORS



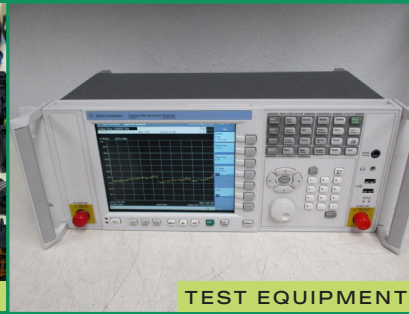
SERVO DRIVES



OPERATOR INTERFACES



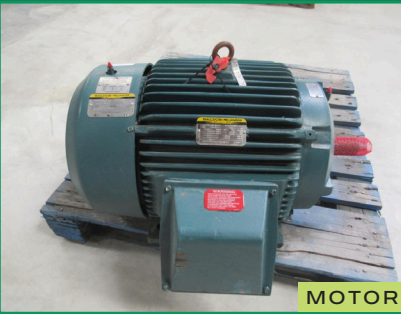
CONNECTORS



TEST EQUIPMENT



COMPRESSORS



MOTOR



PALLET RACKING AND INDUSTRIAL SHELVING



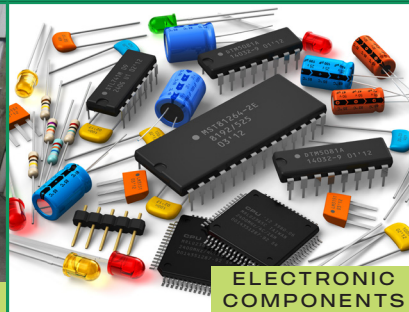
TERMINALS



FORKLIFTS



PUMPS



ELECTRONIC COMPONENTS



...and much more!



OUR SERVICES:



Full Service

We will contract to receive your surplus for a defined term, usually a year. Contract details are based on your needs and surplus stream. We will provide you with a convenient, fast, and secure service that allows you to focus on your core business.



Scrap Plus

We give you a baseline for your scrap equipment and add a bonus for any value adding components in the equipment. We do the work and pass on part of that additional recovery to you.



Consignment

We sell your inventory for you, with no up-front cost. We receive, inventory, process, and market your surplus; when it sells, we ship your order. We split the proceeds from the sale with you 50/50.



Surplus Bid

We make a direct bid for your surplus based on our analysis of resale potential. You get an immediate recovery from your assets and make space for other products or activities.



Certificate Of Destruction

We receive your equipment, render it inoperable, while documenting the procedure from start to finish and reporting to you how much recovery each asset returns, and certifying its destruction.