



Injection Molding & Assembly

San Luis Potosí, SLP México

Company profile – *meet or exceed our customers expectations!*

- *Founded in 2013*
 - InMolding is your strategic business partner based on the manufacture of plastics parts.
 - Grant services for new products, transfer tools and serial production according to your specifications.
- Our service strives for:
 - Fast response
 - Flexibility
 - Sense of urgency
 - Continuous Improvement
 - Relocations
 - Cero defects
 - Cost reduction

Business model

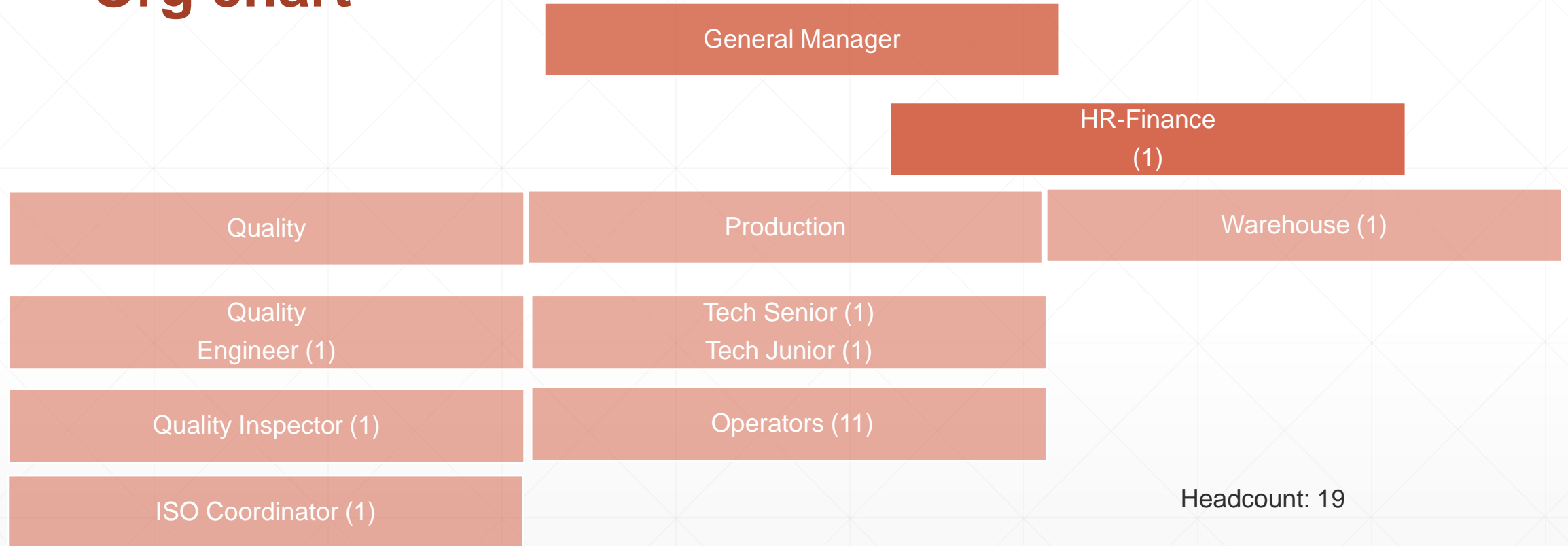
Mold Transfer

- **Contract Manufacturing**

Quote to Print

- **Mold Development**

Org chart



Headcount: 19

Facility

- 600 sqM



Machine capacity

Machine Tonnage	No. of Mach	Shot Weight (grams)	Space Tie Bars (mm)	Max Daylight (mm)	Max Mold Height(mm)	Min Mold Height(mm)
75	2	146	320x320	630	360	100
95	3	210	360x360	720	400	130
155	1	388	430x430	850	460	150

Resins

- PA - Polyamides (6/66)
- POM - Polyoxymethylene
- PC - Polycarbonates
- ABS - Acrylonitrile Butadiene Styrene
- TPO - Thermoplastic polyolefin
- PBT - Polyester
- PP – Polypropylene
- TPE, Santoprene
- PE - Polyethylene



Quality controls

- PPAP
- CAD
- Flow Diagram
- FMEA
- Control Plan
- Inspection Sheet
- Operator Instruction
- Process Audit
- Dock Audit
- 8D's report

- APQP Process

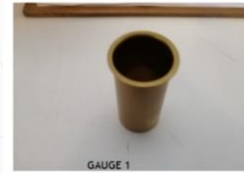


- GP-12 Launch Process

InMolding+ MUESTRAS MASTER
NÚM. DE PARTE 10526976



NÚM. DE PARTE 10523817

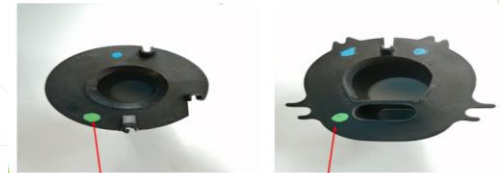


GAUGE 1



GAUGE 2

InMolding+ MARCAS TESTIGO DE GP-12



MARCA TESTIGO GP-12

MARCA TESTIGO GP-12



InMolding+ GAUGE PARA SPOOL (10523817)



InMolding+ GAUGE PARA SPOOL IMS (10526976)



KPI's 2022

Customer PPM's	0
Customer Quality Alerts	3
Delivery on Time	100%
OEE	76%
Safety (accidents)	0
Employee turn over	11%
FTQ	0.56%
Supplier PPM'S	0
Inventory days (avg/mo)	7

Products

Interior Seat



Component Fluids



Power Drive



Covers



Tether

Supply Chain

InMolding |
understanding on plastics



Location

Plant Directions:

Av. CFE No. 1015 Int. 6 y 8 Parque Industrial Integra

Esquina con Eje 140 C.P. 78395 Zona Industrial, San Luis Potosí

Cel. 444 1957974 Tel. 444 8356097

email: Lpalafox@inmolding.mx

Thank You !

