



**IMPERSEALCO**  
S.A. DE C.V.

---

- Mexican company certified on ISO 9001:2015 and ISO 14001:2015 with more than 30 years of experience in the automotive, bus and trains market, offering integral solutions to our clients combining our product development department and our manufacturing process.



# IMPERSEALCO LOCATIONS



Dallas, Texas  
Sales Rep.

Tula, Hidalgo  
10,000 sqm



Tultitlan, Mexico  
2,500 sqm ( 2 factories

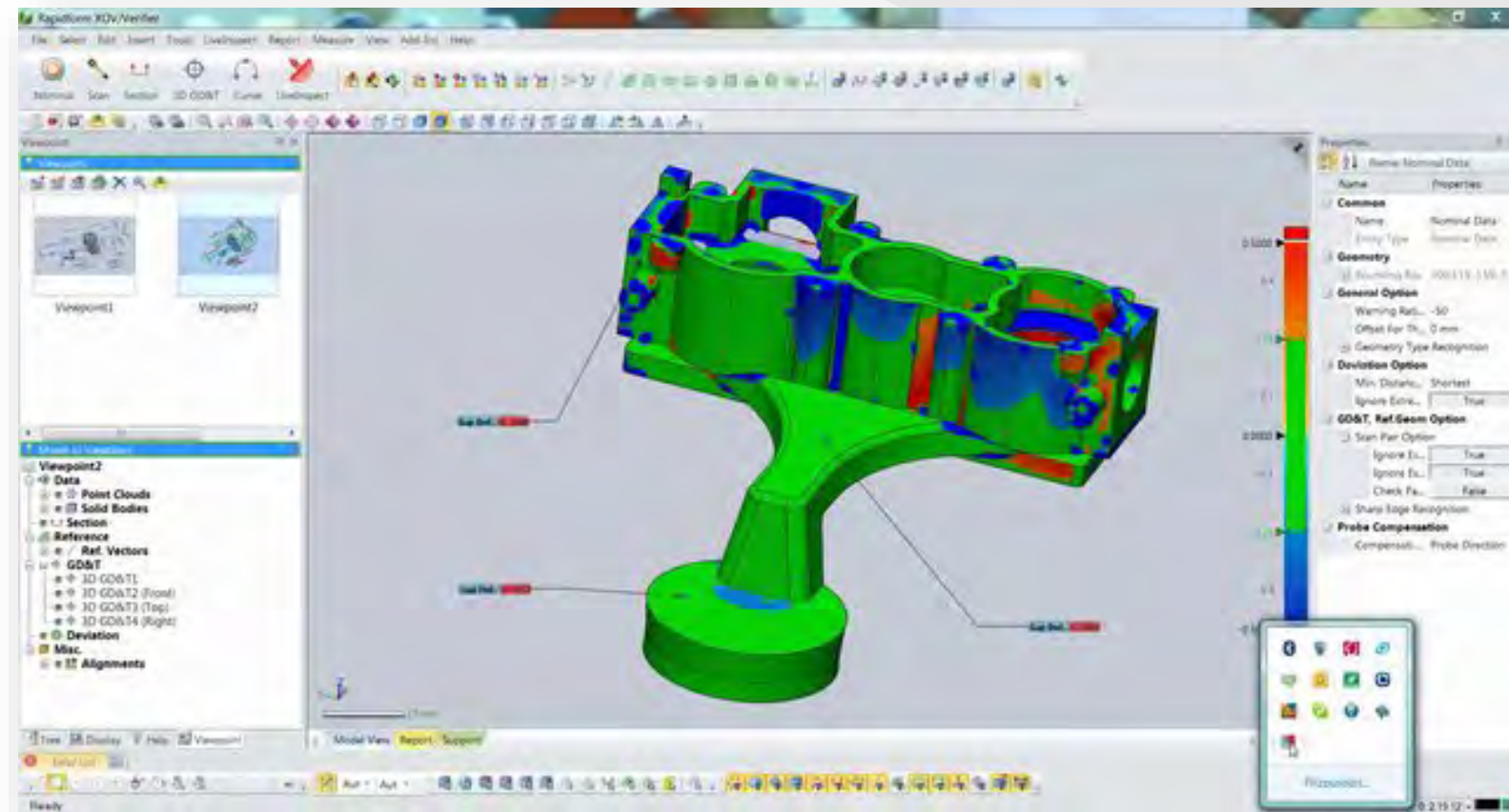
# MARKET

- Buses
- Trucks
- Trains
- Automovil
- motorcars
- Furniture



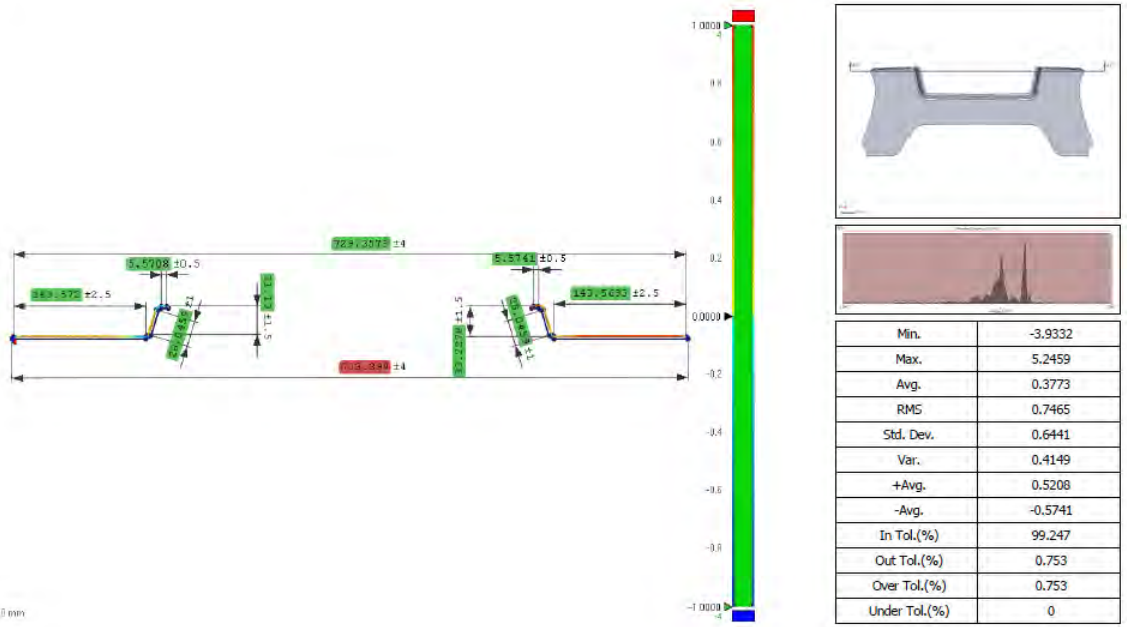


**CAD design, CAM programming and CAE simulations are performed with our qualified engineers using software to perform simulations and reverse engineer design.**

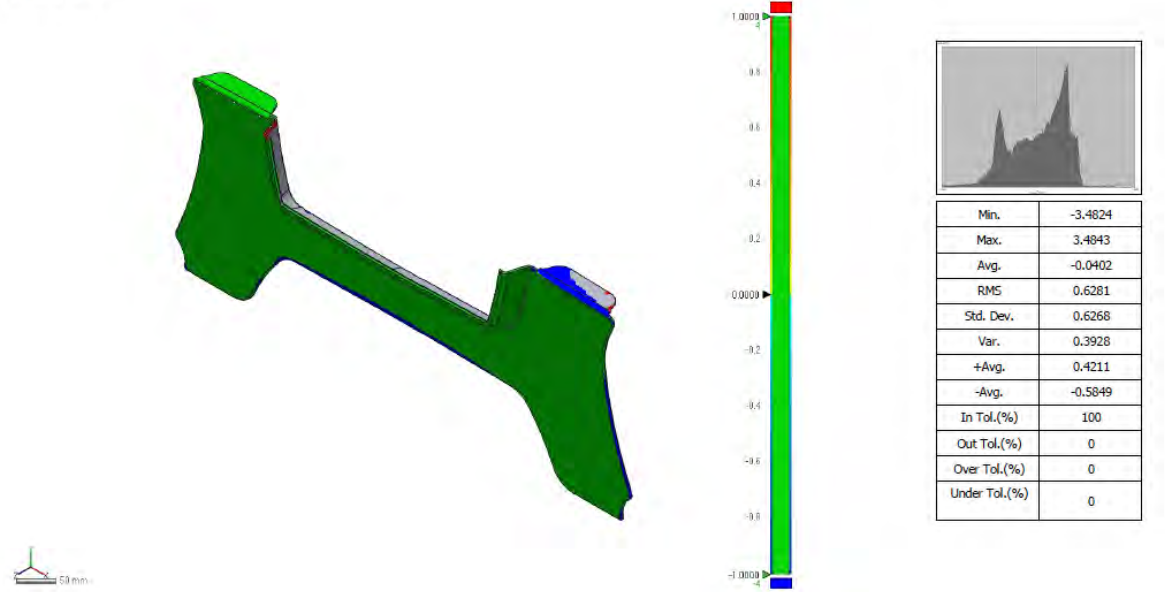


# 3D SCAN INSPECTION

SEC3



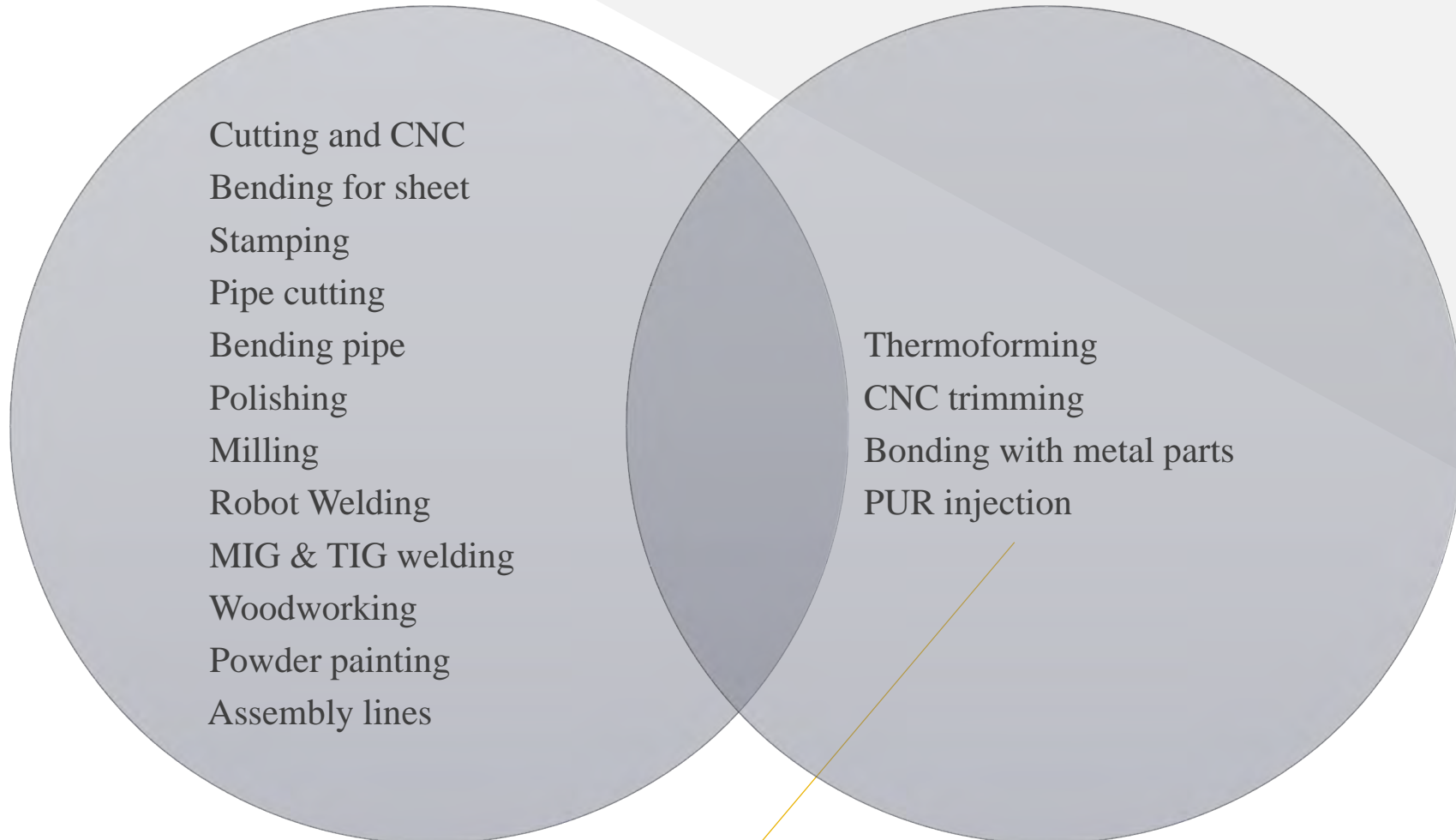
WHL-DEV1



# IMPERSEALCO PROCESSES

## Plastic Division

## Metalmechanic Division





# METAL MECANIC DIVISION

Impersealco facilities



# METAL SHEET CUTTING AND CNC BENDING

- New Machinery for cutting and Bending Metal Sheets
- Sheet length up to 3 meter





## TIG & MIG WELDING

- Welding Robot
- AWS Process certification
- AWS Certified welders



# MIG & TIG WELDING

- Made in house Fixtures
- AWS Process certification
- AWS Certified welders





# PIPE CUTTING AND CNC BENDING

- CNC bending
- Different pipes and calipers
- Custom desing



Cutting



CNC Bending



# Stamping

- 100 Tons Machine
- 40 Tons Machine



## POWDER PAINTING

- Batch oven 2.5 m x 1.8 m x 1.55
- Ideal for low-medium volume
- Automotive finishing





# ASSEMBLY

- Bonding metal-metal
- Final assembly for accesories (Mirrors, sunscreens, handrails)





# IMPERSEALCO PRODUCTS

## NP 300 Stake Body



# IMPERSEALCO PRODUCTS



BART Train  
Handrails

San Francisco,  
USA





# IMPERSEALCO PRODUCTS ON URBAN TRANSPORT HANDRAILS





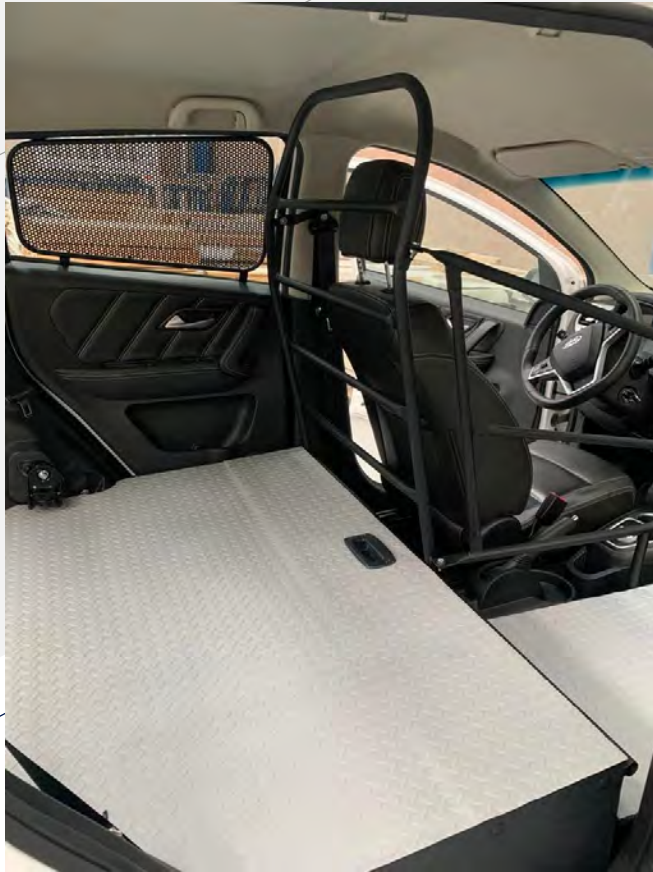
# IMPERSEALCO PRODUCTS

## Conversion Cargo auto March Nissan and Urvan cargo



# IMPERSEALCO PRODUCTS

## Conversion Cargo auto JAC Esei1 Electric and Gasoline





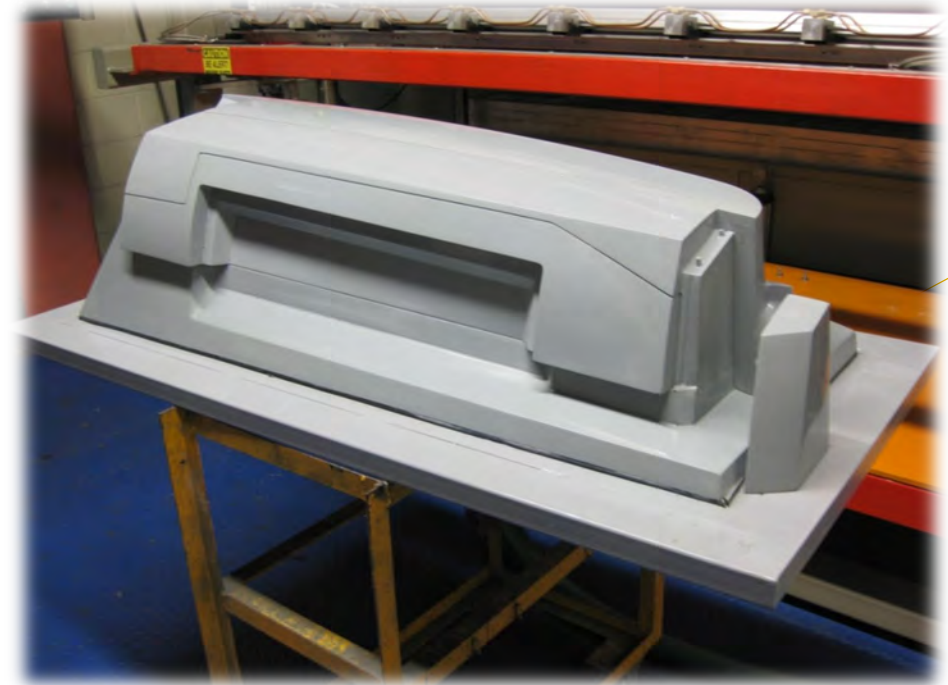
# IMPERSEALCO PROCESSES

## Plastic Division

Thermoforming  
CNC trimming  
Polyurethane

# MANUFACTURE OF THERMOFORMING MOLDS

It has all the infrastructure and technology for the internal manufacture of thermoforming molds and cutting last for thermoforming parts





# PLASTIC DIVISION

## THERMOFORMING

- Two Single station of 4 x 8 Feet
- One Single station of 7 x 11 Feet
- One Three station of 7 x 11 Feet

**Rotary thermoformer 3 stations 7 x 11 Feet**



**Thermoformer Single station 7 x 11 Feet**



**Thermoformer Single station 4 x 8 Feet**

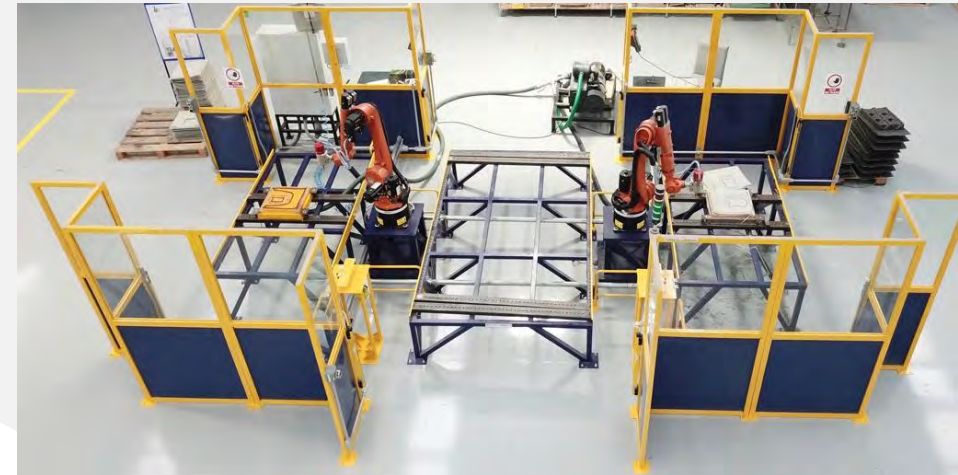
# CNC TRIMMING

- Four Kuka trimming robots
- One simultaneous 5-axis CNC router Double table 10'x 12'
- Two 5-axis CNC router 5'x 10'

**Simultaneous 5-Axis CNC Router  
Double Table 10'x 12'**



**Kuka 6-axis robots**



**Kuka 6-axis robots**





# POLYURETHANE INJECTION

- Mold Manufacturing
- 2 Machines
  - Cannon L-40
    - Capacity 39 g to 39 kg
  - Cannon L-100
    - Capacity 39 kg to 89 kg



# IMPERSEALCO PRODUCTS

Urvan Cargo unit thermoformed molding



Conversion Urvan Load

Cover thermoformed wheel turns



Cargo Tray Organizer



Thermoformed panel covers instruments

Plate door





# IMPERSEALCO PRODUCTS

Luggage racks, air conditioning covers, side covers, roof panel, thermoformed



# CLIENTS



Paccard



Kimball® Hospitality





**IMPERSEALCO**  
S.A. DE C.V.

---

**Thanks for your  
attention!**



Sales contact: Erasmo Avila



CEL PHONE 5514744145 / 55 58315881



eravila@impersealco.com.mx



www.impersealco.com.mx