

# PRODUCT PORTFOLIO

Comprehensive  
Product Offering



Global Manufacturing



Engineered Solutions

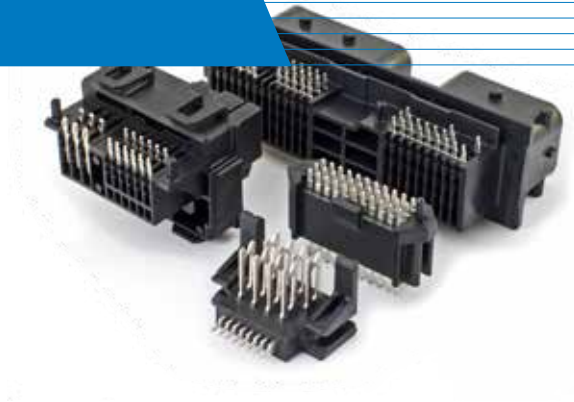


Collaborative Design

# CUSTOM CONNECTORS

Insert Molding | Press-Fit Terminals | Complex Lead Frames

Custom Connectors and Insert molding products incorporate robust press-fit terminals with precision molding and low cost flexible assembly technology.



## VERSATILITY

We focus on innovative, versatile and cost effective solutions tailored specifically to meet your project requirements. From basic molded headers to high-density shrouded connectors where environment and voltage rating are a factor, Autosplice has the experience, resources and expertise to meet your needs.

## CAPABILITIES

- Progressive Die Stamping
- Vertical Insert Molding
- Horizontal Continuous Molding
- Press-Fit Terminals
- Complex Lead Frames & Busses
- Robotic Automation Assembly
- Dispensing UV Cured Materials
- 100% AOI, Hi-pot, and Continuity Testing



### Infotainment / Instrumentation

Terminals, Auto Header, Custom connectors



### Sensors & Fuel Control Modules

Integrated Connector Assemblies, Terminals, Custom Header, Busbars



### Radar Housing

Integrated connector module



### ECU & BCU Control Units

Custom Connector Assemblies, Terminals, Custom Header, Busbars



### Airbag Modules

Integrated connector module



# INSERTION MACHINES

Gen 5 Series High Speed Insertion | Compatible with Pins and Terminals

We have tooling available for solid press-fit, compliant solder less components; PCBs; plastic, ceramic and metal substrates. Additionally, all tooling is transferable across the entire range of insertion systems, accommodating future growth needs.

Our insertion machines are available in single-head or dual-head configurations, offering electronics manufacturers an ideal combination of flexibility and throughput for both high-mix and high-volume production environments.



## MultiSert

Stand Alone or In-line  
with SMT Equipment



## MicroSert

Bench Top Machine



## MiniSert

Designed for smaller footprint applications

## AUTOMATION OPTIONS

- Assembly specific custom automated solutions
- Precision automated optical inspection
- In-line and off-line solutions for automated insertion

# TERMINALS

For PCBA and Molding Insertion



## Press-fit terminals

designed with excellent insertion  
and retention force

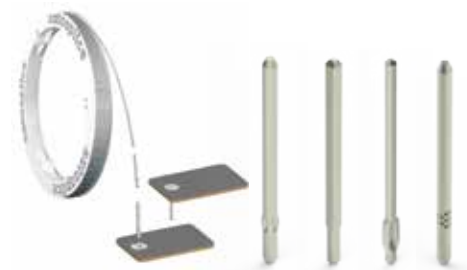
- 0.4 mm coming soon
- 0.64 mm
- 0.82 mm
- 1.2 mm



## Solder tail terminals

progressive die tech provides terminals  
in continuous reeled format

- Blades
- SMT sockets
- Receptacles / Sockets
- Tuning Forks
- Horizontal Blades / Pins



## AP/2 drawn wire pins

large variety of low cost pin sizes for  
high speed automation

- 0.1 mm – 1.2 mm pins
- Press-fit coming soon
- Conforming Semi Press-fit
- Star and Knurl pins

# TERMINAL HEADERS

Press-fit Headers | Solder Tail Headers | Single and Dual Row | Right Angle

Supplied on a reel, Autoheader enables a manufacturer to source a single part number for ease of procurement. Any number of pin positions can be automatically cut from the continuous reel and inserted by industry standard placement equipment. Autoheader products are also available in trays, tubes, or tape and reel formats, pre-cut to your requirements.

Custom headers are easily produced for many standard Telecom, Consumer, Computer and Automotive USCAR socket connectors.



**Press-fit**

Single and Dual Row



**Solder tail**

Single and Dual Row



**Stacking header**



**Blades**

Single and Dual Row



**Pins**

Single Row



**Right angle**

Single and Dual Row



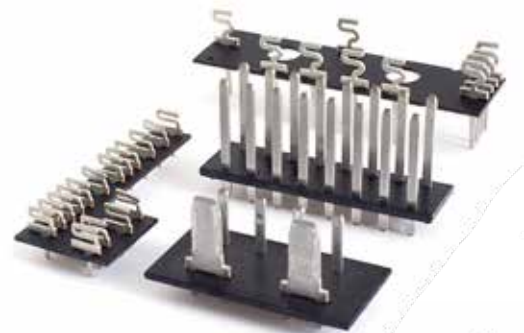
## FR-4 HEADERS

Cost-efficient Custom Headers

Eliminates the need for custom over-molding, while you get a benefit of a custom header at a budget-minded price.

### FEATURES

- Minimize tooling cost
- Quick turnaround prototypes
- Various header thicknesses and colors
- Low cost changes
- Various packaging: bulk, strip form, panels or tape & reel
- Low volume to high volume
- Replace hand placement of components
- Custom designs with quick turn delivery
- Ask us how to package for automation



Solderball Array



Spacesaver SMT Header

# SPLICE TECHNOLOGY

Versatile Splice Applications | Wire Splicing Machines | Spliceband Material

Splice Technology produces gas-tight, repeatable, and waste-free low resistance connections. Splice Technology feeds, cuts, forms and splices connections quickly, eliminating the need for pre-formed crimps.

As the industry leader, our vast tooling library provides solutions to the most challenging wire types and materials. These tooling options accommodate multiple wires, strain relief, magnet wire, tinsel wire, litz wire, and coax wire, of virtually all gauge diameters.

Produced in a variety of material options and sizes, Spliceband® offers greater reliability than soldering with faster throughput.



## ADD-ON OPTIONS

- Crimp Force Monitor
- Mountable camera and a display for smaller applications
- Spliceband available in several widths, thickness and metal types



**Wire-to-Wire**



**Direct-to-Board**



**Strain Relief**



**Magnet Wire**



## SPLICE ASSEMBLY MADE EASY

Use our expertise and unlimited capacity to supplement your existing production or assemble it from scratch.



Splice assembly services performed with lower costs at our manufacturing center in Mexico.



ISO TS16949 quality certification meets your highest manufacturing expectations

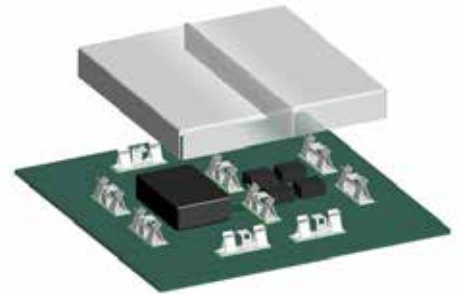
# SURFACE MOUNT TECHNOLOGY

Solderball Pin | Surface Mount Shield Clips and Shields | Socket Receptacles | Space Saver Headers

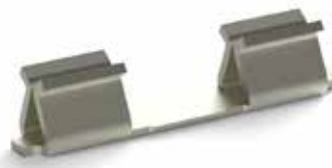
## SURFACE MOUNT SHIELD CLIPS AND SHIELDS

Autosplice shield clips and covers offer premium RFI and EMR noise suppression with two designs, the standard shield clip uses four independent spring contacts and the corner shield clip to minimize interference on the most sensitive devices.

Shield clips are available in EIA standard tape and reel packaging for automated, high-speed assembly placement. Component EMI/RFI shields are made to order to accommodate your device requirements.



Top pick-up



Bottom pick-up



Corner Shield Clip

Our shield clips have manufacturability in mind. Designed with an easy pick-n-place added feature it allows you to grab a clip from the top using standard nozzle versus using a smaller geometrical one while maintaining the solder-wicking hole at the bottom.

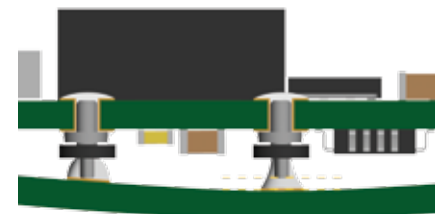
Preferred by most volume assembly manufacturers for ease of use and functionality.



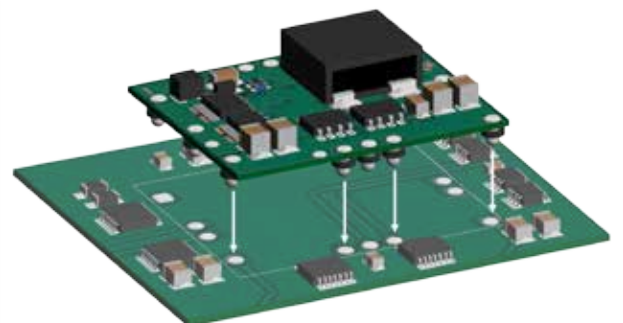
## THROUGH-HOLE AND SMT SOLDERBALL PINS

Standard Solderball Pin products are available with different pin tail configurations, including straight, tapered or double-tiered to accommodate PCB layouts, assembly processes and dimensional optimization.

Solderball Pins have been tested to perform current capacities of up to 40 amps. Packaged in tape and reel formats, Solderball Pins from Autosplice provide a cost-effective solution for today's high density circuits.



After reflow process



# INTEGRATED ASSEMBLY

Power distribution modules | Shape Memory Alloy assemblies

Autosplice offers sub-assembly services with PCBA, terminals, and molding to support your specific industry through one supplier. Flex line approach allows flexibility to support volumes that are less attractive to the big box EMS environments.

Eliminate expensive separate connectors, wave soldering, and selective soldering in favor of more cost-effective processes.



Power Distribution Module



RF Water Meter



Press-fit Antenna Assembly

## SHAPE MEMORY ALLOY DESIGN

Shape Memory Alloy (SMA) Wire Devices use a particular alloy of high strength corrosion resistant Nitinol material that contracts 4% or more when heated and requires much less energy than alternative methods. SMA wire is used reliably in a wide variety of applications, including medical, computer, consumer, automotive and industrial products.



### Design & Development

Design and development of shape memory alloy (SMA) wire assemblies and actuators, incorporating Autosplice's patented crimp technology



### Prototyping

Prototyping of SMA wire assemblies and actuators, by actual tooling or by a combination of actual tooling and 3D printing



### Performance Testing

Life cycle and performance testing of SMA wire assemblies and actuators, including setting up of test protocols, and design and fabrication of test fixtures



Insulin Pump Actuation



Medical Drug Dispensing

## CORPORATE HQ

10431 Wateridge Cr, Ste 110

San Diego, CA 92121 USA

sales@autosplice.com

858. 535. 0077

800. 535. 5538

www.autosplice.com

## CUSTOMER SERVICE

858. 550. 3599

Hours: 7 am - 5 pm PST

## AUTHORIZED DISTRIBUTORS

### **KENSINGTON**

800. 325. 0534

sales@keiconn.com

### **HISCO**

877. 447. 2650

info@hiscoinc.com

### **SCHIFFER CORP**

Spare parts and splice machine representative

269. 465. 3400

gina@schiffercorporation.com

# LET'S PUT MORE THAN 60 YEARS OF INNOVATION TO THE TEST

Autosplice is a global manufacturer involved in design engineering, precision metal stamping, molding, automation and manufacturing of state-of-the-art products for the automotive, medical, telecom and other major industries. We are passionate about developing innovative interconnect solutions for our customers.

Autosplice continually strives to be our customers' first choice in every international market we serve by exceeding commitments, delivering high quality products, and demanding operational excellence while pursuing the highest standards of business practices.