

# COMPARTEC

PLENAMENTE HUMANOS, ALTAMENTE PRODUCTIVOS



# ABOUT US



Compartec is a full humane and highly productive company, dedicated to manufacturing plastic injection parts, in addition to processes that give added value to our products, focused on markets that demand high levels of quality and service, satisfying the needs of our customers, shareholders and society, **always focused on the integral development of our people.**





By 2025 Compartec will be a company that works in a natural culture of excellence. Our constant growth will lead us to total self sufficiency in mold services, secondary processes with high technological demand and at least one additional plant that contributes to import substitution and logistics savings to our customers, always committed to the development of the surrounding communities, making us a producer of talent and becoming one of the most desired companies to work for.

# VISION 2025



# WORK CULTURE

COMPARTEC



# ORG CHART



# QUICK FACTS

- Established **1994**
- Employees **150**
- Working Shifts **3**
- Certification **IATF 16949 April, 2018**
- Productive Area **7,000m<sup>2</sup> 75,350sqft**
- Total Area **20,000m<sup>2</sup> 215,300sqft**

**COMPARTEC**





# ESTRATEGIC LOCATION

## San Juan del Rio, Qro to:

- El Marques, Qro.: 60 Km
- Parque Industrial Querétaro : 77 Km
- México City: 164 Km
- Celaya: 105 Km
- Irapuato: 179 Km
- Leon: 225 Km
- Aguascalientes: 340 Km
- San Luis Potosí: 255 Km
- Puebla: 277 Km



# CAPABILITIES

- 100 to 2100T Injection molding machines
- Tool Shop / 16 Ton Crane
- Build to print Program Management
- In line & offline Assemblies
- 2 CMM / Touch Point & Optical

**COMPARLEC**



## MATERIALS:

- PP
- PC
- POM
- ABS
- PBT
- GPPS
- ABS+ PC
- PA6 & PA66
- GF 30%



# INJECTION MACHINES



COMBIP  
FAR  
LEC

TONNAGE	QTY	ROBOT
<u>2100</u>	<u>1</u>	✓
<u>1300</u>	<u>2</u>	✓
<u>1000</u>	<u>1</u>	✓
<u>750</u>	<u>1</u>	✓
<u>650</u>	<u>4</u>	✓
<u>500</u>	<u>1</u>	
<u>450</u>	<u>1</u>	
<u>400</u>	<u>2</u>	
<u>350</u>	<u>1</u>	✓
<u>300</u>	<u>1</u>	
<u>250</u>	<u>3</u>	✓
<u>200</u>	<u>3</u>	✓
<u>150</u>	<u>4</u>	✓
	<hr/> <u>25</u>	

# TOOL ROOM

PUK Micro Welder



Milling Machine



2 Bench Drills



2 Grinding Machines



2 lathes



# QUALITY LAB



Micro Vu CMM

- X400 - Y450 - Z250
- Zoom: 924x



Zeiss Spectrum CMM

X700 - Y1000 - Z600



Humidity Tester



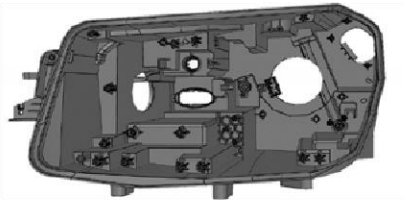
# TEMPORARY IMPORT EXPORT PROGRAM

- COMPARTEC WAS INSCRIBED AND CERTIFIED ON THE TEMPORARY IMPORT/ EXPORT PROGRAM SINCE JANUARY 2022.
- CURRENTLY THIS PROGRAM IS IN OPERATION TO GET THE ADVANTAGE TO ALL CLIENTS THAT WANTS TO HAVE THIS KIND OF TAX BENEFITS.
- HELP TO OUR CLIENT TO EXEMPT OR POSTPONE THE SALE TAX AND GENERAL IMPORTATION TAX IN MEXICO AND USA, HELP TO ACHIEVING THE 65% OF REGIONAL CONTAINED TO IMPROVE THE COMPETIVNESS FOR USA SALES.

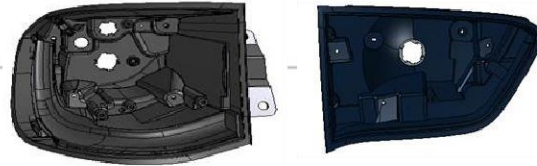


# MAIN AUTOMOTIVE PRODUCTS

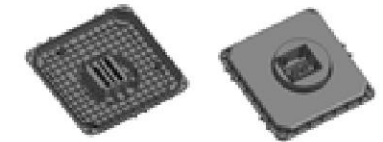
Head lamp / Housing: Eco 500-Top 900  
**VW-Taos**



Tail lamp / Redundant  
**FCA Jeep Compass**



Ecu - FLE2  
**BMW X3 - X4**

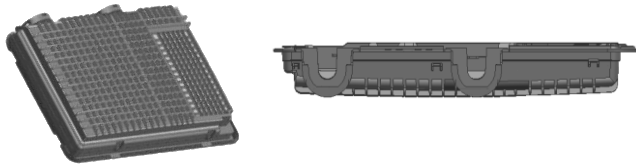


Cap FR/RR  
**VW Taos**



# MAIN APPLIANCE PRODUCTS

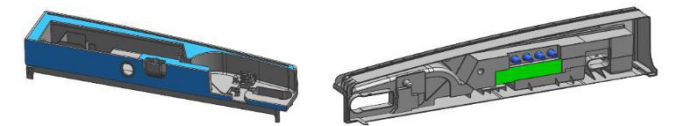
Assy Case PCB Main  
**Refrigerator**



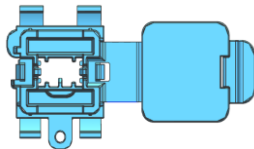
Cap Bowl GAIA  
**Washing Machine**



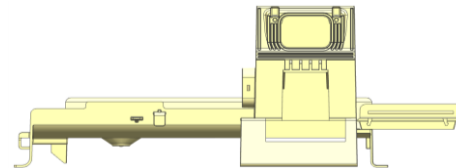
Assy Cap Door Ref  
**Refrigerator**



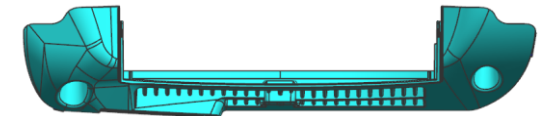
Cover Connector;27"  
**Dryers**



Case Heather French  
**Refrigerator**



Cover filter (B) Dryer  
**Washing Machine**



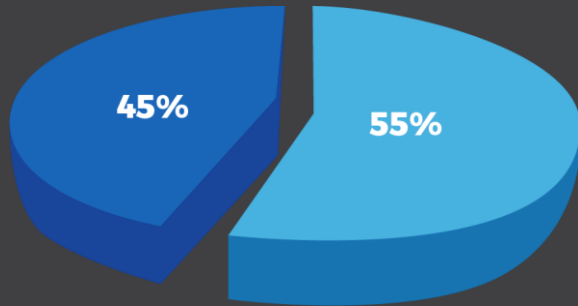
Cover Rail Low R;AW PJT  
**Refrigerator**





# OUR CLIENTS & THEIR LOCATION

## SALES



- Not Automotive
- Automotive

### AGUASCALIENTES



### GUANAJUATO



### EDO. DE MÉXICO



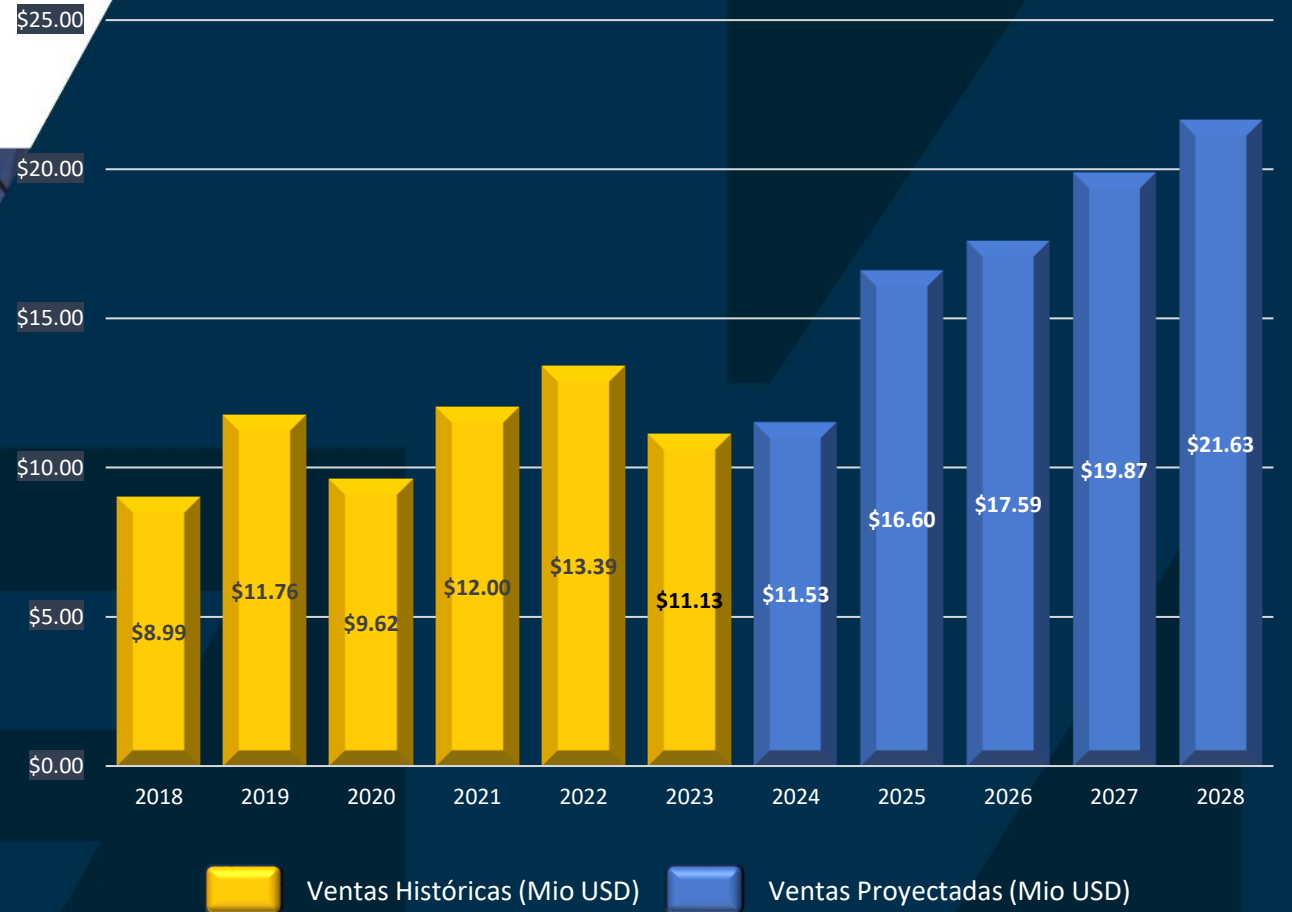
### SAN LUIS POTOSI



### QUERÉTARO



# SALES



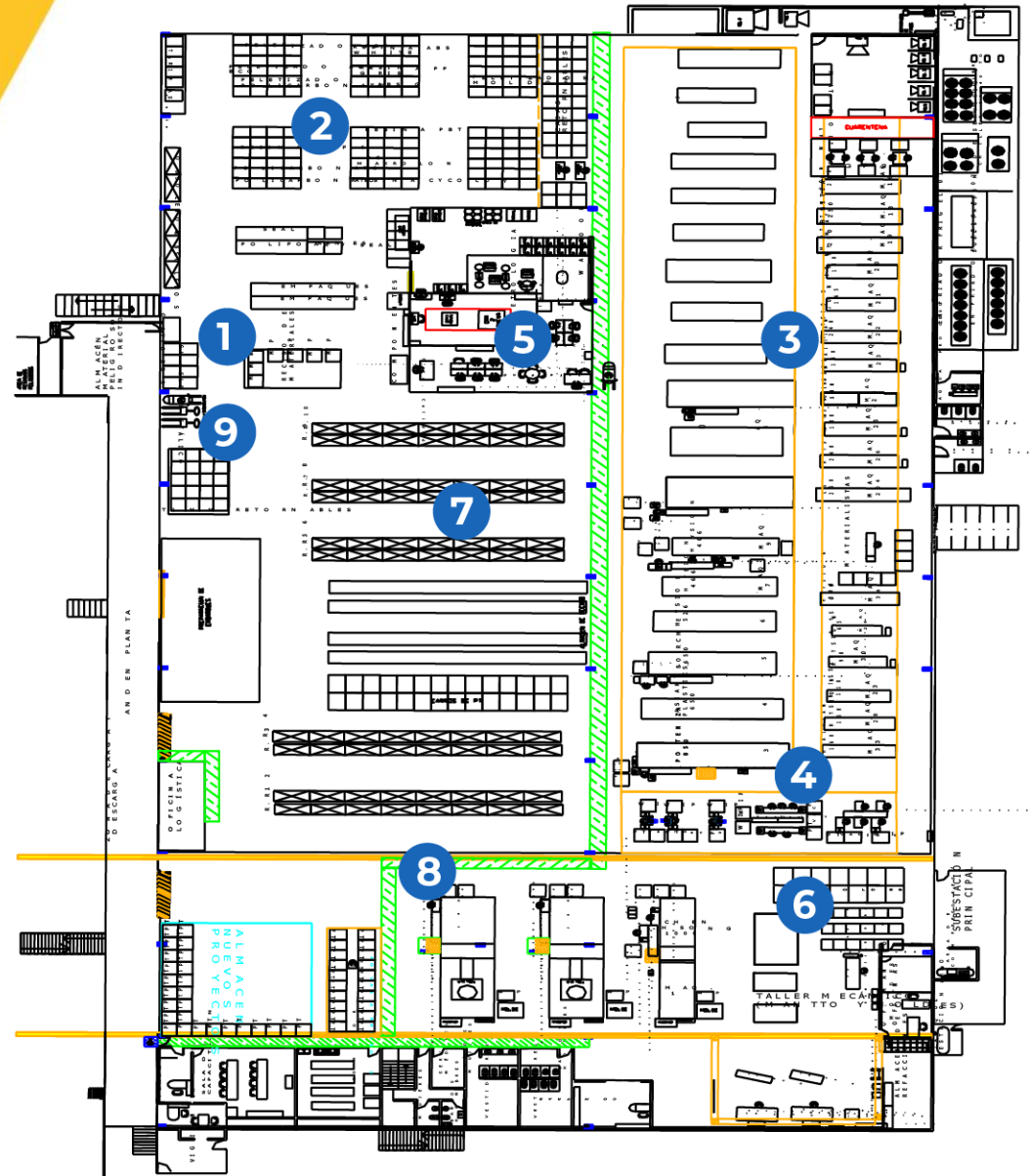
# WHO USES OUR PRODUCTS





# LAYOUT

- 1 Incoming Inspection
- 2 Raw material Warehouse
- 3 Small/Medium Tonnage Injection
- 4 Assembly area
- 5 Quality Lab
- 6 Tool Shop
- 7 FG Warehouse
- 8 High Tonnage injection
- 9 Shipping area



COMPARTEC  
S.A.P.I. DE C.V.

COMPARTEC

THANK YOU

[www.compartec.com](http://www.compartec.com)