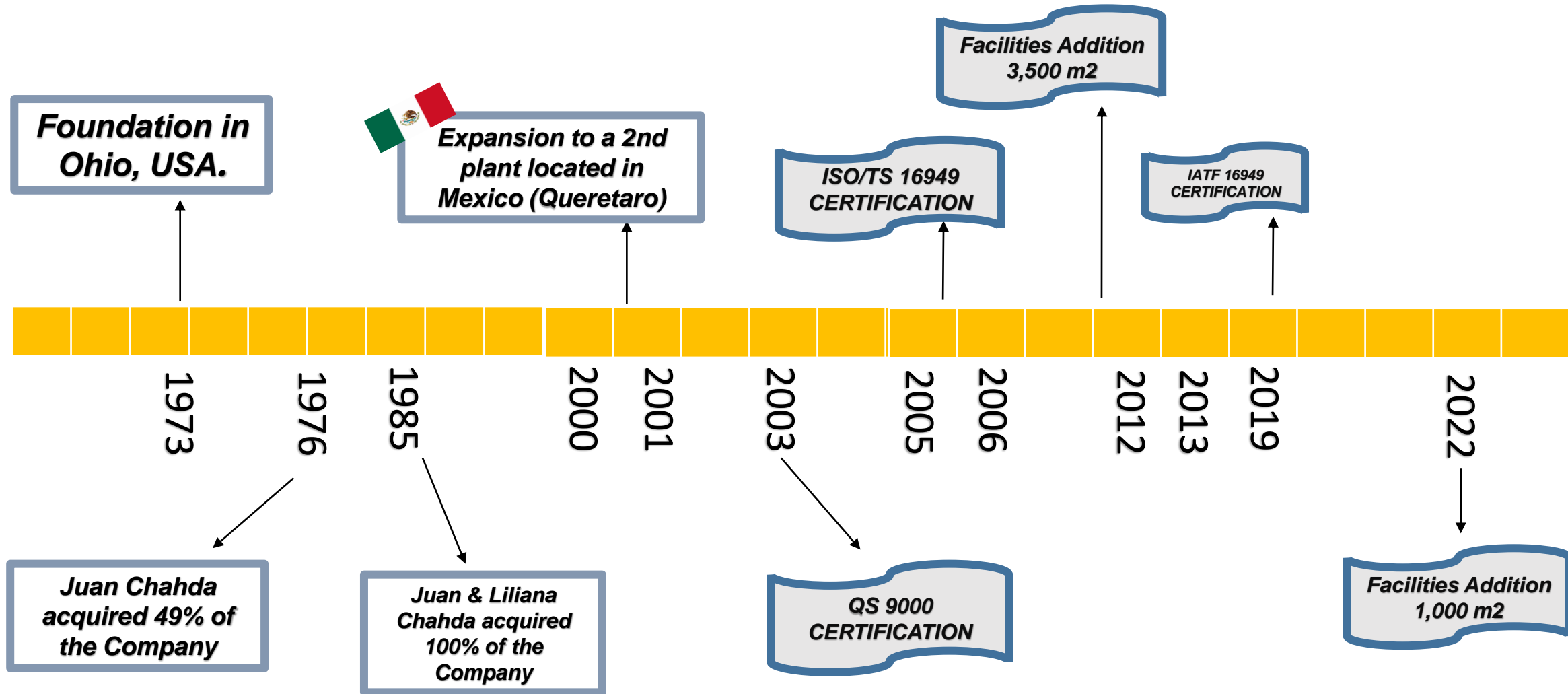


WELCOME / WILLKOMMEN / BIENVENUE / ウェルカム




MILESTONES





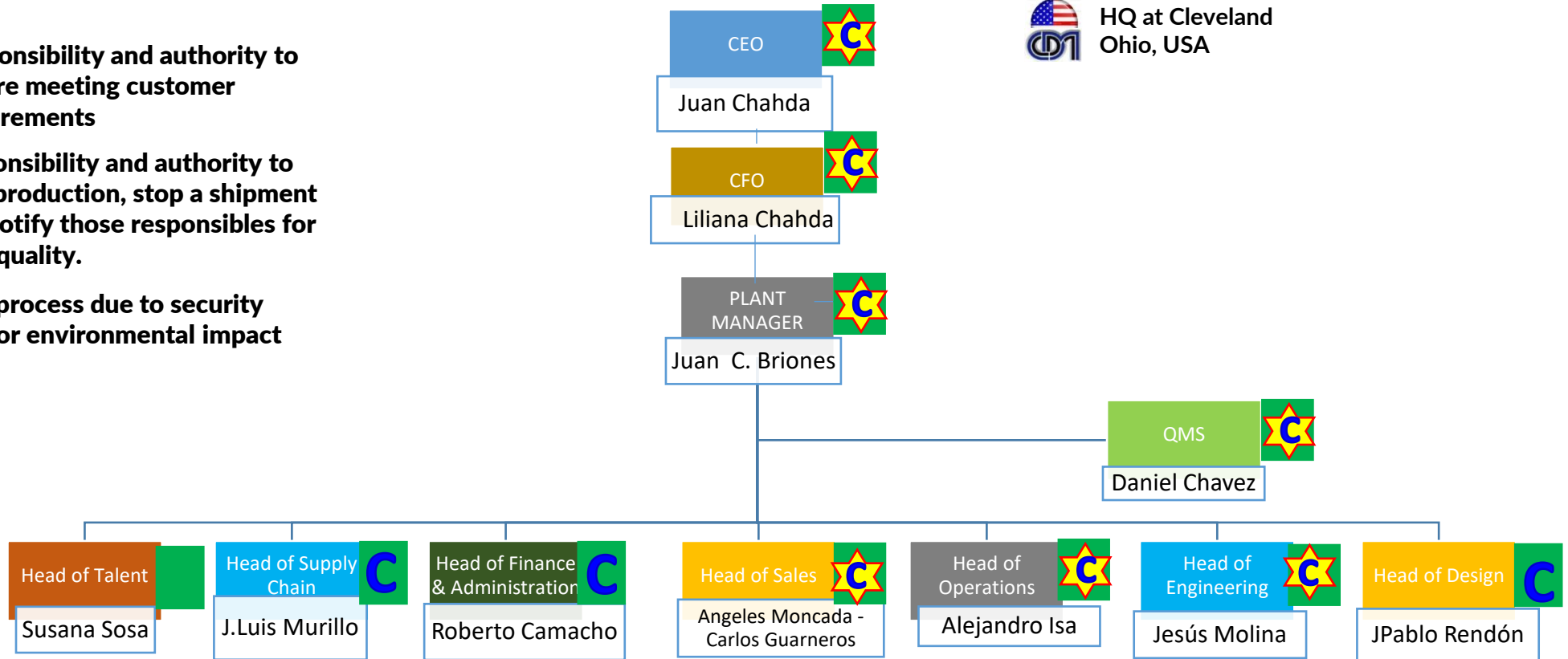
Organization Chart (Management and Heads)

 Responsibility and authority to ensure meeting customer requirements

 Responsibility and authority to stop production, stop a shipment and notify those responsible for poor quality.

 Stop process due to security risks or environmental impact

 HQ at Cleveland Ohio, USA



CERTIFICATE

IATF 16949:2016 Certificate



CERTIFICATE OF APPROVAL

This is to Certify that the Quality Management System of:

Cleveland Die Querétaro S.A de C.V
Circuito Balvanera No.4
Fracc. Industrial Balvanera
Queretaro, Queretaro 76920

(Page 1 of 2; see Appendix)

has been assessed and approved by Smithers Quality Assessments, Inc., to the following quality management system standards and requirements:

IATF 16949:2016 without Product Design

The Quality Management System is Applicable to:
The manufacture, welding, e-coat and plating of metal stampings

Approval Certificate Number: 06.348.1

Current Certificate: December 7, 2021

IATF certificate number: 0437212

Certificate Expires: December 6, 2024



The use of the accreditation mark indicates accreditation in respect of those activities covered by the above certificate number.

The approval is subject to the company maintaining its system to the required standards which will be monitored by Smithers Quality Assessments, Inc., 121 S. Main St. Suite 300, Akron, Ohio 44308, USA


on behalf of SQA - J. Michael Hochschwender, CEO



CERTIFICATE
Valid until
December 6th, 2024

Strategic Planning



Being a leading company in the stamping parts manufacturing market, maintaining high levels of quality and service, being at the forefront of technology and technical knowledge meeting the needs and expectations of our customers; then, contributing to the organizational development and welfare of our partners.

Exceeding the expectations of our customers, giving the best response in a timely manner being their best option, monitoring our performance with world-class indicators.

We manufacture products with the highest quality, delivering on time and meeting the requirements of our customers through a process of continuous improvement. "RIGHT FROM THE FIRST TIME"

PROCESS CAPABILITIES

PROCESS	EQUIPMENT	MONTHLY INSTALLED CAPACITY	UNITS	AVAILABLE CAPACITY %	COMMENTS
STAMPING	19 PRESSES (SEE NEXT SLIDE)	2 M	HITS	67%	<ul style="list-style-type: none"> •AUTOMATIC PRESSES. •SERVO FEEDERS. •SINGLE HIT.
PLATING	1 LINE	70 K	PCS	50%	<ul style="list-style-type: none"> •TRIVALENT. •CLEAR, GREEN AND YELLOW ZINC. •COMPLETE LINE AVAILABLE FOR NEW PROJECT.
E-COAT	1 LINE	100 K	PCS	50%	<ul style="list-style-type: none"> •BATCH LINE. •250 SQ FT PER LOAD. •15 - 25 MICRONS FILM THICKNESS.
WELDING	7 SPOT WELDERS 4 MANUAL MIG 4 MIG ROBOTS 1 SPOT WELDER ROBOT	-----	-----	60% 60% 55%	<ul style="list-style-type: none"> •AVAILABLE FOR NEW PROJECTS.

PRESS LINE UP

PRESSES OPEN CAPACITY										
PRESS	Ton	Length (inches)	Width (inches)	Length (mm)	Width (mm)	Height (Opening)		Height (Opening)		% OPEN
						Max (inches)	Min (inches)	Max (mm)	Min (mm)	
30	800	200"	70"	5080	1778	28"	24"	711	610	37.37%
1	800	156"	52"	3962.4	1320.8	32"	25"	812.8	635	38.87%
2	550	144"	48"	3657.6	1219.2	27 1/2"	17"	698 1/2	431.8	44.94%
3	300	120"	48"	3048	1219.2	25 1/4"	18 1/2"	641.35	469.9	34.94%
4	600	84"	44"	2133.6	1117.6	27 1/2"	19 3/4"	698 1/2	501 2/3	48.96%
5	600	77"	47"	1955.8	1193.8	28"	23"	711.2	584.2	44.20%
6	500	54"	40"	1371.6	1016	22.5"	20.5"	571.5	520.7	60.82%
7	250	120"	50"	3048	1270	21 1/2"	17"	546.1	431.8	44.48%
8	400	96"	60"	2438.4	1524	28"	20"	711.2	508	54.08%
9	300	96"	48"	2438.4	1219.2	33"	29"	838.2	736.6	100.00%
10	150	48"	36"	1219.2	914.4	25"	19"	635	482.6	95.83%
11	150	74"	48"	1879.6	1219.2	18"	15 3/8"	457.2	390.525	88.62%
12	150	60"	36"	1524	914.4	17 5/8"	9"	447.675	228.6	87.88%
13	200	72"	42"	1828.8	1066.8	23 1/2"	17 3/4"	596.9	17 3/4"	72.97%
18	200	70"	32"	1778	812.8	22 1/2"	19"	571.5	482.6	58.23%
20	150	72"	40"	1828.8	1016	23"	18 1/4"	584.2	463.55	85.38%
26	60	31"	21"	787.4	533.4	12 1/2"	9"	317.5	228.6	81.55%
27	60	32"	22"	812.8	558.8	19"	9"	482.6	228.6	100.00%
29	60	32"	21 1/2"	812.8	546.1	16 1/4"	9"	412.75	228.6	100.00%

MEXICO TOOL ROOM

9 CNC's

- MAINTENANCE ACTIVITIES
- ENGINEERING CHANGES & NEW TOOL



MEXICO TOOL ROOM



2 Drills
6 EDM
5 Milling
2 Radial Drills
7 Grinding Machines
1 Lathes

EDM



USA TOOL ROOM



MX PRODUCTION FLOOR (PRESS)



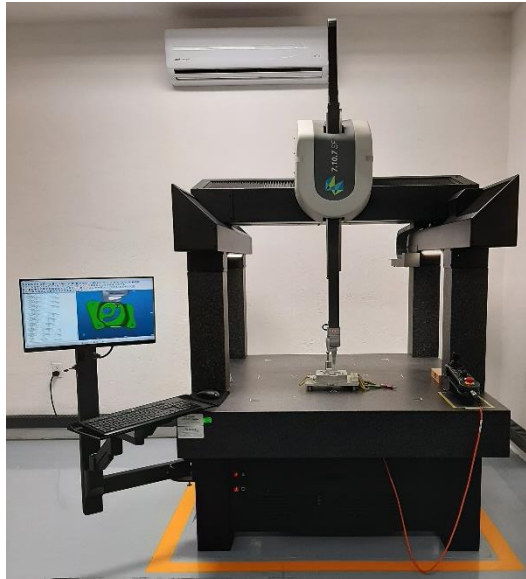
AIDA PRESS – 800T



LASER CUT MACHINE



MEXICO EQUIPMENT & TECHNOLOGY



CMM
Hexagon 7.10.7 SF

Range: X-Axis 0-700 mm
Y-Axis 0-1000 mm
Z-Axis 0-700 mm
Software: PC-Demis V 2022

PROFILE PROJECTOR
MITUTOYO PH-A14
EFFECTIVE DIAMETER 356 mm.
MEASURING RANGE:
X - Y RANGE 203mm* 102 mm
RESOLUTION 0.001 mm
TABLE SIZE: 407mm X 153 mm



LABORATORY



SALT SPRAY CHAMBER



HUMIDITY CHAMBER



**Chambers validated by
CIDETEQ**

OUR CUSTOMERS



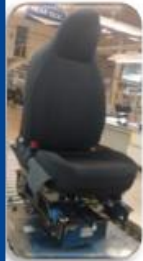
ACPS AUTOMOTIVE



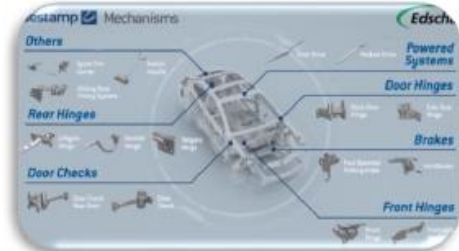
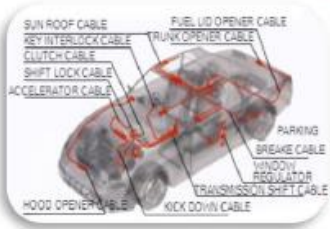
NUESTROS CLIENTES

OBJETIVO

- Conocer a nuestros principales clientes y su ubicación.



MEXICO



Usted esta aquí



YACHIYO

A



S-RIKO

B



TACHI-S

C



TF-METAL

D



SAINT-GOBAIN

E



HI-LEX

F



EDSCHA

G



SETEX

H



MAGNA SEATING

I



ACPS

J



OUR PRODUCTS



HAND BRAKES CONTROL
CABLE SYSTEMS &
WINDOW ELEVATORS



HEAVY TRUCKS AIR
SUSPENSIONS



AUTOMOTIVE SEAT
ASSEMBLIES

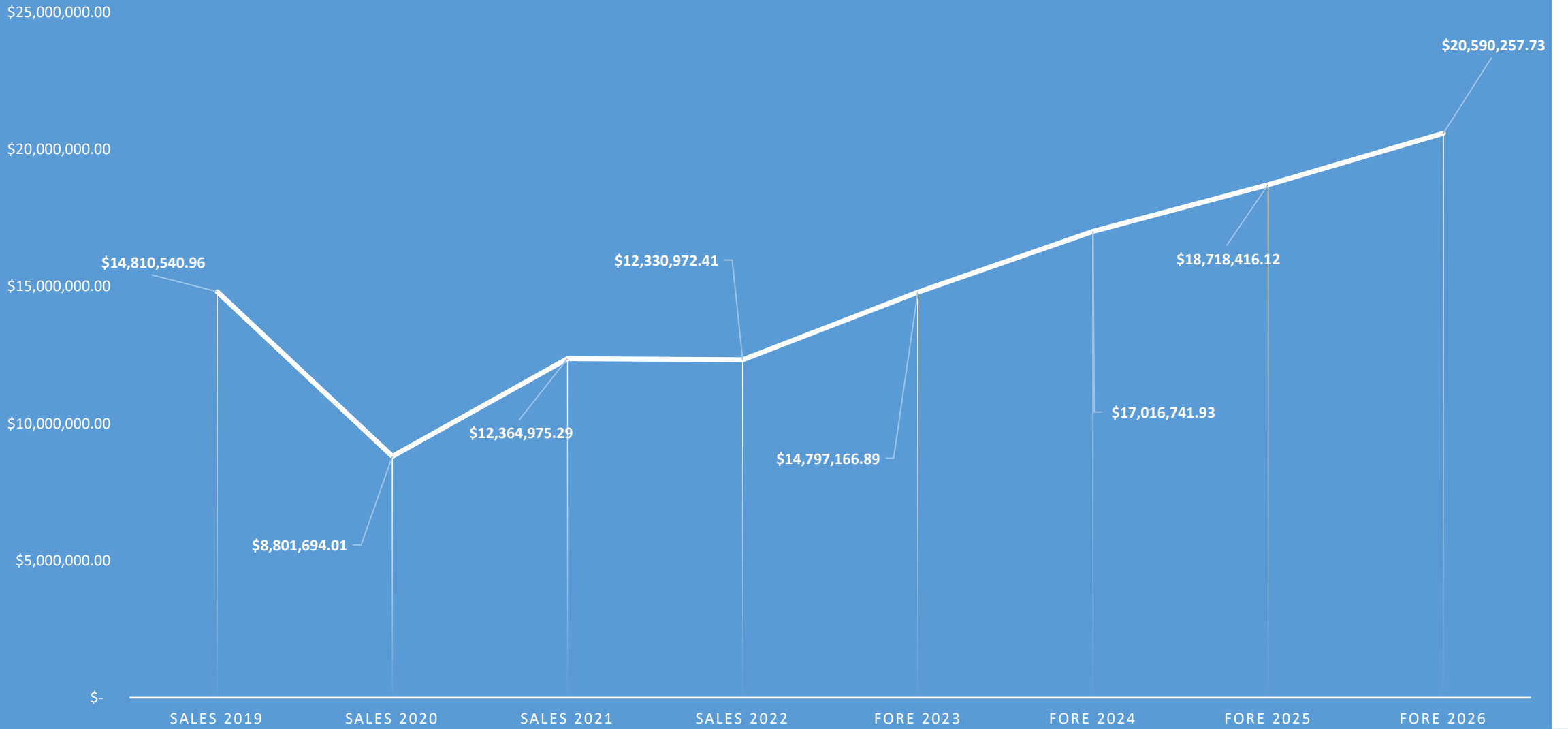


AUTOMOTIVE WINDOW
REGULATORS/SUNROOF
SYSTEM & HEAVY TRUCKS



AUTOMOTIVE SHOCK ABSORBERS &
EXHAUST SYSTEMS

FORECAST 2023 -2026





CLEVELAND DIE
QUERÉTARO S.A DE C.V

**MANUFACTURE, WELDING, E-COAT AND
PLATING OF METAL STAMPING PARTS**

SALES

www.clevelanddie.com

JUAN CARLOS BRIONES AVILA
PLANT MANAGER
M: +52 (442) 174 1130
jcbriones@cdmqro.com

ÁNGELES MONCADA VEGA
COMMERCIAL REPRESENTATIVE
M: +52 (442)-1-561 3371
angeles.moncada@cdmqro.com

CARLOS GUARNEROS
COMMERCIAL REPRESENTATIVE
M: +52 (442)-1-851-7262
cguarneros@cdmqro.com