

# SEQUOIA AUTOMATIC

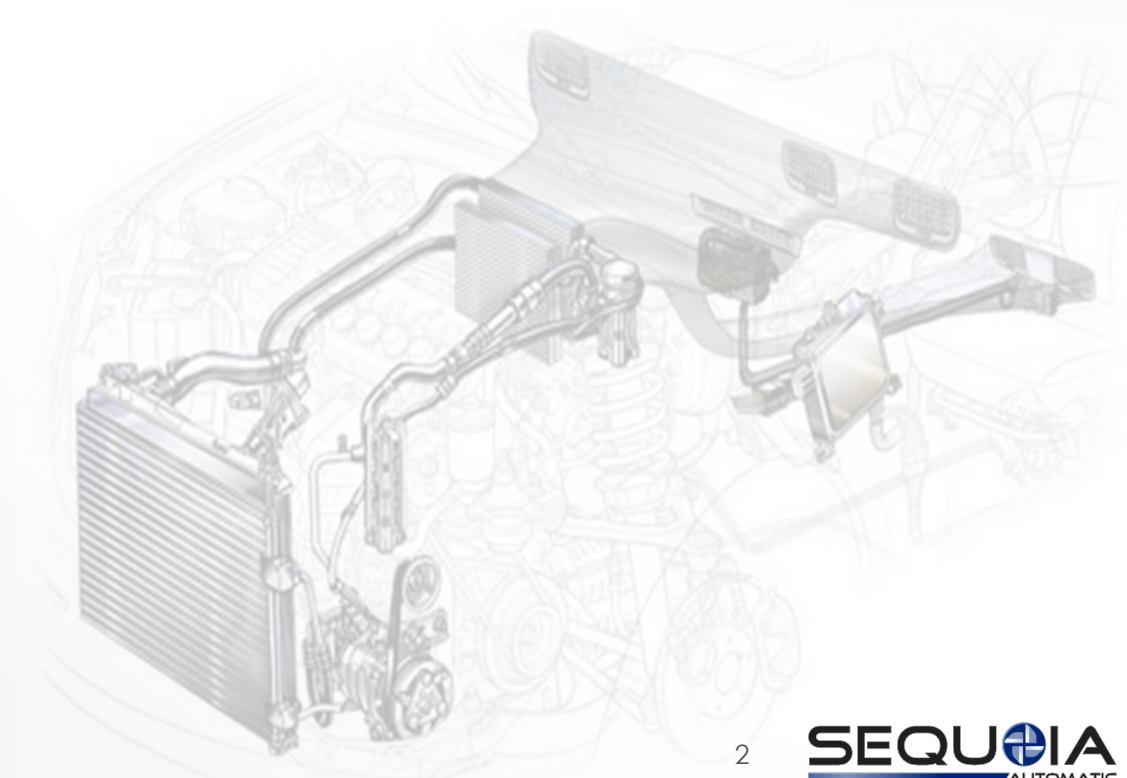
Overview Presentation - 2024



# OVERVIEW

## AGENDA

- **Who we are**
- What we do
- How we do it
- Results



# WHO WE ARE

## *PRODUCTION MACHINING SUPPLIER TO THE AUTOMOTIVE CLIMATE CONTROL INDUSTRY*

### History

**1958:** Founded as an Automatic Screw Machine Shop

**1980's:** Migrated into CNC Machines

**2005:** Established China Operation

**2014:** Added Diecast Production (China)

**2016:** Added Tube Bending production (China)

**2017:** First Rotary Transfer Machine, Established Thailand Operation in Chonburi

**2018:** Established Sequoia Precision Components in Saltillo, MX; IATF Certified

**2019:** Added Cold Forged production (Mexico)

**2022:** Transitioning non-automated production from Crystal Lake production to SMX

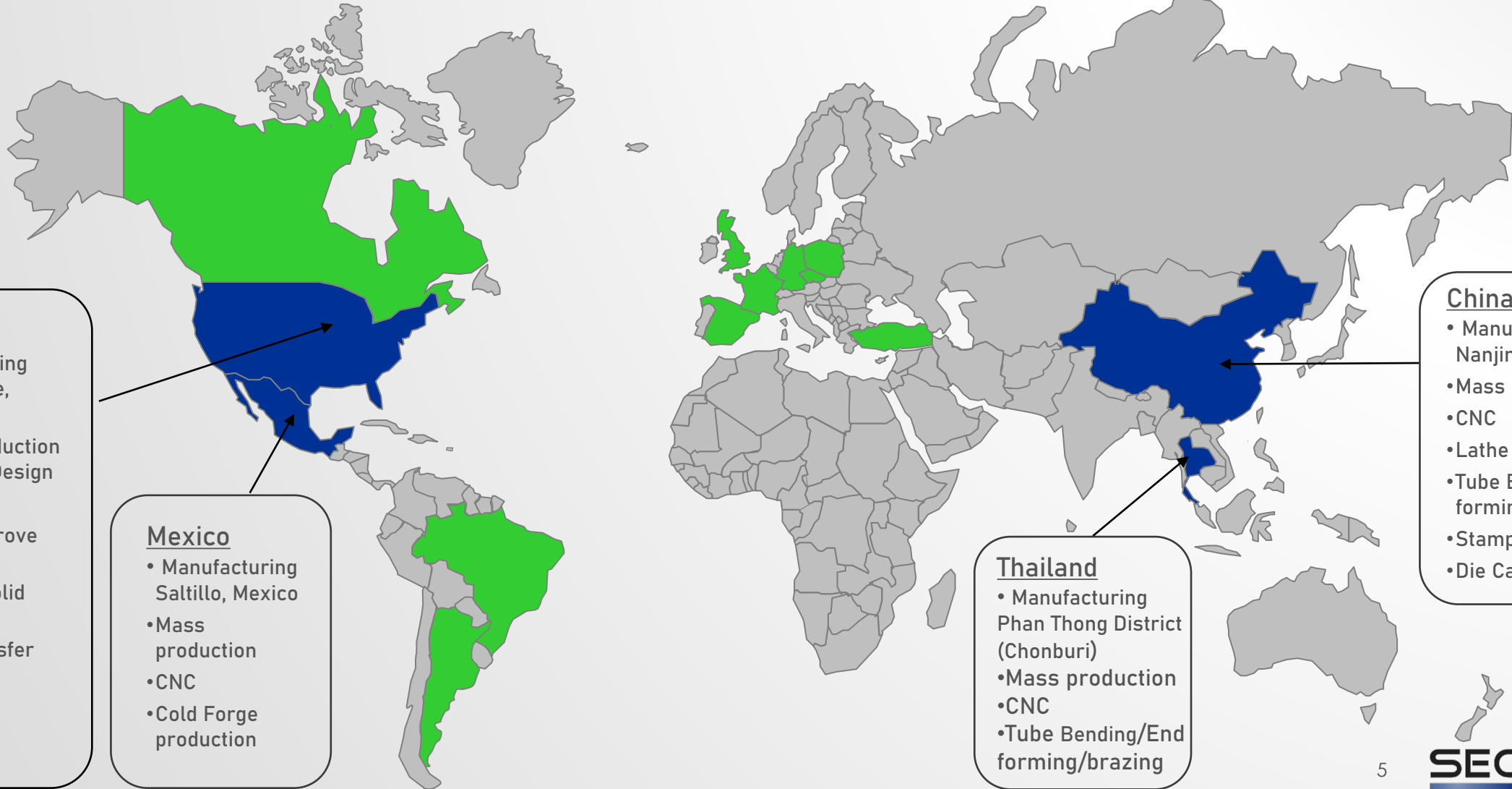


# WHO WE ARE CUSTOMERS



# WHO WE ARE

## GLOBAL FOOTPRINT



### USA

- Manufacturing  
Crystal Lake, Illinois
- Tooling production & Process Design
- CNC
- Prototype prove out
- Hog from solid samples
- Rotary Transfer production
- Heat Sink production

### Mexico

- Manufacturing  
Saltillo, Mexico
- Mass production
- CNC
- Cold Forge production

### Thailand

- Manufacturing  
Phan Thong District (Chonburi)
- Mass production
- CNC
- Tube Bending/End forming/brazing

### China

- Manufacturing  
Nanjing (Gaochun)
- Mass production
- CNC
- Lathe
- Tube Bending/End forming/brazing
- Stamping
- Die Casting



# WHO WE ARE GLOBAL FOOTPRINT

Crystal Lake, Illinois USA



Gaochun, Jiangsu, China



Chonburi, Thailand



Saltillo, Mexico



Gaochun, Jiangsu, China  
(SVDC Die-Cast Plant)



# WHO WE ARE

## GLOBAL FOOTPRINT

### Capabilities

- Extruded Aluminum Alloys CNC Machining
- Heat Sink production
- Die Casting - CN
- Tube Bending Small Assembly - CN
- Cold Forge
- Stamping – CN, TH
- Tube Bending & end forming – CN, TH
- Automatic brazing machines & leakage test – CN
- Ultrasonic Cleaning
- Prototype prove out
- Automated Processes

### Equipment

- **350** CNC VMC's: 27 MX, 16 USA, 277 CN, 30 TH
- **1** Rotary Transfer Machine: USA
- **25** CNC Lathes: CN
- **1** Press Machines (80t): CN
- **7** Die Cast Machines (135T,250T,350T,840T): CN
- **3** Shot Blasting Machines: CN
- Brown & Sharpe CMM's: All Locations

# WHO WE ARE

## USA PLANT

### Crystal Lake, Illinois

- Facility
  - 50 mi. (80 km) Northwest of Chicago
  - 30,000 sq. ft. Facility
  - Tooling Production
- Equipment
  - **14** CNC VMC's
  - **1** Rotary Transfer Machine
  - **3** Production Cutoff Saws
  - **2** Brown & Sharpe CMM's
  - Vibratory Deburring
- **50** Team Members
- IATF 16949:2016 Certified
- **Process Design/Engineering Team**





# WHO WE ARE

# CHINA PLANT

## Gaochun, Jiangsu, China

- Facility
  - 200 mi. (325 km) West of Shanghai
  - 200,000 ft<sup>2</sup> (18,500 m<sup>2</sup>): Manufacturing
  - 52,000 ft<sup>2</sup> (4,800 m<sup>2</sup>): Office
  - 140,000 ft<sup>2</sup> (13,000 m<sup>2</sup>): Dormitory
- Equipment
  - **277** CNC VMC's
  - **20** CNC Lathes
  - **14** Production Cutoff Saws
  - **7** Brown & Sharpe CMM
  - Vibratory Deburring
- **~750** Team Members
- IATF 16949:2016 Certified



# WHO WE ARE THAILAND PLANT

## Chonburi, Thailand

- Facility
  - 37mi. (60 km) Southeast of Bangkok
  - 30,139 sq. ft. Facility
- Equipment
  - **30** CNC VMC's
  - **2** Production Cutoff Saws
  - **1** Brown & Sharpe CMM's
  - Vibratory Deburring
- **~80** Team Members
- IATF 16949:2016 Certified



# WHO WE ARE MEXICO PLANT

## Salttillo, Mexico

- Facility
  - 55 mi. (90 km) West of Monterrey
  - 72,000 sq. ft. Facility
- Equipment
  - **27** CNC VMC's
  - **1** Production Cutoff Saws
  - **2** Brown & Sharpe CMM's
  - Vibratory Deburring
- **~145** Team Members
- IATF 16949:2016 Certified

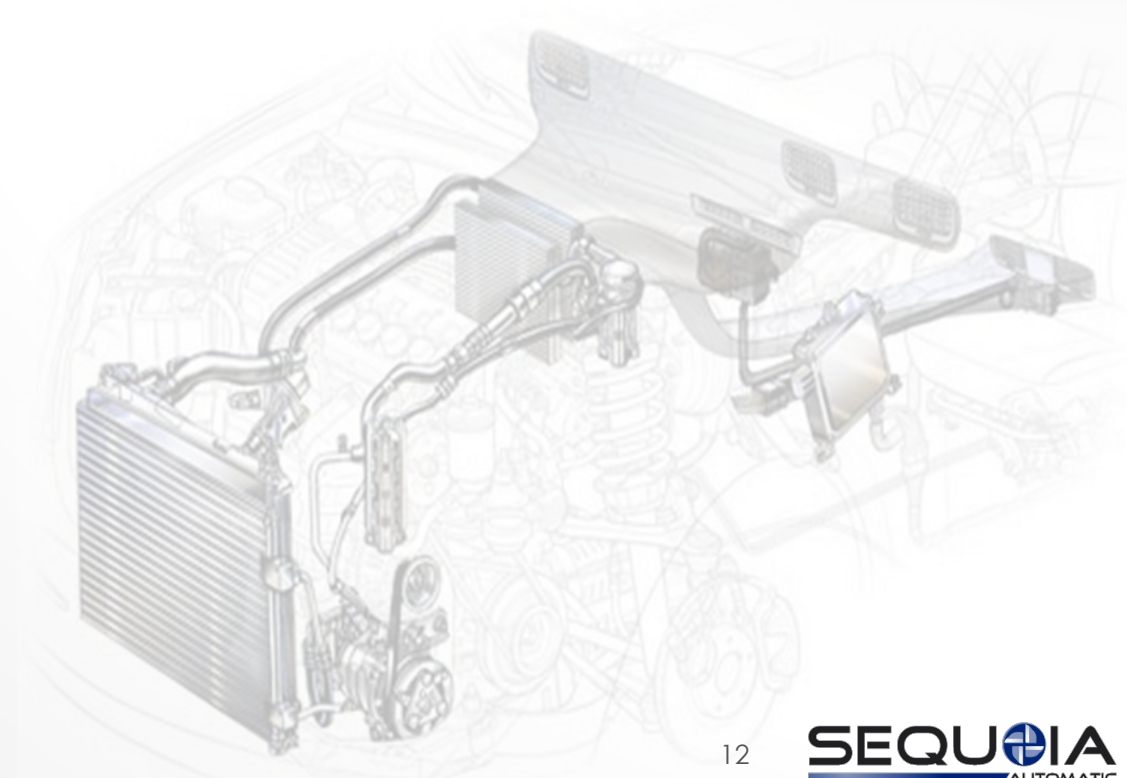




# OVERVIEW

## AGENDA

- Who we are
- **What we do**
- How we do it
- Results



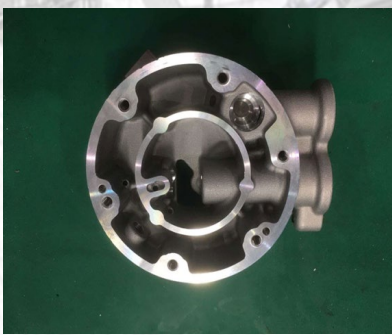
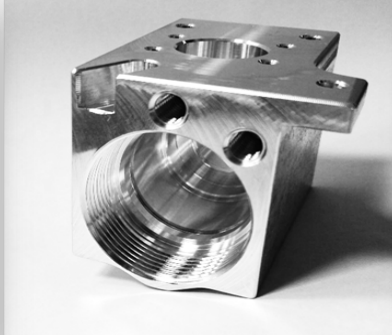
# WHAT WE DO – GLOBAL CONTRACT MANUFACTURING

- High-volume Production Machining
  - Specializing in Aluminum
- Diversified Capabilities
- High Quality Parts
  - Very low PPM's
  - Very low occurrences
- Delivered On-time
  - Off-tool Samples
  - PPAP
  - Production
- Competitive Cost Structure

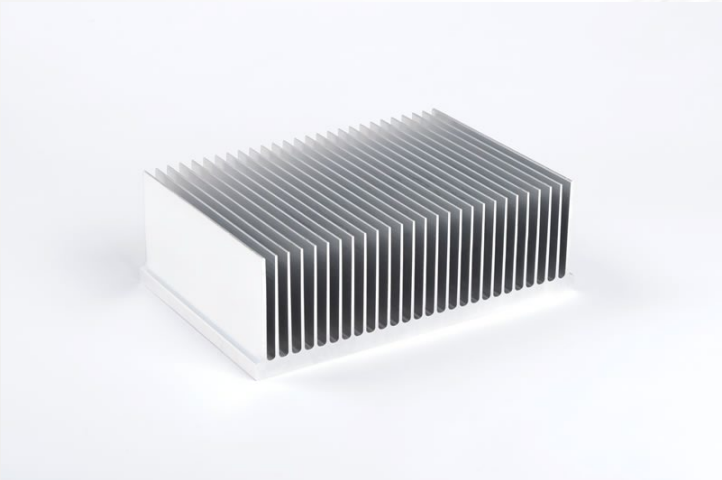




# WHAT WE DO



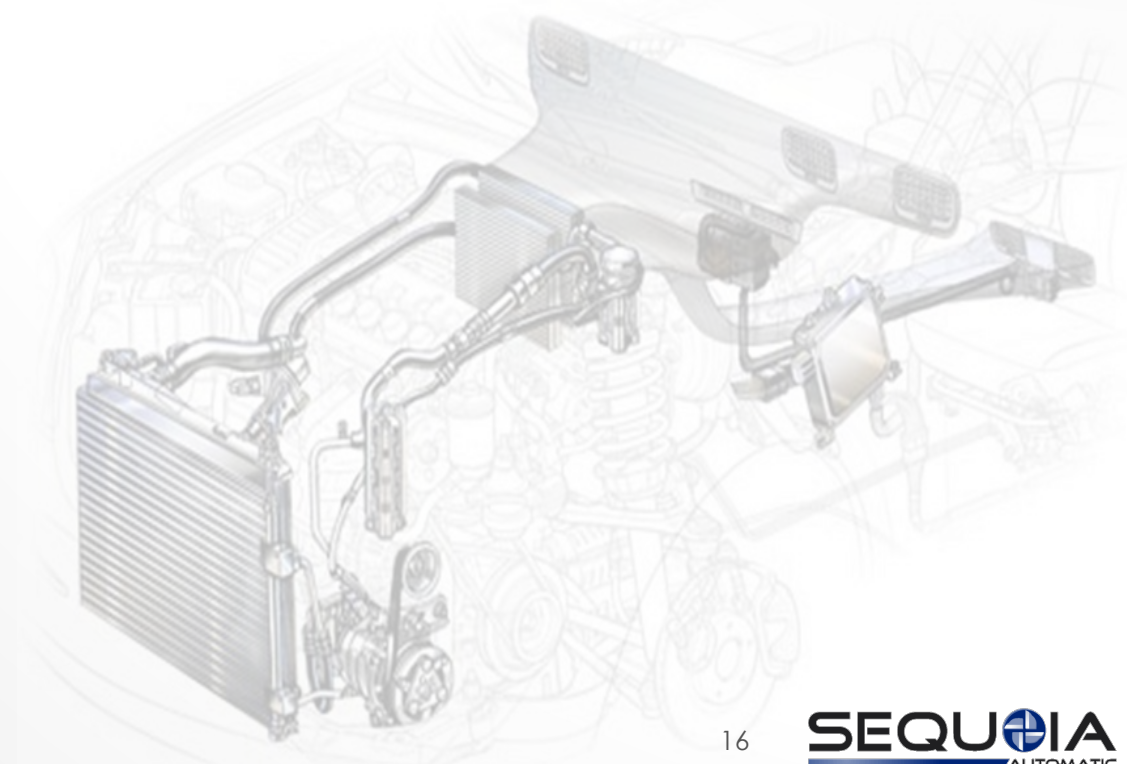
# WHAT WE DO



# OVERVIEW

## AGENDA

- Who we are
- What we do
- **How we do it**
- Results





# HOW WE DO IT

- **Manufacturing**

- Mature/Proven Manufacturing Systems
  - Solid Foundation with Demonstrated Quality, Delivery, & Efficiency
- Process Flow / PFMEA / Control Plan

- **Engineering**

- Cross-functional Global Team (Engineering, Quality, Material, Production)
- Workholding Fixture Design/Build
- Custom Cutting Tool Design
- 50+ years Engineering experience



# DISCUSSION