

**iemsa**

科鑫精密

CARE PRECISION



INDUSTRIA DE

PHOENIX PRECISION

# ESTAMPACIONES METÁLICAS

S.A. DE C.V.



# APPLICATION + OEMs

- AUTOMOTIVE Parts

- Brackets
- Reinforcements
- Supports
- Chassis
- Door Systems
- Canister Closure
- Interior Parts
- Seat Belt Brackets
- Light System Support



- PERSONAL CARE

- Dispensing Systems for shampoo, soap, etc...

- OEMs

- L'Oreal
- Neutrogena
- Blumen
- Etc...



- TOOLS

- Work Stands

- OEMs

- Lowes
- Home Depot
- Amazon
- Bauhaus



- APPLIANCES Parts

- Stoves Components
- Hinges
- Visual
- Safety





# NEW PROJECTS

## CUSTOMERS

Magna

Silgan

Affinity Tool Works

Mabe

Linde+Wiemann

Edscha

Macauto

Stant

Ashimori

ZKW

Cosma

TIMS

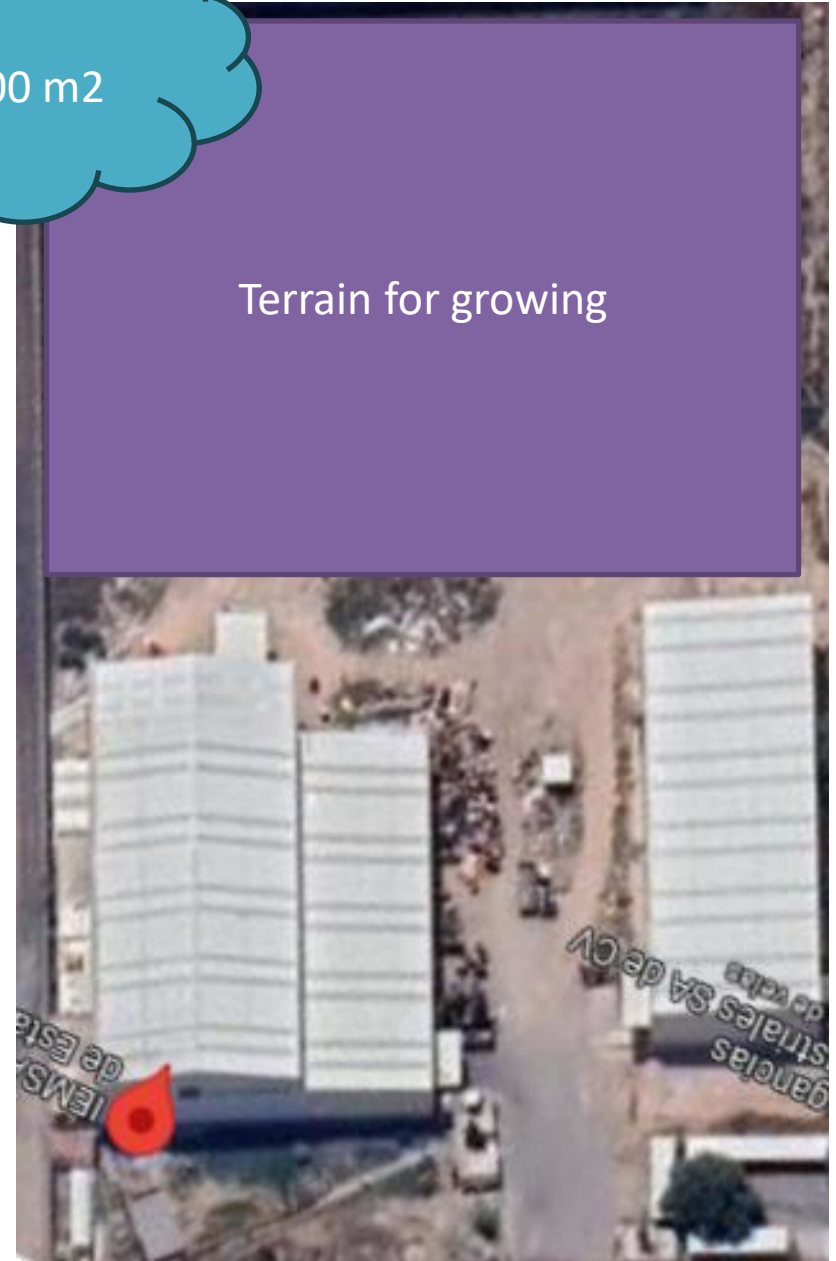
Daikin

Gestamp



23,000 m2

Terrain for growing



# BUSINESS MODELS

We have a solid supply chain in Mexico  
and we can work:

- a) Maquila
- b) Transfer Project
- c) Project Development



# GLOBAL PROJECTS

We currently export to China, South  
Africa & USA with ExW incoterm  
hand by hand with customer

We can import tools hand by hand  
with customer





# MEANS OF PRODUCTION



## SPECIFICATIONS OF PRESSES & ROLLFORMING LINE

BRAND	TYPE	(ton.)	TABLE (mm)	SHUT HT (mm)	SLIDER (mm)	STROKES p/min.	STROKE c.
Jundiai	Progressive	800	1,800 x 4,000	1,000	300	25 gpm	300
<i>Feeder servo (Alimentador) Ancho (1,300 mm) Para espesores hasta 6mm</i>							
Arisa	Progressive	600	1,400 x 3,200	850	400	25 gpm	200
<i>Feeder servo (Alimentador) Ancho ( 1,000 mm) Para espesores de hasta 5mm</i>							
Arisa	Progressive	400	1,200 x 2,400	750	25-500	35 gpm	125
<i>Feeder servo (Alimentador) Ancho ( 800 mm) Para espesores de hasta 4mm</i>							
Jundiai	Progressive	400	1,200 x 2,400	750	25-500	35 gpm	90
<i>Feeder servo (Alimentador) Ancho ( 600 mm) Para espesores de hasta 4mm</i>							
Arrasate	Progressive/M anual	200	900 x 1,400	440	20-200	40 gpm	90
Arrasate	Progressive/M anual	200	840 x 1,350	420	20-160	35 gpm	90
<i>Feeder servo (Alimentador) Ancho ( 300 mm) Para espesores de hasta 2mm</i>							
Lataintek	Rollforming	CRS/Galv	Max. 2TN	t=0.5-2mm	15M/min	ID 460-520mm	OD 1200

# CAPACITIES METAL COMMODITY

0.5-6mm  
Thickness

45-1300 mm  
coil width

0.5-15 TN  
coil weight

Aluminium,  
SS, CRS, HRS

Progressive,  
Rollforming

Tool  
Maintenance  
Room



MIG Welding

Spot Welding

Assemblies

Riveting

Threading

Overmolding

# MEANS OF PRODUCTION



No.	Brand	Tonage	Model	Year of manufacturing	Screw diameter (mm)	Injection capacity (PS) g	Injection pressure( Mpa)	Injection stroke (mm)	Screw Speed (RMP)	Clamping force (KN)	Ejector stroke	Space between tie bars HxV (mm)	Max Die Height (mm)	Min Die Height (mm)	Movable side core pull	Fixed side core pull	Pneumatic Valve gate
1	Haitian	280	MA2800II	2017	60	669	184	260	0-265	2800	150	630 X 630	630	230	YES	YES	YES
2	Belken Bole	260	BL260EKII	2017	60	754	168	290	0-210	2600	190	660 X 610	610	240	YES	YES	YES
3	Haitian	280	MA2800II	2017	60	669	184	260	0-265	2800	150	630 X 630	630	230	YES	YES	YES
4	Belken Bole	350	BL350EKII	2017	65	977	170	320	0-175	3500	190	710 X 660	690	270	YES	YES	YES
5	Haitian	380	MA3800II	2017	70	1127	182	322	0-160	3800	180	730 X 730	730	280	YES	YES	YES
6	Belken Bole	350	BL350EKII	2017	65	977	170	320	0-175	3500	190	710 X 660	690	270	YES	YES	YES
7	Haitian	480	A28300	2019	65	845	180	150	0-250	3000	150	720 X 720	650	240	YES	YES	YES
8	Haitian	120	ZE1200 III	2021	36	177	200	300	400	1200	100	470x470	470	150	YES	NO	YES
9	Milacron	240	Roboshot	2021	52	7.8in/sec	1600 psi	425	300	2200	150	900x900	750	250	YES	YES	YES



# RAW MATERIALS

PP, PE, ABS  
(IN ALL  
FORMS)

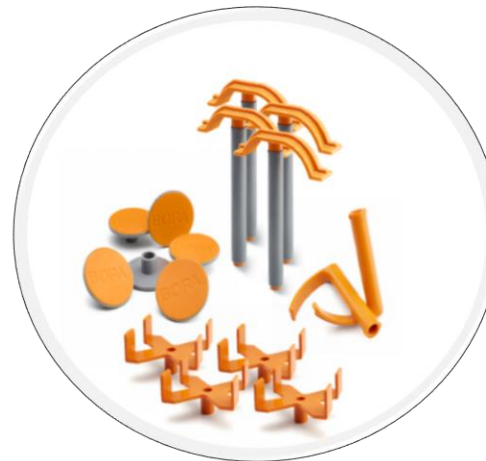
PA (IN ALL  
FORMS)

TPE, TPU,  
ELASTOMERS

PBT (IN ALL  
FORMS)

POM

HOT & COLD  
RUNNERS



MASTERBATCH

LIQUID  
PIGMENT

DUST PIGMENT

PRE-COLOURED  
RESINS

COLOR  
DEVELOPMENT

HIGH & LOW  
CAVITIES



科鑫精密  
— CARE PRECISION —



# 重庆科鑫精密工业有限公司

Chongqing Care Precision Industrial Co., Ltd

ONE-STOP SOLUTION FOR PRECISION JOBS

Injection Mold    Tooling Spare Parts  
Stamping Die    Carbide & Ceramics  
Metal Component    Automatic Lathe Products

[www.care-precision.com](http://www.care-precision.com)

ISO 9001:2015

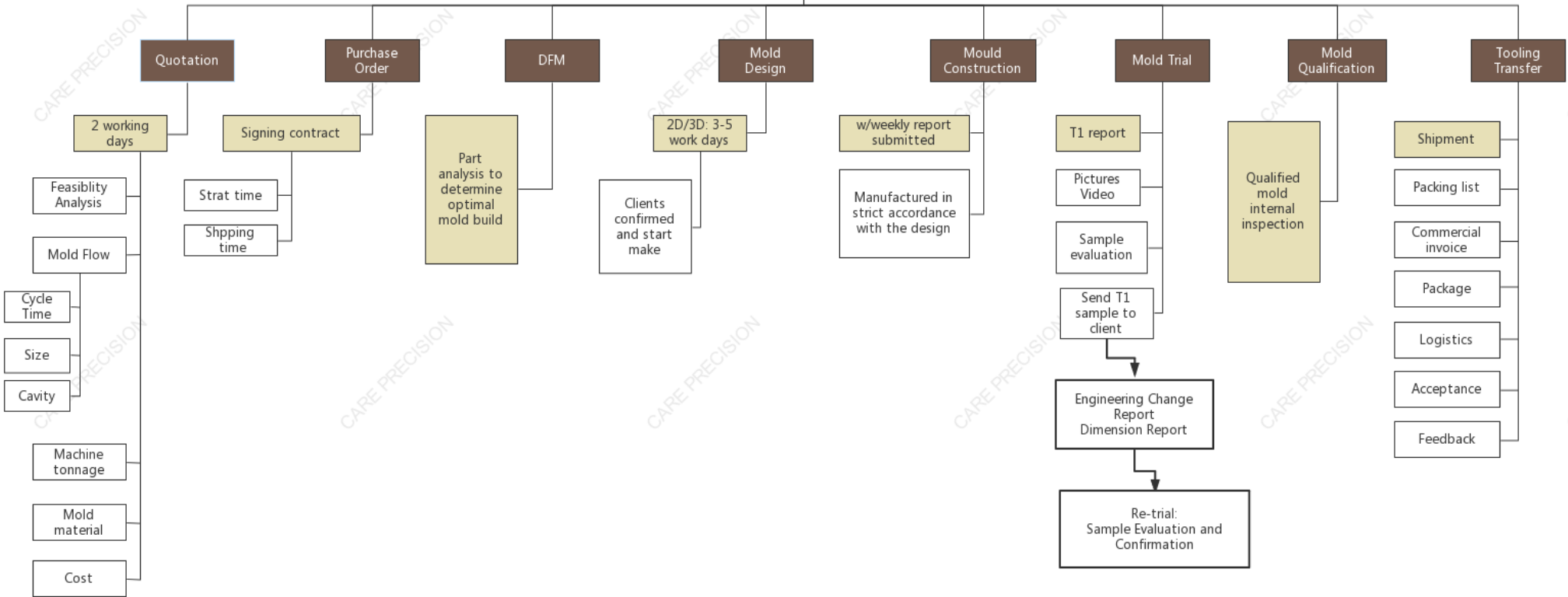
Follow us on



@Careprecisionindustrial



# MOLD DEVELOPMENT PROCESS







## Injection Mold

Serving industries with high-quality molds and mold parts  
Committed to providing the ultimate customer experience

We provide mold design, manufacture and injection molding, mainly used in the following industries:

- Automotive connector Mold
- Data-communication 5G related product Mold
- New energy related product Mold
- Medical related Mold
- General electronic Mold
- Aersopace related Mold

## Stamping Die

Serving electronic industries with high-quality stamping die and stamping, Pursued to provide the ultimate customer experience

We provide stamping die design, manufacture and stamping, mainly used in the following industries:

- Terminal stamping Die
- Progressive die
- Forming Die
- Stage Die
- Compound Die



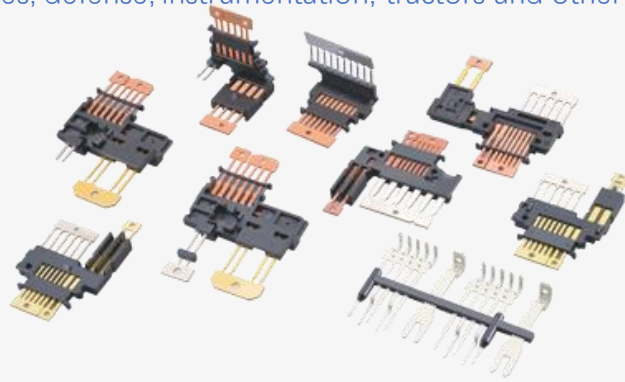


## Stamping Product

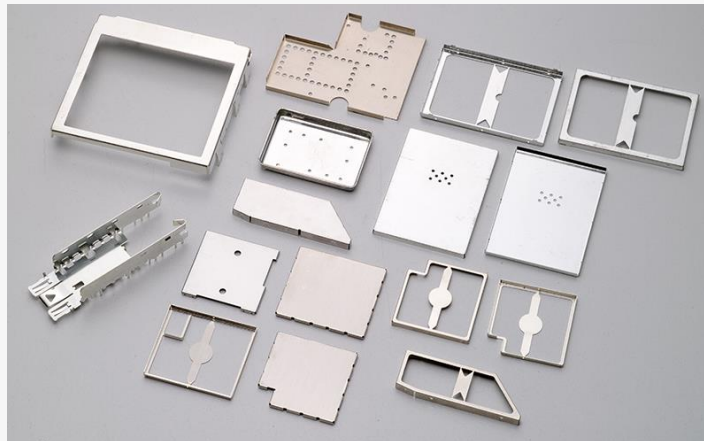
Care precision's goal is that stamping technology has been applied to more fields. These fields include automotive, electronics, aerospace, appliances, defense, instrumentation, tractors and other industries



3C Products



Connector



Shielding Case



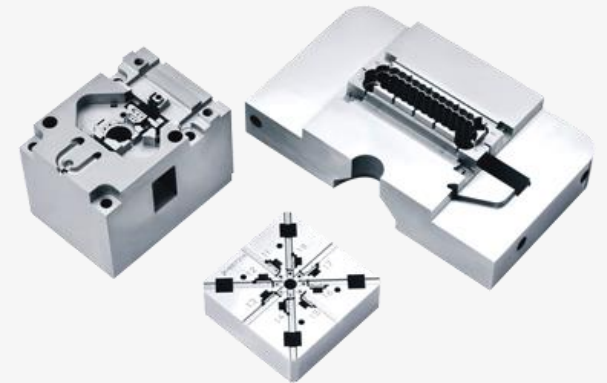
Automotive Parts





## Tooling Spare Parts

Product size: customized  
Contour tolerance:  $\pm 0.002\text{mm}$   
Thickness 0.6mm Pore 0.06mm  
Grinding tolerance: 0.001mm  
Discharge tolerance: 0.002mm  
Discharge clear angle:  $\pm 0.01\text{mm}$   
Polishing finish: RA0.05  
Concentricity, parallelism;  $\pm 0.001\text{mm}$   
WEDM: 0.005mm





## Carbide and Ceramics

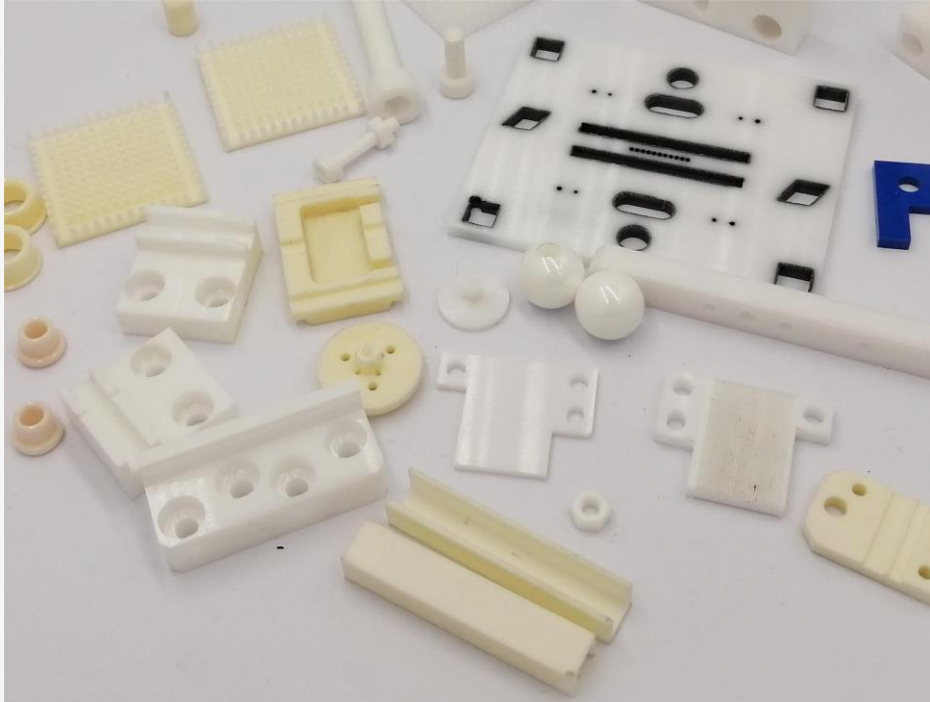
We have been thinking about how to make parts better and serve more industries, so we found that carbide and ceramics are difficult matters in the processing industry today, but we have overcome difficulties and served them to our customers in various industries now.



Product size: customized  
Contour tolerance: 0.002mm  
Grinding tolerance: 0.001mm  
Discharge tolerance: 0.002mm  
Discharge clear angle:  $\pm 0.015$ mm  
Polishing finish: RA0.02  
Concentricity, parallelism;  $\pm 0.001$ mm  
WEDM: 0.005mm



We have reliable suppliers to provide us with various coatings to prolong the service life of parts, including:  
**CrN, TiN, TiCN, TiC, WC/C, TiAlN, DLC, etc.**



### Ceramic parts

Material:  $\text{SiO}_2$  &  $\text{ZrO}_2$

Product size: customized

Contour tolerance: 0.002mm

Grinding tolerance: 0.001mm

Discharge tolerance: 0.002mm

Discharge clear angle:  $\pm 0.015\text{mm}$

Polishing finish: RA0.05

Concentricity, parallelism;  $\pm 0.001\text{mm}$

### Advantages

High strength, high hardness, moisture-proof, wear-resistant, stain-resistant, corrosion-resistant, high-temperature resistant, easy to clean, small deformation, good insulation, and has a certain resistance to rapid cooling and rapid heating.

## Automation component

The automation component can be made according to the customer's drawing or samples to meet the customer's requirements. The automation components are widely used in factory automation products, such as Auto-feeder, mechanical arms, automatic assembling machines, etc. The parts can be processed with surface treatment and assembly according to the customer's requirements.



Product size: Customized  
General tolerance: 0.01mm  
Grinding tolerance: 0.005mm  
Discharge tolerance: 0.01mm  
Discharge clear angle:  $\pm 0.01\text{mm}$   
Surface finish: Customized  
Concentricity, parallelism;  $\pm 0.01\text{mm}$   
WEDM: 0.005mm





## Automatic Lathe Processing Products

Our company provides automatic lathe processing, providing customers with a variety of lathe processing services and automatic lathe processing parts. For various industries, especially the electronics industry supporting orders for all kinds of sophisticated automatic lathe processing.



Product size: Customized  
General tolerance: 0.01mm  
Grinding tolerance: 0.01mm  
Discharge tolerance: 0.01mm  
Discharge clear angle:  $\pm 0.01\text{mm}$   
Surface finish: Customized  
Concentricity, parallelism;  $\pm 0.01\text{mm}$   
WEDM: 0.005mm



Automotive Industry

5G Communication Related



## Our Equipment

High-precision equipment guarantees high-precision products. All our engineers have more than 15 years of experience in using high-precision equipment.



Haitian Injection Molding Machine



High Speed Precision Punch Machine



CNC Machining Center



Automatic CNC Lathe



Makino EDM



Seibu Wire Cutting



Mazak Turning



ZEISS CMM

# Care Precision Equipment List

	Equipment Classification	Brand	Country of origin	Quantity( set)	Moldel Number	Purchased Year	Machining Accuracy
Processing Equipment	Grinder	Joen Lih	Taiwan, China	9	618#	2011	±0.001
	Centerless Grinding Machine	Joen Lih	Taiwan, China	1	SM-12S	2010	±0.001
		Stute	suzhou, China	3	YN80-25	2012	±0.001
		SeiBu Wire-EDM Electrode Cutting Machine	Japan	3	M50B	2017	±0.001
		Mazak	Japan	3	QUICK TURN 200L /15T5.2	2018 2021	±0.005
	CNC	Beijing JD CNC	Beijing, China	1	CARVER 400V AL	2014	±0.01
		Beijing JD CNC	Beijing, China	2	CARVER 400T A10 5AXIS	2018	±0.01
		Beijing JD CNC	Beijing, China	1	CT600E A13S	2019	±0.01
		Beijing JD CNC	Beijing, China	1	PMS23-A8	2019	±0.01
		Beijing JD CNC	Beijing, China	2	JDGR 400 AI5SH	2013	±0.01
		Bar Feeder	suzhou, China	2	XT320-S2	2019	±0.01
		GUHRING		1	GSS-2000	2015	±0.01
		Jiuding	Chongqing	3	4s	2022	±0.01
		Hermle	Germany	1	C30U	2016	±0.005
		I5	shengyang,China	2	T3	2016	±0.01
	EDM Machine	MAKINO	Japan	4	EDGE2	2013 2014 2015 2016	±0.001
		Mitsubishi	Japan	4	EA8	2012 2014	±0.002
	CNC PRECISION AUTOMATIC LATHE	Star	Japan	3	SB-20R YPEG	2017 2018 2021	±0.008
	Lathe-Mill Cutting Center	Jieshida	China	2	CL46	2021	±0.015
	Laser marking machine	Xianwei	China	1	SW-QXGW20A	2014	
Injection Molding Machine	Haitian	China	3	100T/150T/320T	2022		
	FANUC	Japan	3	30T/50T/80T	2023		
High Speed Punch	GUOYI	China	5	30T-500T	2022	200-2000/min	
Detection Tools	Projector	Nikon	Japan	5	V-12B	2020	±0.001
	Height Guage	Nikon	Japan	10	MF-501	2021	±0.001
	2.5D Measurement	Rational	Taiwan, China	1	VMSS-1510F	2019	±0.001
	Hardness Tester	MC	Germany	1	HR-150A	2018	±0.1HRC
	CMM	Zeiss	Germany	1	Spectrum	2021	0.001
	Tool Microscope	Nikon	Japan	2	MM40	2019	

见附件



“Everything you can imagine,  
Our goal is to manufacture it”



Eje 140, N° 145, Zona Industrial,  
78395.  
San Luis Potosí, S.L.P., México

B10, Intelligent Manufacturing  
Industrial Park, Hufeng Avenue,  
Bishan District,  
Chongqing, China 402760



WhatsApp: +52 (444)-548-1311



WhatsApp: +86 (131)-01233 222



Name: Aida Mercado Salazar  
Email: [a.mercado@iemsaslp.com.mx](mailto:a.mercado@iemsaslp.com.mx)  
Website: [www.iemsaslp.com.mx](http://www.iemsaslp.com.mx)

Name: Jerry Hu  
Email: [jerry.hu@care-precision.com](mailto:jerry.hu@care-precision.com)  
Website: [www.phxmold.com](http://www.phxmold.com)