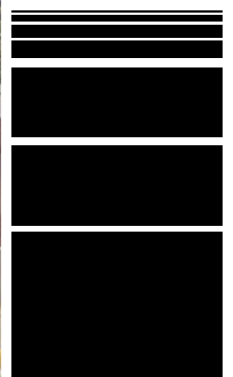


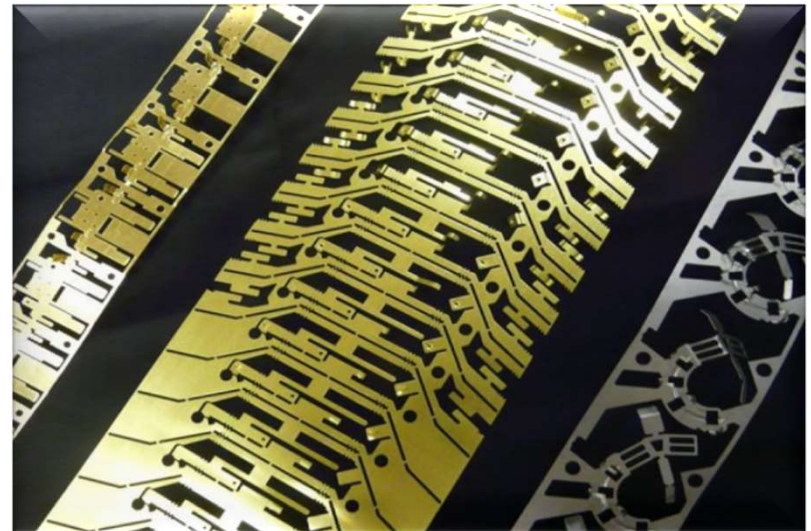


smallparts
INCORPORATED
Excellence & Service with Integrity



CELEBRATING
50+
YEARS

- **Company Overview**
- **Company Locations**
- **History**
- **Corporate Structure**
- **Company Structure**
- **Company Facilities**
- **Segments Served**



Jerry Villalobos

Business Development Manager

Small Parts Inc.

600 Humphrey St

Logansport, IN 46947

956-777-5294

Doug Azbell

VP Sales & Marketing

Small Parts Inc.

600 Humphrey St

Logansport, IN 46947

574-739-6323

Ben Stephenson

Customer Service

Small Parts Inc.

600 Humphrey St.

Logansport, IN 46947

574-739-6227

Tyler Hiser

Application Engineer

Small Parts Inc.

600 Humphrey St.

Logansport, IN 46947

574-739-6261

What We Are

- Provider of metal stampings & assemblies
- Serving select markets with customized engineered solutions
- With particular expertise in
 - Non-ferrous applications
 - Ferrous applications requiring spring qualities
- And a focus on the “3 C’s”
 - Complex
 - Critical
 - Close
- North American footprint
- IATF 16949 certified

How We Do It



“Excellence & Service with Integrity”

INTEGRITY

Doing the right thing

EXCELLENCE

Doing things right

SERVICE

Doing things with the right attitude

- **1958: SPI opens in 4,000 sq. ft. building as a multi-slide and spring supplier**
- **1963: SPI relocated to current Logansport, IN location with 15,000 sq. ft.**
- **1968: Doubled SPI plant and office space in 1968.**
- **1973: Major SPI plant expansion**
- **1975: Formed Materials Processing Inc. (MPI)**
- **1975: ABC Metals was purchased by MPI**
- **1975: HTI joined MPI as a 50:50 joint venture**
- **1982: SPI began to supply the auto industry**
- **1986: Started SPI assembly plant**
- **1994: HTI was purchased by MPI**
- **1995: Opened SPI facility in Juarez Mexico**
- **2000: Opened SPI facility in Reynosa Mexico**
- **2009: Opened Company health clinic in Logansport**
- **2010: Established technical sales center in Plymouth, MI**
- **2015: Launched market segment strategy**
- **2019: Acquired Precision Stamping Solutions Inc. in Beaumont, CA**
- **2021: Divested ABC Metals**
- **2022: Transitioned from a Privately Owned Business to an ESOP**





**BUILDING BUSINESSES
ENRICHING LIVES**

smallparts
INCORPORATED



Logansport Stamping



Juarez,
Mexico



Logansport Assembly



Reynosa, Mexico



Beaumont, CA
Stamping and Plating

hti



Logansport, IN

- Structured by Market Segment
 - T&S: transmission & safety
 - P&S: power and signal
 - ELEC: low voltage distribution & meters
 - GEN: general stampings
- Each Small Parts facility serves each segment



- **Automotive** (Transportation & Safety, Power & Signal)
 - **Application Focus**
 - **Legacy** – Internal Combustion Engine (ICE)
 - Powertrain Components
 - Safety Components
 - **Active Growth** – EV
 - Busbars
 - Terminals
 - Connectors
 - Shielding
 - **Capabilities Supporting Applications**
 - HPA & HG Copper Scale
 - Complex Slide Forming
 - Servo Press Stamping
 - High-Speed Precision Stamping
 - US & Mexico Locations





Midwest- Logansport, Indiana



Juarez, Mexico

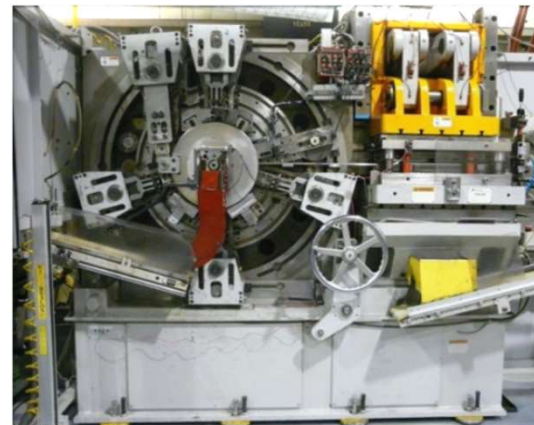
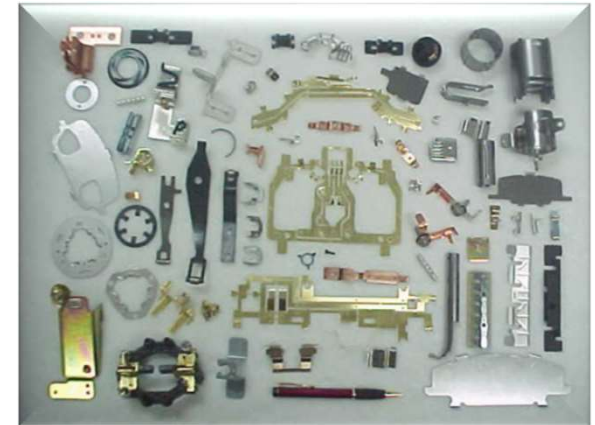
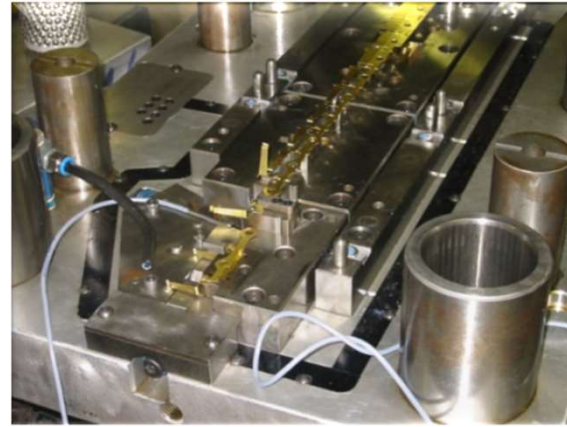


Reynosa, Mexico

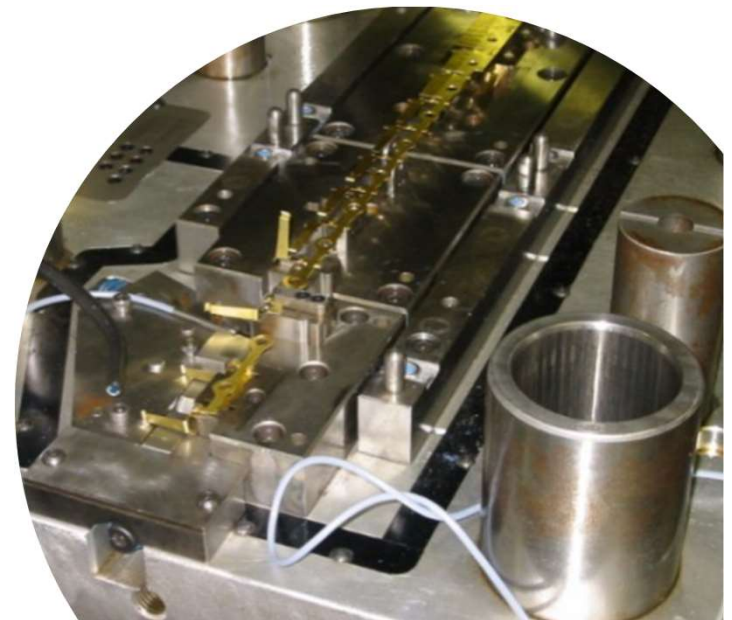


Beaumont, CA

- Centralized location for
 - Engineering
 - Project Management
 - Customer Service
 - Materials Management
 - Administration
- 133,000 square feet, 2 buildings
- 223 employees
- Production Equipment
 - 72 Multi-slides - 751, 28, 33, 35, 620
 - 21 Punch Presses - 22 to 125 ton capacity
 - 2 Servo Presses – 176 & 121 ton AIDA
 - 2 Rotary Slides – RF80, RF150
 - 2 Hovis Stamping Machines
 - In-House Tool Design, Build, & Maintenance
- Value-add Capabilities
 - Secondary operations- manual & automatic
 - Welding, tapping, riveting, staking
 - Assembly
 - Automated qualification systems
 - Vision, eddy current, calibration
 - Tumbling & De-bur
 - State-of-the-art cleaning systems



- In-House Tool Design & Fabrication
- Market Segment Application Engineers
- Dedicated Team of design engineers
 - 6 Wire EDM Machines with 24/7 operations
 - Haas, Matsuura and Hyundai CNC Machining Centers



- 76,000 square feet
- 105 employees
- Production Equipment
 - 13 Multi-slides - 751, 28, 33, 35
 - 18 Punch Presses - 32 to 275 ton capacity
 - 1 Hovis Stamping Machine
 - 1 Turret Press
 - 1 Press Brake
 - In-House Tool Design, Build, & Maintenance
- Value-add Capabilities
 - Secondary operations- manual & automatic
 - Welding, tapping, riveting, staking
 - Assembly
 - Bus bar fabricating
 - Automated qualification systems
 - Tumbling & De-bur
 - State-of-the-art cleaning systems



- 65,000 square feet
- 62 employees
- Production Equipment
 - 8 Multi-slides - 751, 28, 33, 35
 - 24 Punch Presses - 22 to 300 ton capacity
 - 1 Hovis Stamping Machine
 - 1 Roll Former
 - In-House Tool Build, & Maintenance
- Value-add Capabilities
 - Secondary operations- manual & automatic
 - Welding, tapping, riveting, staking
 - Assembly
 - Silk screening
 - Automated qualification systems
 - Tumbling & de-bur
 - Parts cleaning systems

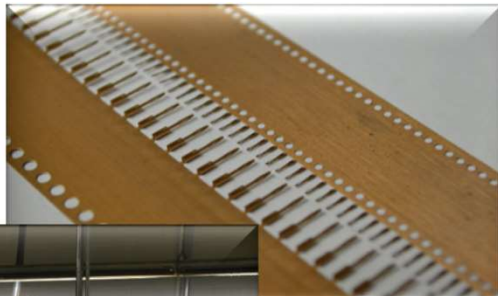
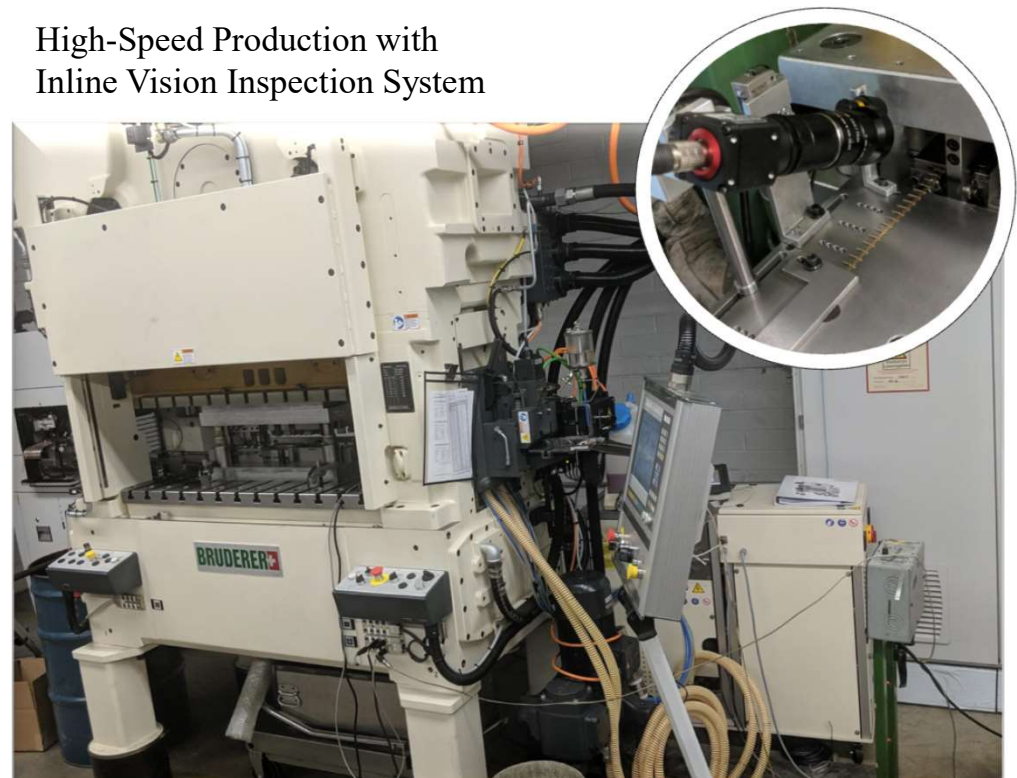


- 30,000 square feet, 2 buildings
- 42 employees
- Production Equipment
 - Bruderer High Speed Presses
 - In-House Tool Build, & Maintenance
 - Plating (including selective)
 - Heat treat
- Value-add Capabilities
 - Secondary operations- manual & automatic
 - Automated qualification systems

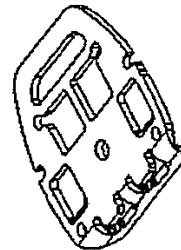
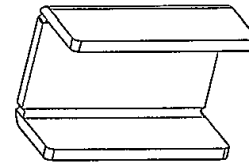
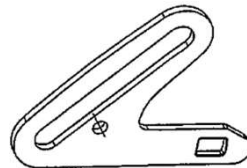
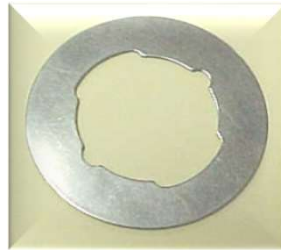
In House Reel to Reel Plating



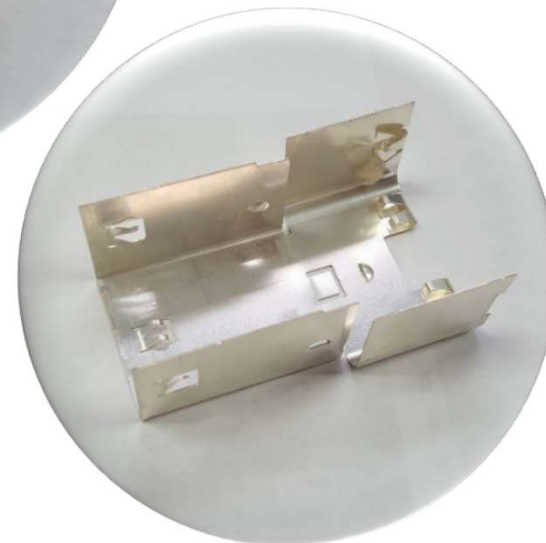
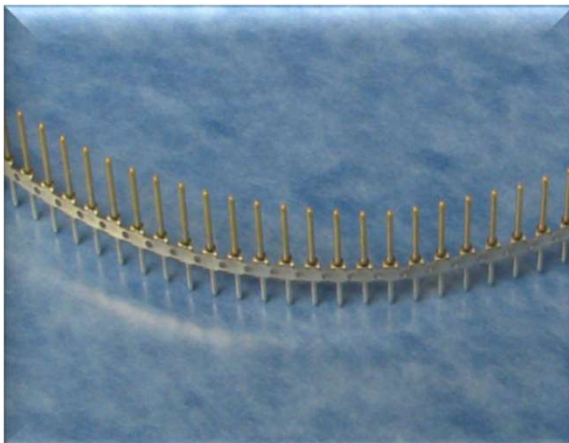
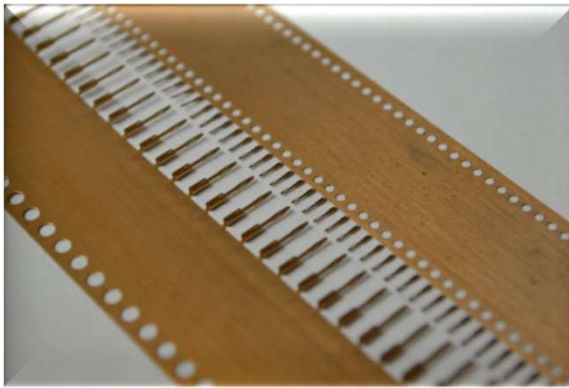
High-Speed Production with
Inline Vision Inspection System



Transmission & Safety



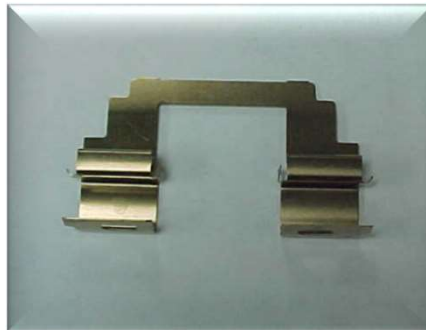
Power & Signal

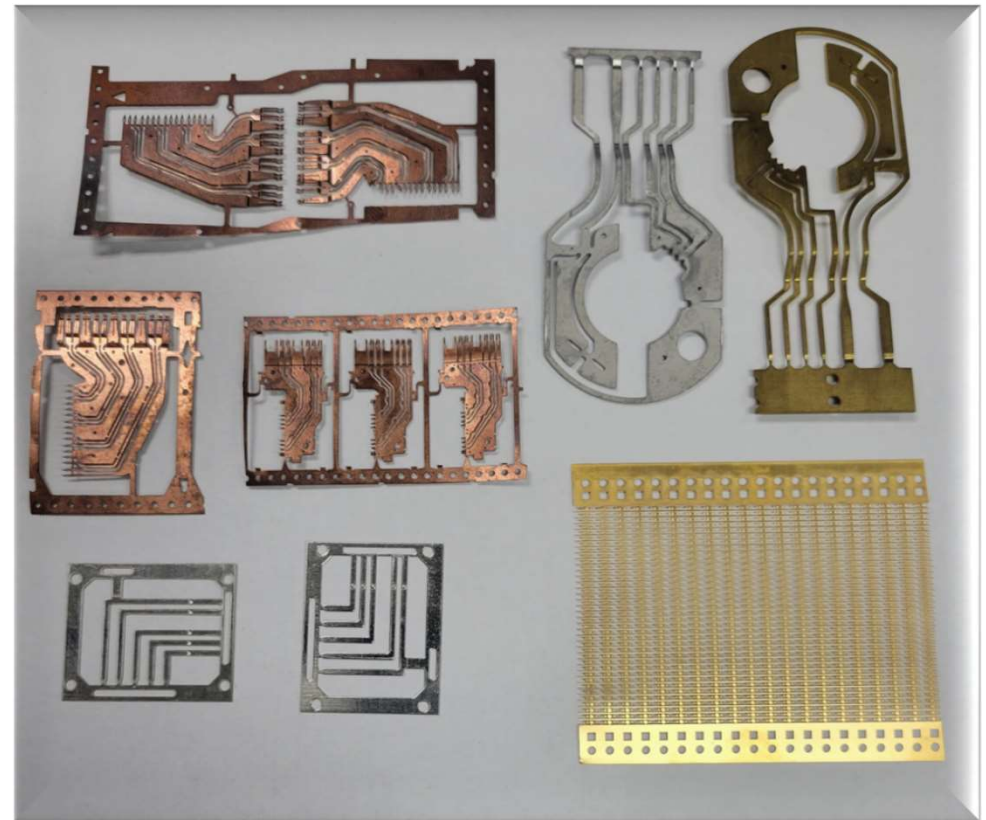


Electrical: Low Voltage Distribution & Meters

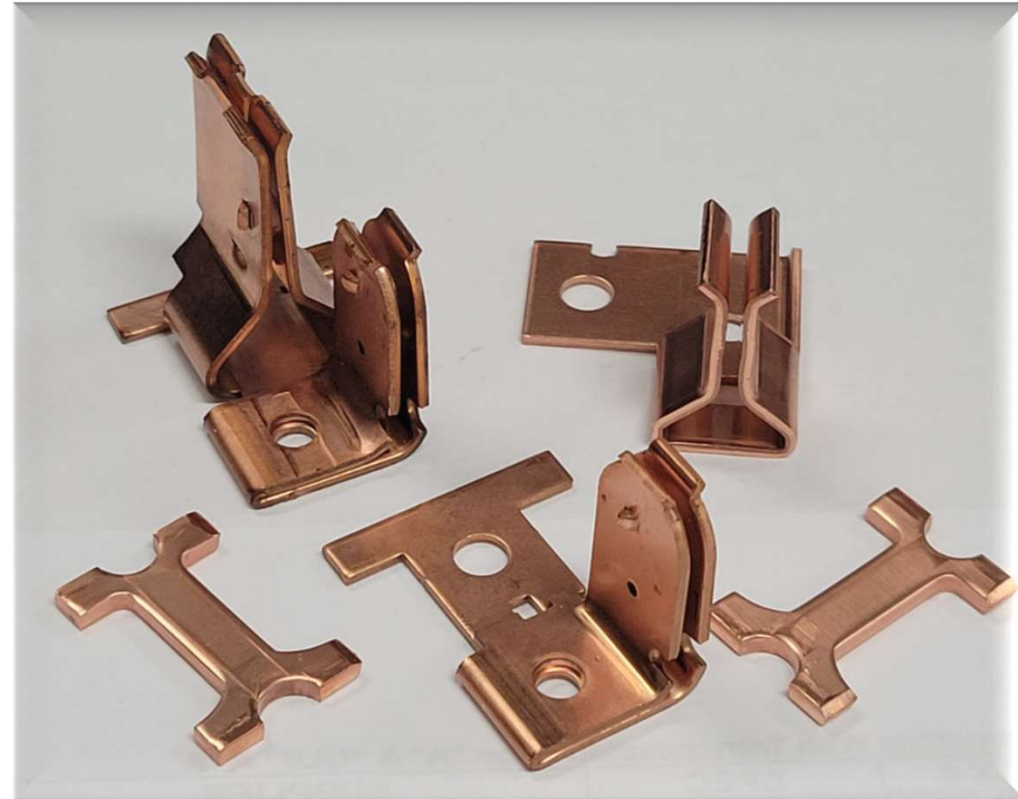


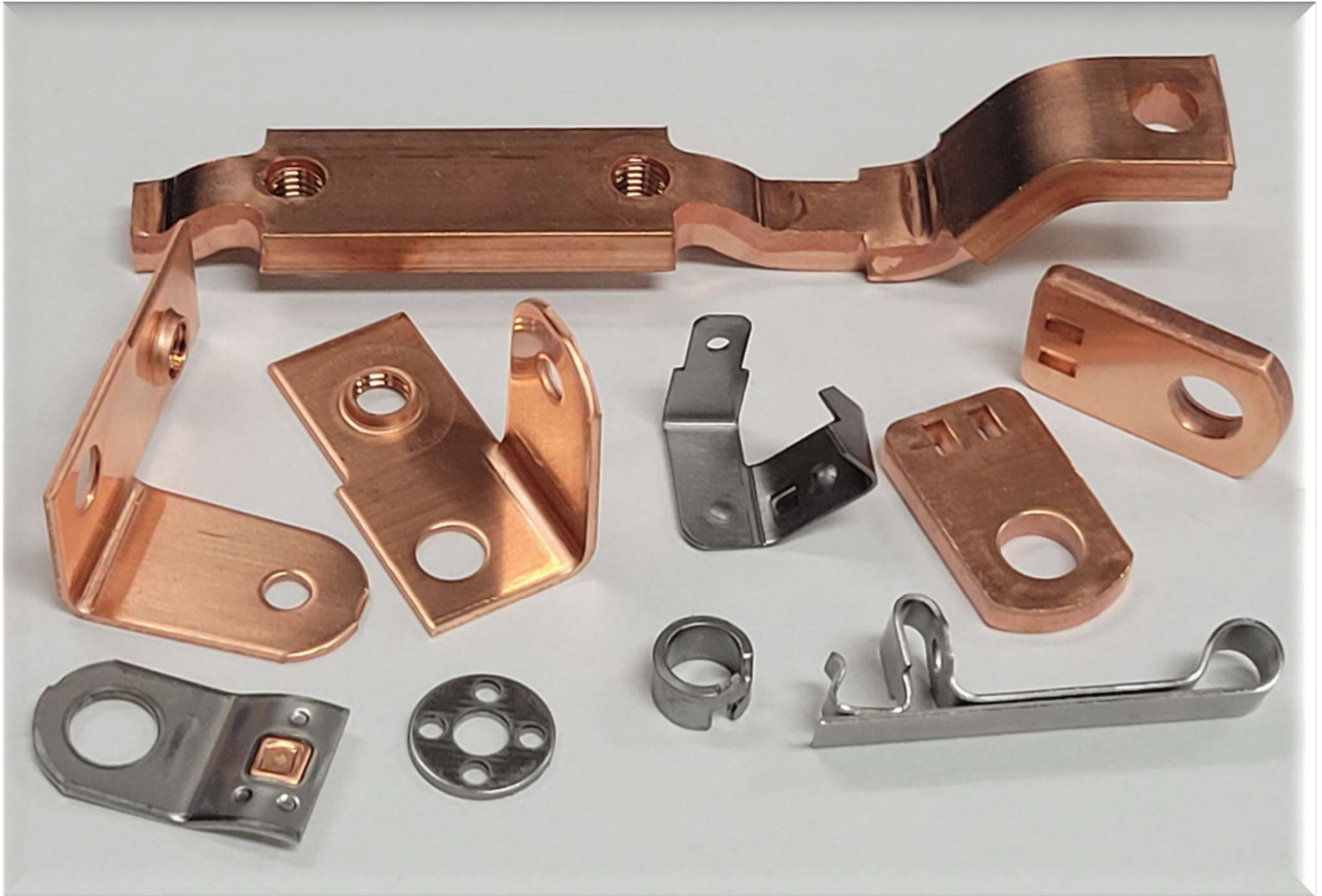
General Stampings



















Jerry Villalobos

Business Development
Manager

jervil@smallpartsinc.com

(956) 777-5294 Mobile