

WELCOME TO FISCHER



**Amatlán de los Reyes,
Veracruz México,**



About us...

Two Locations, one State of Veracruz, and the other State of Guanajuato, Fischer has a good logistics foot print to serve our customer in Mexico.

Close to international ports of Veracruz in the Atlantic and Manzanillo in the Pacific as well as to major highways connecting to US and Central America.



About us...

1997: Fischer Mexico Project begins.



1997

1999: SOP in Amatlán, Ver. (current facilities)

1999

2001: Construction of second warehouse.

2002: We achieved ISO9001 certificate.

2001-02

2004-05

2004: Started production of 200L drums.
2005: Automotive projects begins with thermostat housings injected parts

2007: Blow molding automotive Projects

2008: Engineering department starts operations.

2007-08

2009

2009: Becomes 100% Mexican owned company.

2010-13: Plant expansion (4,000 m2)

2013: First Mexican packaging company to achieve the FSSC 22000 Certificate

2010-13

2015

2015/16: Tool shop is build and begins operations.

2017: First Fully electric blow molding machine is installed

2017

2020-2022

2020: Fischer Celaya Plant starts
2022: First Expansion of Celaya Plant (2,500m2).



Our Products

Fischer S.A de C.V. specializes in plastics with two main production lines:

Blow Molding

- Jerrycans from 1 gallon up to 200L drums
- Automotive parts
- Large technical parts, up to 12 kg.



Injection Molding

- Caps and lids
- Automotive plastic parts



Packaging

Mexican market leader offering innovative technology solutions and packaging with our line of HDPE jerrycans complying with the specifications of our national and international clients.



Jerrycans with Style and Safety



The lighter and secure container



High security management in food/dangerous products



High quality plastics drums with a high molecular weight



Packaging Customers

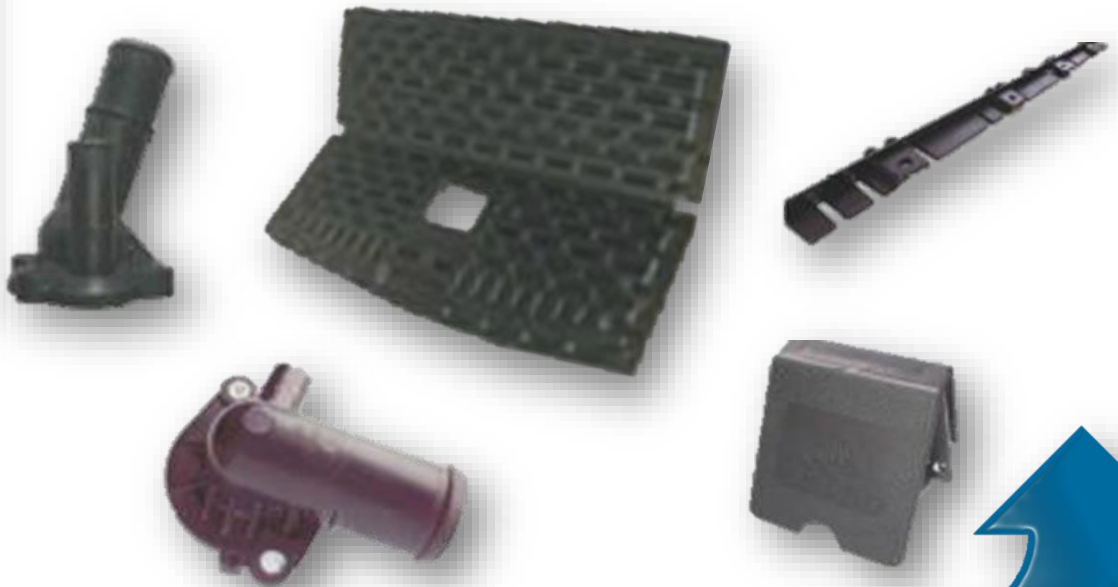
We have become strategic partners to brands that we offer the best packaging solutions for transporting their products to the final customer as another stage of their production chain.



Automotive Industry



- We are a reliable business partner of the manufacture of auto parts, capable of reach the higher standards in injection and blowing parts, all this because we have a significant investment in machinery with Edge Technology.



Automotive Parts Customers

- As TIER 2 we supply injection and blow molding parts that allows Fischer to take part in the Automotive market.

MAHLE

Driven by performance



MAZDA



FCA

AT CHRYSLER AUTOMOBILES



HONDA



Technical Parts

- ❑ Supplier of Home appliance and tooling markets.
 - Blow molding ducts and reservoirs for Mabe's refrigerators and washing machines as well as injected parts
 - Injected grips for Corona Clipper tools.

mabe



CORONA

SEASON AFTER SEASON



Capabilities

- We have strong expertize in plastic blowmolded and injection molded parts:

Capabilities



Engineering

Full CAD CAE FEA

- New product development.
- Mold design.
- Project development with a tight relation with the client.
- Adjust, Engineering changes and mold maintenance.



Blow Molding

From 40 to 120 Ton.
(220 Kg max.)
Up to 1.2m (48") long.



Injection Molding

From 60 to 450 Ton.

QA CMM PPAP



- Releases and QA Automotive process are done under the Production Part Approval Process.
- Our Automotive Projects are based in the Advanced Product Quality Planning and Control Plan (APQP).
- The releases of the production lines are done under the Production Part Approval Process (PPAP).
- Clients audits, focused in ISO/TS 16949:2002 or VDA 2.0 Management of QA in the Automotive industry.



Laboratory Testing Equipment

Fischer has made strategic investments to improve our quality control.

CMM



Thickness Gage



Melt Flow Indexer



Universal Testing Machine



Moisture Content Analysis

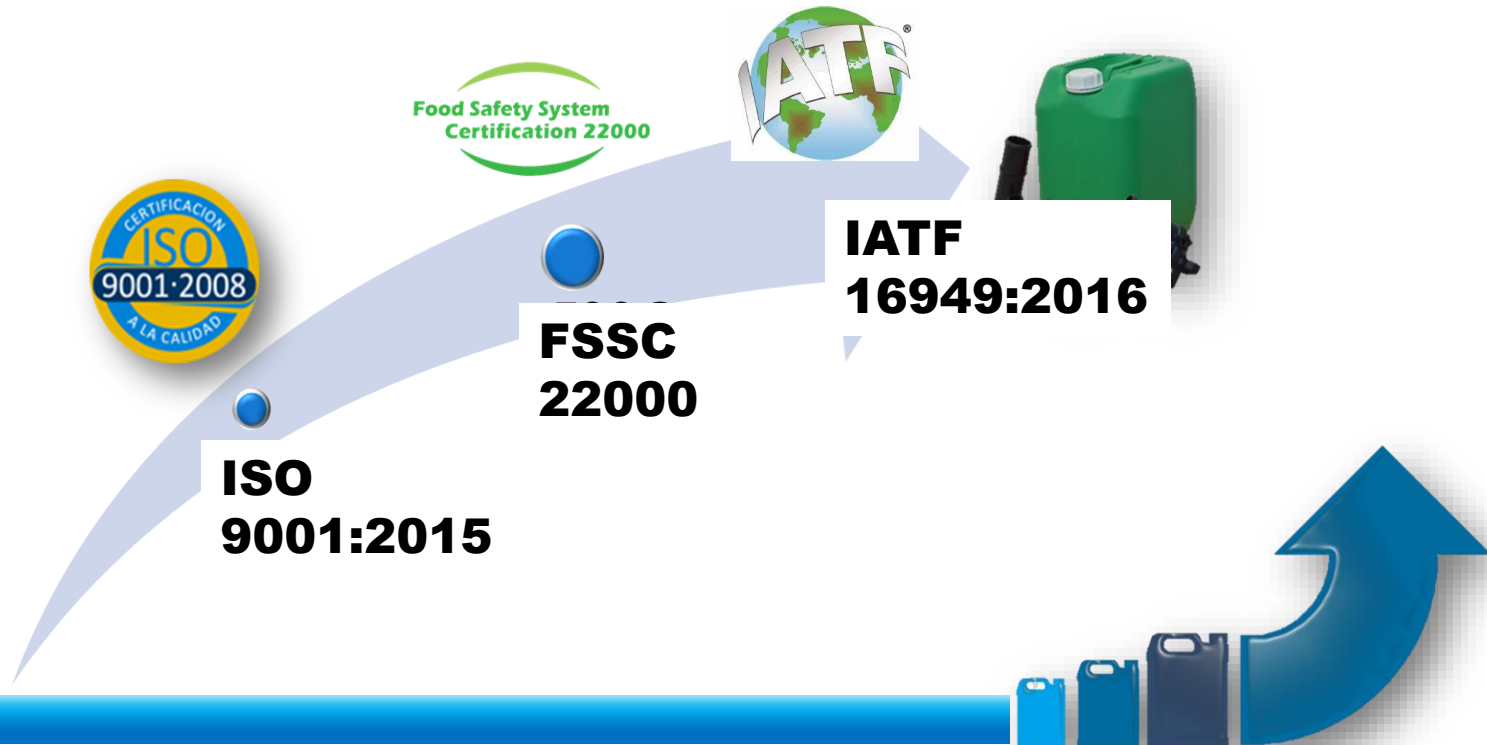


Colorimeter



Product Quality

- The basis of our competitiveness is our ability to offer our clients products that are best adapted to their needs while guaranteeing the same level of quality anywhere in the world.
- **QUALITY**, with capital letters, in all areas: in the **Product** itself (design, end user perception); in **Manufacturing** with robust processes; in **Development**, from the moment of product conception to its production and later commercialization.



Infrastructure

We are experts on **injection** and **blowmolding** process, with more than 20 years of experience in the Mexican market.



We manufacture injection parts with modern and efficient machines with clamping forces ranging from 80 to 450 tons. We handle also basic materials such as polyethylene and polypropylene to specialize as ABS, PPA and PPS.

In blowing process we have the capacity of manufacture automotive parts such as air ducts and large technical parts, and also jerrycans of 4L to 200L with modern machinery with advance technology.

Our process is efficient because we have the infrastructure needed for these activities; we have silos, conveyors, leak tester, robots, robust compressor system, cooling and water treatment system, in addition to a transport fleet for deliveries to our customers.



Our Technology

- Highest technology in Blow molding hydraulic machines, and our first Full Electric Machine is on the way and expected to start operations in the last quarter 2016.

Chillers



Compressors



Leak Detectors



Electric substation



Silos



Grinders



Our Technology

- Highest technology in injection molding hydraulic machines, equipped with robots and parameter control systems that assures a smooth process.

Chillers



Dryer



Compressors



Thermocontrol



Electric substation





Fischer Tool Shop capabilities

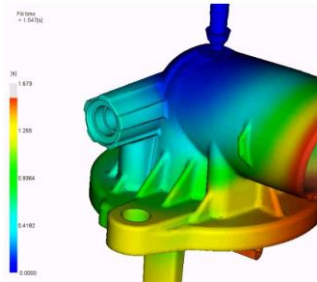
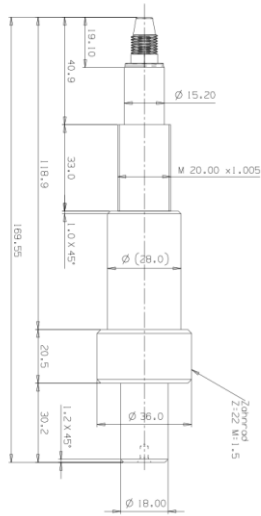
Mold maintenance, Repair, Changes

Development



CAD, CAM, CAE capabilities / processes

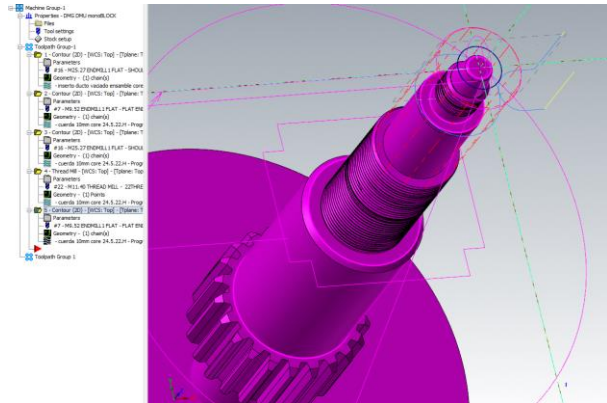
Complete data interchange thru import / export (.step, .iges, .x_t, ETC.) formats.



Mold process simulation thru our suppliers



Complete Machining of mold parts thru CAM software programming



3D prototype printing (ABS)





THANK YOU!

