



# Protev Group®



## YOUR ONE STOP SOLUTION PROVIDER

**Project work in all phases**

**Technical consulting**

**Value add to international partners**



[www.protev.de](http://www.protev.de)

## Protev Main Presentation

Elaborated by:  
Reiner Blüchel

### Project Status



INDUSTRIES



TECHNOLOGY



SERVICE



MOLD TOOL /  
AUTOMATION /  
MAINTENANCE  
FULL TAKE CARE



MOLD /  
AUTOMATION /  
MAINTENANCE  
SERVICE CENTER



MOLD /  
AUTOMATION /  
NEW BUILDINGS  
& SALES

## Worldwide Chart



### Reiner Blüchel

Worldwide CEO

US: +1 (915) 491-1429  
 reiner.bluechel@protev.de



### Liliana Amaya

Worldwide CFO

US: +1 (915) 490-3827  
 liliana.amaya@protev.de

## America

## Europe

## Asia



### Eugenio Semprini

Managing Director  
 North America

MX: +52 (656) 111-2721  
 eugenio.semprini@protev.de



### José Caballero

Managing Director  
 South America

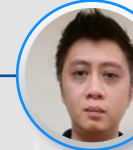
US: +1 (915) 777-5638  
 jose.caballer@protev.de



### Alexander Herrmann

Managing Director  
 Europe

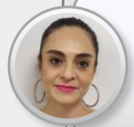
US: +1 (915) 213 9422  
 alexander.herrmann@protev.de



### Kuan WF

Managing Director  
 Asia

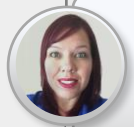
MY: +60 (12) 720-8108  
 wf.kuan@protev.de



### Sandra Quevedo

Accounting & Controlling  
 Manager US & MX

MX: +52 (656) 638-2233  
 sandra.quevedo@protev.de



### Rosa Granados

H.R. Manager MEX & USA  
 ISO 9001:2015 QS

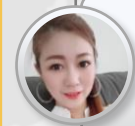
MX: +52 (656) 759-6453  
 rosa.granados@protev.de



### Marén Burger

Accounting & Admin. Mgr.  
 Europe

DE: +49 (172) 832 6405  
 break-eves-partner@protev.de



### Michelle Dai

H.R. & Admin. Manager  
 Asia

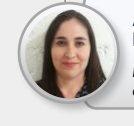
MY: +6016 720 8108  
 michelle.dai@protev.de



### Denisse Realyvazquez

Accounting Assistant

MX: +52 (656) 611-4726  
 denisse.realyvazquez@protev.de



### Araceli Moreno

H.R. Assistant

MX: +52 (656) 296-3948  
 araceli.moreno@protev.de

### Simone Porzig

H.R. Manager Europe

DE: +49 1(575) 613 6104  
 simone.porzig@protev.de



Business Unit Leader



Project Leaders



Experts



Business Unit Leader



Project Leaders



Experts



Business Unit Leader



Project Leaders



Experts



Business Unit Leader



Project Leaders



Experts



### Sergio González

IT Systems Engineer  
 Worldwide

US: +1 (915) 694-1133  
 sergio.gonzalez@protev.de



### Samuel García

Travel & Purchase Mgr.  
 Worldwide

US: +1 (915) 240-5344  
 samuel.garcia@protev.de

Worldwide side-support

## Business Units



### Locations



#### Juarez Tool Shop

+52 (656) 111-2721  
eugenio.semprini@protev.de



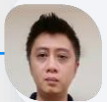
#### Guadalajara Tool Shop

+1 (915) 777-5638  
jose.caballero@protev.de



#### Monterrey Tool Shop

+1 (915) 777-5638  
jose.caballero@protev.de



#### Malaysia Office

+60 (12) 720-8108  
wf.kuan@protev.de



#### Germany Tool Shop

+49 (160) 820-5007  
stefan.stuetzer@protev.de



### Production



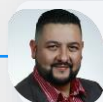
#### Injection Production

+52 (656) 214-4519  
adrian.chavez@protev.de



#### New toolbuilding Injection & Stamping

+1 (915) 593-9953  
eugenio.semprini@protev.de



#### Building Industrialization

+1 (915) 777-5638  
jose.caballero@protev.de



#### New Assembly & Automatization

+52 (656) 214-4519  
adrian.chavez@protev.de



#### Maintenance Machines

+1 (915) 777-5638  
jose.caballero@protev.de



#### Equipment Spare Parts Machine

+1 (915) 777-5638  
jose.caballero@protev.de

#### Electronic

+52 (656) 359 - 2458  
jorge.amaya@protev.de



### Special Support



#### Design Development

+52 (614) 220-2206  
geovanni.cervantes@protev.de



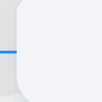
#### Headhunting & Recruiting

+1 (915) 593-9953  
eugenio.semprini@protev.de



#### Sorting & Rework

+52 (33) 3952-6320  
ricardo.madrid@protev.de



#### Transport Logistics

+52 (331) 967-8277  
fabian.covarrubias@protev.de

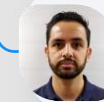


### Other Services



#### Program Manager Mercedes

+1 (915) 258-8799  
sandra.enriquez@protev.de



#### Program Manager New tooling

+52 (656) 128-9530  
efren.ruizp@protev.de



#### Information Technology

+1 (915) 694-1133  
sergio.gonzalez@protev.de



#### General Training

+52 (656) 759-6453  
rosa.granados@protev.de



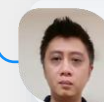
#### NAFTA Technical Consulting & Customer Take Care

+52 (656) 111-2721  
eugenio.semprini@protev.de



#### Europe Technical Consulting & Customer Take Care

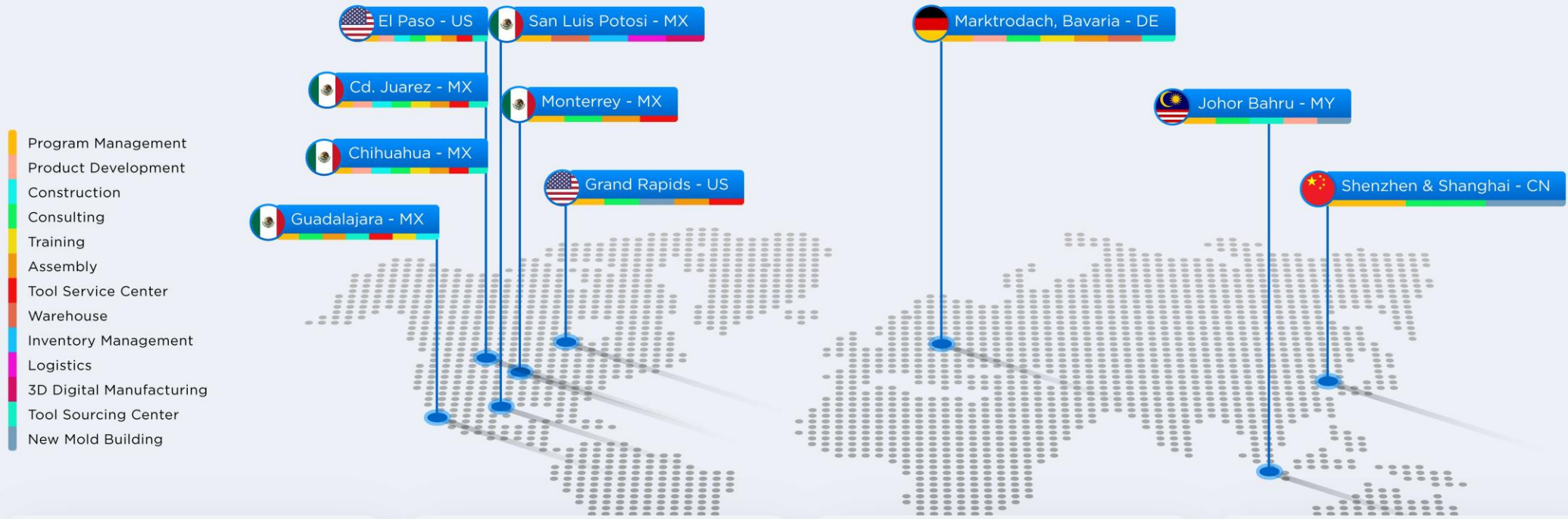
US: +1 (915) 213 9422  
alexander.herrmann@protev.de



#### Asia Technical Consulting & Customer Take Care

+60 (12) 720-8108  
wf.kuan@protev.de





 **Protev International Inc.**  
**Protev International S. de R.L. de C.V.**  
**Office & Operations**  
El Paso, TX - US  
Cd. Juarez, Chihuahua - MX  
PM, Product Development, Construction, Consulting, Training, Assembly, Tool Service Center, Tool Sourcing Center

 **Protev International Inc.**  
**Krieger Craftmen Inc.**  
**Office & Operations**  
Grand Rapids, Michigan - US  
PM, Consulting, New Mold Building, High Level Automatization, Assembly Lines, Tools Service Center

 **Protev International Inc. Monterrey**  
**Office & Operations**  
Monterrey, N.L. - MX  
PM, Consulting, Assembly, Tool Service Center

 **Protev Tooling Mexico S. de R.L. de C.V.**  
**Office & Operations**  
Guadalajara, Jalisco - MX  
PM, Consulting, Assembly, Tool Service Center, Training, Construction

 **Protev MX San Luis Potosi**  
**Office & Warehouse**  
San Luis Potosí - MX  
PM, Warehouse, Inventory Management, Logistics, 3D Digital Manufacturing

 **Protev International GmbH**  
**Office & Operations**  
Marktrodach, Bavaria - DE  
PM, Product Development, Consulting, Training, Assembly, Tool Service Center, Warehouse

 **Protev China Shenzhen & Shanghai**  
**Office**  
Shenzhen & Shanghai - CN  
PM, Consulting, New Mold Building

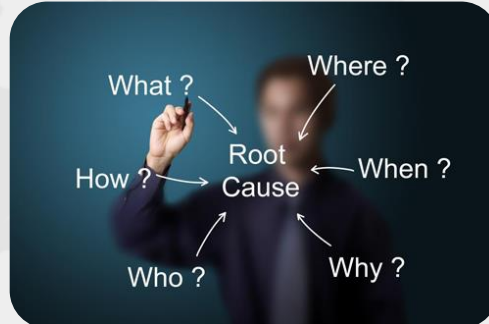
 **Protev International Sdn. Bhd.**  
**Office & Operations**  
Johor Bahru - MY  
PM, Consulting, Tool Sourcing & Fabrication Center, Product Development, New Mold Building

Taskforce consulting

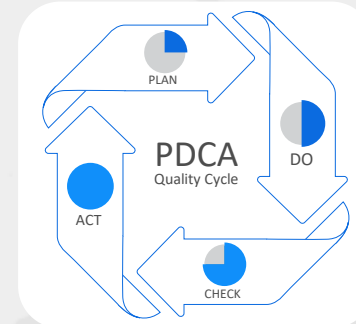
## 4 Pillar of "Supplier take care":



1. Troubleshooting



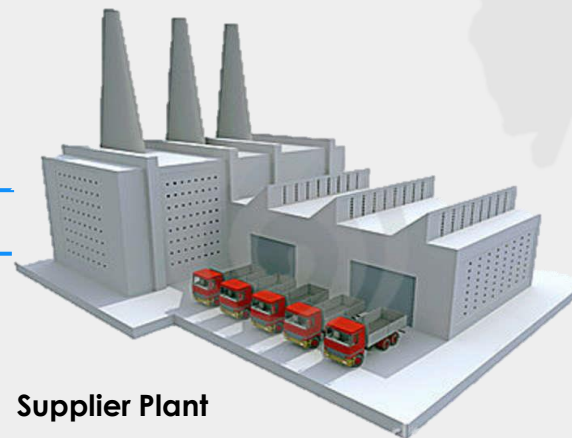
2. Analyzing



3. Problem elimination



4. Prevention Long term

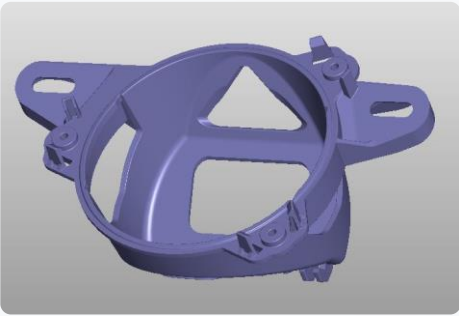


Supplier Plant

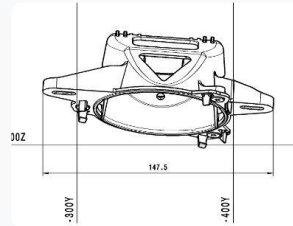
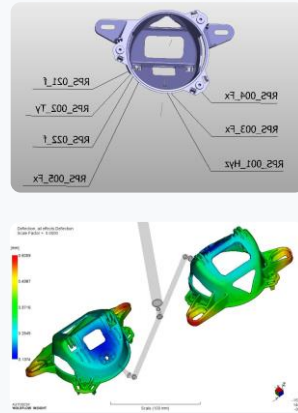
## Design Development

Until finished  
Product

PRE-DESIGN &  
RFQ DATA STATUS



3D CUSTOMER RELEASE, FEASIBILITY  
& DATA STATUS + 2D APPLICATION



RELEASE NOTE 1 - SUPPLIER



- We develop, modify and design plastic parts and assembly for the automotive sector as well as other industrial applications.
- Our results are well thought out and denote best practices.

- Depending on the task, our developers may collaborate in part or take over completely.
- We match or exceed specifications when designing plastic parts and complete products (e.g. weight reduction, optical or technical upgrading). Mold flow, Mold cool & Mold wrap

- We pride ourselves on delivering fully manufacturable designs, optimized for injection molding.

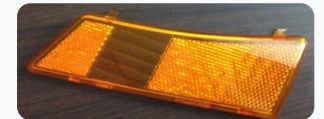




Experience in  
each sector

## Injection Production

### Automotive Components



### Home Appliance / Others Components



### Precise Components



**Adrian Chavez**  
+52 (656) 21414519  
[adrian.chavez@protev.de](mailto:adrian.chavez@protev.de)



**Maurizio Geli**  
+1 (915) 240-2432  
[maurizio.geli.partner@protev.de](mailto:maurizio.geli.partner@protev.de)

## Worldwide Support

# Maintenance / Repairing / Modification

## Tooling cares Maintenance/Repairing/Modification in our Tool Shops or on side with you

### Maintenance / Repair

Repair of injection hot-runners caused by leakage.  
 Complete injection molding tool maintenance with corresponding documentation.  
 Maintenance and restoration of electrical, hydraulic, and pneumatic systems.

### Polishing

Polishing of surfaces in new mold, recovery of damaged surfaces (high gloss areas).  
 Contaminated surfaces repair (corrosion, scratches, gas-fog etc.).  
 Fix de-molding problems caused by material stuck or over-packed.

### Laser Welding

Laser welding (on request) for a faster and more precise repair.

### Texturing

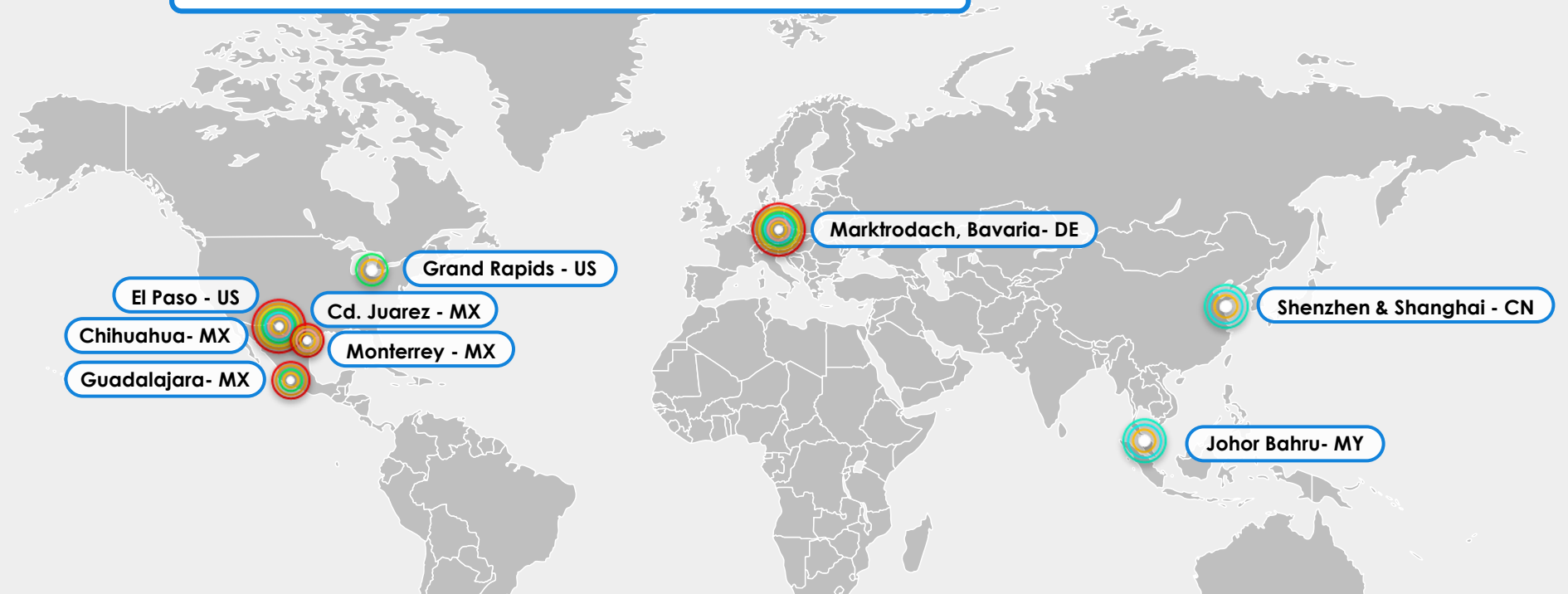
VDI surfaces repair by radiation (granules, beads, etc.).  
 VDI texturizing and graining are carried out by our partners.





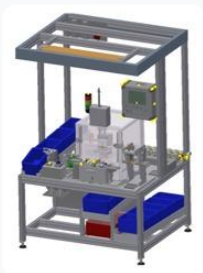
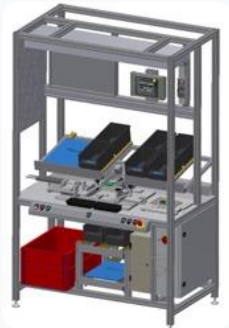
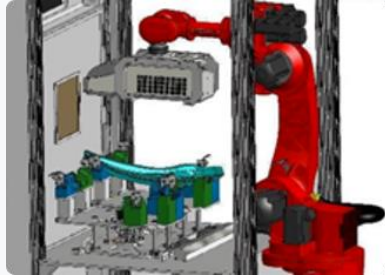
## New Tool Building

Tool Sales / Prototyping / Tool Building / Take Care



## Automation

From Assembly  
lines to Robot cells



With Partners in America / Europe / Asia  
Up to 750K USD complete Assembly Lines and 5 Mio  
at the same time Worldwide

Special machine

Item manufacturing

Construction – design work

Gripper / Handling for Ing. molds

Layout design / concept

Assistance with assembly systems

Optimization / implementation

Robot Cell constructions

Experience in  
each sector

## Design and manufacture of electrical testers

### ICT fixtures

- Checksum
- 3030
- I3070 Keysight
- Theradyne
- End of line testers (EOL)
- Flash programming stations
- Functional testers

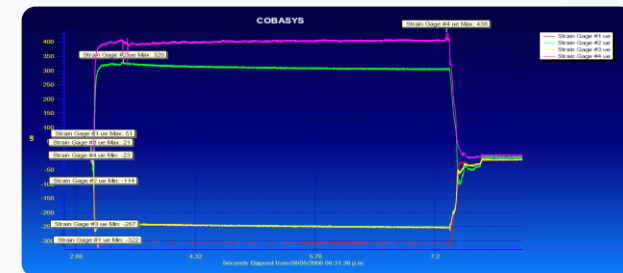
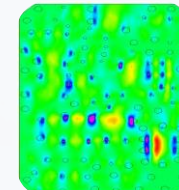
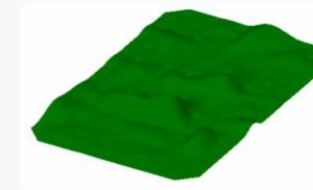
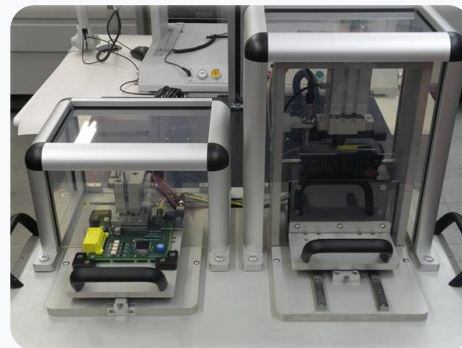
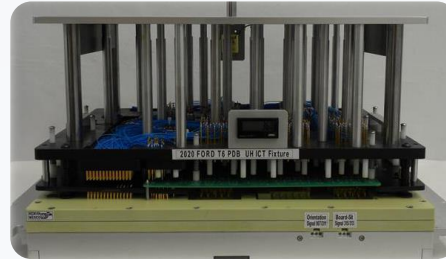
### Test application development

- Development & Debug of Test Application
- Design & Manufacturing of Test Fixture
- Installation & Support On-Site

### FEA Analysis and Fixtures

- Stress heatmap simulation
- Physical strain measurement

## Electronic



KEYSIGHT  
TECHNOLOGIES

Visual Basic

OMRON

ATEQ

FESTO

Allen-Bradley

COGNEX

CHECKSUM

SPEA

LabVIEW

Pro-face  
for the best interface

TERADYNE

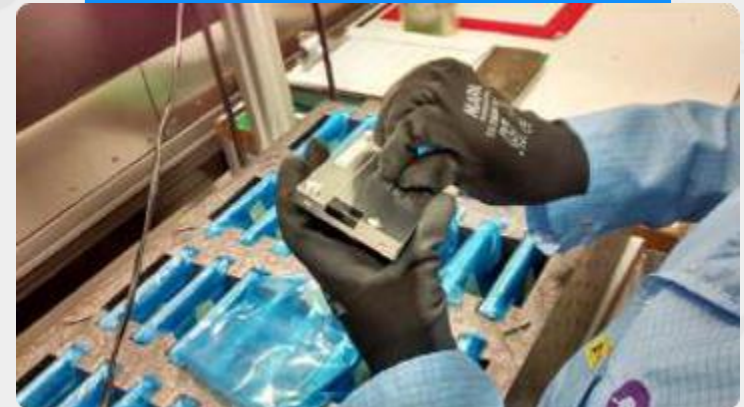
KEYENCE

SMC



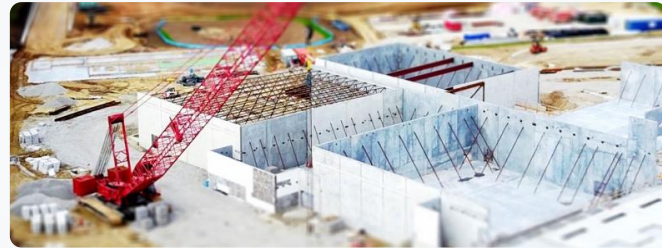
## Sorting, Reworking, Certifying Components and Finish Goods

- Sort, Rework and Material order/control
- Certification. In Line/ End of Product
- Certification
- Finish Goods Product Certification
- CSL I & II (Control Shipping Level)
- Final Product Certification also Inside Customer
- Production Plant
- Assembly and Sub-Assembly Services



## Customer development worldwide

- **Find Partner or your own right place in the world**
- From greenfield to complete plant development
- HR support from interview to hire
- Complete Industrialization plant and machine's
- Government take care





## Protev Academy Worldwide

Properly trained people  
are the base to success

We provide suitable training for you and your team in the following areas:

Injection Molding process

Machine / Periphery

Troubleshooting

Inj. Molding Technology

Kaizen

Quality "QRQC"

Workshops

Train the trainer

Mold Technology

PDCA

5S

Leadership

Teambuilding

Material knowledge

Management

**You've got questions?**

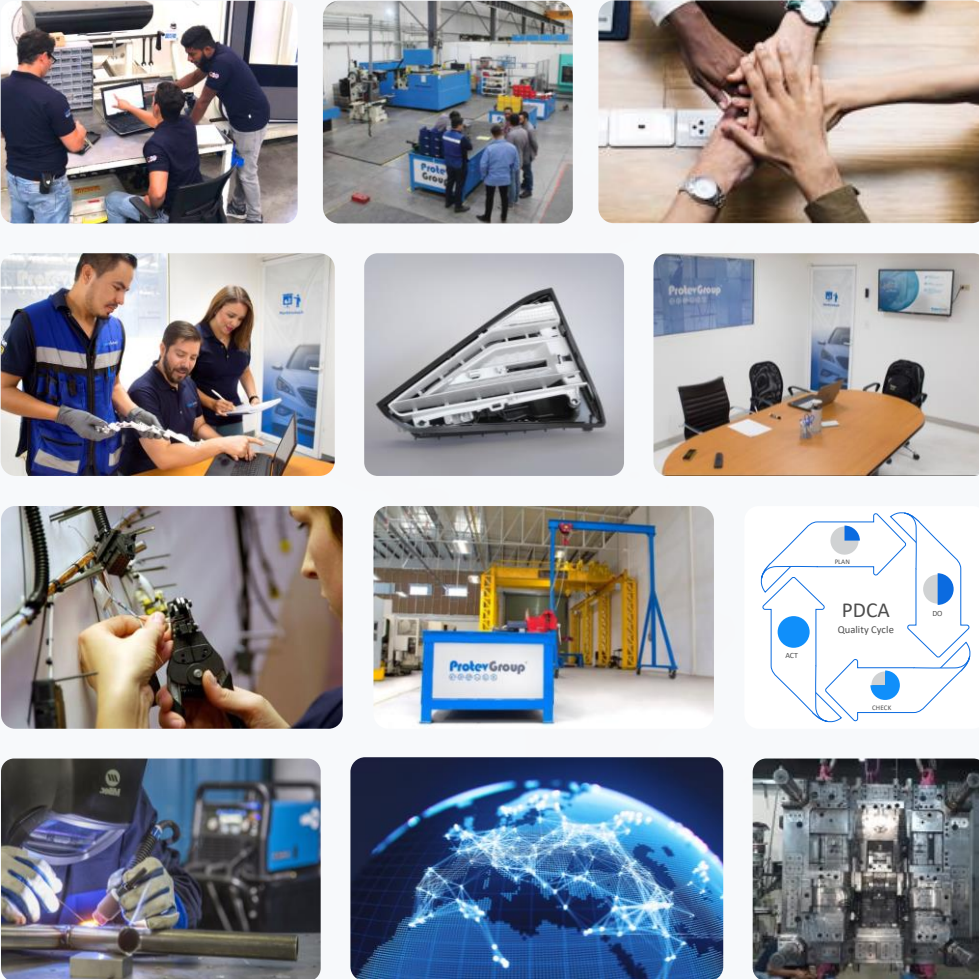


**We've got answers!**



## Why Protev?

Multiple needs:  
One partner



- Over 40 years of professional expertise in the automotive and other industries
- Cooperation to the level that the customer desires - from consultation to complete project takeover
- Fully autonomous teams are available 24/7
- Highly flexible, entrepreneurial employees
- Availability of highly qualified experts or teams -depending on customer needs
- Our experts speak the language of the customer (multi - language available)
- No holidays, no sick days, no overtime, no absences: Only productivity
- Only one Partner but more than 20 Partner companies worldwide behind

## Some of Our Clients




A trusted name for trusted brands.


Expertise forged by years of experience and collaboration, as well as many successfully completed projects with our clients.


## Protev Organization


### Contact Sheet


#### Purchase Order Region

 **Protev International GmbH**  
 Fischbacher Str.7, 96364 Marktrodach - DE

 **Protev International Inc.**  
 6090 Surety Drive Suit 110-D, 79905 El Paso, TX - US

 **Protev International S. de R.L. de C.V.**  
 Ave. Rio Bravo 1499 Parque Industrial Rio Bravo  
 C.P. 32557, Cd. Juarez, Chih. - MX

 **Protev Tooling Mexico S. de R.L. de C.V.**  
 IMI 2 Parque Industrial El Salto, Calle A 239 B,  
 El Salto C.P. 45680 Jalisco - MX

 **Protev International Sdn. Bhd.**  
 Austin 18 Versatile Business Suites  
 Unit 18-11, Jalan Austin Perdana 3, Taman Austin Perdana, 81100  
 Johor Bahru, Johor- MY



**Reiner Blüchel**  
 Worldwide CEO

US: +1 (915) 491-1429  
 GE: +49 (175) 677 – 6346  
 reiner.bluechel@protev.de



[www.protev.de](http://www.protev.de)



**Eugenio Semprini**

North America Managing  
 Director  
 MX: +52 (656) 111-2721  
 eugenio.semprini@protev.de



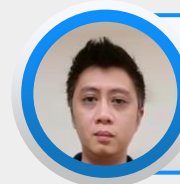
**José Caballero**

South America Managing  
 Director  
 US: +1 (915) 777-5638  
 jose.caballer@protev.de



**Alexander Herrmann**

Europe Managing Director  
 GER: +49 151 6286 5695  
 alexander.herrmann@protev.de



**Kuan WF**

Asia Managing Director  
 MY: +60 (12) 720-8108  
 wf.kuan@protev.de