



DASH
INDUSTRIAL DE MÉXICO



About us

We are a 100% Mexican company focused on the Extrusion of Industrial Aluminum Profiles and metal stamping, meeting the highest quality standards that are required today.

We can serve the Automotive and Transportation, Electrical and Electronic, Automation, Petrochemical, Energy, Aeronautical and Industrial Industries in general.



Production capacity

3,000
TONS
— BY YEAR —





INSTALLATIONS

54,000 ft²

WITH LATEST
GENERATION
MACHINERY

And two semi-automated lines for the production of industrial profiles that allow us to always offer the best quality in our products and services.

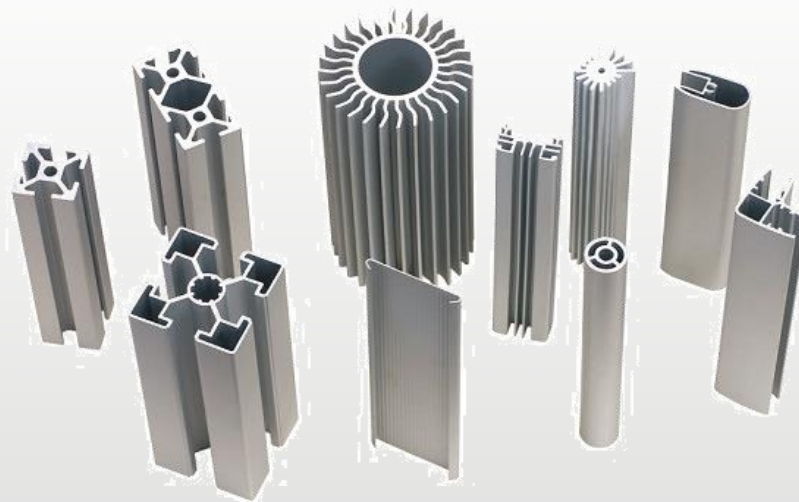


2 EXTRUSION PRESSES

WUXI QIANZHOU

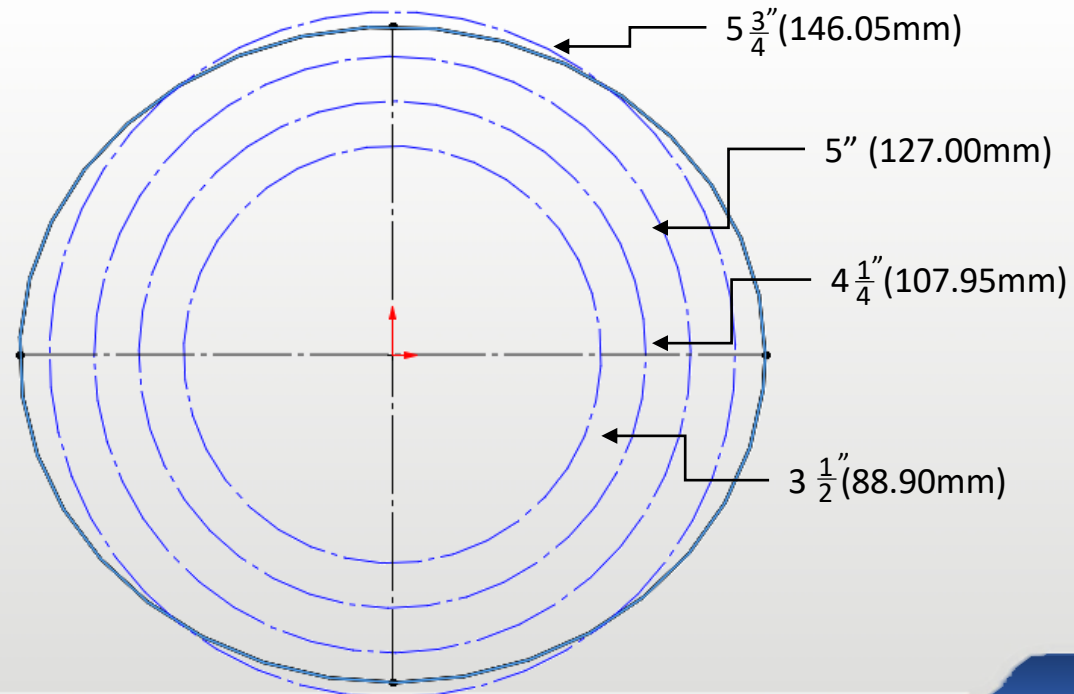
660 U.S. TONS

OUTLET 6.5 "

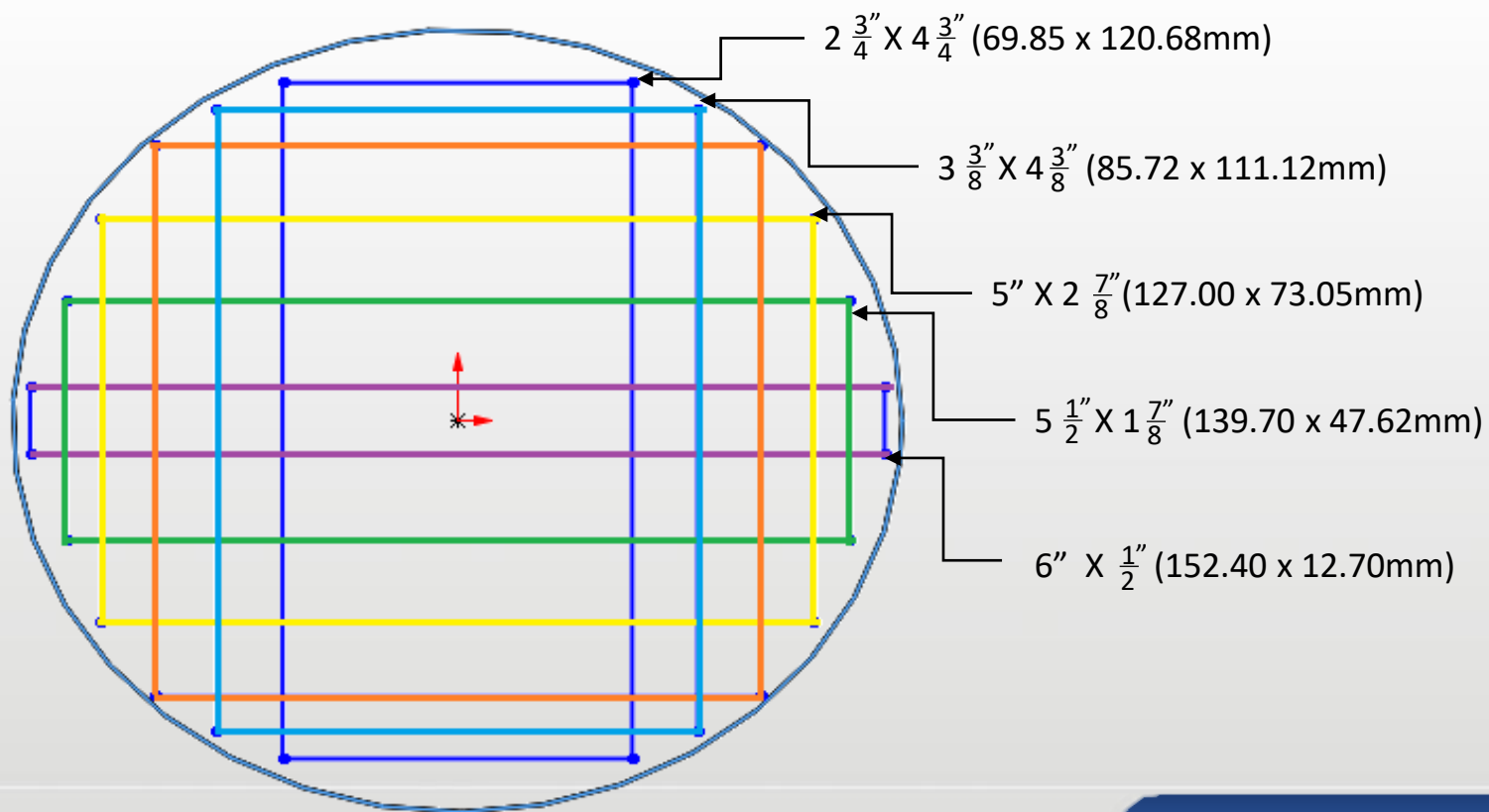




Circumscribed outlet diameters



Profile area dimensions





Cooling tables

70 FEET AUTOMATIC AIR-AIR SYSTEM

It allows us to offer the highest quality standards to obtain the best solutions for industrial profiles.



Alloys

6005 • 6060 • 6061 • 6063

Typical applications

Construction, automotive and transportation industry, petrochemical industry, renewable energies, transportation in general, heavy structures and structures with good surface finish, doors, windows, walls, stairs, fences, dissipators, etc.



Temple

T4 • T5 • T6

2
AGE OVENS

AUTOMATIC

AIR-HEAT SYSTEM

Hardness according to product
engineering specification



Remelted process

CAPACITY

Holding: 1,100 lb.
Melting: 440 lb./h



MISSION

Enrich the supply chain through high quality aluminum products.



VISION

To be the preferred supplier of our clients, providing highly reliable material for its service and quality.



VALUES

ACHIEVEMENT: We are passionate about concrete results

COMMITMENT: We follow our guidelines to meet the objectives, accompanied by constant work.

RELIABILITY: We trust people, in what they say, in what they do and in their commitment to the organization

QUALITY: We carry out our work with excellence

CHANGE: We proactively face challenges, adapt and take advantage of the opportunities in the environment

STRATEGIC ALLIANCES: We create synergies inside and outside the company

SOCIAL RESPONSABILITY: We assume our responsibility to society and the environment



Commitment

- Guarantee products of the highest quality.
- Excellent personalized service.
- Manufacture of special measures with a high degree of difficulty.
- Technical Advice.



Norms

- NMX-CC-9001-IMNC-2008
- EN 755-9:2008
- EN 12020-2:2008
- NMX-W-039-SCFI-2013
- Aluminum standards and data 2009, Section 6-1 y 6-2.
- Registration record of international alloy designations and chemical composition limits for wrought aluminum and wrought aluminum alloys; Edition 1993.
- International alloy designations and chemical composition limits for wrought aluminum and wrought aluminum alloys. Edition 2002.
- ASTM B 221
- Military Standard MIL-STD-105 D; UNE 66020.
- Norma ISO 9001:2008



Petrochemistry

Industry



Petrochemistry

Industry





Heliports and Automotive

Construction





Monumental

Construction

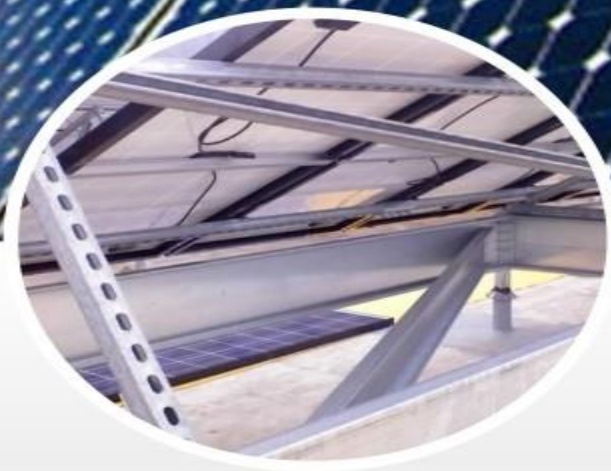




Energetic
Industry



Energetic
Industry



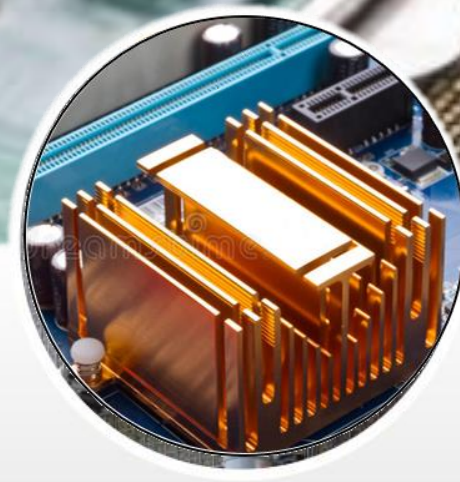
Electrical

Industry



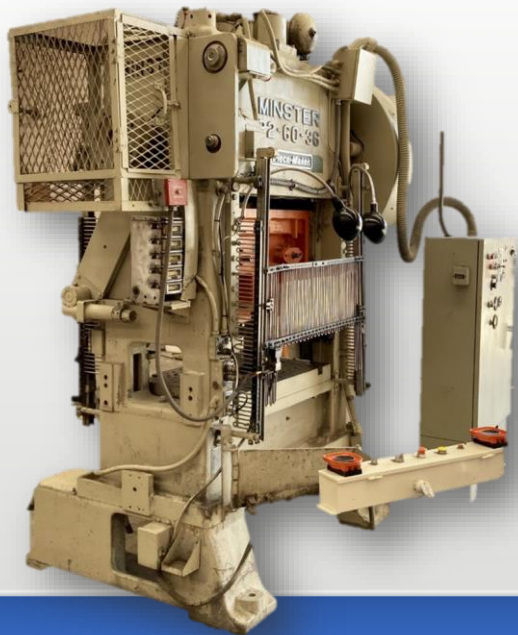


electronics
Industry

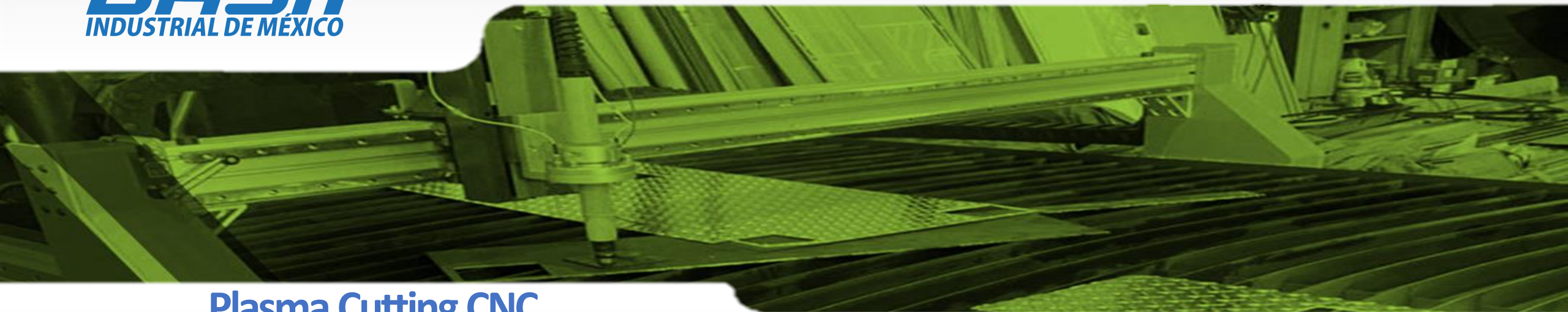




Metal stamping machines



- P2-60-36 minster
- S2-100-48-30 minster
- EM2-150-48x30 L&J



Plasma Cutting CNC Cyrious Lite 5x10



- cutting table size 62 "x 122"
- Speed Guide 25mm Linear Rails
- High speed DTHC5 torch height control with isolated remote sensor module

Our main customers

DALKORPAK

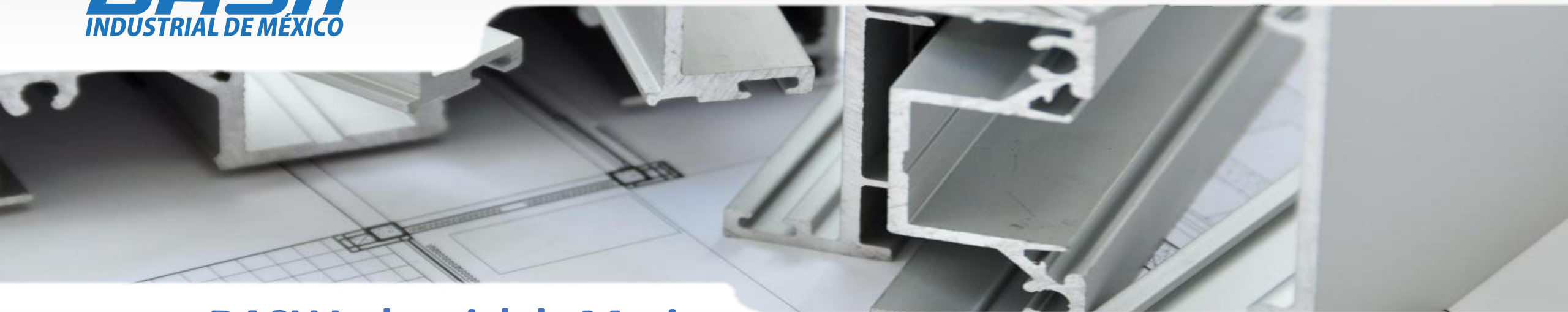


AINCO



FirstTexasProducts

BOYD



DASH Industrial de Mexico



Plant

Address: El Terrero 9612

Colonia Toribio Ortega, 32676

Cd. Juárez Chih. Mx

Telephone: +52 (656) 899-3440

Email: jesus.ponce@dash-industrial.com

THANK YOU