

BJAutomotive GmbH

Founded in Germany, BJ Automotive (BJA) has been producing the highest quality components for the world's top automotive brands since 1971.

东莞百骏成立于德国,自1971年以来一直为世界顶级汽车品牌生产高质量的汽车零部件。

Since joining Defond Group in 2006, BJA has been combining innovative design capability with Defond's 40+ years reliable and cost-effective manufacturing experience to help customers in adapting to the fast-changing markets and technologies. With regional offices, technical teams and local representatives throughout Asian and European countries, BJA provides customers with timely, all-round professional services free of language barrier.

自2006年加入德丰以来,百骏结合自身高端的设计能力和德丰40载可靠及高效益的生产经验,利用高度创新的技术协助客户驾驭现今科技迅速发展的时代。百骏在亚洲及欧洲设有办事处和技术团队,为客户提供适时及全面的专业服务。

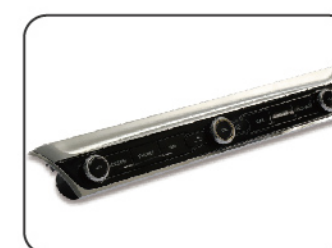
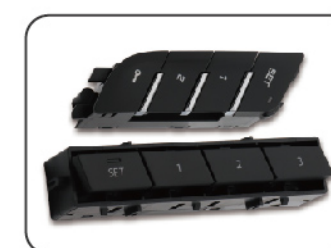
Our Prestigious Customers



- Product Design and Quick Prototyping
产品设计及快速成型
- Software and Firmware Development
软件及硬件开发
- Automated Manufacturing and Industry 4.0
自动化生产及工业4.0
- In-house Testing (3D AOI, X-Ray, Salt Spray, Thermal Shock)
产品测试 (3D光学扫描, X射线, 盐雾测试, 温度测试)
- Third Party Accredited Laboratories 第三方认证及联合实验室:
CNAS, CQC-A Class Enterprise, UL CTPD / CTF3, Intertek RTL, Automotive SPICE®
- Quality Management 质量管理:
IATF 16949, ISO 9001, ISO 17025, ISO 14001, ISO 13485
- Compliances: RoHS, REACH
认证

*The trademarks on this page are sourced from Internet, copyright is owned by the respective companies.
*本页所有商标来源于网络, 商标权归各汽车品牌所有。

40+ Years of High Quality Manufacturing Experience 年优质产品制造经验



BJA's dedicated R&D and manufacturing facilities in Germany and China, global supply chain and sourcing capabilities help customers to turn innovative design concept into mass produced products with superior quality and competitiveness:

BJA在德国和中国设有专门的研发团队、制造工厂、环球供应链及采购团队,帮助客户将创新的设计理念转化为具有卓越质量和竞争力的产品:

- Multi-function Seat Switches
多功能座椅开关
- Door and Window Switches
门窗开关
- LIN CAN Console Switches
中控台
- Steering Wheel Switches
方向盘开关
- Touch-sensing Switches
触摸感应开关
- LIN & RGB Ambient Lighting
LIN & RGB 氛围灯

Global Presence



- **Hong Kong (Headquarter) 香港总部**
5/F, Chai Wan Industrial Centre, 20 Lee Chung Street, Chai Wan, Hong Kong
地址: 香港柴湾利众街20号柴湾中心工业大厦5楼
Tel(电话): (852) 28975603
- **Dongguan 东莞工厂**
45 Hongmei Commercial Street, Hongmei Town, Dongguan City, Guangdong Province, PRC
地址: 广东省东莞市洪梅镇洪梅商业街45号
Tel(电话): (86) 769-86227100
- **R&D Center 研发中心**
9/F, A1, Guangda We Valley, Songshan Lake, Dongguan City, Guangdong Province, PRC
地址: 广东省东莞市松山湖光大We谷A1栋9楼
Tel(电话): (86) 769-84396918
- **Shanghai Office 上海办事处**
Room 923, 9th Floor, Building A, No. 1156 South Shenbin Road, Minhang District, Shanghai, PRC
地址: 上海市闵行区申滨南路1156号A栋9层923室
- **Germany 德国办事处**
Industriestraße 27, 74912 Kirchart, Germany

Contact 联络

(86) 769-88437208
auto@defondetech.com
www.defondetech.com



R&D Capability

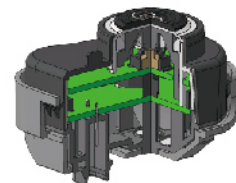
CAD

Mechanical Design
机械设计

- CATIA / ProE etc.

Electronic Design
电子设计

- Circuit / PCB Design etc.



Embedded System Engineering

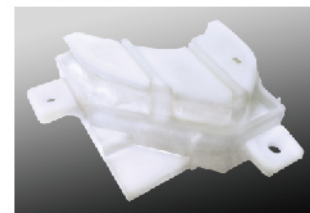
Software Development
软件开发

- Automotive SPICE
- LIN / CAN Development
- Embedded Software Workbench

Prototyping

Fast Prototype
快速手板

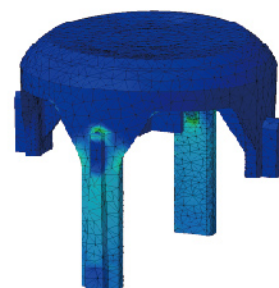
- 3D Printing
3D打印
- Sampling
样品制作



CAE

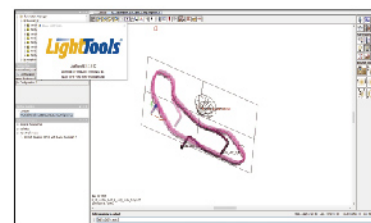
Structure Analysis
结构分析

- Finite Element Analysis
有限元分析



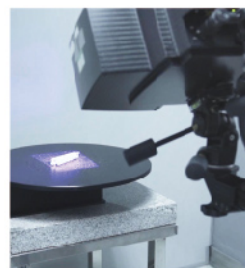
Optical Simulation
光学模拟

- Luminance
亮度
- Homogeneity
均匀度
- Leakage / Cross-Talk
漏光 / 串光



Validation Laboratory

- 3D Scanning
3D 扫描
- Force-travel Measurement
力行程测量
- Light Illumination Measurement
光照度测量
- Light Spectrum Measurement
光谱测量
- Reliability / Durability Test
可靠性 / 耐久性测试
- Environmental Test
环境测试



Your One-stop Solution From Design to Manufacturing
从设计至生产一体化的整体解决方案

Manufacturing 生产实力

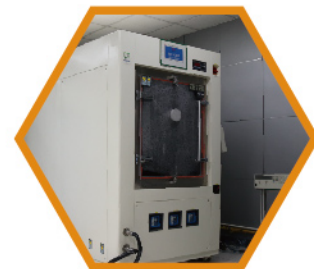
- Industry 4.0
工业4.0
- Digital Manufacturing Automated Plant
自动化数字工厂
- 6 Sigma and Lean Manufacturing Management
六西格玛和精益生产管理
- Data Visualization
数据可视化

R&D 研发能力

- National Hi-tech Enterprise
国家高新技术企业
- Intelligent Human Machine Interface Solution
智能人机界面解决方案
- IoT Connectivity Solution
物联网解决方案
- Product Design and Quick Prototyping
产品设计及快速成型
- Software and Firmware Development
软件和固件开发
- Design for Manufacture and Assembly
面向制造与装配的设计

Quality Management 质量管理

- Third Party Accredited Laboratories
第三方认证及联合实验室
 - CQC-A Class Enterprise
 - UL CTPD / CTF3
 - Interte RTL
 - CNAS
- IATF 16949
- Customer Accredited Laboratory
客户认可实验室
 - Saic Volkswagen 上海大众
 - Audi 奥迪



BJA Automotive GmbH