

MAQ-REY S.A. DE C.V



9001:2015



Address : Revolución 530 Col. Burócratas del Estado, Monterrey N.L. México C.P. 64380



Tel. (52 81) 83717550 /8116362385

**Please feel free to contact us, WE
SPEAK ENGLISH**



Contact : Miguel A. Gutiérrez



Email: ventas@maq-rey.com

We are a Machining company focused on the manufacture of industrial components in large production runs. With more than 30 years of experience, we have been developing our capabilities according to our customer's requirements.

PROFESSIONAL BACKGROUND:

1988	Maq-Rey started up operations with conventional equipment.	➤
1996	Maq-Rey started developing automatic process	➤
1998	Maq-Rey moved to our current building.	➤
2001	Maq-Rey started to be focused on medium and large production.	➤
2009	Maq-Rey is certified according ISO 9001: 2008	➤
2012	Maq-Rey starts to export directly to U.S.A. and to develop strategical relationship with important distributors of raw materials in U.S.A.	➤
2014	Acquisition of our first CNC swiss CINCOM citizen	➤
2015	Acquisition of our second CNC swiss CINCOM citizen	➤
2020	Acquisition of our third CNC swiss CINCOM citizen	➤
		➤

2021 Certified ISO 9001:2015



**American Registrar
of Management Systems ®**



ema
ORGANISMO DE CERTIFICACIÓN
ACREDITADO 65/09

Certifica que el Sistema de Gestión de la Calidad establecido en:

MAQ-REY S.A. DE C.V.

Revolución 530, Col. Burócratas del Estado, Monterrey, Nuevo León, C.P. 64380, México.

Cumple con:

NMX-CC-9001-IMNC-2015

ISO 9001:2015

El alcance de esta certificación incluye los procesos:

Proceso de maquinados de precisión de piezas metálicas para la industria en general en los siguientes materiales: acero, aluminio, bronce, cobre, durabar, modular, nylamid, acetal y teflón.



Fecha de emisión:

08/Jun/2021

Registro: MRE210608.QMS

Fecha de expiración:

14/Abr/2024

Fecha de primera emisión 11/Nov/2009



MAQ-REY

Main production area



First area Ship 1
10000ft²

MAQ-REY

Second production area



Second area Ship 2
5000ft²

MAQ-REY

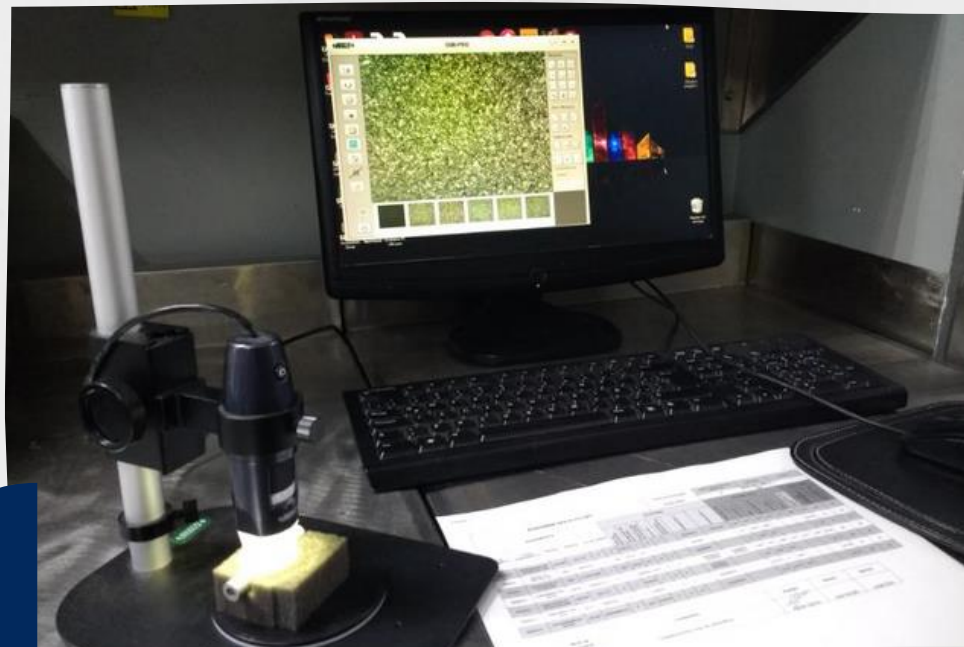
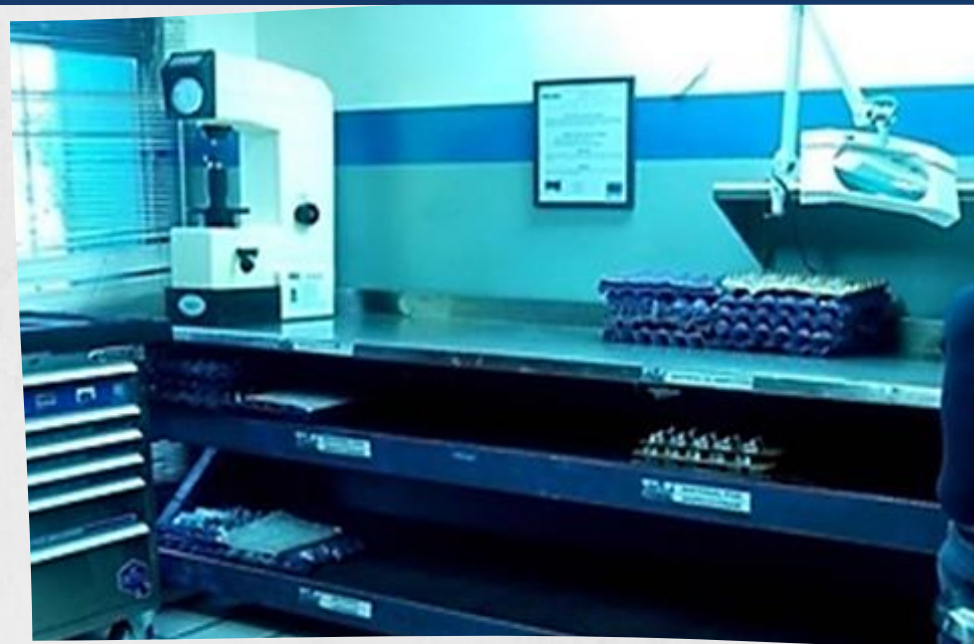
Raw material warehouse



Third area Ship 3
2680ft²

MAQ-REY

Laboratory



Quality control room: 165 ft²

MAQ-REY

Maq-Rey around the world



- Automotive/ Air conditioning
- Oil sector ("0 defects")
- Compressors
- Industrial products
- Medical industry



- Digital optical compar
- Digital Height Gauge
- Marbel (table) rectificated 16" x 32"
- Hardness tester
- Borematic (Check until 9.000" for inside diameter)
- Engraving machine (traceability)
- Gauge makers, specialized on: ACME Threads and Oil Threads
- CMM



Complementary strategic process:

- Welding
- Coating applications as tungsten carbide.

Surfaces finishes as:

- Zinc electroless
- Zinc plate
- Phosphatized
- Black Oxide
- Anodized
- Galvanized
- Casting



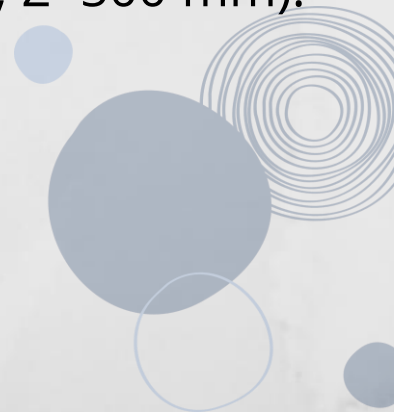
Domestic and Foreign (USA) raw material suppliers.

Financial capacity for equipment acquisition in order to meet new projects requirements



We have a CMM equipment on specialized room for measuring of complex geometries and provide precise measurements of objects for design, testing, assessment, profiling, and reverse engineering of our machined parts.

(Zeiss, Duramax; maximum length in its axis X=500 mm, Y=500 mm; Z=500 mm).



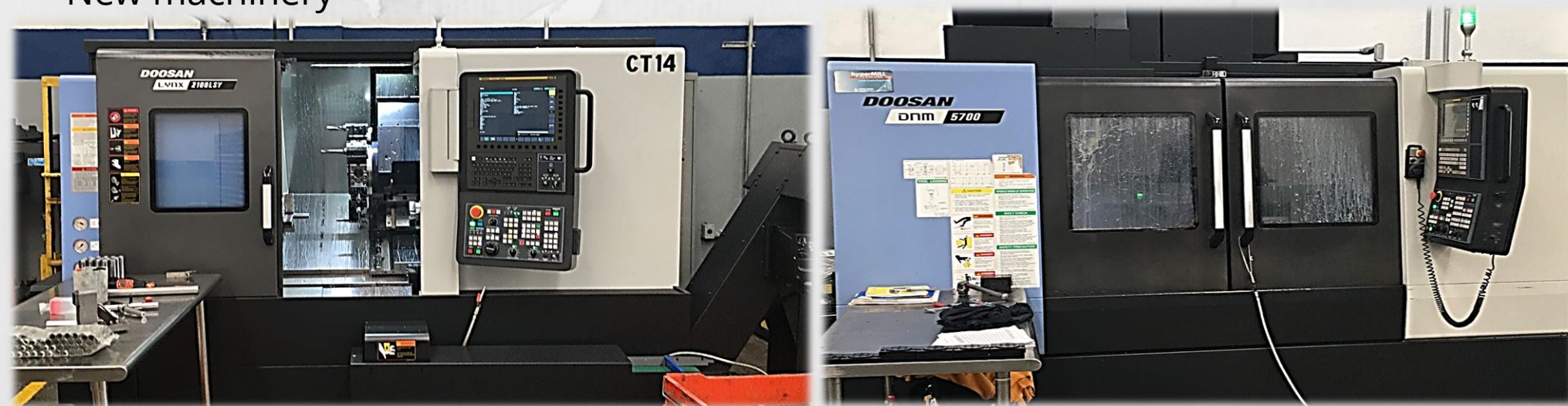
- Vertical machining center 30" x 20" x 16" (4 equipment)
- Vertical machining center 5th axis
- Turning center 21" x 48" (2 equipment)
- Turning center 21" x 21" (4 equipment)
- Turning center 21" x 21" (3 equipment)
- Turning center Lynx 220 LMSC sub spindle. (2 equipment)



- 5 swiss Lathe CNC CITIZEN CINCOM model A20, A32 & L32 equipped with bar-feeder of 3 meters for high production runs

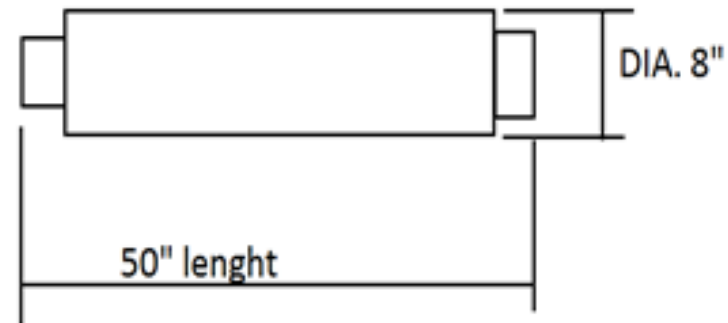


- New machinery

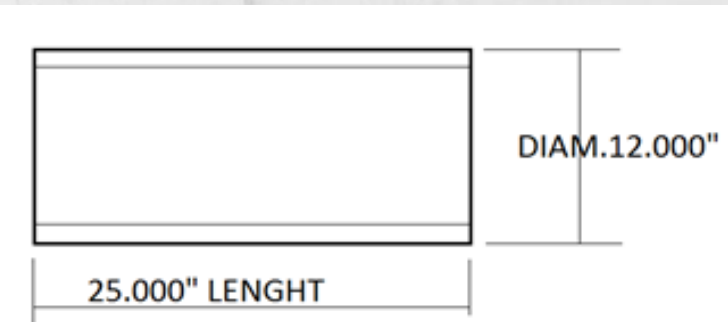


Maximum shaped dimensions that we can manufacture

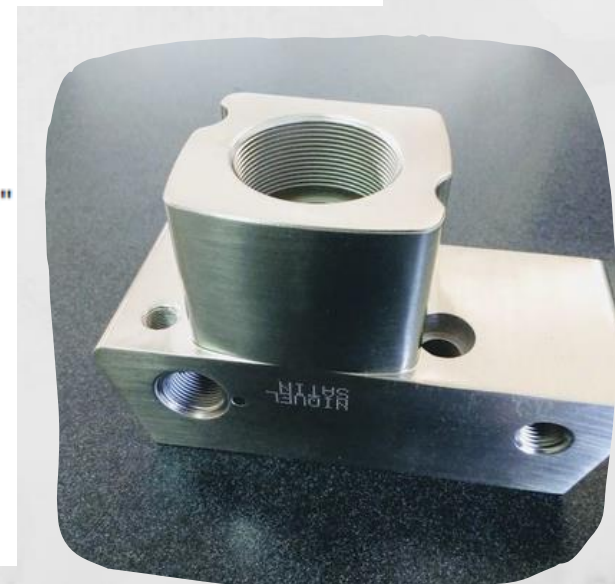
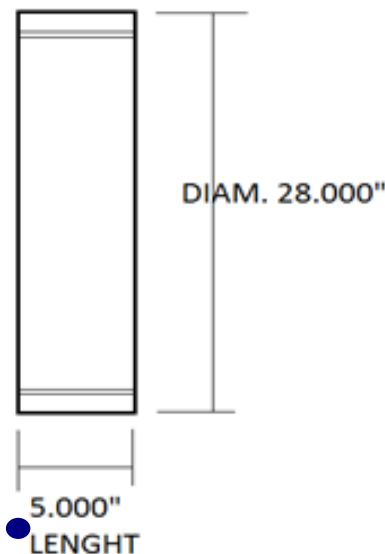
1. Solid bar maximum machining dimension.



2. Pipe with internal or external thread.



3. Rings with inner or external thread.



- Lincoln welding machine 400 amp
- Semi-automatic arc electric arc machine 400 amp
- Horizontal band saw 16" x 32"
- Horizontal band saw 24" x 52"
- 2 Sandblast equipments



MAQ-REY Samples of parts Maq-Rey

Group of pieces developed in Maq-Rey supported by our foundry and coating partner.

1. Casting model
2. Casting
3. Machining parts
4. Precision Assembly



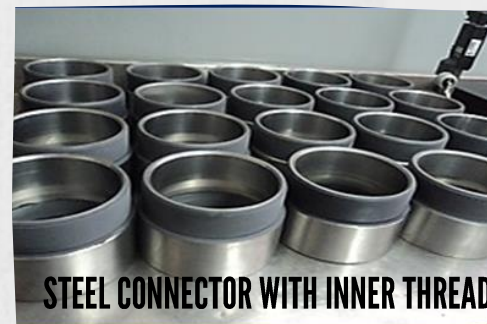
Materials commonly used:

1. Aluminium 6061, 6005 ,2024, Alloys, Casted
2. Strainless Steel 303, 304, fatigue proof, alloy steel 4140, tool steel, carbon steel
3. Bronze, Brass, Copper
4. Casted iron
5. Engineering plastic
6. Ductile iron



MAQ-REY

Samples of parts Maq-Rey



**CASTINGS DEVELOPED FROM
MOLD DESIGN TO FINAL
ASSEMBLY**



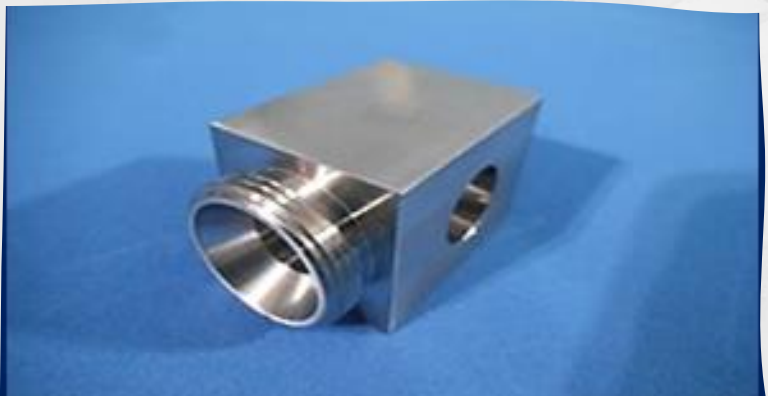
STEEL CLAMPS



**ALUMINIUM NOSES FOR THE
OIL SECTOR**

MAQ-REY

Surfaces finishes quality



PLASTIC PROTECTION PACKAGING

MAQ-REY

Packaging

**PARTS PACKAGED AND READY TO SHIP TO USA
(PACKAGING ACCORDING TO CTPAT STANDARDS).**

