



MAQIM S.A. DE C.V.
ISO 9001:2015

Our Experience Makes the Difference



MAQIM S.A. DE C.V.
ISO 9001:2015

HISTORY



MAQIM manufacturing company offers high precision machining, such as milling, turning, and wave soldering custom tooling on CNC machining centers.

More than 30 years of experience in several different markets have made us regional leaders in the customized machining for tooling and high precision parts, giving us the opportunity to further advance our expertise in delivering cost-efficient solutions for your machining needs and production schedules.



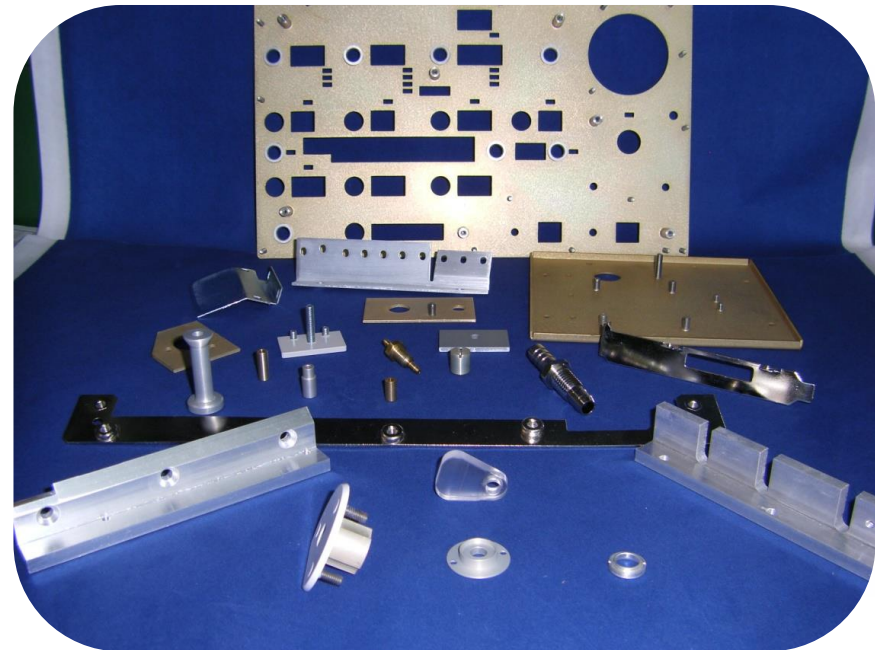


MAQIM S.A. DE C.V.
ISO 9001:2015

MISSION



MAQIM “provides machining solutions for serial production of high precision parts with high quality, best delivery time, service and competitive prices. Focused to increase our customer competitiveness.





MAQIM S.A. DE C.V.
ISO 9001:2015

QUALITY POLICY



MAQIM has the commitment to satisfy its customers needs according with the acquired commitments, based on a win-win relationship to guarantee its presence in the market through a continuous improvement process.





MAQIM S.A. DE C.V.
ISO 9001:2015

TOOLING

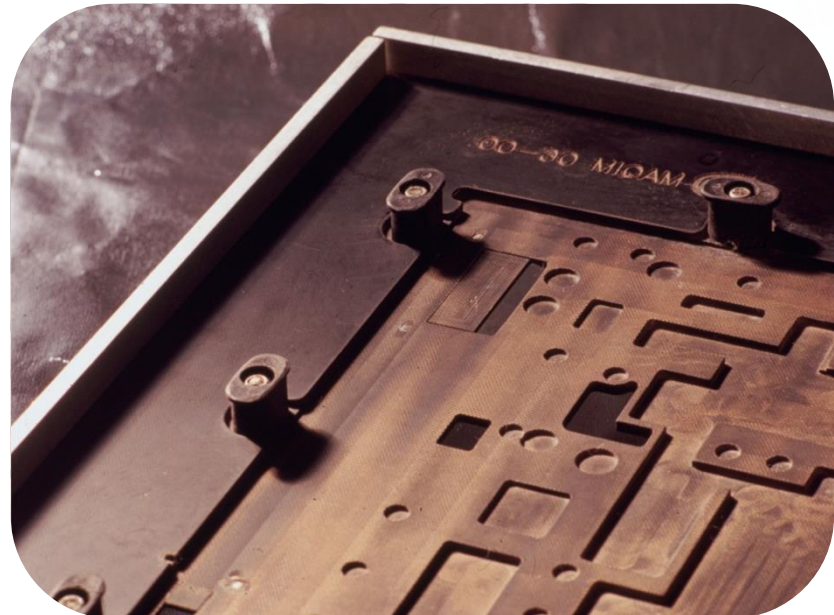


MAQIM with more than 30 years of expertise is leader in design and manufacture

We provide the best solution and design to your tooling needs with the best quality and competitive prices.

Our staff is fully trained to assist you on the best solution for your tooling.

- Pad printing Pallets
- SMT, Reflow &
Wave soldering pallets
- Conformal Pallets
- Radial axial plate.
- Router plates





MAQIM S.A. DE C.V.
ISO 9001:2015

SERIAL PRODUCTION



With more than 30 years of expertise we are regional leaders of high precision machined parts. We have experience developing & producing parts of different materials like Bronze, Stainless Steel, tooling grade steel, carbon steel, Titanium, Inconel 718, Nitronic 50, Aluminum, as well as all kinds of plastics, like Delrin, Peek, Eartalyte, Hdpe, etc.

OUR MAIN SEGMENTS ARE:

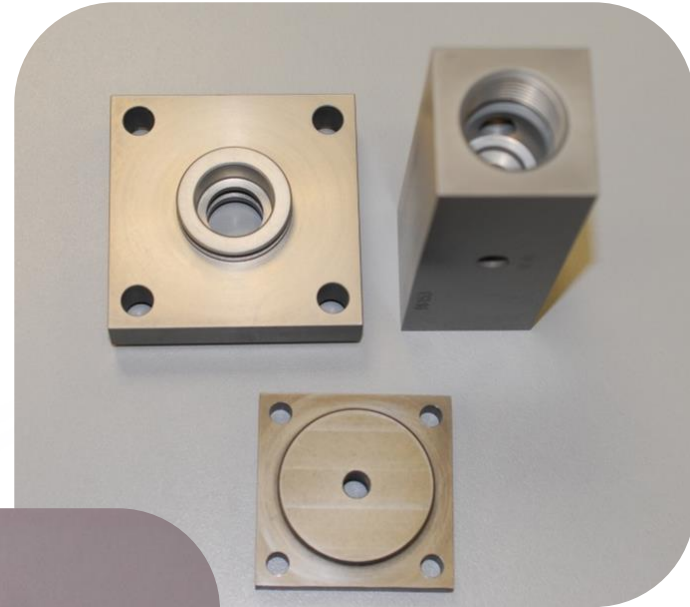
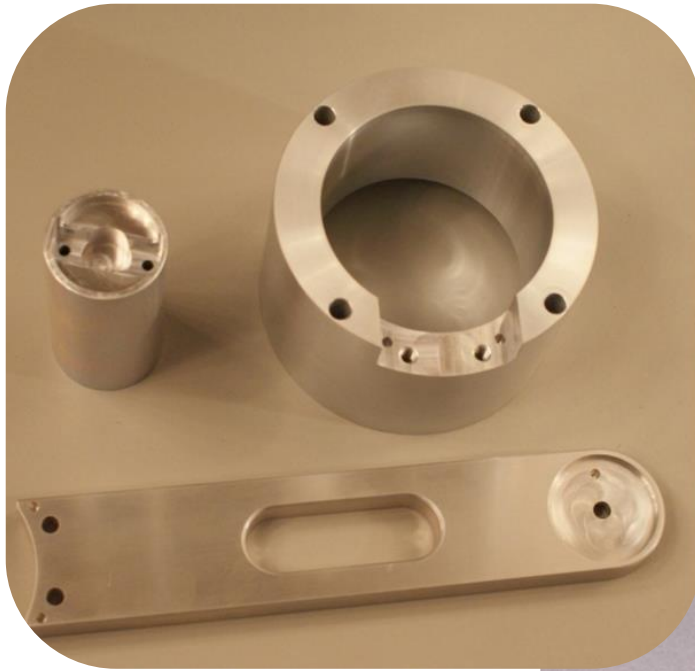
- MEDIC
- INDUSTRIAL
- AEROSPACE
- OIL AND GAS





MAQIM S.A. DE C.V.
ISO 9001:2015

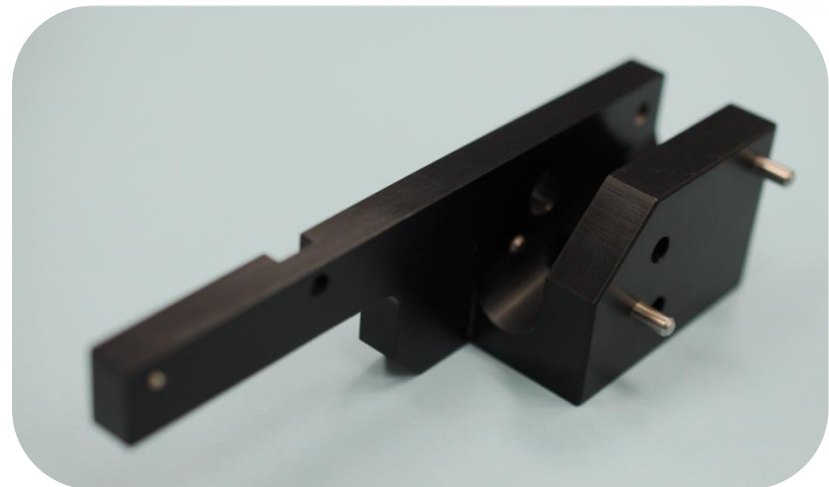
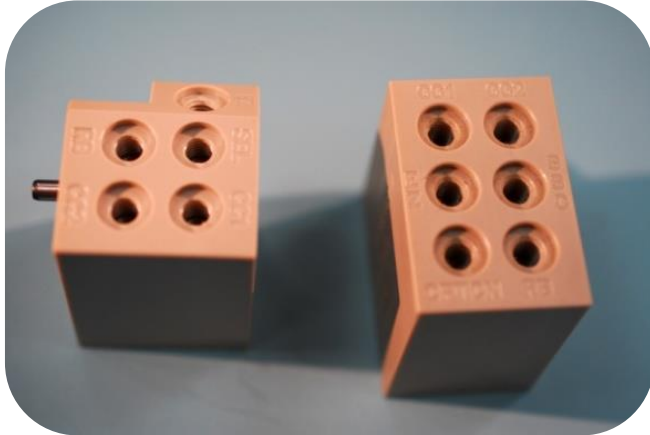
INDUSTRIAL PARTS





MAQIM S.A. DE C.V.
ISO 9001:2015

MEDICAL PARTS





MAQIM S.A. DE C.V.
ISO 9001:2015

OIL AND GAS INDUSTRY





MAQIM S.A. DE C.V.
ISO 9001:2015

MANUFACTURING PLANT



Currently we have the following Equipment:

- 12 Horizontal Machine Center
- 9 Vertical Machining Centers
- 7 Turning Centers (2 to 7 axes)
- 1 Laser cutting machine
- 1 Press brake machine
- 1 CNC WEDM.
- 1 CNC EDM
- 1 Water jet cutting machine
- 1 CNC Blanchard Type Grinder





MAQIM S.A. DE C.V.
ISO 9001:2015

Horizontal Machining KIWA



QUANTITY OF
MACHINES

5

MACHINING CAPACITY

X 25.5"; Y 24"; Z
26.8"

AXES

4

PALLET DIMENSIONS

39.4" x 29.5"

MOTOR

30HP

MAX SPEED

15,000RPM

TOOLS

60

REPEATIBILITY

0.00004"

POSITIONING

0.0001"



MAQIM S.A. DE C.V.
ISO 9001:2015

Horizontal Machining YCM & KITAMURA



QUANTITY OF MACHINES	2
MACHINING CAPACITY	<u>X 25.5"; Y 24"; Z 26.8"</u>
AXIS	4
PALLET DIMENSIONS	19.7" x 19.7"
MOTOR	25 HP
MAX SPEED	15,000 RPM
TOOLS	40
REPEATIBILITY	0.00004"
POSITIONING	0.0001"





MAQIM S.A. DE C.V.
ISO 9001:2015

Horizontal Machining OKUMA 5000 HII



QUANTITY OF MACHINES	1
MACHINING CAPACITY	29.92 x 29.92 x 31.89
AXIS	4
PALLET DIMENSIONS	19.69 x 19.69
MOTOR	35 HP
MAX SPEED	50 ~ 15,000 RPM
TOOLS	48
REPEATIBILITY	0.00004"
POSITIONING	0.0001"



MAQIM S.A. DE C.V.
ISO 9001:2015

Horizontal Machining

MAKINO A51NX



QUANTITY OF MACHINES

3

MACHINING CAPACITY

X 22"; Y 25.2"; Z 25.2"

AXIS

4

PALLET DIMENSIONS

15.7" x 15.7"

MOTOR

25 HP

MAX SPEED

14,000 RPM

TOOLS

60

REPEATIBILITY

0.00004"

POSITIONING

0.0001"



MAQIM S.A. DE C.V.
ISO 9001:2015

Horizontal Machining

MAKINO A61NX



QUANTITY OF MACHINES	1
MACHINING CAPACITY	<u>X 28.7"; Y 25.6"; Z 31.5"</u>
AXIS	4
PALLET DIMENSIONS	19.7" x 19.7"
MOTOR	25 HP
MAX SPEED	14,000 RPM
TOOLS	60
REPEATIBILITY	0.00004"
POSITIONING	0.0001"



MAQIM S.A. DE C.V.
ISO 9001:2015

Vertical Machining FANUC ROBODRILL



QUANTITY OF MACHINES	7
MACHINING CAPACITY	X40", Y20", Z16"
PALLETS	2
AXES	3
PALLET DIMENSIONS	48" X 18"
MOTOR	30 HP
MAX SPEED	20000 RPM
TOOLS	25
POSITIONING	0.00024"
REPEATIBILITY	0.00008"





MAQIM S.A. DE C.V.
ISO 9001:2015

Multi Task Machining NAKAMURA & MURATEC



QUANTITY OF
MACHINES

2

MACHINING CAPACITY

Ø8.25" x 36.4"

MAX SPEED

6,000 RPM

AXES

8

TOOLS

48

SPINDLES

2

TURRET

2 (UPPER AND LOWER)

REPEATIBILITY

0.00008"

POSITIONING

0.0001"





MAQIM S.A. DE C.V.
ISO 9001:2015

Swiss Type Turning Center

CITIZEN L32/ L38



QUANTITY OF MACHINES	1
MACHINING CAPACITY	Ø38MM x 320MM
MAX. SPEED	8,000 RPM
AXIS	9
TOOLS	34
SPINDLES	2
REPEATIBILITY	.00008"
POSITIONING	0.0001"



MAQIM S.A. DE C.V.
ISO 9001:2015

Swiss Type Turning Center L20-7, L20-X



QUANTITY OF MACHINES	2
MACHINING CAPACITY	Ø.787" x 7.87"
MAX. SPEED	8,000 RPM
AXES	7 AND 8
TOOLS	32
SPINDLES	2
REPEATIBILITY	.00008"
POSITIONING	0.0001"



MAQIM S.A. DE C.V.
ISO 9001:2015

Automatic CNC Turning Center LICO LNT36



QUANTITY OF MACHINES	1
MACHINING CAPACITY	Ø1.42" x 5.12"
MAX. SPEED	6000 rpm
AXES	10
SPINDLES	2
TOOLS	8 LIVE TOOLS
POSITIONING	0.0001"
REPEATIBILITY	0.00004"





MAQIM S.A. DE C.V.
ISO 9001:2015



HARDINGE CNC Turning Center



QUANTITY OF
MACHINES 1

MACHINING CAPACITY $\varnothing 11.1" \times 15"$

MAX. SPEED 5000 rpm

AXES 2 (live tools)

TOOLS 12

POSITIONING $\pm 0.0002"$

REPEATIBILITY $\pm 0.0001"$



MAQIM S.A. DE C.V.
ISO 9001:2015



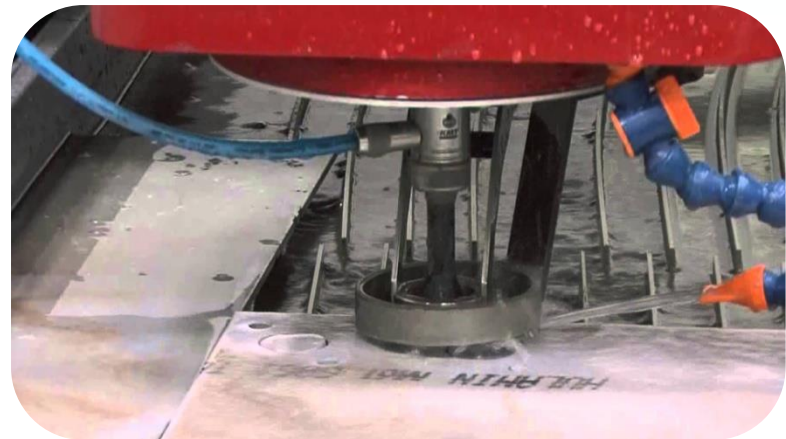
WATER JET MITSUBISHI MWX4

QUANTITY OF MACHINES	1
MACHINING CAPACITY	7" X 72" X 144"
AXES	5
POSITIONING SPEED	687"/MIN
PUMP HP/PS	60HP / 90,000 PSI
POSITIONING	0.002"
REPEATIBILITY	0.002"



Taper Control System.

This system is servo motor driven and controls the angle of "A" Axis, and the rotation on "C" Axis and allows straight cuts on thicker material





MAQIM S.A. DE C.V.
ISO 9001:2015

LASER CUTTING AMADA

ENSIS-3015AJ



QUANTITY OF MACHINES	1
MACHINING CAPACITY	7" X 72" X 144"
AXIS	4
POSITIONING SPEED	4724"/MIN
POWER	2000 W
POSITIONING	0.002"
REPEATIBILITY	0.0002"





MAQIM S.A. DE C.V.
ISO 9001:2015



PRESS BRAKES EG 4010



PRESS CAPACITY (KN) 400

AXIS 7

BEND LENGTH (MM) 1049

DISTANCE BETWEEN FRAMES (MM) 709

STROKE LENGTH (MM) 150

OPEN HEIGHT (MM) 419





MAQIM S.A. DE C.V.
ISO 9001:2015

CNC WEDM & CNC EDM



FW-19-ACTSPARK

- 3 Axes
- MACHINING DIMENSIONS
X=13.7" Y=12.5" Z=5.9"



ACTSPARK SP1
AGIE CHARMILLS

- 3 Axes
- MACHINING DIMENSIONS
X=12.5" Y=9.8" Z=9.8"



MAQIM S.A. DE C.V.
ISO 9001:2015

SURFACE FINISH

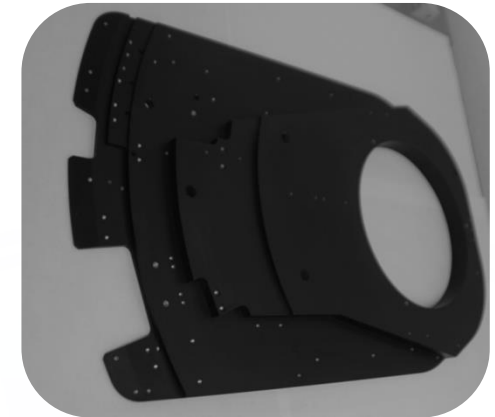


Zinc



Galvanize, Clear & Black

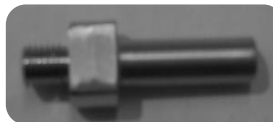
Nikel Electroless



Clear, Black, or colored Anodizing

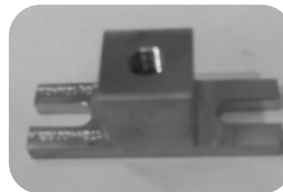


Hard Anodizing
W/ Teflon Seal



Passivated

Powder coating



Electropolish



Phosphatizing



MAQIM S.A. DE C.V.
ISO 9001:2015

METROLOGY LABORATORY



Our metrology lab has a controlled atmosphere, with the most qualified personal, in order to have the correct readings for high precision parts and assure the best quality.





MAQIM S.A. DE C.V.
ISO 9001:2015

MAIN QUALITY EQUIPMENT



2 CNC CMM

- Capacity of 700x1000x600mm
- Resolution 0.00100 mm
- Visual /laser scanning



ROUNDNESS TEST

- Measuring range $\pm 1,000 \mu\text{m}$



OPTICAL COMPARATOR

- Capacity of 150x100mm
- Resolution 0.00100 mm



MAQIM S.A. DE C.V.
ISO 9001:2015

MAIN QUALITY EQUIPMENT



1 KEYENCE IM7030

- Capacity of 300x200mm
- Resolution $\pm 0.5 \mu\text{m}$



MAQIM S.A. DE C.V.
ISO 9001:2015

MAIN QUALITY EQUIPMENT



MITUTOYO LH-600E

- Capacity 0 to 972mm (600mm), 0 to 38" (24")
- Displacement accuracy when measuring a height of 600mm: 1.7 μ m



MAQIM S.A. DE C.V.
ISO 9001:2015



LOCATION

- We are located behind Guadalajara International Airport by the highway “Chapala Road”.
- We are near the most important companies in the area.





MAQIM S.A. DE C.V.
ISO 9001:2015

THANK YOU!!