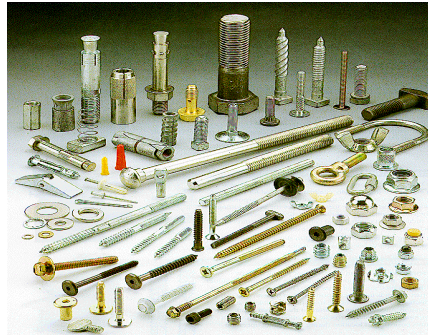




**ARCHER**  
MANUFACTURING

**Custom industrial stampings, secondary operations, and fasteners**



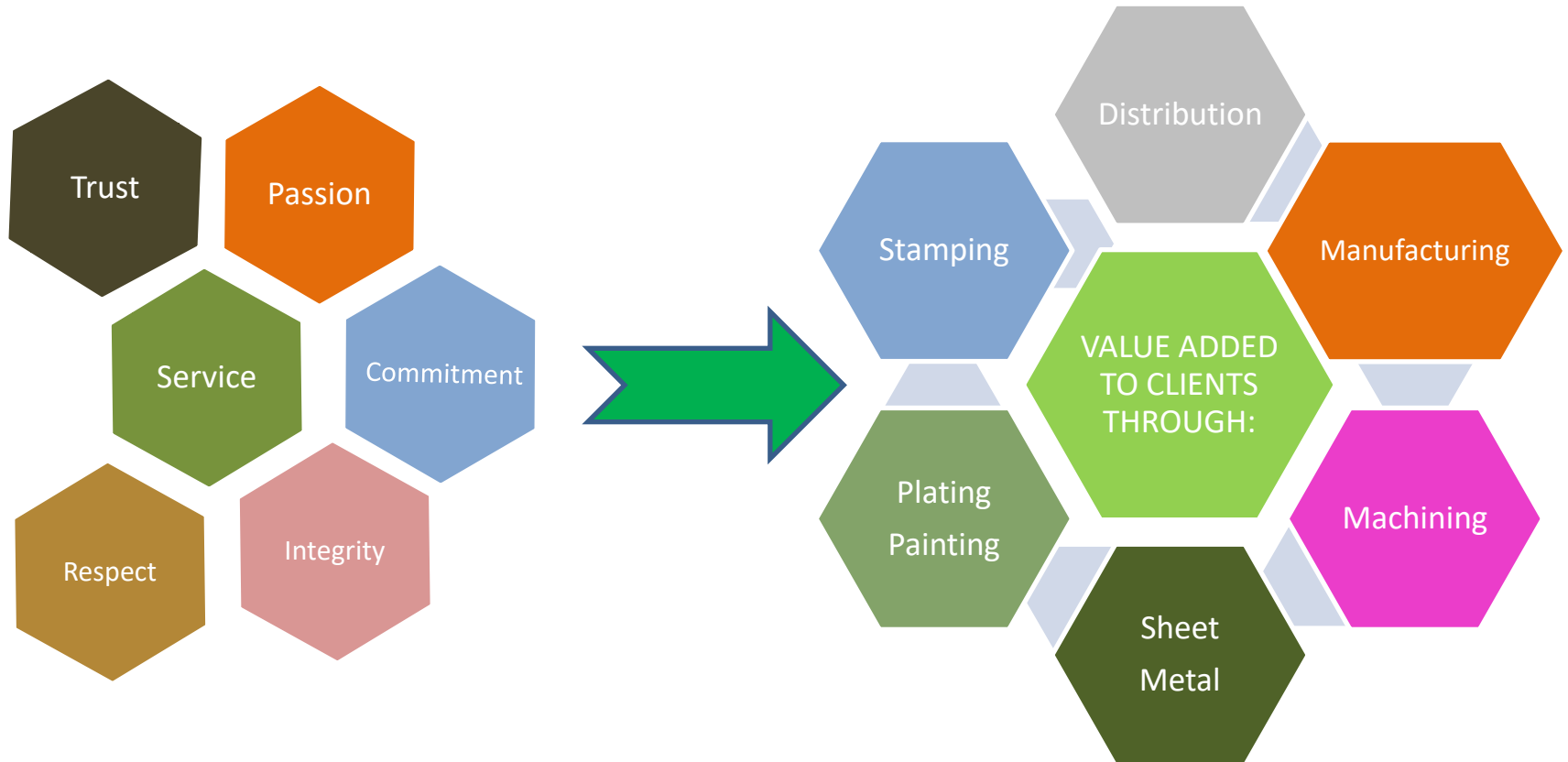
# Getting to Know Us

---

**Archer LLC:** We are a leading company with integral solutions of great value, innovation and high quality, grew into a focus on providing customers with precision parts manufacturing, design, technical solutions enterprises of fastener distribution, commodity inventory management systems (VMI's), metal plating and finishes because we know that it's about a lot more than just sending you a part. It's about making sure it's the right part, on time, every time. Our commitment to supplying products with only the highest quality has been an integral part of our longevity and success in this business.



# Our values to give our clients more value added



# Where our products contribute



EGR Valves



Points  
and Condensers



Caps and Rotors



Oil Pressure  
Senders



Solenoids/ Relays



Throttle Body  
Regulator, Throttle  
position sensors



PCV



Pick-ups,  
Vacuum Actuators



# Our T2 Customers to OEMs





# Metal Plating / Finishes



**Process available:**

- Silver
- Nickel
- Tin
- Bright Dip, Cleaning
- Iron Phosphate
- Zinc Phosphate
- Copper
- Conversion Coating
- We can develop any process that is required according to your needs.



# Capability

- LASER CUTTING MACHINE
- CNC MILLS
- CNC LATHES CONVENTIONAL LATHES
- CONVENTIONAL MILLS CYLINDRICAL GRINDING
- MACHINE HORIZONTAL GRINDING



# Capability

**Fine Blanking Machine up to 100 strokes per minute ( 800 kN) 80 to (400 kN) 40 to Stroke ( 1.97 " ) 50mm**

## **BACK PRESSURE**

**Nominal force ( 220 kN) 22 to V-RING Nominal force ( 250 kN) 25 to**

## **TOOL DIMENSIONS**

**Lower Table – Width – (16.942")  
430mm Lower table – Deep- (19.306 ")  
490 mm Top Table – Width – (16.548")  
420mm Top Table – Deep – (16.548")  
420mm closing height max. ( 9.062 ")  
230mm Carriage adjustment ( 3.152 " )  
80 mm  
Step between front uprights ( 17.73 ") 450 mm**





# Capability



# Capability



# Capability





# Capability



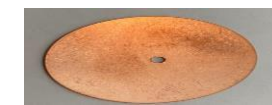
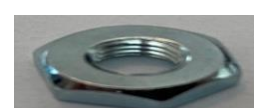
# Products

---



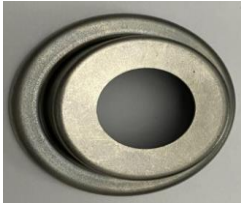
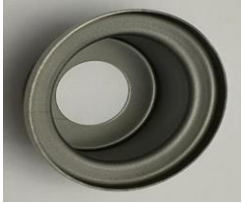
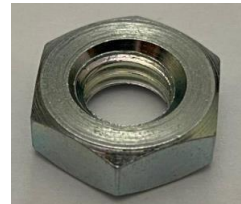
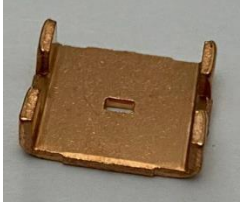


# Products



# Products

---

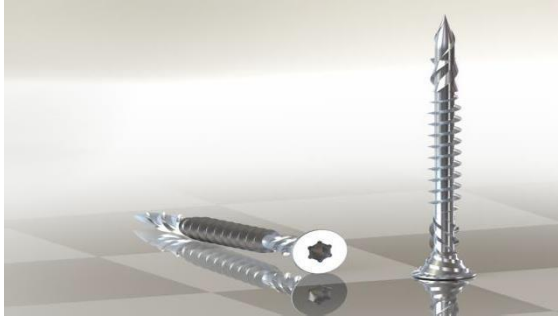


# Products

---



# Products



# Products

---





# Products



# Combined Capacities

---

## **Production Capability:**

Automotive Fastener (M1.6~M16)

Shaft/Insert/nut (Brass, SS, M1~M10, 1~25mm length)

## **Monthly Production Capacity:**

Automotive Fastener: 8 million

Brass Insert/nut: 20 million

## **Major Manufacturing Process:**

Heading, Threading, Heat Treat, Plating, Stamping



# Contact Us

---

<https://archer-mfg.com/>

[Sales@archer-mfg.com](mailto:Sales@archer-mfg.com)

[ricardo.velazquez@archer-mfg.com](mailto:ricardo.velazquez@archer-mfg.com)

---

---

***Thank You!***

---