



Presented for:

Mexico's Supply Chain Nearshoring Summit

Conferences • Exhibition • B2B Meetings

AEROSPACE • AUTOMOTIVE • ELECTRONICS • MEDICAL • APPLIANCES

Queretaro, Mexico

@Queretaro Congress Center

November 29-30, 2023

Prepared by:

Rafael Romo

November 2023

Company Locations



Emigsville, PA.- USA

187,000 sq ft

~160 employees

ISO 9001:2015 / IATF 16949:2016 certified



Hermosillo, Son.- Mexico

51,000 sq ft

~110 employees

ISO 9001:2015 / IATF 16949:2016 certified



Revenue

2022 - \$32 million

Automotive is 40% and strategically growing



Advantages

In Business since 1985 providing a single source for custom components applications

WORLD CLASS INTEGRATED SUPPLIER:

- Internal design for molds, dies and automation assembly
- **Tooling fabrication and 24/7 tooling support**
- High speed stamping up to 1600SPM
- Conventional injection molding
- Insert molding-shuttle, rotary & reel-to-reel
- Cable assembly
- Custom assembly-low and high volume, automated and semi-automated
- **Global Manufacturing**

INDUSTRIES SERVED

- ELECTRONICS
 - MEDICAL
 - AUTOMOTIVE
 - INDUSTRIAL AND COMMERCIAL
 - AEROSPACE & DEFENSE
-
- Specializing in collaborative design with customers to optimize component design and manufacturability
 - Employee owned company (ESOP)

Capabilities

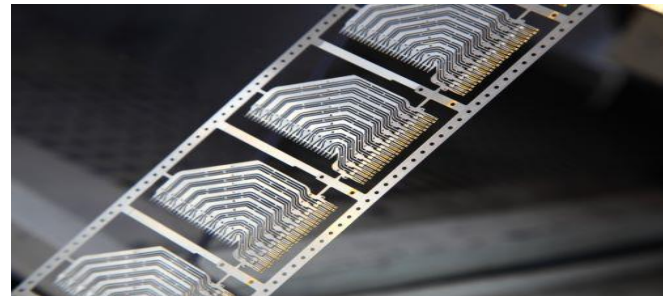
Design Engineering



Tool Fabrication



High Speed Stamping



Injection & Insert Molding



Manufacturing Automation & Assembly



Insert Molding

Pioneers in Advanced Molding Technology

Operating a comprehensive, self-sufficient mold tool design, fabrication and production facility under one roof drives our expertise to a level of excellence our customers depend on for rapid turnaround prototypes and expeditious time to run production mold tooling.



Injection Molding

Trained in systematic molding techniques for high density precision $\pm 0.002''$ true position tolerance solutions using a broad range of resins - LCP, PBT, Ryton, Nylon, TPE, PEI, TPX, PE and PP and many industry specific specialty formulations, it's no mystery why leading fortune 500 companies turn to New Concept technology for problem solving and innovation driven competitive solutions.



Rotary & Shuttle Molding

It is often necessary to integrate insert molding operations into additional processes; we are experts in both rotary and shuttle insert molding, providing semi and fully automated loading / transport / multistep actions. We leverage our assembly engineering capabilities to optimize manufacturing efficiency and quality for your competitive advantage.

Reel to Reel Molding

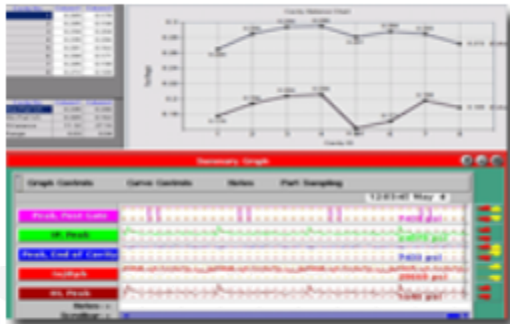
Pioneers in Advanced Molding Technology

Pioneers of reel to reel insert molding and innovators in advanced rotary and shuttle molding techniques, New Concept Technology are relentless in the pursuit of the advancements in molding efficiency and manufacturing process integration to better serve our customers.



Reel to Reel Molding

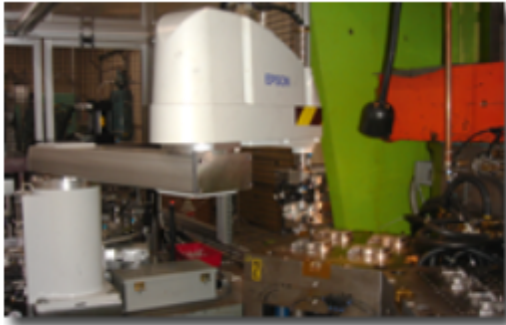
For High Volume Cost Sensitive Insert Molding with unsurpassed Repeatability and Quality, we pioneered then perfected, the reel to reel molding process to facilitate rapid high volume transport of stamped components through the molding tools and subsequent assembly operations. Scrutinized by digital imaging systems with meticulous analytical algorithms synchronizing the servo driven feeds for absolute manufacturing harmony - why settle for competition when you can be the leading light?



Advanced Engineering

Proficient in decoupled & scientific molding principles with dynamic in-cavity sensors linked to Nautilus and RJG analytics for capability modeling, real time protection, control algorithms to assure mold integrity and consistent performance quality; our single, multi & high cavitation level tools incorporate pioneering industry innovations for exceptional results and competitive quality positioning.

Automation & Assembly



Automation & Process Integration

A comprehensive self-sufficient design through production facility under one roof with enhanced inter-discipline collaboration in an innovation nurturing environment sustains our continuous drive towards manufacturing efficiency & excellence. We strive for the highest value cost efficient and timely solutions by using highly automated manufacturing & assembly technologies.



High Volume High Speed Processing

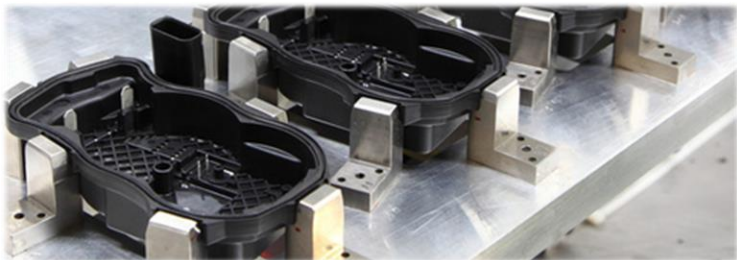
Experts in High Volume Cost Sensitive automated manufacturing solutions; we pioneer multi stage process operations incorporating mass feed and rapid transport through multiple actions, including insert molding, assembly & packaging.



Automated Inspection & Controls

Scrutinized by digital imaging systems with meticulous analytical algorithms for unsurpassed repeatability and quality with electronic record logging, our automated and robotic assembly systems deliver absolute cost certitude in today's unsettled economic climate.

Services



Rapid Design & Prototyping

Design Innovation



Product and
Manufacturing Design



Design to
Cost Solutions



Concurrent
Engineering



Manufacturing

Running
What We Build



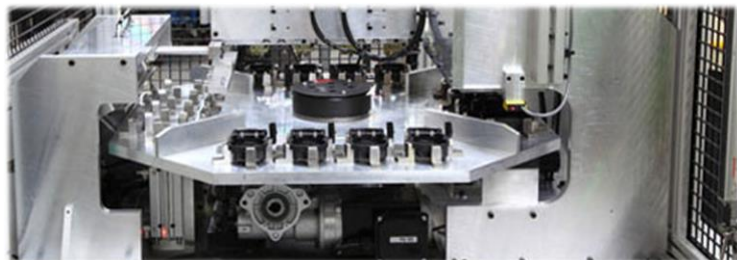
Reel to Reel
Insert Molding



High Volume
High Speed



In-House
Tool Fabrication



Automation & Cost Engineering

Process Integration



Inspection
and Controls



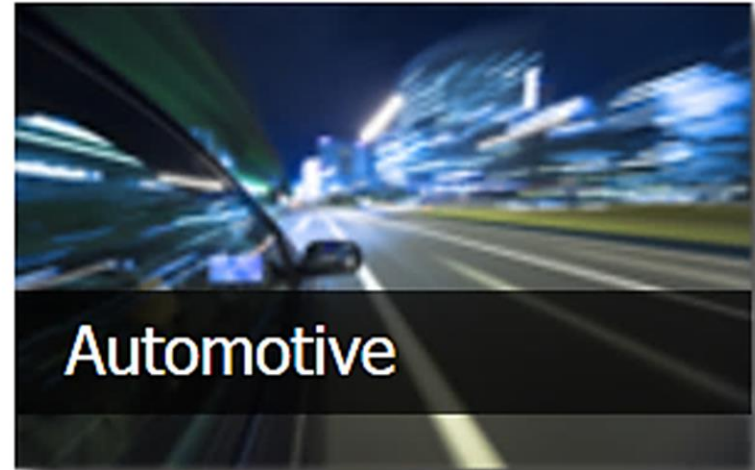
Manufacturing
Excellence



Continuous
Improvement



Markets Served



Quality Certificates

ABS Quality Evaluations

Certificate Of Conformance

This is to certify that the Quality Management System of:

New Concept Technology, Inc.
320 Busser Road
Emigsville, PA 17318-0297
U.S.A.

has been assessed by ABS Quality Evaluations, Inc. and found to be in conformance with the requirements set forth by:


ISO 9001:2015

The Quality Management System is applicable to:

MANUFACTURE OF CUSTOM STAMPED, MOLDED, AND ASSEMBLED COMPONENTS

This certificate may be found on the ABS QE Website (www.abs-qe.com). For certificates issued in the People's Republic of China information may also be verified on the CNCA website (www.cnca.gov.cn).

Certificate No: 53292
Effective Date: 02 July 2021
Expiration Date: 01 July 2024
Revision Date: 02 July 2021


Dominic Townsend, President



Validity of this certificate is based on the successful completion of the periodic surveillance audits of the management system defined by the above scope and is contingent upon prompt, written notification to ABS Quality Evaluations, Inc. of significant changes to the management system or components thereof.

ABS Quality Evaluations, Inc. 1701 City Plaza Drive, Spring, TX 77389, U.S.A.

Validity of this certificate may be confirmed at www.abs-qe.com/cert_validation.

Copyright 2011-2021 ABS Quality Evaluations, Inc. All rights reserved.

ABS Quality Evaluations

Certificate Of Conformance

This is to certify that the Quality Management System of:

New Concept Technology, Inc.
320 Busser Road
Emigsville, PA 17318
U.S.A.

has been assessed by ABS Quality Evaluations, Inc. and found to be in conformance with the requirements set forth by:

ISO 13485:2016

The Quality Management System is applicable to:

CONTRACT MANUFACTURER AND ASSEMBLY OF CUSTOM OVERMOLD SOLUTIONS FOR MEDICAL PRODUCTS

Certificate No: 60875
Effective Date: 01 December 2020
Expiration Date: 30 November 2023
Revision Date: 01 December 2020


Dominic Townsend, President



Validity of this certificate is based on the successful completion of the periodic surveillance audits of the management system defined by the above scope and is contingent upon prompt, written notification to ABS Quality Evaluations, Inc. of significant changes to the management system or components thereof.

ABS Quality Evaluations, Inc. 1701 City Plaza Drive, Spring, TX 77389, U.S.A.

Validity of this certificate may be confirmed at www.abs-qe.com/cert_validation.

Copyright 2011-2020 ABS Quality Evaluations, Inc. All rights reserved.

Quality Certificates

NCT MX ISO 9001-2015 & IATF 16949-2016

ABS Quality Evaluations
Certificate Of Conformance
 This is to certify that the Quality Management System of:
New Concept Technology, Inc.
Necontech de Mexico
OBRERO MUNDIAL NO. 8 EL LLANO
Hermosillo, Sonora 83210
México

has been assessed by ABS Quality Evaluations, Inc. and found to be in conformance with the requirements set forth by:
ISO 9001:2015

The Quality Management System is applicable to:
MANUFACTURE OF CUSTOM MOLDED COMPONENTS INCLUDING THE ASSEMBLY OF COMPONENTS.

This certificate may be found on the ABS QE Website (www.abs-qe.com). For certificates issued in the People's Republic of China information may also be verified on the CNCA website (www.cnca.gov.cn).

Certificate No: 53293
 Effective Date: 19 August 2021
 Expiration Date: 25 June 2024
 Revision Date: 19 August 2021

Dominic Townsend
 Dominic Townsend, President

Validity of this certificate is based on the successful completion of the periodic surveillance audits of the management system defined by the above scope and is contingent upon prompt written notification to ABS Quality Evaluations, Inc. of significant changes to the management system or components thereof.
 ABS Quality Evaluations, Inc. 1701 City Plaza Drive, Spring, TX 77389, U.S.A.
 Validity of this certificate may be confirmed at www.abs-qe.com/iet_validation.
 Copyright 2011-2021 ABS Quality Evaluations, Inc. All rights reserved.

ABS Quality Evaluations
Certificate Of Conformance
 This is to certify that the Quality Management System of:
New Concept Technology, Inc.
Necontech de Mexico
OBRERO MUNDIAL NO. 8 EL LLANO
Hermosillo, Sonora 83210
México

(WITH ADDITIONAL FACILITIES LISTED ON ATTACHED ANNEX)
 has been assessed by ABS Quality Evaluations, Inc. and found to be in conformance with the requirements set forth by:
IATF 16949:2016

The Quality Management System is applicable to:
MANUFACTURE OF STAMPED AND CUSTOM MOLDED COMPONENTS AND ASSEMBLIES EXCLUDING PRODUCT DESIGN, IATF 16949:2016 CLAUSE 8.3

Certificate No: 53291.B
 Effective Date: 02 July 2021
 Expiration Date: 01 July 2024
 Revision Date: 02 July 2021
 IATF No: 0408668

Dominic Townsend
 Dominic Townsend, President

Validity of this certificate is based on the successful completion of the periodic surveillance audits of the management system defined by the above scope and is contingent upon prompt written notification to ABS Quality Evaluations, Inc. of significant changes to the management system or components thereof.
 ABS Quality Evaluations, Inc. 1701 City Plaza Drive, Spring, TX 77389, U.S.A.
 Validity of this certificate may be confirmed at www.abs-qe.com/iet_validation.
 Copyright 2011-2021 ABS Quality Evaluations, Inc. All rights reserved.

ABS Quality Evaluations
Certificate Of Conformance
 IATF 16949:2016
ANNEX
 Certificate No: 53291.B
 IATF No: 0408668

New Concept Technology, Inc.
 At Below Facilities:

Facility: 330 Banner Road
 Englewie, PA 17139-0287
 U.S.A.

Activity: Process Design, Purchasing, Sales, Supplier Management, Quality System Management, & Management Review

Validity of this certificate may be confirmed at www.abs-qe.com/iet_validation.
 Copyright 2011-2021 ABS Quality Evaluations, Inc. All rights reserved.

Class 6 Cleanroom Classification Certification



Airborne Contamination Identification Associates Ltd.

Certifies that

New Concept Technology

320 Busser Road

PO Box 0297

Emigsville PA 17318-0297

“Medical Assembly Cleanroom ” meets and exceeds ISO 14644-1
Class 6 on 0.3, 0.5, & 1.0 micron for airborne particulate cleanliness **at rest**.

“Medical Assembly Cleanroom ” meets and exceeds ISO 14644-1
Class 6 on 0.3, 0.5, & 1.0 micron for airborne particulate cleanliness **in production**.

Certificate # 03-16-2021
Expires: April 01, 2022

Certified By:



Randall R. Leaman C.I.A.Q.P.
“Certified Indoor Air Quality Professional”

© 2009 Masterpiece Studios, Inc.

High Speed Stamping







NEW
CONCEPT
TECHNOLOGY