





Plant 1 - Manhattan, Montana



Plant 2 - Juarez, Mexico



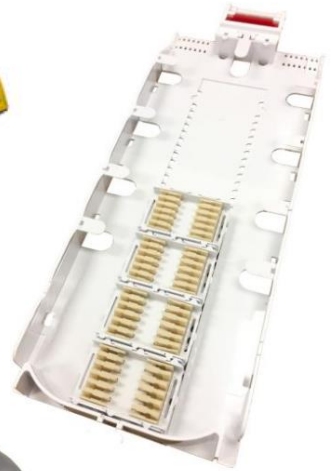
**Sales Office
Crosswell, Michigan**

**Cross-Border Warehouse
El Paso, Texas**

Firearms / Sporting



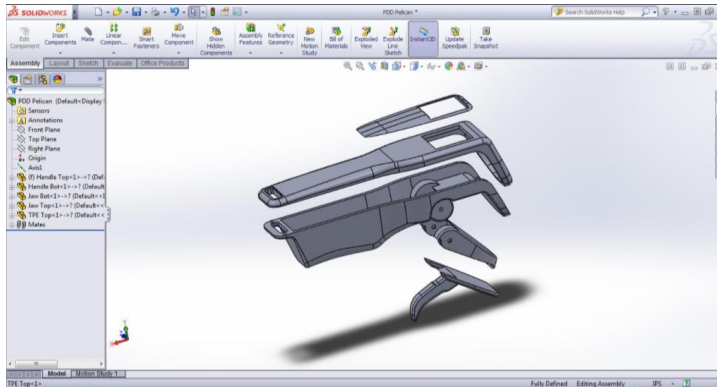
Industrial / Auto



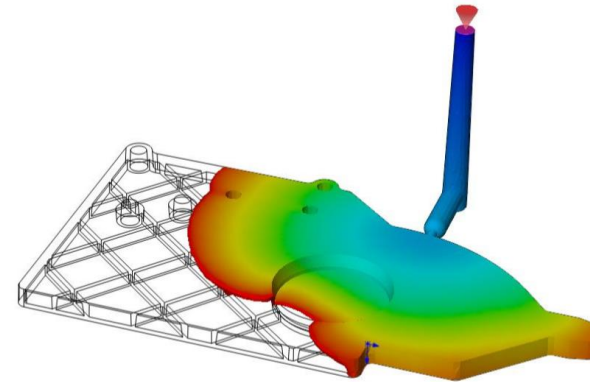
Pet Products



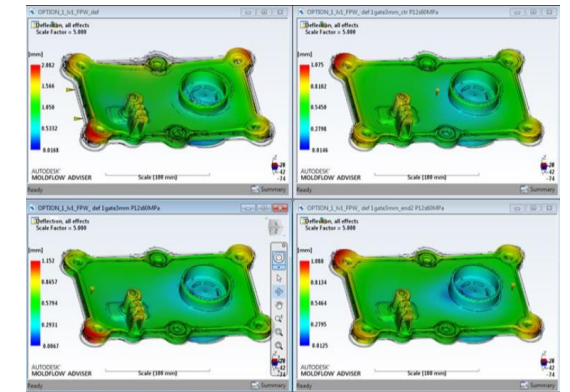
Full Service Support For Manufacturing Success



**Design - SolidWorks
CAD**



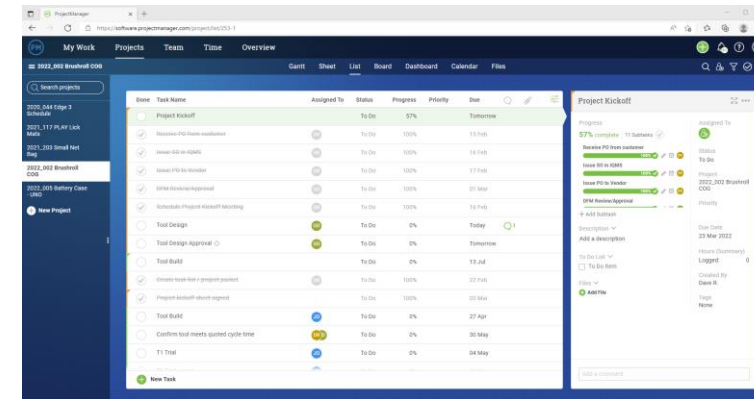
Mold Filling Analysis



**Warp / Sink / Part Risk
Analysis**



DFM Team Approach Process



Program Management System

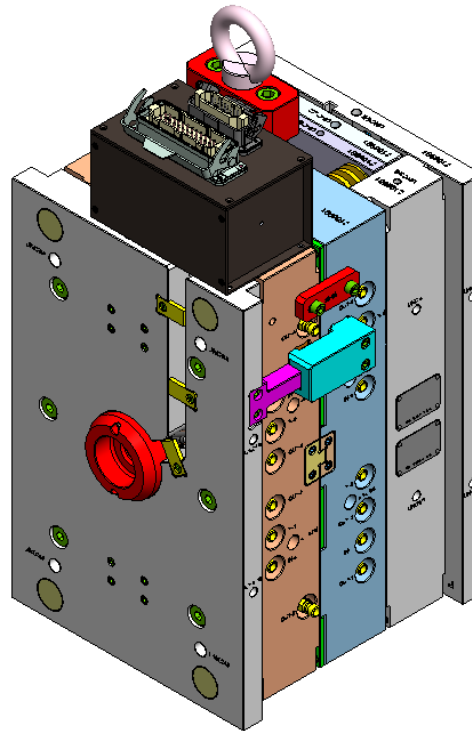
Mold Building Services – Low Cost Asian & US Domestic Builds

Designs to Plastics Industry Association Standards

Standard Components



Full 3D Designs

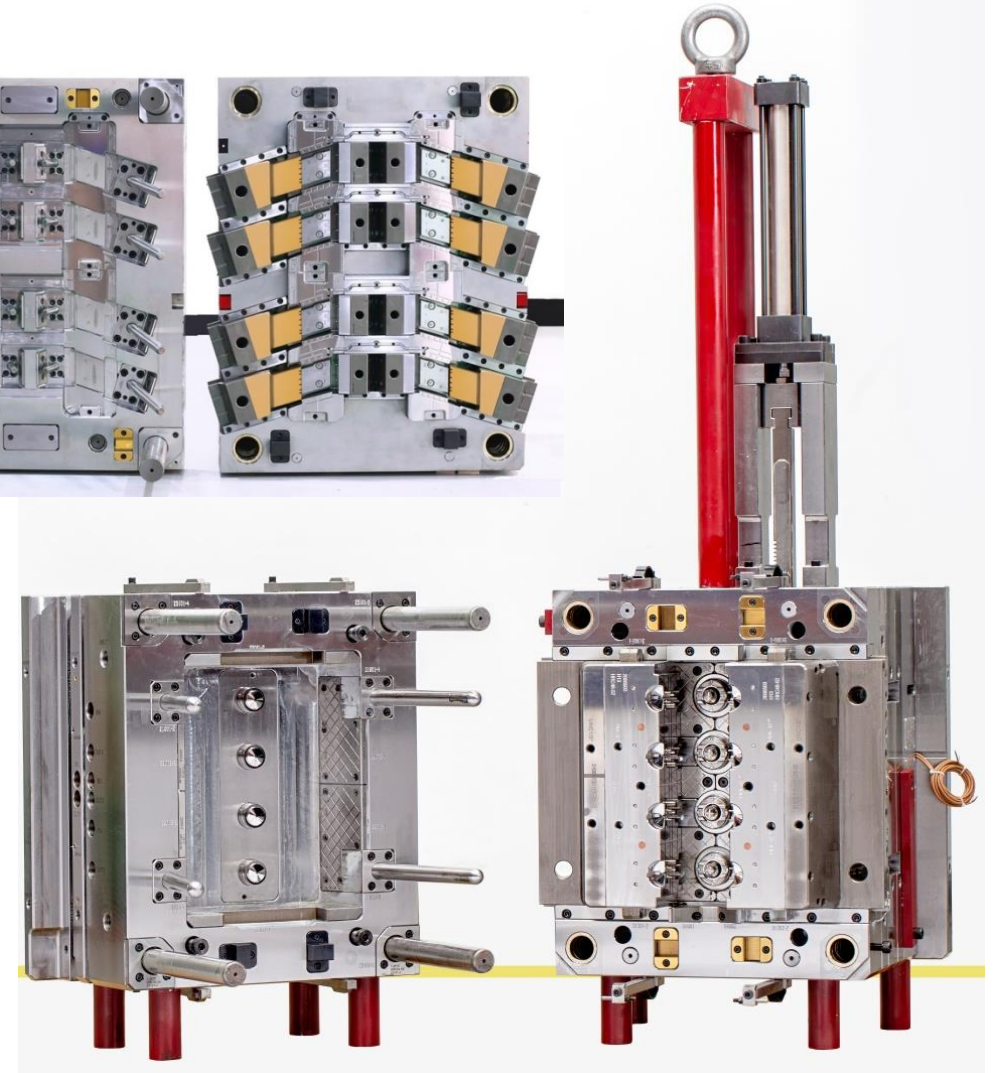
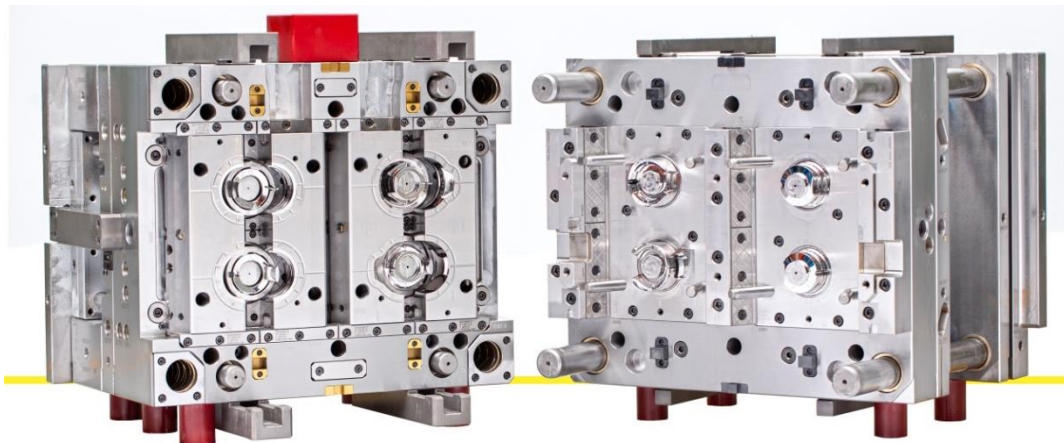
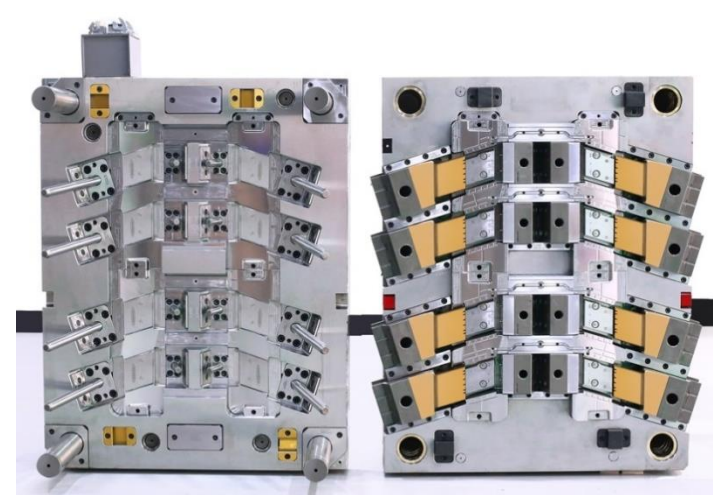
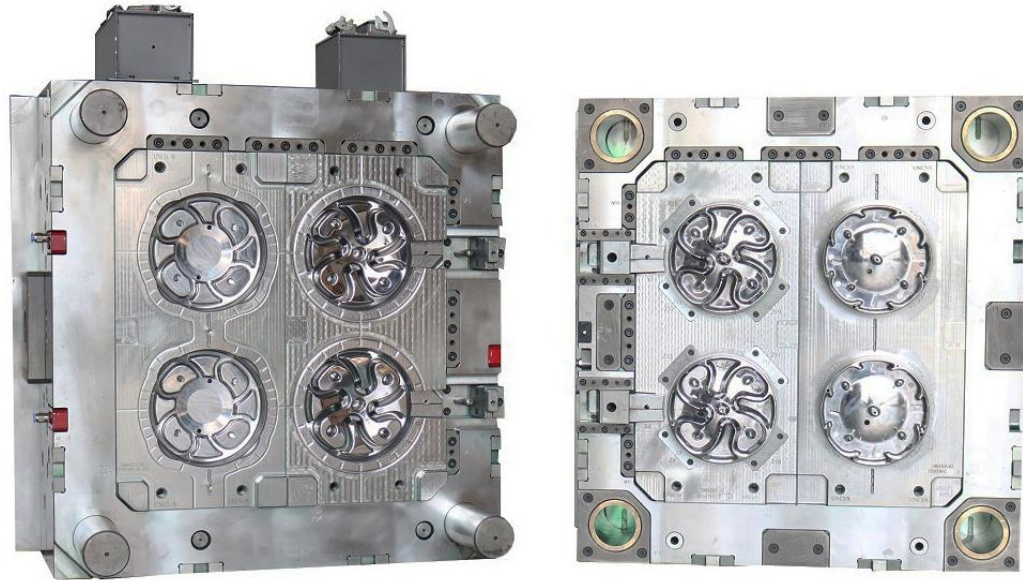


Specified Steels



Tooling – Full Range from Prototype to Class 101 Mass Production

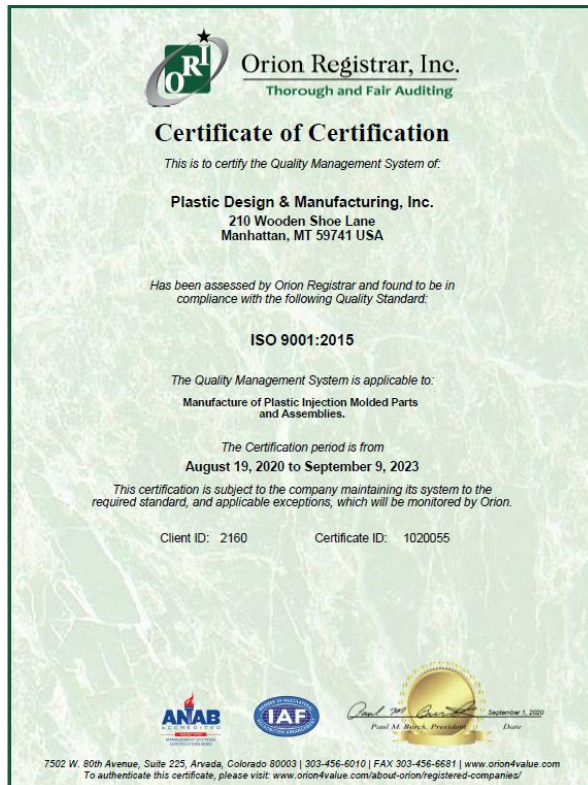
PDM Direct employees in Asia for Engineering & Logistics





22 Modern, Well-Maintained Injection Molding Machines
50 ton – 1400 ton Press Range
2 Shot Molding, Insert Molding, & Overmold Capabilities
Secondary Operations - Decoration, Welding, Assembly, Packaging

PDM - Quality



ISO 9001 Certified
(Audits = Zero Non-Conformities)

Established Quality System

IQMS – ERP System

Satisfied Customers

Firearm & Sporting Markets



Industrial & Consumer



Pet Products



Thank you!

www.makeitplastic.com

info@makeitplastic.com



210 Wooden Shoe Lane | Manhattan, MT | 59741 | Ph: (406) 284-4146
Jose Mateos Torres 7154 | Cd. Juarez, Chihuahua, MX 32584 | Ph: (011) 52 656 642 4166