



INNOCENTRO
AEROSPACIAL S.C.

Transforming ideas into global solutions



DUNS# 812786477

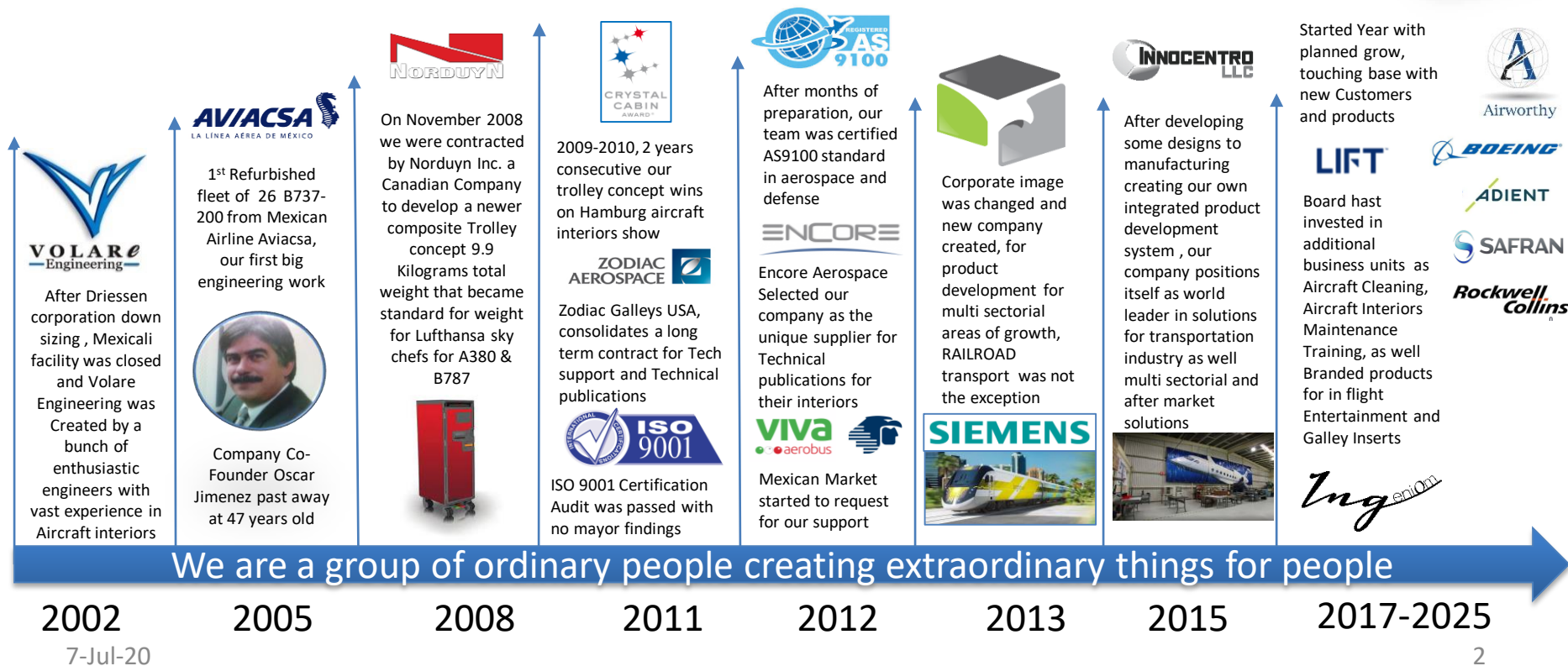
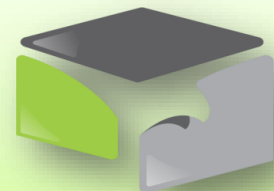
Business license RFC: IAE131218 8FA

ISO9001:2015 & AS9100D

Cert # 11859

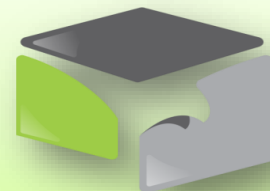
Our Evolution

Performing with results



VALUE OFFER

Long term relationship and confidence



- Cabin Interiors OEM's
- MRO & 2nd Tiers
- Vehicle Operators
- Vehicle Manufacturers



Product concept, design engineering, aerospace equipment, for component and passenger interior cabins, provided us of understanding focusing on engineering services for galleys, cabinets, furniture.

To work under airworthiness, sanitary, and health regulations, under AS9100 quality following aircraft manufacturer specifications and Aerospace industry standards

Along this, newer opportunities with niches for sectors out of our verticality in Interiors and aerospace were added for transportation and after market.



CLIENT LOCATIONS

Thinking Local Acting Global



Aerospace



Transportation



After
Market



**SOUTHERN
CALIFORNIA**

**BREMEN /
HAMBURG**

**Regional
Coverage**

Chatsworth CA

Phoenix AZ

San Diego CA

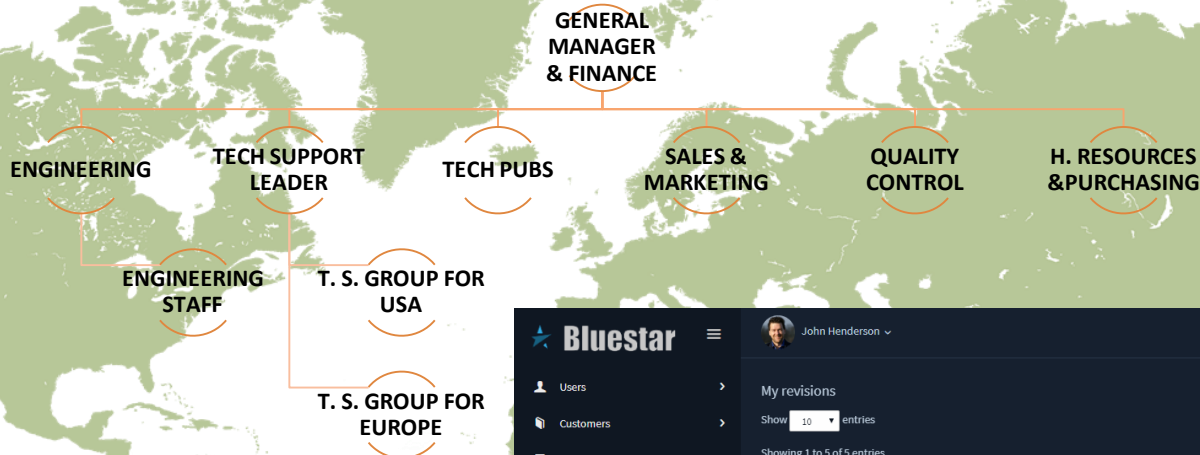
Mexicali MX

Ensenada MX



ORGANIZATION

2020 Organizational Chart

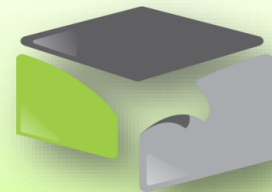


Our Way of Work:

- Cloud and FTP / VPN network access with ENOVIA
- Collaborative engineering tools
- Project management systems
- Integrated Engineering Pool
- Agreements with most prestigious universities in the Region

A screenshot of the Bluestar software interface. The top bar shows the user 'John Henderson'. The left sidebar contains a menu with 'Users', 'Customers', 'PDS', 'Create documents', 'QA', 'Metrics' (highlighted), and 'Project numbers'. The main area is titled 'My revisions' and shows a table of revision entries. The table has columns for 'SEND BY', 'PROJECT', 'UNIT', 'DOCUMENT', 'REVISION', 'REVISION CARD', and 'DETAILS'. The bottom of the interface shows '2018 Bluestar' and navigation buttons for 'Previous', '1', and 'Next'.

CORE COMPETENCIES



Knowledge applied to solutions

CONSULTING

- Project Management
- Regulations and vehicle specification interpretation
- Risks assessment
- Meetings /milestone agenda attending
- Configuration control management
- In flight services / Monument requirements
- Appliance (Insert) standardization
- LOPA generation/editing

PRODUCT CONCEPT

- Requirements and Data management
- Configuration control management
- ILS- Integrated Logistic Support
- Supplier research and evaluation
- Material selection
- Ergonomics
- Testing requirements
- Product sketching and digital mockup

ENGINEERING

- Product Engineering & Decomposition
- Fastener standardization
- Modular/Parametric design
- 3D Mechanic Modeling
- 3D SURFACE Modeling/Flattening
- 2D Drafting, Exploded views
- EO's, Documentation and reports

STRESS AND ANALYSIS

- Stress, Strength and Deformation analysis
- Simulations and FEA
- Structural Interface loads analysis reports
- Comparative Report Analysis

CERTIFICATION COMPLIANCE

- Certification strategy and Management
- Document Data Package integration
- Materials/CoC's Document inspection
- Test plans and reports documentation
- DER and Laboratories coordination
- Specimen Manufacturing
- Conformity documentation and certification

SYSTEMS INTEGRATION

- Electrical loads analysis
- Power Wire harnessing
- Harness Flattening
- Wire Diagram / Wire lists
- HVACRE, Plumbing – Tubing -Draining
- 2D Drafting, BOM

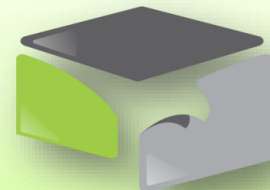
TECHNICAL PUBLICATIONS

- Work Team familiar with all aircraft systems and the aircraft interiors products.
- Work under international standards like ASME, ATA100 iSpec2200, ASD-STE-100, MIL-STD
- Using standard Editors like Hyperlinked PDF MSWord, MS Excel, Adobe PageMaker, 3DVia Composer, Corel, Adobe Illustrator
- CMM / IPL / Illustrations
- Service Buletins
- Technical analysis

AIRWORTHINESS SUSTAINING

MFG COMPETENCIES

Knowledge applied to Tangibles



CNC MILLS CAPACITIES

- Mori Seiki NH5000 DCG/40 Horizontal Milling Machine
- 1 Leadwell V20I
- 4th axis rotary head
- 1 TDC 510 Mini Mill 5th axis rotary head
- 3 Matsuura 500V 20" X 14" X 14" (Rotary)
- 1 Matsuura 510V 20" X 14" X 18.1"
- 1 Matsuura 760VX 32" X 20" X 20" (Rotary)
- 2 Matsuura 800VG 32" X 20" X 20" (12" Rotary)
- 1 Matsuura ES450H 17.7" X 15.7" X 15.7" (Rotary)

SHEET METAL MFG EQUIPMENT

- 1 Muratec Turret Press 25 ton
- 1 Accupress Brake Press 10 foot bed 130 ton
- 1 Accupress Brake Press 8 foot bed 60 ton
- 1 Heager hardware presses
- 1 Enerpac Hydraulic Press 25 ton
- 2 Diacro Rolling Mills
- 1 Pexto Shear
- 1 TruFab Shear
- 1 Niagara Shear 3/16" X 12 ft.

LASERS

- 1 Domino – Rotary axes 360A continuous (without limitation) 31' x 10' x 12' (L, W, H)
- 1 Sylvania 1610 – 5 axis, 150 watt 18" X 18" X 10" (16" Rotary tilt)
- 1 Raytheon – 4 axis, 400 watt 15" X 32" X 10" (13.5" Rotary)
- 1 Raytheon – 4 axis, 400 watt 18" X 18" X 12" (13.5" Rotary)
- 1 Lumonics – 4 axis, 400 watt 24" X 36" X 8"
- 1 Lee Laser Part Marker – 2 axis, 50 watt 24" X 18" X 11"
- 1 ILM - 5 axis, 400 watt 32" X, Y, and Z plus rotary and rotary nozzle

CNC LATHES

- 3 LEAD well T6
- 2 Leadwell T7 8" chuck
- 1 Ameri-Seiki 2 axis turning center 24" dia. turn capacity
- 1 Nakamura-Tome TMC-300 - 2 axis 2.79 bar cap.
- 1 Nakamura-Tome SC300M – 3 axis turning center 30 HP, 12 station, backface turning, 2.79" round collet cap.
- 1 Nakamura-Tome TMC-20 turning center 10 HP, 10 station, 2" bar cap., 11.02" max. workpiece dia.
- 1 Nakamura-Tome SC250M – 3 axis turning center 2" Bar Cap., 6 Live Heads
- 1 Moriseiki 2 axis turning center 2" bar cap

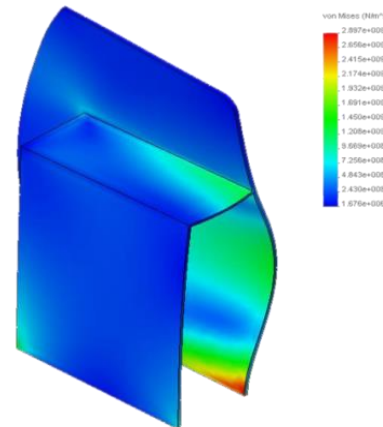


TURNKEY SOLUTIONS

From Idea to Product

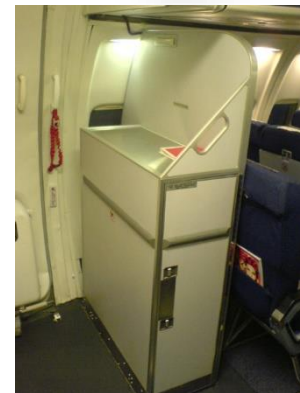


- Product concept & sketching
- Design Engineering & Drafting
- Analysis
- Prototyping
- Drawing Red Mark & Airworthiness sustaining
- Technical writing & Technical publications
- Component maintenance manuals (CMM)
- Service bulletins (SB)
- Field service representation



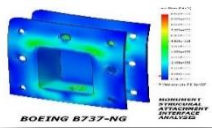
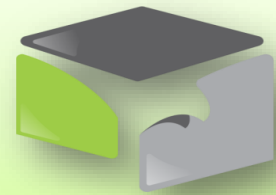
Simulation of a Galley G3 /G6 for a Boeing B737-200 Aircraft

- Galley
- Galley Inserts
- Equipment & Systems
- Structures
- Closets
- Cabinets
- Assemblies

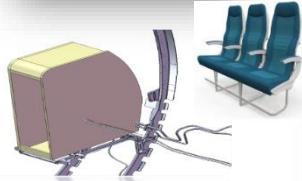


PROJECT SAMPLES

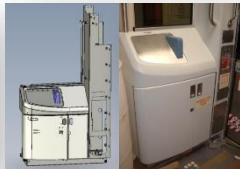
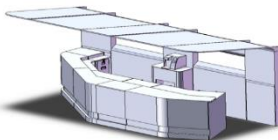
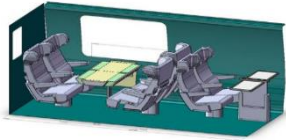
Knowledge applied to solutions



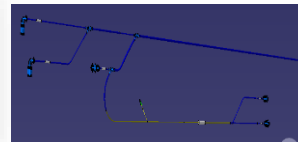
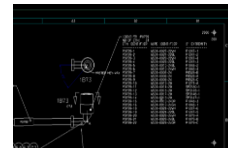
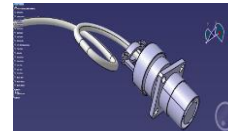
Product Engineering, according Aircraft manufacturer Specifications, customer requirements and airworthiness regulations, under ISO 9001 & AS9100 quality systems



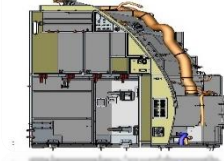
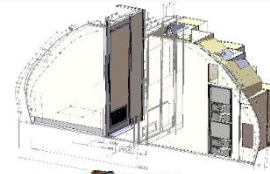
B737, B747, B777, B787



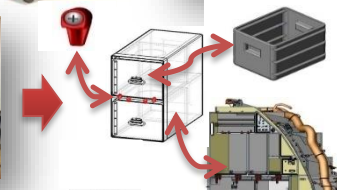
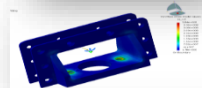
RAILROAD & Transportation
7-Jul-20



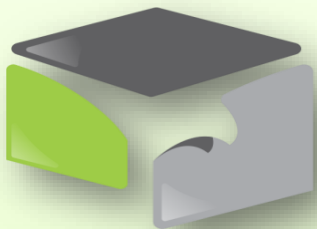
Systems Integration



A320, A330, A350, A380



After Market



INNOCENTRO AEROESPACIAL S.C.

MX Tel: +52 (686) 905 4207

US Tel: +1(760) 802 1327

e-Mail : sales@innocentro.com

Web Site: www.innocentro.com



MEXICO:

Jupiter 182 Parque Industrial
Mexicali I CP 21210



USA:

2310 M.L. King Ave
Calexico, CA 92231

THANKS FOR YOUR TIME