

AEROSYSTEMS

# SAFRAN Aerosystems Mexico

Apr 2023

 SAFRAN



# SAFRAN AEROSYSTEMS MÉXICO



**Start Operations:** 2006

**Products:** Mostly former ZODIAC Products

**Annual Revenue:** \$80M USD

**HC:** 3,069 Employees

Direct Employees: 2,413

Administrative: 656

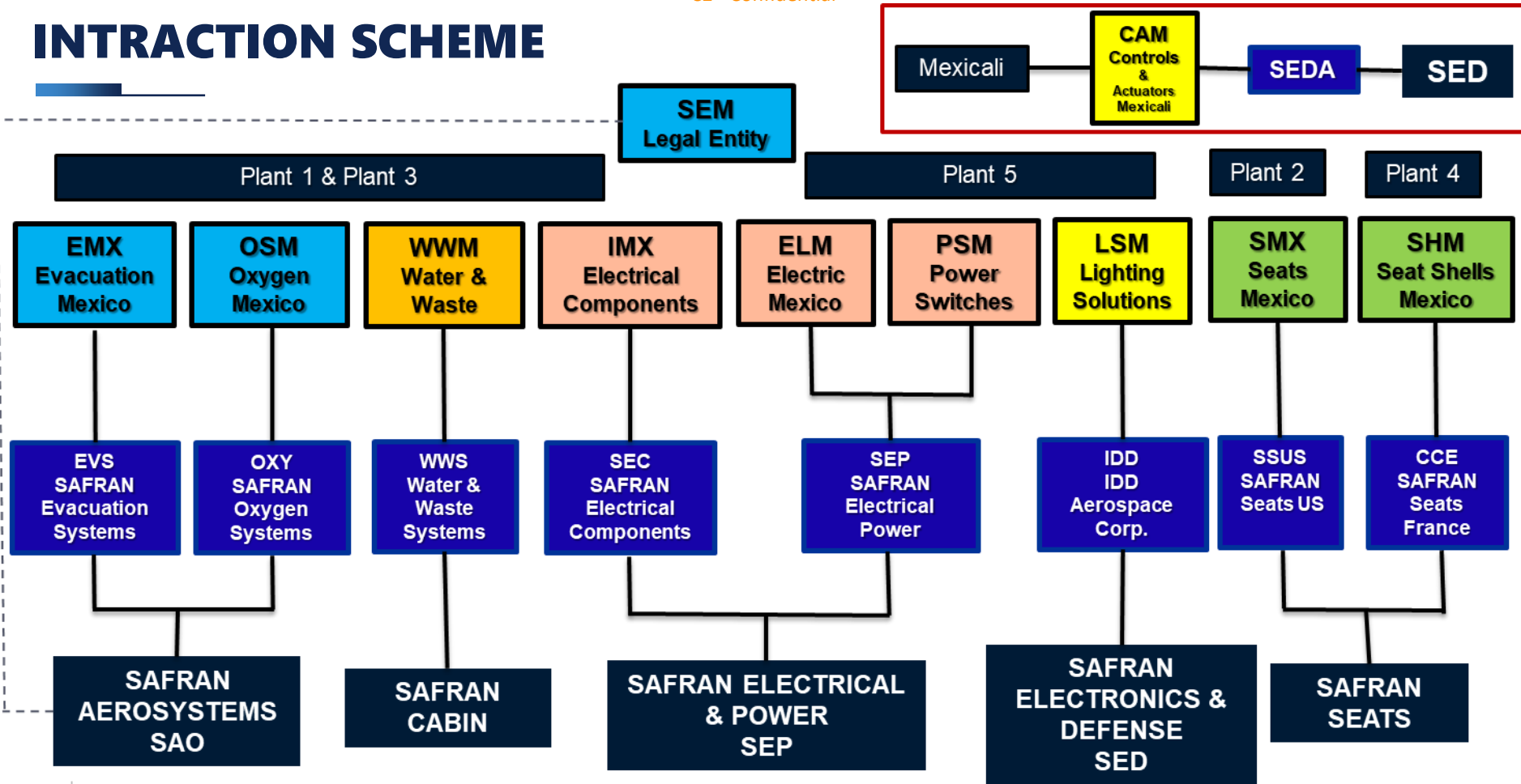
**Buildings:** 5

**Ft2:** +1 M

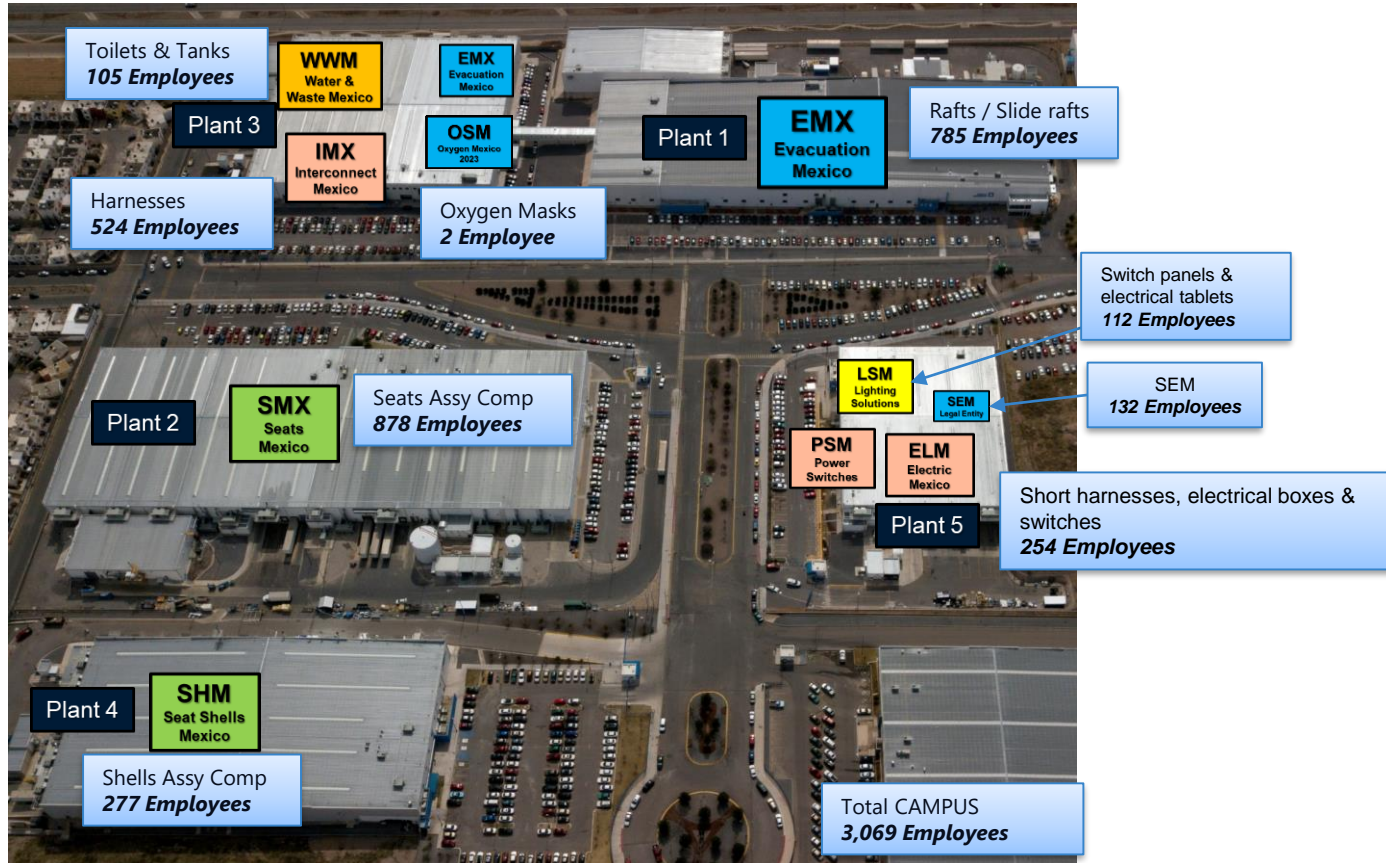
**General Manager:** Jorge Acosta



# INTERACTION SCHEME



# SAFRAN AEROSYSTEMS MÉXICO CAMPUS





# ORG CHART (SEM)



# PLANT MANAGERS (REPORTING UNITS)



**Carlos ESQUEDA**  
Evacuation Systems  
Plant 1 / SAO



**Antonio RAMIREZ**  
Seats  
Plant 2 / SEATS



**Julio LÓPEZ**  
Electrical Components  
Plant 3 / SEP



**Igor Garcia**  
Water and Waste  
Plant 3 / CABIN



**Francisco Soto**  
Oxygen Systems  
Plant 3 / SAO



**Renan Inzunza**  
Seats Shells  
Plant 4 / SEATS



**Alberto RUIZ**  
Power / SEP  
Plant 5 / SEP



**Manuel NAJERA**  
Lighting Solutions  
Plant 5 / SED

# PLANT 1: EVACUATION SYSTEMS / SAO



**199,556 ft2 Building 1**  
**24,532 ft2 Building 3**  
**HC: 785**



## Products:



### TECHNICAL CAPABILITIES

Design	Heat Seal
Cutting	Thermobonding
Sewing	Cemented
Assembly	Test Inflations

# PLANT 2: SAFRAN SEATS US / SEATS



**182,285 K ft2**

**HC: 878**



## Products:



### TECHNICAL CAPABILITIES

Design	Machining
Sheet Metal	Powder Coat
Spot Weld	Chemical
Plastic Thermoforming	Fatigue Testing

# PLANT 3: WATER AND WASTE / CABIN



**74,568 ft<sup>2</sup>**  
**HC: 105**



## Products:



### TECHNICAL CAPABILITIES

Design	Autoclave Cure
Bonding	Winding
Hand layup	ATP Test
Assembly	Composites
Chemicals	

# PLANT 3: ELECTRICAL COMPONENTS / SEP



**48,534 ft<sup>2</sup>**

**HC: 524**



## Products:



### TECHNICAL CAPABILITIES

Harnesses

Tube Bending  
& Welding

Electrical Assembly

Anodize and Teflon  
Coating

# PLANT 3: OXYGEN SYSTEMS / SAO



**2,690.98 ft<sup>2</sup>**

**HC: 1**



## Products:



### TECHNICAL CAPABILITIES

Oxygen mask test

Strength test

Inhalation / Exhalation test

Performance test

# PLANT 4: SEAT SHELLS / SEATS



**121,000 K ft2**

**HC: 231**



## Products:



### TECHNICAL CAPABILITIES

Design	Composites
CNC Machining	Lay Up
Assembly	Painting
Fill and Fair	Decor Applications
Autoclave cure	Presses

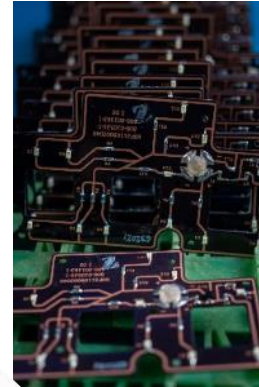
# PLANT 5: LIGHTING SOLUTIONS / SED



**37,000 ft2**  
**HC: 112**



## Products:



### TECHNICAL CAPABILITIES

Serigraphy	CNC Machining
Assembly	Electronic component welding
Painting	Chemical etching (PCBA)

# PLANT 5: ELECTRICAL & POWER / SEP



**25,000 ft<sup>2</sup>**

**HC: 147**



## Products:



### TECHNICAL CAPABILITIES

Wiring Harnesses	Big gauge crimper
Mechanical assembly	Soldering
Electrical test	Test bench

# PLANT 5: POWER SWITCHES / SEP



**20,000 ft<sup>2</sup>**

**HC: 107**



## Products:



### TECHNICAL CAPABILITIES

Switches assembly	Soldering operations
Frames machining	Clinch process
Riveting	

**POWERED  
BY TRUST**