

# EKK EAGLE INDUSTRY MEXICO



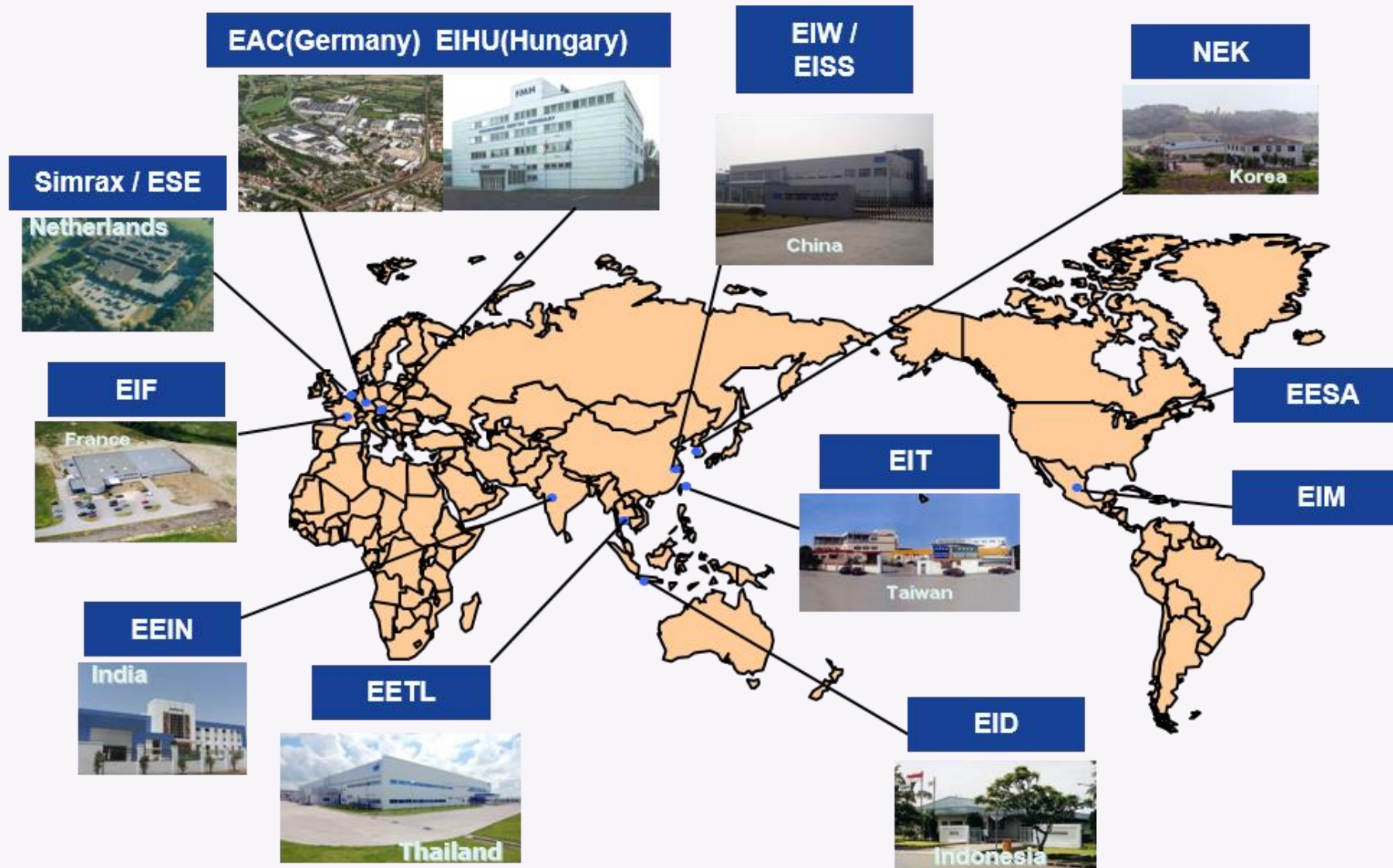
Company Overview.  
November 2022

PERFECTION IN MOTION

# CORPORATE ENTITY DETAILS

**Eagle Industry Co., Ltd. (EKK)** was originally formed as the mechanical seal division of Tokyo based seal company NOK Corporation and became independent in 1964, with a continuing collaborative relationship with NOK.

A publicly traded company today on the Tokyo Stock Exchange (First Section), EKK is a \$1.4 billion USD global leader in sealing solutions and fluid management components for all major industries and customers.





# Parent Corporate Profile

*Company Name*

**Eagle Industry Co., Ltd. (EKK)**



PERFECTION  
IN MOTION

*Established*

**October 1, 1964**

*Representative*

**Tetsuji Tsuru; Representative Director, President**

*Headquarters*

**Shiba Park Bldg. B14F, 241 Shibakoen, Minato ku, Tokyo 105  
8587, Japan**

*Capital*

**10,490,981,500 yen**

*Listing*

**Tokyo Stock Exchange (First Section)**

*Securities Code*

**6486**

*Number of  
Employees*

**6,507 Consolidated**

*Business  
Description*

**Manufacturing and marketing of mechanical seals, special valves,  
plant devices, marine related products, bellows devices; and related  
installation work**





# Mexico (Manufacturing) Corporate Details

*Company Name*

**EKK Eagle Industry MEXICO S.A. de C.V. (EIM)**

*Established*

**October 1, 2012 (SOP ; June 2014)**

*Ownership*

**Eagle Industry Co., Ltd. 99%, EKK Holdings America 1%**

*Location*

**Av. Eje central 209, Logistik , Villa de Reyes, San Luis  
Potosi, CP79526**

*Capital*

**720 million MXN**

*President*

**Kato Takenori**

*Sales Manager*

**Adan Romo**

*Business  
Description*

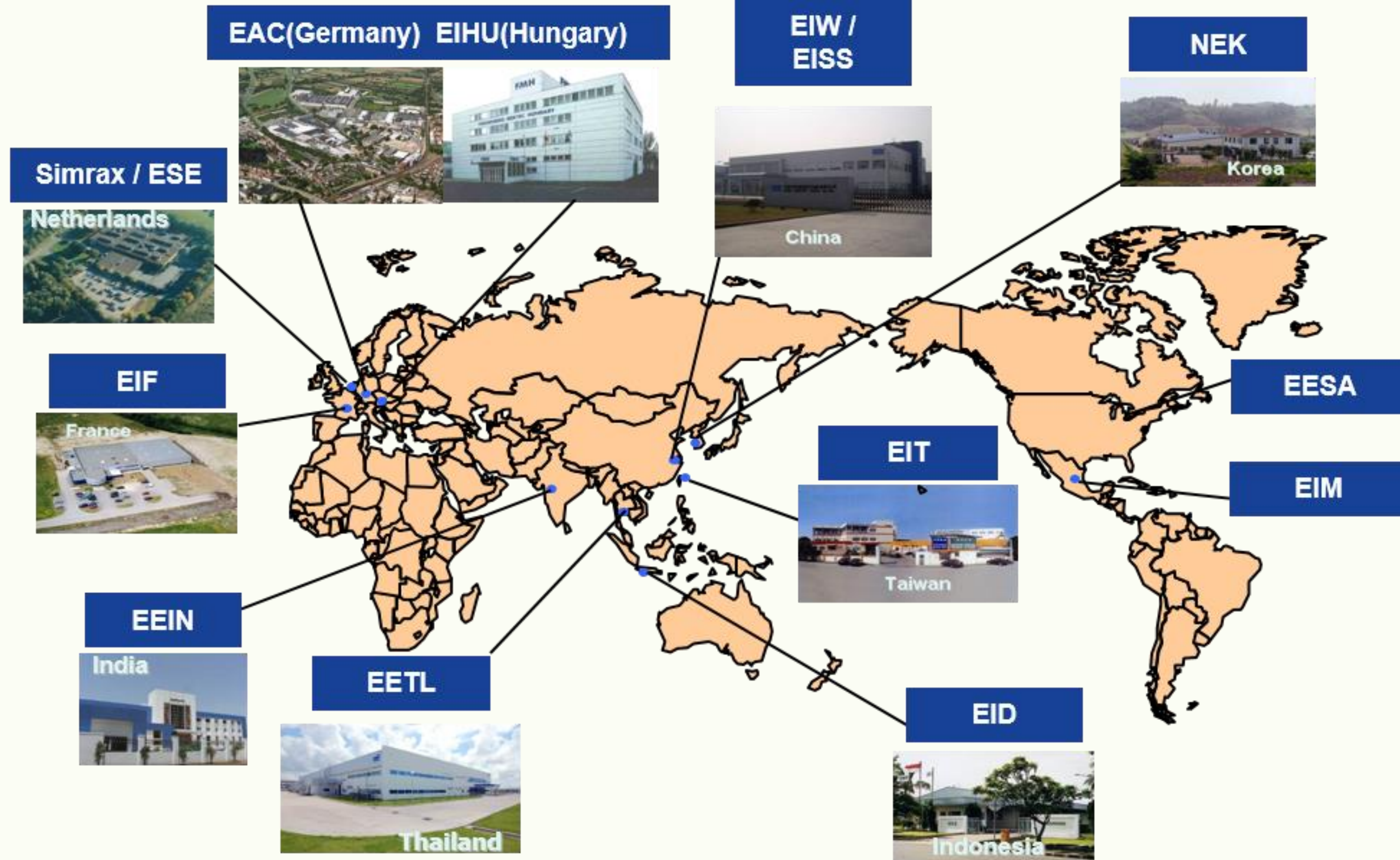
**Manufacturing of solenoid and control valves for  
automotive**



PERFECTION  
IN MOTION







# EKK Worldwide Manufacturing Presence



# Product Overview by Market Segment



## AUTOMOTIVE AND CONSTRUCTION INDUSTRY

- Mechanical / lip seals
- Actuators
- Control valves
- Pulsation dampers
- Floating seals



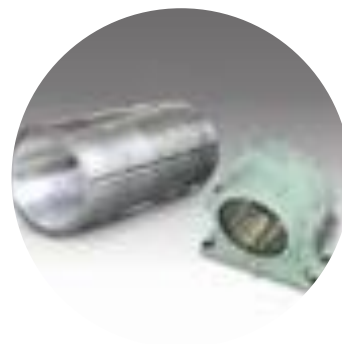
## GENERAL INDUSTRY & ENERGY

- Mechanical seals
- Gas lubricated seals
- Control valves



## MARINE

- Mechanical seals
- Bearings
- Accumulators
- Minilators



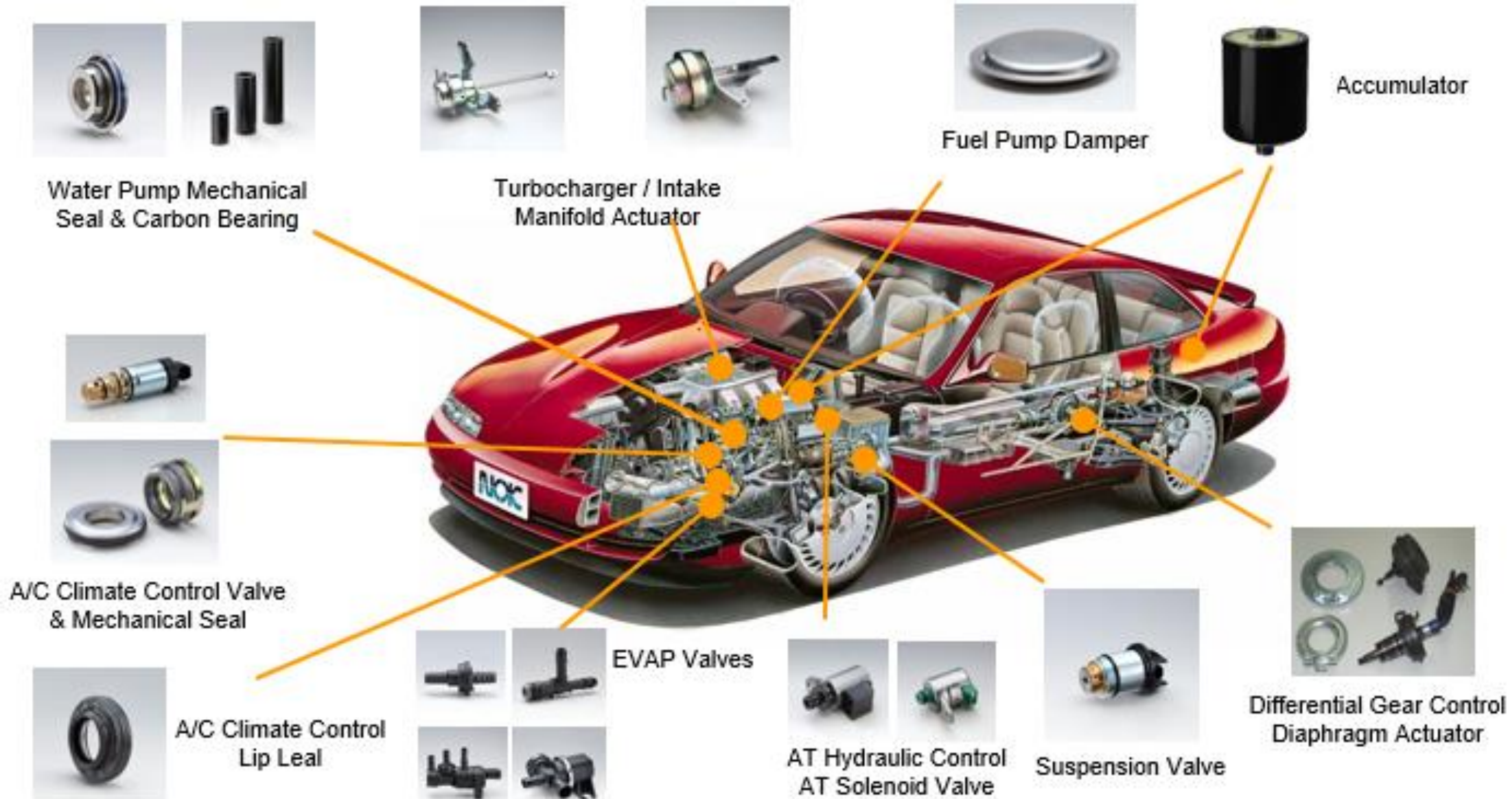
## AEROSPACE

- Mechanical seals
- Metal duct bellows
- Labyrinth / brush seals
- Metal Seals





# AUTOMOTIVE PRODUCT APPLICATIONS



# EIM Certifications



ISO 9001 : 2015



IATF 16949:2016



ISO 14001 : 2015



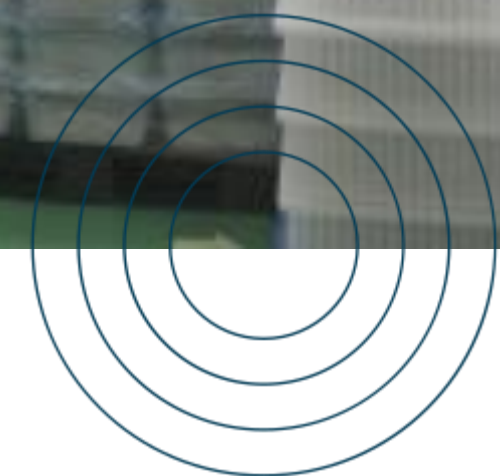


# EIM Manufacturing Capabilities

ASSEMBLY







# EIM Manufacturing Capabilities

ASSEMBLY

PERFECTION IN MOTION





# EIM Manufacturing Capabilities

CNC



CINCOM L20X (27 MACHINES)



CINCOM A20 (27 MACHINES)



CINCOM L12 (3 MACHINES)



CINCOM GN 4200 (9 MACHINES)

# EIM Manufacturing Capabilities

## Grinding

INFED TYPE  
(3 MACHINES)







# EIM Manufacturing Capabilities

CNC

PERFECTION IN MOTION



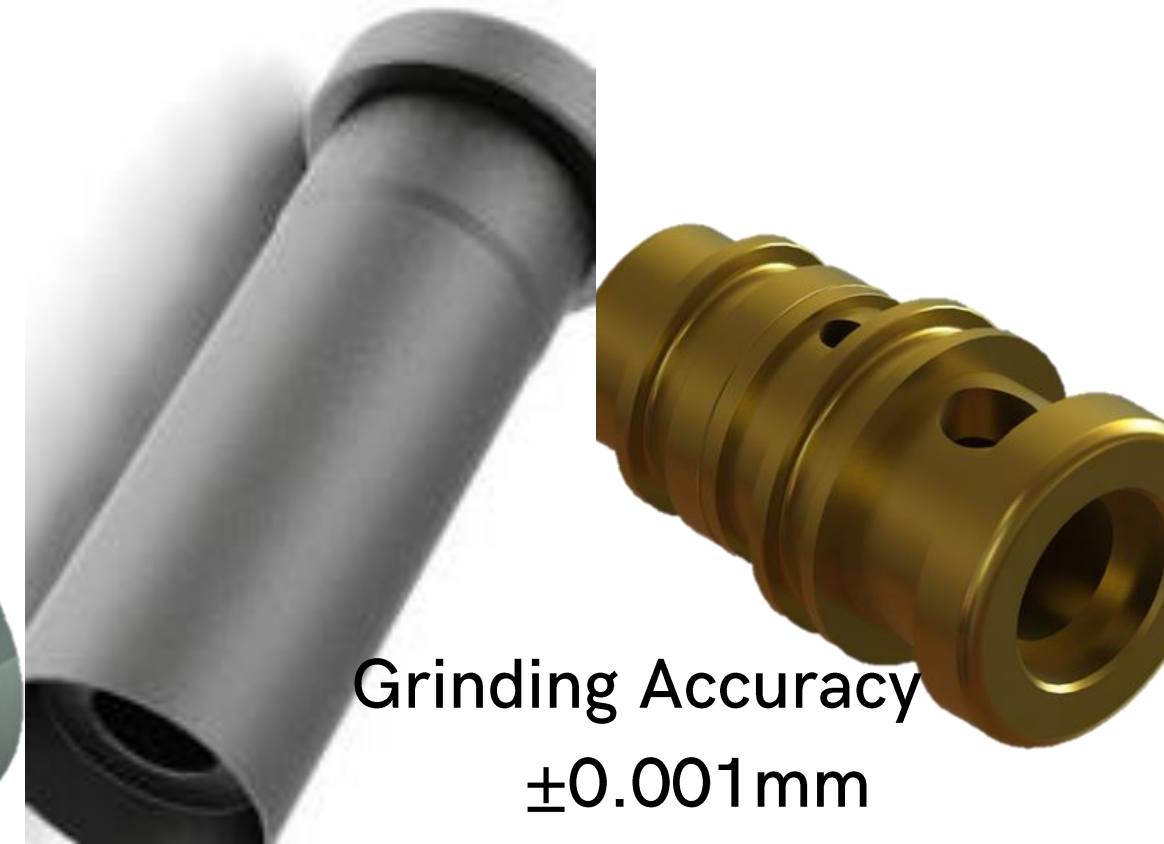


# EIM Manufacturing Capabilities

Machined Components



Machining Accuracy  $\pm 0.003\text{mm}$



Grinding Accuracy  
 $\pm 0.001\text{mm}$



Grinding  
Accuracy  
 $\pm 0.001\text{mm}$



Machining Accuracy  $\pm 0.003\text{mm}$



Grinding Accuracy  
 $\pm 0.001\text{mm}$



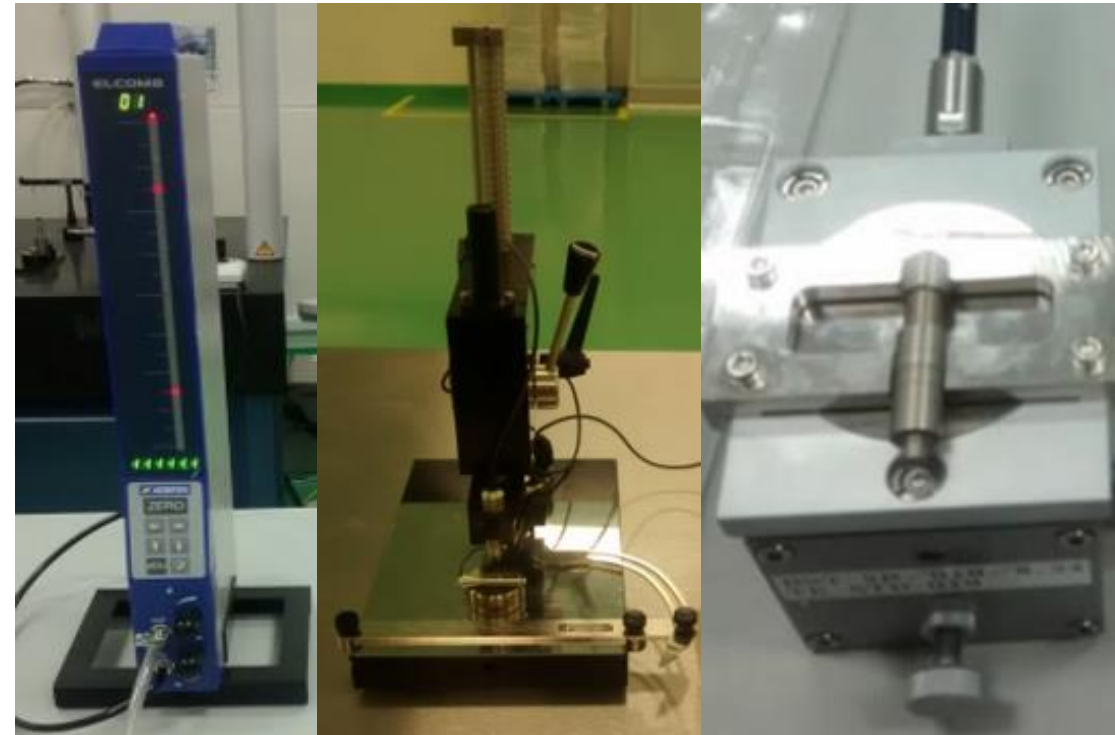
# EIM Manufacturing Capabilities

Components inspection

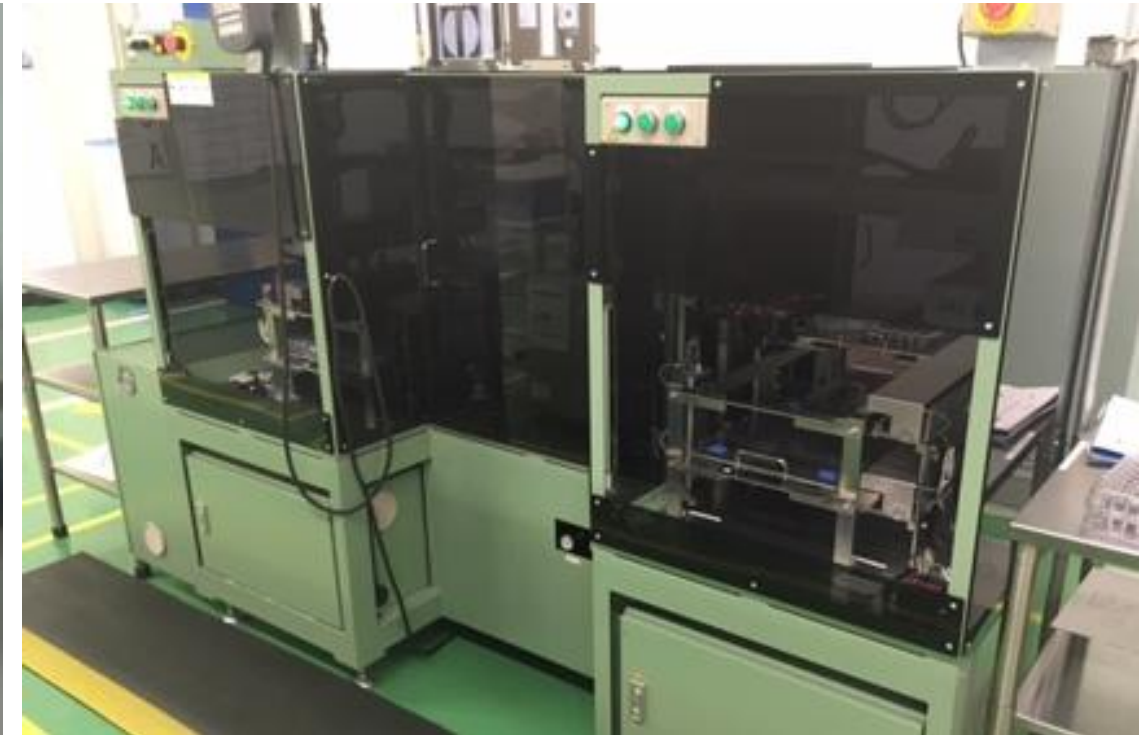
---



Manual / Visual



Measurement



Automatized





# EIM Manufacturing Capabilities

Anodizing

Anodizing type 3 (Hard) and 2.  
Semi automatized line.

PERFECTION IN MOTION







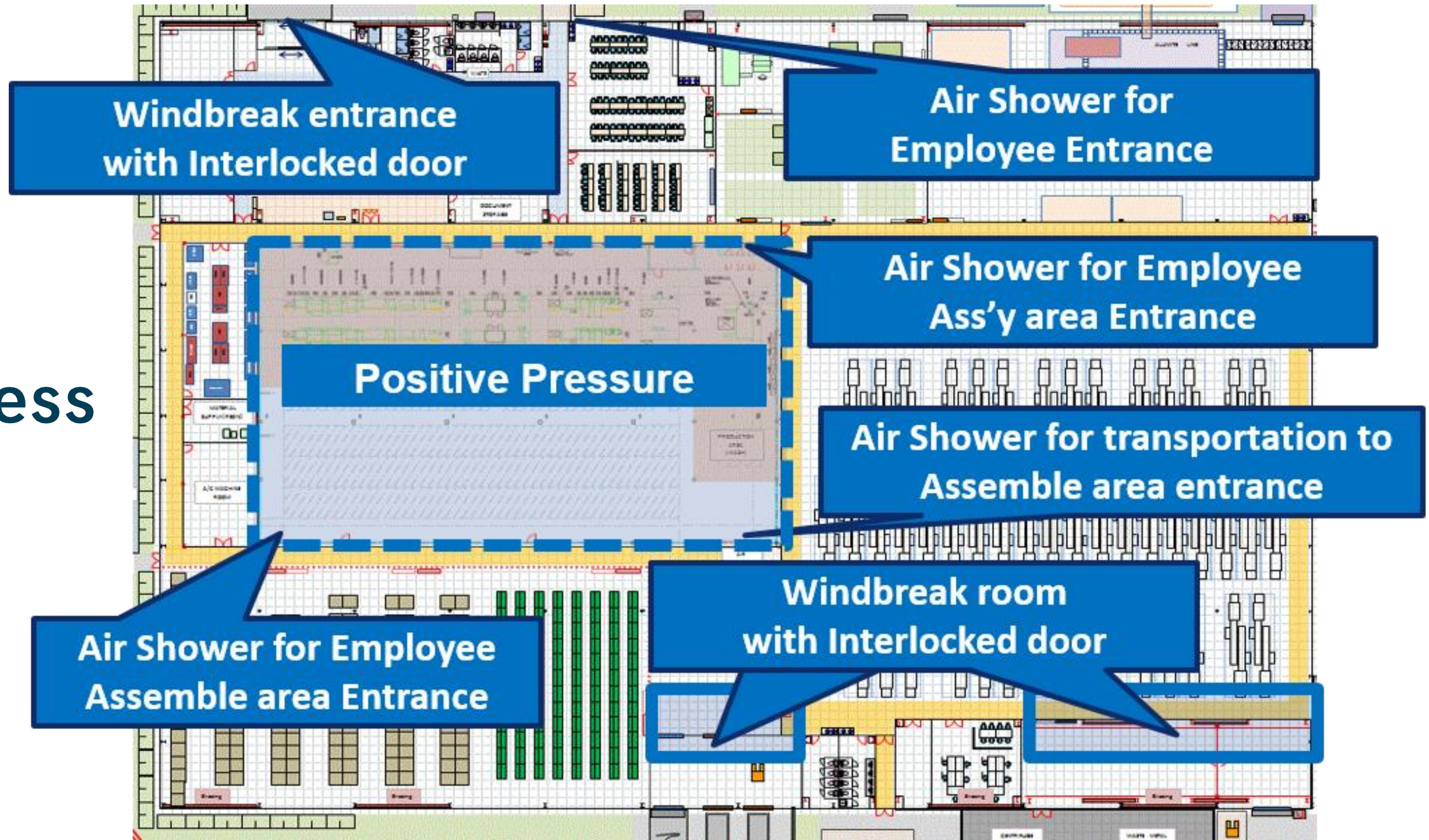
PERFECTION IN MOTION



**INNOVATING  
IN  
DESIGN AND  
MANUFACTURING  
OF  
TRAYS  
FOR THE INDUSTRY**



# EIM Cleanliness Control





# EIM Cleanliness Control

Staff Air Shower



Positive Pressure

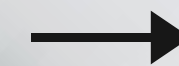


Materials Air shower



PERFECTION IN MOTION





## AT/CVT Solenoid

Solenoid valves for hydraulic control of automatic transmissions and continuously variable transmissions (CVT)

- Improves fuel consumption by making the transmission multi-stage or non-stage.

EIM  
Produced  
parts





## Control Valve

Pressure control valves for automotive air-conditioning variable displacement compressors

- Controls compressor pressure and rotational load to improve the fuel consumption.

**EIM**  
**Produced**  
**parts**



# *Jatco*

*The mission is passion.*

Current  
Automotive  
Customers

**GTACG**

 **MAGI**





**EAGLE INDUSTRY**

**iTHANK YOU!**

**MR. ADAN ROMO**  
**Supply Chain Manager**

T. +52 444.101.3098 Ext. 1460

M. +52 1 444 174 7673

adan.romo@ekkeagle.com

**MR. FERNANDO SILVA**  
**Supply Chain Specialist**

T. +52 444.101.3098 Ext. 1615

M. +52 1 444 130 4825

fernando.silva@ekkeagle.com