



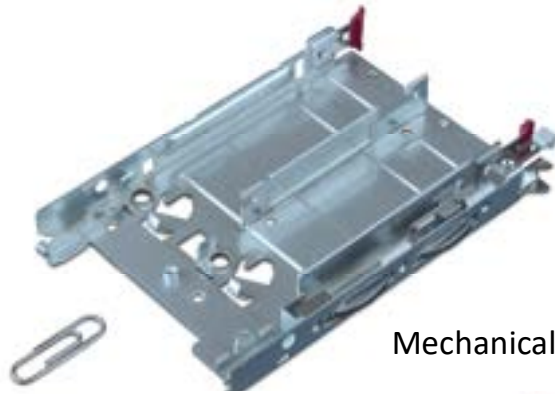
CONNOR
MANUFACTURING
SERVICES

THE ART OF PRECISION

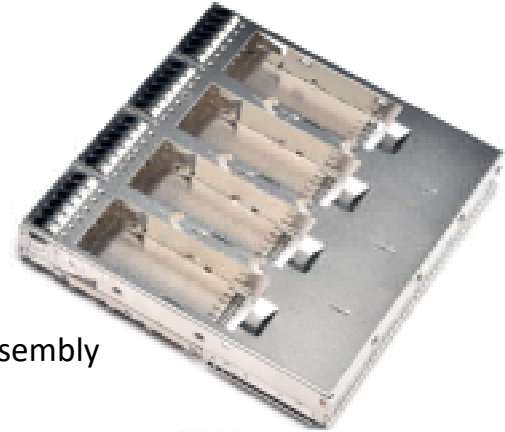
**Thin Gage 0.05mm to Thick Gage 3.5mm
Precision Stamped and Assembled parts for
Consumer Electronics, Data Communication , Wireless
Devices, Lifestyle , Etc application**

Capabilities

- Precision Metal Stamping
- Reel to Reel Stamping
- Transfer Stamping
- Deep Draw
- Indie Assembly
- Tool Design and Fabrication
- Rapid Prototyping
- Design for X
- State of Art Equipment
- Various Welding Processes
- Mechanical Assembly



Mechanical Assembly



Extruded Stamp Tube



Battery Contacts & Spring Fingers



EMI Shield & Brackets





CONNOR[™]

MANUFACTURING
SERVICES

THE ART OF PRECISION

Material Type

- Stainless Steel , Aluminum, Nickel Silver, Copper, Beryllium Copper, Galvanized Steel, HSLA Steel, Titanium Etc

Finishing

- Nickel Plating, Zinc Plating, Silver Plating, Gold Plating, Anodizing, Powder Coating, Spray Painting, Deburring , Etc

Deep Draw Components for Consumer Electronics, Renewable Energy, Automotive, Medical Devices





CONNOR
MANUFACTURING
SERVICES

THE ART OF PRECISION
Global Locations

Oregon USA
Johor Malaysia
Suzhou, Kunshan China
Monterrey, Mexico

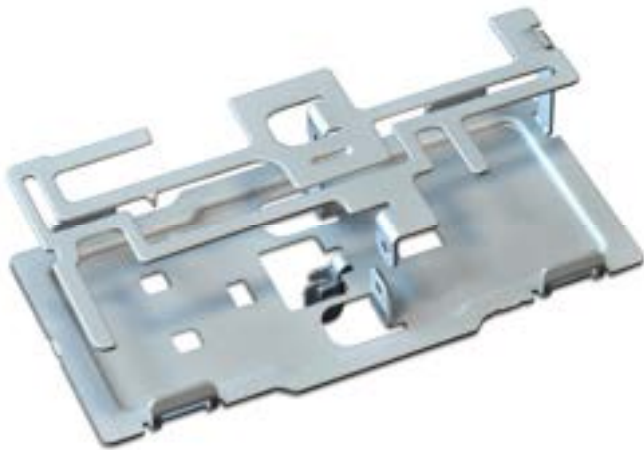
Automotive Electric Vehicle(EV),
Battery Management System (BMS), Energy Storage System (ESS)



EV Charger Cover



EV Charing Adaptor



Infotainment:
& Antenna





CONNOR[™]

MANUFACTURING
SERVICES

THE ART OF PRECISION

Machine Type

25 Tons to 500 Tons Stamping Press

Integrated Transfer System

Reel to Reel Stamping

Robotic Handler



Power Train and Interior



Wire Harness



Safety & Sensors



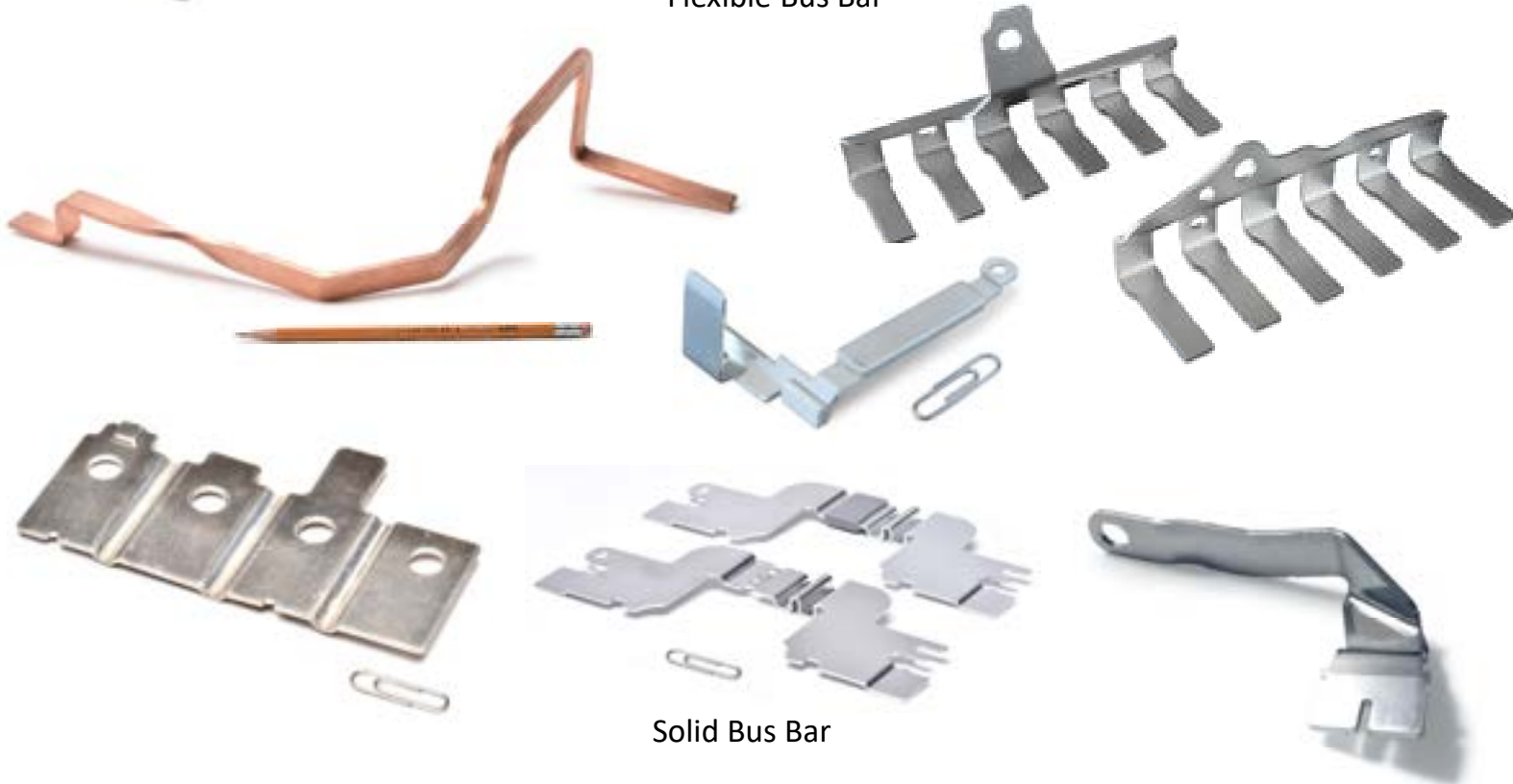
CONNOR
MANUFACTURING
SERVICES

THE ART OF PRECISION

Electric Vehicle (EV) Bus Bar
Battery Management System (BMS) Busbar
Energy Storage System Bus Bar



Flexible Bus Bar



Solid Bus Bar