



SCHERDEL WIESAUPLAST SALES DE MEXICO S. DE R.L. DE C.V.

THE SCHERDELGROUP / SCHERDELGROUPE

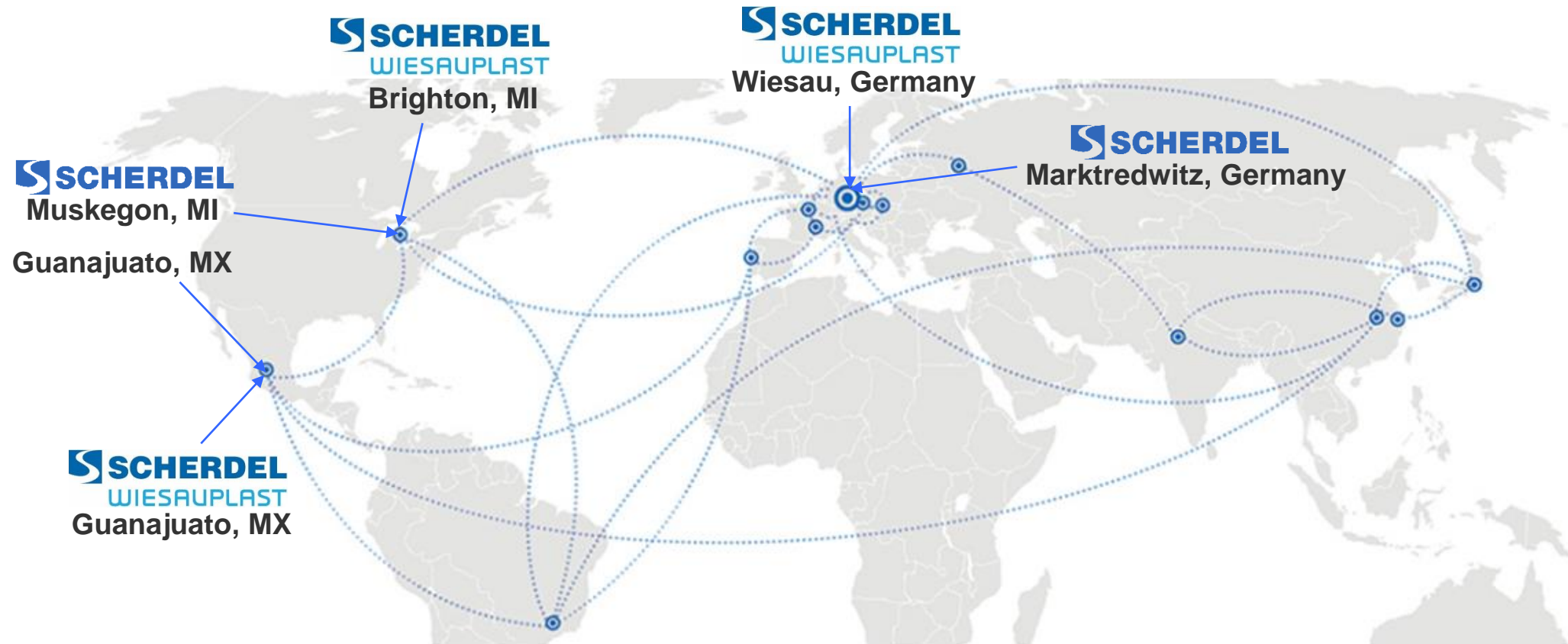
San Jose Iturbide, Guanajuato, MX, 20. April, 2022

COMPANY LOCATIONS

WORLDWIDE MANUFACTURING LOCATIONS

WORLDWIDE MANUFACTURING LOCATIONS

IN THE HEART OF EUROPE – AT HOME IN THE WORLD



Guanajuato, Mexico



Wiesau, Germany



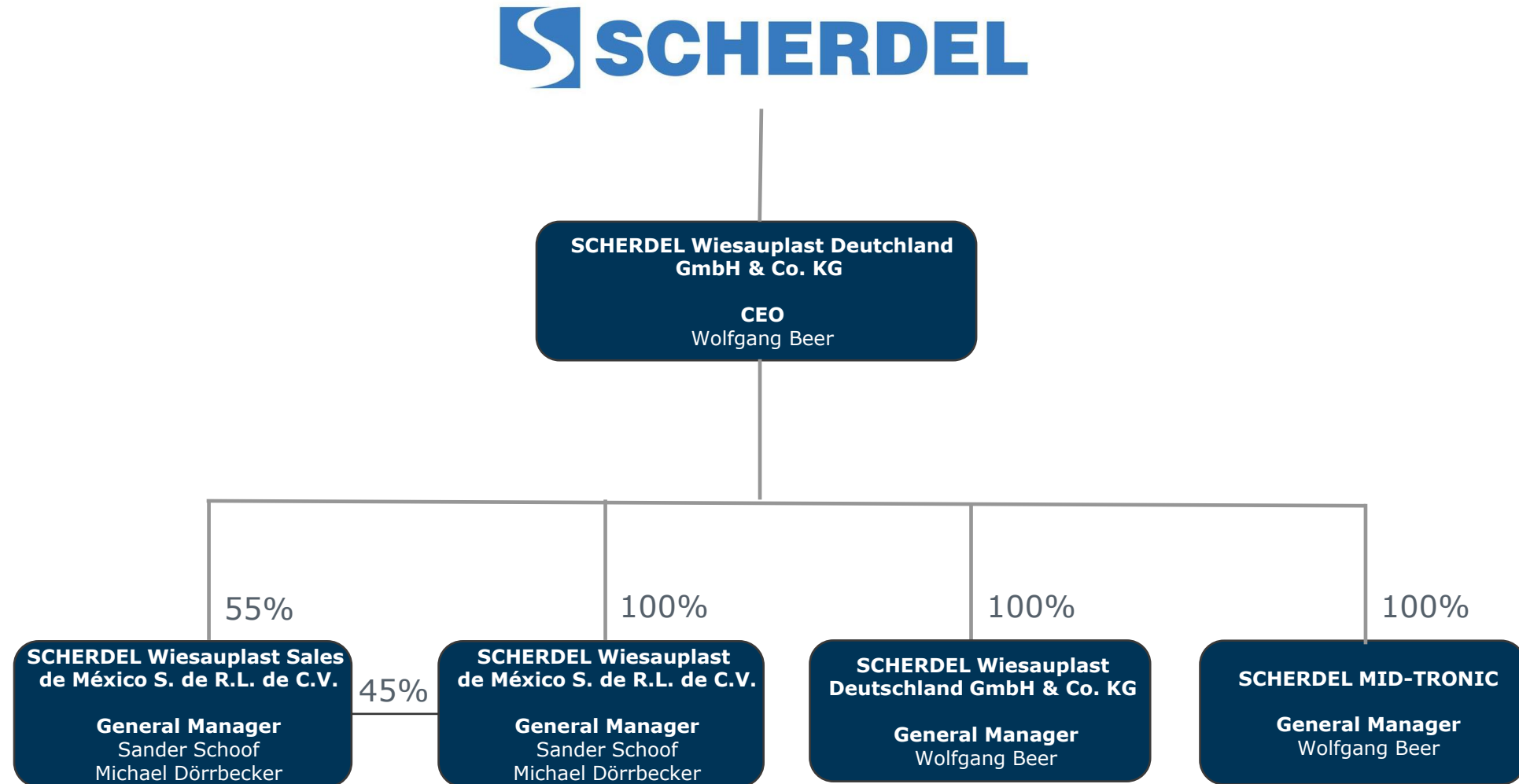
WIESAUPLAST GROUP

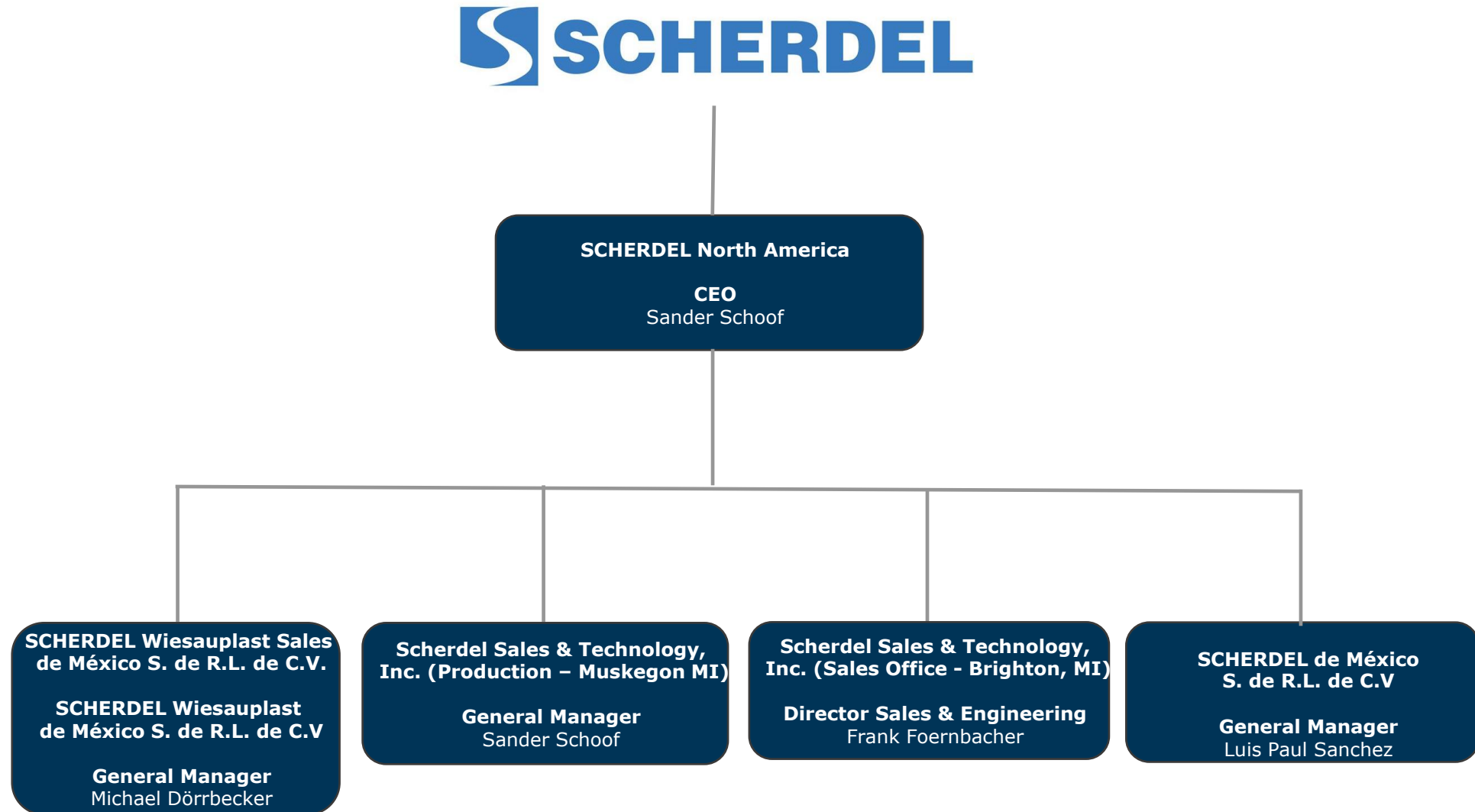
COMPANY OVERVIEW

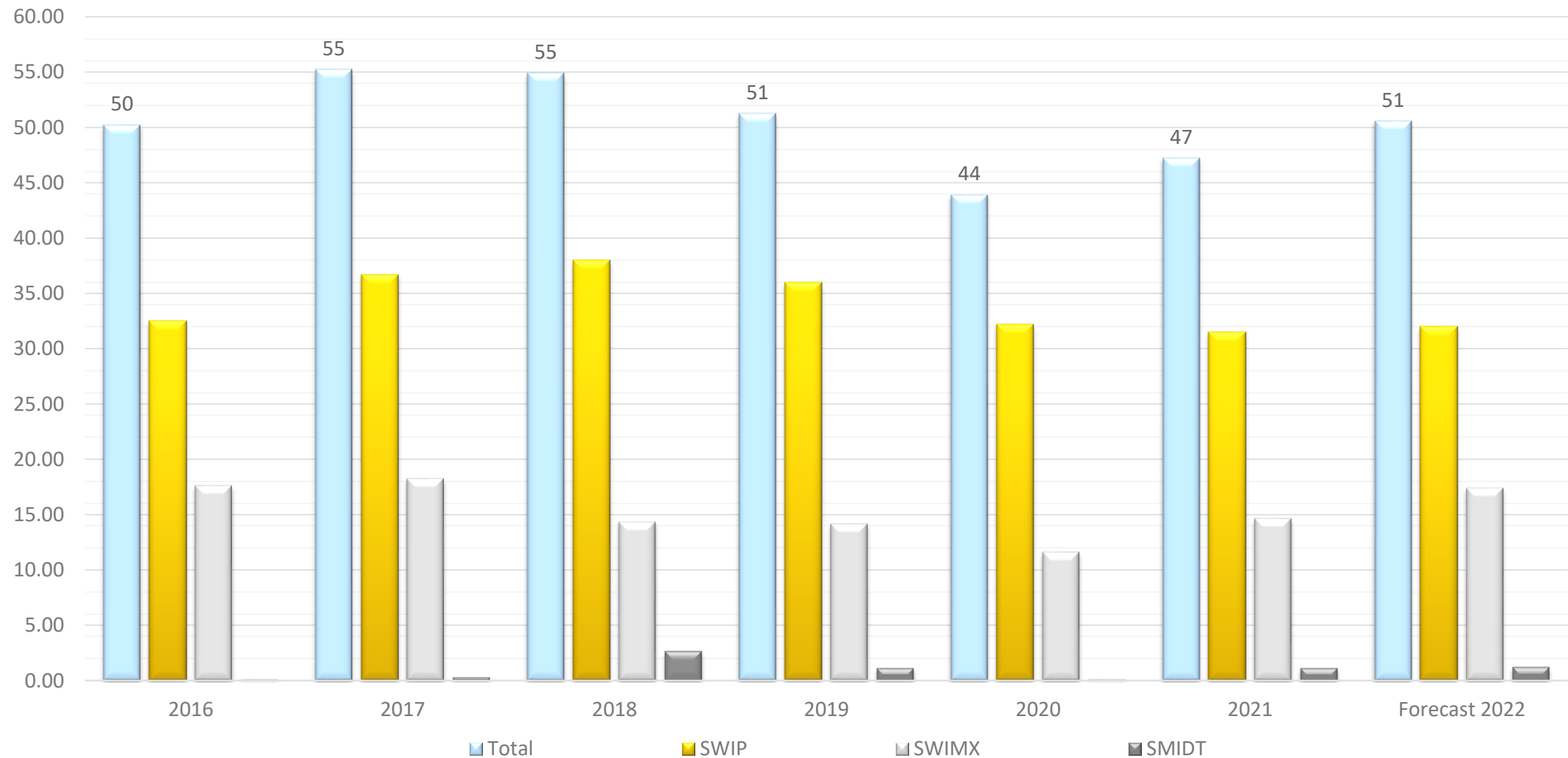
SCHERDEL WIESAUPLAST GROUP

| | |
|------------------|------------------------------------|
| Founded | 1958 |
| Production space | 40.000 m ² (WIP + WIMX) |
| Locations | Wiesau/Germany + Guanajuato/Mexico |
| Employees | 570 (WIP + WIMX) |
| Turnover 2021 | 47 Mio. € (WIP + WIMX) |
| CEO | Wolfgang Beer |
| Owner | SCHERDEL Group (2022) |



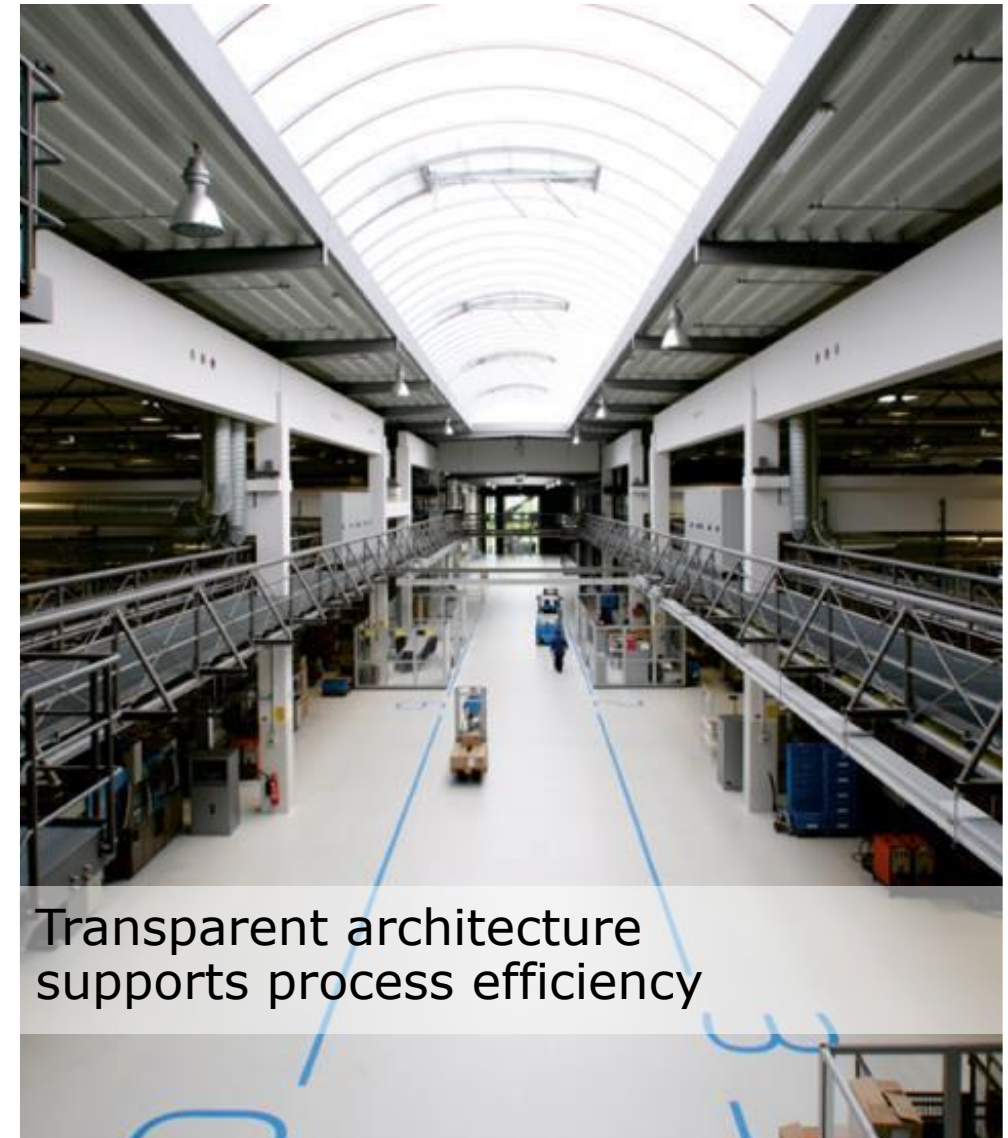






GLOBAL SUPPLY – EUROPE

- World leader in the area of sensitive PET safety parts for braking systems & PPS parts for Thermal Management Applications
- Certified in accordance with IATF16949 and ISO14001
- Classified as Strategic Supplier (Continental)
- Hi-Tech, Multi component and Insert Injection Molding
- Latest automation technology
- Assembly and secondary operations
- In-house tool shop



Transparent architecture
supports process efficiency

GLOBAL SUPPLY – EUROPE

SCHERDEL Wiesauplast: Wiesau, Germany –
European HQ and Production Location

SCHERDEL MID-Tronic Wiesauplast Location



GLOBAL SUPPLY – EUROPE

SCHERDEL MID-TRONIC integrates plastics and electronics:

Target of SMID-Tronic is to develop 3D solutions for electronic applications, typically based on plastic parts.



“Plastic meets Electronics”



GLOBAL SUPPLY – AMERICA

| | |
|------------------|--|
| Founded | 2007 |
| Production space | 6,800m ² |
| Location | San Jose Iturbide Parque Opción, Guanajuato / Mexico |
| | 100% Wiesauplast production plant |
| Employees | 250 |
| General Manager | Michael Dörrbecker |



GLOBAL SUPPLY – AMERICA

- High-quality injection molding in accordance with the general SCHERDEL Wiesauplast standards (29 injection machines in the range of 40-400 tons, including two with 2K capabilities)
- 5 welding devices (Bielomatik) and, 10 testing devices (Innomatec)
- Engineering support SCHERDEL Wiesauplast – Germany for MoldFlow analysis
- Engineering support for tool design and feasibility analysis (four SIEMENS NX CAD-CAM stations)
- SCHERDEL Wiesauplast de México is certified in accordance with IATF6949 and ISO14001



TECHNICAL CAPABILITIES

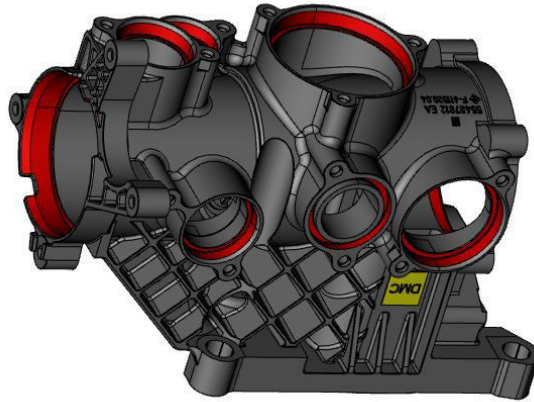
High capabilities for serial production on safety parts, function require certain tooling knowledge and CAE analysis to achieve tight tolerances, roundness, and several form tolerancing relations between a certain number of functional areas.

Single & tandem valve body for brake booster, as well a new generation for iBooster.



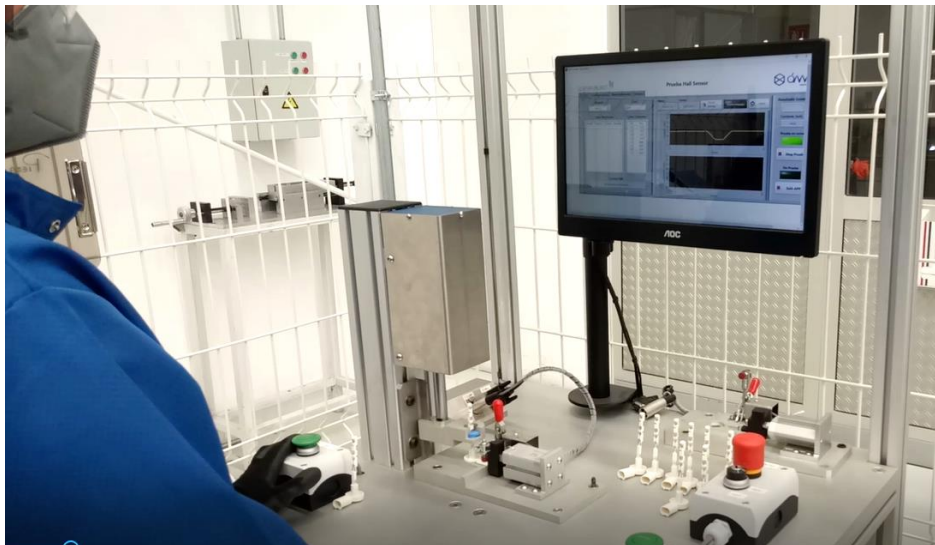
TECHNICAL CAPABILITIES

- SWIMX provides technical support on part development “metal to plastic”. The demand for conversions is constantly increasing as more and more companies seek ways to reduce weight, improve efficiency, and save on cost.
- Current products for TMM (Thermal Management Module) and Breaking components, made by special engineering materials >PPS-GF<.



TECHNICAL CAPABILITIES

- Special ESD integration for new FLI with Hall sensors on Reservoirs



GLOBAL SUPPLY – AMERICA

Guanajuato, Mexico

- World-class facility
- Hyper-precision processing
- Injection & insert molding
- Automated production
- Complete assembly & secondary operations



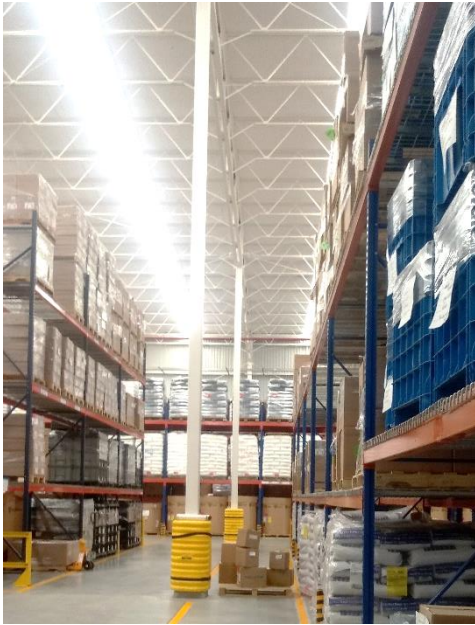
GLOBAL SUPPLY – AMERICA

- Mold maintenance and repair
- Mold making know how (Specialized training in HQ Wiesau, Germany)
- 2 CNC Machine (3 & 5 axis)
- 1 Wire cutting EDM machine
- 1 Die sinker EDM machine
- 2 Laser welding machine
- 2 Grinding machines
- 2 Milling machine
- 1 Lathe machine



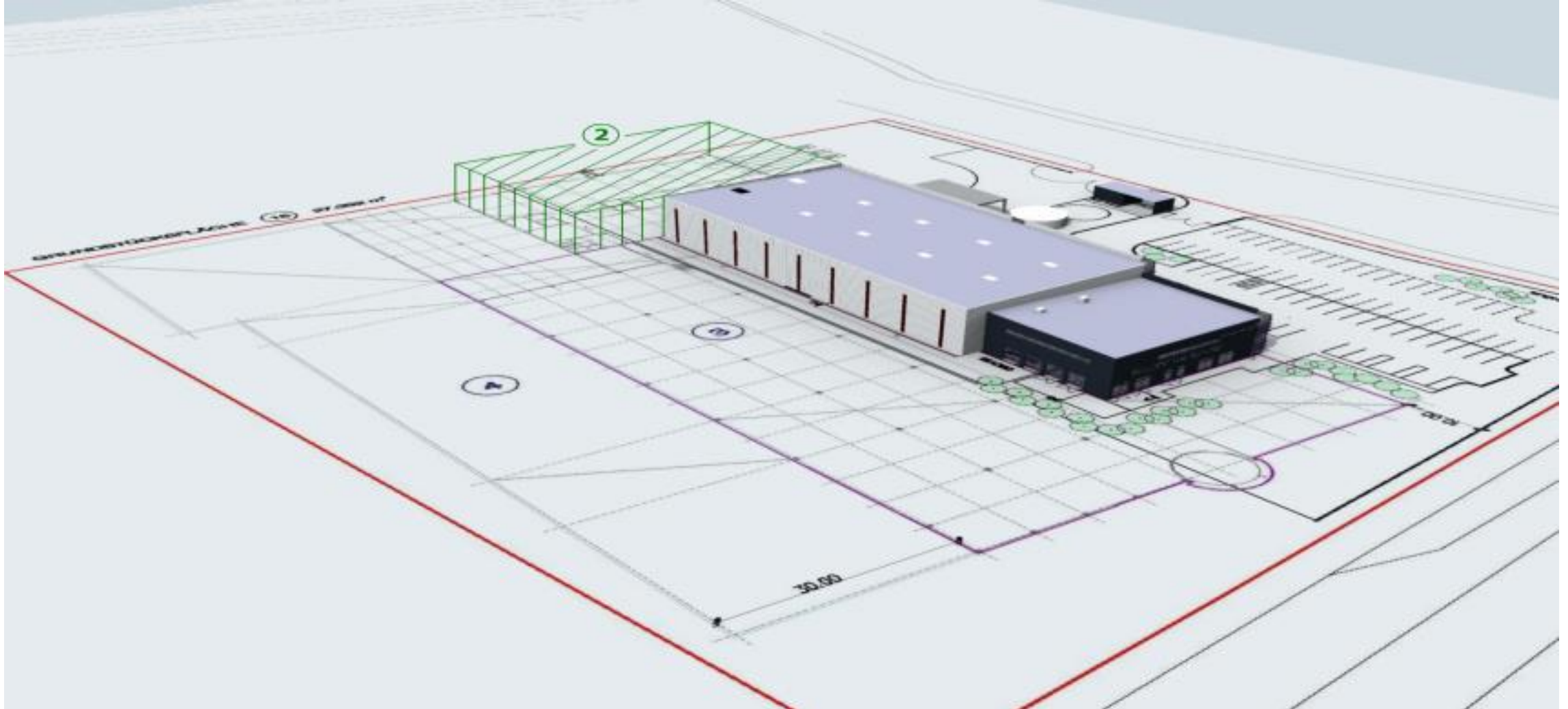
COMPANY OVERVIEW

MEXICO LOCATION



COMPANY OVERVIEW

MEXICO LOCATION – EXPANSION PLANS



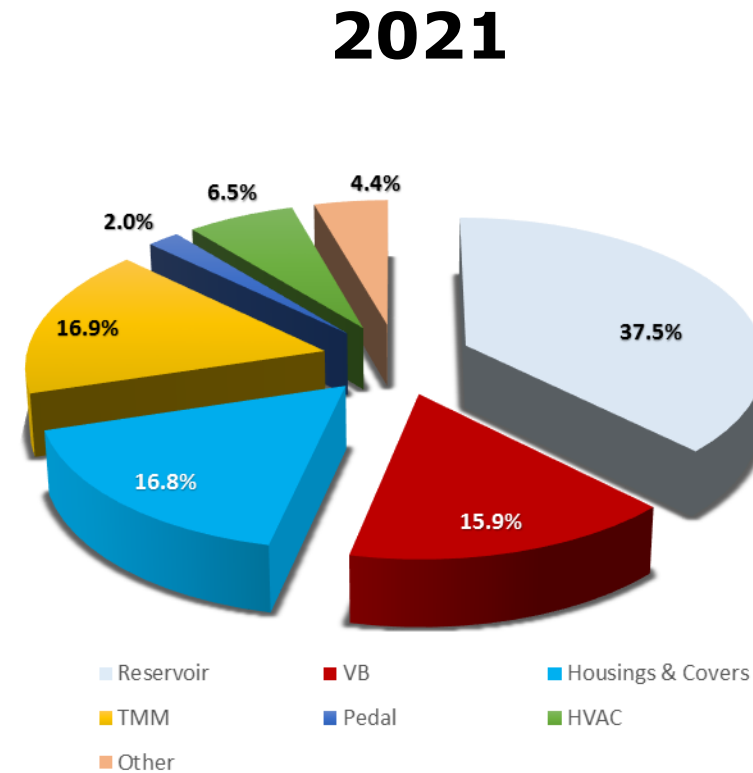
BUSINESS PARTNERS

MEXICO LOCATION



| Customer Distribution 2021 | Share in% |
|----------------------------|-----------|
| Bosch | 32.1% |
| CAS | 22.4% |
| Schaeffler | 16.9% |
| ZF | 10.7% |
| BHTC | 6.5% |
| Vitesco | 3.9% |
| Hella | 3.5% |
| Webasto | 2.1% |
| Preh | 1.7% |
| FTE/Valeo | 0.2% |
| | 100% |

| Products Distribution 2021 | Share in% |
|----------------------------|-----------|
| Reservoir | 37.5% |
| VB | 15.9% |
| Housings & Covers | 16.8% |
| TMM | 16.9% |
| Pedal | 2.0% |
| HVAC | 6.5% |
| Other | 4.4% |
| | 100.0% |



Specialty Engineering Material Processing

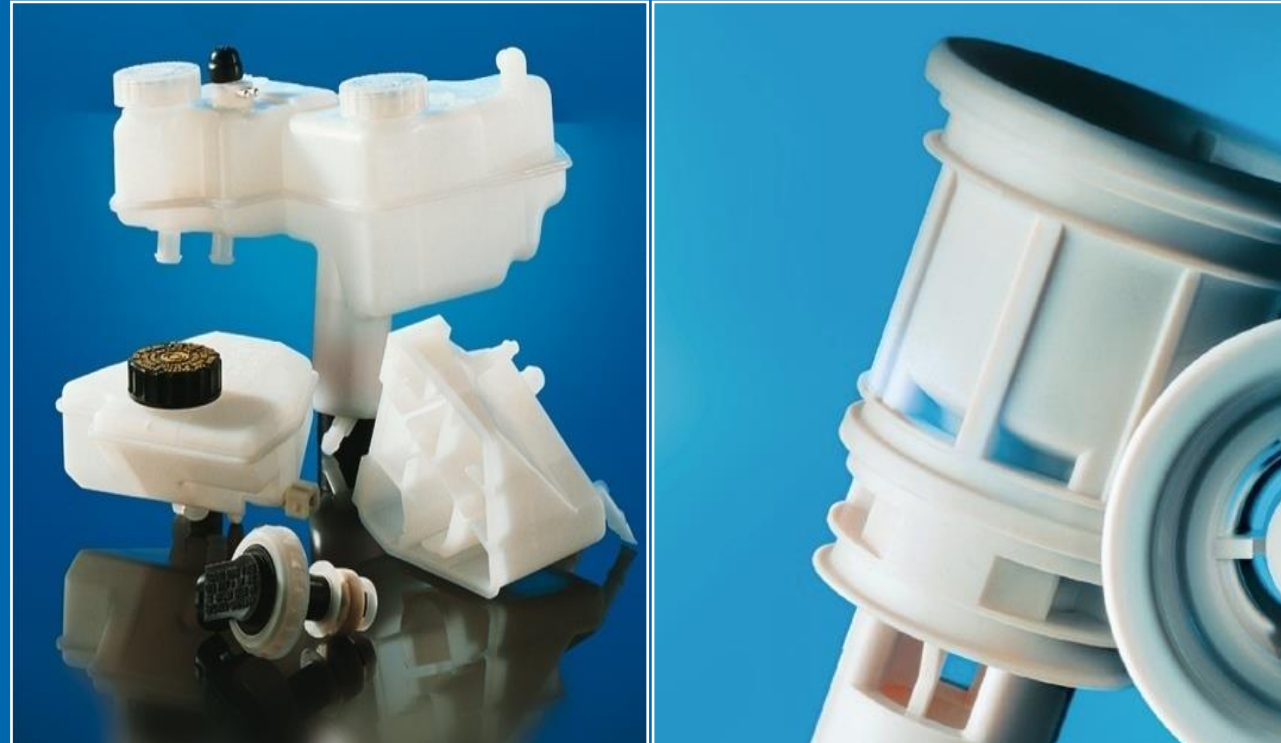
* All third party logos are property of their respective owners.

- PP
- PET
- PPE
- POM
- PC
- PBT
- ASA
- ABS
- PA
- PA6
- PA 66
- Nylons
- PPS Reinforced
- Glass & Mineral Fills
- Carbon Fiber Fills
- Thermoplastic/Rubber Blends



PRODUCT PORTFOLIO

MEXICO LOCATION



Brake Fluid Reservoirs



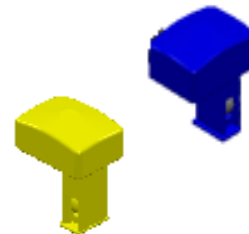
Filler Caps



Control Housings



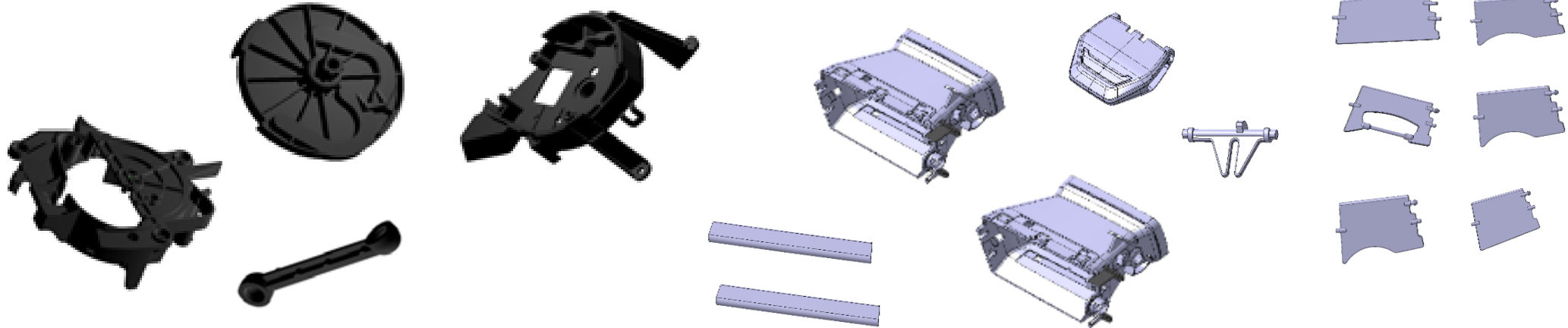
Floats



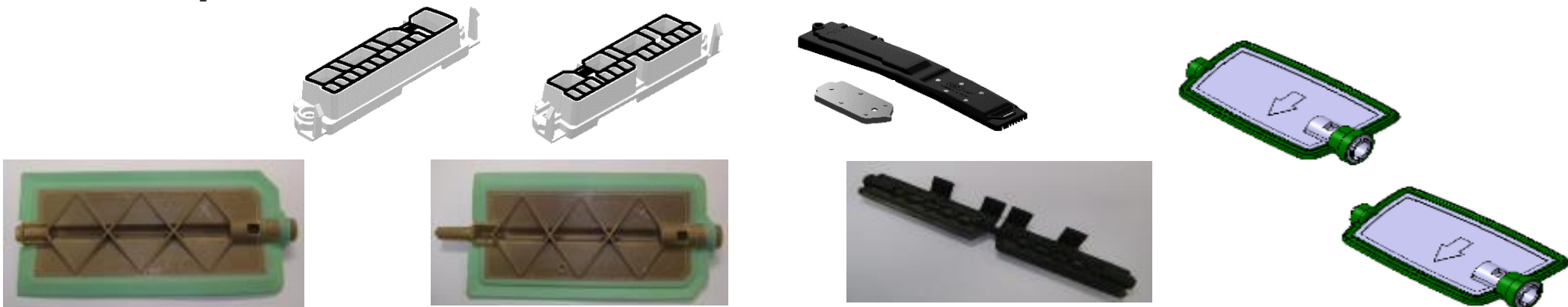
New Applications



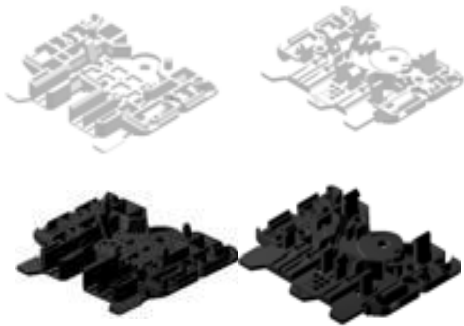
HVAC COMPONENTS



2K Components



Fuel



Electrical



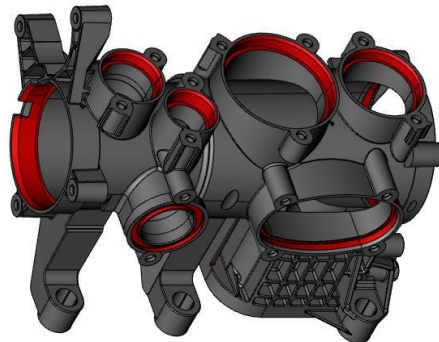
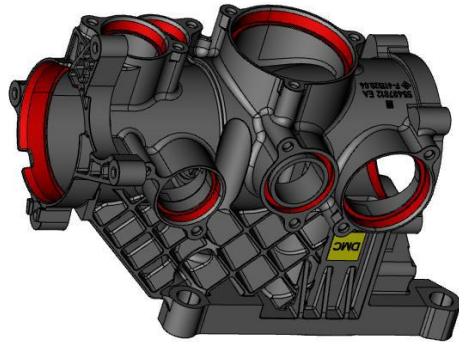
Steering



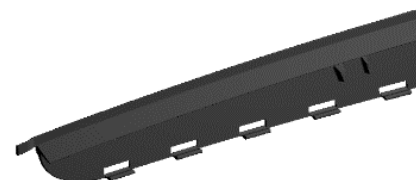
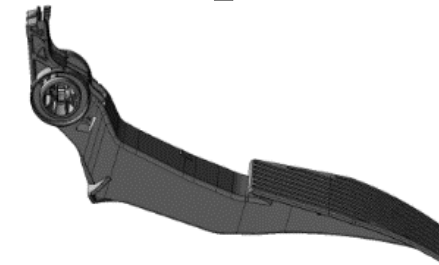
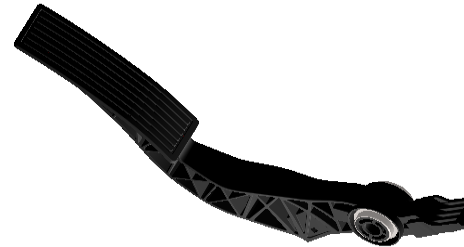
Electrical Housings & Covers



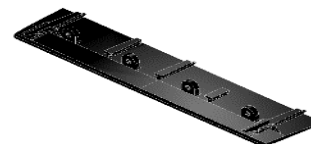
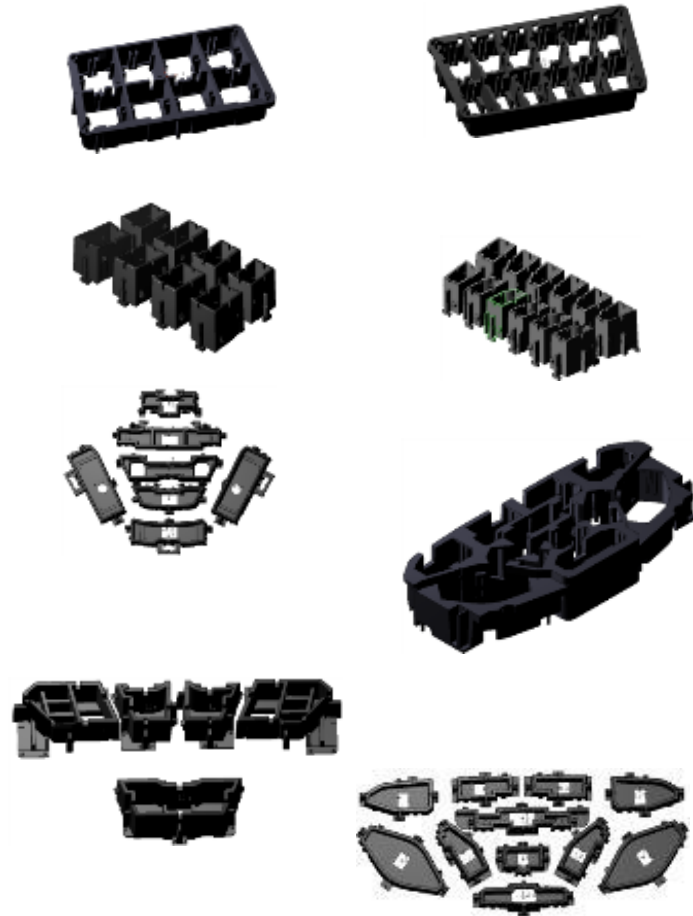
TMM Housings



Pedals & Others



Interior parts





VIELEN DANK FÜR IHRE AUFMERKSAMKEIT!

Thank you! obrigado! 谢谢! Děkuji! Merci! ありがとう! Gracias! спасибо! d'akujem! dankjewel! teşekkür ederim! köszönjük! tack! dziękuję! /धन्यवाद!