

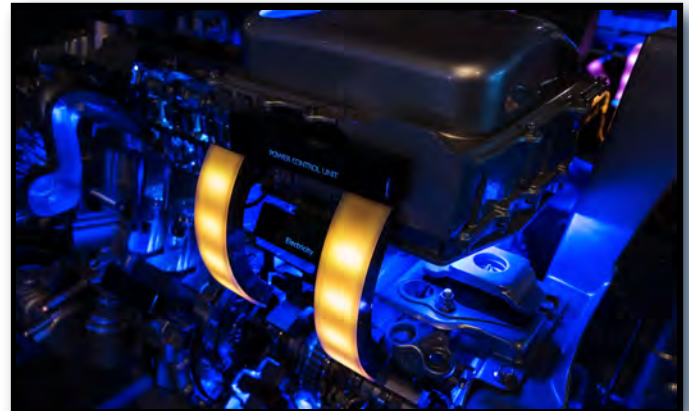


Interior & Exterior

- Wireless Connectivity
- HVAC Systems
- Interior & Sunroof Seals
- Heat Shields
- Surface Protection
- BSR/NVH
- HMI & Display Films
- Molded Plastic & Rubber Grips & Knobs
- Attachment Systems
- Interior Trim
- Lighting Assembly Gaskets
- Protective Films
- Pillar Molding
- Shock Absorption
- Windshield & Trunk Seals
- Primary & Secondary Door Seals

Electronic Controls

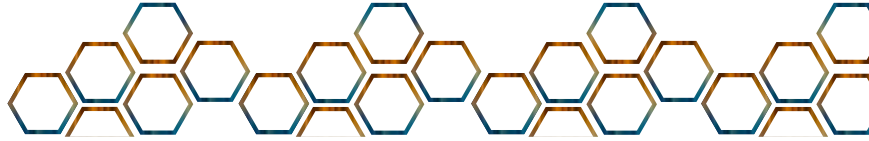
- Optical Films for HMI and Telematics
- Graphite Heat Spreaders
- ECU Thermal Management & Electrical Insulation
- Camera & Sensor Cooling
- EMI/RFI Shielding & Absorption in Telematics Systems
- Optically Clear Adhesives for Advanced Displays
- Liquid Cooling of On-Board Computing Systems (CPU, GPU, PSU)
- Liquid Cold Plates and Liquid Cooling Systems
- Heat Pipe and Vapor Chamber Assemblies for High Heat Density Devices



Engine Compartment & Charging Station

- Cabin Thermal Insulation
- Adhesive Systems
- Heat Pipe Assemblies
- Vapor Chamber Solutions
- Air and Liquid Cooling
- Gaskets, Seals & O-Rings
- Advanced Fin Heat Sink Assemblies
- Two Phase Cooling Solutions
- EMI/RFI Shielding & Absorption
- Electrical Insulation
- Acoustic Insulation
- Cabin Thermal Insulation
- Battery Cooling with High Performance Systems
- Voltage Inverter and Converter Cooling
- Motor Liquid Cooling Solutions
- IGBT Cold Plates and Heat Sinks for Traction Control
- Charging Station Heat Exchanger
- Thermal Interface Materials & Gap Pads



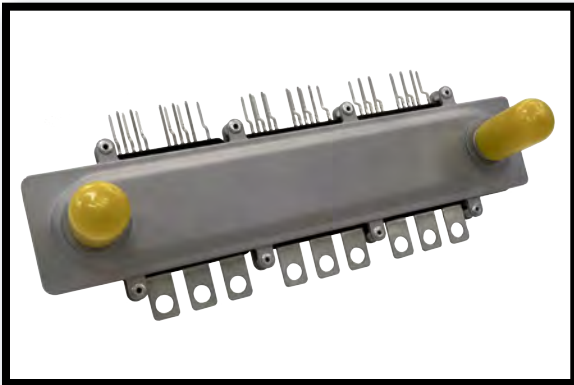


AREAS OF EXPERTISE



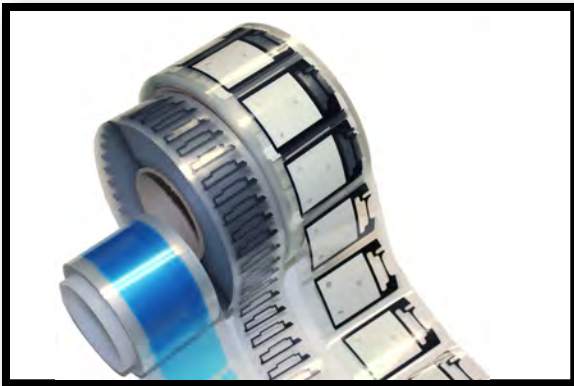
SEALING

- Bonding & Adhesives
- Polymer Extrusion
- Custom Hoses
- Custom Moldings
- Display Components
- Window Assemblies
- Gaskets & Seals
- O-Rings
- Graphic Overlay & Labels
- Liquid Management
- Airflow Management
- Optically Clear Adhesives



THERMAL

- Graphite Technologies
- Liquid Cooling
- Thermal Interface Materials
- Two Phase Cooling
- Thermal Modeling Software
- Heat Exchangers
- Liquid Cold Plates
- Air Cooling
- Heat Sinks
- Vapor Chambers
- Heat Spreaders
- Thermosiphons



PROTECTION

- Wear & Interior Protection
- Airflow Management
- Thermal Insulation
- SOLIMIDE® Foam
- Die Casting
- Heat Shielding
- Protective Tapes & Films
- Electrical Insulation
- EMI/RFI Shielding
- Noise, Vibration & Harshness
- Stamped Dampers
- Dust Ingress & Sealing
- Acoustic Insulation

CERTIFICATIONS & QUALITY SYSTEMS

- IATF16949
- ISO 9001
- ISO 14001
- ISO 13485
- RoHS Compliance
- UL Recognized
- Classrooms Class 100-100K
- ITAR
- AS 9100
- APQP
- PPAP
- FMEA
- SPC
- MSA
- GR&R

